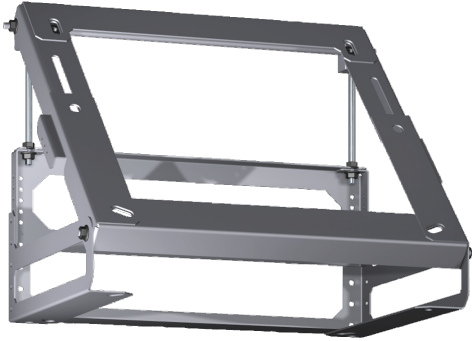


installation accessory
DHZ1241



Technische Data

Afmetingen inclusief verpakking hxbxd: 320 x 315 x 410 mm
Palletafmetingen: 145.0 x 80.0 x 120.0
Standaard aantal units per pallet: 24
Nettogewicht: 1.6 kg
Brutogewicht: 3.3 kg
EAN-code: 4242002503486



4 242002 503486

installation accessory
DHZ1241

