

# 24" Compact Condensation Dryer, with Home Connect, WTG865H4UC, White/Chrome



## Features and Benefits

### Key Features

- Interior Drum Light
- A Reversible Door Allows You to Access Laundry from the Right or Left
- 14 Dry Cycles: Permanent Press, Cotton, Towels, AntiShrink, Sanitize, Hand Wash/Wool, Bulky/Large Items, Quick Dry Auto, Jeans, Delicates, SuperQuick 15, Quick 40, Time Dry, Air Fluff/No Heat
- 9 Options: Low Heat, Time Dry, Remote Start, Start/Pause, Finish in, Level Adjust, Dryness Level, End Signal, Wrinkle Block

### Design

- Premium User Interface with Illuminated Control Dial
- Large LED Display with Remaining Time
- Perfect Design Match to Bosch 800 Series Washer
- Stainless Steel Structured Drum
- Neat White - European Design
- Large See-Thru Door with the Chrome Door Ring
- An Interior Drum Light Allows You to View Your Clothes Easily.
- AntiVibration Design Reduces Vibration

### Performance

- The Sensitive Drying System Uses Warm, Mild Air to Gently Dry Laundry
- Sensor-Controlled Automatic Drying Programs
- Intelligent Sensors Prevent Overheating
- Lower Temperatures Gently Dry Delicate Laundry Items
- Unique Drum Pattern Creates Air Cushions to Protect Clothes
- 4 Temperature Settings
- Level Adjust Option Offers 3 Levels of Drying Time Adjustments

### Efficiency

- Moisture Sensor Prevents Wasted Energy and Overdrying

Notes: All height, width and depth dimensions are shown in inches. \*Please refer to installation instructions prior to making cutout. BSH reserves the absolute and unrestricted right to change product materials and specifications, at any time, without notice. Consult the product's installation instructions for final dimensional data and other details. Applicable product warranty can be found in a accompanying product literature or you may contact your account manager for further details.

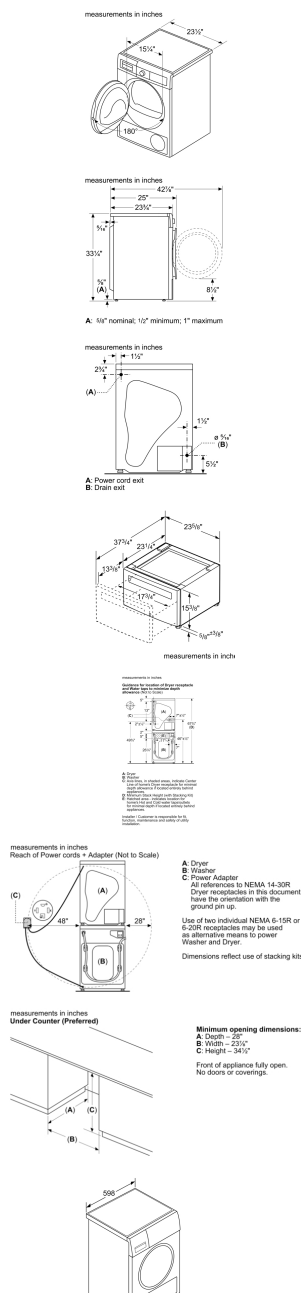
For more information on our entire line of products, go to [boschappliances.com](https://boschappliances.com) or call 1-800-944-2904.

Copyright ©2022 BSH Home Appliances Corporation. All rights reserved. Bosch is a registered trademark of Robert Bosch GmbH.

Litho Date: 05/2022



# 24" Compact Condensation Dryer, with Home Connect, WTG865H4UC, White/Chrome



## Features

	825225963141
Door ring	chrome, blackgray
Buttons	chrome
Dial	chrome
Door Hinge	Right
Alternative colors available	
Noise level	62
Energy Source	Electric
Watts	2800
Fuse protection	10,5
Volts	208-240
Frequency	60
Power cord included	Yes
Power Cord Length	63"
Plug type	240V-3 prong
Length outlet hose (in)	78.74
Length inlet hose (in)	
Overall appliance dimensions (HxWxD) (in)	33 1/4" x 23 1/2" x 25"
Product packaging dimensions (HxWxD)	34.64 x 24.40 x 26.57
Net weight	95.000
Gross weight	97.000
Tub Material	Stainless steel
Capacity	4.0
Stackability	Yes
Dryer Type	Condensing

## Technical Specification

Number of Options	10
Timed Dry	No
Location of Vent	Not applicable
Display	Yes
Status indicator	LED-display

Notes: All height, width and depth dimensions are shown in inches. \*Please refer to installation instructions prior to making cutout. BSH reserves the absolute and unrestricted right to change product materials and specifications, at any time, without notice. Consult the product's installation instructions for final dimensional data and other details. Applicable product warranty can be found in a accompanying product literature or you may contact your account manager for further details.

For more information on our entire line of products, go to [boschappliances.com](https://boschappliances.com) or call 1-800-944-2904.

Copyright ©2022 BSH Home Appliances Corporation. All rights reserved. Bosch is a registered trademark of Robert Bosch GmbH.

Litho Date: 05/2022