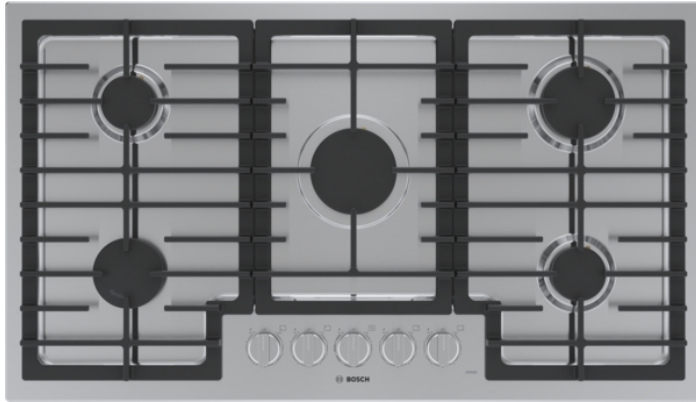


36" 5 Burner Gas Cooktop, NGM5658UC, Stainless Steel



Features and Benefits

Performance

- 5 high efficiency gas burners
- 16K BTU power burner for optimal cooking results
- OptiSim® burner
- STAR-K Sabbath compliant

Convenience

- Sealed burners prevent spills from entering the burner box
- Full width continuous surface cast iron grates
- Push-to-turn knobs with electronic ignition
- Distinctive single red LED light indicates burners are on

Design

- Stainless steel cooking surface
- Heavy-duty stainless color metal knobs for a premium look and feel
- Low-profile design for an integrated transition to the counter surface
- Perfect results are within reach with up-front centralized controls

Safety

- Flame thermocouple sensing device will switch off the supply of gas if flame temporarily extinguishes
- LP conversion kit included for conversion from natural gas to liquid propane
- Cooktop design coordinates with Bosch ovens and ventilation

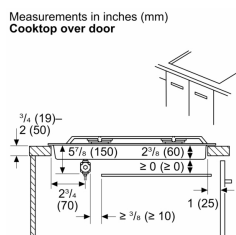
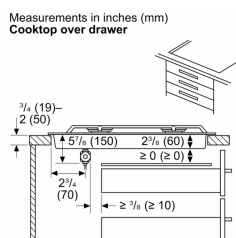
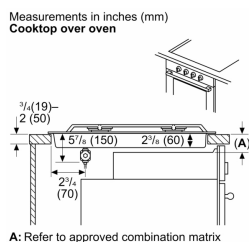
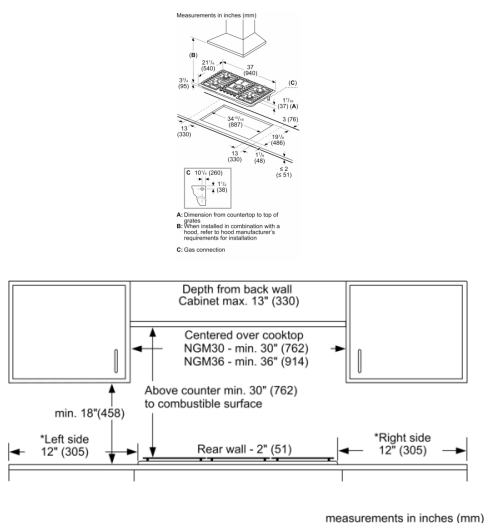
Notes: All height, width and depth dimensions are shown in inches. *Please refer to installation instructions prior to making cutout. BSH reserves the absolute and unrestricted right to change product materials and specifications, at any time, without notice. Consult the product's installation instructions for final dimensional data and other details. Applicable product warranty can be found in a accompanying product literature or you may contact your account manager for further details.

For more information on our entire line of products, go to boschappliances.com or call 1-800-944-2904.

Copyright ©2022 BSH Home Appliances Corporation. All rights reserved. Bosch is a registered trademark of Robert Bosch GmbH.

Litho Date: 06/2022

36" 5 Burner Gas Cooktop, NGM5658UC, Stainless Steel



Notes: All height, width and depth dimensions are shown in inches. *Please refer to installation instructions prior to making cutout. BSH reserves the absolute and unrestricted right to change product materials and specifications, at any time, without notice. Consult the product's installation instructions for final dimensional data and other details. Applicable product warranty can be found in a accompanying product literature or you may contact your account manager for further details.

Features

Knob Material	Full metal
Sealed Burners	Yes
Burners with booster	
Type of grate	Cast iron
Total BTU load	41400
LP Gas Connection Rating	41400
Power of heating element (kW in boost)	
Dimension of 1st heating element (in)	
Dimension of 2nd heating element (in)	
Power of 3rd heating element (kW in boost)	
Dimension of 3rd heating element (in)	
Power of 4th heating element (kW in boost)	
Dimension of 4th heating element (in)	
Power of 5th heating element (kW in boost)	
Dimension of 5th heating element (in)	
Power of 6th heating element (kW in boost)	
Dimension of 6th heating element (in)	

Technical Specification

UPC code	825225963370
Variant color	Stainless steel
Energy source	Gas
Gas type	Natural gas 15 mbar (USA)
Alternative gas type	Liquid gas 27,5 mbar (USA)
Watts	360
Fuse protection	15
Volts	120
Frequency	60
Approval certificates	not relevant
Power Cord Length	40"
Plug type	120V-3 prong
Required cutout size (HxWxD) (in)	3 13/16" x 34 15/16" x 19 1/8"
Minimum distance from counter front (in)	1 7/8"
Minimum distance from rear wall (in)	3"
Overall appliance dimensions (HxWxD) (in)	+3 13/16" x 37" x 21 1/4"
Product packaging dimensions (HxWxD)	8 3/8" x 43 1/8" x 24 3/4"
Net weight	31.000
Gross weight	31.000
Total number of cooktop burners	5

For more information on our entire line of products, go to boschappliances.com or call 1-800-944-2904.

Copyright ©2022 BSH Home Appliances Corporation. All rights reserved. Bosch is a registered trademark of Robert Bosch GmbH.

Litho Date: 06/2022