

**Series 2, vented tumble dryer, 7 kg
WTA74201TH**



**Quick fuss-free drying. Perfect results
every time**

Built-in / Free-standing:Free-standing
Removable top: No
Door hinge:Right
Color / Material body: White
Length electrical supply cord: 145.0 cm
Dimensions: 842x598x601 mm
Net weight:33.7 kg
Drum volume: 112 l
Connection Rating: 2000 W
Fuse protection:10 A
Voltage: 220-240 V
Frequency: 50 Hz
Drying process: automatic
Capacity cotton - NEW (2010/30/EC): 7.0 kg
Energy efficiency rating: C
Energy consumption electric dryer, full load - NEW (2010/30/EC)3.90 kWh
Standard cotton programme time at full load: 128 min
Energy consumption electric dryer, partial load - NEW (2010/30/EC):2.29 kWh
Standard cotton programme time at partial load: 77 min
Weighted annual energy consumption, electric dryer - NEW (2010/30/EC):482.0 kWh/annum
Power consumption in off-mode - NEW (2010/30/EC): 0.10 W
Power consumption in left-on mode - NEW (2010/30/EC): 1.00 W
Weighted programme time:97 min

WZ20180 Exhaust air hose
WZ20311 Stacking kit



Series 2, vented tumble dryer, 7 kg WTA74201TH

Quick fuss-free drying. Perfect results every time

Technical Information

- Capacity: 7 kg
- Dimensions (H x W x D): 84.2 x 59.8 x 60.1 cm
- 38 cm porthole, 150 ° swing door
- Noise level: 65 dB (A) re 1 pW

Programmes

- Cottons Cupboard Dry Extra, Cottons Cupboard Dry, Cottons Iron Dry, Sportswear, Towels, Mix, Time program warm, Time program cold, Lingerie, Wool finish, Super 40', Shirts, Easy Care Cupboard Dry Extra, Easy Care Cupboard Dry, Easy Care Iron Dry

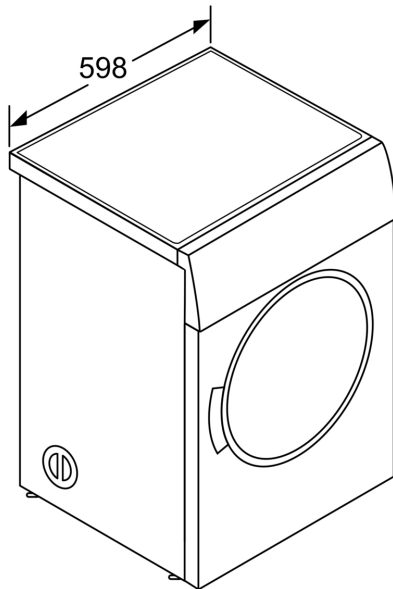
Features

- Anti-Vibration Side Panels reduce vibrations and ensure greater stability during the washing and spinning process.
- Sensitive Drying system combines warm air currents and a gentle drum structure for dry clothes
- Fine-adjustment of drying intensity to customise your preferred level of dryness
- Child-proof lock

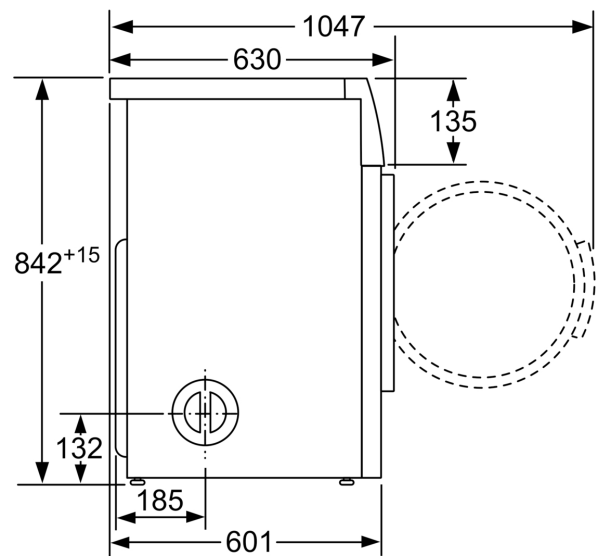
Display Screen & Alerts

- Touch Control buttons: Low heat, less ironing, programme length, start/pause, fine-tuning of drying aim, 24h end time delay
- Buzzer at the end of the wash programme

Series 2, vented tumble dryer, 7 kg
WTA74201TH



measurements in mm



measurements in mm

Measurements in mm

