

Serie | 4, American side by side, 175.6 x 91.2 cm, Inox-easyclean KAN92VI350



A large capacity Stainless Steel designed Side-by-Side fridge-freezer with VariolInverter and intuitive LED electronic control

- **Capacity:** Large capacity with flexible spaces for storing groceries of different sizes
- **LED light:** illuminates the refrigerator evenly without glare, for the life of the appliance.
- **NoFrost:** never defrost again, thanks to perfect protection from ice formation - that saves time and effort.
- **BigBox frozen food drawer:** for stacking storage containers or for large frozen food items.
- **Energy efficiency class A++:** Especially efficient cooling

Technical Data

| | |
|--|------------------------------|
| Built-in / Free-standing : | Free-standing |
| Number of compressors : | 1 |
| Number of independent cooling systems : | 2 |
| Width of the product (mm) : | 912 |
| Height (mm) : | 1756 |
| Depth of the product : | 732 |
| Net weight (kg) : | 109.729 |
| Door panel options : | Not possible |
| Door hinge : | left and right |
| Number of Adjustable Shelves in fridge compartment : | 3 |
| Shelves for Bottles : | No |
| Frost free system : | Fridge and freezer |
| Interior ventilator : | No |
| Reversible Door Hinge : | No |
| Length electrical supply cord (cm) : | 240 |
| Noise level (dB(A) re 1 pW) : | 43 |
| Multi-Flow Air Tower : | Yes |
| Fast cooling switch : | Yes |
| Fast freezing switch : | Yes |
| Carbon Air Filter : | No |
| Temperature Controlled Drawer : | No |
| Humidity Control Drawer : | No |
| Number of Door Bins - Refrigerator : | 4 |
| Door bin adjustability - Refrigerator : | No |
| Tilt-out door bins in fridge : | No |
| Number of Gallon storage : | 2 |
| No. of shelves in fridge : | 4 |
| Number of shelves - Freezer : | 2 |
| Shelf Adjustability - Freezer : | Yes |
| Connection Rating (W) : | 190 |
| Current (A) : | 10 |
| Voltage (V) : | 220-240 |
| Frequency (Hz) : | 50-60 |
| Storage Period in Event of Power Failure (h) : | 12 |
| Approval certificates : | CE, Eurasian, SG SAFETY, VDE |
| Color / Material body : | Chrome Inox-metallic |
| Door panel options : | Not possible |
| Noise level (dB(A) re 1 pW) : | 43 |
| Energy Star Qualified : | No |
| Required cutout/niche size for installation (in) : | x x |
| Dimensions of the packed product (in) : | 72.44 x 38.58 x 31.49 |
| Net weight (lbs) : | 242.000 |
| Gross weight (lbs) : | 258.000 |
| Product name / Commercial code : | KAN92VI350 |



Serie | 4, American side by side, 175.6 x 91.2 cm, Inox-easyclean KAN92VI350

A large capacity Stainless Steel designed Side-by-Side fridge-freezer with VariInverter and intuitive LED electronic control

General Data

- Gross Capacity (Total): 661 L
- Net Capacity (Total): 604L
- Net Capacity (Fridge): 387L
- Net Capacity (Freezer): 217 L
- Energy Efficiency Rating: 2 Ticks
- Energy Consumption : 639kWh/annum
- Dimensions (H x W x D): 175.6 cm x 91.2 cm x 73.2 cm
- Net Weight: 109.729

Cooling System

- No Frost - Saves you time and effort from defrosting.
- Supercooling - Automatically brings down the temperature of the refrigerator to cool new groceries rapidly.
- Superfreezing - Automatically brings down the temperature of the freezer to keep cool new items rapidly.
- Multi-airflow system - Minimises fluctuating temperatures by ensuring optimal and uniform air circulation in the fridge.

Convenience & Safety

- LED illumination in freezer and fridge sections
- Digital LED electronic panel
- Separate temperature controls for Fridge and Freezer
- Alarm system to alert the prolonged opening of refrigerator doors
- Easy positioning and handling with appliance on 4 wheels
- Adjustable front feet for added stability

Fridge Compartment

- 1 VitaFresh drawer with humidity control
- 1 Multibox for extra storage
- 2 Extension rail systems for easy pull-out of drawer-compartments
- 4 Safety Glass Shelves of which 3 are height adjustable and extendable
- 1 Dairy compartment
- 2 door trays (large) 2 door trays (small)

Freezer Compartment

- 2 Pull out drawers, incl. 1 Big Box for large size storing
- 2 storage drawers on extension rail systems for easy pull-out
- 4 glass shelves which are 2 are adjustable
- 5 Door Bins
- Easy Twist Ice Box
- Freezing capacity: 12 kg/24 h

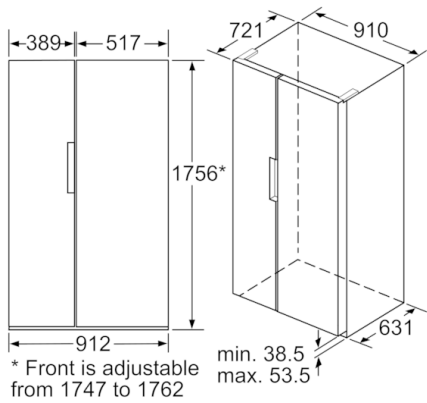
Design and Styling

- Stainless-steel with fingerprint resistant door finishing for easy cleaning
- Integrated vertical handle

Accessories

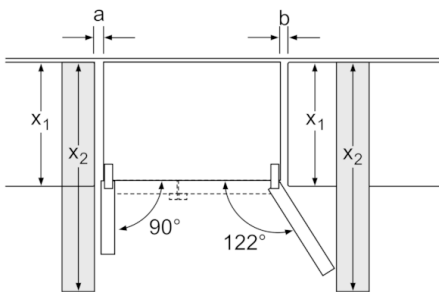
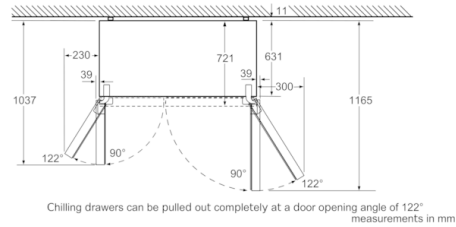
- 1 x egg tray

**Serie | 4, American side by side, 175.6 x 91.2 cm, Inox-easyclean
KAN92VI350**



min. 38.5
max. 53.5

measurements in mm



| x ₁ (unit depth) | a | b |
|-----------------------------|----|-----|
| 600 | 39 | 39 |
| 650 | 39 | 53 |
| 700 | 39 | 85 |
| x ₂ (wall) | 39 | 300 |

measurements in mm