

**Series 8, 175.6 x 91.2 cm, Black
KAD92SB30**



FIZ50000 Water filter
 KSZ10HC00 WiFi-Dongle
 KSZ63000 water hose extension

A large capacity Side-by-Side fridge-freezer with VariInverter, VitaFresh Plus and ice-&water dispenser with LED illumination. The Premium Touch panel provides you absolute control of your fridge with ease.

- **XXL capacity:** extra space for your food when you need it.
- **LED lighting:** keep your groceries in perfect view.
- **Big Box drawer:** for stacking storage containers or for large frozen food items.
- **Easy Access Shelf:** pull-out glass shelf gives you better access to the contents of your fridge.
- **2 Cooling Systems:** separately controllable refrigerator and freezer compartments

Built-in / Free-standing:	Free-standing
Number of compressors:	1
Number of independent cooling systems:	2
Width of the appliance:	912 mm
Height:	1756 mm
Depth of the product:	732 mm
Net weight:	156.8 kg
Door panel options:	Not possible
Door hinge:	left and right
Number of Adjustable Shelves in fridge compartment:	3
Shelves for Bottles:	Yes
Frost free system:	Fridge and freezer
Interior ventilator:	No
Reversible Door Hinge:	No
Length electrical supply cord:	240.0 cm
Noise level:	42 dB(A) re 1 pW
Multi-Flow Air Tower:	Yes
Fast cooling switch:	Yes
Fast freezing switch:	No
Carbon Air Filter:	No
Temperature Controlled Drawer:	No
Humidity Control Drawer:	No
Number of Door Bins - Refrigerator:	5
Door bin adjustability - Refrigerator:	No
Tilt-out door bins in fridge:	Yes
Number of Gallon storage:	2
Number of shelves - Freezer:	2
Shelf Adjustability - Freezer:	Yes
Capacity of Water Tank:	1.0 l
Connection rating:	190 W
Fuse protection:	10 A
Voltage:	220-240 V
Frequency:	50-60 Hz
Storage Period in Event of Power Failure (h):	12 h
Color / Material body:	Chrome Inox-metallic
Door panel options:	Not possible
Noise level:	42 dB(A) re 1 pW
Energy Star Qualified:	No
Required cutout/niche size for installation (in):	x
Dimensions of the packed product:	74.25 x 38.58 x 32.87
Net weight:	346.000 lbs
Gross weight:	375.000 lbs



Series 8, 175.6 x 91.2 cm, Black KAD92SB30

A large capacity Side-by-Side fridge-freezer with VarioInverter, VitaFresh Plus and ice-&-water dispenser with LED illumination. The Premium Touch panel provides you absolute control of your fridge with ease.

General Data

- Gross Capacity (Total): 639 L
- Net Capacity (Total): 539 L
- Net Capacity (Fridge): 368L
- Net Capacity (Freezer): 171 L
- Energy Efficiency Rating: 2 Ticks
- Energy consumption: 515 kWh/annum
- Dimensions (H x W x D): 175.6 cm x 91.2 cm x 73.2 cm
- Net Weight: 156.791

Cooling System

- No Frost - Saves you time and effort from defrosting.
- Supercooling - Automatically brings down the temperature of the refrigerator to cool new groceries rapidly.
- Superfreezing - Automatically brings down the temperature of the freezer to keep cool new items rapidly.
- Multi-airflow system - Minimises fluctuating temperatures by ensuring optimal and uniform air circulation in the fridge.

Convenience & Safety

- LED Illumination in fridge and freezer sections and ice-water dispenser
- Premium Touch Electronic Panel to set temperature and features of your refrigerator
- Separate temperature controls for Fridge and Freezer
- Alarm system to alert the prolonged opening of refrigerator doors
- Easy positioning and handling with appliance on 4 wheels
- Adjustable front feet for added stability

Fridge Compartment

- 1 VitaFresh Plus drawer keeps food fresh for up to twice as long
- 1 VitaFresh box so fish and meat stay fresh for longer
- 1 Vegetable container for extra storage
- 3 Extension rail systems for easy pull-out of drawer-compartments
- 4 Safety Glass Shelves of which 3 are height adjustable and extendable
- 1 Dairy compartment
- 2 door trays (large)
- 3 door trays (small)
- 1 wine rack

Freezer Compartment

- Automatic Ice-Water dispenser which dispenses water, ice-cubes and crushed-ice
- 2 drawers, of which 1 is bigbox, capable of storing large-sized packaging
- 2 storage drawers on extension rail systems for easy pull-out
- 3 glass shelves which are 2 are adjustable
- 4 Door Trays

Design and Styling

- Sleek Black glass door finishing
- Aluminium vertical handle

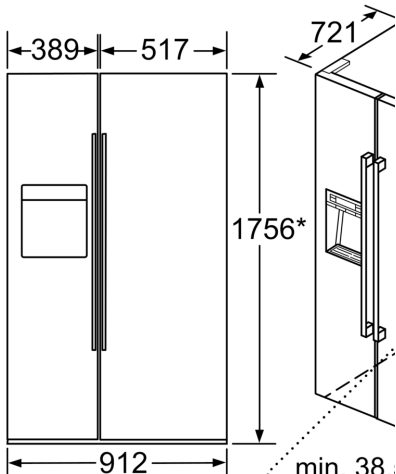
Accessories

- 1 x cartridge for water filtering system, 2 x cold accumulator, 1 x



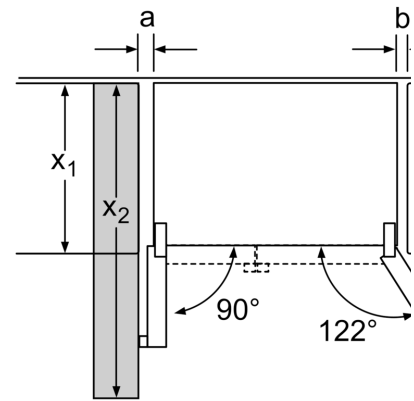
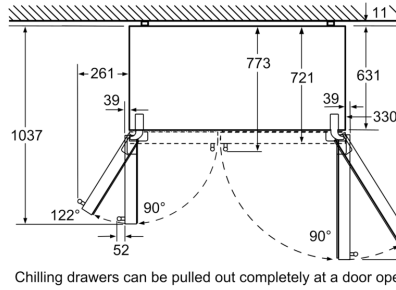
connection hose, 1 x egg tray

**Series 8, 175.6 x 91.2 cm, Black
KAD92SB30**



* Front is adjustable from 1747 to 1762

min. 38.
max. 53
Water c
to the ap
mea



X_1 (unit depth)	a	b
600	39	39
650	39	53
700	39	85
X_2 (wall)	105	330

meas