

**Series 8, American side by side,
175.6 x 91.2 cm, Stainless steel
(with anti-fingerprint)
KAD92HI31**



A Stainless Steel Side-by-Side Refrigerator with Home Connect- smart connectivity that lets you control the functions of your fridge on the move. Also eliminates any guesswork when you are grocery shopping- thanks to the integrated cameras in your fridge.

- **XXL capacity:** extra space for your food when you need it.
- **Design:** Modern design with fingerprint and scratch resistant stainless steel finishing.
- **Multiairflow system:** Minimises fluctuating temperatures by ensuring optimal and uniform air circulation in the fridge.
- **LED lighting:** keep your groceries in perfect view.
- **BigBox frozen food drawer:** for stacking storage containers or for large frozen food items.

FIZ50000 Water filter
KSZ63000 water hose extension

Built-in / Free-standing:	Free-standing
Number of compressors:	1
Number of independent cooling systems:	2
Width of the appliance:	912 mm
Height:	1756 mm
Depth of the product:	732 mm
Net weight:	139.8 kg
Door panel options:	Not possible
Door hinge:	left and right
Number of Adjustable Shelves in fridge compartment:	3
Shelves for Bottles:	Yes
Frost free system:	Fridge and freezer
Interior ventilator:	No
Reversible Door Hinge:	No
Length electrical supply cord:	240.0 cm
Noise level:	42 dB(A) re 1 pW
Multi-Flow Air Tower:	Yes
Fast cooling switch:	Yes
Fast freezing switch:	No
Carbon Air Filter:	No
Temperature Controlled Drawer:	No
Humidity Control Drawer:	No
Number of Door Bins - Refrigerator:	5
Door bin adjustability - Refrigerator:	No
Tilt-out door bins in fridge:	Yes
Number of Gallon storage:	2
Number of shelves - Freezer:	2
Shelf Adjustability - Freezer:	Yes
Capacity of Water Tank:	1.0 l
Connection rating:	190 W
Fuse protection:	10 A
Voltage:	220-240 V
Frequency:	50-60 Hz
Storage Period in Event of Power Failure (h):	12 h
Color / Material body:	Chrome Inox-metallic
Door panel options:	Not possible
Noise level:	42 dB(A) re 1 pW
Energy Star Qualified:	No
Required cutout/niche size for installation (in):	x
Dimensions of the packed product:	74.25 x 38.58 x 32.87
Net weight:	308.000 lbs
Gross weight:	342.000 lbs

**Series 8, American side by side,
175.6 x 91.2 cm, Stainless steel
(with anti-fingerprint)
KAD92HI31**

A Stainless Steel Side-by-Side Refrigerator with Home Connect- smart connectivity that lets you control the functions of your fridge on the move. Also eliminates any guesswork when you are grocery shopping- thanks to the integrated cameras in your fridge.

- Automatic Ice-Water dispenser which dispenses water, ice-cubes and crushed-ice
- 2 Pull out drawer, including 1 Big Box for storing large items
- 2 storage drawers on extension rail systems for easy pull-out
- 3 glass shelves which are 2 are adjustable
- 4 Door trays

Design and Styling

- Stainles-steel with fingerprint resistant door finishing for easy cleaning
- Vertical Aluminum Door handle

Accessories

- 2 x cold accumulator, 1 x connection hose, 1 x egg tray
- 1 Water Filter

General Data

- Gross Capacity (Total): 636 L
- Net Capacity (Total): 540L
- Net Capacity (Fridge): 367L
- Net Capacity (Freezer): 173 L
- Dimensions (H x W x D): 175.6 cm x 91.2 cm x 73.2 cm
- Net Weight: 139.81

Cooling System

- No Frost - Saves you time and effort from defrosting.
- Supercooling - Automatically brings down the temperature of the refrigerator to cool new groceries rapidly.
- Superfreezing - Automatically brings down the temperature of the freezer to keep cool new items rapidly.
- Multi-airflow system - Minimises fluctuating temperatures by ensuring optimal and uniform air circulation in the fridge.

Convenience & Safety

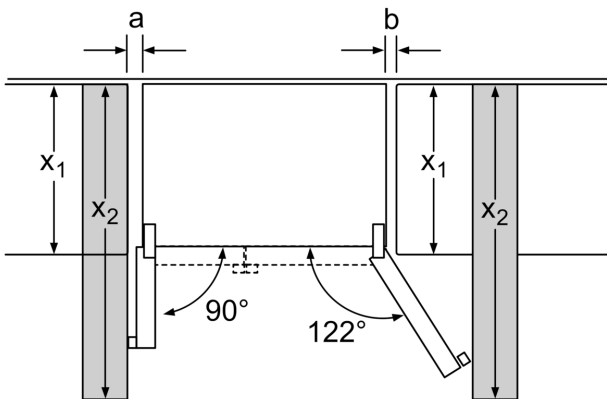
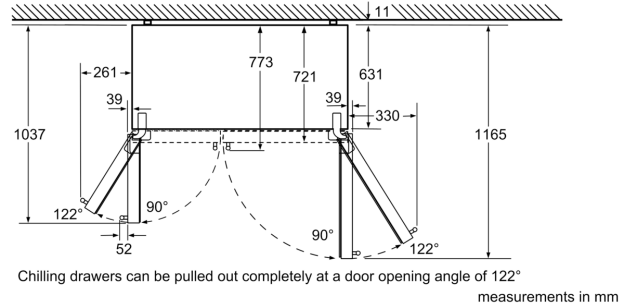
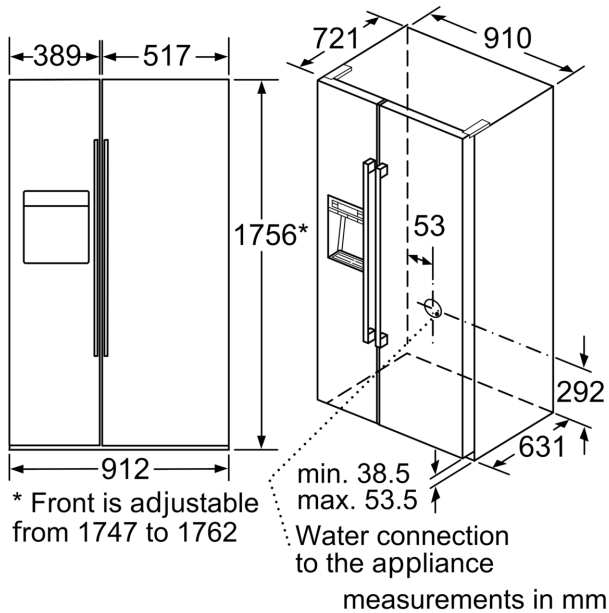
- Home Connect Application: Remotely control the temperature settings/modes, receive warning notifications and view content in the fridge.
- Two integrated Home Connect cameras for remote monitoring
- Premium Touch Electronic Panel to set temperature and features of your refrigerator
- LED Illumination in fridge and freezer sections and ice-water dispenser
- Separate temperature controls for Fridge and Freezer
- Alarm system to alert the prolonged opening of refrigerator doors
- Airfresh filter to neutralise odours in the fridge
- Adjustable front feet for added stability

Fridge Compartment

- 1 VitaFresh Plus drawer keeps food fresh for up to twice as long
- 1 VitaFresh box so fish and meat stay fresh for longer
- 1 Vegetable container for extra storage
- 2 Extension rail systems for easy pull-out of drawer-compartments
- 4 Safety Glass Shelves of which 3 are height adjustable and extendable
- 1 Dairy compartment
- 2 door trays (large)
- 3 door trays (small)
- 1 Bottle rack

Freezer Compartment

**Series 8, American side by side,
175.6 x 91.2 cm, Stainless steel
(with anti-fingerprint)
KAD92HI31**



X_1 (unit depth)	a	b
600	39	39
650	39	53
700	39	85
X_2 (wall)	105	330

measurements in mm