

**Series 8, Downdraft hood, 90 cm,
clear glass black printed
DDA097G59B**



DHZ5376 Standard odor filter

**The compact downdraft ventilation that
conceals perfectly into your worktop when
not in use**

- **Especially quiet:** High performance at just 62 dB
- **Flexible installation:** versatile motor placement for easy installation and more cabinet space.
- **LED illumination:** The energy-saving lighting provides white and good lighting for the hob area.
- **Intensive speed setting:** Removes strong kitchen odours quickly and effectively

Typology: Downdraft
 Length electrical supply cord: 150.0 cm
 Min. required niche size for installation (HxWxD): 652mm x 812.0mm x 113mm mm
 Height of product, without chimney: 651 mm
 Net weight: 35.1 kg
 Type of control: Electronic
 Number of speed settings: 4-stage + 1 intensive
 Max. air extraction: 530 m³/h
 Boost position output recirculating: 680.0 m³/h
 Max. air recirculation: 500 m³/h
 Boost position air extraction: 710 m³/h
 Number of lights: 1
 Noise level: 65 dB(A) re 1 pW
 Diameter of air outlet: 150 mm
 Grease filter material: Washable aluminium
 Odour filter: No
 Operating Mode: Convertible
 Optional accessories: DHZ5376
 Grease filter type: Kasette
 Connection rating: 285 W
 Fuse protection: 10 A
 Voltage: 220-240 V
 Frequency: 50 Hz
 Plug type: GB plug
 Installation typology: Built-in
 Material body: Stainless steel
 Plug type: GB plug
 Dimensions of the product, with chimney (if exists) (in): x x
 Dimensions of the packed product: 24.80 x 33.46 x 44.88
 Net weight: 77.000 lbs
 Gross weight: 102.000 lbs
 Motor location: Integrated motor in hood body
 Discharge direction: downward
 No-return airflow flap: No
 Length electrical supply cord: 150.0 cm
 Dimensions of the product, with chimney (if exists): 651 - 1052 x 912.0 x 352.0 mm
 Dimensions of the packed product (HxWxD): ... 630 x 850 x 1140 mm
 Net weight: 35.1 kg
 Gross weight: 46.2 kg
 Delay Shut off modes: 15 min



**Series 8, Downdraft hood, 90 cm,
clear glass black printed
DDA097G59B**

**The compact downdraft ventilation that
conceals perfectly into your worktop when
not in use**

Performance

- Suitable for ducted or recirculating operation
- Extraction rate according to EN 61591 \varnothing 15 cm:
 - max. Normal use 450 m³/h
 - Intensive 710 m³/h
- Noise max. Normal Level: 65 dB*

Design

- TouchControl with Electronic display
- Brushed steel colour

Key Functions

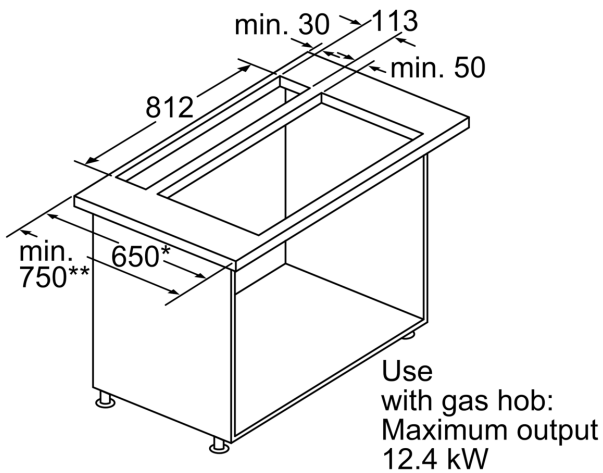
- Extension height 401 mm
- 4 speeds plus intensive operation
- Automatic intensive revert after 6 min.
- Automatic run on for 15 min.
- Rim ventilation
- 2 removable metal grease filter
- Removable metal grease filter, dishwasher safe
- 1 x LED bar 9W

Dimensions

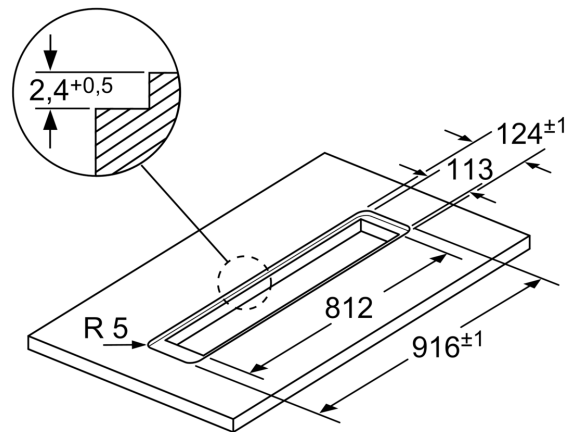
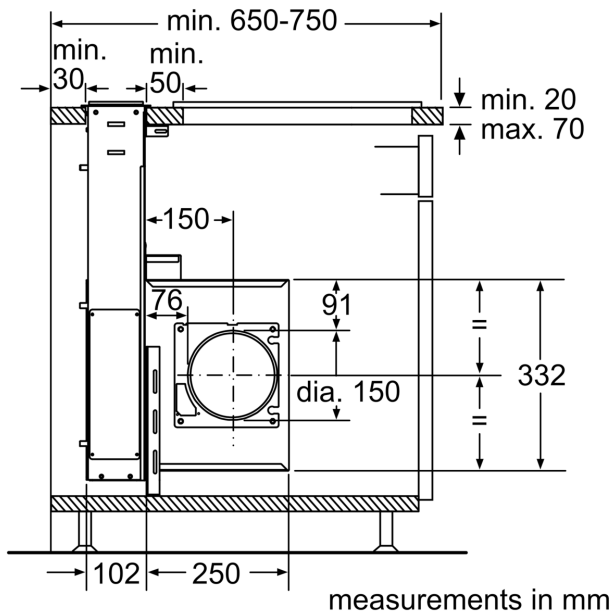
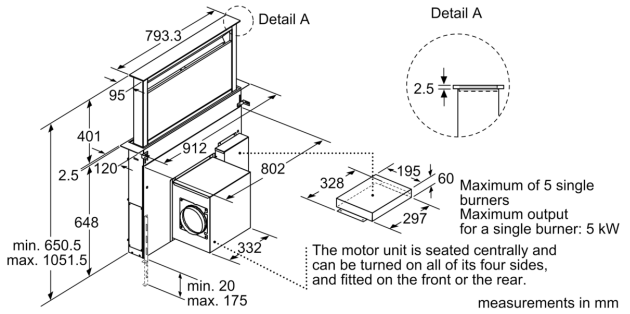
- Length electrical supply cord: 150 cm
- Electrical connection rating: 285 W
- Dimensions recirculating (HxWxD): 651 - 1052 x 912 x 352 mm
- Dimensions exhaust air (HxWxD): 651 - 1052 x 912 x 352 mm
- Required niche size for installation (HxWxD mm): 652 x 812 x 113

* In accordance with the EU-Regulation No 65/2014

**Series 8, Downdraft hood, 90 cm,
clear glass black printed
DDA097G59B**



- * 650 mm depth only in combination with slim hobs.
- ** min. 750 mm for hobs with 500 mm cut-out depth. measurements in mm



For flush installation
in stone and granite work surfaces
measurements in mm