

**Serie | 6, American side by side, 175.6
x 91.2 cm, Inox-easyclean
KAD92AI20A**



Included accessories

1 x connection hose
1 x egg tray

**A nofrost side-by-side fridge-freezer with
VitaFresh Plus and ice-&-water dispenser
with LED illumination. The premium touch
electronics allows you the absolute control
in an easy manner.**

- **XXL capacity:** extra space to store more food items due to the slightly wider build.
- **LED lighting:** illuminates the refrigerator evenly without glare.
- **NoFrost:** thanks to perfect protection from ice formation - that saves time and effort.
- **BigBox frozen food drawer:** for stacking storage containers or for large frozen food items.
- **EasyAccess Shelf:** pull-out glass shelf gives you better access to the ingredients inside your fridge.

Technical Data

Built-in / Free-standing : Free-standing
 Number of compressors : 1
 Number of independent cooling systems : 2
 Width of the product : 912 mm
 Height : 1756 mm
 Depth of the product : 732 mm
 Net weight : 129.8 kg
 Door panel options : Not possible
 Door hinge : left and right
 Number of Adjustable Shelves in fridge compartment : 3
 Shelves for Bottles : Yes
 Interior ventilator : No
 Reversible Door Hinge : No
 Length electrical supply cord : 240 cm
 Noise level : 45 dB(A) re 1 pW
 Multi-Flow Air Tower : Yes
 Fast cooling switch : Yes
 Fast freezing switch : No
 Carbon Air Filter : No
 Temperature Controlled Drawer : No
 Humidity Control Drawer : No
 Number of Door Bins - Refrigerator : 5
 Door bin adjustability - Refrigerator : No
 Tilt-out door bins in fridge : Yes
 Number of Gallon storage : 2
 No. of shelves in fridge : 4
 Number of shelves - Freezer : 2
 Shelf Adjustability - Freezer : Yes
 Capacity of Water Tank : 1.0 l
 Connection Rating : 190 W
 Fuse protection : 10 A
 Voltage : 220-240 V
 Frequency : 50 Hz
 Freezer Net capacity - NEW (2010/30/EC) : 0 l
 Freezing capacity) - NEW (2010/30/EC) : 0 kg/24h
 Approval certificates : CE, VDE
 Color / Material body : Chrome Inox-metallic
 Door panel options : Not possible
 Noise level : 45 dB(A) re 1 pW
 Energy Star Qualified : No
 Required cutout/niche size for installation (in) : x x
 Dimensions of the packed product : 74.25 x 38.58 x 32.87
 Net weight : 286.000 lbs
 Gross weight : 302.000 lbs
 Product name / Commercial code : KAD92AI20A



4 242002 920870

**Serie | 6, American side by side, 175.6 x 91.2
cm, Inox-easyclean
KAD92AI20A**

**A nofrost side-by-side fridge-freezer with
Vitafresh Plus and ice-&water dispenser
with LED illumination. The premium touch
electronics allows you the absolute control
in an easy manner.**

Volume

- 633 litres total gross volume (Fridge: 398 litres; Freezer: 235 litres)
- Net capacity, total: 545 l
- Net fridge capacity total: 369 l

Convenience & Safety

- Stainless steel doors with EasyClean finish

Controls

- Independent controls for fridge and freezer

Shelving and Compartments

- 4 safety glass shelves of which 3 are height adjustable
- Dairy compartment compartments
- Deli Drawer
- 4 PC door compartment
- 2 transparent freezer drawers
- 4 door shelves

Comfort

- Frost free Multi Airflow system
- Frost free MultiAirflow cooling
- Automatic switch off
- Acoustic warning system

Ice and Water

- Drinking Water Dispenser, Crushed Ice, Ice cube, Water filter.
- Automatic ice cube maker

Accessories

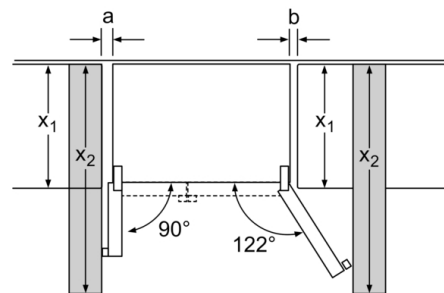
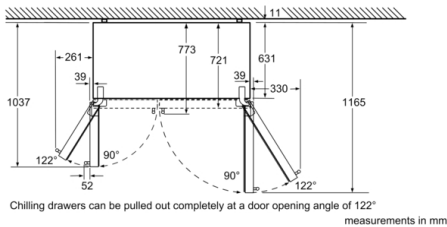
- 1 x connection hose, 1 x egg tray

Design and Styling

- H 175.6 cm x W 91.2 cm x D 73.2 cm

Energy rating

Serie | 6, American side by side, 175.6 x 91.2 cm, Inox-easyclean KAD92AI20A



x_1 (unit depth)	a b	
600	39	39
650	39	53
700	39	85
x_2 (wall)	105	330

measurements in mm

