

**Series 4, Built-in oven, 60 x 60 cm,
Stainless steel
HBA534BS0A**



Included accessories

2 x combination grid
1 x universal pan
1 x air fry & grill tray

Optional accessories

HEZ327000 : Pizza stone
HEZ32WA00 : Wireless food thermometer
HEZ530000 : Half tray
HEZ531010 : Baking tray, non-stick ceramic coated
HEZ538000 : 1fold telescopic rail, level independent
HEZ629070 : Air Fry & Grill tray

The built-in oven with 3D hot air: achieve perfect baking and roasting results on up to three levels simultaneously.

- **Red LED display:** easy to use with clear time functions and simple navigation.
- **Pop-out controls:** make the oven front easier to clean while maintaining a sleek, stylish look.
- **EcoClean Direct:** reduces cleaning effort with a special rear-wall coating that absorbs grime.
- **Cleaning Assistance:** reduces cleaning effort with a simple programme designed for light soiling.

Technical Data

Color / Material Front : Stainless steel
Built-in / Free-standing : Built-in
Door opening : Drop down
Integrated Cleaning system : EcoClean program, Hydrolytic
Control Panel Material : Stainless steel
Door Material : Glass
Dimensions : 595x594x548 mm
Dimensions of the packed product (HxWxD) : 660x650x680 mm
Required niche size for installation (HxWxD) : 585-595 x 560-568 x 550 mm
Cavity dimensions : 357 x 480 x 415 mm
Usable volume of cavity : 71 l
Net weight : 34.3 kg
Gross weight : 35.9 kg
EAN code : 4242005033775
Connection Rating : 3400 W
Fuse protection : 16 A
Voltage : 220-240 V
Frequency : 60; 50 Hz
Length electrical supply cord : 120 cm



4 242005 033775

Series 4, Built-in oven, 60 x 60 cm, Stainless steel

HBA534BS0A

The built-in oven with 3D hot air: achieve perfect baking and roasting results on up to three levels simultaneously.

Heating Functions

- Oven with 7 heating methods:
 - 3D Hotair
 - Top/Bottom heating
 - Hot-air grilling
 - Full width grill
 - Pizza setting
 - Bottom heating
 - Hotair gentle
- Temperature range 50 °C - 275 °C
- Rapid heating up
- Cavity volume: 71 l

Racks and Rails

- Anthracite enamel cavity with 5 shelf positions

Design

- LED-display control (red)
- Rotary Control Dials, Retractable controls dials
- Extra large capacity oven with grey enamel
- Stainless steel bar handle
- Halogen lighting
- Cooling fan

Cleaning

- Eco Clean: A microfine ceramic beaded coating on the oven's interior Rear wall

Convenience

- Child lock
- Electronic clock/timer with end time programming
- Electronic functions: Temperature control indicator
- Automatic start function

Safety Features

- Low door temperature, when in use
- Triple glass door panel
- New design full glass inner door, easy to clean with simple access to the door glass

Accessories

- air fry & grill tray, combination grid, universal pan

Technical Information

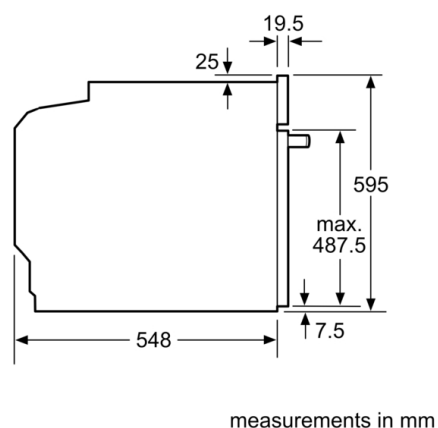
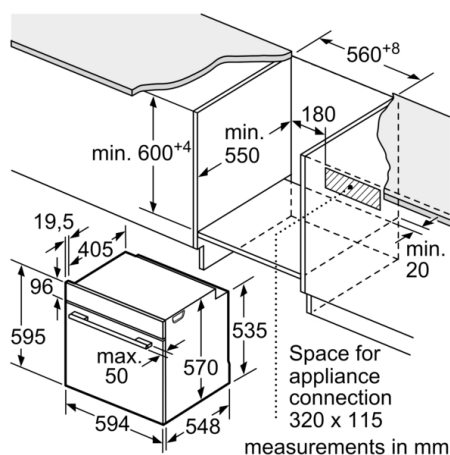
- Electrical connection rating: 3400 W
- Total connected load electric: 3.4 KW
- Nominal voltage: 220 - 240 V
- Length of mains cable: 120 cm

Dimensions:

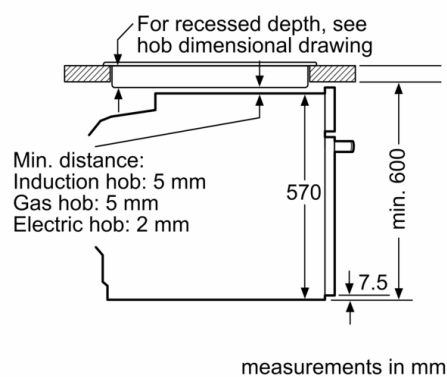
- Appliance dimension (HxWxD): 595 mm x 594 mm x 548 mm
- Required niche size for installation (HxWxD mm) : 585 -595 x 560-568 x 550
- Installation dimensions (HxWxD): 585 mm - 595 mm x 560 mm - 568 mm x 550 mm

Series 4, Built-in oven, 60 x 60 cm, Stainless steel

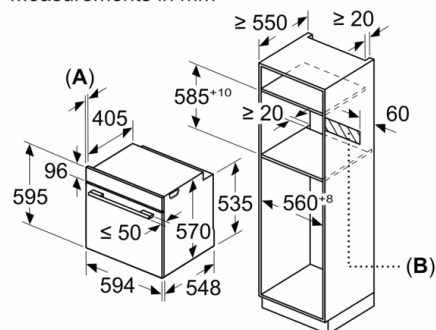
HBA534BS0A



Installation with a hob.



Measurements in mm



A: 19.5 mm
B: Space for appliance connection 320 x 115 mm