

## Series 4, Condenser Dryer, 8 kg WTB86201SG



WMZ20600 Wool in basket - accessory  
 WTZ1110 Condenser drainage kit  
 WTZ11400 Stacking kit with pull-out shelf  
 WTZ20410 Stacking kit  
 WTZPW20D Platform with pull-out, dryer, cubic

- **Auto Dry:** automatically dries to the exact degree of dryness you want.
- **AntiVibration™ Design:** highly stable and extremely quiet thanks to special vibration protection.
- **Fast drying:** dries your laundry considerably faster than before.
- **Sensitive Drying System:** for gentle drying without wrinkles.
- **Allergy Plus:** specially developed for the needs of allergy sufferers and sensitive skin.

---

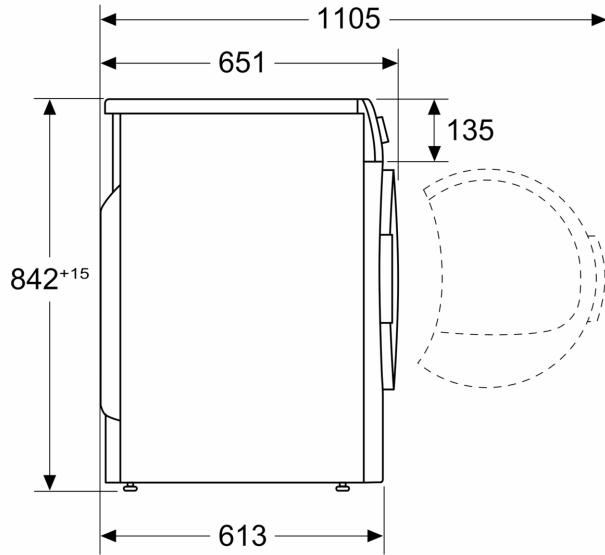
Built-in / Free-standing: ..... Free-standing  
 Removable top: ..... No  
 Door hinge: ..... Right  
 Color / Material body: ..... White  
 Length electrical supply cord: ..... 145.0 cm  
 Dimensions (HxWxD): ..... 842x598x613 mm  
 Net weight: ..... 41.4 kg  
 Drum volume: ..... 112 l  
 Connection rating: ..... 2600 W  
 Fuse protection: ..... 13 A  
 Voltage: ..... 220-240 V  
 Frequency: ..... 50 Hz  
 Drying process: ..... automatic  
 Loading capacity: ..... 8.0 kg  
 Energy efficiency rating: ..... B  
 Energy consumption electric dryer, full load - NEW (2010/30/EC) 4.63 kWh  
 Standard cotton programme time at full load: ..... 137 min  
 Energy consumption electric dryer, partial load - NEW (2010/30/EC):  
 ..... 2.61 kWh  
 Standard cotton programme time at partial load: ..... 79 min  
 Weighted annual energy consumption, electric dryer - NEW  
 (2010/30/EC): ..... 560.0 kWh/annum  
 Power consumption in off-mode - NEW (2010/30/EC): ..... 0.10 W  
 Power consumption in left-on mode - NEW (2010/30/EC): ..... 0.50 W  
 Weighted programme time: ..... 104 min  
 Condensation efficiency class: ..... B  
 Average condensation efficiency full load (%): ..... 88 %  
 Average condensation efficiency partial load (%): ..... 88 %  
 Weighted condensation efficiency (%): ..... 88 %

---



**Series 4, Condenser Dryer, 8 kg**  
**WTB86201SG**

Measurements in mm



Measurements in mm

