

**Series 4, Side by Side, 175.6 x 91.2 cm, Inox-easyclean KAN92VI350**



**Included accessories**

1 x egg tray

**A large capacity Stainless Steel designed Side-by-Side fridge-freezer with VariInverter and intuitive LED electronic control**

- **XXL capacity:** provides lots of space for your food.
- **LED interior light:** illuminates the refrigerator evenly and glare-free, and lasts for its entire life.
- **Design:** Modern design with fingerprint and scratch resistant stainless steel finishing.
- **Big Box drawer:** for stacking storage containers or for large frozen food items.
- **EasyAccess Shelf:** retractable glass shelf for convenient loading and unloading and a perfect view.

**Technical Data**

Built-in / Free-standing : Free-standing  
 Number of compressors : 1  
 Number of independent cooling systems : 2  
 Width of the product : 912 mm  
 Height : 1756 mm  
 Depth of the product : 732 mm  
 Net weight : 109.0 kg  
 Door panel options : Not possible  
 Door hinge : left and right  
 Number of Adjustable Shelves in fridge compartment : 3  
 Shelves for Bottles : No  
 Interior ventilator : No  
 Reversible Door Hinge : No  
 Length electrical supply cord : 240 cm  
 Noise level : 43 dB(A) re 1 pW  
 Multi-Flow Air Tower : Yes  
 Fast cooling switch : Yes  
 Fast freezing switch : No  
 Carbon Air Filter : No  
 Temperature Controlled Drawer : No  
 Humidity Control Drawer : No  
 Number of door bins - Refrigerator : 4  
 Door bin adjustability - Refrigerator : No  
 Tilt-out door bins in fridge : Yes  
 Number of Gallon storage : 2  
 No. of shelves in fridge : 4  
 Number of shelves - Freezer : 2  
 Shelf Adjustability - Freezer : Yes  
 Connection Rating : 190 W  
 Fuse protection : 10 A  
 Voltage : 220-240 V  
 Frequency : 50-60 Hz  
 Energy label : A++  
 Energy consumption annual - NEW (2010/30/EC) : 389.00 kWh/annum  
 Refrigerator Net capacity - NEW (2010/30/EC) : 387 l  
 Freezer Net capacity - NEW (2010/30/EC) : 217 l  
 Freezing capacity) - NEW (2010/30/EC) : 12 kg/24h  
 Storage Period in Event of Power Failure (h) : 12 h  
 Approval certificates : CE, Eurasian, SG SAFETY, VDE  
 Color / Material body : Chrome Inox-metallic  
 Door panel options : Not possible  
 Noise level : 43 dB(A) re 1 pW  
 Energy Star Qualified : No  
 Required cutout/niche size for installation (in) : x x  
 Dimensions of the packed product : 72.44 x 38.58 x 31.49  
 Net weight : 240.000 lbs  
 Gross weight : 258.000 lbs  
 Product name / Commercial code : KAN92VI350



## **Series 4, Side by Side, 175.6 x 91.2 cm, Inox-easyclean KAN92VI350**

### **A large capacity Stainless Steel designed Side-by-Side fridge-freezer with VariInverter and intuitive LED electronic control**

#### **General Data**

- Gross Capacity (Total): 661 L
- Net Capacity (Total): 604 L
- Net Capacity (Fridge): 387L
- Net Capacity (Freezer):202 L
- Energy Consumption : 639 kWh/annum
- Appliance Height: 1756 mm  
Appliance Width:912 mm  
Appliance Depth:732 mm
- Gross Weight: 117 kg
- Net Weight: 109.0 kg

#### **Cooling System**

- NoFrost - Saves you time and effort from defrosting.
- Supercooling - Automatically brings down the temperature of the refrigerator to cool new groceries rapidly.
- Superfreezing - Automatically brings down the temperature of the freezer to keep cool new items rapidly.
- Multi Airflow-System - Minimises fluctuating temperatures by ensuring optimal and uniform air circulation in the fridge.

#### **Convenience & Safety**

- LED Illumination in freezer and fridge sections
- Digital LED electronic panel
- Separate temperature controls for Fridge and Freezer
- Alarm system to alert the prolonged opening of refrigerator doors
- Easy positioning and handling with appliance on 4 wheels
- Adjustable front feet for added stability

#### **Fridge Compartment**

- 1 VitaFresh drawer with humidity control
- 1 Multibox for extra storage
- 2 Extension rail systems for easy pull-out of drawer-compartments
- 4 Safety Glass Shelves of which 3 are height adjustable and extendable
- 1 Dairy compartment
- 2door trays (large)  
2 door trays (small)

#### **Freezer Compartment**

- 2 Pull out drawers, incl. 1 Big Box for large size storing
- 2 storage drawers on extension rail systems for easy pull-out
- 4 glass shelves which are 2 are adjustable
- 5 Door Bins
- Easy twist ice box
- Freezing capacity: 12 kg in 24 hours

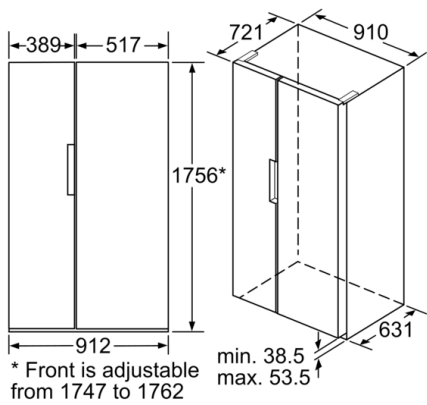
#### **Design and Styling**

- Stainless-steel with fingerprint resistant door finishing for easy cleaning
- Integrated vertical handle

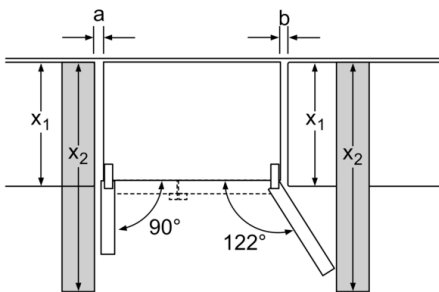
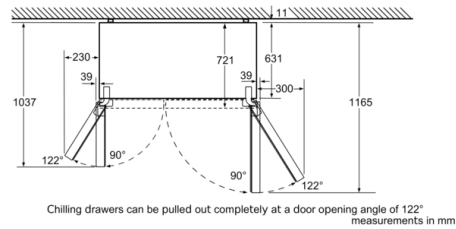
#### **Accessories**

- egg tray

**Series 4, Side by Side, 175.6 x 91.2 cm, Inox-easyclean  
KAN92VI350**



measurements in mm



$x_1$ (unit depth)	a	b
600	39	39
650	39	53
700	39	85
$x_2$ (wall)	39	300

measurements in mm