

Series 4, vented tumble dryer, 7 kg WTA74201IN



Have your dryer always running at maximum performance and peak efficiency with the SelfCleaning Condenser

- **Display for time remaining:** you always know when your laundry will be dry.
- **AntiVibration™ Design provides more stability and reduces vibration so noise is minimised**
- **Sensitive Drying System:** for gentle drying without wrinkles.
- **Auto Dry:** automatically dries to the exact degree of dryness you want.
- **Anti-Vibration Design:** Extremely stable vibration protection ensures high smoothness of operation.

Built-in / Free-standing: Freestanding
 Removable top: No
 Door hinge: Right
 Color / Material body: White
 Length electrical supply cord: 145.0 cm
 Dimensions: 842x598x601 mm
 Net weight: 33.5 kg
 Drum volume: 112 l
 Connection rating: 2000 W
 Fuse protection: 10 A
 Voltage: 220-240 V
 Frequency: 50 Hz
 Drying process: automatic
 Loading capacity: 7.0 kg

WTZ1130 Vent hose
 WTZ11311 Stacking kit



Series 4, vented tumble dryer, 7 kg WTA74201IN

Have your dryer always running at maximum performance and peak efficiency with the SelfCleaning Condenser

- 7 kg, Vented dryer 60 cm width, White

Design

- Capacity: 7 kg
- Dryer type: Vented Dryer
- Energy consumption 213.0 kWh per year, based on 160 drying cycles of the standard cotton programme at full and partial load, and the consumption of the low-power modes. Actual energy consumption per cycle will depend on how the appliance is used
- Energy consumption of the standard cotton programme at full load 1.71 kWh and energy consumption of the standard cotton programme at half load 1 kWh
- Energy consumption of 9kg cotton cupboard dry: 2.13 kWh
- Duration of left-on mode: 30 min
- The programme Cotton cupboard dry used at full and partial load is the standard drying programme to which the information in the label and the fiche relates, this programme is suitable for drying normal wet cotton laundry and is the most efficient programme in terms of energy consumption for cotton
- Noise level: 63 dB

Programmes

- Special programmes: Shirts (Business), Duvet, Pillow (Down), Outdoor, Towels, Hygiene, Super 40', Mixed Fabric, Woolen (Finish), Lingerie

Performance

- Anti crease cycle 120 minutes at the end of the programme
- touchControl buttons: start/pause, Gentle, Less Ironing, programme length, Fine-tuning of drying aim, 24 h Ready in

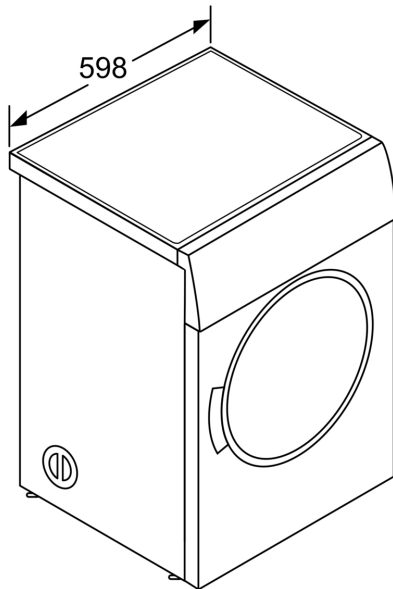
Key features

- Duo-Tronic Senors monitors moisture levels and temperature to reach desired levels of dryness and to prevent overheating
- Fully electronic control dial for sensor drying, including timed and special programmes
- LED Display for remaining time and 24 hours time delay, programme status indication, special functions
- Sensitive drying: Galvanised drum with textile care structure, soft design paddles
- Anti-Vibration Design: More stability and quietness
- Flexible exhaust-air duct
- Child-proof lock
- Buzzer at the end of the wash programme
- Reload Function
- Door hinge: right-hand

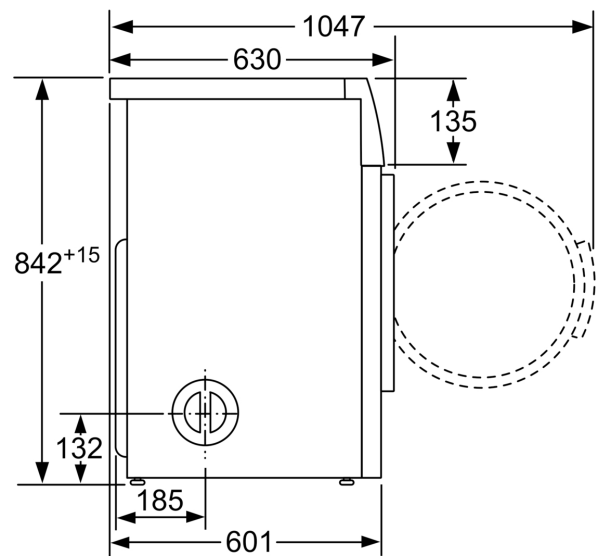
Technical Information

- Dimensions (H X W X D): 84.2 x 59.8 x 60.1 cm
- Noise level washing: 54 dB; Noise level spinning: 74 dB

Series 4, vented tumble dryer, 7 kg
WTA74201IN



measurements in mm



measurements in mm

Measurements in mm

