

**Series 4, washing machine, front loader, 7 kg, 1200 rpm
WAK2416SIN**



WX975600 Floor securing component
WZ10130 Extension for cold water inlet /Aquastop

Minimize tangles by up to 50%

- **Anti-Tangle** feature minimizes tangles in laundry by up to 50% making it gentler on fabric and easier to iron.
- **SpeedPerfect**: perfectly clean in up to 65% less time*.
- **Vario Drum**: gently and efficiently wash with even water distribution and without creasing garments.
- **Anti-Vibration Side Panels** reduce vibrations and ensure greater stability during the washing and spinning process.
- **Reload function**: forgot an item? Add it easily to the wash.

Built-in / Free-standing: Freestanding
 Door hinge: left
 Color / Material body: Silver
 Length electrical supply cord: 160.0 cm
 Height of the appliance: 848 mm
 Dimensions of the product: 848 x 598 x 590 mm
 Wheels: No
 Net weight: 72.4 kg
 Drum volume: 58 l
 Door Frame: Silver-black grey
 Color Buttons: silver
 Color Dial: silver
 Noise level washing: 55 dB(A) re 1pW
 Connection rating: 2300 W
 Fuse protection: 10 A
 Voltage: 220-240 V
 Frequency: 50 Hz
 Energy Star Qualified: No
 Cord Included: No
 Plug type: India plug (16 Ampere)
 Length of supply hose (in): 59.05 "
 Dimensions of the packed product: 37.99 x 25.78 x 27.95
 Net weight: 160.000 lbs
 Gross weight: 171.000 lbs
 Length of drain hose: 150.00 cm
 Length of supply hose: 150.00 cm
 Dimensions of the packed product (HxWxD): 965 x 710 x 655 mm
 Gross weight: 77.5 kg
 Connection rating: 2300 W
 Fuse protection: 10 A
 Voltage: 220-240 V
 Frequency: 50 Hz
 Water protection system: Multiple water protection
 Max. spin speed: 1200 rpm
 Spin speed options: Variable
 Digital countdown indicator: Yes
 Drying progress indicator: LED-display, LED
 Maximum capacity in kg (EU 2017/1369): 7.0 kg





Series 4, washing machine, front loader, 7 kg, 1200 rpm WAK2416SIN

Minimize tangles by up to 50%

Technical Information

- Capacity: 7 kg
- Maximum spin speed: 1200 r/min
- Dimensions (H x W x D): 84.8cm x 59.8cm x 59.0cm (61.8cm with door frame)
- 32 cm porthole, 165° swing door

Programmes

- Cottons Cold, Cottons 40°, Cottons 60° Eco, Sportswear 30°, Synthetics 30°, Mix Load 30°, Drum Clean, Spin/Drain, Rinse, Wool, Delicates/Silk 30°, Kidswear 40°, Lingerie, Freshen Up 30°, Super15/30 min

Features

- Anti-Tangle feature minimizes tangles in laundry up to 50%
- SpeedPerfect™: high performance programme which reduces wash cycle duration by up to 65%
- ActiveWater™: Pressure sensor that detects half-loads and cuts water intake in half
- VarioDrum's breakthrough wave-droplet design provides a thorough yet gentle clean for fine textiles
- Anti-Vibration Side Panels reduce vibrations and ensure greater stability during the washing and spinning process
- Start/Reload function to pause machine operation for adding in last minute laundry items

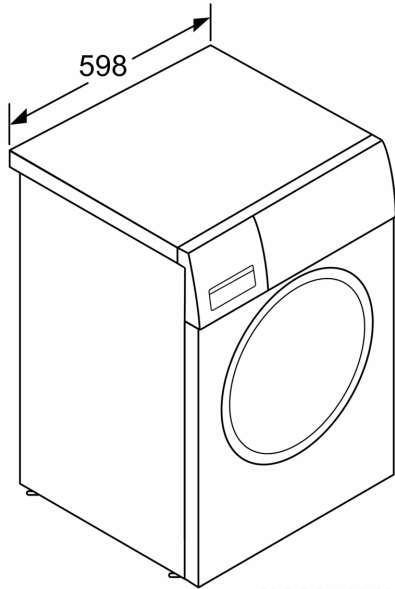
Safety

- Multiple Water Protection with magnetic valve to minimise risk of leakage
- Voltmonitor monitors and regulates voltage fluctuations to protect the washing machine and ensure a smooth wash cycle

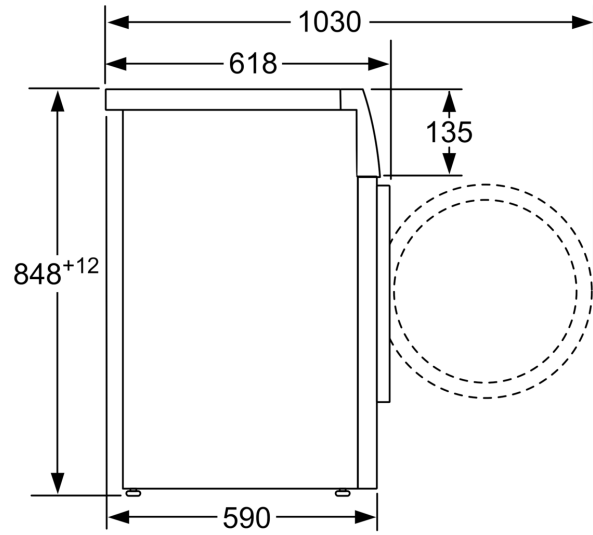
Display Screen & Alerts

- LED display screen to indicate Remaining Time, Spin Speed reduction
- Buzzer at the end of the wash programme

**Series 4, washing machine, front loader, 7 kg, 1200 rpm
WAK2416SIN**



measurements in mm



measurements in mm