

**Series 4, washing machine, front loader, 8 kg, 1200 rpm
WAJ2416EIN**



WX975600 Floor securing component
WZ10130 Extension for cold water inlet /Aquastop

Minimize tangles by up to 50%.

- **Anti-Tangle** feature minimizes tangles in laundry by up to 50% making it gentler on fabric and easier to iron.
- **99.99% bacterial reduction**
- **Eco Silence Drive™**: the efficient and highly durable washing machine drive.
- **Vario Drum**: gently and efficiently wash with even water distribution and without creasing garments.
- **Anti Vibration™ Design**: extremely stable and especially quiet thanks to special vibration protection.
- **EcoSilence Drive™** friction-free motor minimises heat and wear for long-lasting performance, quiet operation and perfect wash results.

Built-in / Free-standing: Freestanding
 Door hinge: left
 Color / Material body: White
 Length electrical supply cord: 160.0 cm
 Height of the appliance: 848 mm
 Dimensions of the product: 848x598x590 mm
 Wheels:No
 Net weight: 71.5 kg
 Drum volume: 58 l
 Door Frame: White-black grey
 Color Buttons: white
 Noise level washing: 53 dB(A) re 1pW
 Connection rating: 2300 W
 Fuse protection: 10 A
 Voltage: 220-240 V
 Frequency: 50 Hz
 Energy Star Qualified:No
 Cord Included:Yes
 Plug type: India plug (16 Ampere)
 Length of supply hose (in):59.05 "
 Dimensions of the packed product: 34.44 x 25.78 x 27.95
 Net weight: 158.000 lbs
 Gross weight: 169.000 lbs
 Length of drain hose: 150.00 cm
 Length of supply hose: 150.00 cm
 Dimensions of the packed product (HxWxD): 875 x 655 x 710 mm
 Gross weight: 76.5 kg
 Connection rating: 2300 W
 Fuse protection: 10 A
 Voltage: 220-240 V
 Frequency: 50 Hz
 Water protection system:Multiple water protection
 Max. spin speed: 1200 rpm
 Spin speed options: Variable
 Digital countdown indicator: Yes
 Drying progress indicator: LED-display, LED
 Maximum capacity in kg (EU 2017/1369): 7.0 kg



Series 4, washing machine, front loader, 8 kg, 1200 rpm WAJ2416EIN

Minimize tangles by up to 50%.

Technical Information

- Capacity: 7kg
- Maximum spin speed: 1200 rpm
- Dimensions (H x W x D): 84.8 cm x 59.8 cm x 59.0 cm (61.8cm with door frame)
- 32cm porthole, 165° swing door

Programmes

- Cottons, Cottons 60° Label, Synthetics, Mix Load, Delicates/Silk, Wool, Drum Descale, Rinse, Spin/Drain, Sportswear, Jeans/Dark, Anti-Bacteria, Kidswear, Freshen-Up, Quick 15/30min.

Features

- Anti-Tangle feature minimizes tangles in laundry by up to 50% making it gentler on fabric and easier to iron
- Anti-Bacteria programme removes 99.9% of bacteria
- ActiveWater™: Pressure sensor that detects half-loads and cuts water intake in half.
- Reload function to pause machine operation for adding in last minute laundry items
- Time delay to select end of time of your wash (1-24 hours) and time remaining indicator
- VarioDrum: gently and efficiently wash with even water distribution and without creasing garments.
- Anti-Vibration Side Panels reduce vibrations and ensure greater stability during the washing and spinning process.
- Foam detection system to remove excessive foam

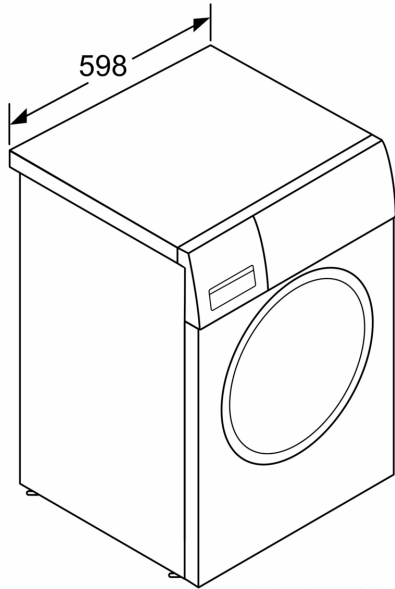
Safety

- Voltmonitor - monitors, regulates and feedback voltage fluctuations to manage unstable electrical supply to protect the washing machine and ensure a smooth wash cycle
- Multiple water protection with magnetic valve to minimise risk of leakage
- Child-proof lock

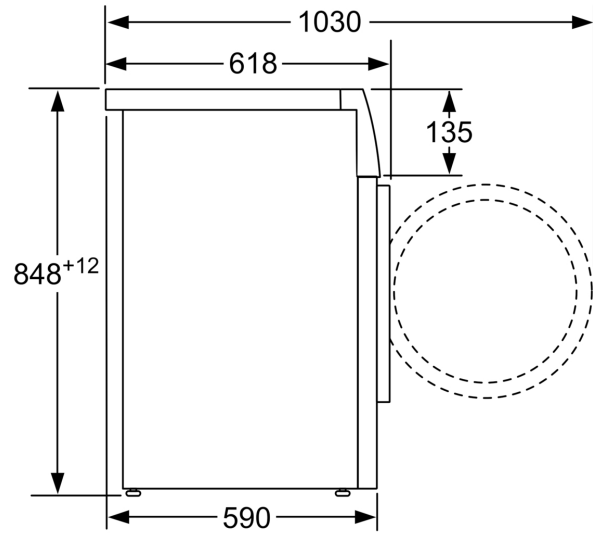
Display Screen & Alerts

- Large LED display screen to indicate: Programme status, Temperature and Spin Speed Selection, Remaining Time and 24 Hour End Time Delay.
- TouchControl buttons: Start/Reload, Anti Tangle, Speed, Delay Start, Spin Speed and Temperature Selection
- Buzzer at the end of the wash programme

**Series 4, washing machine, front loader, 8 kg, 1200 rpm
WAJ2416EIN**



measurements in mm



measurements in mm