

## Series 8, Heat pump tumble dryer, 7 kg WTW86561GB



WMZ20500	Platform with pull-out
WTZ10290	Cover plate
WTZ11300	Stacking kit with pull-out shelf
WTZ11310	Stacking kit

## The Logixx dryer with SelfCleaning Condenser™: the only life-long A+ dryer that cleans the condenser for you.

- **Auto Dry:** Automatically senses when your load is dried.
- **Anti Vibration sidewall:** extremely stable and quiet thanks to special vibration protection..
- **Sensitive Drying System:** for gentle drying without creases.
- **Sportswear:** ideal for gentle drying of textiles such as microfibre, synthetics or functional fibres.
- **SensitiveDrying System:** the unique drum structure protects and delivers a drying performance without creases.

Built-in / Free-standing:	Free-standing
Removable top:	Yes
Door hinge:	Right
Length electrical supply cord:	145.0 cm
Dimensions:	842x598x639 mm
Net weight:	55.3 kg
EAN code:	4242002708553
Connection rating:	1000 W
Fuse protection:	10 A
Voltage:	220-240 V
Frequency:	50 Hz
Loading capacity:	7.0 kg
Energy efficiency rating:	A+
Energy consumption electric dryer, full load - NEW (2010/30/EC):	1.85 kWh
Standard cotton programme time at full load:	155 min
Energy consumption electric dryer, partial load - NEW (2010/30/EC):	1.13 kWh
Standard cotton programme time at partial load:	100 min
Weighted annual energy consumption, electric dryer - NEW (2010/30/EC):	236.0 kWh/annum
Weighted programme time:	124 min
Average condensation efficiency full load (%):	86 %
Average condensation efficiency partial load (%):	86 %
Weighted condensation efficiency (%):	86 %



4 242002 708553

## Series 8, Heat pump tumble dryer, 7 kg WTW86561GB

### Technical Information

- Can be built-under
- Glass door, Alu-Look, anthracite-grey

## The Logixx dryer with SelfCleaning Condenser™: the only life-long A+ dryer that cleans the condenser for you.

### Performance

- Energy Efficiency Class: A+ at a range of energy efficiency classes from A+++ to D
- Capacity: 7 kg
- The programme Cotton cupboard dryused at full and partial load is the standard drying programme to which the information in the label and the fiche relates, this programme is suitable for drying normal wet cotton laundry and is the most efficient programme in terms of energy consumption for cotton.
- Energy consumption 236.0 kWh per year, based on 160 drying cycles of the standard cotton programme at full and partial load, and the consumption of the low-power modes. Actual energy consumption per cycle will depend on how the appliance is used
- Energy consumption of the standard cotton programme at full load 1.85 kWh and energy consumption of the standard cotton programme at half load 1.13 kWh
- Programme time of the standard cotton programme at full load 155 min and programme time of the standard cotton programme at partial load 100 min.
- Weighted programme time of the standard cotton programme at full and partial load: 124 min.
- Condensation efficiency class B on a scale from G (least efficient) to A (most efficient).
- Weighted condensation efficiency for the standard cotton programme at full and partial load: 86 %.
- Power consumption in off-mode 0.1 W and in left-on mode 1 W
- Duration of left-on mode: 0 minutes
- Noise level: 65 dB (A) re 1 pW

### Programmes/functions

- Fully electronic control dial for sensor drying, including timed and special programmes
- Special programmes: Woollens, Sportswear, Super Quick 40, Timed programme warm, Timed programme cold
- Touch control buttons: Start/Stop, Low heat, Reduced ironing, Menu, Change

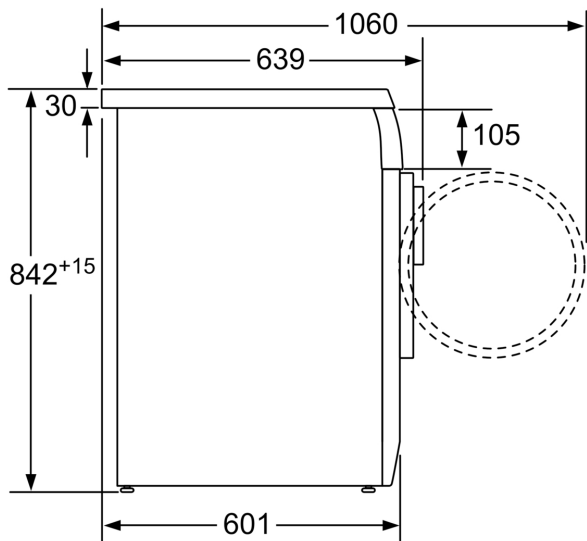
### Key features

- ActiveAir Technology
- AntiVibration design: for greater stability and quietness
- Heat Pump with self cleaning condenser

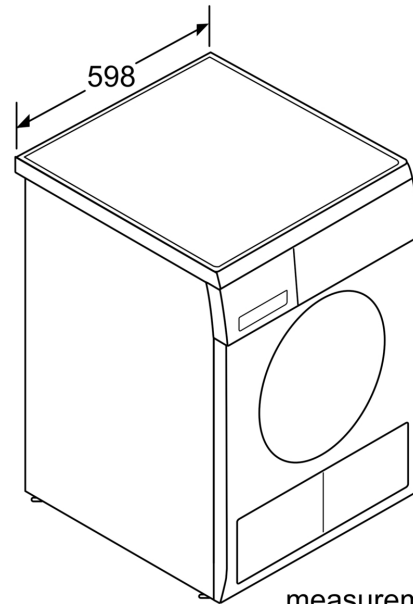
### Additional features

- LC display for remaining time, 24 hours time delay, programme progress indication, and special functions
- Sensitive drying: large stainless steel drum with textile care and revolution drying system
- Anti crease cycle 120 min at the end of the programme
- Drum interior light
- Buzzer to indicate the end of cycle
- Child Lock
- Metal door catch

**Series 8, Heat pump tumble dryer, 7  
kg  
WTW86561GB**



measurements in mm



measurements in mm