

Series 8, 175.6 x 91.2 cm, Black KAN92LB35G


A++

The NoFrost side-by-side fridge-freezer with indoor electronics: saves you from defrosting.

- **XXL capacity:** extra space for your food when you need it.
- **LED lighting:** all your items in perfect view.
- **Big Box drawer:** for stacking storage containers or for large frozen food items.
- **Easy Access Shelf:** a pull-out glass shelf for easier access to everything inside your fridge.
- **Two cooling systems:** separately controllable fridge and freezer compartments

Built-in / Free-standing: Free-standing
 Door panel options: Not possible
 Height: 1756 mm
 Width of the appliance: 912 mm
 Depth: 732 mm
 Net weight: 139.7 kg
 Connection rating: 190 W
 Fuse protection: 13 A
 Door hinge: left and right
 Voltage: 220-240 V
 Frequency: 50-60 Hz
 Length electrical supply cord: 240.0 cm
 Number of compressors: 1
 Number of independent cooling systems: 2
 Interior ventilator: No
 Reversible Door Hinge: No
 Number of Adjustable Shelves in fridge compartment: 3
 Shelves for Bottles: Yes
 EAN code: 4242002995397
 Brand: Bosch
 Product name / Commercial code: KAN92LB35G
 Frost free system: Fridge
 Installation typology: Free-standing
 Included accessories: 2 x cold accumulator, 1 x egg tray



Series 8, 175.6 x 91.2 cm, Black KAN92LB35G

The NoFrost side-by-side fridge-freezer with indoor electronics: saves you from defrosting.

Performance

- Energy consumption: 385 kWh kWh/yr.
- Total net capacity: 592 litres
- Net fridge capacity: 375 litres
- Net freezer capacity: 202 litres
- Noise level dB(A) re 1 pW: 43
- Climate class SN-T (suitable for ambient temperatures between 10 to 43°C)

Design features

- Twist ice dispenser in freezer
- Plastic Integrated vertical handle
- Automatic defrost fridge
- Two separate cooling circuits allow independent temperature control and prevents the transference of humidity between the fridge and freezer cavity
- MultiAirflow system - improves circulation of air around the fridge, ChillerBox - recommended storage area for meat and fish
- Bright interior LED fridge light
- Removable magnetic door seals - easy to clean
- Optical and acoustic door open alarm
- Freezer malfunction warning signal: optical and acoustical

Freshness System

- VitaFresh plus: keeps food fresh for up to twice as long

Additional features

- 4 safety glass shelves in fridge compartment of which 3 are height adjustable
- 4 safety glass shelves of which 3 are height adjustable, 1 EasyLift glass shelf, Extendable glass shelf, not divided 2 shelves extendable
- 2 freezer drawers
- Freezing capacity in 24 hours: 12 kg
- Maximum freezer storage time in power failure: 12 hours
- Left hinged, Right hinged door
- Height adjustable front feet

Functions

- Separate, electronic temperature control with LED display
- SuperCool function
- SuperFreezing function with automatic deactivation
- Freezer malfunction warning signal: optical and acoustical warning system

Key features - Fridge section

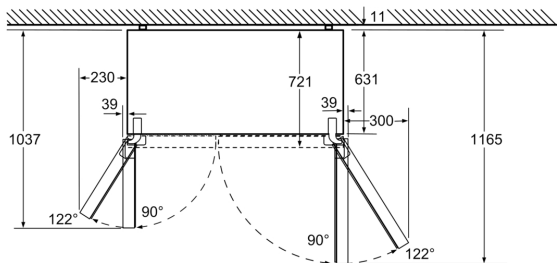
- 1 VitaFresh 0°C drawer - Fish and meat stay fresh for longer
- VitaFresh Plus container on telescopic rails and humidity control for prolonged food storage, 1 MultiBox drawer on telescopic rails - Transparent drawer with a corrugated bottom, ideal for storing fruits and vegetables.
- 2 removable door storage compartments.
- Door shelves in fridge door: 2 large and 3 small

- 2 x cold accumulator, 3 x egg tray
- 1 dairy compartment in door
- Bright interior LED fridge light

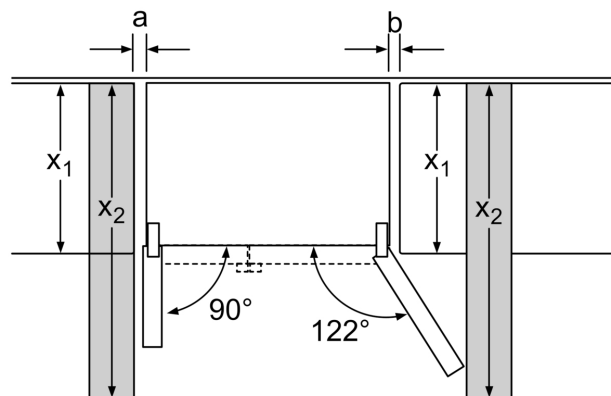
Key features - Freezer section

- 2 freezer drawers, drawers on telescopic rails (partially extendable)
- Door trays in freezer door: 5
- To achieve the declared energy consumption, the distanceholders have to be used. As a result, the appliance depth increases by about 3.5 cm. The appliance used without the distance holder is fully functional, but has a slightly higher energy consumption.
- Dimensions: 175.6 cm H x 91.2 cm W x 73.2 cm D

Series 8, 175.6 x 91.2 cm, Black KAN92LB35G

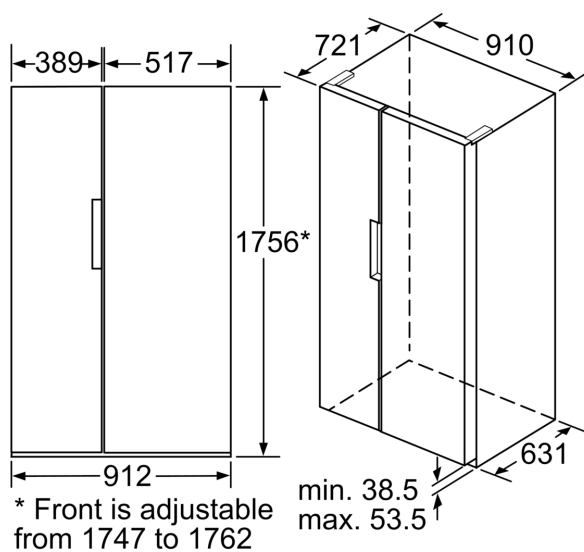


Chilling drawers can be pulled out completely at a door opening angle of 122°
measurements in mm



x_1 (unit depth)	a	b
600	39	39
650	39	53
700	39	85
x_2 (wall)	39	300

measurements in mm



measurements in mm