

**Serie | 6, American side by side, 175.6 x 91.2 cm, Inox-easyclean KAD92AI30**



**A++**

**The NoFrost side-by-side fridge-freezer with ice and water dispenser: cools very efficiently - refreshes you at the push of a button.**

- **Extra Large size:** provides much more space for your food.
- **MultiBox:** transparent drawer with wave bottom, ideal for the storage of fruits and vegetables
- **LED lighting** - with soft start, lasts for the lifetime of the appliance.
- **NoFrost:** never defrost again, thanks to perfect protection from ice formation - that saves time and effort.
- **BigBox frozen food drawer:** for stacking storage containers or for large frozen food items.

**Technical Data**

Built-in / Free-standing :	Free-standing
Door panel options :	Not possible
Height (mm) :	1756
Appliance Width (mm) :	912
Depth (mm) :	732
Net weight (kg) :	147.765
Connection Rating (W) :	190
Current (A) :	10
Door hinge :	left and right
Voltage (V) :	220-240
Frequency (Hz) :	50-60
Approval certificates :	CE, VDE
Length electrical supply cord (cm) :	240
Storage Period in Event of Power Failure (h) :	12
Number of compressors :	1
Number of independent cooling systems :	2
Interior ventilator :	No
Reversible Door Hinge :	No
Number of Adjustable Shelves in fridge compartment :	3
Shelves for Bottles :	Yes
Capacity of Water Tank [l] :	1.0
EAN code :	4242002811246
Brand :	Bosch
Product name / Commercial code :	KAD92AI30
Energy consumption annual (kWh/annum) - NEW (2010/30/EC) :	348.00
Refrigerator Net capacity (l) - NEW (2010/30/EC) :	368
Freezer Net capacity (l) - NEW (2010/30/EC) :	173
Frost free system :	Fridge and freezer
Freezing capacity (kg/24h) - NEW (2010/30/EC) :	12
Climate class :	SN-T
Noise level (dB(A) re 1 pW) :	42
Installation typology :	N/A



**Included accessories**

- 2 x cold accumulator
- 1 x connection hose
- 1 x egg tray



4 242002 811246

## Serie | 6, American side by side, 175.6 x 91.2 cm, Inox-easyclean KAD92AI30

**The NoFrost side-by-side fridge-freezer with ice and water dispenser: cools very efficiently - refreshes you at the push of a button.**

### Performance

- Energy consumption: 348 kWh kWh/yr.
- Total net capacity: 541 litres
- Net fridge capacity: 368 litres
- Net freezer capacity: 158 litres
- Noise level dB(A) re 1 pW: 42
- Climate class SN-T (suitable for ambient temperatures between 10 to 43°C)

### Design features

- Home Connect: iService Remote, Remote Monitoring and Control with Wi-Fi connectivity
- In-door ice and water dispenser: chilled water, crushed ice, ice cubes
- Water Filter Inside
- aluminium Vertical door handle
- No Frost
- Automatic defrost fridge
- Two separate cooling circuits allow independent temperature control and prevents the transference of humidity between the fridge and freezer cavity
- MultiAirflow system - improves circulation of air around the fridge, ChillerBox - recommended storage area for meat and fish
- Bright interior LED fridge light
- Removable magnetic door seals - easy to clean
- Optical and acoustical door open warning
- Freezer malfunction warning signal: optical and accoustical

### Freshness System

#### Additional features

- 4 safety glass shelves of which 3 are height adjustable, 1 EasyLift glass shelf, Extendable glass shelf, not divided 2 shelves extendable
- Freezing capacity in 24 hours: 12 kg
- Maximum freezer storage time in power failure: 12 hours
- Left hinged, Right hinged door
- Height adjustable front feet

### Functions

- Electronic control (external in-door LCD display)
- SuperCool function
- SuperFreezing function with automatic deactivation
- Freezer malfunction warning signal: optical and acoustical warning system

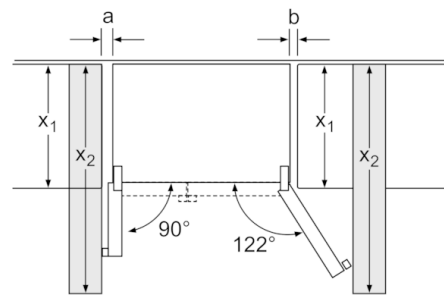
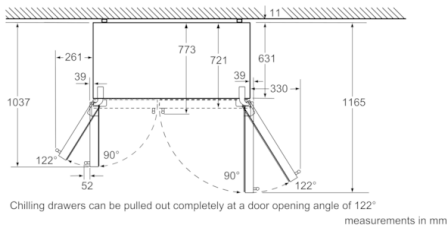
### Key features - Fridge section

- 1 VitaFresh ◀0°C▶ drawer - Fish and meat stay fresh for longer  
VitaFresh Plus container on telescopic rails and humidity control for prolonged food storage,  
1 MultiBox drawer on telescopic rails - Transparent drawer with a corrugated bottom, ideal for storing fruits and vegetables.
- 2 removable door storage compartments.
- Door shelves in fridge door: 2 large and 3 small
- 2 x cold accumulator, 1 x connection hose, 3 x egg tray
- 1 dairy compartment in door
- Bright interior LED fridge light

### Key features - Freezer section

- 2 freezer drawers, drawers on telescopic rails (partially extendable)
- Door trays in freezer door: 4
- To achieve the declared energy consumption, the distanceholders have to be used. As a result, the appliance depth increases by about 3.5 cm. The appliance used without the distance holder is fully functional, but has a slightly higher energy consumption.
- 1 VitaFresh plus drawer on telescopic rails with humidity control - Fruits and vegetables retain vitamins and stay fresh up to 2 times longer.  
Vegetable container on telescopic rails
- Dimensions: 175.6 cm H x 91.2 cm W x 73.2 cm D

**Serie | 6, American side by side, 175.6 x 91.2 cm, Inox-easyclean KAD92AI30**



$x_1$ (unit depth)	a b	
600	39	39
650	39	53
700	39	85
$x_2$ (wall)	105	330

measurements in mm

