

Series 4, American side by side, 175.6 x 91.2 cm, Inox-easyclean KAN92VI35



Included accessories

1 x egg tray

The A++ NoFrost side-by-side fridge-freezer with indoor electronics: saves you from defrosting - cools very efficiently.

- **Extra Large size:** provides much more space for your food.
- **VitaFresh:** keeps fresh food crisp for longer – thanks to extra low temperatures for fish and meat & adjustable humidity for fruit and vegetables
- **MultiBox:** transparent drawer with wave bottom, ideal for the storage of fruits and vegetables
- **LED light:** illuminates the refrigerator evenly without glare, lasts for the life of the appliance.
- **NoFrost:** never defrost again, thanks to perfect protection from ice formation - that saves time and effort.

Technical data

Built-in / Free-standing : Free-standing
 Number of compressors : 1
 Number of independent cooling systems : 2
 Width of the product : 912 mm
 Height : 1756 mm
 Depth of the product : 732 mm
 Net weight : 109.0 kg
 Door panel options : Not possible
 Door hinge : left and right
 Number of Adjustable Shelves in fridge compartment : 3
 Shelves for Bottles : No
 Interior ventilator : No
 Reversible Door Hinge : No
 Length electrical supply cord : 240 cm
 Noise level : 43 dB(A) re 1 pW
 Multi-Flow Air Tower : Yes
 Fast cooling switch : Yes
 Fast freezing switch : No
 Carbon Air Filter : No
 Temperature Controlled Drawer : No
 Humidity Control Drawer : No
 Number of Door Bins - Refrigerator : 4
 Door bin adjustability - Refrigerator : No
 Tilt-out door bins in fridge : Yes
 Number of Gallon storage : 2
 No. of shelves in fridge : 4
 Number of shelves - Freezer : 2
 Shelf Adjustability - Freezer : Yes
 Connection Rating : 190 W
 Fuse protection : 10 A
 Voltage : 220-240 V
 Frequency : 50-60 Hz
 Energy efficiency rating : A++
 Energy consumption annual - NEW (2010/30/EC) : 389.00 kWh/ annum
 Refrigerator Net capacity - NEW (2010/30/EC) : 387 l
 Freezer Net capacity - NEW (2010/30/EC) : 217 l
 Freezing capacity) - NEW (2010/30/EC) : 12 kg/24h
 Storage Period in Event of Power Failure (h) : 12 h
 Approval certificates : CE, Morocco, VDE
 Color / Material body : Chrome Inox-metallic
 Door panel options : Not possible
 Noise level : 43 dB(A) re 1 pW
 Energy Star Qualified : No
 Required cutout/niche size for installation (in) : x x
 Dimensions of the packed product : 74.25 x 38.58 x 31.10
 Net weight : 240.000 lbs
 Gross weight : 258.000 lbs
 Product name / Commercial code : KAN92VI35
 Included accessories : 1 x egg tray



Series 4, American side by side, 175.6 x 91.2 cm, Inox-easyclean KAN92VI35

The A++ NoFrost side-by-side fridge-freezer with indoor electronics: saves you from defrosting - cools very efficiently.

Supplied accessories

- egg tray
- Total gross capacity: 659 l
- Gross fridge capacity: 407 l
- **** freezer 252 l (-18°C and below)

Consumption

- Energy efficiency class: A++
- Energy consumption: 389 kWh/yr
- Total net capacity: 604 litres
- Noise level: 43 dB

Design

- inox EasyClean doors and Metallic chrome side panels
- Interior LED lighting in fridge section

Features

- NoFrost
- Supercool function with automatic switch off
- Automatic switch off
- Automatic defrost in fridge section
- Optical and accoustic door open warning system
- Freezer malfunction warning signal: Active Warning System by Temperatur increase

Fridge section

- Net fridge capacity: 387 litres
- Multi Airflow-System
- 2 door shelf large, 2 door shelf small
- Dairy compartment

Freezer section

- Net freezer capacity: 202 litres
- Freezing capacity: 12 kg in 24 hours
- Storage time in power failure: 12 H
- 4 Safety glass shelves, 2 are height adjustable
- 2 PC, Pull out drawer on extension rail systems
- Easy twist ice box, Easy twist ice box
- LED illumination in freezer section

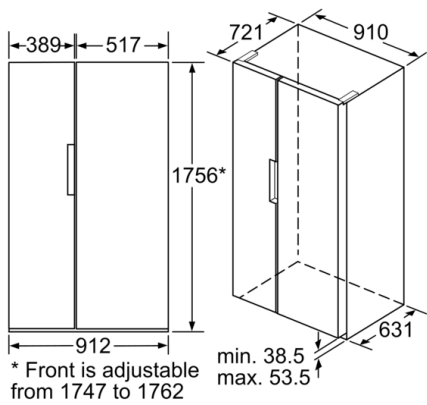
Appliance Dimension

- Dimensions: 175.6 cm (H) x 91.2 cm (W) x 73.2 cm (D)

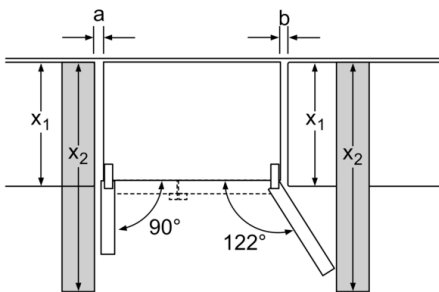
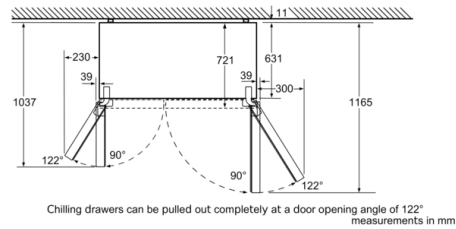
Technical information

- Door-closing aid
- Connected load: 190 W
- 220 - 240 V

**Series 4, American side by side, 175.6 x 91.2 cm, Inox-easyclean
KAN92VI35**



measurements in mm



x_1 (unit depth)	a	b
600	39	39
650	39	53
700	39	85
x_2 (wall)	39	300

measurements in mm