

**Serie | 8, compact built-in oven,  
Stainless steel  
CBG635BS1**

**A<sup>+</sup>**



**Included accessories**

1 x combination grid  
1 x universal pan

**Optional accessories**

HEZ327000 : Pizza stone

**The powerful compact oven: so you can  
enjoy great cooking convenience even in  
smaller spaces.**

- **AutoPilot 10:** every dish is a perfect success thanks to 10 pre-set automatic programmes.
- **TFT display control:** easy-to-use thanks to the control ring with full text and symbols.
- **Energy efficiency class A<sup>+</sup>:** Best baking results with lower energy consumption.
- **Flap door with SoftOpen and SoftClose:** the oven door opens and closes especially gently and quietly.

**Technical data**

Color / Material Front :	Stainless steel
Built-in / Free-standing :	Built-in
Integrated Cleaning system :	No
Required niche size for installation (HxWxD) :	450-455 x 560-568 x 550
Dimensions of the product (mm) :	455 x 594 x 548
Dimensions of the packed product (HxWxD) (mm) :	520 x 710 x 650
Control Panel Material :	Stainless steel
Door Material :	Glass
Net weight (kg) :	29.164
Usable volume of cavity (l) :	47
Cooking method :	, 4D hot air, Bottom heat, Conventional heat, Defrost, Full width grill, Half width grill, Hot Air-Eco, Hot air grilling, low temperature cooking, Pizza setting, pre-heating, warming
First cavity material :	Enamelled
Number of interior lights :	1
Approval certificates :	CE, VDE
Length electrical supply cord (cm) :	150
Interior Lights - cavity 1 :	1
Pull-out system :	Accessory
Clock function :	Alarm, Off, On
Included accessories cavity 1 :	1 x combination grid, 1 x universal pan
Broil Element Wattages Cavity 1 (kW) :	2800
Convection Element Wattages Cavity 1 (kW) :	1600
Energy efficiency class (2010/30/EC) :	A <sup>+</sup>
Energy consumption per cycle conventional (2010/30/EC) :	0.73
Energy consumption per cycle forced air convection (2010/30/EC) :	0.61
Energy efficiency index (2010/30/EC) :	81.3
Connection Rating (W) :	2990
Current (A) :	13
Voltage (V) :	220-240
Frequency (Hz) :	60; 50
Plug type :	Gardy plug w/ earthing
Color / Material Front :	Stainless steel
Energy input :	Electric
Approval certificates :	CE, VDE
Required cutout/niche size for installation (in) :	x x
Dimensions of the packed product (in) :	20.47 x 25.59 x 27.95
Net weight (lbs) :	64.000
Gross weight (lbs) :	69
Length electrical supply cord (cm) :	150
Net weight (kg) :	29.164
Gross weight (kg) :	31.0



4 242002 808512

## **Serie | 8, compact built-in oven, Stainless steel CBG635BS1**

**The powerful compact oven: so you can enjoy great cooking convenience even in smaller spaces.**

### **Technical Information:**

- Length of mains cable: 150 cm
- Total connected load: 2.99kW

### **Dimensions (H x W x D):**

- 455 mm x 594 mm x 548 mm
- Please reference the built-in dimensions provided in the installation drawing

---

### **Programmes/ Additional Features:**

- 13 heating methods:  
4D hot air, Hot Air-Eco, Top and bottom heating, Top and bottom heating Eco, Hot air grilling, Radiant grill large area, Radiant grill small area, Pizza setting, Bottom heat, Slow cooking, Defrost setting, Plate warming setting, Keep warm

### **Design:**

- Rotary swivel knobs control
- Cavity inner surface: Enamel anthracite

### **Key Features:**

- ecoClean® Plus: back panel
- Temperature range 30 °C - 300 °C
- Cavity volume: 47L

### **Feature:**

- Full glass inner door
- Triple glass cool touch door (40° C door temperature)
- Temperature proposal  
Actual temperature display  
Heating-up control  
automatic programmes  
Sabbath setting
- Automatic programmes
- Number of automatic programmes: 10 PC
- Electronic clock
- Rapid heating-up
- Halogen interior lighting, Switch for oven illumination
- Stainless-steel fan
- Info button
- Bar handle

### **Hook-in racks / rails**

- Cavity with shelf support

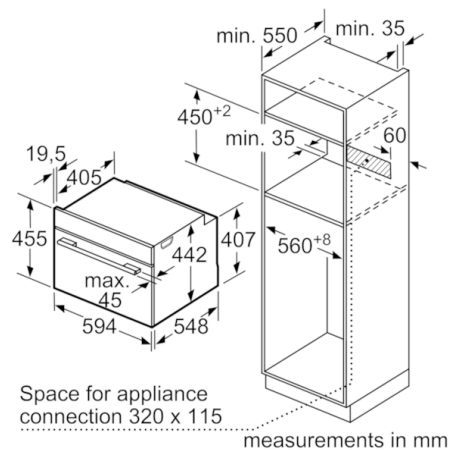
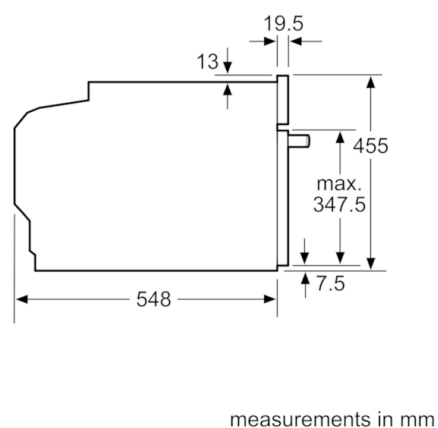
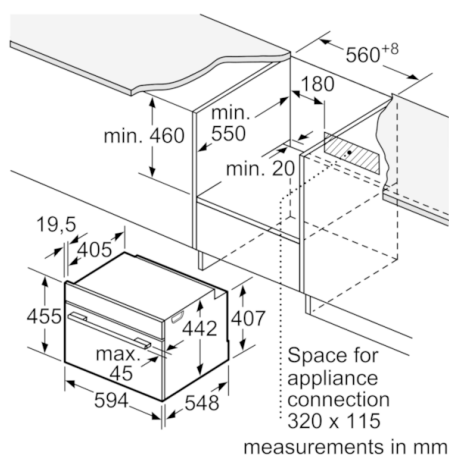
### **Accessory:**

- 1 x combination grid, 1 x universal pan

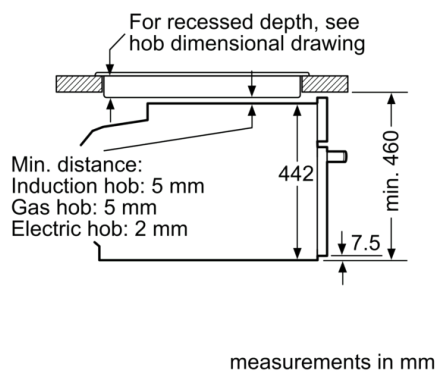
### **Safety:**

- Childproof lock  
Automatic switch off  
Residual heat indicator  
Start button  
Door contact switch

## Serie | 8, compact built-in oven, Stainless steel CBG635BS1



Installation with a hob.



If the compact appliance will be installed underneath a hob, the following worktop thicknesses (including substructure if necessary) must be taken into account.

Hob type	min. worktop thickness	
	fitted	flush
Induction hob	42 mm	43 mm
Full surface Induction hob	52 mm	53 mm
Gas hob	32 mm	43 mm
Electric hob	32 mm	35 mm