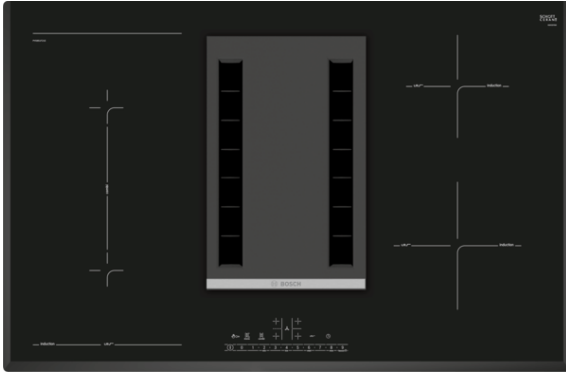


Serie | 6, Induction hob with integrated ventilation system, 80 cm PVS851F21E

A



Optional accessories

- HEZ381401 : Exhaust kit
- HEZ381501 : Recirculating kit
- HEZ381700 : Recirculation filter
- HEZ390042 : Set of 3 pots and 1 pan

The induction hob with integrated ventilation module: combines induction with ventilation technology for perfect results.

- **DirectSelect:** Direct, simple selection of the desired cooking zone, power and additional functions.
- **CombiZone:** More flexibility by combining two cooking zones, for roasters and the like.
- **Induction:** Fast, precise cooking, easy cleaning and low energy consumption.
- **AutoOn function:** Automatically starts the ventilation module on power level 3, when you start cooking.

Technical Data

Product name/family :	Cooking zone ceramic
Construction type :	Built-in
Energy input :	Electric
Required niche size for installation (HxWxD) :	198 x 780-780 x 490-500
Width of the product (mm) :	802
Dimensions of the product (mm) :	198 x 802 x 522
Dimensions of the packed product (HxWxD) (mm) :	330 x 940 x 760
Net weight (kg) :	26.595
Gross weight (kg) :	33.0
Residual heat indicator :	without
Location of control panel :	Hob front
Basic surface material :	Ceramic
Color of surface :	Black
Approval certificates :	CE, VDE
Length of electrical supply cord (cm) :	110
Sealed Burners :	No
heating with booster :	All
Power of 2nd heating element (kW) :	3.6
Power of 5th heating element (kW) :	1.4
Maximum output air extraction (m ³ /h) :	551
Boost position output recirculating (m ³ /h) :	620
Maximum output recirculating air (m ³ /h) :	557
Boost position air extraction (m ³ /h) :	689
Noise level (dB(A) re 1 pW) :	70
Odour filter :	No
Operating Mode :	Convertible
Delay Shut off modes :	30
Grease filter type :	Kassette
Electrical connection rating (W) :	6900
Voltage (V) :	220-240
Frequency (Hz) :	60; 50
Main colour of product :	Black
Approval certificates :	CE, VDE
Length of electrical supply cord (cm) :	110
Required niche size for installation (HxWxD) :	198 x 780-780 x 490-500
Dimensions of the product (mm) :	198 x 802 x 522
Dimensions of the packed product (HxWxD) (mm) :	330 x 940 x 760
Net weight (kg) :	26.595
Gross weight (kg) :	33.0



Serie | 6, Induction hob with integrated ventilation system, 80 cm PVS851F21E

The induction hob with integrated ventilation module: combines induction with ventilation technology for perfect results.

Design

- 802 mm
- Three sided bevelled frameless finish

Control:

- Frying Sensor: 4 frying levels

Special features

- DirectSelect
- Digital display
- ReStart function
- QuickStart function
- Timer for all zones
Timer - shows how long the cooktop is in use

Quickness:

- PowerBoost function for all zones

Power and size:

- 4 induction cooking zones
- Combi zone
- Variable 17-stage power settings for each zone
- Cooking zones: 1 x Ø 210 mm, 2.2 KW (max. Power levels 3.7 KW) Induction; 1 x Ø 210 mm, 2.2 KW (max. Power levels 3.7 KW) Induction; 1 x Ø 145 mm, 1.4 KW (max. Power levels 2.2 KW) Induction; 1 x Ø 180 mm, 1.8 KW (max. Power levels 3.1 KW) Induction
- Connected load: 6.9 kW
- Voltage: 220 - 240 V

Safety Features

- Individual energy consumption display
- 2 stage residual heat indicator for each zone
- Automatic pan recognition sensor
Automatic safety shut off
Control panel lock
Control panel lock function
- Main on/off switch

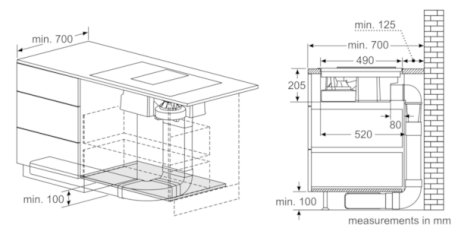
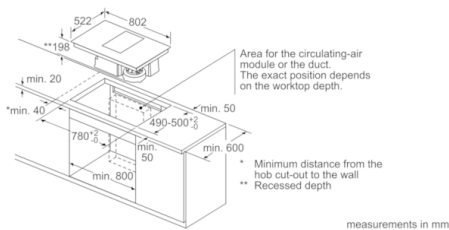
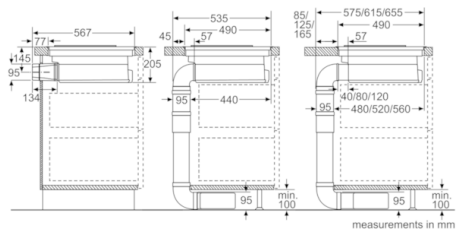
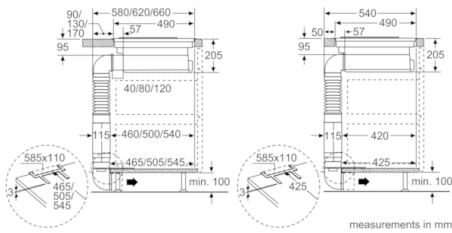
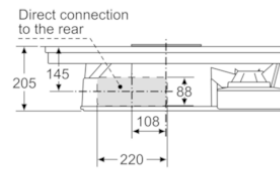
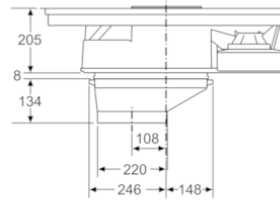
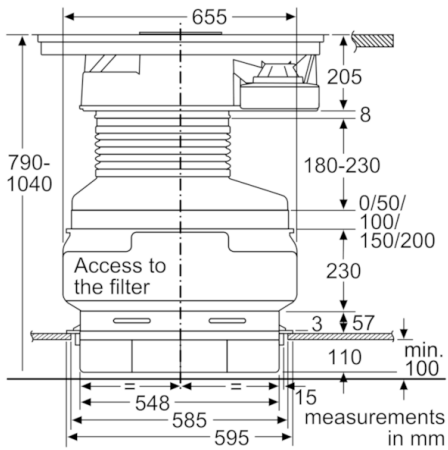
Technical information

- Min. worktop thickness: 20 mm
- Cable included
- Length wire connection: 110 cm
- Measurement: (H/B/T) 198 x 802 x 522 mm
- Energy Efficiency Class: A (at a range of energy efficiency classes from A+++ to D)
- Average Energy Consumption: 53.5 kWh/year
- Blower Efficiency Class: A
- Grease Filtering Efficiency Class: B
- Noise min./max. Normal Level: 39/69 dB
- Induction cooktop with integrated downdraft extractor
- Suitable for ducted or re-circulated extraction (Accessory is respectively needed)
- For ducted extraction extraction kit (accessory HEZ381401) needed
- For recirculated extraction cleanAir recirculating kit (accessory HEZ381501) needed
- Fully-automatic extraction functionality with climateControl sensor
- Fully-automatic fan speed level control or optionally manual control by user
- 9 speeds plus 1 intensive
- Automatic 30 minutes after running
- Extraction rate according to EN 61591:
 - min. Normal use 150m³/h
 - max. Normal use 550 m³/h
 - Intensive setting 690 m³/h
- Noise level according to EN 60704-3 und EN 60704-2-13 exhaust air:
 - Min. normal use: 39 dB(A) re 1 pW (25 dB(A) re 20 µPa sound pressure)
 - Max. normal use: 69 dB(A) re 1 pW (55 dB(A) re 20 µPa sound pressure)
 - Intensive: 76 dB(A) re 1 pW (62 dB(A) re 20 µPa sound pressure)
- Performance in re-circulated extraction:
 - min. normal setting 139 m³/h
 - max. normal setting 557 m³/h
 - Boost-/Intensive setting 620 m³/h
- Noise level in re-circulated extraction:
 - min. normal setting 42 dB(A) re 1 pW (31 dB(A) re 20 µPa sound pressure)
 - max. normal setting 73 dB(A) re 1 pW (62 dB(A) re 20 µPa sound pressure)
 - Boost-/Intensive setting 75 dB(A) re 1 pW (62 dB(A) re 20 µPa sound pressure)
- Grease filter efficiency: 90 %
- Odour reduction rate: 85 %
- Large-scale stainless-steel grease filters with 12 layers for high grease filtration efficiency (up to 90% odour reduction)
- Cast-iron air inlet grid, heat resistant, dishwasher safe
- Removable and detachable grease filter and liquid collector unit, dishwasher safe
 - integrated stainless steel grease filters, dishwasher safe
 - condensate and liquid collector unit; ca. 200ml capacity; dishwasher safe
- Polymer liquid spillover safety tank, ca. 2.000ml capacity, Twist-off lock, dishwasher safe
- Saturation indicator for cleanAir odour filter

Installation Advice

- Base cupboard width: min. 80 cm.
- Worktop depth: min. 60 cm (with shortened drawers), max. drawer's depth can be used starting with a worktop depth of 70 cm.
- Immersion depth: 19.8 cm
- Modules for ducted extraction or re-circulated extraction must be ordered separately as special accessory.

**Serie | 6, Induction hob with integrated ventilation system, 80 cm
PVS851F21E**



**Serie | 6, Induction hob with integrated
ventilation system, 80 cm
PVS851F21E**

