

Serie | 6, American side by side, 175.6 x 91.2 cm, Inox-easyclean KAD92AI20G



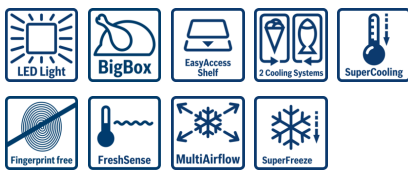
A+

The NoFrost side-by-side fridge-freezer with 3 MultiBoxes: extra room for your fresh fruits and vegetables.

- **Ice dispenser:** dispenses ice cubes at the push of a button.
- **Extra Large size:** provides much more space for your food.
- **MultiBox:** transparent drawer with wave bottom, ideal for the storage of fruits and vegetables
- LED lights bring a completely new lighting concept to fridges
- **NoFrost:** never defrost again, thanks to perfect protection from ice formation - that saves time and effort.

Technical Data

Construction type :	Free-standing
Door panel options :	Not possible
Height (mm) :	1756
Width of the product (mm) :	912
Depth of the product :	732
Net weight (kg) :	127.765
Connection rating (W) :	190
Current (A) :	13
Door hinge :	Left & Right
Voltage (V) :	220-240
Frequency (Hz) :	50-60
Approval certificates :	CE, VDE
Length of electrical supply cord (cm) :	240
Storage Period in Event of Power Failure (h) :	12
Number of compressors :	1
Number of independent cooling systems :	2
Interior ventilator :	No
Reversible Door Hinge :	No
Number of Adjustable Shelves in fridge compartment (Stck) :	3
Shelves for Bottles :	Yes
Capacity of Water Tank [l] :	1.0
EAN code :	4242002965796
Brand :	Bosch
Product name / Commercial code :	KAD92AI20G
Energy efficiency rating :	A+
Energy consumption annual (kWh/annum) - NEW (2010/30/EC) :	443.00
Refrigerator Net capacity (l) - NEW (2010/30/EC) :	368
Freezer Net capacity (l) - NEW (2010/30/EC) :	173
Frost free system :	Fridge and freezer
Temperature rise time (h) :	12
Freezing capacity (kg/24h) - NEW (2010/30/EC) :	12
Climate class :	SN-T
Noise level (dB(A) re 1 pW) :	43
Installation type :	N/A



Optional accessories

- FIZ50000 : Water filter
 KSZ63000 : water hose extension



Serie | 6, American side by side, 175.6 x 91.2 cm, Inox-easyclean KAD92AI20G

The NoFrost side-by-side fridge-freezer with 3 MultiBoxes: extra room for your fresh fruits and vegetables.

Performance

- Energy consumption: 443 kWh kWh/yr.
- Total net capacity: 541 litres
- Net fridge capacity: 368 litres
- Net freezer capacity: 158 litres
- Noise level dB(A) re 1 pW: 43
- Climate class SN-T (suitable for ambient temperatures between 10 to 43°C)

Design features

- Home Connect: iService Remote, Remote Monitoring and Control with Wi-Fi connectivity
- Automatic ice cube maker
- Internal water filter
- Aluminium Vertical door handle
- No Frost
- Automatic defrost fridge
- Two separate cooling circuits allow independent temperature control and prevents the transference of humidity between the fridge and freezer cavity
- MultiAirflow system - improves circulation of air around the fridge, ChillerBox - recommended storage area for meat and fish
- Bright interior LED fridge light
- Removable magnetic door seals - easy to clean
- Optical and acoustical door open warning
- Freezer malfunction warning signal: optical and accoustical

Freshness System

- VitaFresh plus: keeps food fresh for up to twice as long

Additional features

- 4 removable safety glass shelves of which 3 are height adjustable. Extendable glass shelf 1 EasyLift glass shelf , 1 wire bottle rack
- Freezing capacity in 24 hours: 12 kg
- Maximum freezer storage time in power failure: 12 hours
- Left hinged, Right hinged door
- Height adjustable front feet

Functions

- Electronic control (external in-door LCD display)
- Super Cooling: automatic deactivation
- SuperFreezing function with automatic deactivation
- Freezer malfunction warning signal: optical and acoustical warning system

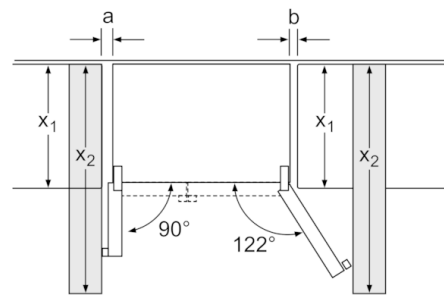
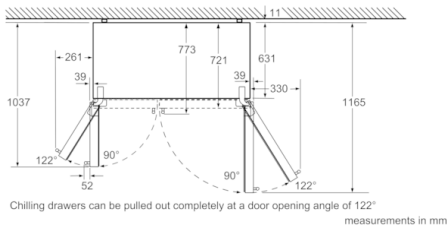
Key features - Fridge section

- 1 VitaFresh drawer - Fish and meat stay fresh for longer VitaFresh Plus container on telescopic rails with humidity control for prolonged food storage, 1 MultiBox drawer on telescopic rails - Transparent drawer with a corrugated bottom, ideal for storing fruits and vegetables.
- 2 removable door storage compartments.
- Door shelves in fridge door: 2 large and 3 small.
- 2 x cold accumulator, 1 x connection hose, 3 x egg tray
- 1 dairy compartment in door
- Bright interior LED fridge light

Key features - Freezer section

- 2 freezer drawers, drawers on telescopic rails (partially extendable)
- Door trays in freezer door: 4
- To achieve the declared energy consumption, the distanceholders have to be used. As a result, the appliance depth increases by about 3.5 cm. The appliance used without the distance holder is fully functional, but has a slightly higher energy consumption.
- Dimensions: 175.6 cm H x 91.2 cm W x 73.2 cm D

Serie | 6, American side by side, 175.6 x 91.2 cm, Inox-easyclean KAD92AI20G



X ₁ (unit depth)	a b	
600	39	39
650	39	53
700	39	85
X ₂ (wall)	105	330

measurements in mm

