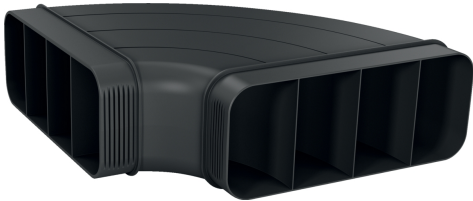


Flat duct, 90 °, horizontal HEZ9VDSB1



- 90° flat duct bend element (male) in horizontal configuration
- Aerodynamically optimised design to minimise pressure loss and maximise air flow rate. Easy-to-cut & easy-to-connect via the female connector sleeve element.
- The element complies with the Needle Flame Test (according to IEC 60695-11-5) & the V2 flammability class (according to UL94).

Technical Data

Dimensions of the packed product (HxWxD):130x300x305 mm
Pallet dimensions: 205.0 x 80.0 x 120.0
Quantity per packing unit: 5
Standard number of units per pallet:100
Net weight:0.6 kg
Gross weight: 1.0 kg
EAN code:4242005253838



Flat duct, 90 °, horizontal
HEZ9VDSB1

measurements in mm

