

**Serie | 2, Built-under cooker hood, 60 cm, Stainless steel  
DHU625MGB**

- An impressive extraction rate of 270 m<sup>3</sup>/h ensures this hood will have your kitchen odour free in no time.
- Halogen lighting provides energy efficient and bright lighting of the hob area.

**E**



**Technical Data**

Typology :	Traditional
Approval certificates :	CE, VDE
Length of electrical supply cord (cm) :	130
Minimum distance above an electric hob :	500
Minimum distance above a gas hob :	650
Net weight (kg) :	8.056
Type of control :	mechanical
Number of speed settings :	3
Maximum output air extraction (m <sup>3</sup> /h) :	270
Maximum output recirculating air (m <sup>3</sup> /h) :	50
Number of lights (Stck) :	2
Noise level (dB(A) re 1 pW) :	68
Diameter of air outlet (mm) :	120
Grease filter material :	Washable aluminium
EAN code :	4242002497723
Connection rating (W) :	180
Voltage (V) :	220-240
Frequency (Hz) :	50
Plug type :	GB plug
Installation type :	Built-under

**Optional accessories**

DHZ2400 : Active carbon filter



## **Serie | 2, Built-under cooker hood, 60 cm, Stainless steel DHU625MGB**

---

### **Design**

- 60 cm wide
- Designed for wall mounted installation or suspended beneath a reduced height wall cupboard

### **Features**

- Push button control for extractor speeds and light
- 3 power levels
- 2 x 20W low energy halogen lights
- 2 removable metal grease filter cassettes

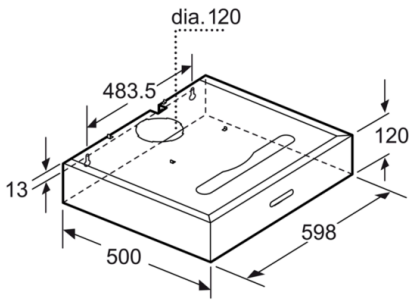
### **Performance/technical information**

- Suitable for ducted or recirculating operation
- Extraction rate according to EN 61591: max. 270 m<sup>3</sup>/h
- Noise level according to EN 60704-3 and EN 60704-2-13 at maximum normal setting: extraction rate: 68 dB(A) re 1 pW (54 dB(A) re 20 µPa sound pressure)

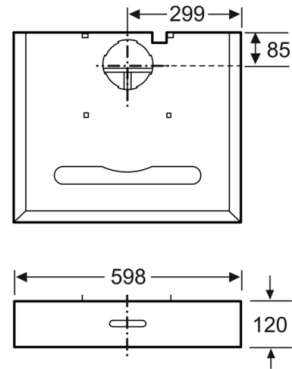
### **Optional accessories**

- Charcoal odour filter DHZ2400

**Serie | 2, Built-under cooker hood, 60 cm,  
Stainless steel  
DHU625MGB**



measurements in mm



Measurements in mm