



BOSCH
Invented for life

Your perfect laundry companion.

The Washer and Dryer you can depend on.

EUROPE'S
BRAND **No.1***



WEBSITE

www.bosch-home.com.my

More privileges when you register as myBosch member

FOR MORE INFORMATION

CUSTOMER SERVICE

+603 7950 9338

bshpet.service@bshg.com

Whilst every care has been taken in the preparation of this publication, Bosch does not warrant the accuracy or completeness of the information in this publication and Bosch reserves the right to alter specifications without notice. To the extent permitted by law, Bosch excludes all liability, including negligence, for any loss incurred in reliance on the contents of this publication.

©Copyright 2019 by BSH Home Appliances Sdn. Bhd. Company registration no. 711053-H. Printed in Malaysia.

*For major domestic appliances. Source: Euromonitor, volume sales, 2018.

Bosch in every detail.

Quality comes from experience.

No single appliance leaves our factory until it has been proven to meet our high standards of quality, performance and sustainability. This was Robert Bosch's promise when he opened his first workshop in 1886, and this is the promise we strive to keep today. To help us achieve this, we are constantly developing new manufacturing processes.



Why choose Bosch?



Bosch quality

Every Bosch washer that leaves our factory complies with stringent standards. All sub-assemblies and components undergo thorough inspection before they are included in the production of your new Bosch washing machine. To demonstrate our commitment to quality, a further 2-3% of all production is resubmitted for quality audits. We stand proud by all our products when they leave the factory so you have the confidence you have come to rely on when your appliance arrives.



Green Technology inside

The signet denotes products that focus on energy and water efficiency while achieving top performance based on Bosch technologies – and, like all Bosch products, have been manufactured with the aim of minimising their impact on the environment. The signet stands for the resource-efficiency of our products – quite simply, for their “Green Technology”.



10 Year EcoSilence Drive™ motor warranty

The EcoSilence Drive™ is Bosch's most powerful motor to date. Instead of supplying electricity to the rotating armature via carbon brushes, we equipped the armature itself with extremely strong permanent magnets. As a result, we are able to offer a 10-year motor warranty on washing machine models that feature the EcoSilence Drive™.

Breakthrough innovation

Hygienically clean at low temperatures.

Thanks to our wfk-certified breakthrough ActiveOxygen™ technology, up to 99.99%* of bacteria and germs are effectively eliminated from even the most delicate fabrics. Even if you choose to wash your clothes at low temperatures to preserve their colours, you can still be assured of optimum hygiene levels without the use of chemical additives. Experience the best possible cleaning result that ensures your favourite clothes are well taken care of.



It's as simple as this:

1

Select your preferred wash programme and activate ActiveOxygen™.

2

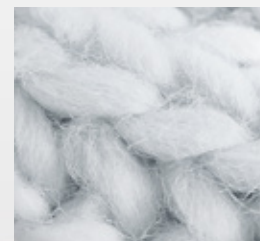
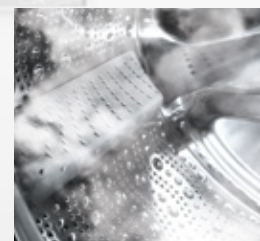
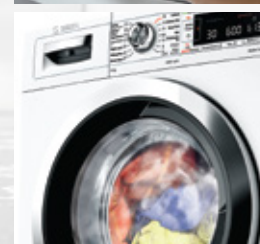
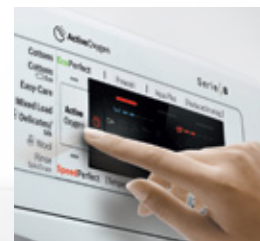
During the selected wash cycle, clothes and textiles are thoroughly washed and cleaned.

3

Your laundry is treated with ActiveOxygen™ before the final spin cycle.

Results

Up to 99.99% of germs and bacteria removed with ActiveOxygen™ technology.



* Up to 99.99% of E.coli, C. albicans, S. enterica, A. brasiliensis, S. aureus, Bacteriophage MS2 in the "Fast/mix cold" programme with regular liquid detergent in the recommended amount and a 4kg load – test MB 7623/15 of 29 July 2015 at the wfk – Institute for Applied Research GmbH for BSH Hausgeräte GmbH.

Automatic dosing

The key to cleanliness is precision.

Using too much detergent can result in higher water and energy consumption, as well as visible accumulation of detergent residue on your clothes. On the other hand, too little detergent may lead to stains not being completely removed, discolourations and unpleasant odours. Bosch i-DOS solves this problem by carefully determining the exact wash conditions before dispensing the precise amount of detergent to deliver perfect wash results.

Using i-DOS

To use i-DOS, simply fill the practical tank with up to 1.3 litres of liquid detergent, which is sufficient for several wash cycles. This minimises water usage during the rinsing process to complete cycles faster, save energy, as well as conserve up to 7,062* litres of water per year and up to 30% of liquid detergent per wash cycle.

Using integrated sensors, i-DOS then dispenses the detergent automatically – right down to the nearest millilitre. The system also detects the type of fabric, the load volume in the drum, the degree of soiling, and even water hardness. All you need to do to achieve perfect laundry results with i-DOS is press “Start”.

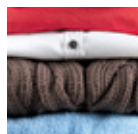
*Saving potential with an average of 220 washing loads/year, source: wfk, Institute for Applied Research, Study Report 5132/10. Individual results may vary.

How i-DOS works

i-DOS considers:



Load size



Textile type



Degree of soiling



Degree of water hardness

On this basis, the amount of detergent is dosed optimally and down to the nearest millilitre.

Manual dosing

Of course, you can continue to dose manually if you so wish, for all programs apart from the automatic ones. This is ideal when, for instance, you want to use a special detergent, powder or stain-removing agent.

Detergent chamber i-DOS 2

This chamber is for 0.5 litres of liquid detergent or liquid fabric conditioner.

Detergent chamber i-DOS 1

This chamber holds up to 1.3 litres of liquid detergent (e.g. all-purpose or colour).



Perfect results made easy with Bosch front load washer.



EcoSilence Drive™

Without using carbon brushes like traditional motors, our innovative EcoSilence Drive™ friction-free motor minimises any heat and wear. The result – a drive system that is not only powerful and long lasting, but also one of the most silent in operation.



VarioDrum™

As the drum spins in one direction, the flat side of the paddle inside the drum provides gentle cleaning for fine textiles. In the opposite direction, the steep side of the paddle cleans any soiled garments thoroughly. The wave-droplet design boosts additional surface contact with your clothing in both directions for an ideal wash.



AntiVibration Design™

The special AntiVibration Design™ of the side walls makes the Bosch washing machines and dryers extremely quiet. It helps reduce vibrations and ensures greater stability so you can do your washing without disturbing your loved ones.



VarioPerfect™

You can set most programs to be quicker or more efficient with the SpeedPerfect and EcoPerfect functions. This reduces time by up to 65% or energy by up to 50%.

ActiveWater™ technology

All Bosch washing machines feature an automatic load sensing function that adapts the water consumption to the relevant load size.

ActiveWater™ Plus

Technology takes this to the next level of intelligence boasting up to 256 load levels, which can detect the precise of water flowing into the machine. This means 1kg of laundry can be washed just as efficiently as a full 8kg load.

AquaStop™ anti-flood protection

The AquaStop™ system provides 100% anti-flood protection* and is guaranteed for the entire service life of the appliance.

Drum Clean Programme

To prevent odour build-up, a drum clean is recommended before first use of your washing machine, and if you regularly wash at 40°C or lower.

Duvet Programme

This programme uses higher water levels for washing and rinsing. Ideal for washing larger textiles such as quilts, duvets, blankets, bedcovers and pillows filled with synthetic fibers up to 2.5kg.

Allergy Plus Programme

A higher water level, longer spin cycles and a higher water temperature (e.g. 60°C) wash away detergent residues left in the laundry for exceptional hygienic cleaning. Good news for those with sensitive skin.

Easy Iron

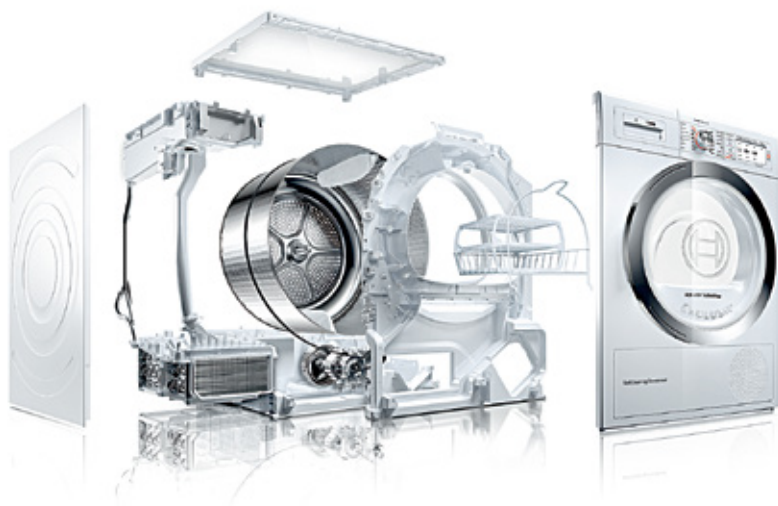
Clothes are tumbled gently with a special spin sequence followed by fluffing and reduced spin speed. This keeps laundry fluffy and tangle-free for reduced creasing and easy ironing.

Reload function

This allows you to add additional items of laundry during up to 89% of the wash cycle if it is within safe water and temperature levels.



Perfect results made easy with Bosch dryers.



The Bosch dryer range includes heat pump with ActiveAir technology, condenser and vented dryers.

ActiveAir technology

ActiveAir dryers are one of the most economical dryers on the market. The heat pump technology is designed to work without conventional heating. The air used for drying is heated by the heat pump and the existing heat is reused efficiently during the entire drying process.

Condenser

Condenser dryers collect the condensed water vapour that occurs during the drying process in an easy-to-access container. As a result they do not require an external wall vent.

Vented

Vented dryers exhaust the water vapour through a pipe at the back of the dryer, which must ventilate directly into the open air through an outside wall vent.

AutoDry

Intelligent sensors monitor the temperature and residual moisture content throughout the drying process to ensure your garments are dried precisely to the desired setting without over or under heating. This ensures garments are treated with maximum care whether you select iron, cupboard or extra dry programs.



SelfCleaning Condenser™

The patented SelfCleaning Condenser™ not only saves you the chore of manual cleaning. It also ensures the dryer performs economically with optimal energy efficiency.

Sensitive Drying System

A textile-friendly drum design and SoftFlow® paddles ensure soft, fluffy laundry. The large capacity drum (depending on model) additionally protects laundry and reduces creasing.



Low Heat Delicates

Bosch dryers have an innovative low heat feature that protects temperature sensitive textiles by automatically reducing the heat and extending the drying time.

Anti-Crease Cycle

Bosch dryers feature an anti-crease programme to reduce the burden of ironing. A gentle drum action automatically separates and smoothens your garments for up to 60 minutes on standard dryers, or 120 minutes for models with the reduced ironing option, to keep them wrinkle-free and ready-to-go.



WAK20060SG
Series 4
Front Load Washer



WAT24481SG
Series 6
Front Load Washer



Specifications		Specifications	
Capacity	• 7kg Capacity	Capacity	• 8kg Capacity
Design	• LED indication of programme status	Design	• LED display with TouchControl buttons for programme options and Start/Reload • LED programme progress display
Performance	• 1000rpm spin speed • VarioDrum™ • AntiVibration Design™ • ActiveWater™	Performance	• 400 - 1200rpm variable spin speed • EcoSilence Drive™ • ExpressWash • VarioPerfect™ • AntiVibration Design™ • VarioDrum™ • ActiveWater™
Programmes	• Cottons, Synthetics, Rinse, Spin, Drain, Drum Clean, Wool, Delicate/Silk, Daily Wash, Kids, Super 30'/15' • Options: Extra Rinse, Quick	Programmes	• Cottons, Cottons + Prewash, Synthetics, Daily Wash, Delicates/Silk, Wool, Drum Clean, Spin/Drain, Rinse, Sports Wear, Freshen Up, Shirt/Blouses, Jeans/Dark Laundry, Allergy Plus, SuperQuick 15'/30' • Options: Temperature, Spin Speed, Finished In, SpeedPerfect, EcoPerfect, Easy Iron, Water Plus
Safety	• Multiple Water Protection • Foam detection system to remove excessive foam • Animal Protection Panel at the bottom	Safety	• Multiple Water Protection • Foam detection system to remove excessive foam • Animal Protection Panel at the bottom • Child Lock
Convenience	• Self-cleaning detergent drawer	Convenience	• Self-cleaning detergent drawer • End time delay (24 hrs) • Time remain indicator • Audible end-of-cycle signal
Dimensions	• Product dimensions (H x W x D): 850 x 600 x 600 mm	Dimensions	• Product dimensions (H x W x D): 848 x 598 x 590 mm

WAW28440SG
Series 8
Front Load Washer



A+

WAP28380SG
Series 6
Front Load Washer



Specifications		Specifications	
Capacity	• 8kg Capacity	Capacity	• 9kg Capacity
Design	• LED display with TouchControl buttons for programme options and Start/Reload • LED programme progress display	Design	• LED display with TouchControl buttons for programme options and Start/Reload • LED programme progress display
Performance	• 400 - 1400rpm variable spin speed • EcoSilence Drive™ • VarioPerfect™ • AntiVibration Design™ • VarioDrum™ • ActiveWater™ Plus	Performance	• 400 - 1400 rpm variable spin speed • EcoSilence Drive™ • VarioPerfect™ • AntiVibration Design™ • VarioDrum™ • ActiveWater™
Programmes	• Cottons, + Prewash ; Synthetics, + Prewash ; Mix, Delicate/Silk, Wool, Drain, Rinse/Spin, SuperQuick 15', Allergy Plus, Sportwear, Duvet, Shirts/Blouses • Options: Temperature, Spin Speed, Finished In, SpeedPerfect, EcoPerfect, Easy Iron, Rinse Plus	Programmes	• Cottons, + Prewash ; Synthetics, Mix, Drum Clean, Spin/Drain, Rinse, Wool, Delicate/Silk, Dark Wash, Kids Wear, Hygiene, SuperQuick 15'/30' • Options: Spin Speed, Ready In, SpeedPerfect, EcoPerfect, Extra Water
Safety	• AquaStop™ • Foam detection system to remove excessive foam • Child Lock	Safety	• Multiple Water Protection • Foam detection system to remove excessive foam • Child Lock
Convenience	• Self-cleaning detergent drawer • End time delay (24 hrs) • Time remain indicator • Audible end-of-cycle signal	Convenience	• End time delay (24 hrs) • Time remain indicator • End of cycle indicator
Dimensions	• Product dimensions (H x W x D): 848 x 598 x 590 mm	Dimensions	• Product dimensions (H x W x D): 848 x 598 x 590 mm

WAW28420SG
Series 6
Front Load Washer



Specifications	
Capacity	• 9kg Capacity
Design	• LED display with TouchControl buttons for programme options and Start/Reload • LED programme progress display
Performance	• 400 - 1400rpm variable spin speed • EcoSilence Drive™ • VarioPerfect™ • AntiVibration Design™ • VarioDrum™ • ActiveWater™ Plus
Programmes	• Cottons, Synthetics, Wool, SuperQuick 15'/30', Mix, Night Wash, Rinse, Spin/Drain, Drum Clean, Delicates/Silk, Duvet, Sportswear, Jeans, Shirts/Blouses, AllergyPlus • Options: Temperature, Spin, Finished in, SpeedPerfect, EcoPerfect, Prewash, Easy Iron
Safety	• AquaSecure • Foam detection system to remove excessive foam • Child Lock
Convenience	• Self-cleaning detergent drawer • End time delay (24 hrs) • Time remain indicator • Audible end-of-cycle signal
Dimensions	• Product dimensions (H x W x D): 848 x 598 x 590 mm

WAW28460MY
Series 6
Front Load Washer



Specifications	
Capacity	• 10kg Capacity
Design	• LED display with TouchControl buttons for programme options and Start/Reload • LED programme progress display
Performance	• 400 - 1400rpm variable spin speed • EcoSilence Drive™ • VarioPerfect™ • AntiVibration Design™ • VarioDrum™ • ActiveWater™
Programmes	• Cottons, Daily Wash, Synthetics, Delicates/Silk, Wool, Jeans, Rinse, Spin, Drum Clean, Night Wash, Down Wear, Mix + Pretreatment, AllergyPlus, Outdoor Plus, SuperQuick 15' • Options: Temperature, Spin, Finished in, SpeedPerfect, EcoPerfect, Soaking, Water/Rinse Plus
Safety	• Multiple water protection • Foam detection system to remove excessive foam • Child Lock
Convenience	• End time delay (24 hrs) • Time remain indicator • Audible end-of-cycle signal
Dimensions	• Product dimensions (H x W x D): 848 x 598 x 590 mm

WAW28790IL
Series 8
Front Load Washer



Specifications	
Capacity	• 9kg Capacity
Design	• LED display with TouchControl buttons for programme options and Start/Reload • LED programme progress display • Drum interior light
Performance	• 400 - 1400 rpm variable spin speed • EcoSilence Drive™ • ActiveOxygen™ - removes 99.99% of germs and bacteria at low washing temperature • VarioPerfect™ • AntiVibration Design™ • VarioDrum™ • ActiveWater™ Plus
Programmes	• Cottons, Cottons Eco, Easy-Care, Mix, Delicates/Silk, Wool, Rinse/Spin/Drain, Drum Clean (with reminder), AllergyPlus, Night wash, SuperQuick 15', Sportswear, Shirts/Blouses, ActiveOxygen Refresh • Options: Temperature, Spin Speed, Ready In, ActiveOxygen, SpeedPerfect, EcoPerfect, Easy Iron, Prewash, Water Plus
Safety	• AquaStop™ • Foam detection system to remove excessive foam • Child Lock
Convenience	• Self-cleaning detergent drawer • End time delay (24 hrs) • Time remain indicator • Audible end-of-cycle signal
Dimensions	• Product dimensions (H x W x D): 848 x 598 x 590 mm

WAW32640EU
Series 8
Front Load Washer



Specifications	
Capacity	• 9kg Capacity
Design	• LED display with TouchControl buttons for programme options and Start/Reload • LED programme progress display • Drum interior light
Performance	• 400 - 1600rpm variable spin speed • EcoSilence Drive™ • i-DOS Automatic Dosing System • VarioPerfect™ • AntiVibration Design™ • VarioDrum™ • ActiveWater™ Plus
Programmes	• Cottons, Easy-Care, Mix, Delicate/Silk, Wool, Rinse/Spin, Drain, Drum Clean (with reminder), SuperQuick 15', Allergy Plus, Shirts, Dark Wash, Automatic Soft, Automatic • Options: Temperature, Spin Speed, Finished In, SpeedPerfect, EcoPerfect, Easy Iron, Prewash, Water Plus
Safety	• AquaStop™ • Foam detection system to remove excessive foam • Child Lock
Convenience	• Self-cleaning detergent drawer • End time delay (24 hrs) • Time remain indicator • Audible end-of-cycle signal
Dimensions	• Product dimensions (H x W x D): 848 x 598 x 590 mm

WVG30462SG
Series 6
Front Load Washer / Dryer



WDU28560GB
Series 6
Front Load Washer / Dryer



Specifications	
Capacity	• 8kg Wash / 5kg Dry Capacity
Design	<ul style="list-style-type: none"> • LED display with TouchControl buttons for programme options and Start/Reload • LED programme progress display
Performance	<ul style="list-style-type: none"> • 400 - 1500 rpm variable spin speed • EcoSilence Drive™ • VarioPerfect™ • AntiVibration Design™ • VarioSoft Drum • ActiveWater™ Plus
Programmes	<ul style="list-style-type: none"> • Cottons, + Prewash ; Easy-Care, Mix, Allergy Plus, HygieneCare, Down, Rinse, Spin/Drain, SuperQuick15' / Wash&Dry 60', Wool, Delicate/Silk, Drum Clean, Gentle Dry, Intensive Dry • Options: Temperature, Spin Speed, Finished In, SpeedPerfect, EcoPerfect, Water Plus, Dry
Safety	<ul style="list-style-type: none"> • Multiple Water Protection • Foam detection system to remove excessive foam • Child Lock
Convenience	<ul style="list-style-type: none"> • Self-cleaning detergent drawer • End time delay (24 hrs) • Time remain indicator • Audible end-of-cycle signal
Dimensions	• Product dimensions (H x W x D): 850 x 600 x 590 mm

Specifications	
Capacity	• 10kg Wash / 6kg Dry Capacity
Design	<ul style="list-style-type: none"> • Illuminated ring control for easy programme selection • LED display with DirectSelect Control for programme options and Start/Reload • LED programme progress display • Drum interior light
Performance	<ul style="list-style-type: none"> • 400 - 1400rpm variable spin speed • EcoSilence Drive™ • VarioPerfect™ • AntiVibration Design™ • VarioDrum™ • ActiveWater™ Plus
Programmes	<ul style="list-style-type: none"> • Cottons, Easy-Care, Mixed Load, Delicates/Silk, Wool, Down, Rinse/Spin/Drain, Drum Clean (with reminder), Allergy+, Sportswear, Shirts, MyTime, SuperQuick 15' / Wash&Dry 60', Refresh • Options: Temperature, Spin Speed, Finished In, Hygiene Care, SpeedPerfect, EcoPerfect, Prewash, Rinse plus, Water plus, Easy iron, Wash+Dry, Dry, Cupboard Dry+, Cupboard Dry, Iron Dry, Memory, Silent
Safety & Convenience	<ul style="list-style-type: none"> • Multiple Water Protection • Foam detection system to remove excessive foam • Child Lock
Convenience	<ul style="list-style-type: none"> • Self-cleaning detergent drawer • End time delay (24 hrs) • Time remain indicator • Audible end-of-cycle signal
Dimensions	• Product dimensions (H x W x D): 848 x 598 x 590 mm

WTA74201SG
Series 2
Vented Dryer



WTE84105GB
Series 4
Condenser Dryer



Specifications	
Capacity	• 7kg Capacity
Design	<ul style="list-style-type: none"> • LED display with TouchControl for programme options and Start/Pause • LED programme progress display
Performance	<ul style="list-style-type: none"> • AutoDry sensor drying • Sensitive Drying System • Automatic anti-crease cycle (up to 120 min.) • AntiVibration Design™
Programmes	<ul style="list-style-type: none"> • 15 programmes: Cottons - Very Dry, Cupboard Dry, Iron Dry ; Sportswear, Towels, Mix, Timed program warm, Timed program cold, Delicates, Wool finish, SuperQuick 40', Shirts; Easy Care - Very Dry, Cupboard Dry, Iron Dry • Options: Fine Adjust, Drying Time, Finished in, Less Ironing, Low Heat
Safety & Convenience	<ul style="list-style-type: none"> • LED warning indicator for fluff filter • End time delay (24 hrs) • Time remain indicator • Audible end-of-cycle signal • Child Lock
Technical Information	<ul style="list-style-type: none"> • Annual energy consumption: 504 kWh* • Noise level drying: 65 dB
Accessory	• Optional: WTZ11311 (Stacking kit)
Dimensions	• Product dimensions (H x W x D): 842 x 598 x 601 mm

Specifications	
Capacity	• 7kg Capacity
Design	<ul style="list-style-type: none"> • TouchControl buttons for programme options and Start/Stop • LED indication of program status
Performance	<ul style="list-style-type: none"> • AutoDry sensor drying • Sensitive Drying System • Automatic anti-crease cycle (60 min.) • AntiVibration Design™
Programmes	<ul style="list-style-type: none"> • 9 programmes: Cottons - Extra Dry, Cupboard Dry, Iron Dry ; Timed Programs Warm 20 min, Sportswear, SuperQuick 40' ; Easy Care - Extra Dry, Cupboard Dry, Iron Dry • Options: Low Heat
Safety & Convenience	<ul style="list-style-type: none"> • LED warning indicator for fluff filter and condensed water container • LED indication for end-of-cycle
Technical Information	<ul style="list-style-type: none"> • Annual energy consumption: 504 kWh* • Noise level drying: 66 dB
Accessory	• Optional: WTZ11300 (Stacking kit with pull out shelf)
Dimensions	• Product dimensions (H x W x D): 842 x 598 x 601 mm

*Based on 160 drying cycles of the standard cotton programme at full and partial load, and the consumption of the low-power modes. Actual energy consumption per cycle will depend on how the appliance is used.

WTB86201SG
Series 4
Condenser Dryer



WTR85V00SG
Series 4
Heat Pump Condenser Dryer



A++

Specifications		Specifications	
Capacity	• 8kg Capacity	Capacity	• 8kg Capacity
Design	<ul style="list-style-type: none"> • LED display with TouchControl for programme options and Start/Pause • LED programme progress display • Drum interior light 	Design	<ul style="list-style-type: none"> • LED display with TouchControl buttons for programme options and Start/Pause • LED programme progress display
Performance	<ul style="list-style-type: none"> • AutoDry sensor drying • Sensitive Drying System • Automatic anti-crease cycle (up to 120 min.) • AntiVibration Design™ 	Performance	<ul style="list-style-type: none"> • ActiveAir technology • AutoDry sensor drying • Sensitive Drying System • Automatic anti-crease cycle (60 min.) • AntiVibration Design™
Programmes	<ul style="list-style-type: none"> • 15 programmes: Cottons - Cupboard Extra Dry, Cupboard Dry, Iron Dry; Sportswear, AllergyPlus, Mix, Timed program warm, Timed program cold, Wool Finish, Down, Super 40' min, Super 15'min; Easy Care - Cupboard Extra Dry, Cupboard Dry, Iron Dry • Options: Dryness Adjust, Drying Time, Finished in, Less Ironing, Low Heat 	Programmes	<ul style="list-style-type: none"> • 15 programmes: Cottons - Cupboard Extra Dry, Cupboard Dry, Iron Dry; Sportswear, Towels, Mix, Timed program warm, Timed program cold, Wool Finish, Down Wear, Super Quick 40 min, Shirts/Blouses; Synthetics - Cupboard Extra Dry, Cupboard Dry, Iron Dry • Options: Fine Adjust, Drying Time, Finished In, Easy Iron, Low Heat
Safety & Convenience	<ul style="list-style-type: none"> • LED warning indicator for fluff filter and condensed water container • End time delay (24 hrs) • Time remain indicator • Audible end-of-cycle signal • Child Lock 	Safety & Convenience	<ul style="list-style-type: none"> • LED warning indicator for fluff filter and condensed water container • End time delay (24 hrs) • Time remain indicator • Audible end-of-cycle signal • Child Lock
Technical Information	<ul style="list-style-type: none"> • Annual energy consumption: 560 kWh* • Noise level drying: 65 dB 	Technical Information	<ul style="list-style-type: none"> • Annual energy consumption: 235 kWh* • Noise level drying: 65 dB
Accessory	• Optional: WTZ11400 (Stacking kit with pull out shelf)	Accessory	• Optional: WTZ27400 (Stacking kit with pull out shelf)
Dimensions	• Product dimensions (H x W x D): 842 x 598 x 599 mm	Dimensions	• Product dimensions (H x W x D): 842 x 598 x 599 mm

*Based on 160 drying cycles of the standard cotton programme at full and partial load, and the consumption of the low-power modes. Actual energy consumption per cycle will depend on how the appliance is used.

WTW87561GB
Series 8
Heat Pump Condenser Dryer



A++

Specifications	
Capacity	• 9kg Capacity
Design	<ul style="list-style-type: none"> • LED display with TouchControl for programme options and Start/Pause • LED programme progress display • Drum interior light
Performance	<ul style="list-style-type: none"> • ActiveAir technology • SelfCleaning Condenser™ • AutoDry sensor drying • Sensitive Drying System • Fast Drying • Automatic anti-crease cycle(up to 120 min.) • AntiVibration Design™
Programmes	<ul style="list-style-type: none"> • 14 programmes: Cottons, Easy-Care, Mixed Load, Delicates, Wool Finish, Timed program cold, Timed program warm, Allergy+, Super Quick 40', Towels, Sportswear, Down Wear, Duvet, Shirts • Options: Drying target, Fine adjust, Finished in, End signal, Reduced Ironing 60 min, Reduced Ironing 120 min, Low Heat
Safety & Convenience	<ul style="list-style-type: none"> • LED warning indicator for fluff filter and condensed water container • End time delay (24 hrs) • Time remain indicator • Audible end-of-cycle signal • Child Lock
Technical Information	<ul style="list-style-type: none"> • Annual energy consumption: 259 kWh* • Noise level drying: 64 dB
Accessory	• Optional: WTZ11400 (Stacking kit with pull out shelf)
Dimensions	• Product dimensions (H x W x D): 842 x 598 x 599 mm

*Based on 160 drying cycles of the standard cotton programme at full and partial load, and the consumption of the low-power modes. Actual energy consumption per cycle will depend on how the appliance is used.