



**BOSCH**

Invented for life

# Bosch Refrigeration.

Double the freshness, Double the joy.



# Bosch in every detail.

## Quality comes from experience

For over 125 years, the Bosch name has been synonymous with engineering excellence. Our home appliances are renowned for their quality, reliability and performance which derives from our inherent, unflagging commitment and the painstaking thoroughness with which every unit is made. As you would expect from German engineering, there are no gimmicks or frills with our products – just pure, clean lines and beautiful, functional simplicity that will enhance any kitchen.

The values that shaped Robert Bosch's vision for his new company in 1886 are the same principles that guide the business today: never lose the trust of your customers, look after your staff and partners and change things for the better. It's what has kept Bosch at the forefront of the home appliance industry and what will keep it there in the future.



## Why choose Bosch?



### Another job off the list.

Never worry about having to defrost the freezer again. The **NoFrost** system prevents the build up of ice by automatically initiating the defrost operation as required. This also helps to maintain the appliance's energy efficiency.



### Fresher for longer.

**VitaFresh** helps you store it for much longer. Thanks to its compartments with two different climate zones, it always maintains the right storage conditions for your fresh groceries. In the drawer for vegetables or fruit you can easily set the ideal humidity for long lasting freshness using the slider control. While the other drawer enable protective storage of sensitive food like fresh fish and uncooked meats at low temperature around 0°C - hygienic, dry and without any transfer of odours. This way, **VitaFresh** makes it easier for you to eat healthy every day.



### Extra safe storage at the touch of a button.

Putting away the weekly shop once you get it home can cause fluctuations in temperature and make the rest of the food warmer. Activating the **SuperCool** or **SuperFreeze** function before you go shopping lowers the temperature for a short period so anything new place in the fridge or freezer is chilled or frozen quickly.

# Optimum freshness with Bosch Refrigeration.



## **VariolInverter**

Unlike a conventional compressor that operates consistently at a single speed, the Bosch VariolInverter compressor adjusts its speed efficiently according to the surrounding conditions and refrigerator loads. This helps to optimise the cooling conditions for you to enjoy savings and freshness at the same time.



## **FreshSense**

Thanks to the optimum storage conditions, your food preserves an ideal consistency; ice cream, for instance, is neither too soft nor too hard. A constant temperature in the fridge interior is a decisive factor in achieving more freshness and flavour. FreshSense sensors constantly monitor and control the ambient, fridge and freezer temperature.



## **MultiAirflow**

The MultiAirflow cooling function greatly improves circulation of air around the fridge, regulating temperature and humidity levels and eradicating condensation build-up, so that your food stays fresher for longer.

## **AirFreshFilter**

The AirFreshFilter ensures that odours in the fridge are reduced, and the transfer of food smells is minimised.

## **Economy Mode**

Save at the press of a button to switch to the most economic operating mode. When you activate the Economy function, the fridge automatically adjusts to an economical chilling temperature.

## **Holiday Mode**

Go away with a clear conscience, thanks to the Holiday Mode. When the function is activated, the temperature in the fridge section is approx. +14°C, protecting foods and preventing energy wastage in the huge.

## **BigBox**

This extra large freezer drawer allows you to store bulky frozen goods or stack freezer containers.

## **Safety glass shelves**

The shelves within the fridge are made from toughened safety glass, providing a strong, stable storage shelf within the fridge.

## **Reversible hinging**

Bosch refrigerators offer the added versatility of reversible hinging. This means you can change the opening side of both your freezer and refrigerator.



## Top Freezer



### KDN56VI35N Series 4 Freestanding Top Freezer

#### Design

- Inox - easy clean

#### Performance

- Total net capacity: 474 litres
- Fridge net capacity: 377 litres
- Freezer net capacity: 97 litres

#### Features

- MultiAirflow system
- AirFreshFilter
- VitaFresh ◀0°C▶: fish and meat
- VitaFresh with humidity control: vegetables and fruit
- Super cooling and super freezing
- LED lights in refrigerator area
- Reversible door hinged

#### Technical Information

- Annual energy consumption: 292 kwh
- Storage time in power failure: 15 hours

#### Dimensions

- Product dimensions (H x W x D): 1860 x 700 x 740 mm

## Bottom Freezer



### KGN56XI40 Series 4 Freestanding Bottom Freezer

#### Design

- Inox - easy clean

#### Performance

- Total net capacity: 505 litres
- Fridge net capacity: 400 litres
- Freezer net capacity: 105 litres

#### Features

- VarioInverter
- MultiAirFlow system
- AirFreshFilter with anti bacteria
- VitaFresh ◀0°C▶: fish and meat
- VitaFresh with humidity control: vegetables and fruit
- BigBox
- Economy setting
- Childproof lock
- Super cooling and super freezing

#### Technical Information

- Annual energy consumption: 217 kwh
- Storage time in power failure: 24 hours

#### Dimensions

- Product dimensions (H x W x D): 1930 x 700 x 800 mm

## Side by Side

A<sup>+</sup>



### KAN62V00 Series 4 Freestanding Side by Side

#### Design

- White

#### Performance

- Total net capacity: 604 litres
- Fridge net capacity: 385 litres
- Freezer net capacity: 219 litres

#### Features

- VariolInverter
- 2 cooling and MultiAirFlow system
- 2 fruit and vegetable drawers on telescopic rails
- BigBox
- Childproof lock
- Super cooling and super freezing

#### Technical Information

- Annual energy consumption: 496 kwh
- Storage time in power failure: 16 hours

#### Dimensions

- Product dimensions (H x W x D): 1756 x 910 x 725 mm

A<sup>++</sup>



### KAN92VI35 Series 4 Freestanding Side by Side

#### Design

- Inox - easy clean

#### Performance

- Total net capacity: 604 litres
- Fridge net capacity: 387 litres
- Freezer net capacity: 217 litres

#### Features

- VariolInverter
- 2 cooling and MultiAirFlow system
- 1 VitaFresh with humidity control drawer on telescopic rails
- 1 fruit and vegetable drawers on telescopic rails
- BigBox
- Fresh mode
- Economy setting and Holiday mode
- Childproof lock
- Super cooling and super freezing
- LED lights

#### Technical Information

- Annual energy consumption: 389 kwh
- Storage time in power failure: 12 hours

#### Dimensions

- Product dimensions (H x W x D): 1756 x 912 x 732 mm

A+



#### KAI90VI20G

##### Series 6

Freestanding Side by Side with Ice and Water Dispenser with Water Tank

#### Design

- Inox - easy clean

#### Performance

- Total net capacity: 523 litres
- Fridge net capacity: 360 litres
- Freezer net capacity: 163 litres

#### Features

- VarioInverter
- Water dispenser, crushed ice, ice cube, LED light
- MultiAirFlow system
- 2 fruit and vegetable drawers on telescopic rails
- Childproof lock
- Super cooling and super freezing
- LED lights

#### Technical Information

- Annual energy consumption: 432 kwh
- Storage time in power failure: 4 hours

#### Dimensions

- Product dimensions (H x W x D): 1770 x 910 x 720 mm

## Built-in Fridge



#### KIS87AF30T

##### Series 6

Built-in Bottom Freezer

#### Performance

- Total net capacity: 271 litres
- Fridge net capacity: 210 litres
- Freezer net capacity: 61 litres

#### Features

- 2 cooling system with FreshSense
- VitaFresh Plus with humidity control - protects vegetables and fruits from moisture loss due to its special sealing, optimum humidity is always kept inside the drawer
- BigBox
- Holiday mode
- Super cooling and super freezing
- LED lights in refrigerator area
- Reversible door hinged

#### Technical Information

- Annual energy consumption: 356 kwh
- Storage time in power failure: 26 hours
- Low frost

#### Dimensions

- Product dimensions (H x W x D): 1772 x 558 x 545 mm
- Cut out dimensions (H x W x D): 1775 x 560 x 550 mm

## Wine Cooler

B



### KSW38940 Series 8 Freestanding Wine Cooler

#### Design

- Aluminium

#### Performance

- Total net capacity: 368 litres
- Max 0.75 litres bottle storage: 197 bottles

#### Features

- 6 height adjustable wooden grid shelves
- Carbon filter
- Double glazed door with UV protected tinted glass
- Digital temperature controls
- LED lights (manual switch)
- Reversible door hinged

#### Technical Information

- Annual energy consumption: 212 kwh

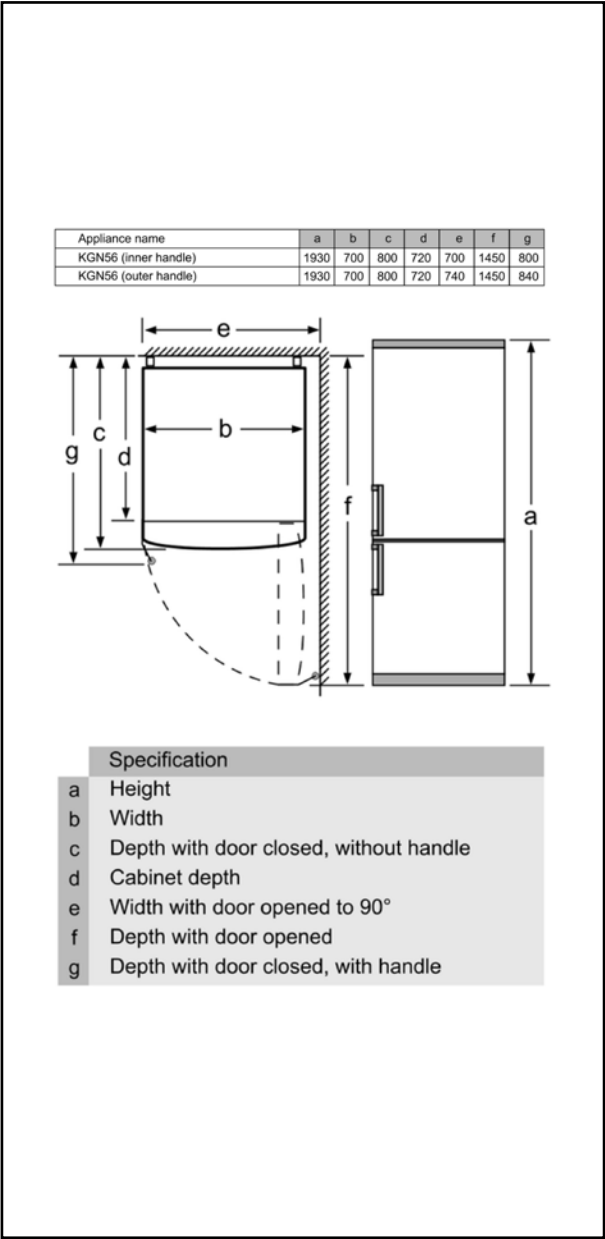
#### Dimensions

- Product dimensions (H x W x D): 1860 x 595 x 600 mm



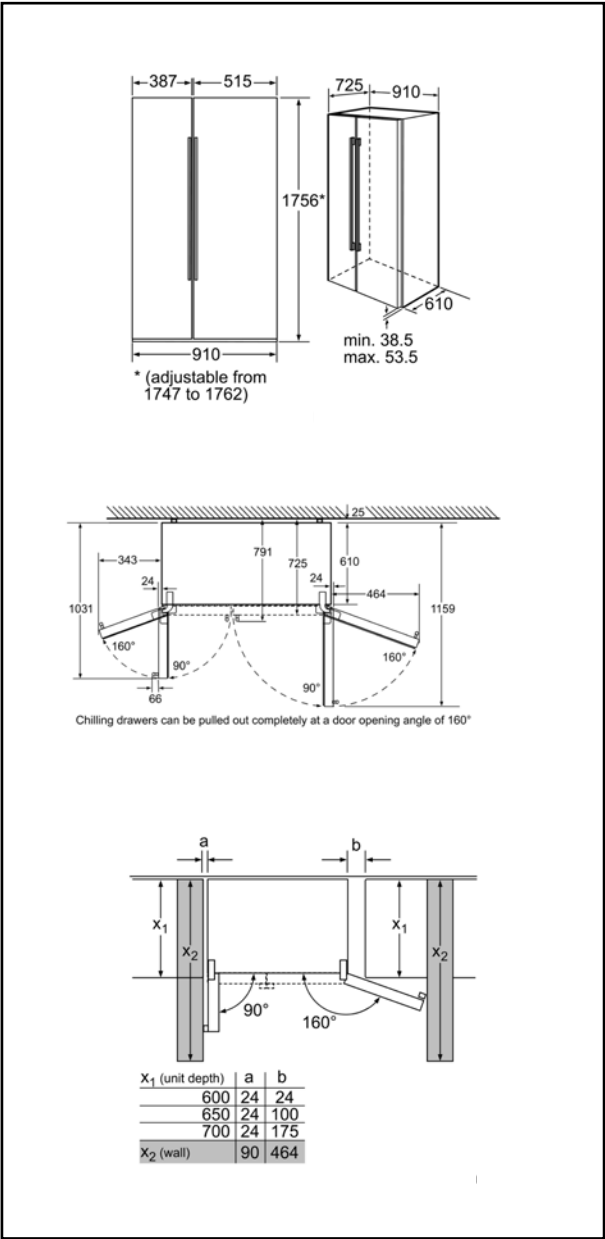
# Refrigeration

## Technical Drawings



KGN56XI40

Measurements in mm



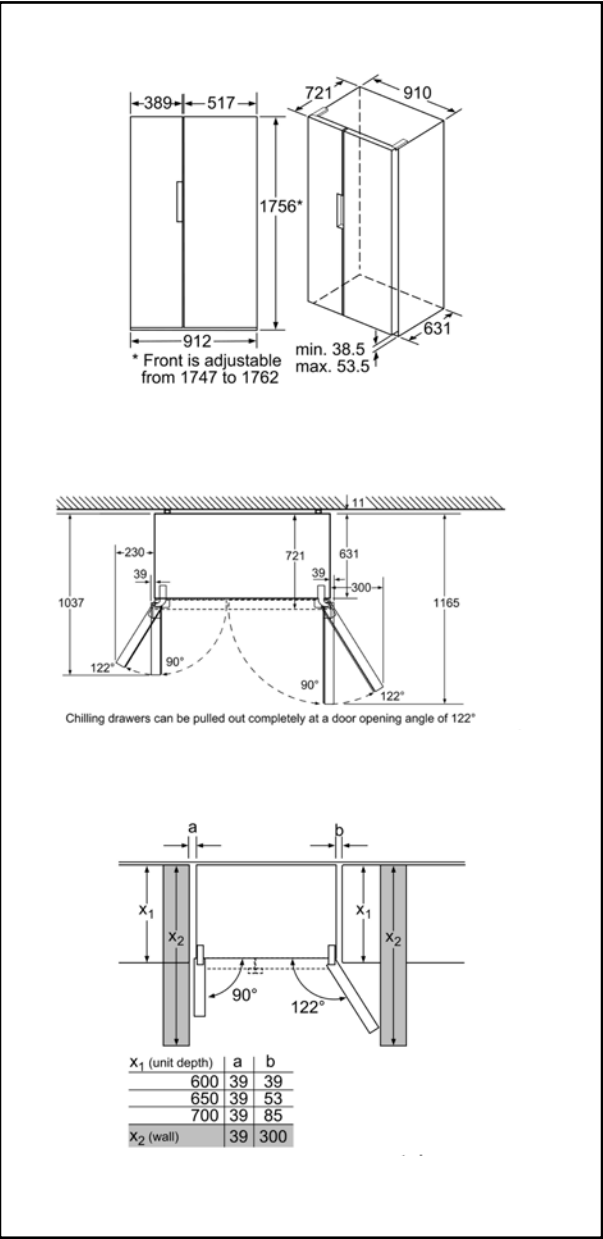
KAN62V00

Measurements in mm



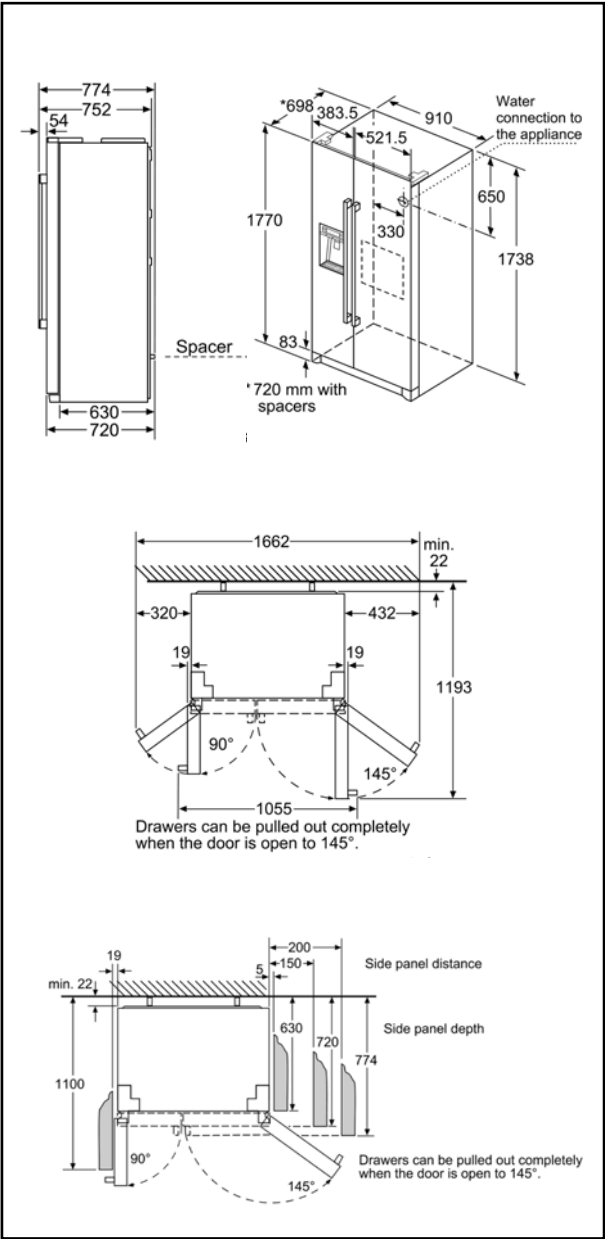
# Refrigeration

## Technical Drawings



KAN92VI35

Measurements in mm

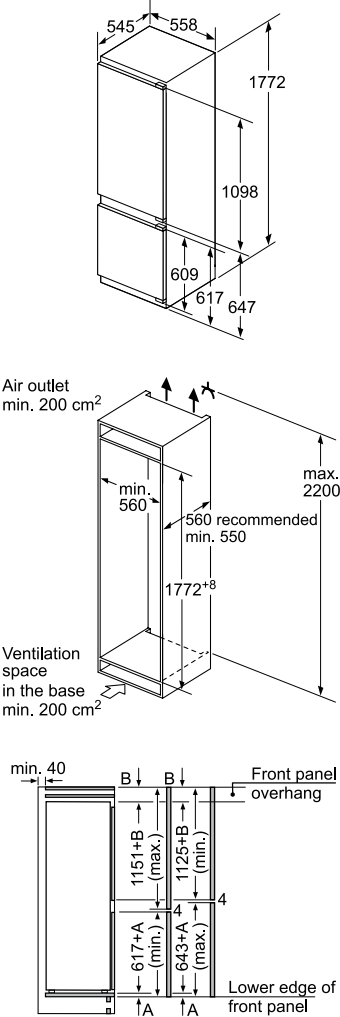


KAI90VI20G

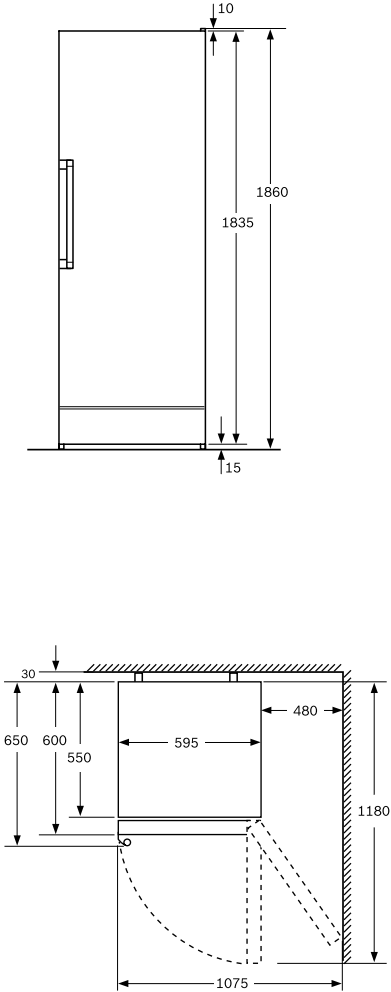
Measurements in mm

# Refrigeration

## Technical Drawings



The specified unit door dimensions are valid for a door gap of 4 mm.





my  
Bosch

#### WEBSITE

 | [www.bosch-home.com.my](http://www.bosch-home.com.my)

More privileges when you  
register as myBosch member

#### FOR MORE INFORMATION

##### CUSTOMER SERVICE

 | +603 7950 9338  
 | +603 7955 5103  
 | [bshpet.service@bshg.com](mailto:bshpet.service@bshg.com)

Whilst every care has been taken in the preparation of this publication, Bosch does not warrant the accuracy or completeness of the information in this publication and Bosch reserves the right to alter specifications without notice. To the extent permitted by law, Bosch excluded all liability, including negligence, for any loss incurred in reliance on the contents of this publication.