



BOSCH

Register your
new device on
MyBosch now and
get free benefits:
**[bosch-home.com/
welcome](https://bosch-home.com/welcome)**



Semi-Automatic Top-loader Washing machine

en

Instruction Manual and Installation Instructions

Your new washing machine

You have chosen a Bosch washing machine.

Please take a few minutes to read and become familiar with the advantages of your washing machine.

To meet the high quality demands required by Bosch, every washing machine that leaves our factory is carefully checked to ensure that it functions correctly and is in perfect condition.

For more information on our products, accessories, replacement parts and services, see our website www.bosch-home.com or contact our after-sales service centres.

If the operating and installation instructions describe different models, any differences will be pointed out at the relevant points in the text.



Read these operating and installation instructions before switching on the washing machine.

Display rules

Warning!

This combination of symbol and signal word indicates a possibly dangerous situation. Not heeding the warning can cause death or injuries.

Caution!

This signal word indicates a possibly dangerous situation. Not heeding the caution can cause property and/or environmental damage.

Note/tip

Information about the optimum use of the appliance/any other useful information.

1. 2. 3. / a) b) c)

The steps are represented by numbers or letters.

■ / -

Lists are represented by a small box or a dash.

Contents

	Installing and connecting the appliance 4		Technical data 27
	Safety Instructions..... 3		Warranty terms and conditions 28
	Features 8		Environmental Protection 31
	Scope of delivery 9		Customer Service 31
	Installing and connecting the appliance 11		
	Installation surface 11		
	Connecting the appliance 12		
	Hose and pipe lengths..... 13		
	Connecting the inlet hose... .. 13		
	Connecting the drain hose 13		
	Before using the appliance first time. 14		
	Familiarising yourself with your appliance 15		
	Appliance overview 15		
	Fascia 15		
	Programme overview* 17		
	Laundry 19		
	Preparing laundry 19		
	Operating the appliance 20		
	Wash Procedure 20		
	Rinsing... .. 21		
	Spin Rinse.... .. 21		
	Spin procedure 22		
	Removing laundry and switching off the appliance 23		
	Cleaning and maintenance 24		
	Cleaning the lint filter 25		
	What to do in the event of a fault 26		
	Help with the appliance 26		

Safety Instructions

Observe the following safety instructions.

1.1 General information



- Read this instruction manual carefully.
- Keep the instruction manual and the product information safe for future reference or for the next owner.
- Do not connect the appliance if it has been damaged in transit.

1.2 Intended use

Only use this appliance:

- For washing machine - washable fabrics and hand washable wool in accordance with care label.
- With tap water and commercially available detergents and care products suitable for washing machines.
- In private households and in enclosed spaces in a domestic environment.
- Up to an altitude of max. 2000 m above sea level.

1.3 Restriction on user group

This appliance may be used by children aged 8 or over and by people who have reduced physical, sensory or mental abilities or inadequate experience and/or knowledge, provided that they are supervised or have been instructed on how to use the appliance safely and have understood the resulting dangers. Do not let children play with the appliance. Cleaning and user maintenance must not be performed by children unless they are being supervised. Keep children under the age of 3 years and pets away from the appliance. There is a risk that they could accidentally fall into the washing tub.

1.4 Safe installation



WARNING – Risk of electric shock!

Incorrect installation is dangerous.

- Connect and operate the appliance only in accordance with the specifications on the rating plate.
- Connect the appliance to a power supply with alternating current only via a properly installed socket with earthing.
- The protective conductor system of the domestic electrical installation must be properly installed. The installation must have a sufficiently large cross section.
- Do not re use the hoses that have been used before.

- When using a residual current circuit breaker, only use a type with the ISI mark.
- Never equip the appliance with an external switching device.
- When the appliance is installed, the mains plug of the power cord must be freely accessible. If free access is not possible, an all-pole isolating switch must be installed in the permanent electrical installation according to the installation regulations.
- When installing the appliance, check that the power cable is not trapped or damaged.

If the insulation of the power cord is damaged, this is dangerous.

- Never let the power cord come into contact with hot appliance parts or heat sources.
- Never let the power cord come into contact with sharp points or edges.
- Never kink, crush or modify the power cord.



WARNING – Risk of fire!

It is dangerous to use an extended power cord and non-approved adapters.

- Do not use extension cables or multiple socket strips.
- Only use adapters and power cords approved by the manufacturer.
- If the power cord is too short and a longer one is not available, please contact an electrician to have the domestic installation adapted.



WARNING – Risk of suffocation!

Children may put packaging material over their heads or wrap themselves up in it and suffocate.

- Keep packaging material away from children.
- Do not let children play with packaging material.



WARNING – Risk of suffocation!

Children may breathe in or swallow small parts, causing them to suffocate.

- Keep small parts away from children.
- Do not let children play with small parts.

1.5 Safe use



WARNING – Risk of electric shock!

If the appliance or the power cord is damaged, this is dangerous.

- Never operate a damaged appliance.
- Never pull on the power cord to unplug appliance. Always unplug the appliance at the mains.
- If the appliance or the power cord is damaged, immediately unplug the power cord or switch off the fuse in the fuse box and turn off the water tap.
Call customer services. → Page 28.

- If the power cord of this appliance is damaged it must be replaced by the manufacturer, the manufacturer customer service or similar qualified person in order to prevent any risk.
- An ingress of moisture can cause an electric shock.
- Only use the appliance in enclosed spaces.
- Never expose the appliance to intense heat or humidity.
- Do not use steam or high pressure cleaners, hoses or sprays to clean the appliance.

WARNING – Risk of poisoning!

Detergents and care products may result in poisoning if consumed.

- If accidentally swallowed, seek medical advice.
- Keep detergents and care products out of the reach of children.

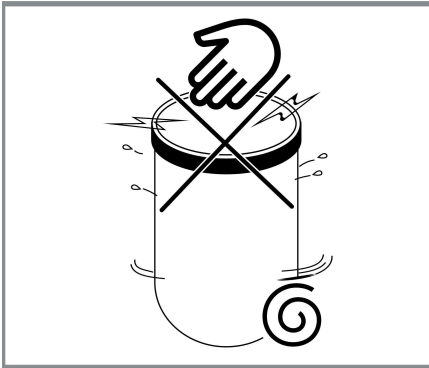
WARNING – Risk of explosion!

Laundry that has been pretreated with cleaning agents that contain solvents may cause an explosion in the appliance.

- Rinse pretreated laundry thoroughly with water before washing.

CAUTION – Risk of injury!

- Do not insert your hands into the spin basket while it is in operation. It can entangle your fingers and result in injury.
- Wait for the drum to come to a complete stop before reaching inside.

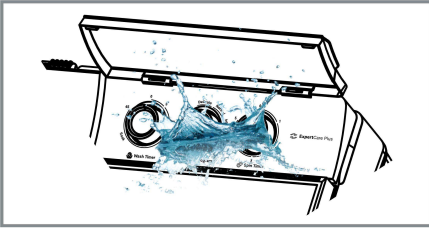


Preventing material damage

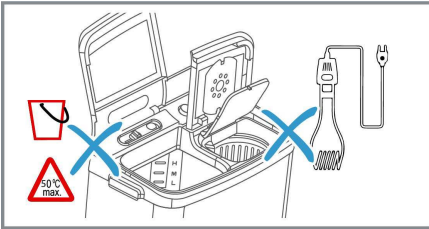
- Ensure that you place the safety cover over the laundry before spinning to prevent clothes from being thrown out and causing damage.
- To prevent water splashing, make sure to shut the lid of the wash tub.
- Do not attempt to pull off the knobs, as they cannot be removed from the outside of the panel.

⚠ Precaution – Appliance damage!

- Ensure that water doesn't come into contact with the control panel.

**⚠ Precaution – Appliance damage!**

- Do not put immersion rod/water heater rod inside the washing machine.
- Avoid using hot water over 50°C, it can deform plastic parts and can cause malfunction.

**⚠ Caution – Appliance damage!**

- Avoid hanging clothes, whether dry or wet, on the washing machine lid.
- Prevent children from playing or leaning on the washing machine lid as it might break.

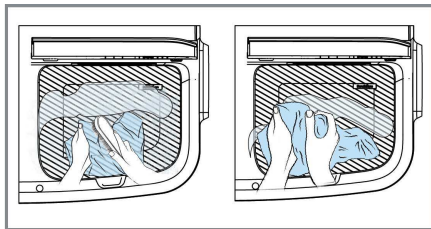


Features

▪ Scrub Zone

* Depends on the model

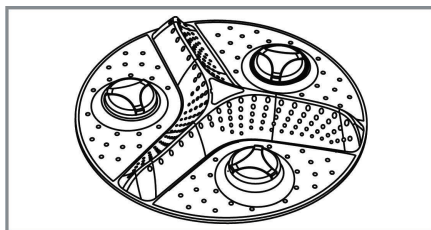
The generously-sized scrub basin, offering the largest surface area, enables convenient pre-treatment of even the bulkiest fabrics right at the machine and at a comfortable working height.



▪ Cam Pulsator

* Depends on the model

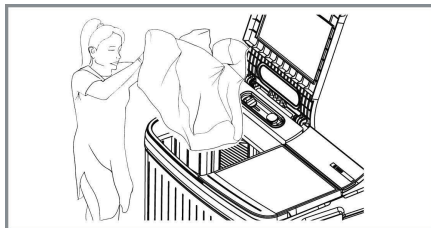
Asymmetric paddle design which mimics effects of a hand-wash with cam pulsators which move up and down to create a pounding effect



▪ Large wash tub opening

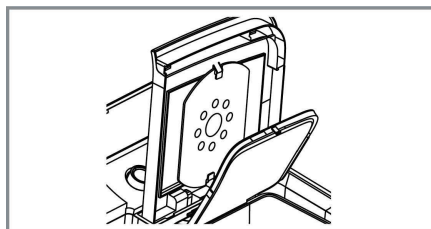
* Depends on the model

Design provides larger opening to the wash tub for loading & un-loading of clothes.



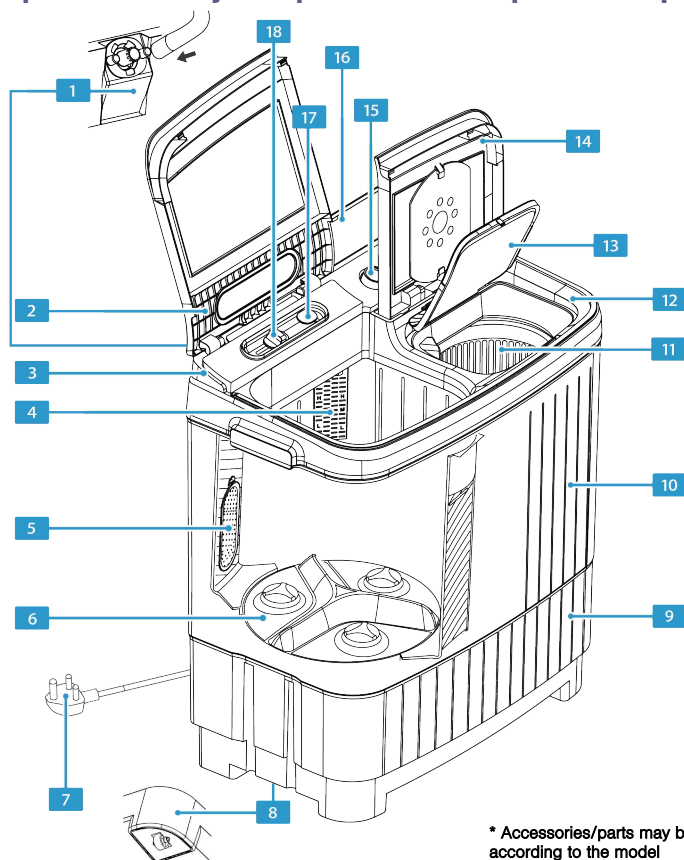
▪ Spin Drum safety Cover holder

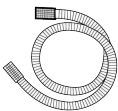
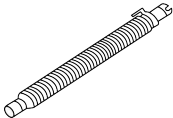

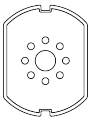
Now you can conveniently store and use the safety disc without misplacing or forgetting.



Installing and connecting the appliance

Scope of delivery - Expert care & Expert Care plus



Accessories
Inlet Hose

Drain Hose

Drain hose clamp

Safety Cover


* Accessories/parts may be different according to the model

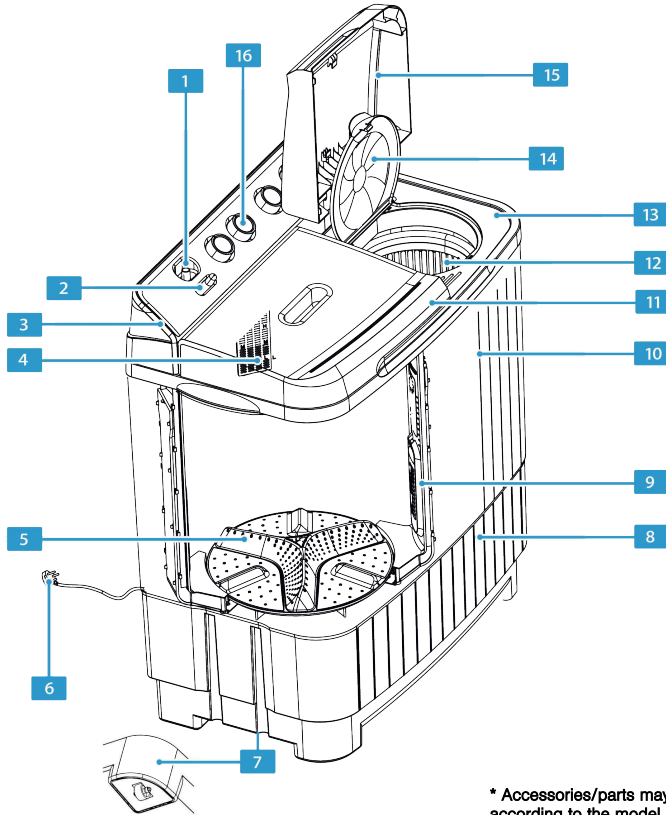
1	Inlet spout
2	Wash lid glass/plastic
3	Control panel
4	Water level indicator
5	Lint filter
6	Impeller
7	Power cord
8	Wheels (wash side)
9	Base

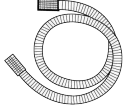
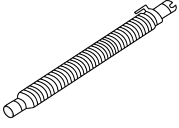

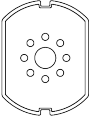
10	Tub
11	Spin basket
12	Control table
13	Inner spin lid
14	Spin lid glass/plastic
15	Knob
16	Control panel cover
17	Drain flap/knob
18	Water selector



Installing and connecting the appliance

Scope of delivery - Model with 4 knobs



Accessories	
Inlet Hose	
Drain Hose	
Drain hose clamp	
Safety Cover	

* Accessories/parts may be different according to the model

- | | |
|---|-----------------------|
| 1 | Inlet spout |
| 2 | Water selector |
| 3 | Control panel |
| 4 | Water level indicator |
| 5 | Impeller |
| 6 | Power cord |
| 7 | Wheels (wash side) |
| 8 | Base |

- | | |
|----|----------------|
| 9 | Lint filter |
| 10 | Tub |
| 11 | Wash lid |
| 12 | Spin basker |
| 13 | Control table |
| 14 | Inner spin lid |
| 15 | Spin lid |
| 16 | Knob |



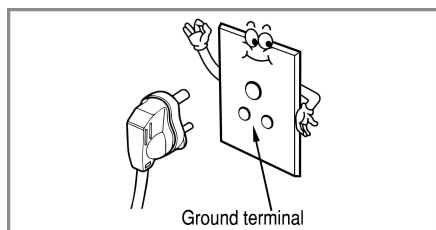
Safe Installation and connecting the appliance

1. Remove any packaging and protective covers completely from the appliance.
2. Remove the appliance from the base padding.

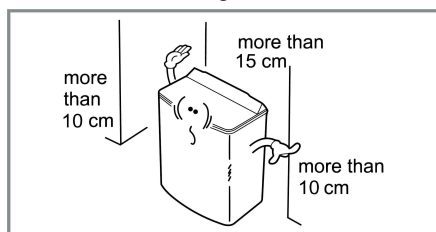
Note: Operating the appliance on the base padding is strictly forbidden.

3. Open the lid on the appliance and take out the cover and all the accessories.

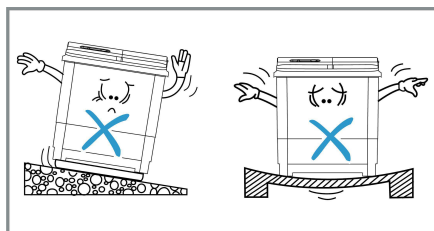
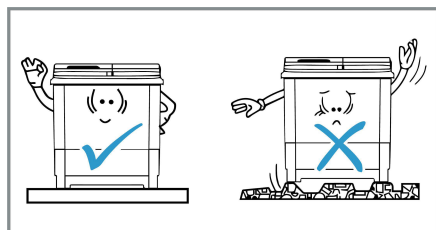
You can now install and connect the appliance.



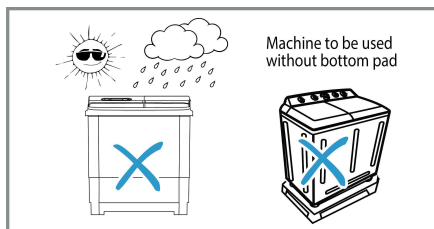
4. Leave at least 15cm between wall and the washing machine.



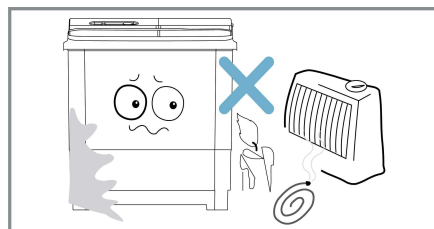
5. Noise and vibration may occur if washing machine is placed on uneven surface.



6. Avoid placing the washing machine in areas with high humidity, direct sunlight, or where it might be exposed to rain.



7. Avoid positioning the washing machine in close proximity to heat sources such as heaters and boilers, as direct heat can adversely affect the plastic and electrical components.



Caution! Risk of material damage and damage to the appliance

Objects remaining in the drum that are not designed for operation with the appliance may result in material damage and damage to the appliance. Remove these objects, along with all accessories, from the drum.

Installing the appliance



Warning **Risk of injury!**

- The appliance is very heavy. Lifting it may result in injury.
Do not lift the appliance on your own.
- The appliance has sharp edges on which you could cut your hands.
Do not take hold of the appliance by its sharp edges. Wear protective gloves to lift it.
- If the hoses and mains cables are not correctly routed, they may constitute a tripping hazard, which may result in injury.
Route hoses and cables such that they do not constitute a tripping hazard.

Installation surface

Caution!

Damage to the appliance

Frozen hoses may rupture or burst.
Do not install the appliance outdoors or in areas that may be exposed to frost.

Note: The appliance must be stable so that it does not "wander".

- The installation surface must be firm and level.
- Soft floors/floor coverings are not suitable.
- All four of the appliance's feet must stand firmly on the ground.

Connecting the appliance

Caution!

Risk of material damage and damage to the appliance

If the water pressure is too high or too low, the appliance may not be able to operate properly, and this may also result in material damage or damage to the appliance.

Ensure that the water pressure in the water supply facility does not exceed 140 kPa (1.4 bar).

Caution!

Material damage/damage to the appliance

If the water hoses are altered or damaged, this may result in material damage or damage to the appliance.
The water hoses must not be kinked, crushed, altered or severed.

Caution!

Material damage/damage to the appliance

The use of hoses supplied by other brands to connect to the water supply may result in material damage or damage to the appliance.

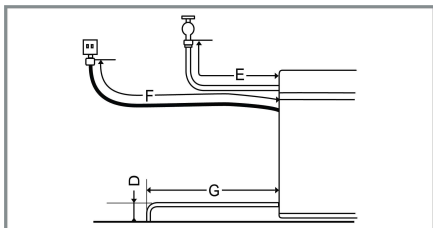
Use the hoses supplied with the appliance or genuine spare part hoses only.

Notes

- In addition to the information listed here, the local water and electricity supplier may have special requirements.
- If in doubt, have your appliance connected by a professional.

Hose and pipe lengths

■ Connecting

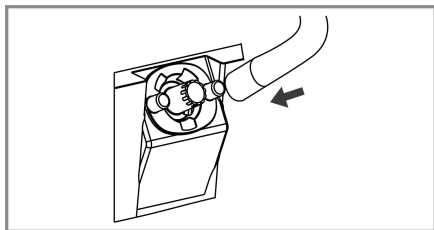


- D Max. 15 cm
- E 80 cm or 120 cm**
- F Max. 200 cm**
- G Max. 85 cm

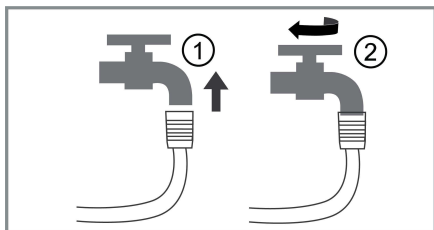
** Depending on Inlet Pipe Length supplied with the appliance.

Connect the water Inlet hose as follows:

1. Insert the inlet hose to the washing machine.



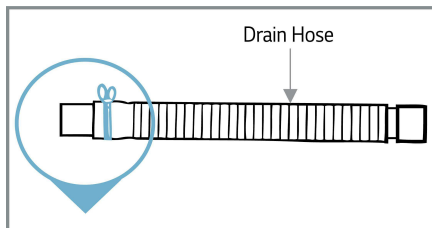
2. Insert the inlet hose to the tap.



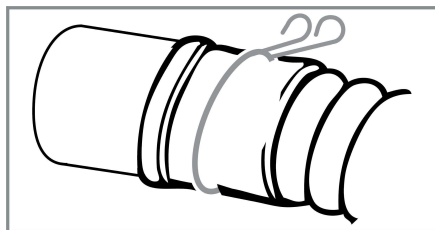
Notes

- Use the hoses set supplied with the machine, refrain from reusing the previous hoses.
- Only operate the appliance using mains water.
- Ensure that the tap's opening is smooth and even.

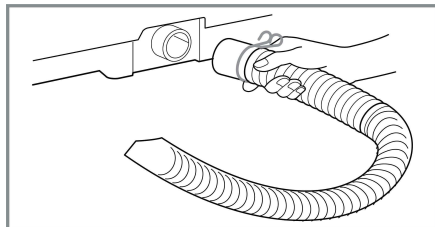
Connect the water drain hose as follows:



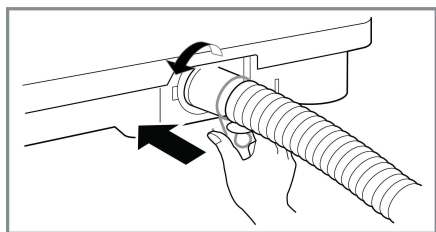
1. Fix the drain hose clamp to the drain hose.



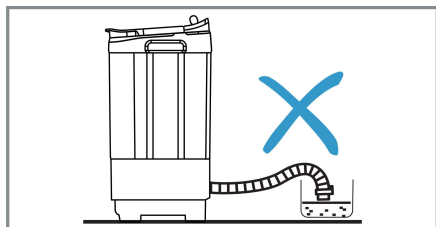
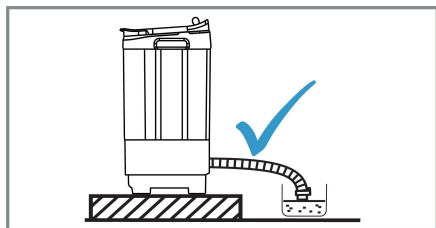
2. Position the drain hose in line with the drain outlet.



3. Push the hose toward the washing machine's body and release the drain hose clamp.



4. Second end of the water drain hose to be properly laid to a floor drain.



Water outlet

Caution! Water damage

When water is being drained away, the drain hose is under high water pressure and may slip out of the connection point. Secure the outlet hose so that it cannot slip out.

Caution! Damage to the appliance/fabrics

If the end of the outlet hose is immersed in the drained water, water may not be drained properly. Make sure that:

- The end of the drain hose is not immersed in the drained water,
- The water drains away quickly enough.

Before using the appliance for the first time

Before you switch on the appliance:

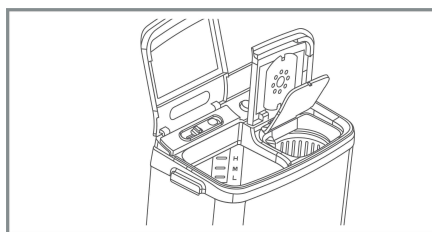
Check that there is no visible damage to the appliance. Do not operate the appliance if it is damaged. Should you have any problems, please contact your specialist dealer or our after-sales service.

Your appliance has been thoroughly tested before leaving the factory. To remove any water that may be left over from testing, run the first wash cycle **without** any laundry.

Run a program without laundry as follows:

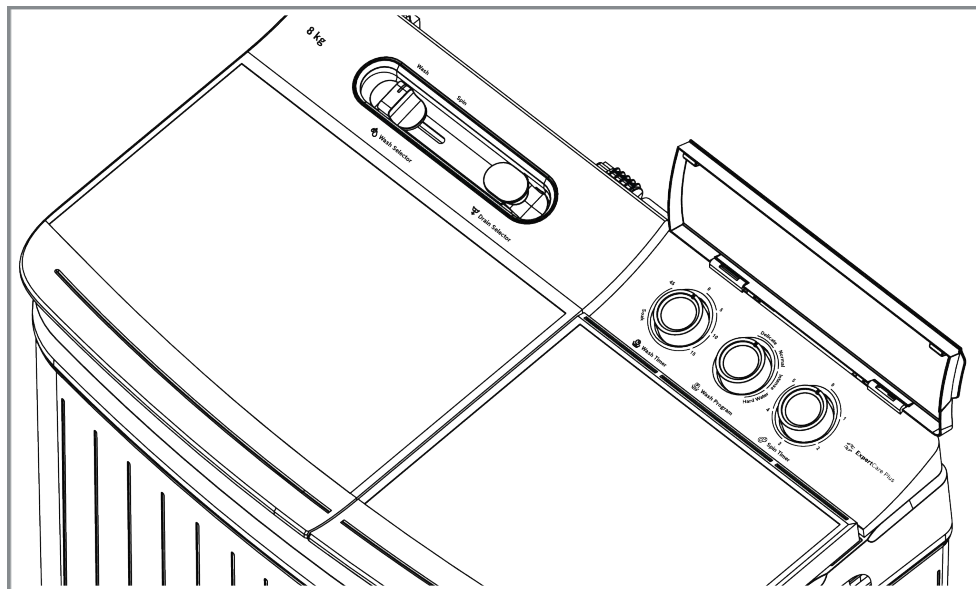
1. Insert the inlet hose to the washing machine and other end to the tap.
2. Ensure that the drain flap is closed.
3. Set the Water selector knob to the wash.
4. Set the Wash timer for the 2 minutes.
5. After the cycle finishes, open the drain flap to allow the water to drain.

Follow the same procedure for spin tub.



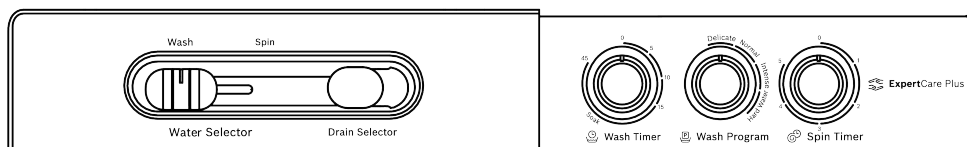
Familiarizing yourself with your appliance

Appliance overview

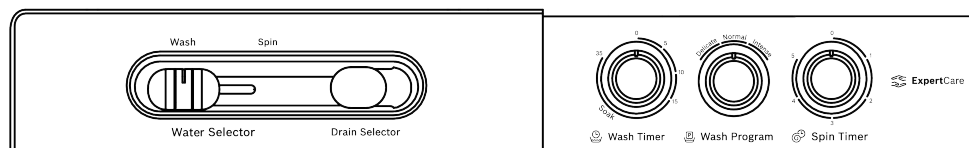


Fascia

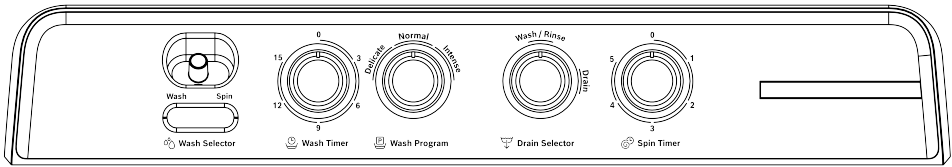
Expert-Care Plus:



Expert-Care



Model with 4 knobs



- 1 **Water Selector**
To adjust the water between wash tub and spin drum.
- 2 **Drain Selector (Flap/Knob) *** Depend on the model
Water used during washing to flow out from the machine's tub.
- 3 **Wash Programme**
To set a program according the laundry. → *Page 17*
- 4 **Wash Timer**
To start and to control the duration/timing of wash cycle.
* 0 - 15, 0 - 35, 0 - 45 Minutes.
Depending upon your appliance specification.
- 5 **Spin Timer**
To start and to control the duration/timing of the spinning cycle.
* 0 - 5, 0 - 10 Minutes.
Depending upon your appliance specification.

Programme overview*

*Programs will vary based on the models.

Refer the user interface in the machine for available programs.

Program/type of laundry/information	Washing time	Load size
Name of programme Brief explanation of the program and the items for which it is suitable.	In Minutes	Recommended load (in relation to the maximum load → <i>Page 27</i>)
Normal Daily clothes made of cotton, linen or blended fabrics. Suitable for mix of different fabric types and colors.	8 to 10	Up-to full load
Delicates (*Energy label programme) For delicate washable items, e.g. made of satin, synthetic fibers or blended fabrics. Note: This program is not meant for silk sarees and silk clothes.	2 to 7	1/2 load
Intense Suitable for heavily soiled laundry, bigger loads like curtains, bedsheets, liners, etc.	10 to 15	Up-to full load
Hard Water Wash Hard water wash programme alters the washing programme to give improved washing performance in the areas with hard water supply	10 to 15	Up-to full load
Soak Function (optional) * Depending on the model When the WASH TIMER is adjusted beyond 15 minutes the washing machine will initiate the soak function. After the soaking phase is finished, the washing cycle will start for 15 mins. If needed, the soak function may be repeated before the wash cycle start.		

* To meet the energy label consumption standards, the spin timer needs to be adjusted to 3 - 4 minutes with the energy label wash program.

Spin time

Type of laundry	Time
Thin (Synthetic fiber)	1 min
Wool	1 to 2 min
Cotton	3 to 5 min
Heavy clothes	5 to 10 min

Detergent Dosage

Please refer to the usage instructions printed on the packaging of the detergent. Tailor the detergent quantity according to the type of fabric and soil level as indicated on the detergent packaging.

Notes

- Do not mix different detergents.



Laundry

Preparing laundry

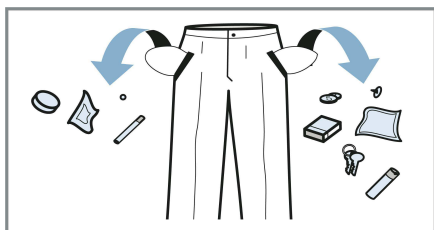
Caution!

Damage to the laundry

Leaving objects in the pockets of your clothing can cause damage to the drum and laundry when the appliance is in operation. Remove all objects (e.g. metal items) from clothing pockets.

Prepare the laundry as follows:

- Empty pockets.



- Tie cloth belts, apron strings, etc. together. For small, extremely small items of laundry, such as socks and stockings, use a laundry bag.
- Always wash small and large items of laundry together.
- Close any zips, Velcro, hooks, loops or buttons.
- Brush sand out of pockets and collars.
- Remove curtain fittings or place curtains in a laundry bag.
- Pre-treat stains while they are fresh. First, dab stains with soapy water without rubbing them.

Note: Stubborn or dried-in stains can sometimes only be removed by washing several times.

Sorting laundry

Sort your laundry according to the care instructions and the manufacturer's information on the care labels, using the following criteria:

- **Type of fabric/fibre**

- **Colour:**





Wash white and coloured laundry separately. Wash new coloured items on their own the first time you wash them.

- **Soiling:**

Wash laundry with the same level of soiling together.

- **Care labels:**

Check the symbols on the cloth tags and choose the recommended program as instructed below:

-  Suitable for a normal washing process, e.g. the Normal program.
-  A gentle washing process is required, e.g. the Delicates/Soft program.
-  A particularly gentle washing process is required, e.g. the Delicates/Soft program.
-  Do not machine wash.

Placing the laundry into the tub

Note: If you overload the appliance, it will not be able to wash the laundry as effectively and the laundry is more likely to crease.

1. Prepare and sort the laundry.
2. Open the lid. Check that the drum is completely empty. Empty it if necessary.
3. Placing the laundry into the drum is important for best performances.
 - Ensure that the clothes are loaded/dropped loosely inside the tub.
 - Ensure that the clothes are evenly loaded without stuffing it.
 - Ensure that towels/lint generator clothes are washed separately.
 - Water level need to check visually (low, medium and high).
4. Close the lid.



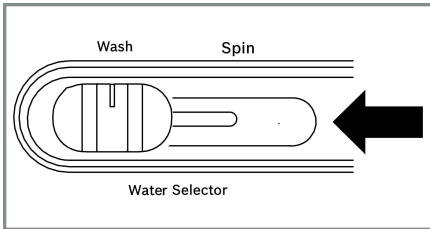
Operating the appliance

Switching on the appliance and setting a programme

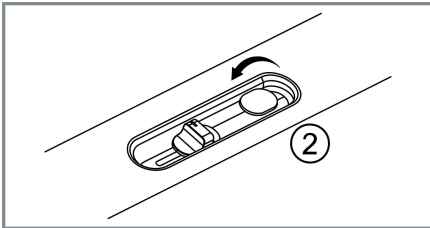
Note: The appliance must be correctly installed and connected. → *Page 11*

Washing

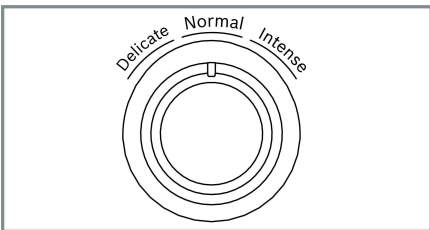
1. Set the water selector knob to the "wash" position.



2. Ensure that drain flap is closed.

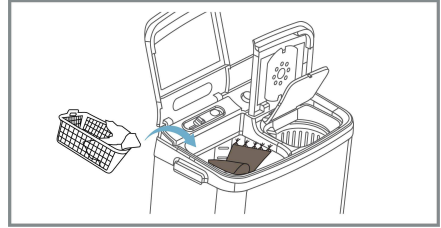


3. Select the desired programme by rotating the wash selector knob.

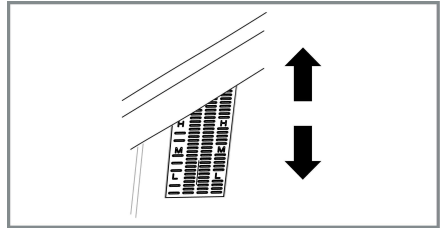


- * Hard water wash, depending upon on your appliance specification.

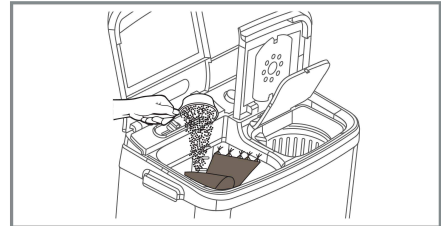
4. Load the laundry in the wash tub.



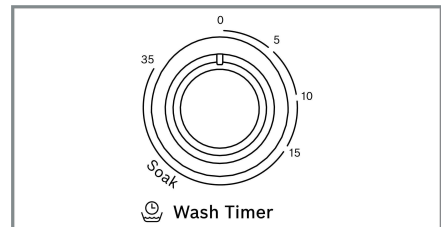
5. Add water to the wash tub at the levels indicated as low, medium, and high in the tub.



6. Add the detergent.



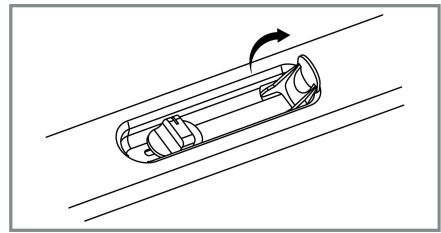
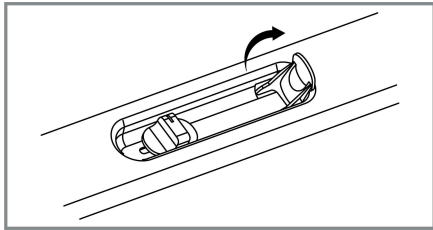
7. Set the wash timer.



- * 0 - 15, 0 - 35, 0 - 45 Minutes. Depending upon your appliance specification. Set the wash timer 1 - 15 minutes.
- ** Beyond 15 minutes machine will activate the soak function *Page - 17*.

en Operating the appliance

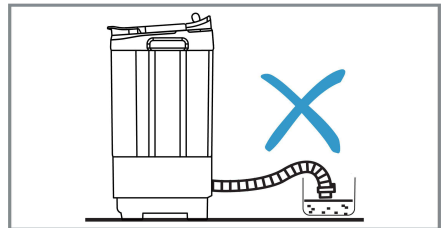
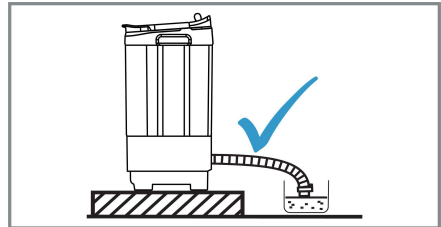
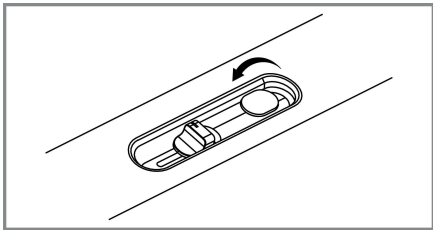
8. Once the washing cycle has finished, proceed to open the drain flap in order to drain the water.



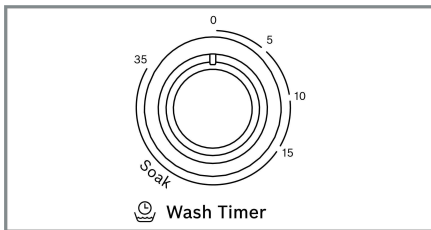
5. Repeat the cycle until the drain water is clean.
6. Be sure lay the drain hose down.

Rinsing

1. Ensure that drain is closed.



2. Fill adequate amount of water to prevent it from overflowing the top of the washing tub.
3. Set the wash timer for 2 - 3 minutes.



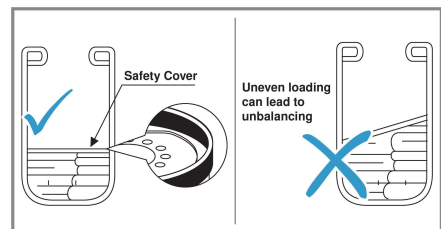
- * 0 - 15, 0 - 35, 0 - 45 Minutes.
Depending upon your appliance specification.

4. Open the drain flap.

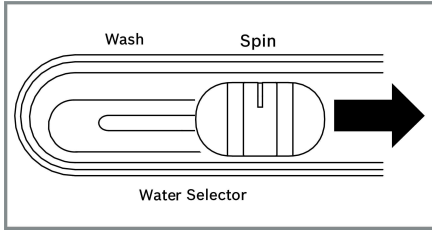
Spin rinse

Following the initial rinse, you have the option to choose this option for a more effective rinsing process. (Please note that it is not recommended to use only this option for rinsing.)

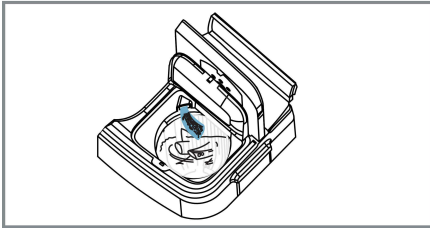
1. Evenly distribute the laundry within the spin basket.



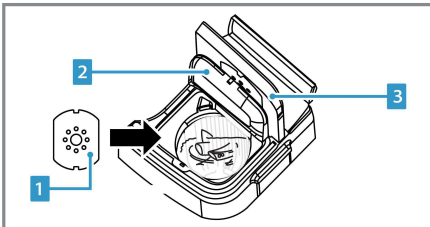
2. Adjust the WATER SELECTOR knob to the Spin.



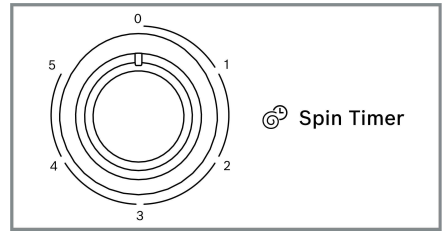
3. Provide water for one minute and adjust the water flow to avoid overflowed / leaked from the washing tub.



4. Once you've stopped the water supply, place a safety cover over the laundry and securely close the inner lid.

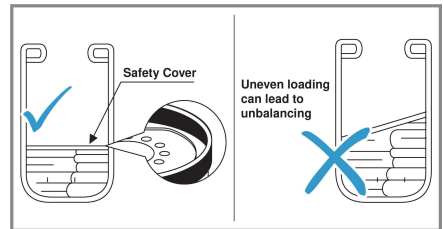


- 1 Safety cover
- 2 Inner spin lid
- 3 Spin lid

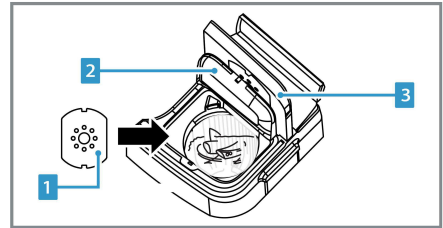


Spinning Dry

1. Move the clothes into the spin basket and ensure they are evenly arranged.



2. Make sure to affix the safety cover and shut the inner lid securely.

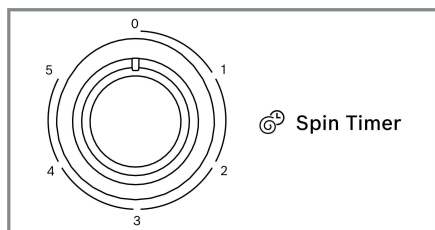


- 1 Safety cover
- 2 Inner spin lid
- 3 Spin lid

3. Close the spin lid.
4. Adjust the spin timer to the desired duration.

5. Close the spin lid.
6. Set the Spin timer to the desired duration.

en Operating the appliance



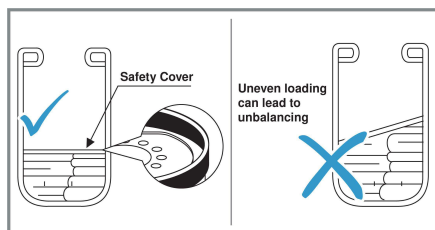
5. If there is incomplete spinning, characterized by severe vibrations or imbalance, refer to the "How to load..." instructions for guidance.

Note: During Spin rinse, if water comes to wash tub, then reduce the water flow.

- Do not overload the spin drum. Ensure that no part of the laundry is exposed outside the drum.

How to load the laundry into the spin basket.

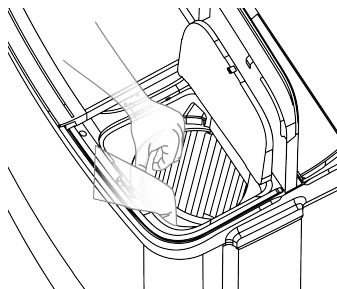
Press the laundry down evenly and place the safety cover inside the spin drum, following the illustrations provided below.



To pick out the clothing which has fallen between the basket and tub.

For safety, Disconnect the appliance's mains plug from the power supply.

- Gently try to tilt the spin tub to the one side and take the laundry.

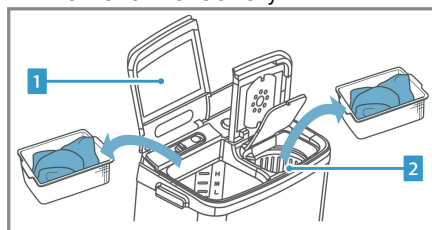


End of cycle

After the washing cycle concludes with a buzzer sounding for approximately 20 seconds, remember to switch off the appliance after the spin dry operation and remove the main plug from the socket.

Removing laundry and switching off the appliance

1. Remove the laundry.

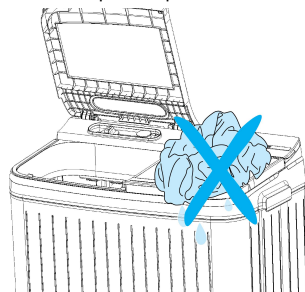


1 Wash drum

2 Spin tub / remove safety cover

Notes

- Leave the lid open so that residual water can evaporate
- Don't keep wet laundry or any wet items on top of spin lid.





Cleaning and maintenance

Cleaning/Maintenance



Warning

There is a risk of electric shock if you come in to contact with live components while the appliance is electrically powered.

Therefore please note:

- Switch off the appliance. Disconnect the appliance from the power supply (pull out the plug).
- Never take hold of the mains plug with wet hands.
- When removing the mains plug from the socket, always take hold of the plug itself and never the mains cable, otherwise this may damage the mains cable.
- Do not make any technical modifications to the appliance or its features.
- Repairs and any other work on the appliance must only be conducted by our customer service. The same applies for replacing the mains cable (when necessary).
- Spare mains cables can be ordered from our customer service.



Warning

Risk of poisoning!

Poisonous fumes may be given off by cleaning agents that contain solvents, e.g. cleaning solvent.

Do not use cleaning agents that contain solvents.



Warning

Risk of electric shock/material damage/damage to the appliance!

If moisture penetrates the appliance, this may cause it to short circuit.

Do not use a pressure washer, steam cleaner, hose or spray gun to clean your appliance.



Warning

Risk of injury/material damage/damage to the appliance!

The use of spare parts and accessories supplied by other brands is dangerous and may result in injury, material damage or damage to the appliance. For safety reasons, use genuine spare parts and accessories only.

Caution!

Material damage/damage to the appliance

Cleaning agents and agents for pretreating laundry (e.g. stain removers, prewash sprays, etc.) may cause damage if they come into contact with the surfaces of the appliance. Therefore please note:

- Do not allow these agents to come into contact with the surfaces of the appliance.
- Clean the appliance and operation panel with a soft, damp cloth.
- When cleaning don't spray water directly to the parts of the washer, it may make the life span shorter. also an electric shock or fire may take place.
- Remove any detergent, spray or other residues immediately.

Appliance operation

After wash cycle



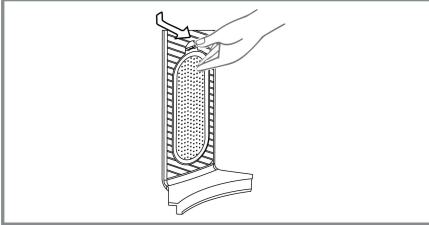
Warning

- Don't keep wet laundry or wet item on the spin lid. The water from wet cloths might enter the machine and affect the electrical components leading to electrical shock.

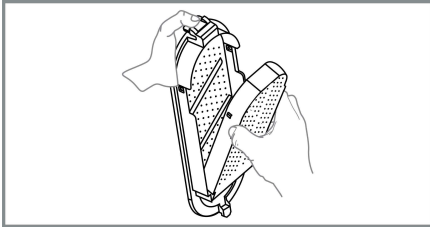
Cleaning the lint filter

During the wash cycle, washing powder residue and lint accumulate in the tub's filters. Clean these filters after every wash, as follows:

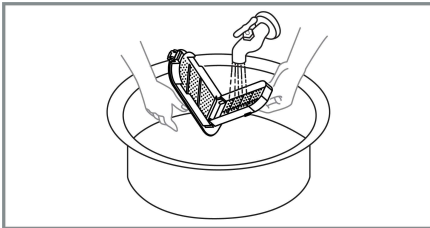
1. Remove the filter from the holder.



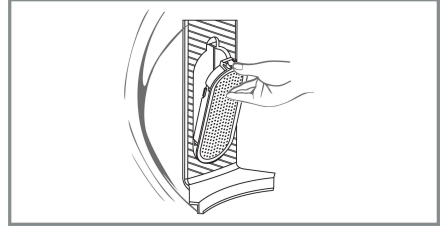
2. Open the flap as shown.



3. Clean it with running water and put it back in.



4. Place the filter back into the holder.



You have now successfully cleaned the filter.



What to do in the event of a fault.



Warning **Risk of injury!**

If you reach into the drum while it is still rotating, you risk injuring your hands. Wait until the drum has stopped rotating.

Help with the appliance

Faults	Cause/remedy
The Washing machine does not work.	Check that the power cord is securely plugged into a functioning power outlet. Power outage?.
Clothes do not move freely.	Check : Is the laundry overloaded?
Loud noises, vibrations or machine movement during the spin cycle.	Make sure that the appliance is completely leveled and clothes are loaded evenly, follow the instruction page 23.
Water does not drain.	Ensure that you lay the drain hose down flat.
The Spin dryer basket does not run.	Is the spin dryer lid closed completely? Ensure Spin timer knob not at zero position Are laundry (socks etc.) falling out of the spin dryer basket and clinging to the axle?
The water drain out immediately.	Is the drain flap/knob is in open condition? Is the drain hose clogged with scrap? Lock the drain hose in the drain hose C-clamp. Half fill the wash tub with the water and try for drain again. (scrap will be removed with the water pressure.)
Impeller not moving.	If the wash timer is beyond 15 minutes, it is just in the process of soaking and not a breakdown.
More detergent than usual is accumulating in the filter and drum.	You have been using too much detergent. Make sure you follow the detergent manufacturer's instructions.
There is detergent residue on the laundry.	<ul style="list-style-type: none"> ■ Some phosphate-free detergents contain water-insoluble residue. ■ Rinse your clothes one more time.
Odours in the washing machine.	Add standard washing powder or a detergent that contains a bleaching agent. Note: To prevent foaming, only use half of the amount of detergent recommended by the detergent manufacturer.
If you cannot rectify a fault yourself (after switching the machine off and then on again) or a repair is required:	
<ul style="list-style-type: none"> ■ Turn off the tap and call the after-sales service. ■ Switch off the appliance and pull the mains plug out of the socket. 	



Technical data

Note:

Check the voltage, frequency and maximum load on your appliance's rating plate.

Models:

Dimensions (in mm)	Weight (in kg)	Rated voltage	Rated power (in W)	Rated frequency (in Hz)	Maximum load (in kg)
840 x 500 x 940	21.9	220-240	360	50	7.0
840 x 500 x 940	21.9	220-240	380	50	7.5
840 x 500 x 940	21.9	220-240	410	50	8.0
830 x 480 x 964	21.8	220-240	380	50	7.5
830 x 480 x 964	21.8	220-240	410	50	8.0
840 x 500 x 940	23.2	220-240	410	50	8.0
840 x 500 x 1008	23.6	220-240	440	50	8.5
840 x 500 x 1008	23.6	220-240	480	50	9.0
840 x 500 x 1008	25	220-240	440	50	8.5
840 x 500 x 1008	25	220-240	480	50	9.0
875 x 520 x 1020	26.5	220-240	520	50	10.0
875 x 500 x 1020	26.5	220-240	560	50	11.0

Water pressure (for all models):
0.2 - 1.4 bar



Warranty terms and conditions

Product	Standard warranty period	Warranty on parts
washing machine	2 years	2 years (only on motor)

1. The warranty is confined only to the first purchase of the appliance and is non-transferable. This warranty card shall be presented to our staff at the time of service and the warranty shall be void if the warranty card is altered / tampered with or lost.
2. The Warranty period (both Standard Warranty Period and Extended Warranty Period) starts from the date of purchase of the appliance.
3. The warranty covers only manufacturing defect in material and workmanship that may arise despite normal operation and usage of the appliance, as prescribed in the instruction manual.
4. Repairs, installations and removal of the appliance shall be carried out only by an Authorized Service Personnel, failing which this warranty will be void.
5. In the event of change of address, the new address shall be intimated to the Authorised Service Center by calling our after-sales service. Enclosed after-sales service directory.
6. Repairs & replacements of parts would be purely at the discretion of the Authorised Service Personnel only. The company's obligation under this warranty shall be limited to repair and providing replacement of defective parts only. It is hereby clarified that after the Standard Warranty Period, visiting charges will be applicable for all visits and the same will be borne by the customer. In the Extended Warranty period, in case the appliance needs to be transported to the Authorised Service Centre for repair, the transportation charges from and to the place of installation shall be borne by the customer.
7. The customer shall provide a reasonable, sufficient and safe working space to access the appliances for service. The customer is liable to move away all blocking objects or move the appliance to an appropriate location with electricity/ water supply and drainage for testing of the appliance.
8. In case repair cannot be completed onsite, the company reserves the right to carry the appliance to its authorised service centre and return the same after repair.

en Warranty terms and conditions

9. In case of appliances installed beyond municipal limits of the jurisdiction of company's Authorized Service Center, all expenses incurred in transportation of the appliance or parts thereof from and to the company's Authorized Service Center, as well as expenses incurred on deputing of service personnel/ technician towards conveyance and other incidental expenses, will be borne by the customer.
10. In case of repairs the appliance and/ or the replaced spare part will be warranted only for the remaining of the original warranty period and the replaced components will become property of the company.
11. The company shall be under no obligation or deemed to be in default for any delay or failure in performance resulting from causes beyond its reasonable control (e.g. strikes, floods, earthquakes etc.) including but not limited to delay in servicing due to non-availability of spare parts and / or accessories.
12. In case of repair, the company owns the right to repair or replace the spare part, which are tested thoroughly to ensure the appliance is operational.
13. Authorized Personnel appointed and trained by the company will provide repair services to the customer if required.
14. Warranty not applicable in the following cases.
 - a. The warranty card is not completed properly at the time of purchase.
 - b. The completed warranty card is not presented to authorized service personnel at the time of service of the product.
 - c. Product is not purchased from an authorized sales dealer.
 - d. The product is used for commercial purposes. The product is used at any places such as public bathroom, lodging house, hotels, dormitory etc.
 - e. The serial number is deleted, defected or altered.
 - f. Noise or vibration that is considered as normal for example water drain sound, spin sound, spin tub hitting or warning beeps.
 - g. Removal of foreign objects/ substances from machine including the drain valve and inlet hose filter for example coin, grit, safety pin, buttons, hooks, Dirt accumulation etc.
 - h. Replace fuse, correcting house wiring, house plumbing and defect or damage caused by household pets, rats, cockroaches or any other animal or insects.

WARRANTY CARD

Customer's name:
Address:
City:
Pin:
State:
Mobile:
Email:
Model/E-Nr:
Serial No:
Date of Purchase:
Date of Expiry:

BSH Home Appliances Private Limited

WARRANTY CARD - copy

Customer's name:
Address:
City:
Pin:
State:
Mobile:
Email:
Model/E-Nr:
Serial No:
Date of Purchase:
Date of Expiry:

BSH Home Appliances Private Limited

Dealer's name: Customer's Signature:



Environmental Protection



Dispose of packaging and the appliance in an environmentally responsible manner.

This appliance is certified in accordance with the guidelines on E-waste (Management) Rules 2022 which govern waste electrical and electronic equipment. The guidelines provide a framework for the return and recycling of used Appliances.

Note: This product doesn't contain any of hazardous substances as specified in the E-waste.

Do's

- Please visit our website to find out more details regarding e-waste disposal.
- Consult the authorized service center as to whether the Electronic Equipment can be repaired or not, before discarding.
- Consult the retailer about appliance take back schemes.

Don'ts

- Don't dump the discarded Electronic Equipment in the open or in any land fill site, as this will result in contamination of the soil and the ground water.
- Don't dispose of the discarded Electronic Equipment in household bins or Municipal bins.
- The product is not meant for re-sale to any unauthorized agencies/scrap dealers.
- Don't keep any replaced spare parts from the product in an exposed area.



Customer Service

If you cannot rectify the error yourself by turning the appliance off and on again, please contact our after-sales service. → Enclosed after-sales service directory

We will always find an appropriate solution and, where possible, prevent the need for an engineer to visit.

Please provide the after-sales service with the product number (E no.) and the production number (FD) of the appliance.

G/Pt0 _____

HF _____

E no.

Product number

FD

Production number

You can find this information:

On the inside of the lid and on the back of the appliance.

You can trust in the manufacturer's expertise.

Contact us for assistance. This will ensure that the repair is carried out by trained service engineers with genuine spare parts.

Helpline no.: 1800-266-1880

(Monday to Saturday - 8 am to 8 pm)

Email ID: service.in@bosch-home.com

Chat with us (WhatsApp):

+91-8451000555

This image shows a single sheet of white paper with horizontal ruling lines. The lines are evenly spaced and run across the width of the page. There are no margins, text, or other markings on the paper.



Thank you for buying a Bosch Home Appliance!

Register your new device on MyBosch now and profit directly from:

- **Expert tips & tricks for your appliance**
- **Warranty extension options**
- **Discounts for accessories & spare-parts**
- **Digital manual and all appliance data at hand**
- **Easy access to Bosch Home Appliances Service**

Free and easy registration – also on mobile phones:

www.bosch-home.com/welcome



Looking for help? You'll find it here.

Expert advice for your Bosch home appliances, need help with problems or a repair from Bosch experts.

Find out everything about the many ways Bosch can support you:

www.bosch-home.com/service

Contact data of all countries are listed in the attached service directory.

BSH Household Appliances Manufacturing Pvt. Ltd.

Arena house, 2nd floor, Main building,
Plot no 103, Road no 12,
MIDC, Andheri, Mumbai - 400 093
www.bosch-home.in



xxxxxxxxxx (050917)

en