



GV 44x Unterbau SK + Sm Br-Sockel - k.SW 9001 881 827 (0310)

- de** Montageanleitung
*) über Kundendienst erhältlich
- da** Monteringsvejledning
*) Kan købes hos serviceafdelingen
- sv** Monteringsanvisning
*) kan fås via Service
- no** Monteringsanvisning
*) fåes hos kundeservice
- fi** Asennusohje
*) Saatavissa huoltopalvelusta

1



2a

2b

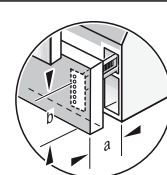
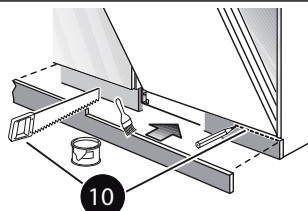
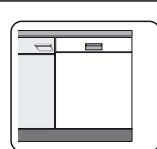
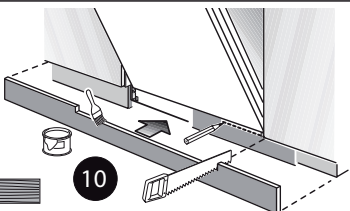
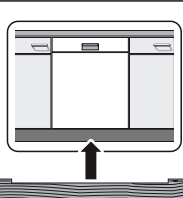
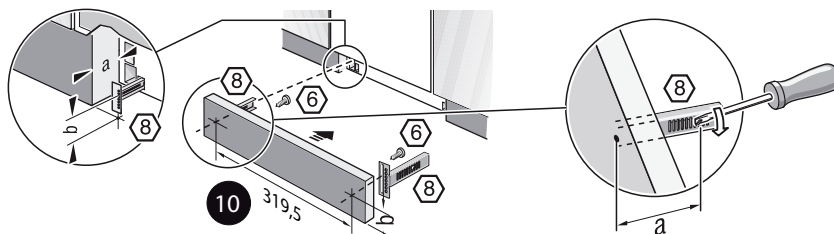
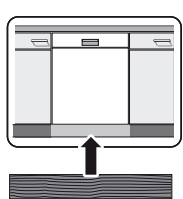
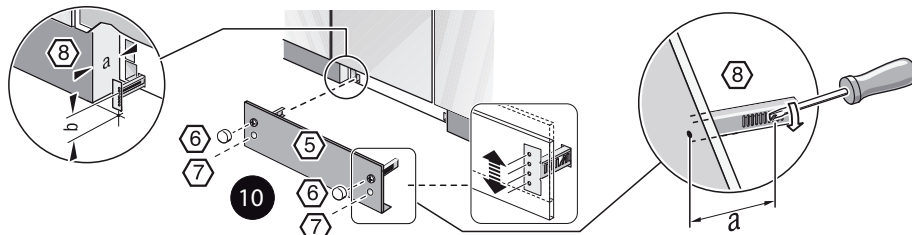
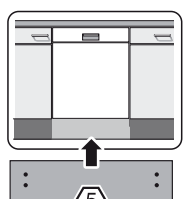
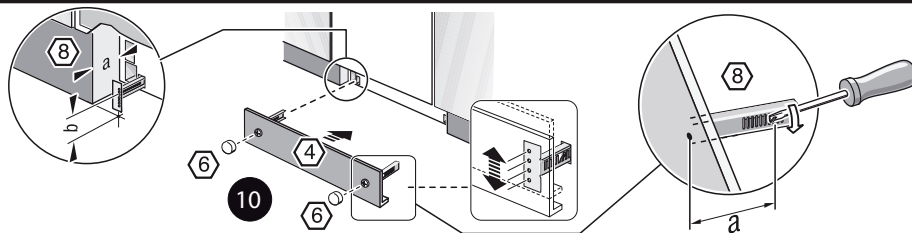
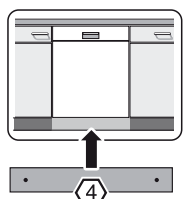
3

4

5

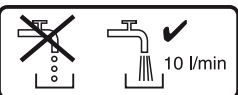
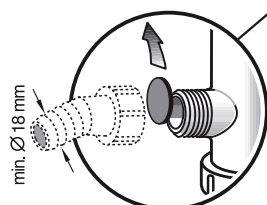


6



7

Scheibe entfernen
Fjern skive
Avlägsna skiva
Fjern skiven
Poista levy



Dichtheit nach einem Spülgang prüfen
Kontrollér tæthed efter en vask
Kontrollera tæthet efter en diskning
Kontrollér tettheten etter en vaskeomgang
Tarkista tiiviyys pesun jälkeen

max. 10 Nm

GB >>>> GB

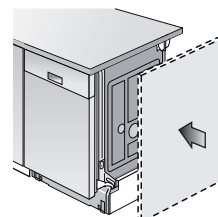
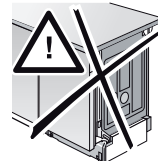
ø 38 mm



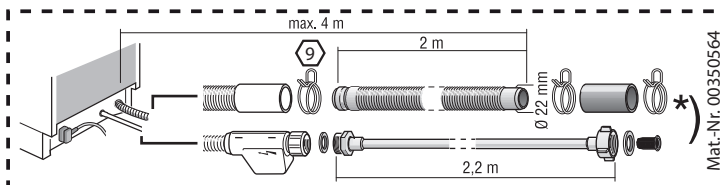
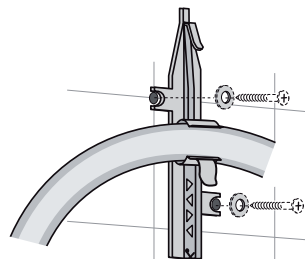
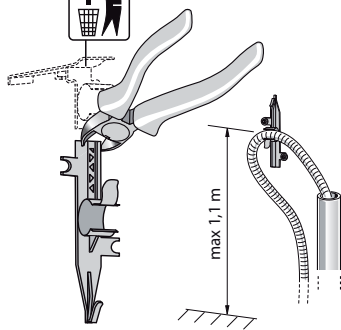
26.4 mm 20.9 mm
(G 3/4") (G 1/2")



0.05 - 1 MPa
(0.5 - 10 bar)
max. 60°C



GB



Mat.-Nr. 00350564



5 m



EU *) Mat.-Nr. 12022522