



visit www.bosch-home.in for digital UM,
QRG details in regional languages, DEMO video

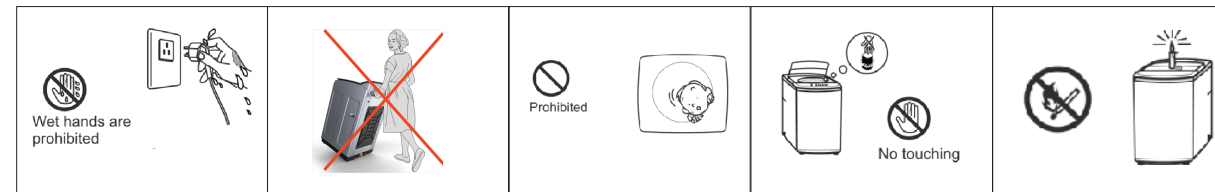
For Service Queries Customer Care No : **1800-266-1880**
Monday - Saturday 8:00 am to 8:00pm

Quick Reference Guide

Error Codes

Error Code	Problem	Corrective Action
E1	Water not filled in	Open the water tap / clean the inlet filter
E2	Water is not drained out	Clean the drain pump / drain hose / drain pipe
E3	Lid open	Close the lid fully / remove trapped laundry
E4	Unbalanced load	Redistribute the load by hand
E5	Safety switch not functioning	Safety switch not functioning
CL	Lid open when child lock active	Switch OFF, wait 5sec then switch ON again
C1-C11	Failure due to inverter	Call the after-sales service
F0-F8	Other faults	Call the after-sales service

Safety & Functional Do's & Dont's Refer the User Manual for more Safety points



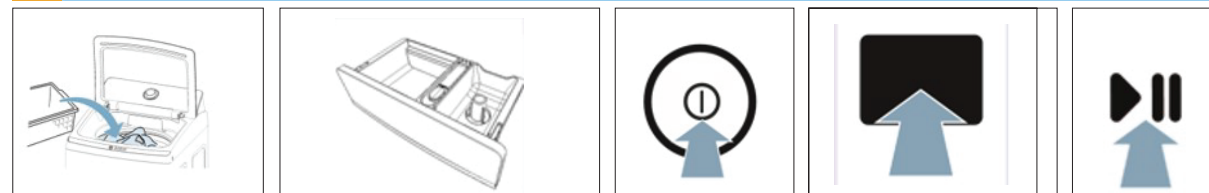
Do not pull out or insert plug with wet hands to avoid shock
Do not move the machine while in operation
Do not let children climb or peer into the machine
Do not take clothes or put hands in the drum during spin
Keep the machine away from heat sources like candle, incense, heaters etc.

Placement of appliance



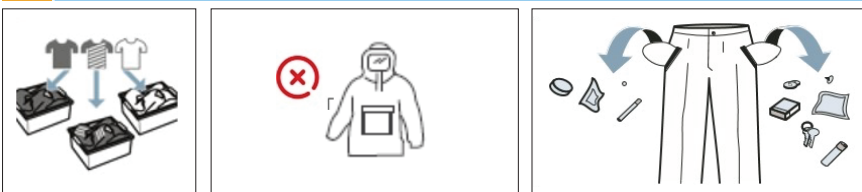
Must be in proper level
Do not use extension box
Do not place in wet area and do not pour water
Drain pipe must be flat, bend must be <15cm

How to quick start a wash cycle



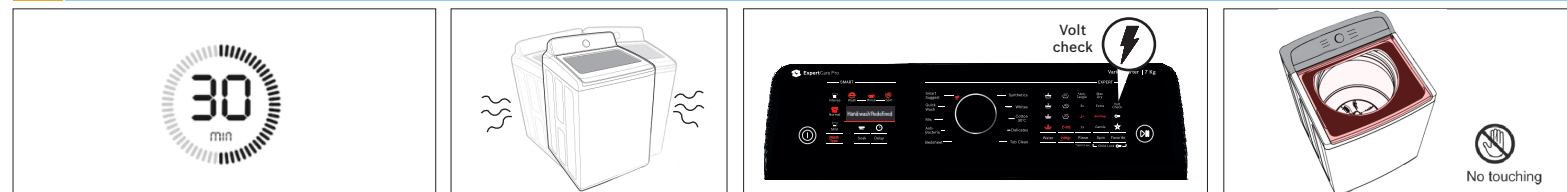
Open the lid and load the laundry up to the brim of the drum
I.- Powder/Liquid detergent. II- softener
Close lid and power ON
Select program and level settings
Press START

Preparation for a wash



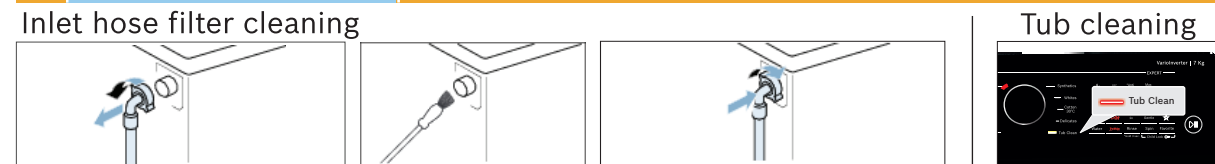
Sort Laundry
Do not wash any jackets or coats
Always empty pockets

Normal behaviour of the appliance

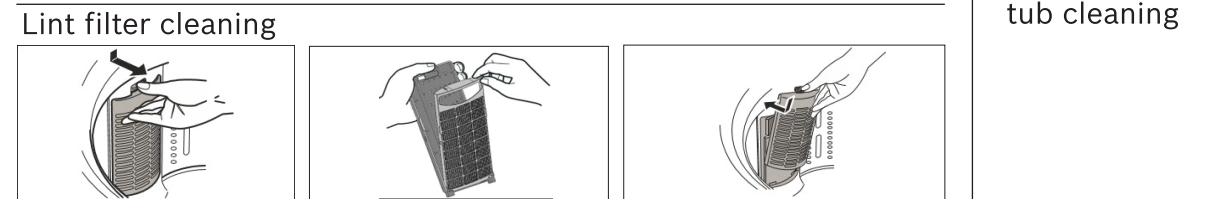


Actual cycle duration may differ from display time due to water pressure, unbalance
Minor noise and vibration may occur during spin
In case of voltage fluctuation machine will suspend and resumes back once it is normal
During hot wash cycle, the lid glass might be hot

Cleaning & Maintenance Ensure water tap closed & power OFF before cleaning

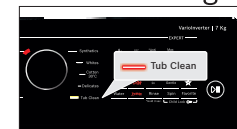


Remove the hose from the rear of appliance
Clean filter with a small brush
Reconnect the hose and check for leaks



Remove the filter from holder
Remove net bag, clean it and put back
Put filter back into the holder

Tub cleaning



LED glows when there is need of tub cleaning