

Safety and precautions

- This appliance is not intended for use by persons (including children) with reduced physical, sensory or mental capabilities, or lack of experience and knowledge, unless they have been given supervision or instruction concerning use of the appliance by a person responsible for their safety.
- Children should be supervised to ensure that they do not play with the appliance.
- If the supply cord is damaged, it must be replaced by the manufacturer, its service agent or similarly qualified persons in order to avoid a hazard.
- The new hose-sets supplied with the appliance are to be used and that old hose-sets should not be reused.
- Do not connect the valve to the hot water supply if the product is intended to be connected to cold water supply only.
- Do not connect the cold water valve to the hot water supply if the product incorporates two valves, the red one is for hot water, the blue one is for cold water.
- The openings must not be obstructed by a carpet.
- This appliance is for indoor use only.

Safety and precautions

Observe the following items in order to prevent from injuring yourself, others and the damage of property:



Warning

This indicates serious injury or death to human being may be caused.



Caution

This will remind you that injury to people and damage to property may occur.

Please observe following contents of graphics.



This graphics represents [cause attention] ,and detailed cautions will be displayed inside the graphics.



This graphics represents [operation prohibited], and detailed prohibitive items will be displayed inside the graphics.



This graphic represents [forcible execution], and detailed forcible execution items will be displayed inside the graphics.



Warning

Do not disassemble and assemble the machine without authorization.



No dismantling



Do not insert your hand and take out clothes inside the spin barrel before it is fully stopped.



No touching



Do not install the machine in damp and raining environment to avoid electric shocking, catching fire, faults and distortion accidents.



No dampness



Do not directly rinse the machine with water when cleaning.



No rinsing

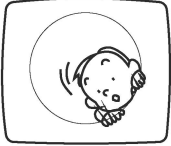


 **Warning**

Do not let children climb the machine or peer into the rotating spin barrel to avoid accidents.



Prohibited



It is prohibited to wash the clothes touching with kerosene, gasoline, alcohol and other flammable materials.



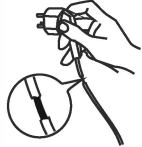
Prohibited



Do not damage power flexible cord and power plug to avoid electric shocking, short circuit and catching fire.



Prohibited



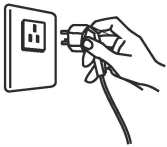
Regularly clean the power plug to remove dust and dirt to avoid contact failure.



Pull out plug from the socket if the machine is not in use.



Pull out the plug

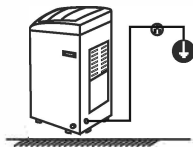


Well connect the earth line of socket to avoid electric shocking by accidental leakage.

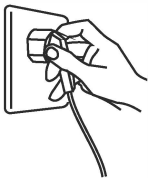
(earthing)



Earthing



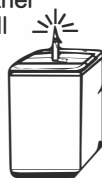
Insert the power plug tightly.



Do not place on the washer burning candle, mosquito-repellent incense, cigarette and other flammable things, as well as electric stove, air heating fan and other heating sources.



Smoke and fire prohibited



Use correct power source.

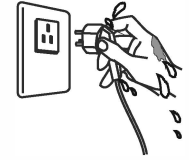
Ensure that the main plug and socket are compatible and do not use multi plug socket provisions or extension boards.



Do not pull out or insert the plug with wet hands to avoid electric shocking.

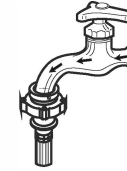


Wet hands are prohibited



 **Caution**

Ensure that the water inlet pipe is connected and the tap is opened before washing clothes.



The water temperature shall not exceed 50°C when washing with warm water.



Prohibited



Customers are not allowed to change the power line without permission.



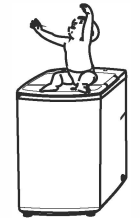
Prohibited



It is strictly prohibited to place and sit children or lay weights on the washer.



Prohibited



Do not pull the electric cord when pulling out the plug.



Do not wash down jacket, raincoat, fishing coat and similar clothes in the washer.



Prohibited

