



BOSCH

Installation and operating instructions

RDH06101, RDH06111



Table of Contents

1 Safety information	2
2 Product description	4
3 Installation instructions	5
3.1 Installation	5
3.1.1 Preparation for installation	5
4 Specifications	6
5 Operating instructions	7
5.1 Operating the appliance	7
5.1.1 To switch on	7
5.1.2 To switch off	7
5.1.3 To regulate the water temperature	7
5.1.4 Winter operation	7
5.2 Cleaning	7
5.3 Maintenance	7
6 Environmental protection/disposal	7
7 Guarantee	8

1 Safety information

This appliance is intended for domestic use and the household environment only.

- Install and operate the appliance as described in the text and illustrations. We do not accept liability for damage resulting from failure to heed these instructions.
- This appliance is intended for use up to an altitude of 2000 m above sea level.
- The appliance may only be installed and stored in a frost-free room (due to residual water).
- The device is not suitable for supplying water for showering.



WARNING:

Risk of electric shock!

Switch off the mains voltage supply immediately if a fault occurs (RDH 06101, RDH 06111).

Immediately shut off the cold water supply to the appliance should it leak.

These installation instructions are intended for plumbers, heating engineers and electricians. All instructions must be observed. Failure to comply with instructions may result in

material damage and personal injury, including possible loss of life.

- ▶ Read the installation instructions (heat source, heating controller, etc.) before installation (→ chapter 3).
- ▶ Observe the safety instructions and warnings.
- ▶ Observe national and regional regulations, technical rules and guidelines.
- **The continuous-flow heater may only be connected and put into operation by a qualified professional.**
- **In order to avoid potential sources of danger, repairs and maintenance may only be undertaken by a suitably qualified specialist. Improper repairs can lead to risk of serious injury to the user.**
- **Never open the appliance without disconnecting the power supply beforehand.**
- The statutory regulations of the respective country, as well as those of the local electricity and water suppliers, must be adhered to.
- IEC 600364-7-701 (DIN VDE 0100, par 701) must be observed when installing the appliance and/or electrical accessories.
- The continuous-flow heater is a Class I appliance and **must** be connected to the protective earth.

- The appliance must be permanently connected to the electrical connections (RDH06101, RDH06111). **The conductor cross-section must comply with the installed appliance power.**

**CAUTION:**

Earthed water pipes may give the appearance of a connected protective earth.

- To guarantee compliance to relevant safety regulations, an all-pole separator must be fitted during installation, according to chapter 4. The contact opening must be at least 3 mm.
- Ensure that the inlet water pressure, maximum and minimum, is according with the value specified by the manufacturer (→ chapter 4).
- The water inlet of this appliance shall not be connected to inlet water obtained from any water heating system.
- Do not use plastic pipes. Steel or copper pipes are suitable for the cold-water supply. Insulated copper pipes are particularly suitable for the hot-water pipes.
- **Disconnect the electrical connection cable from the supply and shut off the water supply before connecting the appliance!**

- **Connect the water supply and then connect the electrical supply.**
- **The appliance must be disconnected from the power supply and the connection to the water supply must be shut off when any work is carried out.**
- Do not touch electrically live parts after installation.
- The appliance should be disconnected from the electrical mains supply when working on the water supply. After service work is complete, proceed as during the first-time appliance start-up.
- No changes may be made to the appliance.
- The appliance may only be used for heating drinking water for household use.
- The mixer and the warm water pipe may be hot. Please inform and instruct children appropriately.
- Do not use aggressive or abrasive cleaning detergents!
- Do not use a steam cleaner.

Safety of electrical devices for domestic use and similar purposes

The following requirements apply in accordance with EN 60335-2-35 in order to prevent hazards from occurring when using electrical appliances:

“This appliance can be used by children of 3 years and older, as well as by people with reduced physical, sensory or

mental capabilities or lacking in experience and knowledge, if they are supervised and have been given instruction in the safe use of the appliance and understand the resulting dangers. Children shall not play with the appliance. Cleaning and user maintenance must not be performed by children without supervision.”

“If the power cable is damaged, it must be replaced by the manufacturer, its customer service department or a similarly qualified person, so that risks are avoided.”

Congratulations on purchasing this BOSCH appliance. You have acquired a top-quality product, which will give you a lot of enjoyment.

Please read this installation and operating instruction manual carefully, then act accordingly! Store for future reference.

2 Product description

This instruction manual describes various appliance models.

Only for permanently connected appliances: The appliance complies with IEC 61000-3-12.

- The hydraulically controlled flow-through water heater is suitable for either an open (depressurised) or closed (pressurised) connection.
- The flow-through water heater continuously heats water while it flows through the appliance.
- The appliance must not be operated with preheated water, otherwise the overtemperature protection will be triggered.
- **RDH 06101, RDH 06111:** These appliances are designed for permanent electrical connection.

RDH 06111	High level appliance
RDH 06101	Under counter appliances

Table 1

3 Installation instructions

Install the continuous-flow heater as described in the illustrated section. Observe the instructions in the text.

3.1 Installation

I. Unpacking/scope of supply

- Unpack the appliance and check for transport damage.
- Dispose of the packaging and, where applicable, the old appliance, in an environmentally conscious manner.

1	Housing
2	Mounting (2 screws, 2 wall plugs)
3	Filter and sleeve (inserted in inlet)
4	Jet regulator and seal
5	Only for appliances with a permanent electrical connection: Rubber grommet

Table 2

3.1.1 Preparation for installation



Important!

Only use the enclosed installation set.

- Shut off water supply. The electrical connection (connection cable) must be disconnected from the power supply. Unscrew the fuse or switch off the circuit breaker.
- There must be a clearance of approximately 60mm on all sides of the appliance for installation.
- Observe the technical data for the appliance.
- **RDH 06101:** Unscrew the screws on the housing cover and remove the lid.

II. Wall mounting

- Secure the appliance using the installation template, screws and wall plugs so that it is vertical and flush against the wall:

1	Locate the appliance on the screw and press down.
2	Screw in the second screw through the mounting tab and tighten.

Table 3

- **RDH 06101, RDH 06111:** For an exposed electrical connection, the different methods of routing the supply line found on the assembly template must be observed.
- **RDH 06101, RDH 06111:** The sleeve must fit tightly round the connection cable. If the sleeve is damaged during installation, the holes must be sealed water-tight.

III. Water connection

A Pressurised connection

B Depressurised connection

- Fit the jet regulator supplied.
- Check the inserted filter and sleeve in the water inlet.
- Ensure that the connection pipes are fitted to the adapter along the axis of the pipes.
- Tighten the union nuts firmly to the adapter with an open-jawed spanner.

The T-piece and flexible connecting hose (for pressurised connection) are available from a specialist store.

For a depressurised connection, a depressurised fitting must be used, e.g. fitting BZ13051 which can be obtained as a special accessory.

IV. Electrical connection

C Flow switch

D Temperature limiter

RDH 06101, RDH 06111

The installation of non plug-in ready appliances must be undertaken by the respective utility operator or by a qualified specialist company, who can also assist you when you are requesting the approval of the utility company for installation of the appliance.

The appliances must be connected with a NYM-J3x4 (mm²) mains lead. Leads with a larger cross-section must not be used.

- Connect the appliance in accordance with the connection diagram on the strip terminal.
- Screw the housing cover back on.
- **After installation, give the user the operating instructions and explain how the appliance works.**

4 Specifications

Type		RDH 06101	RDH 06111
Model		pressurised (closed) – depressurised (open)	
Weight	[kg]	1.8	1.8
Dimensions	[mm]	250 x 144 x 100	
Operating mode		continuous	
Mains connection		Permanent electrical connection	
Nominal voltage	[V]	220 - 240	
Nominal power (230V)	[kW]	6.0	6.0
Class of protection in accordance with IEC 335-1		IP 24 (splash-proof)	
Fuse protection	[A]	32	32
Frequency	[Hz]	50	50
Fittings connection	[Zoll]	3/8	1/2
Minimum flow pressure	[MPa (bar)]	0.1 (1.0)	
Maximum flow pressure	[MPa (bar)]	1.0 (10.0)	
Water volume at switch-on approx.	[l/min]	2.3	2.3
Water volume at switch-off approx.	[l/min]	1.8	1.8
Typical warm water output at 37 °C	[l/min]	3.0	3.0
Energy efficiency class		A	A
Load profile		XXS	XXS
Annual energy consumption	[kWh]	489	489
Daily energy consumption	[kWh]	2.270	2.270
Sound power level	[dB]	15	15
Hot water heating energy efficiency	[%]	38	38

Table 4

5 Operating instructions

Please read and observe the detailed safety instructions at the start of these instructions!



Important: The appliance may never be exposed to frost!



WARNING:

Risk of electric shock!

Switch off the mains voltage supply immediately if a fault occurs (RDH 06101, RDH 06111).

- Immediately shut off the cold water supply to the appliance should it leak.

5.1 Operating the appliance

Flow-through water heaters in this product series work automatically.

5.1.1 To switch on

- Open the tap fully.

The flow-through water heater switches on.

The water is heated as it flows through the appliance.

5.1.2 To switch off

- Close the tap, the appliance switches off.

5.1.3 To regulate the water temperature

- Open the tap fully, the appliance switches on.
- Now increase the temperature by reducing the water flow volume.

5.1.4 Winter operation

NOTICE:

It is possible in winter that the supply temperature of the water is reduced and the required outlet temperature is no longer achieved.

- In order to compensate for this temperature reduction, please reduce the water quantity on the tap until the required water temperature is achieved.

5.2 Cleaning

- Simply wipe the appliance with a damp cloth.
Do not use acidic or abrasive cleaning materials.
- Clean dirt and lime deposits from the filter in the jet regulator.

NOTICE:

It is normally not necessary to descale the appliance. However, extremely hard water and the frequent flows of very hot water can cause the appliance to scale up. In this case please contact our after-sales service.

5.3 Maintenance

- **In order to avoid potential sources of danger, repairs and maintenance may only be undertaken by a suitably qualified specialist.**
- **The appliance must be disconnected from the power supply and the connection to the water supply must be shut off when any work is carried out.**

If you call the after-sales service for assistance, please specify the **E no.** and **FD no.** of your appliance.

6 Environmental protection/disposal

Environmental protection is a fundamental corporate strategy of the Bosch Group.

The quality of our products, their economy and environmental safety are all of equal importance to us and all environmental protection legislation and regulations are strictly observed. We use the best possible technology and materials for protecting the environment taking account of economic considerations.

Packaging

Where packaging is concerned, we participate in country-specific recycling processes that ensure optimum recycling. All of our packaging materials are environmentally compatible and can be recycled.

Used appliances

Used appliances contain valuable materials that can be recycled.

The various assemblies can be easily dismantled. Synthetic materials are marked accordingly. Assemblies can therefore be sorted by composition and passed on for recycling or disposal.

Used electrical and electronic appliances

Electrical or electronic devices that are no longer serviceable must be collected separately and sent for environmentally compatible recycling (in accordance with the European Waste Electrical and Electronic Equipment Directive).

To dispose of old electrical or electronic devices, you should use the return and collection systems put in place in the country concerned.

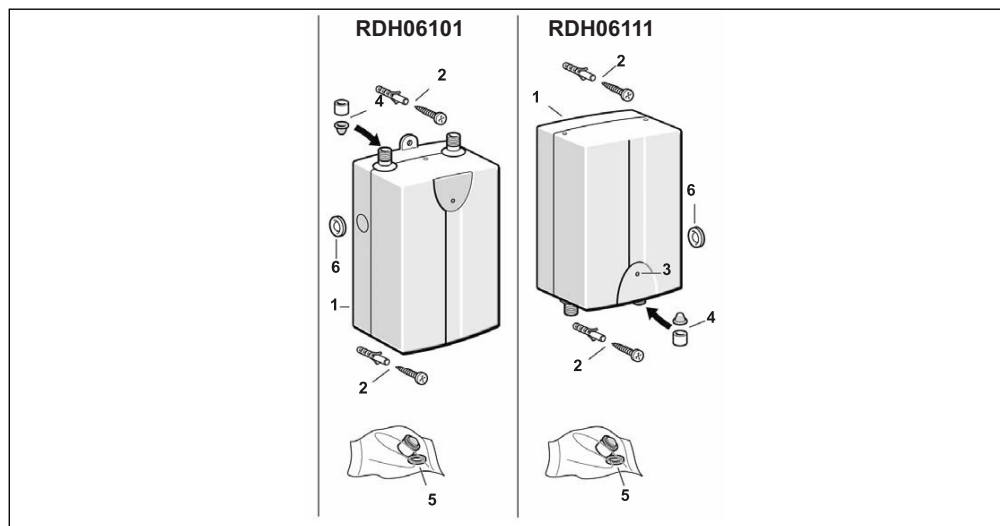
Batteries must not be disposed together with your household waste. Used batteries must be disposed of in local collection systems.

7 Guarantee

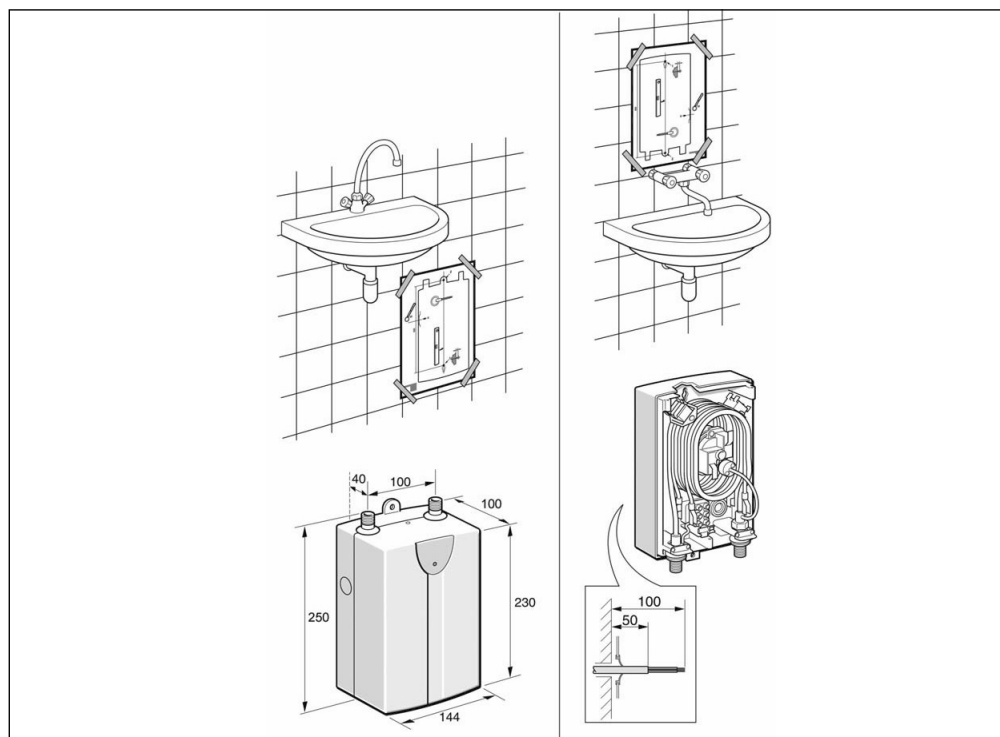
The guarantee conditions for this appliance are as defined by our representative in the country in which it is sold.

Details regarding these conditions can be obtained from the dealer from whom the appliance was purchased. The bill of sale or receipt must be produced when making any claim under the terms of this guarantee.

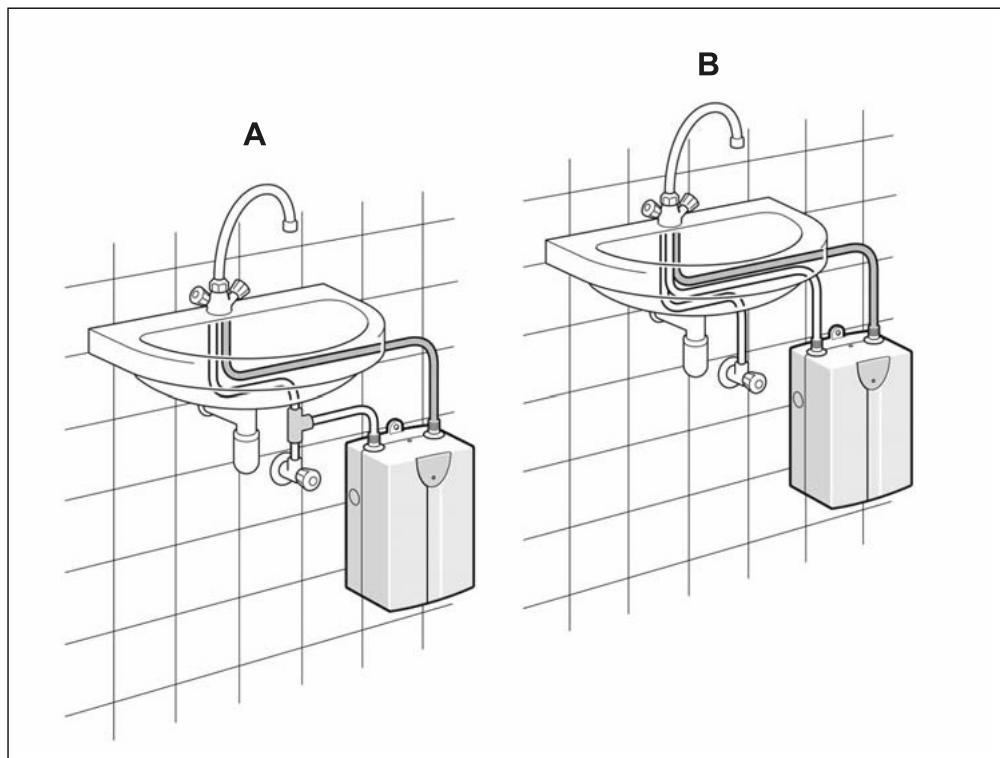
Subject to change without notice.

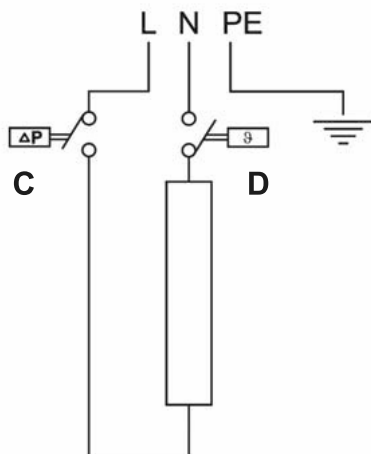


1

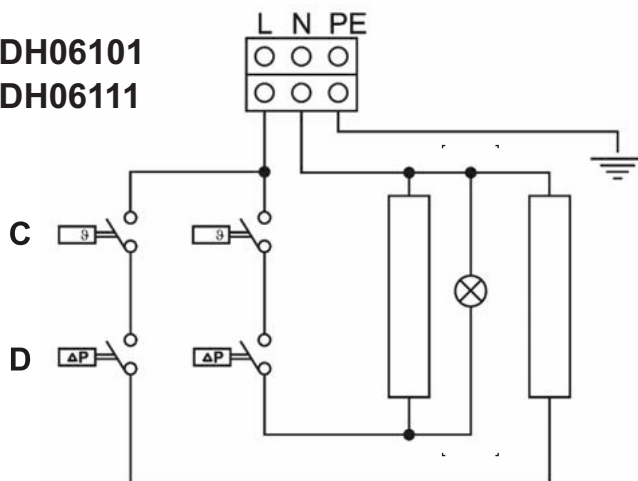


2





RDH06101
RDH06111





6720888202

Bosch Thermotechnik GmbH
Junkersstrasse 20-24
D-73249 Wernau

www.bosch-thermotechnology.com