



BOSCH



Register your
new device on
MyBosch now and
get free benefits:
**[bosch-home.com/
welcome](https://bosch-home.com/welcome)**

Washing machine

WAT286H9IN

en Instruction Manual and Installation Instructions

Your new washing machine

You have chosen a Bosch washing machine.

Please take a few minutes to read and become familiar with the advantages of your washing machine.

To meet the high quality demands required by Bosch, every washing machine that leaves our factory is carefully checked to ensure that it functions correctly and is in perfect condition.

For more information on our products, accessories, replacement parts and services, see our website www.bosch-home.com or contact our after-sales service centres.

If the operating and installation instructions describe different models, any differences will be pointed out at the relevant points in the text.



Read these operating and installation instructions before switching on the washing machine.

Display rules

Warning!

This combination of symbol and signal word indicates a possibly dangerous situation. Not heeding the warning can cause death or injuries.

Caution!

This signal word indicates a possibly dangerous situation. Not heeding the caution can cause property and/or environmental damage.

Note/tip

Information about the optimum use of the appliance/any other useful information.

1. 2. 3. / a) b) c)

The steps are represented by numbers or letters.

■ / -

Lists are represented by a small box or a dash.

Contents

 Intended use	5
--	---

 Safety instructions	5
---	---

Children/people/pets	5
Installation	6
Operation	9
Cleaning/Maintenance	10

 Environmental protection	12
--	----

Packaging/used appliance	12
Tips on economical use	12

 Positioning and connecting	13
--	----

Included with the appliance	13
Safety instructions	13
Installation surface	14
Installation on a base or a wooden joist floor	14
Installation on a platform with drawer	14
Installing the appliance in a kitchenette	14
Removing the transport locks	14
Hose and cable lengths	15
Water inlet	16
Water outlet	17
Levelling	17
Electrical connection	18
Before washing for the first time	18
Transportation	19

 Familiarising yourself with your appliance	20
--	----

Washing machine	20
Controls	21

 Laundry	23
---	----

Prepare the laundry	23
Sorting laundry	23
Starching	24
Dyeing/bleaching	24

 Detergent	24
---	----

Correct selection of detergent	24
--	----

Saving energy and detergent	25
---------------------------------------	----

 Programme default settings	25
---	----

Temperature	25
Spin speed	25
Ready in time	26
Memory programme	26
Remote start	26

 Additional programme settings	27
--	----










Water Plus	27
Speed	27
Easy-Iron	27
Prewash	27
Soaking	27
Rinse hold	28
i-DOS	28

 Operating the appliance	28
--	----

Preparing the washing machine	28
Switching on the appliance/selecting a programme	28
Calling up additional programmes	29
Change the programme default settings	29
Select additional programme settings	29
Placing laundry into the drum	29
Measure and add detergent and care products	30
Start the programme	30
Childlock/operation lock	30
Adding laundry	31
Changing the programme	31
Cancel the programme	31
Programme end during rinse hold	31
Programme end	31
Removing laundry/switching off the appliance	31

 Home Connect	32
---	----

Calling up the Home Connect menu	33
Connecting to the home network and the Home Connect app	33
Activating/deactivating Wi-Fi	35
Resetting your network settings	36

Updating the software	36	Faults and what to do about them. . .	49
Remote diagnostics.	36	 Technical data	53
Information on data protection.	37	 After-sales service	53
Declaration of Conformity	37	 Aqua-Stop warranty	54
 Intelligent dosing system.	38		
Familiarising yourself with i-DOS . . .	38		
i-DOS Detergent drawer.	38		
Before setting up i-DOS.	38		
Automatic dosing.	38		
i-DOS Setting the content of the  dispenser.	39		
i-DOS Setting the dosage	39		
Filling the dispensers.	40		
Manual dosing.	41		
Emptying the i-DOS detergent drawer, cleaning the i-DOS detergent drawer and its housing, cleaning the i-DOS pump unit	41		
 Appliance settings	43		
Activating the setting mode	43		
Changing the signal volume	43		
Changing the brightness of the touch display.	44		
Select/deselect the memory function for drum care	44		
Exiting setting mode	44		
 Sensors	44		
Automatic load sensing.	44		
Unbalanced load detection system	44		
VoltCheck	44		
 Cleaning and maintenance	45		
Machine housing/control panel	45		
Drum	45		
Descaling.	45		
The drain pump is blocked, emergency draining	45		
The drain hose at the siphon is blocked	46		
Filter in the water supply blocked	46		
 Faults and what to do about them.	47		
Emergency release	47		
Information on the display panel	48		



Intended use

- This appliance is intended for private domestic use only.
- Do not install or operate this appliance anywhere that is liable to experience frost and/or outdoor conditions. There is a risk that the appliance will be damaged if residual water in it freezes. If hoses freeze up, they may crack/burst.
- This appliance must only be used for washing domestic laundry, consisting of machine-washable items and hand-washable woollens (see label on item). Using the appliance for any other purpose is outside of the scope of its intended application and is forbidden.
- This appliance is suitable for operation with mains water and commercially available detergents and care products (must be suitable for use in washing machines).
- This appliance is intended for use up to a maximum height of 4000 metres above sea level.

Before you switch on the appliance:

Check that there is no visible damage to the appliance. Do not operate the appliance if it is damaged. Should you have any problems, please contact your specialist dealer or our customer service.

Read and follow the operating and installation instructions and all other information provided with this appliance.

Retain the documents for subsequent use or for subsequent owners.



Safety instructions

The following safety information and warnings are provided to protect you from injury and to prevent material damage to your surroundings.

It is nevertheless important to take the necessary precautions and to proceed with care when installing, maintaining, cleaning and operating the appliance.

Children/people/pets



Warning

Risk of death!

Children and other people who are unable to assess the risks involved when using the appliance may injure themselves or may find themselves in life-threatening situations. Therefore please note:

- The appliance may be used by children over the age of 8 years and by persons with reduced physical, sensory or mental capacity or by persons with a lack of experience or knowledge as long as they are supervised or have received instruction on how to use the appliance safely and they have understood the potential risks of using the appliance.
- Children must not play with this appliance.

- Do not allow children to clean or maintain this appliance unsupervised.
- Keep children under 3 years and pets away from this appliance.
- Do not leave the appliance unattended when children or other people who are unable to assess the risks are in the vicinity.

 **Warning**
Risk of death!

Children may lock themselves inside appliances and find themselves in a life-threatening situation.

- Do not position the appliance behind a door, as this may obstruct the appliance door or prevent it from opening completely.
- Once an appliance has reached the end of its life, pull the mains plug from the socket **before** severing the mains cable, and then destroy the lock on the appliance door.

 **Warning**
Risk of suffocation!

If allowed to play with the packaging/plastic film or packing components, children may become caught in these or pull them over their heads and suffocate.

Keep packaging, plastic film and packing components away from children.

 **Warning**
Risk of poisoning!

Detergents and care products may result in poisoning if consumed. If accidentally swallowed, seek medical advice. Keep detergents and care products out of the reach of children.

 **Warning**
Risk of burns!

When washing at high temperatures, the glass in the appliance door becomes hot. Stop children from touching the appliance door when it is hot.

 **Warning**
Eye/skin irritation!

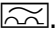
Contact with detergents or care products may cause eye/skin irritation. Rinse eyes/skin thoroughly if they/it come(s) into contact with detergents or care products. Keep detergents and care products out of the reach of children.

Installation

 **Warning**
**Risk of electric shock/fire/
material damage/damage to
the appliance!**

If the appliance is not installed properly, this may lead to a

dangerous situation. Ensure the following:

- The mains voltage on your power socket must match the rated voltage specified on the appliance (identification plate). The connected loads and the required fuse protection are specified on the identification plate.
- The mains plug and the protective contact socket must match and the earthing system must be correctly installed.
- The installation must have an adequate cross section.
- The mains plug must be freely accessible at all times. If this is not possible, in order to comply with the relevant safety regulations, a switch (all pole disconnection) must be built into the permanent installation in accordance with electrical installation regulations.
- If using a residual current circuit breaker, only use one that bears the following mark: . The presence of this mark is the only way to be sure that it fulfils all the applicable regulations.

Warning

Risk of electric shock/fire/material damage/damage to the appliance!

If the appliance's mains cable is altered or damaged, this may result in electric shock, short circuiting or fire due to overheating.

The mains cable must not be kinked, crushed or altered, and must not come into contact with any heat sources.

Warning

Risk of fire/material damage/damage to the appliance!

The use of extension cords or power strips may result in fire due to overheating or short circuiting.

Connect the appliance directly to an earthed socket that has been correctly installed. Do not use extension cords, power strips or multi-way couplers.

Warning

Risk of injury/material damage/damage to the appliance!

- The appliance may vibrate or move when in operation, potentially resulting in injury or material damage.

Place the appliance on a clean, even, solid surface and, using a spirit level to guide you, level it with the screw-in feet.

- If you take hold of any of the appliance's protruding parts (e.g. the appliance door) in order to lift or move it, these parts may break off and cause injury.
Do not take hold of any of the appliance's protruding parts in order to move the appliance.

 **Warning**
Risk of injury!

- The appliance is very heavy. Lifting it may result in injury. Do not lift the appliance on your own.
- The appliance has sharp edges on which you could cut your hands. Do not take hold of the appliance by its sharp edges. Wear protective gloves to lift it.
- If the hoses and mains cables are not correctly routed, they may constitute a tripping hazard, which may result in injury. Route hoses and cables such that they do not constitute a tripping hazard.

Caution!

Material damage/damage to the appliance

- If the water pressure is too high or too low, the appliance may not be able to operate properly, and it may also result in material damage or damage to the appliance.
Make sure that the water pressure in the water supply facility is at least 100 kPa (1 bar), and does not exceed 1000 kPa (10 bar).
- If the water hoses are altered or damaged, this may result in material damage or damage to the appliance. The water hoses must not be kinked, crushed, altered or severed.
- The use of hoses supplied by other brands to connect to the water supply may result in material damage or damage to the appliance. Use the hoses supplied with the appliance or genuine spare part hoses only.

- The appliance is secured for transportation by transport locking devices. If the transport locking devices are not removed before the appliance is operated, this may result in damage to the appliance.
It is important to completely remove all transport locking devices before using the appliance for the first time. Make sure that you retain these transport locking devices separately. It is important to refit the transport locking devices if the appliance is to be transported, in order to prevent the appliance from being damaged in transit.

Operation

Warning **Risk of explosions/fire!**

Laundry that has been pretreated with cleaning agents that contain solvents, e.g. stain remover/cleaning solvent, may cause an explosion in the drum. Rinse the laundry thoroughly with water before washing it in the machine.

Warning **Risk of poisoning!**

Poisonous fumes may be given off by cleaning agents that contain solvents, e.g. cleaning solvent.


Do not use cleaning agents that contain solvents.

Warning **Risk of injury!**

- If you support your weight/sit on the appliance door when it is open, the appliance may tip over, which may result in injury.
Do not support your weight on the appliance door when it is open.
- If you climb onto the appliance, the worktop may break, which may result in injury.
Do not climb onto the appliance.
- If you reach into the drum while it is still rotating, you risk injuring your hands.
Wait until the drum has stopped rotating.

Warning **Risk of scalding!**

When washing at high temperatures, there is a risk of scalding if you come into contact with hot detergent solution (e.g. when draining hot detergent solution into a washbasin).
Do not reach into the hot detergent solution.

 **Warning**
Eye/skin irritation!
Detergent and care products may spray out if the detergent

drawer is opened while the appliance is in operation. Rinse eyes/skin thoroughly if they/it come(s) into contact with detergents or care products. If accidentally swallowed, seek medical advice.

Caution!

Material damage/damage to the appliance

- If the amount of laundry in the appliance exceeds its maximum load capacity, it may not be able to operate properly, or this may result in material damage or damage to the appliance. Do not exceed the maximum load capacity of dry laundry. Make sure you comply with the maximum load capacities specified for each of the programs.
- If you pour the wrong quantity of detergent or cleaning agent into the appliance, this may result in material damage or damage to the appliance. Use detergents/care products/cleaning agents and softeners in accordance with the manufacturers' instructions.

Cleaning/Maintenance

Warning **Risk of death!**

The appliance is powered by electricity. There is a risk of electric shock if you come into contact with live components. Therefore please note:

- Switch off the appliance. Disconnect the appliance from the power supply (pull out the plug).
- Never take hold of the mains plug with wet hands.
- When removing the mains plug from the socket, always take hold of the plug itself and never the mains cable, otherwise this may damage the mains cable.
- Do not make any technical modifications to the appliance or its features.
- Repairs and any other work on the appliance must only be conducted by our customer service or by an electrician. The same applies for replacing the mains cable (when necessary).
- Spare mains cables can be ordered from our customer service.

Warning **Risk of poisoning!**

Poisonous fumes may be given off by cleaning agents that contain solvents, e.g. cleaning solvent.

Do not use cleaning agents that contain solvents.

 **Warning**

Risk of electric shock/material damage/damage to the appliance!

If moisture penetrates the appliance, this may cause it to short circuit.

Do not use a pressure washer, steam cleaner, hose or spray gun to clean your appliance.

 **Warning**

Risk of injury/material damage/damage to the appliance!

The use of spare parts and accessories supplied by other brands is dangerous and may result in injury, material damage or damage to the appliance.

For safety reasons, use genuine spare parts and accessories only.

Caution!

Material damage/damage to the appliance

Cleaning agents and agents for pretreating laundry (e.g. stain removers, prewash sprays, etc.) may cause damage if they come into contact with the surfaces of the appliance. Therefore please note:

- Do not allow these agents to come into contact with the surfaces of the appliance.
- Clean the appliance with nothing but water and a soft, damp cloth.
- Remove any detergent, spray or other residues immediately.



Environmental protection

Packaging/used appliance



Dispose of packaging in an environmentally-responsible manner.

This appliance is labelled in accordance with European Directive 2012/19/EU concerning used electrical and electronic appliances (waste electrical and electronic equipment - WEEE).

The guideline determines the framework for the return and recycling of used appliances as applicable throughout the EU.

Tips on economical use

- Always utilise the maximum amount of washing for the particular programme.
Overview of programmes → Supplementary sheet for the operating and installation instructions.
- Wash normally soiled laundry without prewash.
- For light and normal soiling in laundry, you can save energy and detergent. → *Page 25*
- The selectable temperatures apply to the care labels on the textiles. The temperatures in the machine may deviate from this so that you get the optimum mix of energy-saving and washing results.
- **Energy- and water-consumption information:**
These indicators tell you what the relative energy and water consumption is for the selected programs.

The more indicator segments are visible, the higher the consumption. This enables you to compare the consumption levels of the different programs when choosing your program settings and to decide on an energy- and water-saving program setting if you wish.



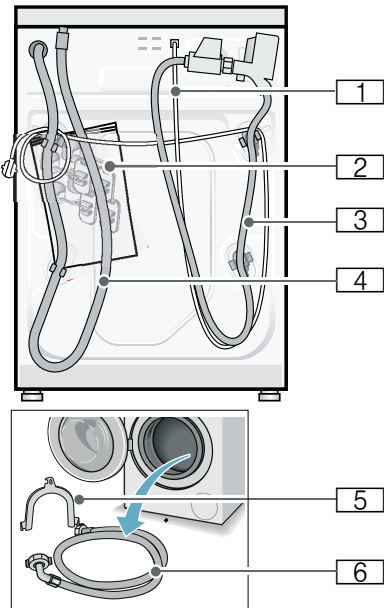
- Energy consumption
- Water consumption
- **Energy-saving mode:** The touch display lighting goes out after a few minutes, the button flashes. Touch the touch display to activate the lighting.
Energy-saving mode is not activated if a programme is running.
- **Automatic switch-off** (only until a program starts or after a program has ended): If the appliance is not operated for an extended period, it automatically switches itself off in order to save energy. Press the main switch again to switch on the appliance.
Note: If Wi-Fi is activated, the appliance will not switch itself off automatically.
- If the washing will be dried in a dryer, select the spin speed according to the dryer manufacturer's instructions.



Positioning and connecting

Included with the appliance

Note: Check that the machine has not been damaged in transit. Never use a damaged machine. If you have any problems, contact the dealer from whom you purchased the appliance or our after-sales service.



1 Mains cable

2 Bag:

- Installation and operating instructions
- After-sales service location directory*
- Warranty*
- Cover caps for fitting over openings once the transit securing devices have been removed
- Spanner*

- 3 Water supply hose on aquaStop models
 - 4 Water drain hose
 - 5 Elbow for securing the water drain hose*
 - 6 Water supply hose on standard/AquaSecure models
- * Depending on the model

In addition, a hose clamp (24 - 40 mm diameter, available from specialist retailers) is required to connect the water drain hose to a siphon.

Useful tools

- Spirit level for making sure the appliance is level
- Spanners, size:
 - WAF13 for removing the transit securing devices and
 - WAF17 for making the appliance's feet level

Safety instructions



Warning

Risk of injury!

- The washing machine is very heavy. Be careful when lifting/transporting the washing machine.
- When the washing machine is lifted by its protruding parts (e.g. the washing machine door), the components may break off and cause injuries. Do not lift the washing machine by protruding parts.
- If the hose and mains cables are not routed properly, there is a risk of tripping and injury. Lay hoses and cables in such a way that there is no risk of tripping.

Caution!

Damage to the appliance

Frozen hoses may rip/burst. Do not install the washing machine in areas exposed to frost or outdoors.

Caution! **Water damage**

The connection points for the water supply hose and water drain hose are under high water pressure. To prevent leaks and water damage, you must follow the instructions in this section.

Notes

- In addition to the safety information listed here, the local water and electricity supplier may have special requirements.
- If in doubt, have the appliance connected by a specialist.

Installation surface

Note: The washing machine be stable so that it does not move around.

- The installation surface must be firm and level.
- Soft floors/floor coverings are not suitable.

Installation on a base or a wooden joist floor

Caution! **Damage to the appliance**

The washing machine may "wander" and tip/topple from the base when spinning.

The feet of the appliance must be secured with holding brackets.

Order no. WMZ 2200, WX 9756, Z 7080X0

Note: On wooden joist floors, install the washing machine:

- In a corner, if possible,
- On a water-resistant wooden board (min. 30 mm thick) which is screwed tightly to the floor.

Installation on a platform with drawer

Platform order no.: WMZ 20490, WZ 20490, WZ 20510, WZ 20520

Installing the appliance in a kitchenette

Warning **Danger of death!**

There is a risk of electric shock if you touch live components.

Do not remove the appliance covering plate.

Notes

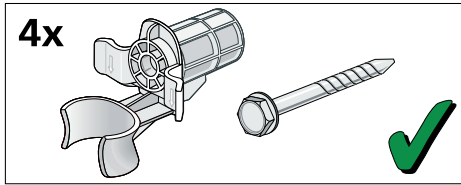
- Recess width of 60 cm required.
- Only install the washing machine underneath a continuous worktop that is securely connected to adjacent cabinets.

Removing the transport locks

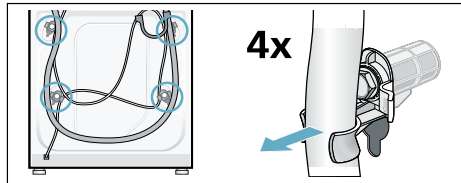
Caution! **Damage to the appliance**

- The machine is secured for transportation using transport locks. If the transport locks are not removed, the drum, for example, may become damaged when the machine is operated. Before using the appliance for the first time, make sure that you completely remove all four transport locks. Keep the locks in a safe place.
- To prevent transport damage from occurring if the appliance is moved at a later date, you must refit the transport locks before transporting the appliance.

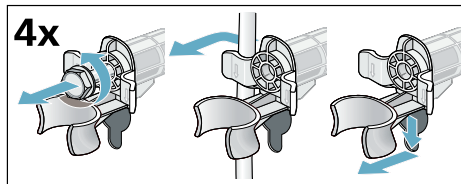
Note: Keep the screws and sleeves in a safe place.



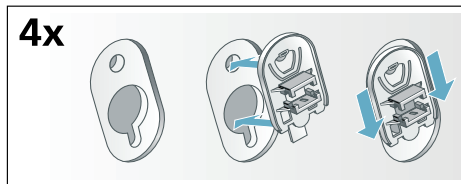
1. Take the hoses out of the holders.



2. Unscrew and remove all four transport brace screws. Remove the sleeves. To do this, remove the mains cable from the holders.

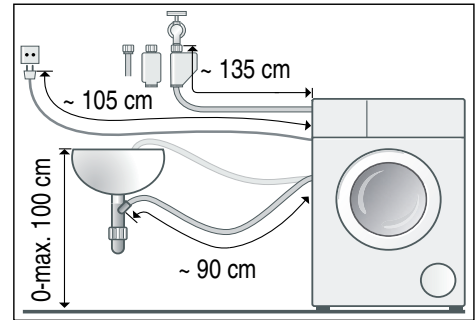


3. Fit the covers. Lock the covers firmly in place by applying pressure to the snap-in hooks.

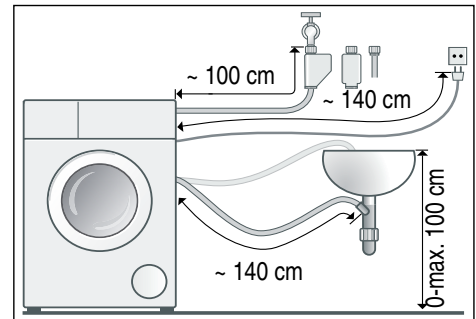


Hose and cable lengths

- Left-hand connection



- Right-hand connection



Tip: The following are available from specialist dealers/the after-sales service:

- An extension for Aqua-Stop or cold water supply hose (approx. 2.50 m); order no. WMZ2380, WZ10130, CZ11350, Z7070X0
- A longer supply hose (approx. 2.20 m) for standard model

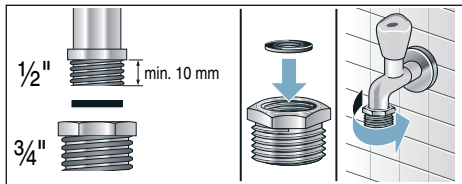
Water inlet

Warning **Danger of death!**

There is a risk of electric shock if you touch live components.
Do not immerse the Aqua-Stop safety valve in water (it contains an electric valve).

Notes

- Only operate the washing machine using cold mains water.
 - Do not connect the machine to the mixer tap of an unpressurised hot-water boiler.
 - Do not use a used supply hose. Only use the supply hose supplied or one that was purchased from an authorised specialist retailer.
 - Do not kink or squash the water supply hose.
 - Do not alter (shorten, cut through) the water supply hose (otherwise its strength is no longer guaranteed).
 - Only tighten the screw connections by hand. If the screw connections are tightened too much with a tool (pliers), the thread may become damaged.
 - When connecting to a 21 mm = 1/2" tap, first fit an adapter* with a sealing washer from 21 mm = 1/2" to 26.4 mm = 3/4".
- *supplied depending on the model



Optimum water pressure in the supply network

At least 100 kPa (1 bar)

Maximum 1000 kPa (10 bar)

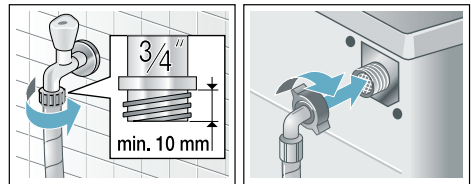
When the tap is open, the water flow rate is at least 8 l/min.

If the water pressure is higher than this, a pressure-reducing valve must be installed.

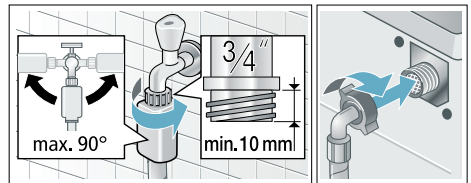
Connection

Connect the water supply hose to the tap (26.4 mm = 3/4") and to the appliance (not necessary for Aqua-Stop models as this is permanently installed):

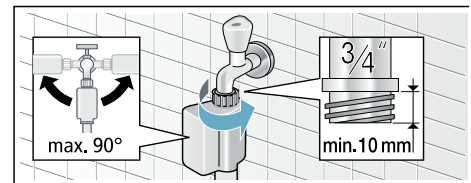
- Model: **Standard**



- Model: **Aqua-Secure**



- Model: **Aqua-Stop**



Note: Turn on the tap carefully, checking the leak tightness of the connection points. The screw connection is under mains water pressure.

Water outlet

Warning

Risk of scalding!

When washing at high temperatures, there is a risk of scalding if you come into contact with hot detergent solution (e.g. when draining hot detergent solution into a washbasin). Do not reach into the hot detergent solution.

Caution!

Water damage

When water is being pumped away, the outlet hose is under water pressure and may slip out of the wash basin or connection point.

Secure the outlet hose so that it cannot slip out.

Caution!

Damage to the appliance/fabrics

If the end of the outlet hose is immersed in the drained water, water may be sucked back into the appliance and may damage the appliance/fabrics. Make sure that:

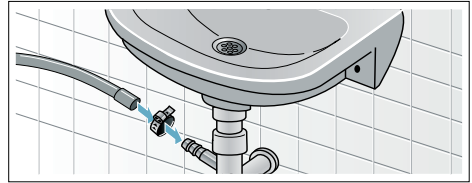
- The plug does not block drainage from the wash basin.
- The end of the drain hose is not immersed in the drained water.
- The water drains away quickly enough.

Note: Do not kink the water drain hose or stretch it lengthways.

Connection

■ Drainage into a siphon

The connection point must be secured using a hose clamp with a diameter of 24–40 mm (available from specialist dealers).

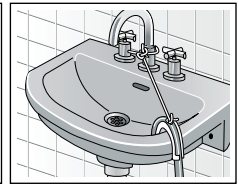
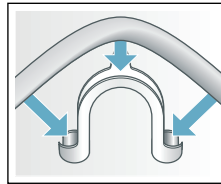


■ Drainage into a wash basin

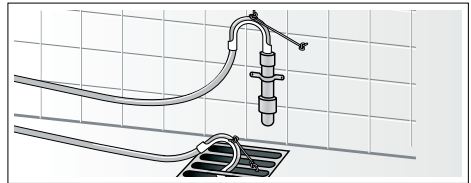
Secure the outlet hose so that it cannot slip out.

Elbow available from after-sales service:

Individual part number 00655300



■ Drainage into a plastic pipe with rubber sleeve or into a gully



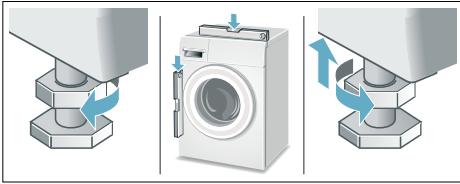
Levelling

Level the appliance using a spirit level.

Incorrect levelling may result in intense noise, vibrations and "wandering".

1. Loosen the lock nuts using a wrench, by turning it in a clockwise direction.
2. Check the alignment of the washing machine with a spirit level, and adjust it if necessary. Change the height by turning the appliance feet. All four appliance feet must stand firmly on the ground.
3. Tighten the lock nut against the housing.

In doing so, hold the foot tight and do not adjust its height.
The lock nuts on all four appliance feet must be screwed tightly against the housing.



Electrical connection

Warning **Danger of death!**

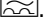
There is a risk of electric shock if you touch live components.

- Never touch or hold the mains plug with wet hands.
- Only pull out the mains cable by the plug and never by the cable, as this could damage it.
- Never unplug the mains plug during operation.

Observe the following information and ensure that:

Notes

- The mains voltage and voltage indicated on the washing machine (rating plate) are the same. The connected load and fuse required are specified on the rating plate.
- The washing machine is only connected to an alternating current via a properly installed earthed socket.
- The mains plug fits the socket.
- The cable cross-section is adequate.
- The earthing system is properly installed.

- The mains cable is only replaced by a qualified electrician (if this is necessary). Replacement mains cables are available from the after-sales service.
- No multiple plugs/couplings or extension cables are used.
- If an earth-leakage circuit breaker is used, only a type which displays this symbol is used: . Only this symbol guarantees compliance with the currently applicable regulations.
- The mains plug must be freely accessible at all times. If this is not possible, in order to comply with the relevant safety regulations, a switch (2-pole switch-off) must be built into the permanent installation in accordance with electrical installation regulations.
- The mains cable is not bent, squashed, modified, cut through, or in contact with heat sources.



Before washing for the first time

The washing machine has been thoroughly tested before leaving the factory. To remove any water that may be left over from testing, run the first wash cycle **without** any laundry.

Notes

- The washing machine **must be correctly installed and connected**. See → *Page 13* onwards
- Never use a damaged machine. Notify your after-sales service.

Preparatory work:

1. Check the machine.
2. Fill the  and  dispensers.
→ *Page 40*
3. Remove the protective film from the control panel.
4. Plug in the mains plug.
5. Turn on the tap.

Run the program without laundry:

1. Switch on the appliance.
2. Close the door (do not load any laundry).
3. Set the **Drum Clean 90 °C** program.
4. Open the detergent drawer.
5. Pour approx. 1 litre of water into the manual dosing compartment.
6. Pour all-purpose detergent into the manual dosing compartment.
Note: To prevent foaming, only use half the amount of detergent recommended by the detergent manufacturer. Do not use detergents intended for woollens or delicates.
7. Close the detergent drawer.
8. Start the program.
9. Switch off the appliance once the program has finished.

Your washing machine is now ready to use.

Transportation

E.g. when moving house

Preparatory work:

1. Turn off the tap.
2. Release the water pressure in the supply hose: → *"Filter in the water supply blocked"* on page 46
3. Disconnect the washing machine from the mains power supply.
4. Drain the remaining water: → *"The drain pump is blocked, emergency draining"* on page 45
5. Detach the hoses.
6. Empty the dispensers. → Page 41

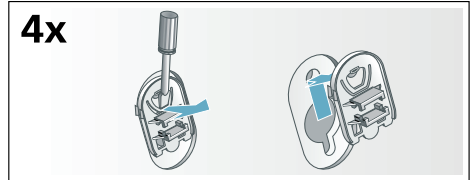
Caution!

Risk of damage to the appliance caused by detergent/fabric softener leaking from the dispensers

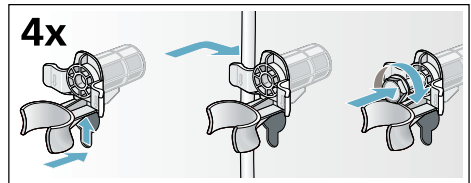
Leaking detergent/fabric softener can prevent the appliance from working correctly, e.g. due to damage to the electronics. Empty the dispensers before transporting the appliance.

Fitting the transportation securing means:

1. Remove the covers and keep them in a safe place.
If required, use a screwdriver.



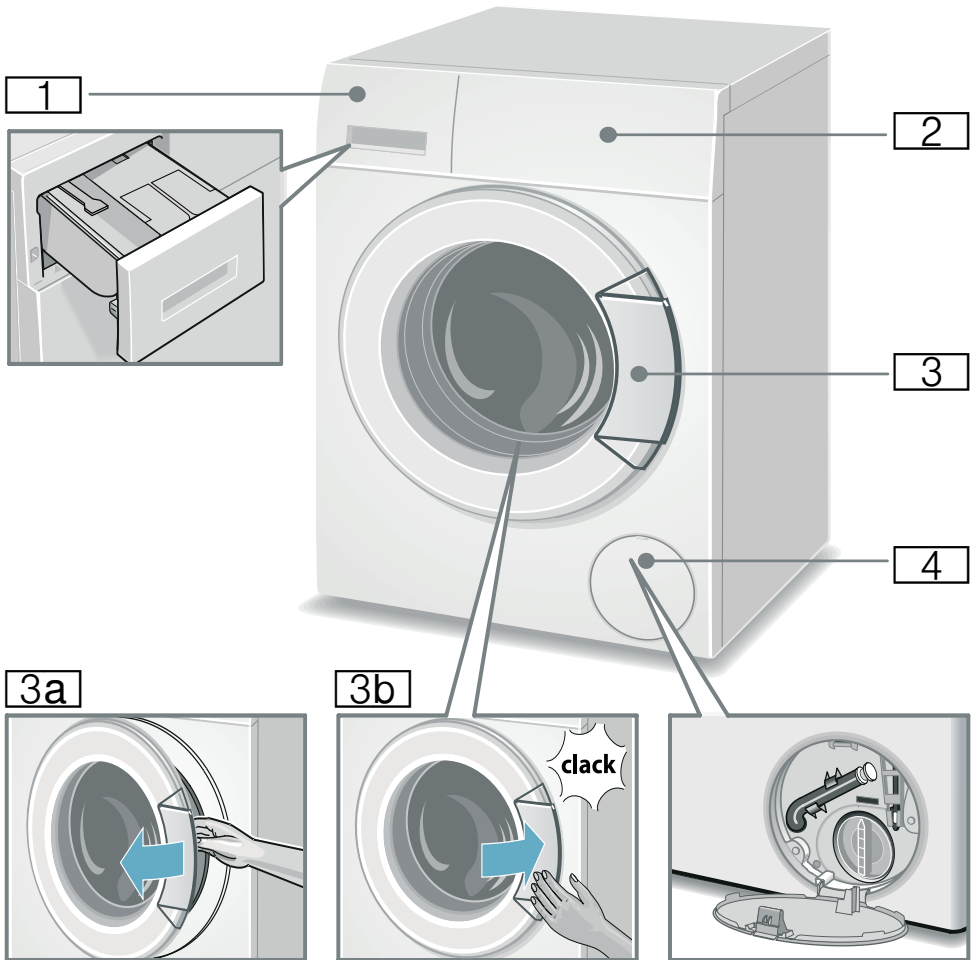
2. Insert all four sleeves.
Clip the mains cable securely in the holders. Insert the transportation securing bolts and tighten them with a wrench (WAF 13).

**Before switching on the appliance again:****Notes**

- The transit securing devices **must** be removed. → Page 14
- To prevent unused detergent from flowing straight into the drain during the next wash, pour approx. 1 litre of water into the manual dosing compartment, select the **Drain/Empty** program and start this program.

Familiarising yourself with your appliance

Washing machine



1 Detergent drawer → *Page 30*

2 Controls

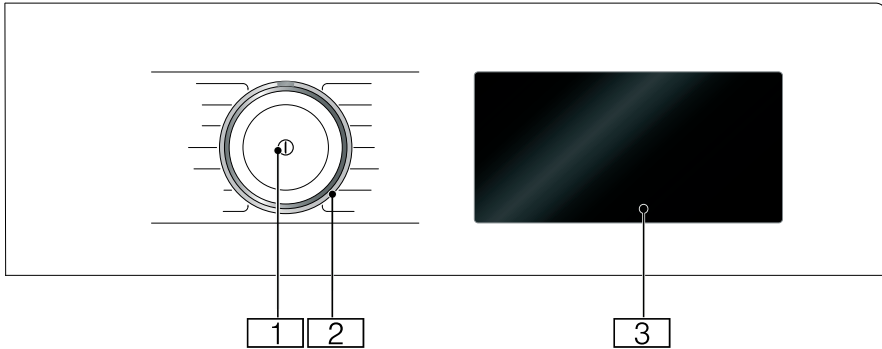
3 Washing machine door with handle

3a Opening the washing machine door

3b Closing the washing machine door

4 Service flap

Controls



1 Main switch

You can use the  button to switch the appliance on and off.

2 Programme selector

You can turn the programme selector in both directions (clockwise and anti-clockwise).

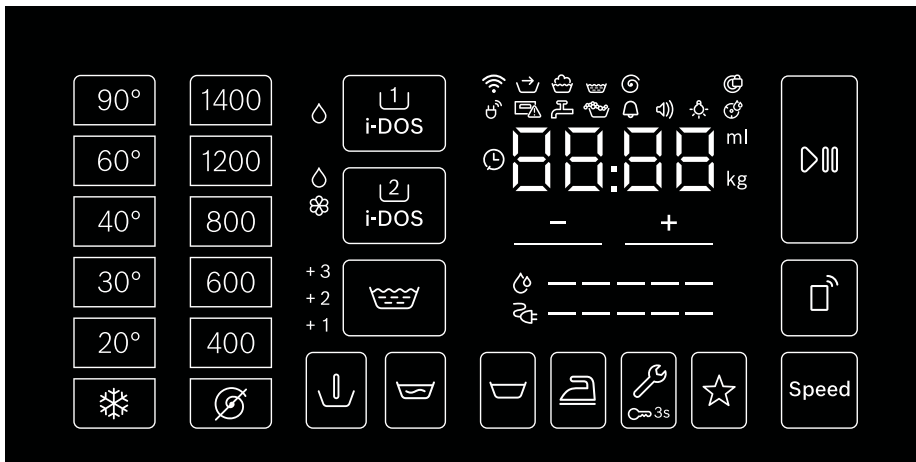
3 Touch display

This shows you the programme information and selection options for settings, and you can select the settings by touching the framed or underlined areas.

Content of the touch display

The display on this appliance responds to touch (touch display). You can activate settings by pressing lightly on the touch-sensitive buttons in boxes. The activated settings are illuminated particularly brightly to highlight them on the display. You can change or deactivate the activated settings by repeatedly pressing on the relevant buttons on the display.




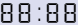
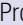
Caution!



Indicators, symbols and buttons on the control panel	Indicators and symbols for setting values	Setting
90°, 60° ◁, 40° ◁, 30°, 20°, *		Temperature in °C; * = cold
1400*, 1200, 800, 600, 400, ∅		Spin speed; ∅ = no spin
⏮ i-DOS ∅	∅	Automatically dispenses liquid detergent
⏮ i-DOS ⌘/∅	⌘/∅	Automatically dispenses fabric softener or liquid detergent; set the dispenser content → Page 39
🪣	+1, +2, +3, Off	Water Plus; + additional rinse cycles
Speed		Speed
👔		Easy-Iron
⏮		Prewash
🪣		Soaking
🪣		Rinse Stop = no final spin
🔧	🔔 🔊 🔦 🔄	Appliance settings: Notification signal, operating signal, touch display brightness, drum care reminder function
🔒 3s		Childlock/control panel lock
☆		Memory program
🏠		Remote start and Home Connect settings → Page 26
▶⏸		Start/Pause
+ , -	For changing the setting values	Note: Where there are multiple setting values, pressing and holding + , - will allow you to automatically scroll through all the setting values to the last value. Touching it again will allow you to change the setting values again.

* Maximum spin speed depends on the appliance

Other indicators and symbols	Information on:
🔌 -----	Energy consumption
💧 -----	Water consumption
⏮ 🪣 🪣 🪣	Program status: Prewash, Wash, Rinse, Spin, Rinse Stop
🔒	Door locked
🗑️	Detergent drawer open
🚰	Tap off/water pressure too low

Other indicators and symbols	Information on:
	Foam detected
	<ul style="list-style-type: none"> ■ Off: Wi-Fi is switched off and your appliance is not connected to your home network. ■ Flashing: Your appliance is trying to connect to your home network. ■ Continuously lit: Wi-Fi is switched on and your appliance is connected to your home network.
	Continuously lit: The appliance is connected to the smart energy system (Energy manager) (not available in every country)
	Program duration, e.g. 1:51; "Ready in" time, e.g.  8.5 h; recommended load, e.g. 8.0 kg; program status, e.g. End; basic dosage, e.g. 36 ml

Laundry

Prepare the laundry

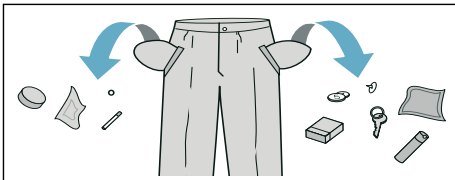
Caution!

Damage to the appliance/fabrics

Foreign objects (e.g. coins, paperclips, needles, nails) may damage the laundry or components in the washing machine.

You should therefore note the following tips when preparing your laundry:

- Empty any pockets.



- Look out for metal items (paperclips, etc.) and remove them.
- Wash delicates in a laundry bag (tights, underwired bras, etc.).
- Close any zips; button up any cover buttons.
- Brush sand out of pockets and collars.
- Remove curtain fittings or place curtains in a laundry bag.

Sorting laundry

Sort your laundry according to the care instructions and manufacturer's information on the care labels, depending on:

- Type of fabric/fibre
- Colour

Note: Laundry can discolour or not be cleaned correctly. Wash white and coloured items separately. Wash new coloured items separately the first time you wash them.







- Soiling

Wash laundry with the same level of soiling together.

Some examples of soiling levels can be found on → *Page 25*.


- **Light:** Do not prewash, select the **Speed** setting if necessary
- **Normal**
- **Heavy:** Load less laundry, select a program with prewash
- **Stains:** Remove/pretreat stains while they are fresh. Firstly, dab with soapy water; do not rub. Then wash the items of laundry with the appropriate program. Stubborn or dried-in stains can sometimes only be removed by washing several times.

- Symbols on the care labels
Note: The numbers in the symbols indicate the maximum washing temperature that may be used.

-  Suitable for normal washing process;
e.g. Cottons program
-  A gentle washing process is required;
e.g. Easy-Care program
-  An especially gentle washing process is required; e.g. Delicate/Silk program
-  Suitable for washing by hand; e.g.  Wool program
-  Do not machine wash.

Starching

Note: Laundry should not be treated with fabric softener.

1. Switch on the appliance.
2. Select the **Rinse** program.
3. Pour liquid starch into the manual dosing compartment in accordance with the manufacturer's instructions. If necessary, clean this compartment beforehand.
4. Touch the  button.

Dyeing/bleaching

Dye should only be used in normal household quantities. Salt may damage stainless steel. Always follow the dye manufacturer's instructions.

Do **not** use the washing machine to bleach clothes.

Detergent

Correct selection of detergent


The care label is crucial for selecting the correct detergent, temperature and treatment of the laundry. → See also www.sartex.ch

If you visit www.cleanright.eu, you will find further information on detergents, care products and cleaning agents for domestic use.

- **Standard detergent with optical brighteners**
Suitable for boil-washable white laundry made from linen or cotton
Programme: Cottons/
cold - max. 90 °C
- **Detergent for colours without bleach or optical brighteners**
Suitable for coloured laundry made from linen or cotton
Programme: Cottons/
cold - max. 60 °C
- **Detergent for colours/delicates without optical brighteners**
Suitable for coloured laundry made from easy-care fibres, synthetic fibres
Programme: Easy-Care/
cold - max. 60 °C
- **Detergent for delicates**
Suitable for delicate, fine fabrics, silk or viscose
Programme: Delicate/Silk/
cold - max. 40 °C
- **Detergent for woollens**
Suitable for wool
Wool programme/
cold - max. 40 °C

Saving energy and detergent

For light and normal soiling, you can save energy (lower washing temperature) and detergent.

Saving	Soiling/note
<p>Reduced temperature and detergent quantity as per the recommended dosage</p>  <p>Temperature as per the care label and detergent quantity as per the recommended dosage for heavy soiling</p>	<p>Light No visible dirt or stains. Clothing has taken on some body odour, e.g.:</p> <ul style="list-style-type: none"> ■ Light summer/sports clothing (worn for a few hours) ■ T-shirts, shirts, blouses (worn for up to one day) ■ Guest bed linen and hand towels (used for one day)
	<p>Normal Visible dirt or a few light stains, e.g.:</p> <ul style="list-style-type: none"> ■ T-shirts, shirts, blouses (sweat soaked, worn a few times) ■ Towels, bedding (used for up to one week)
	<p>Heavy Dirt and/or stains clearly visible, e.g. tea towels, baby items, work clothing</p>

Note: When measuring the amount of all detergents/additives/care products and cleaning agents, please always check the manufacturer's instructions and information. → *Page 30*

P+ Programme default settings

The programme default settings are displayed and can be changed in the touch display after the programme is selected.

You can find an overview of all possible program settings on the supplementary sheet for the installation and operating instructions.

Temperature

Depending on what stage the programme is in, you can change the set temperature before and during the programme.

The maximum temperature that can be set depends on the programme that has been selected.

Spin speed

Depending on how far through the program the appliance is, you can change the spin speed (in rpm – revolutions per minute) before and during the program.

Setting Ⓞ: No spin; the water is simply pumped out. The laundry stays wet inside the drum, e.g. for items that are not to be spun.

The maximum speed that can be set depends on the model and the program that has been selected.

Ready in time



After selecting a programme, the programme duration is displayed, e.g. **1:51** (in h:min (hours:minutes)).

Before the programme starts, you can move the time at which the programme should be finished backwards, in increments of 30 minutes and up to a maximum of 24 h (h=hour).

After the programme starts, the selected time, e.g. **8.5 h** is displayed and counted down until the washing programme starts. The duration of the programme is then displayed.

Note: The programme duration is automatically adjusted when the programme is running. Changes to the programme default settings or programme settings, foam detection function, unbalanced load detection, the load or soiling may also change the programme duration.

After the programme starts, and while the selected time is counting down, you can change this as follows:

1. Touch the control panel .
2. Touch **+** or **-** to change the time.
3. And touch  again.

After starting the programme, while the programme is running, you can add or remove laundry if necessary.

→ Page 31

Memory programme



You can save a selected programme with your favourite settings here.

To store:

1. Switch on the appliance.
2. Select a programme.
3. Change the settings and/or select additional settings.
4. Press and hold ☆ on the control panel for approx. three seconds.


The programme is saved if all of the settings flash briefly.

To use the saved programme, touch ☆ briefly after you switch on the appliance.

To change the saved programme, press and hold ☆ again for approx. three seconds after selecting the new settings.

Remote start

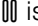



Pressing **Remote start**  allows you to start the appliance remotely via the Home Connect app or to call up the Home Connect settings.

Enabling the appliance to be started remotely via the Home Connect app:

Note: Remote start can only be activated if the appliance door and the detergent drawer are closed and the appliance is connected to your home network.

- Briefly press **Remote start**.

Note: Remote start will be deactivated for safety reasons in the following circumstances:
When the door is opened,
When the detergent drawer is opened,
In the event of a power failure,
When a programme has come to an end,
When Start/Pause  is pressed on the appliance,
When **Remote start** is pressed briefly again,
When  is pressed to switch off the appliance.

Calling up Home Connect settings:

- Press and hold **Remote start** for at least 3 seconds.

P+ Additional programme settings

You can find an overview of all of the additional settings that can be selected depending on the programme on the printed supplement to the installation and operating instructions.

Water Plus



Adjustment values:

+1	+ 1 rinse
+2	+ 2 rinses
+3	+ 3 rinses
off	Setting deselected

Higher water level and additional rinse cycles depending on the programme, longer programme duration for particularly sensitive skin and/or for areas with very soft water.

The number of rinse cycles that the appliance actually runs depends on the number that is set as a basic setting for the program in question.

Speed

Speed

Washing in a shorter time while achieving a washing result that is consistent with, but uses more energy than, the selected programme, without the Speed setting.

Note: Do not exceed the maximum load.

Easy-Iron



Reduces creasing thanks to a special spin sequence followed by fluffing and reduced spin speed.

Note: The washing's residual moisture is increased.

Prewash



For heavily soiled laundry.

Notes

- If automatic dosing (i-DOS) is selected, detergent will be dispensed automatically for the prewash and main wash cycles.
- If manual dosing is selected, you will need to allocate detergent for the prewash and main wash cycles. Add detergent for the prewash to the drum. Pour washing powder for the main wash into the manual dosing compartment.

Soaking

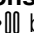




Before the main wash cycle starts, the laundry remains in the water for longer to remove heavy soiling.

To be used for particularly stubborn soiling.

Use i-DOS to dispense the detergent or pour it into the manual dosing compartment in accordance with the manufacturer's instructions.

Notes

- Load laundry of the same colour together.
- If your washing machine does not have this option, you can soak your laundry as follows:
 1. Select i-DOS or pour the detergent into the manual dosing compartment in accordance with the manufacturer's instructions.
 2. Select the **Cottons 30 °C** program and press the  button.

3. Press the  button after approx. 10 minutes. The laundry will soak in the water.
4. Leave the laundry to soak for as long as required, then either press the  button again to resume the program or change the program.

Note: No additional detergent is required as the water used for soaking will be reused for washing.

Rinse hold

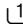

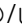




If final spinning is not selected, the laundry will remain in the water after the final rinse.

You can select "Rinse Stop" to prevent creasing if the laundry will not be taken out of the washing machine immediately after the programme has ended.


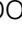
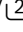
To resume/end the programme
→ Page 31

i-DOS

 i-DOS  i-DOS 

Your appliance has an intelligent dosing system for liquid detergent () and fabric softener ().

The optimum quantities of liquid detergent and fabric softener are dispensed automatically.

You can press  i-DOS  i-DOS  to activate or deactivate automatic dosing and set the basic dosages.

→ "Intelligent dosing system"
on page 38



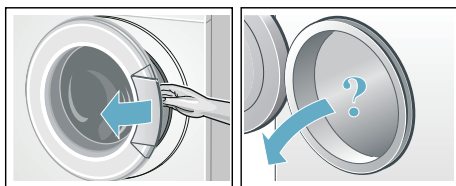
Operating the appliance

Preparing the washing machine


Note: The washing machine **must be correctly installed and connected.**

From → Page 13


1. Connect the mains plug.
2. Turn on the water tap.
3. Open the door.
4. Check that the drum is completely drained. Drain if necessary.



Switching on the appliance/ selecting a programme

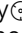
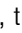
Press the  button. The appliance is switched on.

The **Cottons** programme set at the factory is then always displayed.

The current settings and programme information light up at full brightness and the display  flashes.

The settings that can be selected light up at half brightness.

Notes

- Temporary flashing of the display  informs you to run the programme **Drum Clean** or any other programme soon at a washing temperature of at least 60 °C.
- If the  3s display flashes, the childproof lock is active. You must deactivate this first before you can change settings or start the programme. → Page 30

In appliances with a **drum light**:


The drum is lit after switching on the appliance, after opening and closing the door and after starting a programme. The light switches off automatically.

You can:

- Use this programme and load laundry. → *Page 29*
- Or select another programme. You can find an overview of all programmes on the printed supplement for the installation and operating instructions.
- Or change the programme default settings. → *Page 29*
- And/or select additional programme settings. → *Page 29*

Calling up additional programmes

You can call up additional programmes via the Home Connect app:

1. Connect the appliance to your home network and to the Home Connect app. → *Page 32*
 2. Select the **Additional programs** programme.
PPP will appear on the display.
Tip: You can also select programmes directly via the Home Connect app.
 3. Select the programme you want to call up in the Home Connect app. The settings for the selected programme will appear on the display.
 4. Adjust the programme settings if necessary and press Start/Pause .
- Tip:** If you press **Remote start** briefly on the appliance beforehand, you will also have the option of starting the programme via the Home Connect app.

Change the programme default settings

To change the current settings, touch the button you require on the control panel and the relevant indicator will switch to full brightness.

You can change Finished in-time by touching + or -.

Programme default settings
→ *Page 25*

Select additional programme settings

By selecting additional settings, you can better adapt the washing process to your items of laundry.

To do this, touch the required control panel; the relevant display switches to full brightness.

Additional programme settings
→ *Page 27*

Placing laundry into the drum

Warning

Danger of death!

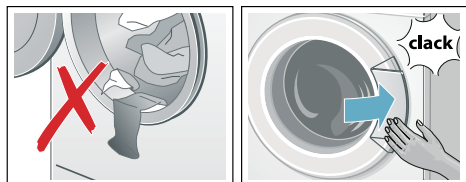
Items of laundry pretreated with cleaning agents that contain solvents, e.g. stain remover/cleaning solvent, may cause an explosion after being loaded into the washing machine. Hand-rinse these items of laundry thoroughly beforehand.

Notes

- Mix items of laundry of varying sizes. Laundry items of different sizes distribute themselves better during the spin cycle. Individual laundry items may cause an unbalanced load.
- Observe the maximum specified load. Overfilling adversely affects the washing result and promotes creasing.

en Operating the appliance

1. Unfold presorted laundry items and place them in the drum.
2. Make sure that no items of laundry are trapped between the door and the rubber seal, and close the door.



Measure and add detergent and care products

In most programmes, your appliance can dose your detergent and fabric softener automatically. Automatic dosing is activated at the factory for all the designated programmes and it can be adjusted to suit your requirements.


→ "Automatic dosing" on page 38


For programmes in which automatic dosing is not possible or not desired (in which case, intelligent dosing is deactivated), you can add suitable detergent to the compartment in the detergent drawer for manual dosing.

→ "Manual dosing" on page 41

Start the programme

Touch  on the control panel.

The programme starts and the  symbol lights up.

The door is locked and the corresponding  symbol lights up.

The drum rotates and load detection takes place (takes up to two minutes).


The current programme information is displayed during the programme:

- Finished in-time or, after the washing programme has started, the programme duration

- And the programme progress indicators light up.
→ Page 21

Information on the following programme steps and settings, which can be changed while the programme is in progress, lights up at half brightness.

Note: Foam detection

If the  symbol also lights up, the washing machine has detected too much foam during the washing programme and automatically activated additional rinse cycles to remove the foam.


Add less detergent the next time you run a wash cycle with the same load.

If you want to lock the programme to prevent the settings from being changed inadvertently, you can select the childproof lock as follows.

Childlock/operation lock

 3s

You can lock the washing machine to prevent the functions you have set from being changed inadvertently in the control panel.

To **activate**/deactivate the **childproof lock**, touch and hold the control panel  3s for approx. three seconds. The display switches to full brightness.

If you turn the programme selector or touch the control panel while the childproof lock is active, the  3s indicator flashes briefly and a signal sounds. The programme runs through to the end unchanged.

Notes

- The childproof lock can be activated regardless of the appliance's status.
- The childproof lock remains active, even once the washing machine has been switched off.


- If the appliance is switched off while the programme is running and the childproof lock has been activated, the programme will resume when the appliance is switched back on.


Adding laundry

After starting the programme, you can add or remove laundry if necessary.

To do this, touch the control panel .

The indicator flashes. The machine is paused and checks whether a top-up is possible.

If the display  goes out, a top-up is possible. The door is then unlocked and can be opened.

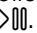
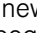
To continue the programme. touch  again. The programme continues automatically.

Notes

- Do not leave the door open for too long when adding laundry as water from the laundry may leak out.
- For safety reasons, the door remains locked when the water level or temperature is high, or while the drum is turning, and it is not possible to add laundry during this time. Follow the information on the display panel.
- The load display is not active during reloading.

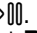

Changing the programme

If you have started the wrong programme by mistake, you can change the programme as follows:



1. Touch the control panel .
2. Select another programme.
3. And touch  again. The new program starts from the beginning.

Cancel the programme


For programs at high temperature:

1. Touch the control panel .
2. To cool the laundry: Select **Rinse**.
3. And touch  again.

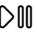


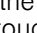
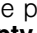
For programmes at low temperatures:

1. Touch .
2. Select **Spin** or **Drain/Empty**.
3. And touch  again.

Programme end during rinse hold


The  indicator flashes in the display panel, and the preset spin speed and remaining programme length are displayed for the selected programme.

Continue the programme by:

- Touching  on the control panel or
- Changing the spin speed and then touching  or
- Selecting the Easy-Iron  setting and then touching  or
- Turning the programme selector to **Drain/Empty** and then touching .

Programme end

End lights up in the display panel and the  and  displays are off.

Note: If the  display flashes, this informs you to run the **Drum Clean** programme or any other programme at a washing temperature of at least 60 °C.

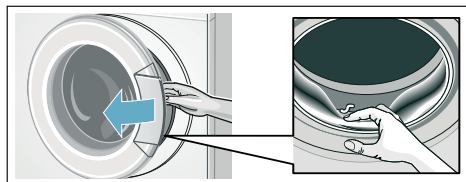
Removing laundry/switching off the appliance

1. Open the loading door and remove the laundry.
2. Switch off the appliance.
3. Turn off the tap.

Note: Not required for AquaStop models.

Notes

- Do not leave any items of laundry in the drum. They may shrink in the next wash or discolour another item.
- Remove any foreign objects from the drum and the rubber gasket – risk of rusting.
- Wipe the rubber gasket dry.



- Leave the loading door and detergent drawer open so that any remaining water can evaporate.
- Always wait until the programme ends; otherwise the appliance could still be locked. Then switch the appliance on and wait for it to unlock.

Home Connect

This appliance is Wi-Fi-capable and can be remotely controlled using a mobile device.

You can use the Home Connect app to do the following on your appliance from your mobile device:

- Set up programs and launch them.
- Adjust, activate and deactivate program settings.
- Query the status of programs.
- Adjust, activate and deactivate appliance settings.
- Switch off the appliance.

Before you can use the Home Connect functions, you will need to carry out the following steps:

1. Install the Home Connect app on your mobile device.
2. Register in the Home Connect app.
3. Connect your appliance to your home network automatically **or** manually (you only need to do this the first time).
4. Connect your appliance to the Home Connect app.

You can find information about the app on our Home Connect website www.home-connect.com

Home Connect services are not available in every country. The availability of the Home Connect function depends on the availability of Home Connect services in your country. You can find information on this at: www.home-connect.com

Notes

- Please observe the safety precautions in this instruction manual and make sure that these are complied with even when operating the appliance via the Home Connect app while you are away from home. You must also follow the instructions in the Home Connect app.
- You cannot use the Home Connect app to make changes while the controls on the appliance are being operated. However, you can use the Home Connect app to see any adjustments made directly on the appliance itself.

Calling up the Home Connect menu

In the Home Connect menu, you can create and view network connections, reset network settings, activate/deactivate Wi-Fi and find other Home Connect functions.

1. Switch on the appliance.
2. Press and hold **Remote start**  for at least 3 seconds.

FLC appears in the display.

You are now in the Home Connect menu.

Note: Briefly press **Remote start**  to exit the Home Connect menu.

Connecting to the home network and the Home Connect app

Connect your appliance to the home network **automatically** or **manually** (you only need to do this the first time).

Notes

- If your home network router has a WPS function, you can connect the appliance to your home network automatically.
- If your home network router does not have a WPS function, you need to connect the appliance to your home network manually.

You must then connect to the Home Connect app.


Note: To connect your appliance to the home network, **Wi-Fi** must be activated on the appliance. **Wi-Fi** is deactivated on the appliance by default and is activated automatically when you connect your appliance to your home network.

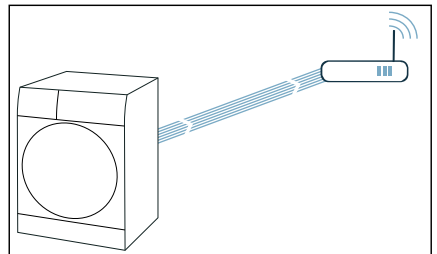
Connecting to your home network automatically

Step 2.1


Ensure that you are in the Home Connect menu. → *Page 33*

1. Press .

The appliance now attempts to connect to your home network.  flashes in the display.



2. Activate the WPS function on your home network router within the next 2 minutes.

If the appliance has connected to your home network successfully, **CON** and  appear in the display and light up continuously.

Note: If you are not able to establish a connection, check whether your appliance is within range of your home network. Try connecting automatically again or connect your appliance manually.

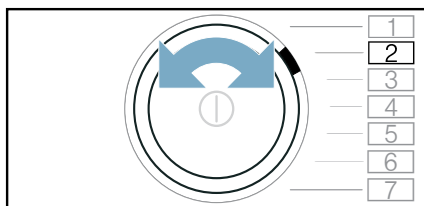
Connecting to your home network manually

Step 2.2


Ensure that you are in the Home Connect menu. → Page 33

Make sure that you have opened the Home Connect app and are logged in.

1. Set the programme to position 2.

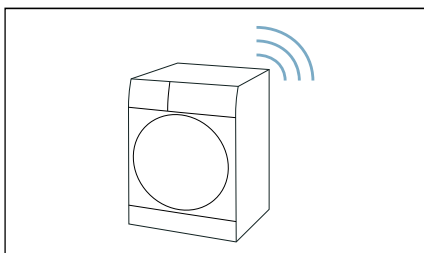


SRP (connect manually) appears in the display.

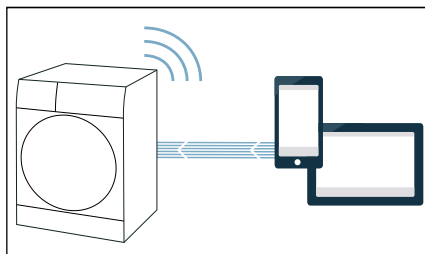
2. Press .

The appliance now sets up its own Wi-Fi network with the name (SSID)


HomeConnect.



3. Call up the Wi-Fi setting on the mobile device.
4. Connect the mobile device to the **Home Connect** Wi-Fi network and enter the password (key) **HomeConnect.**
Your mobile device now connects to the appliance. The connection process may take up to 60 seconds.



5. Once you have connected successfully, open the Home Connect app on your mobile device and carry out the steps in the app.
6. In the Home Connect app, enter the network name (SSID) and password (key) for **your home network.**
7. Carry out the last steps in the Home Connect app to connect your appliance.

If the appliance has connected to your home network successfully, *con* and  appear in the display and light up continuously.

Note: If you are not able to establish a connection, check whether your appliance is within range of your home network. Try connecting manually again.

Connecting to the Home Connect app

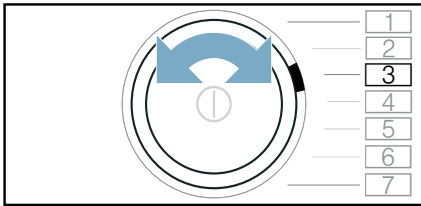
Step 3

If your appliance is connected to your home network, you can connect it to the Home Connect app.

Ensure that you are in the Home Connect menu. → *Page 33*

Make sure that you have opened the Home Connect app and are logged in.

1. Set the programme to position 3.



APP (connect to app) appears in the display.

2. Press **Wi-Fi**.

The appliance now attempts to connect to the Home Connect app.

3. Once your appliance is displayed in the app, carry out the last steps in the Home Connect app.

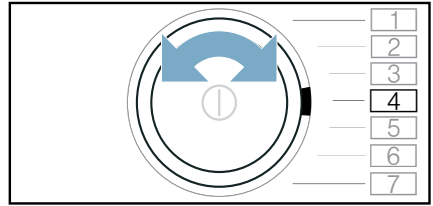
Note: If you were not able to establish a connection, check whether your mobile end device is within range of your home network or is connected to this. Try connecting to the Home Connect app again.

Activating/deactivating Wi-Fi

If your appliance is already connected to your home network, you can activate or deactivate **Wi-Fi** on your appliance.

Ensure that you are in the Home Connect menu. → *Page 33*

1. Set the programme to position 4.



Wi-Fi appears in the display.

2. Press **Wi-Fi**.

If **on** appears in the display, Wi-Fi is activated on the appliance. If **off** appears in the display, Wi-Fi is deactivated on the appliance.

Notes

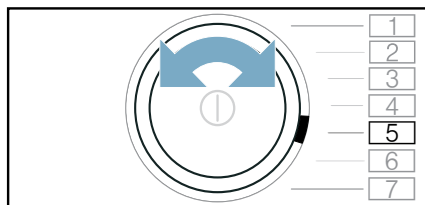
- If you connect to your home network, Wi-Fi is activated automatically.
- If Wi-Fi is activated, the appliance will not switch itself off automatically.
- If Wi-Fi is switched off on the appliance, it is not possible to use the Home Connect app to start or control the appliance remotely.
- If Wi-Fi is switched off and your appliance was previously connected to your home network, this connection will be re-established automatically when Wi-Fi is switched back on.
- If you activate this function, the energy consumption increases in comparison to the values specified in the consumption value table.

Resetting your network settings

You can reset all of the network settings.

Ensure that you are in the Home Connect menu. → Page 33

1. Set the programme to position 5.



rES (reset network settings) appears in the display.

2. Press **D00**.
YES appears in the display.
3. Press **D00**.

Note: If you want to operate your appliance via the Home Connect app again, you will need to reconnect it to your home network and to the Home Connect app.

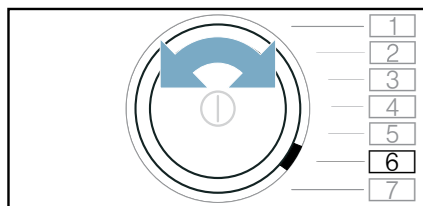
Updating the software

You can update the Home Connect software on your appliance. As soon as a new software update is available, a note appears in the display: **UPd**

Install the update directly via the **message in the display** or **manually** as follows:

Ensure that you are in the Home Connect menu. → Page 33

1. Set the programme to position 6.



UPd (software update) appears in the display. Start/Pause **D00** flashes if a software update is available.

2. Press **D00**.
YES appears in the display.
3. Press **D00**.

Note: The software update may take several minutes. Do not switch the appliance off while updates are being installed.

Remote diagnostics

If a fault occurs, the after-sales service can use remote diagnostics to access your appliance.

Contact the after-sales service, making sure that your appliance is connected to the Home Connect server and checking that the remote diagnostics service is available in your country.

Note: For more information and to check whether the remote diagnostics service is available in your country, please visit the Help & Support area of the Home Connect website for your country: www.home-connect.com

Information on data protection

When your appliance is connected for the first time to a Wi-Fi network, which is connected to the Internet, your appliance transmits the following categories of data to the Home Connect server (initial registration):

- Unique appliance identification (consisting of appliance codes as well as the MAC address of the installed Wi-Fi communication module).
- Security certificate of the Wi-Fi communication module (to ensure a secure data connection).
- The current software and hardware version of your household appliance.
- Status of any previous resetting to factory settings.

This initial registration prepares the Home Connect functions for use and is only required when you want to use these Home Connect functions for the first time.

Note: Ensure that the Home Connect functions can be used only in conjunction with the Home Connect app. Information on data protection can be accessed in the Home Connect app.


Declaration of Conformity

Robert Bosch Hausgeräte GmbH hereby declares that the appliance with Home Connect functionality meets the basic requirements and other relevant provisions of the Directive 2014/53/EU.

A detailed RED Declaration of Conformity can be found online at www.bosch-home.com among the additional documents on the product page for your appliance.



2.4 GHz band: max. 100 mW
5 GHz band: max. 100 mW

	BE	BG	CZ	DK	DE
	EE	IE	EL	ES	FR
	HR	IT	CY	LV	LT
	LU	HU	MT	NL	AT
	PL	PT	RO	SI	SK
	FI	SE	UK	NO	CH
	TR				
5 GHz Wi-Fi: for indoor use only					

i-DOS

Intelligent dosing system

Familiarising yourself with i-DOS

i-DOS Intelligent dosing system

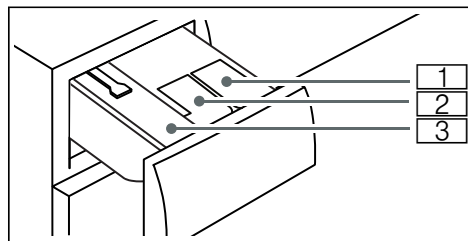
Your appliance has an intelligent dosing system for liquid detergent and fabric softener.

The optimum quantities of liquid detergent and fabric softener are dispensed automatically depending on the programme and settings.

Automatic dosing is activated at the factory for all the designated programmes and it can be adjusted to suit your requirements. The settings are saved when the appliance is switched off.

For programmes in which automatic dosing is not possible, you can add suitable detergent to the compartment in the detergent drawer for manual dosing.

i-DOS Detergent drawer



- 1 ∅ dispenser for liquid detergent
- 2 ⌘/∅ dispenser for fabric softener or liquid detergent; set the dispenser content → Page 39
- 3 Manual dosing compartment

Before setting up i-DOS

Follow the manufacturer's instructions when choosing your detergent and care product. We recommend using easy-pour, all-purpose, universal and colour liquid detergents for all machine-washable, coloured items made of cotton or synthetic fabrics.

Notes

- Only use easy-pour liquid products that the manufacturer recommends adding to the detergent drawer.
- When cleaning the i-DOS detergent drawer, empty the dispenser completely and clean it. → Page 41
- Do not mix detergent and fabric softener.
- Do not use products containing solvents, caustic agents or volatile substances (e.g. bleach).
- Do not use products that have expired or are highly congealed.

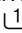
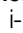



Automatic dosing

The automatic dosage operates as follows:

1. Switch on the appliance.
A function test of the i-DOS pump unit takes place, and this can be detected by a brief noise in the i-DOS detergent drawer.
2. Select a programme with i-DOS settings.
When the i-DOS setting for detergent and fabric softener is active, the corresponding symbols light up in the display.
3. Start the programme.
The drum rotates and, depending on the programme selected, load detection takes place (takes up to 2 minutes). Depending on the load detected, the required quantities of detergent and fabric softener (in the last wash cycle) are then dosed, which can be detected by a pump noise.

Automatic dosing can be activated or deactivated for each of the designated wash programmes separately.

Automatic dosing can also be activated or deactivated once the programme has started, although this depends on which stage the programme is in.




To activate/deactivate the function, press  i-DOS  and/or  i-DOS / briefly. The setting will be saved until the next time it is changed.

Tip: In addition to automatic dosing, you can also add further laundry care products such as stain remover, starch, softener or bleach to the manual dosing compartment. To prevent overdosing or foam build-up, do not add more detergent to the manual dosing compartment.












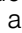
Notes

- To protect your laundry, automatic dosing can only be used with certain programmes.
- **Programs with prewash*:** If automatic dosing is selected, detergent will be dispensed automatically for the prewash and main wash cycles.

i-DOS Setting the content of the / dispenser

Default setting for the dispenser content /: Fabric softener ().
Alternatively, you can also use this dispenser for a second liquid detergent.

Set the dispenser content as follows:

1. Press  i-DOS /.
 lights up in the display.
2. If you want to change the dispenser, press  i-DOS / again.
The display changes from  to .
3. To exit setting mode, press and hold  i-DOS / for approx. 3 seconds or wait briefly.

* Depending on the model

Note: If both dispensers are filled with liquid detergent, only the dispenser that was activated by choosing the i-DOS button is used during the wash cycle.

i-DOS Setting the dosage

The basic dosage is the recommended dosage for a typical load of household laundry weighing 4.5 kg. The quantity of detergent and care product actually dispensed is calculated using the basic dosage and the amount of laundry, which is detected automatically.

The basic dosages for liquid detergent and fabric softener are set at the factory. You can individually adjust the basic dosages for each dispenser.

Check whether the preset basic dosages follow the manufacturer's recommendations in terms of:

- A 4.5 kg load
- For liquid detergent – the **normal** degree of soiling and the relevant water hardness
- For fabric softener – the **medium** softness

Refer to the packaging label on your liquid detergent/fabric softener or ask the manufacturer directly for this information.

Below is an example of detergent dosages on a packaging label:

For standard load 4 - 5 kg		Level of soiling		
		light	normal	heavy
Water hardness	soft/ medium	40 ml	55 ml	80 ml
	hard/ very hard	55 ml	80 ml	105 ml
In this example, a basic dosage of 55 ml must be set for a medium water hardness.				

If necessary, adjust the basic dosages to the recommended load for the liquid

en Intelligent dosing system

detergent/care product you are using, the water hardness and/or the degree of soiling.

Adjusting the basic dosage

1. Press and hold \cup i-DOS \circ and/or \cup i-DOS \otimes/\circ for approx. 3 seconds.
The basic dosage setting will be displayed.
2. Change the setting using: $+/-$
3. To exit setting mode, press and hold \cup i-DOS \circ and/or \cup i-DOS \otimes/\circ for approx. 3 seconds or wait approx. 10 seconds.

Notes

- The changes are applied to all programmes in which dosing is possible.
- The changes are saved until the next time they are changed and are retained even after the appliance has been switched off.

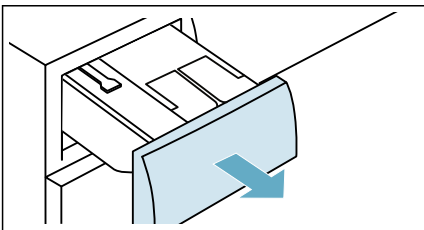
Filling the dispensers

Notes

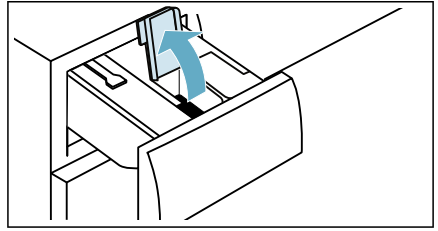
- See the instructions in chapter \rightarrow "Before setting up i-DOS" on page 38
- If \circ or \otimes flashes, fill the relevant dispenser. \rightarrow Page 38

Fill the dispensers as follows:

1. Pull out the detergent drawer.



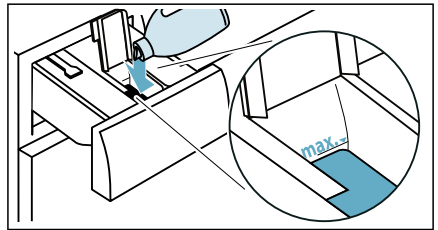
2. Open the dispenser lids.



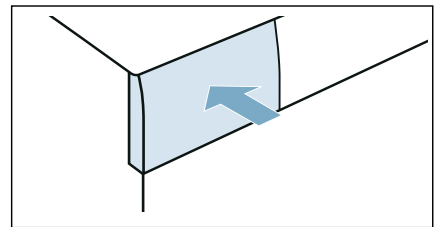
3. Pour liquid detergent and fabric softener into the relevant dispensers.

Notes

- Do not fill the dispensers above the **max.** mark.
- Follow the instructions in chapters \rightarrow "i-DOS Setting the dosage" on page 39 and \rightarrow "i-DOS Setting the content of the \otimes/\circ dispenser" on page 39.



4. Close the dispenser lids.
Note: To prevent the detergent drying out or drying up, do not leave the dispenser lids open for a long period of time.
5. Push in the detergent drawer.



Note: When refilling the dispensers, always use the same type of liquid detergent or fabric softener.

Do not mix different types of liquid detergent or fabric softener, as this can form lumps that may block the i-DOS pump unit.

If you switch to a different liquid detergent or fabric softener (type, manufacturer, etc.), empty the relevant dispenser completely and clean it beforehand. → *Page 41*

Manual dosing

For programmes in which automatic dosing is not possible or desirable, or in which it has been deactivated, you will need to add detergent to the manual dosing compartment.

The detergent and/or care product in this compartment is dispensed when the wash cycle starts. Do not add fabric softener or any other products that should not be used until later in the wash cycle (e.g. during rinsing).

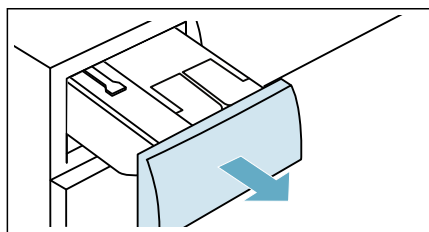
Note: Programmes with prewash*:

When automatic dosing is deactivated, place the detergent for the prewash in the drum. Pour washing powder for the main wash into the manual dosing compartment.

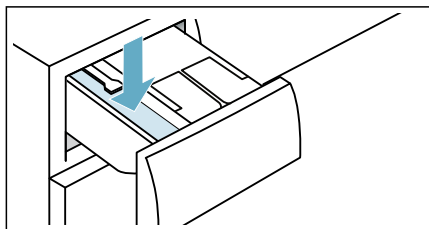
Dosing and adding detergent

Note: Find out the optimum dosage for detergent and care product.

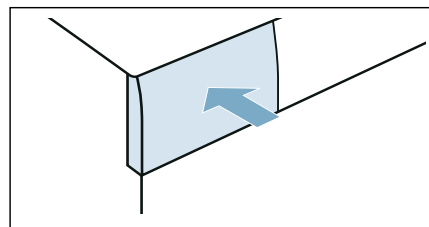
1. Pull out the detergent drawer.



2. Pour laundry detergent and/or care product into the manual dosing compartment.



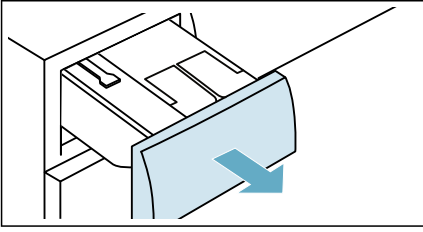
3. Push in the detergent drawer.



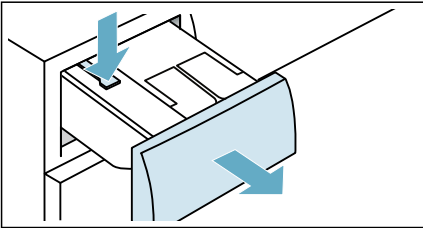
Emptying the i-DOS detergent drawer, cleaning the i-DOS detergent drawer and its housing, cleaning the i-DOS pump unit

1. Switch off the appliance.
2. Pull out the detergent drawer.

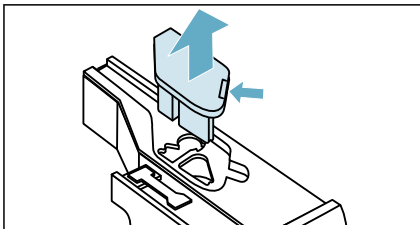
* Depending on the model



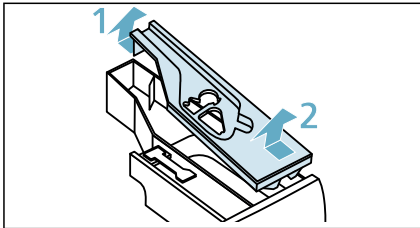
3. Press down the insert and remove the drawer completely.



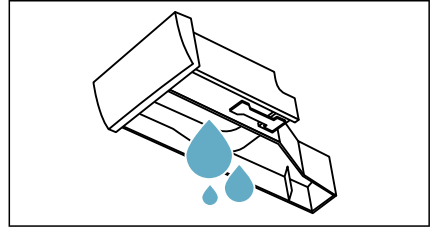
4. Press the pump unit insert and remove it.



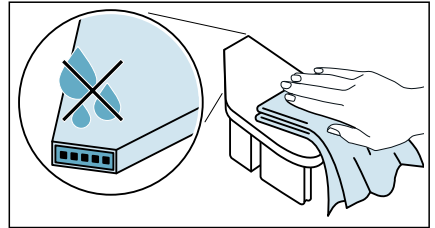
5. Unclip the rear detergent drawer lid and remove it.



6. Empty the detergent drawer.



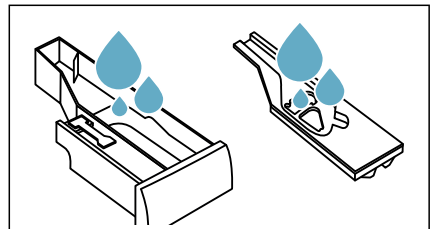
7. Clean the pump unit with a damp cloth.



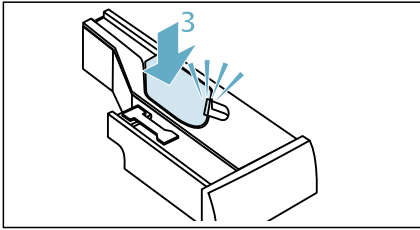
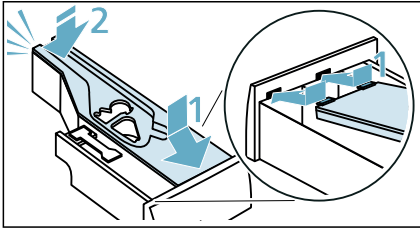
Caution!

The pump unit contains electrical components. These may be damaged if they come into contact with water.

- Do not clean the pump unit in the dishwasher and do not immerse it in water.
 - Protect the rear plug against water, detergent and fabric softener residue.
8. Clean the drawer, inside surface and lids with a soft, damp cloth or a hand shower.



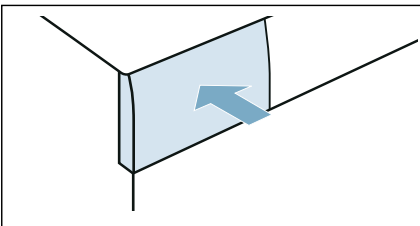
9. Dry the drawer, lids and pump unit and put them back together.



10. Clean the inside of the detergent drawer housing.



11. Push in the detergent drawer.





Appliance settings

You can change the following settings in the control and display panel:

- The volume of the information signal (e.g. at the end of the programme),
- The volume of the operating signals,
- The brightness of the operating and display field,
- Select/deselect the memory function for drum care.

You will need to activate the setting mode in order to change these settings.

Activating the setting mode

1. Switch on the appliance. The settings for the current programme are displayed.
2. Touch the control panel . The setting mode is activated and the displays for the information signals  and the preset volume light up.

You can now change the settings:



Changing the signal volume

To do this, touch **+** or **-** on the control panel until the required adjustment value for the volume of the **information signals** appears:

Adjustment values:

- | | |
|---|-----------|
| 0 | off |
| 1 | quiet |
| 2 | Medium |
| 3 | loud |
| 4 | very loud |



Exit setting mode or:

Touch  again. The display for the **operating signals**  and the preset volume light up.

Touch **+** or **-** to change the adjustment value (as above).

Exit setting mode or:

Changing the brightness of the touch display

Touch  again. The display for the touch display's brightness  and the preset brightness light up.



Change the adjustment value by touching + or -:

Adjustment values:

- 1 Not very bright
- 2 Normal level of brightness
- 3 Bright
- 4 Very bright

Exit setting mode or:


Select/deselect the memory function for drum care

Touch  again. The display for the memory function for cleaning the drum  lights up.

Touch + or - to select (on) or deselect (off) the memory function.

Exiting setting mode

To exit and save the settings:

- Wait for approx. 15 minutes or
- Touch  one last time or
- Switch off the appliance. The selected settings will take effect the next time the washing machine is switched on.

Sensors

Automatic load sensing

The automatic load sensing function adapts the water consumption ideally to each programme depending on the type of fabric and the load.

Unbalanced load detection system

The automatic unbalanced load detection system detects imbalances and ensures even distribution of the laundry by repeatedly starting and stopping drum spinning.

If the laundry is extremely unevenly distributed, the speed is reduced or the spin cycle is not performed for safety reasons.

Note: Place large and small items of laundry evenly in the drum. → *Page 49*

VoltCheck

depending on the model

The colon in the Finished in-time display:

- **Flashes**, if the voltage is currently too low.
- **Pulses**, if insufficient voltage was detected during the programme.



Note: Insufficient voltage may lead to programme extensions and/or a non-satisfactory spin result, for example.



Cleaning and maintenance

Warning

Danger of death!

There is a risk of electric shock if you touch live components. Switch off the appliance and pull out the mains plug.

Warning

Risk of poisoning!

Toxic vapours can be produced by cleaning agents that contain solvents, e.g. cleaning solvent. Do not use cleaning agents that contain solvents.

Caution!

Damage to the appliance

Cleaning agents that contain solvents, e.g. cleaning solvent, can damage surfaces and components in the machine. Do not use cleaning agents that contain solvents.

Prevent detergent residue from building up and odours from forming by following these instructions:

Notes

- Ensure the room in which the washing machine is set up is well ventilated.
- Leave the door and detergent dispenser tray open slightly when the washing machine is not in use.
- Occasionally run a wash using the **Cottons 60 °C** programme and powder detergent.

Machine housing/control panel

- Wipe the housing and the control panel with a soft, damp cloth.
- Remove the detergent residue immediately.
- Do not clean with a water jet.

Drum

Use chlorine-free cleaning agents, do not use steel wool.

If there are odours in the washing machine, or to clean the drum, run the **Drum Clean 90 °C** programme without laundry. Add washing powder.

Descaling

Descaling should not be necessary if the detergent is measured out correctly. However, if it is required, follow the manufacturer's instructions for the descaling agent. Suitable descalers can be obtained via our website or from customer services. → *Page 53*

The drain pump is blocked, emergency draining

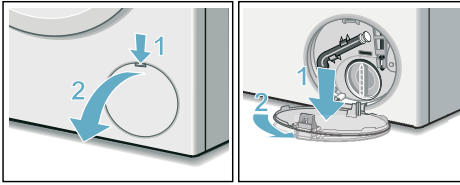
Warning

Risk of scalding!

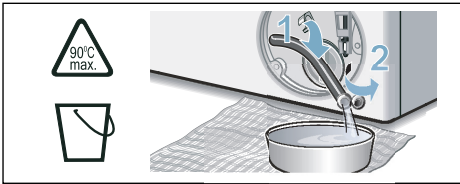
When you wash at high temperatures, the water gets very hot. If you come into contact with the hot water, you may be scalded.

Allow the water to cool down.

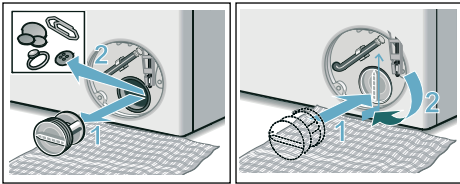
1. Turn off the tap so that no more water can flow in and it has to be drained via the drain pump.
2. Switch off the appliance. Pull out the mains plug.
3. Open and remove the service flap.



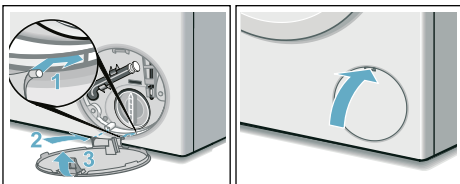
4. Take the drain hose out of the holder.
Remove the sealing cap and drain the water into a suitable container.
Replace the sealing cap and place the drain hose back in its holder.



5. Carefully unscrew the pump cover, as residual water may leak out.
Clean the inside and the thread on the pump cover and pump housing.
The impeller in the drain pump must be able to rotate.
Refit the pump cover and screw it on tightly. The handle must be positioned vertically.



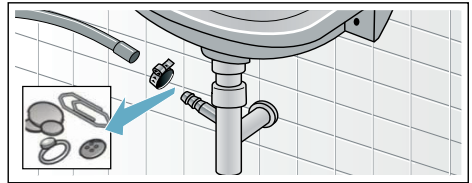
6. Reinsert the bottom of the service flap into the slot, clip it into place and close the flap.



Note: To prevent unused detergent from flowing straight into the drain during the next wash, pour 1 litre of water into the manual dosing compartment and start the **Drain/Empty** program.

The drain hose at the siphon is blocked

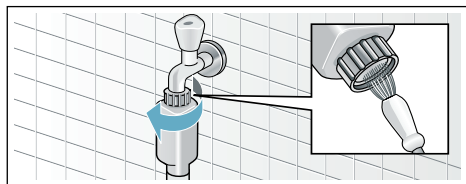
1. Switch off the appliance. Pull out the mains plug.
2. Loosen the hose clamp. Carefully remove the drain hose; residual water may leak out.
3. Clean the drain hose and siphon connecting piece.



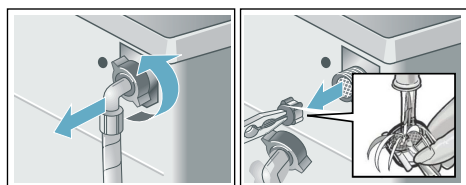
4. Re-attach the drain hose and secure the connection point using the hose clamp.

Filter in the water supply blocked

1. Release water pressure in the supply hose:
 - a) Turn off the tap.
 - b) Select the Cottons programme.
 - c) Start the programme and leave it to run for approx. 70 seconds.
 - d) Switch off the appliance.
 - e) Pull out the mains plug.
2. Clean the filters:
 - a) Disconnect the hose from the water tap.
Clean the filter with a small brush.



- b) For standard and Aqua-Secure models, clean the filter on the rear of the appliance:
Remove the hose from the rear of the appliance.
Use pliers to remove the filter and then clean it.



- c) Connect the hose and check for leaks.

Faults and what to do about them.

Emergency release

E.g. in the event of a power cut

The programme continues when the power supply is restored.

However, if the laundry has to be removed, the washing machine door can be opened as follows:

Warning **Risk of scalding!**

When you are washing at high temperatures, there is a risk of scalding if you come into contact with hot water and laundry.

If possible, leave it to cool down first.

Warning **Risk of injury!**

You may injure your hands if you reach into the drum while it is turning.
Do not reach into the drum when it is turning.

Wait until the drum has stopped turning.

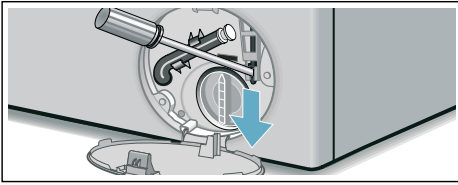
Caution! **Water damage**

Any escaping water may cause water damage.

Do not open the door if water can be seen through the glass.






1. Switch off the appliance. Pull out the mains plug.
2. Drain the water. → *Page 45*
3. Pull the emergency release downwards with a tool and release.
The door can then be opened.

en Faults and what to do about them.



Information on the display panel


Indicator/symbol	Cause/remedy
☐ off	The door is unlocked at the end of the program or when the program is paused if more laundry can be added.
☐ is continuously lit	<ul style="list-style-type: none"> ■ While the program is in progress. Door locked. ■ Paused: Temperature too high. Wait until the temperature drops. ■ Paused: Spin speed too high. Wait until the drum comes to a halt. ■ Paused: Water level too high. It is not possible to add more laundry. Touch ▷ to resume the program. ■ Is ☐ selected (Rinse Stop = no final spin)? → Page 28
☐ is flashing	<ul style="list-style-type: none"> ■ Slowly: The door cannot currently be locked or unlocked. Please wait. ■ Quickly: Close the door because water can flow out from the laundry.
▷ off	At the end of the program, while the door is open
▷ is continuously lit	After the program has started
▷ is flashing	Before the program starts, paused
⚡ is continuously lit	Water pressure too low, may increase the program duration.
⚡ is flashing	The appliance is not being supplied with water: <ul style="list-style-type: none"> ■ Turn the tap on fully, ■ The supply hose is kinked/trapped, ■ Clean the filter if necessary. → Page 46
☞ 3s is continuously lit	The childproof lock is activated – deactivate it. → Page 30
☞ 3s is flashing	The childproof lock is activated – the program selector has been turned or the control panel touched.
☞ is flashing	Run the Drum Clean 90 °C program or a 60 °C program to clean and care for the drum and the outer tub. <p>Notes</p> <ul style="list-style-type: none"> ■ Run the program without laundry. ■ Use all-purpose washing powder or a detergent that contains a bleaching agent. To prevent foaming, only use half the amount of detergent recommended by the detergent manufacturer. Do not use detergents intended for woollens or delicates. ■ Switch the notification signal on/off

Indicator/symbol	Cause/remedy
 is continuously lit	Too much foam has been detected; additional rinse cycles have been activated.
 is continuously lit	Only for programs with automatic dosing activated: <ul style="list-style-type: none"> ■ The detergent drawer has not been pushed in fully. Push the detergent drawer in fully. ■ The pump unit is not inserted. Insert the pump unit into the drawer lid.
○ or  is flashing	There is not enough detergent/softener in the ○ or  dispenser. Pour more detergent/softener into the relevant dispenser. → <i>Page 40</i>
E:10 alternating with -00, -10 or -20	The pump unit of the automatic dosing system is blocked. Switch off the appliance. Clean the pump unit. → <i>Page 41</i> If this indicator/symbol/code appears again, call our after-sales service.
E:60 alternating with -2b and End	at the end of the program. Not an appliance fault – the unbalanced load detection system has interrupted the spin cycle because the laundry is unevenly distributed. Distribute small and large items of laundry evenly in the drum. Run the spin cycle again, if necessary.
E:35 alternating with -10	There is water in the base trough; the appliance is leaking. Turn off the tap. Call the after-sales service. → <i>Page 53</i>
E:36 alternating with -10	<ul style="list-style-type: none"> ■ The drain pump is blocked. Clean the drain pump. → <i>Page 45</i> ■ The drain hose/drain pipe is blocked. Clean the drain hose at the siphon. → <i>Page 46</i>
I am unable to connect to my home network.	<ul style="list-style-type: none"> ■ Wi-Fi is switched off. To connect to your home network, switch on Wi-Fi.  must appear on the display. ■ Wi-Fi is switched on but a connection to your home network cannot be established. Check whether your home network is available or try to connect to your home network again.
Other indicators/symbols/codes	Switch off the appliance, wait for 5 seconds and then switch it back on. If this indicator/symbol/code appears again, call our after-sales service. → <i>Page 53</i>

Faults and what to do about them.

Faults	Cause/remedy
Water is leaking from the appliance.	<ul style="list-style-type: none"> ■ Attach the drain hose correctly or replace it. ■ Tighten the threaded joint on the supply hose.
The appliance is not filling with water. The pause function cannot be activated.	For some programs (e.g. Cottons), there is a specific load detection step once the program is started. This takes approx. 1 minute. The appliance adjusts the amount of water depending on the size of the load. Water is then supplied to the drum. The pause function can then be activated.

Faults	Cause/remedy
The appliance is not filling with water.	<ul style="list-style-type: none"> ■ Have you started the program? ■ Is the tap turned on?
Detergent is not being dispensed.	<ul style="list-style-type: none"> ■ Could the filter be clogged? Clean the filter. → Page 46 ■ Is the supply hose kinked or trapped?
The door will not open.	<ul style="list-style-type: none"> ■ The safety function is active. Note: For safety reasons, the door remains locked when the water level or temperature is high (see → "Cancel the programme" on page 31) or while the drum is rotating. ■ Is ☐ selected (Rinse Stop = no final spin)? → Page 31 ■ Can the door only be opened by the emergency release? → Page 47
The program will not start.	<ul style="list-style-type: none"> ■ Have you started the program or selected Finished in-time? ■ Is the door closed? ■ Is the childproof lock activated? Deactivate it. → Page 30 ■ ☐ is continuously lit. The detergent drawer has not been pushed in fully. Push the detergent drawer in fully. ■ Is shop mode activated? If SHOP is shown on the display for 5 seconds after you switch the appliance on or off, this means that the appliance is in shop mode. Switch shop mode off as follows: <ol style="list-style-type: none"> 1. Switch the appliance off and then on again. 2. Wait until the SHOP message goes out on the display. 3. Press and hold ▷ for at least 5 seconds. OFF will appear on the display and the appliance will switch itself off automatically. Shop mode is now deactivated and you can use the appliance as normal.
Nothing happens when you press ▷ .	<ul style="list-style-type: none"> ■ ☐ is continuously lit. The detergent drawer has not been pushed in fully. Push the detergent drawer in fully.
Nothing happens when you press ⏏ i-DOS ○ or ⏏ i-DOS ⊗/○ .	<ul style="list-style-type: none"> ■ Is automatic dosing an option for the program? Overview of programs → Printed supplement for the operating and installation instructions ■ Is the pump unit blocked? Switch off the appliance and clean the pump unit. → "Emptying the i-DOS detergent drawer, cleaning the i-DOS detergent drawer and its housing, cleaning the i-DOS pump unit" on page 41
The wrong detergent/fabric softener has been poured into the dispenser(s).	<ul style="list-style-type: none"> ■ Empty the dispenser(s), clean it/them and pour in the correct product. → "Emptying the i-DOS detergent drawer, cleaning the i-DOS detergent drawer and its housing, cleaning the i-DOS pump unit" on page 41 → "Filling the dispensers" on page 40
Detergent/fabric softener has congealed in the dispensers.	<ul style="list-style-type: none"> ■ Clean and refill the dispensers. → "Emptying the i-DOS detergent drawer, cleaning the i-DOS detergent drawer and its housing, cleaning the i-DOS pump unit" on page 41 → "Filling the dispensers" on page 40

Faults	Cause/remedy
Foam is leaking from the detergent drawer.	<ul style="list-style-type: none"> ■ Automatic dosing: i-DOS Check the dosage settings and, if required, reduce the detergent dosage. → <i>Page 39</i> If necessary, use a different liquid detergent/fabric softener. ■ Manual dosing: Have you used too much detergent? Use less detergent for the next wash cycle. ■ Immediate action: Mix one tablespoon of fabric softener with 1/2 litre of water and pour it into the manual dosing compartment (not suitable for outdoor clothing, sportswear or items stuffed with down).
Repeated, intensive foaming.	<ul style="list-style-type: none"> ■ Automatic dosing: i-DOS Check the dosage settings and, if required, reduce the detergent dosage. → <i>Page 39</i> If necessary, use a different liquid detergent/fabric softener. ■ Manual dosing: Have you used too much detergent? Add less detergent the next time you run a wash cycle with the same load.
Detergent/fabric softener drips off the seal and collects on the door or in the seal fold.	There is too much detergent/fabric softener in the dispensers. Do not fill the dispensers above the max. mark.
Washing results not satisfactory.	<ul style="list-style-type: none"> ■ i-DOS Check the dosage settings and, if required, increase the detergent dosage. → <i>Page 39</i> ■ Use a different liquid detergent.
The drum briefly jerks or judders after the program has started.	Not a fault – the internal motor test may cause the drum to jerk or judder briefly when the wash program starts.
The water is not being pumped out.	<ul style="list-style-type: none"> ■ Is  selected (Rinse Stop = no final spin)? → <i>Page 31</i> ■ Clean the drain pump. → <i>Page 45</i> ■ Clean the drain pipe and/or the drain hose.
Water is not visible in the drum.	Not a fault – the water is below the visible area.
Spin results not satisfactory. Laundry is wet/too damp.	<ul style="list-style-type: none"> ■ Not a fault – the unbalanced load detection system has interrupted the spin cycle because the laundry is unevenly distributed. Distribute small and large items of laundry evenly in the drum. ■ Is Easy-Iron selected? → <i>Page 27</i> ■ Is the selected speed too low?
Drum starts rotating briefly several times.	Not a fault – the unbalanced load detection system is eliminating an imbalance.
The program is taking longer than usual.	<ul style="list-style-type: none"> ■ Not a fault – the unbalanced load detection system is eliminating an imbalance by repeatedly redistributing the laundry. ■ Not a fault – the foam detection system is active; this adds an additional rinse cycle.
The duration of the program changes during the wash cycle.	Not a fault – the program sequence is optimised for the specific washing process. This may change the program duration shown on the display panel.

Faults	Cause/remedy
Odours in the washing machine.	<p>Run the Drum Clean or Cottons 90 °C program without laundry.</p> <p>Add all-purpose washing powder or a detergent that contains a bleaching agent.</p> <p>Note: To prevent foaming, only use half the amount of detergent recommended by the detergent manufacturer. Do not use detergents intended for woollens or delicates.</p>
Loud noises, vibrations and machine “wandering” during the spin cycle.	<ul style="list-style-type: none"> ■ Is the appliance level? Make the appliance level. → <i>Page 17</i> ■ Are the appliance's feet secured? Secure the appliance's feet. → <i>Page 17</i> ■ Have the transit securing devices been removed? Remove the transit securing devices. → <i>Page 14</i>
The touch display does not work while the appliance is running.	<ul style="list-style-type: none"> ■ Has there been a power failure? ■ Have the fuses blown/has the circuit breaker tripped? Switch the circuit breaker on/replace the fuses. ■ If the fault occurs repeatedly, call our after-sales service.
There is detergent residue on the laundry.	<ul style="list-style-type: none"> ■ Some phosphate-free detergents contain water-insoluble residue. ■ Select Rinse or brush the laundry after washing.
When the appliance is paused, ▷00 flashes and Ⓞ is lit continuously.	<ul style="list-style-type: none"> ■ The water level is too high. It is not possible to add more laundry. Close the door immediately, if necessary. ■ Touch ▷00 to resume the program.
When the appliance is paused, ▷00 flashes and Ⓞ is off.	<p>The door is unlocked. It is possible to add more laundry.</p>
Home Connect is not working.	<ul style="list-style-type: none"> ■ You can find solutions to problems with Home Connect at www.home-connect.com. ■ The availability of the Home Connect functionality on your appliance depends on the availability of the Home Connect Services (e.g. provision of the app) in your country. Home Connect Services are not available in every country – for further information please check: www.home-connect.com.
If you cannot rectify a fault yourself (after switching the machine off and then on again) or a repair is required:	<ul style="list-style-type: none"> ■ Switch off the appliance and pull the mains plug out of the socket. ■ Turn off the tap and call the after-sales service.



Technical data

Dimensions:

850 x 600 x 590 mm
(height x width x depth)

Weight:

70 - 85 kg (depending on model)

Mains connection:

Mains voltage 220 - 240 V, 50 Hz

Nominal current 10 A

Nominal power 1900 – 2300 W

Water pressure:

100 - 1000 kPa (1 - 10 bar)

Power consumption when switched off:

0,10 W

Power consumption when left on:

0,10 W



After-sales service

If you cannot rectify a fault yourself, contact customer services. → Cover page

We will always find an appropriate solution in order to avoid unnecessary visits by engineers.

Please give customer services the product number (E no.) and the production number (FD) of the appliance.

E-Nr. _____	FD _____
-------------	----------

E no. Product number
FD Production number
You can find this information *depending on the model:

On the inside of the door*/in the opened service flap* and on the rear of the appliance.

Trust the expertise of the manufacturer.

Contact us for assistance. By doing so, you will ensure that the repairs are carried out by trained service personnel using genuine spare parts.



Aqua-Stop warranty

Only for appliances with Aqua-Stop

In addition to warranty claims against the vendor based on the purchase agreement and to our appliance warranty, we will provide compensation under the following conditions:

1. If water damage is caused due to a fault in our Aqua-Stop system, we will compensate domestic customers for the damage caused.
2. The liability guarantee is valid for the service life of the appliance.
3. It is a prerequisite of all warranty claims that the appliance with Aqua-Stop must have been installed and connected correctly in accordance with our instructions; this also includes a correctly fitted Aqua-Stop extension (genuine accessories). Our warranty does not cover defective feed lines or fittings leading to the Aqua-Stop connection at the tap.
4. Appliances with Aqua-Stop do not need to be supervised during operation, nor secured afterwards by turning off the tap.

The tap only needs to be turned off if you are away from home for a long period, e.g. for several weeks' holiday.



Thank you for buying a Bosch Home Appliance!

Register your new device on MyBosch now and profit directly from:

- **Expert tips & tricks for your appliance**
- **Warranty extension options**
- **Discounts for accessories & spare-parts**
- **Digital manual and all appliance data at hand**
- **Easy access to Bosch Home Appliances Service**

Free and easy registration – also on mobile phones:

www.bosch-home.com/welcome



Looking for help? You'll find it here.

Expert advice for your Bosch home appliances, need help with problems or a repair from Bosch experts.

Find out everything about the many ways Bosch can support you:

www.bosch-home.com/service

Contact data of all countries are listed in the attached service directory.

Robert Bosch Hausgeräte GmbH

Carl-Wery-Straße 34

81739 München, GERMANY

www.bosch-home.com



9001534567 (0001)

en