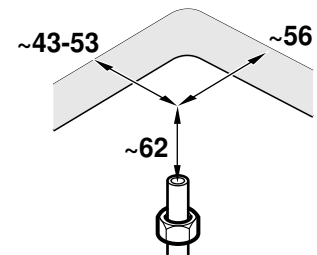
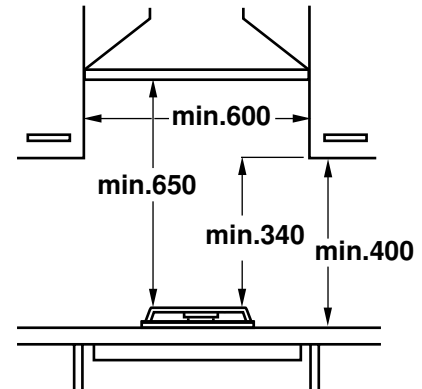
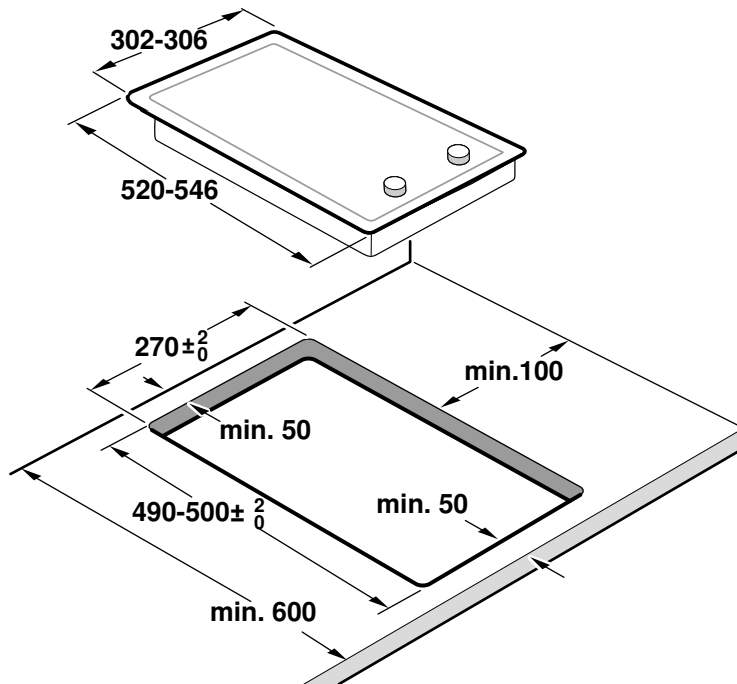
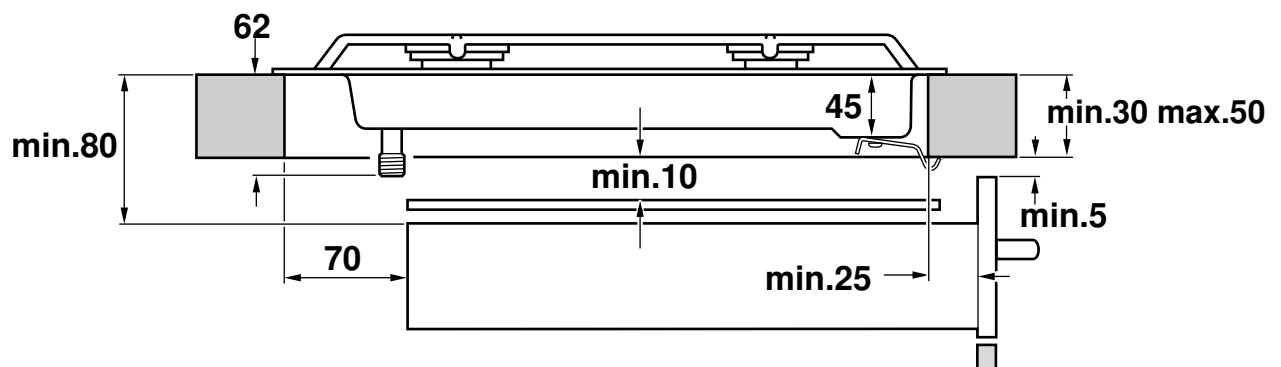


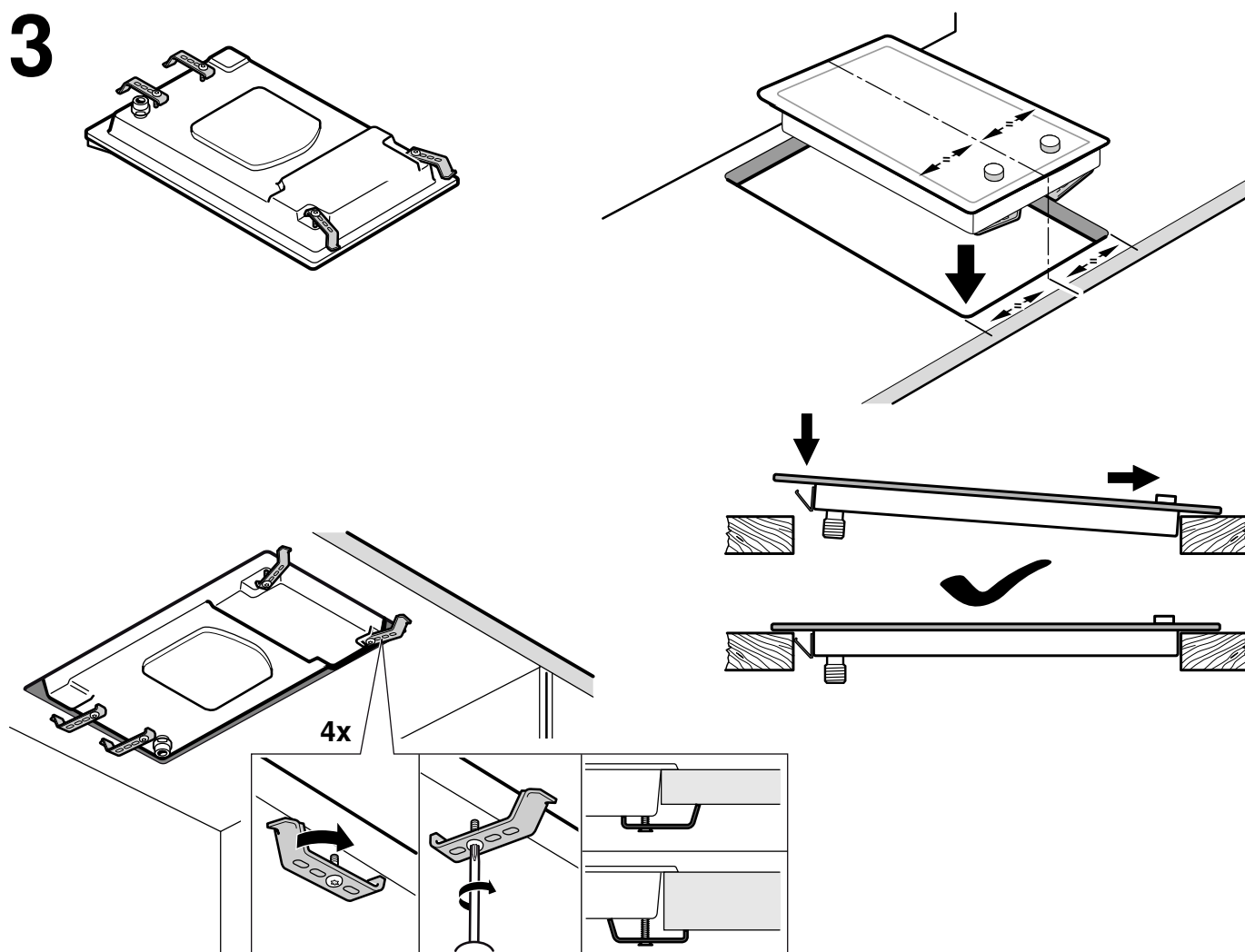
# 1



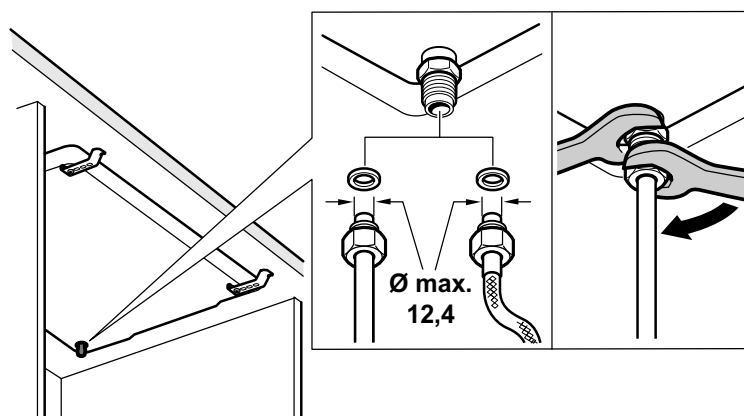
# 2



# 3



# 4



# 5

220V - 240V ~



## 安全预防措施

在安装和使用之前，请先阅读电器的使用说明。

本说明中的图片仅作参考之用。

**如果不遵守本手册中的要求，制造商不承担任何责任。**

本电器必须在通风良好的场合下使用。切勿将它连接到燃烧产物清除设备上。

**所有与安装、连接、调整和燃气类型改装有关的操作都必须由获得授权的安装工程师根据适用的所有规定、标准以及当地的燃气和电力提供商的要求执行。其中应特别注意通风方面的规定。**

**如要改装为其它燃气类型，建议与技术支持服务部联系。**

本电器仅供家庭使用，不供商业用途和专业人员使用。本电器不能安装在游艇或篷车中。仅当电器用于设计用途时保修才有效。

在安装之前，需要检查当地的燃气配送条件（燃气类型及压力、功率、电压）是否与铭牌上所指出的电器的调整相兼容。

**开始工作前，断开电器的电源和气源。**

电源线必须固定在橱柜上，避免接触烤箱或灶具的灼热部件。

接通电源的电器必须接地。

请勿擅自改动电器内部元件。如有必要，致电我们的技术支持服务部。

## 安装之前

本电器属于 3 类产品，符合 EN 30-1-1 规范中关于燃气型电器：嵌入式电器的规定。

这些电器可通过接头配件与同型号的传统灶具组合使用。详情参见产品目录。

在其中安装电器的橱柜必须正确固定并保持稳固。

电器旁边的橱柜以及用于黏附它的夹层包覆和胶水必须是由不可燃且耐热的材料制成。

本电器不能安装在冰箱、洗衣机、洗碗机或类似设备上方。

烤箱上必须有强制通风才能在其上方安装灶具。在安装手册中查看烤箱的尺寸。

如果安装了抽油烟机，则必须遵守安装手册中的说明，同时一定确保离灶具的最小垂直距离（图 1）。

## 准备橱柜（图 1-2）

在工作台切出合适尺寸的槽口。

如果灶具为电灶或混合灶（使用燃气和电能），且下面没有烤箱，则在距离灶具底部 10 mm 处放一块阻燃的隔板（例如金属或胶合板）。这样可防止接近灶具的底部。如果灶具为燃气型，建议在相同距离处放一块隔板。

在木质工作台上，为切割表面涂抹一层特殊胶水，这样可以防止工作台下方受潮。

请确保灶具下方橱柜与大气之间满足通风要求，橱柜通风口面积不小于 100 cm<sup>2</sup>，否则可能在恶劣情况下造成泄漏燃气沉积而引起爆炸。

## 安装电器（图 3）

**提示：**安装电磁灶时请戴上防护手套。

夹具和粘合密封件（位于灶具的底部）在出厂时已安装：在任何情况下都不要拆除这些部件：粘合密封件可防止渗水。

将电器固定到已安装的橱柜：

1. 将灶具转动到正确位置。
2. 松开支架上的螺丝，以便它们可以自由转动。不需要完全拧开支架上的螺丝。
3. 将电器稳稳地插入开孔中。
4. 转动支架并紧紧地将它们拧入。支架的螺丝必须与外罩底部垂直。

支架的位置取决于橱柜操作面的厚度。

不要使用硅树脂将炉灶粘到橱柜操作面上。

## 拆除灶具

关断电器的电源和气源。

拧下夹具，然后按照与安装相反的顺序进行拆卸。

## 燃气连接（图 4）

燃气连接装置必须位于便于检修截止阀的位置。

燃气灶进口接头端有 1/2" (20.955 mm) 的螺纹，可实现：

- 固定式连接。
- 柔性管式连接（最短 1 m - 最长 3 m）。

使用天然气的燃气灶具，应使用金属波纹管进行连接。

您必须避免管路接触橱柜活动部分（例如抽屉），并避免进入任何可能被占用的空间。

## △ 有泄漏危险。！

如果连接进行过改动，请检查密封性。

在连接发生移动后，制造商不对任何连接泄漏负责。

## 电气连接（图 5）

本电器采用“Y”型接线：电源线只能由技术支持服务部更换，用户不能更换。必须遵守电源线类型和最小横截面要求。

灶具自带电源电缆（带或不带墙壁插座）。

带插头的电器只能连接到正确安装了接地线的插座上。

提供最小触点间隔为 3 mm 的全极断路开关（不适用于用户能触及插头接口的情况）。

## en

## Safety precautions

Read the appliance's instructions before installing and using.

The images shown in these instructions are for guidance only.

**The manufacturer is exempt from all responsibility if the requirements of this manual are not complied with.**

This appliance must only be used in well ventilated places. It must not be connected to a combustion product removal device.

**All operations relating to installation, connection, regulation and conversion to other gas types must be carried out by an authorised installation engineer, respecting all applicable regulations, standards and the specifications of the local gas and electricity suppliers. Special attention shall be paid to ventilation regulations.**

**It is recommended you contact the Technical Assistance Service to change to another gas type.**

This appliance has been designed for home use only, not for commercial or professional use. This appliance cannot be installed on yachts or in caravans. The warranty will only be valid if the appliance is used for the purpose for which it was designed.

Before installing, you need to check that local distribution conditions are compatible with the appliance's adjustment indicated on the specifications plate (gas type and pressure, power, voltage).

**Before you begin, turn off the appliance's electricity and gas supply.**

The supply cable must be attached to the unit to prevent it from touching hot parts of the oven or hob.

Appliances with electrical supply must be earthed.

Do not tamper with the appliance's interior. If necessary, call our Technical Assistance Service.

## Before installing

This appliance is class 3 type, according to the EN 30-1-1 regulation for gas appliances: built-in appliance.

These appliances can be combined with conventional hobs of the same make, using the joint accessory. See the catalogue for details.

The kitchen unit in which the appliance is installed must be properly secured and stable.

The kitchen units next to the appliance, the laminated covering and glue for adhering it must be made of non-flammable and heat-resistant materials.

This appliance cannot be installed above fridges, washing machines, dishwashers or similar.

An oven must have forced ventilation to install a hob above it. Check the dimensions of the oven in the installation manual.

If an extractor fan is installed, you must follow the instructions in the installation manual, always respecting the minimum vertical distance from the hob (fig. 1).

## Preparation of the kitchen unit (fig. 1-2)

Make an appropriate size cut in the work surface.

If the hob is electric or mixed (gas and electricity) and there is no oven below, place a non-flammable separator (e.g. metal or plywood) 10 mm from the bottom of the hob. This will prevent access to the base of the hob. If the hob is gas, it is recommendable to place the separator at the same distance.

Seal all work surfaces made of wood with special sealer/glue to protect it against moisture damage.

To avoid leaking gas to accumulate and cause an explosion, ensure that the cabinet on which the built-in cooking appliance is mounted has an air outlet to the surrounding room with a minimum cross-section of 100 cm<sup>2</sup>.

### Installation of appliance (fig. 3)

**Note:** Wear protective gloves to fit the hob.

The clips and adhesive seal (underside of the hob) are factory-fitted: Do not remove these under any circumstances: The adhesive seal prevents water seepage.

Securing the appliance to the fitted unit:

1. Turn the hob into the correct position.
2. Loosen the screws on the brackets so they can turn freely. You do not need to fully undo the screws on the brackets.
3. Insert the appliance evenly into the cut-out.
4. Turn the brackets and tightly screw them in. The screws for the brackets must be vertical to the base of the housing.

The position of the brackets depends on the worktop thickness.

Do not stick the hob onto the worktop with silicone.

### Removal of hob

Turn off the appliance's electricity and gas supply.

Unscrew the clips and proceed in the reverse order to installation.

### Gas connection (fig. 4)

The gas connection must be located in a position where the stop tap is accessible.

The end of the inlet connection point of the gas hob has a cylindrical 1/2" thread (20.955 mm) that allows for:

- A fixed connection.
- Connection using a flexible pipe (L min. 1 m - max. 3 m).

A metal connection hose should be used if the hob is connected to natural gas.

You must prevent the pipe from coming into contact with moving parts of the kitchen unit (for example, a drawer) and prevent access to any spaces which might become obstructed.

#### **⚠ Danger of leaks!**

If any connection is handled, check the seal.

The manufacturer is not liable for any connection leaking, after being handled.

### Electric connection (fig. 5)

This appliance is type "Y": the supply cable can only be changed by the Technical Assistance Service and not the user. The cable type and minimum cross-section must be respected.

The hobs are supplied with a power cable with or without a wall socket plug.

Appliances with plugs must only be connected to sockets that have earth wires correctly installed.

Provide an omnipolar cut-off switch with a minimum contact opening of 3 mm (except for plug connections, if the user has access to it).