



INTENZA



BOSCH

zh	3
en	5

亲爱的咖啡鉴赏者：

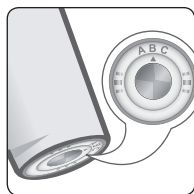
当您在制备香浓四溢的咖啡时，所使用的水起着非常重要的作用。毕竟一杯咖啡中约有 98% 都是水。

因此，我们推荐您使用专门为您的电器设计的 BRITA INTENZA 滤水器滤筒。它能帮助咖啡散发迷人的芳香，并能最有效地防止电器形成水垢。

使用 BRITA INTENZA 滤水器滤筒不仅能减少水中的钙含量，还能滤出自来水中影响咖啡芳香和口感的氯等物质。



由于水中的钙含量严重影响咖啡的芳香和油脂，因此 BRITA INTENZA 滤水器滤筒的下方配有芳香调节环。您可以转动此环，为自来水设定最佳芳香等级 (A、B 或 C)。



请使用附带的测试条确认芳香调节环的最佳设置。

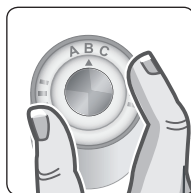
— 将测试条浸入自来水中约 10 秒钟，等待 1 分钟左右，然后检查结果。

— 现在对比水硬度等级：

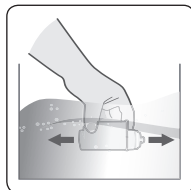
- | | |
|-----------------------------------|------------|
| <input type="checkbox"/> 等级 1 和 2 | ▶ 调节环设置为 A |
| <input type="checkbox"/> 等级 3 | ▶ 调节环设置为 B |
| <input type="checkbox"/> 等级 4 | ▶ 调节环设置为 C |

— 勾选适当的框格记录测试结果，以备将来更换滤水器时使用。

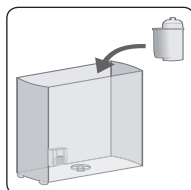
BRITA INTENZA 滤水器滤筒使用简单。按如下步骤操作：



将滤水器滤筒下方的芳香调节环转向正确的等级。



将滤水器滤筒放在冷水下轻轻摇动，除去所有气泡。



然后用手将滤筒固定在水箱中 (或如果身边有量匙，也可以使用)。



此时取出水箱，向水箱内加冷水至“max” (最大) 标记处。

重要：首次制备咖啡或意式浓咖啡前，必须在水中漂洗 BRITA INTENZA 滤水器滤筒。请阅读说明中的相关操作指示

当显示屏指示应更换滤水器或最迟 2 个月后会更换滤水器时，滤筒已失去效用。出于卫生考虑，请更换 BRITA INTENZA 滤水器滤筒，以确保没有水垢形成（水垢会损坏电器）。每次更换滤筒时，请务必重复上述步骤。

 使用后的 BRITA INTENZA 滤水器滤筒可按普通生活垃圾处理。如果您有其他问题，请拨打 0844742 4800 与 BRITA 消费者服务部联系。

滤筒更换件可从零售商或我们的客户服务部购买。

	零售	客户服务
订货号	TCZ7003	467873

重要：请务必阅读说明中的滤水器章节，以便熟悉电器的正确设置。启动任何保养程序（如“清洁”或“除垢”）之前，必须先拆除滤筒。

重要说明

- 滤筒更换件必须始终以原装密封包装存储在阴凉、干燥的地点。
- BRITA INTENZA 滤水器滤筒仅限用于自来水公司供应的自来水。
- 饮用水得到持续检查，因而能满足饮用水水质相关的法律要求。如果官方机构建议用户将自来水烧开饮用，则也应烧开 BRITA 过滤水。出现“boil water”（烧水）通知信息时，应彻底清洁全自动咖啡机，并插入新的滤水器滤筒。
- 仅限过滤冷水。
- 定期清洗水箱。
- 切记，特定人群最好将自来水烧开后再次饮用（如免疫系统较差的人群）。这一点同样适用于过滤水。
- 出于卫生考虑，滤水器滤筒特别经过镀银处理。少量对人体无害的银可能会释放于水中。该剂量符合世界卫生组织 (WHO) 的建议要求。
- 透析患者或患有肾病的人群应注意：过滤过程可能会导致钾含量略微上升。如果您患有肾病和 / 或需要低钾饮食，我们建议您先向医生咨询。
- 如果您的全自动咖啡机长期不用（例如假期时），建议您倒掉所有未过滤的水，并将滤筒留在水箱中。再次使用全自动咖啡机前，应从水箱中取出滤水器滤筒进行清洁，然后按照说明重复滤筒清洗步骤。
- 水应被视为另一种饮食产品。请在 1 – 2 天内用完水箱中的水。
- 如果不遵循 BRITA INTENZA 滤水器滤筒的使用和更换建议，恕我方不承担任何责任或保修义务。

Dear Coffee Connoisseur,

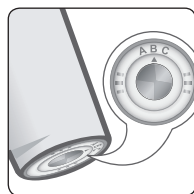
when you are preparing a flavoursome coffee drink, the water you use plays an important role. After all, it accounts for about 98% of a cup of coffee.

That is why we recommend you use the BRITA INTENZA water filter cartridge, which is designed specially for use with your appliance. It allows the flavour to develop optimally and also gives your appliance maximum protection from limescale.



Using the BRITA INTENZA water filter cartridge not only reduces the calcium content, but also filters substances which impair the aroma and taste of your coffee, such as chlorine, out of your tap water.

As the calcium content of water has a significant influence on the aroma and the 'crema' of your coffee, the BRITA INTENZA water filter cartridge has an aroma ring on the underside. By turning this ring you can set the optimal aroma level (A, B or C) for your tap water.

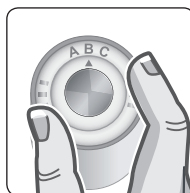


Please use the enclosed test strip to ascertain the optimal setting of the aroma ring.

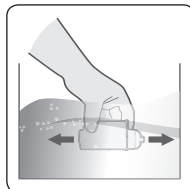
- Dip the test strip in the tap water for 10 seconds then wait for about 1 minute before checking the result.
- Now compare the water hardness levels:

<input type="checkbox"/> Levels 1 and 2	▶ ring setting A
<input type="checkbox"/> Level 3	▶ ring setting B
<input type="checkbox"/> Level 4	▶ ring setting C
- Record the test results for future filter changes by ticking the appropriate box.

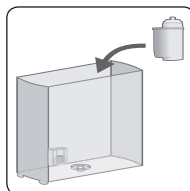
The BRITA INTENZA water filter cartridge is easy to use. Just proceed as follows:



Turn the aroma ring on the underside of the water filter cartridge to the correct level.



Hold the water filter cartridge under cold water and gently agitate it to remove all the air bubbles.



Then place the filter cartridge firmly in the water tank by hand (or using the measuring spoon if you have it nearby).



Now remove the water tank and fill it with cold water up to the „max“ mark.

Important: The BRITA INTENZA water filter cartridge must be rinsed in water before the first coffee or espresso is dispensed. Please read how to do this in the instructions.

When the display indicates it is time to change the water filter, or at the latest after 2 months, the cartridge is no longer effective. Please replace the BRITA INTENZA water filter cartridge for reasons of hygiene and so that there is no build-up of limescale (this could damage the appliance). Each time you change the cartridge, be sure to repeat the steps described above.



Used BRITA INTENZA water filter cartridges can be disposed of with the regular household garbage. If you have more questions, contact BRITA Consumer Service at 0844742 4800.

Replacement cartridges are available from retail outlets or from our customer service.

	Retail	Customer service
Ordering number	TCZ7003	467873

Important: Please be sure to read the water filter section in the instructions so that you are familiar with the exact settings for your appliance.

The filter cartridge must be removed before one of the service programs (e.g. „Cleaning“ or „Descaling“) is started.

Important notes

- Replacement filter cartridges should always be stored in a cool, dry place in their original sealed packaging.
- The BRITA INTENZA water filter cartridge may only be used with tap water provided by water utilities.
- This drinking water is constantly checked and meets the legal requirements governing drinking water quality. If users are advised by the official authorities to boil their tap water, BRITA filtered water should also be boiled. When the 'boil water' notice has been lifted, the fully automatic espresso machine should be cleaned completely and a new filter cartridge inserted.
- Filter cold water only.
- Clean the water tank regularly.
- Remember that it is generally advisable to boil tap water for certain groups of people (e.g. those with weak immune systems). This also applies to filtered water.
- For reasons of hygiene the water filter cartridge contents are specially treated with silver. A small amount of silver that poses no health risk may be released into the water. This amount complies with the recommendations of the World Health Organization (WHO).
- Note for dialysis patients or those with kidney disease: During the filter procedure there may be a slight increase in potassium content. If you have kidney disease and/or have to keep to a special potassium diet, we recommend you consult your doctor first.
- If your fully automatic espresso machine has not been used for a prolonged period (for example if you have been on holiday), we advise you to pour out any unfiltered water that is still present and to leave the filter cartridge in the water tank. Before you use the fully automatic espresso machine again, remove the water filter cartridge from the water tank, clean it and repeat the steps for rinsing the filter cartridge as described in the instructions.
- Water should be regarded as another food product. Please use up water in the tank within 1 to 2 days.
- Please understand that we cannot accept any liability or guarantee if you fail to observe our recommendations on the use and changing of BRITA INTENZA water filter cartridges.

9000957560