

Your washing machine

Congratulations – you have opted for a modern, high-quality domestic appliance manufactured by Bosch. The washing machine is distinguished by its economical use of water and energy. Each appliance which leaves our factory is inspected thoroughly to ensure that it functions properly and is in perfect condition. For further information about products, accessories, spare parts and service visit our web site: www.bosch-home.com or contact our customer service centres.

Please read the instruction manual and installation instructions supplied before switching on the washing machine.

Environmental disposal

Dispose of packaging in an environmentally friendly manner. This appliance has been identified in accordance with the European Directive 2012/19/EU on Waste Electrical and Electronic Equipment (WEEE). The Directive specifies the framework for an EU-wide valid return and recycling of waste appliances.

Protection of the environment/Conservation tips

- Load the maximum amount of laundry for the particular programme.
- Wash normally soiled laundry without prewash.
- The selectable temperatures apply to the care labels on the textiles. The temperatures in the machine may deviate from this so that you get the optimum mix of energy-saving and washing results.
- Dose detergent according to the manufacturer's instructions and water hardness.
- If the laundry is to be subsequently dried in a tumble dryer, select a spin speed as specified by the dryer manufacturer.

Intended use

- For domestic use only.
- For washing machine-washable fabrics in a detergent solution.
- To be operated with cold mains water and commercially available detergents and care products which are suitable for use in washing machines.
- The washing machine may be operated by children from 8 years of age, by persons who have limited physical, sensory or mental abilities and by persons who have inadequate experience or knowledge, provided they are **super-vised** or **have been instructed** by a responsible person.

Follow the safety instructions on Page 8!

- Do not leave children unattended near the washing machine!
- Children must not play with the appliance.
- Children must not perform any cleaning or maintenance work without supervision!
- Keep pets away from the washing machine!

Preparation

Correct installation according to separate installation instructions. Remove the transport bolts and install the bottom cover before using the appliance for the first time.

Check the machine

- Never switch on a damaged machine.
- Inform your after-sales service.

Insert the mains plug

With dry hands only. Only hold the plug by the plug body.

Turn on the tap

Washing

The machine was tested before leaving the factory. To remove any water left over from testing procedures, the first washing cycle should be carried out **without any laundry in the machine** → Page 8.

Sort and load the washing

Follow manufacturer's care information. Sort according to the information on the care labels. Sort according to type, colour, level of soiling and temperature. Do not exceed the maximum load → Page 7. Observe the instructions in the Important information section → Page 8! Load both large and small items of washing together.

Close the washing machine door

Take care not to trap any items of clothing between the loading door and rubber seal.

Add detergent and care product

Add the appropriate amount according to: Amount of laundry, level of soiling, water hardness (ask your water supply company) and manufacturer's instructions. During operation: take care when opening the detergent drawer.

Dilute viscous fabric softener and fabric conditioner with water. This prevents blockages.

Compartment II: Detergent for the main wash, water softener, bleach, stain remover

Compartment ☼: Fabric softener, impregnating agent, starch

Compartment I: Detergent for pre-wash

Washing

Removing the laundry

Open the washing machine door and remove the laundry. Leave the door and detergent drawer open to allow the interior of the machine to dry.

Turn off the tap

Switch off

- If the childproof lock is active, deactivate it → page 6.
- Set Programme selector to **Off**.

Programme ended when ...

- "End" and "0" appear on the display field, and the buzzer sounds.
- "- - -" appear on the display field, and the buzzer sounds → page 5 **Special symbol**

Changing the programme ...

If you have accidentally selected the wrong programme:

- If the childproof lock is active, deactivate it → page 6.
- Turn the programme selector to a newly selected programme.
- If required, select additional functions.
- Press the **Start/Soaking** button, new programme starts.

Pausing a programme ...

If you would like to pause a programme while it is running without changing the sequence:

- If the childproof lock is active, deactivate it → page 6.
- Press the **Start/Soaking** button:
- When "0" and "0" flash on the display field, wait for at least 2 minutes.
- When "YES" and "0" appear, the door can be opened. If required, add/remove the laundry.
- If "0" appears for a prolonged period, the door cannot be opened for reasons of your safety.
- Press the **Start/Soaking** button to continue the programme.

... or terminate the programme

If you would like to terminate a programme:

- If the childproof lock is active, deactivate it → page 6.
- Turn the programme selector to **Spin/Empty**.
- Press the **Start/Soaking** button.
- Remove the laundry after the spinning cycle.

Display information, Option buttons

Display Information

for programme status

Display Information Display information depends on the chosen programme

Option buttons

Spin speed

You can change the indicated spin speed. The maximum spin speed which can be selected depends on the chosen programme. You can also set " - - - " → **Special symbol**

Finish in time

Before a programme starts, you can specify by how many hours later the programme is to be ended.

- Press button until the required number of hours is shown. The Finish in time can be set in hour increments up to a maximum of 24 hours.
- Press **Start/Soaking**, the Finish in time starts counting down.

You can pause the programme to open the door even if the Finish in time is active.

Special symbol

- Except for the **Spin/Empty** programmes, press the button to set " - - - " (Rinse hold); the load is held in the final rinsing water. When the programme has ended, " - - - " appear. Select programme **Spin/Empty** or directly press button to select spin speed to spin the laundry.
- When the **Spin/Empty** programme is selected, press the button to set " - - - ", the programme is then defined as **Empty**; If " - - - " is not set, the programme is defined as **Spin**.
- When the **Empty** programmes has ended, " - - - " and "0" appears on the display field, it means the whole process is finished.

Additional functions

Buttons for additional functions In addition to the programme if required

Speed Wash Shorten the washing time. For slightly soiled items. If the function is selected, programme duration and max. load will be changed.

Rinse plus Additional rinse cycles, extended washing time. For areas with very soft water or for further improvement of the rinsing result.

Childproof lock Programme will not be changed by accidental operation.

- Activating the childproof lock: After the programme starts, press **Start/Soaking** and hold down for 5 seconds until the symbol is displayed. The symbol flashes if any setting is inadvertently changed.
- Deactivating the childproof lock: Press **Start/Soaking** and hold down for 5 seconds until the symbol goes out.
- If the programme is ended or any setting is changed, deactivate the childproof lock.
- If the programme is changed while the childproof lock is activated, the symbol flashes, the programme which is running will continue.
- If the childproof lock is deactivated while the programme selector is in a different position from when the childproof lock was activated, the programme which is currently running be halted.

Soaking Load washing of the same colour. Pour soaking agent/detergent into dispenser II according to the manufacturer's instructions. Set programme selector to **Cottons 40 °C** and select **Start/Soaking**. After approx. 10 minutes press **Start/Soaking** to stop the programme. After the required soaking time re-press **Start/Soaking**, if the programme is to be continued or change the programme.

Signal

- Start the signal mode
- Set volume for...

Sleep mode

If you do not operate the machine for about five minutes after selecting the programme or programme end, the display information goes out to save power.

- If required, press any button, and all information will be displayed again.

Contents

	Page
Intended use	1
Preparation	2
Washing	3/4
Display information, Option buttons	5
Additional functions	6
Programme overview	7
Safety instructions	8
Important information	8
Cleaning and care	9/10
Consumption values	11
Fault display	11
Customer service	12
Technical specification	12
What to do if...	13

Start/Soaking

For starting / soaking the washing cycle

Programme selector

For switching the machine on and off and for selecting the programme. Can be rotated in either direction

Display panel/Option buttons

Indicates the settings which have been selected

Additional functions

In addition to the programme if required

Set the programme

For detailed programme information, see programme overview → page 7. For option buttons → page 5.

Select additional functions

For additional functions → page 6.

Press the Start/Soaking button

The programme starts.

Programme overview

(see also the information on page 5/6)

Programmes	max. load (kg)	Type of laundry	°C
Jeans	2.0	Dark easy-care textiles.	30 °C
Cottons	6.0	Hard-wearing textiles, heat-resistant textiles made of cotton or linen.	30, 40, 60 °C
+ Prewash	6.0	Energy-intensive programme for heavily soiled hard-wearing textiles made from cotton or linen	90 °C
Wool	2.0	For hand and machine washable wool or wool-rich textiles, e.g. cashmere, chair or angora. Also suited for hand washable silk	30 °C
Super 15/30 min	3.5	Hard-wearing textiles made of cotton or linen, short programme	cold
Easy-Care	2.6	Easy-Care textiles made of cotton, linen, synthetic fibres or blended fabrics	cold, 40 °C
Mix	3.0	Textiles made of cotton and easy-care textiles.	cold, 30, 40 °C
Delicate/Silk	2.0	For delicate, washable textiles, e.g. made of silk, satin, synthetic fibres or blended fabrics	30 °C
Spin/Empty		Single spin programme or single empty programme → page 5	
Rinse		Washable textiles. Extra rinse with spin.	

* The max. load is default value when the programme is selected and the default additional function **Speed Wash** is deactivated.
 ** : obligatory; ○: optional

Programme overview

(see also the information on page 5/6)

Compartment**

II ☼ I

Speed Wash

Rinse Plus

Signal

Special symbol

Programme overview

(see also the information on page 5/6)

max. load (kg)

Type of laundry

°C

Programmes

Dark easy-care textiles.

Hard-wearing textiles, heat-resistant textiles made of cotton or linen.

Energy-intensive programme for heavily soiled hard-wearing textiles made from cotton or linen

For hand and machine washable wool or wool-rich textiles, e.g. cashmere, chair or angora. Also suited for hand washable silk

Hard-wearing textiles made of cotton or linen, short programme

Easy-Care textiles made of cotton, linen, synthetic fibres or blended fabrics

Textiles made of cotton and easy-care textiles.

For delicate, washable textiles, e.g. made of silk, satin, synthetic fibres or blended fabrics

Single spin programme or single empty programme → page 5

Washable textiles. Extra rinse with spin.

* The max. load is default value when the programme is selected and the default additional function **Speed Wash** is deactivated.
 ** : obligatory; ○: optional

Programme overview

(see also the information on page 5/6)

max. load (kg)

Type of laundry

°C

Programmes

Dark easy-care textiles.

Hard-wearing textiles, heat-resistant textiles made of cotton or linen.

Energy-intensive programme for heavily soiled hard-wearing textiles made from cotton or linen

For hand and machine washable wool or wool-rich textiles, e.g. cashmere, chair or angora. Also suited for hand washable silk

Hard-wearing textiles made of cotton or linen, short programme

Easy-Care textiles made of cotton, linen, synthetic fibres or blended fabrics

Textiles made of cotton and easy-care textiles.

For delicate, washable textiles, e.g. made of silk, satin, synthetic fibres or blended fabrics

Single spin programme or single empty programme → page 5

Washable textiles. Extra rinse with spin.

* The max. load is default value when the programme is selected and the default additional function **Speed Wash** is deactivated.
 ** : obligatory; ○: optional

Programme overview

(see also the information on page 5/6)

max. load (kg)

Type of laundry

°C

Programmes

Dark easy-care textiles.

Hard-wearing textiles, heat-resistant textiles made of cotton or linen.

Energy-intensive programme for heavily soiled hard-wearing textiles made from cotton or linen

For hand and machine washable wool or wool-rich textiles, e.g. cashmere, chair or angora. Also suited for hand washable silk

Hard-wearing textiles made of cotton or linen, short programme

Easy-Care textiles made of cotton, linen, synthetic fibres or blended fabrics

Textiles made of cotton and easy-care textiles.

For delicate, washable textiles, e.g. made of silk, satin, synthetic fibres or blended fabrics

Single spin programme or single empty programme → page 5

Washable textiles. Extra rinse with spin.

* The max. load is default value when the programme is selected and the default additional function **Speed Wash** is deactivated.
 ** : obligatory; ○: optional

Programme overview

(see also the information on page 5/6)

max. load (kg)

Type of laundry

°C

Programmes

Dark easy-care textiles.

Hard-wearing textiles, heat-resistant textiles made of cotton or linen.

Energy-intensive programme for heavily soiled hard-wearing textiles made from cotton or linen

For hand and machine washable wool or wool-rich textiles, e.g. cashmere, chair or angora. Also suited for hand washable silk

Hard-wearing textiles made of cotton or linen, short programme

Easy-Care textiles made of cotton, linen, synthetic fibres or blended fabrics

Textiles made of cotton and easy-care textiles.

For delicate, washable textiles, e.g. made of silk, satin, synthetic fibres or blended fabrics

Single spin programme or single empty programme → page 5

Washable textiles. Extra rinse with spin.

* The max. load is default value when the programme is selected and the default additional function **Speed Wash** is deactivated.
 ** : obligatory; ○: optional

Programme overview

(see also the information on page 5/6)

max. load (kg)

Type of laundry

°C

Programmes

Dark easy-care textiles.

Hard-wearing textiles, heat-resistant textiles made of cotton or linen.

Energy-intensive programme for heavily soiled hard-wearing textiles made from cotton or linen

For hand and machine washable wool or wool-rich textiles, e.g. cashmere, chair or angora. Also suited for hand washable silk

Hard-wearing textiles made of cotton or linen, short programme

Easy-Care textiles made of cotton, linen, synthetic fibres or blended fabrics

Textiles made of cotton and easy-care textiles.

For delicate, washable textiles, e.g. made of silk, satin, synthetic fibres or blended fabrics

Single spin programme or single empty programme → page 5

Washable textiles. Extra rinse with spin.

* The max. load is default value when the programme is selected and the default additional function **Speed Wash** is deactivated.
 ** : obligatory; ○: optional

For further information and a selection of our products go to our web site: <http://www.bosch-home.com> or contact our customer service centres

Robert Bosch Hausgeräte GmbH
Carl-Wery-Str. 34
D-81739 Munich/Germany

9000941869 0515
WAX16161IN
WAX20168IN

Safety instructions

- Read and follow the operating and installation instructions and all other information enclosed with the washing machine.
- Retain documents for subsequent use.
- Risk of electric shock**
 - Never pull out the mains plug by pulling on the power cord.
 - Never insert/pull out the mains plug with wet hands.
 - Make sure the cable is plugged into a socket which is correctly connected to a reliable earth connection.
- Risk of death**
 - Appliances which have reached the end of their service life:
 - Pull out the mains plug.
 - Sever the power cord and discard together with the plug.
 - Destroy the lock on the washing machine door.
 This will prevent children from locking themselves in and putting their lives at risk.
- Risk of suffocation**
 - Keep packaging, plastic film and packaging parts out of the reach of children.
- Risk of poisoning**
 - Keep detergents and care products out of the reach of children.
- Risk of explosion**
 - Caused by detergents containing solvents, e.g. stain remover. Items of washing pre-treated with solvent naphtha may cause an explosion after being loaded into the washing machine. Rinse such items thoroughly by hand before putting them in the washing machine.
- Risk of injury**
 - Washing machine door may become very hot.
 - Take care when draining hot detergent solution.
 - Do not climb on the washing machine.
 - Do not lean on the washing machine door when it is open.
 - Make sure that the pump cap is screwed on when the machine is running, avoid water leakage and touching the components of pump when they are in operation.

Cleaning and care

- Clean machine housing, control panel**
 - Wipe with a soft, damp cloth.
 - Do not use abrasive detergents.
 - Immediately remove washing and cleaning agent residue.
 - Do not clean the appliance with a water jet.
- Clean the detergent drawer ...**
 - ... if it contains detergent or fabric softener residue.
 1. Pull out, depress the insert and remove the drawer completely.
 2. Remove insert: Press the insert upwards with your finger.
 3. Clean the detergent dispenser and the insert with water and a brush.
 4. Refit the insert and secure in place.
 5. Insert the detergent drawer.
- Drum**
 - Leave the washing machine door open so that the drum can dry.
 - Rust stains – use chlorine-free cleaning agent, not steel wool.
- Descaling** *No laundry in the machine!*
 - This should be not be necessary if the detergent is dispensed correctly. However, follow the instructions of the descaler manufacturer.
- Frost protection**
 - If the washing machine is located in a room which is exposed to freezing temperatures, any residual water in both the pump and the water inlet hose must be drained every time after the machine is used.
 - Draining the pump → Page 10 Detergent solution pump
 - Draining the water inlet hose:
 1. Turn the tap off.
 2. Unscrew the hose from the tap and the rear of the appliance, drain out the water left inside the inlet hose.
 3. Before the next wash, screw the hose back on and check for leaks.

Cleaning and care

- Detergent solution pump**
 - Set the programme selector to **Off**, pull out the mains plug.
 1. Open and remove the maintenance cover.
 2. Carefully unscrew the pump cover - do not remove it completely.
 3. Let the water drain into a shallow container (let the remainder drip onto a floor cloth). Repeat the operation until there is no water left.
 4. Remove the pump cover. Remove foreign material/fluff from inside the pump.
 5. Clean the interior, pump cover thread and pump housing (fan impeller in the detergent solution pump must be able to rotate).
 6. Refit the pump cover and screw on tightly.
 7. Insert the maintenance cover and close it.
- Filter in the water inlet hose**
 - Reduce the water pressure in the supply hose:**
 1. Turn off the tap.
 2. Select any programme (except **Spin/Empty**).
 3. Press **Start/Soaking**. Leave programme running for approx. 40 seconds.
 4. Set the programme selector to **Off**. Pull out the mains plug.
 - Clean the filter:**
 1. Remove the hose from the tap. Clean the filter with a small brush.

or

 1. Remove the hose from the rear of the appliance. Remove filter with pliers and clean.
 2. Reconnect the hose and check for leaks.

Consumption values

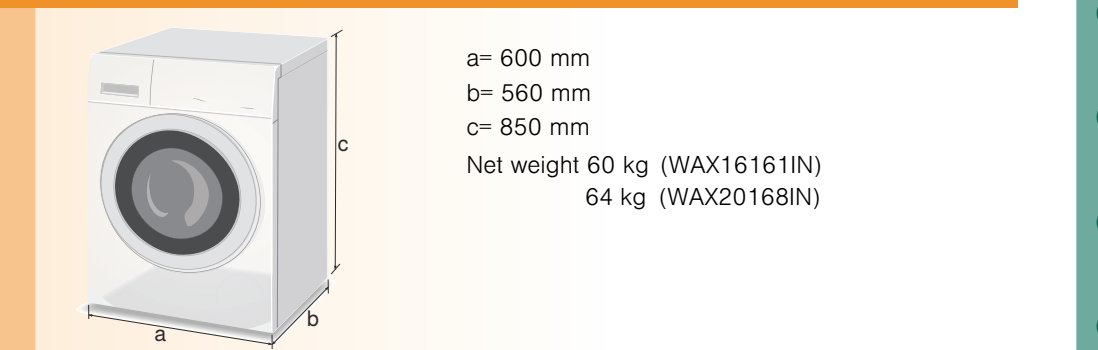
Programme	Additional function	Load	Electricity consumption**	Water**	Programme duration**
Cottons 40 °C	Speed Wash	3,5 kg	0,53 kWh	36 l	0:55 h
Cottons 60 °C *	-	6,0 kg	0,60 kWh	45 l	4:21 h
Easy care 40 °C	Speed Wash	2,6 kg	0,39 kWh	45 l	0:51 h
Mix 40 °C	Speed Wash	3,0 kg	0,43 kWh	32 l	0:42 h
Delicate/Silk 30 °C	Speed Wash	2,0 kg	0,27 kWh	35 l	0:38 h
Wool 30 °C	-	2,0 kg	0,22 kWh	35 l	0:43 h

* Programme setting for testing and energy labelling in accordance with GB standard.
 ** The values deviate from the indicated values depending on water pressure, hardness, and inlet temperature, ambiente temperature, type, amount and soiling of the laundry, detergent used, fluctuations in the power supply and selected additional functions.

Customer service

- Before calling customer service, please check whether you can eliminate the fault yourself → page 13 What to do if...
 - If you require advice, even during the warranty period, you will incur the costs for the callout of a technician.
 - The contact details for all countries can be found in the enclosed after-sales service directory.
 - When calling customer service, please give details of your address, telephone number, fault description, purchase date, product number (E-Nr.) and the production number (FD) of the appliance to prevent unnecessary callouts. This will save you additional costs.
- These numbers are shown on the rating plate which can be found on the frame of the open door and also on the rear of the appliance.*
- E-Nr _____ FD _____
- Product number Production number
- Rely on the professionalism of the manufacturer.** Please contact us. This will ensure that the repair is carried out by trained service technicians who arrive equipped with genuine spare parts for your appliance.

Technical specifications



Fault displays

- E:17**
 - Tap turned on?
 - Water inlet hose kinked or jammed?
 - Filter blocked? Clean filter → Page 10
 - Water pressure too low?
- E:18**
 - Loose debris is blocking the pump, clean the pump → Page 10
 - Drainage hose blocked?
- Other displays**
 - Switch off the appliance, wait 5 seconds and switch it back on. If the display appears again, call customer service.

What to do if ...

- Water is running out.
 - Fit/refit drainage hose.
 - Tighten screw-fitting on the supply hose.
- Water not flowing in. Detergent not washed in.
 - **Start/Soaking** not selected?
 - Tap not open?
 - Filter blocked? Clean filter → Page 10.
 - Water inlet hose kinked or jammed?
- Washing machine door cannot be opened.
 - Safety function active. Programme stopped?
 - Water in drum? Select **Spin/Empty** programme.
- Programme does not start.
 - **Start/Soaking** not selected or **Spin/Empty** is selected?
 - The **Spin/Empty** symbol flashes, washing machine door not closed properly.
- Detergent solution is not drained.
 - Clean detergent solution pump → Page 10.
 - Clean drainage hose.
- Additional function could not be activated for the selected programme.
 - Can the additional function be selected? → Page 7, programme overview.
- Water not visible in the drum.
 - Not a fault - water below the visible area.
- Spin cycle actuated several times.
 - Not a fault - unbalanced load detection system adjusts imbalance.
- Detergent in chamber I is not washed away.
 - **Prewash** programme not selected?
- Detergent residue in the detergent dispenser
 - Detergent is damp or lumpy, clean the detergent dispenser → Page 9.
 - Use the dosing aid for liquid detergent.
- Foam is emerging from the detergent drawer. The **Spin/Empty** symbol flashes
 - Too much detergent used?
 - Mix 1 tablespoon of fabric conditioner with ½ a litre of water and pour into dispenser II in the detergent drawer.
 - Reduce detergent dosage for the next wash cycle.
- Excessive noise, vibration and "wandering" during spin cycle.
 - Appliance feet fixed?
 - Secure appliance feet → Installation instructions.
 - Transportation bolt removed?
 - Remove transportation bolt → Installation instructions.
- Display panel/indicator lights do not function while the appliance is running.
 - Power failure?
 - Circuit breaker tripped? Reset the circuit breaker/change the fuse.
 - If the fault occurs repeatedly, contact customer service.
- Programme sequence longer than usual
 - Not a fault-unbalanced load detection system is adjusting the imbalance by repeatedly distributing the laundry.
 - Not a fault-foam detection system active.
- Detergent residues on the laundry
 - Occasionally, phosphate-free detergents contain water-insoluble residues.
 - Select **Rinse plus** for the next wash cycle or brush the laundry after washing.
- Washing result not satisfactory
 - Soiling is greater than expected? Select a suitable programme.
 - Detergent is underdosed?
- If you cannot correct a fault yourself or a repair is required:
 - Set the programme selector to **Off** and pull the mains plug out of the socket.
 - Turn off the tap and call customer service.



Important information

- Preparing/Protecting the laundry and the machine**
 - Brush sand out of pockets and cuffs/collars.
 - Check for metal items (paperclips, etc.).
 - Trousers, knitwear and knitted textiles, e.g. jersey garments, T-shirts or sweatshirts should be turned inside out.
 - Wash delicates in a net/bag (tights, curtains, underwired bras).
 - Close zips, fasten pillow cases/cushion covers.
 - Remove curtain runners or tie up in a net/bag.
- Laundry with different levels of soiling**
 - Light
 - Wash new items separately.
 - Do not prewash.
 - Heavy
 - If required, pre-treat stains. Select + **Prewash** programme.
 - Load less laundry. Select + **Prewash** programme.
- Before washing for the first time**
 - Do not put any laundry in the washing machine. Turn on the tap, fill approx. 1 litre of water and then pour ½ a measuring cup of detergent into dispenser II. Set the **Easy care 40 °C** programme and select **Start/Soaking**.
 - At the end of the programme, set the programme selector to **Off**.

Your washing machine

Congratulations – you have opted for a modern, high-quality domestic appliance manufactured by Bosch. The washing machine is distinguished by its economical use of water and energy. Each appliance which leaves our factory is inspected thoroughly to ensure that it functions properly and is in perfect condition. For further information about products, accessories, spare parts and service visit our web site: www.bosch-home.com or contact our customer service centres.



Please read the instruction manual and installation instructions supplied before switching on the washing machine.

Environmental disposal



Dispose of packaging in an environmentally friendly manner. This appliance has been identified in accordance with the European Directive 2012/19/EU on Waste Electrical and Electronic Equipment (WEEE). The Directive specifies the framework for an EU-wide valid return and recycling of waste appliances.

Contents

	Page
Intended use	1
Preparation	2
Washing	3/4
Display information, Option buttons	5
Additional functions	6
Programme overview	7
Safety instructions	8
Important information	8
Cleaning and care	9/10
Consumption values	11
Fault display	11
Customer service	12
Technical specification	12
What to do if	13



Protection of the environment/Conservation tips

- Load the maximum amount of laundry for the particular programme.
- Wash normally soiled laundry without prewash.
- The selectable temperatures apply to the care labels on the textiles. The temperatures in the machine may deviate from this so that you get the optimum mix of energy-saving and washing results.
- Dose detergent according to the manufacturer's instructions and water hardness.
- If the laundry is to be subsequently dried in a tumble dryer, select a spin speed as specified by the dryer manufacturer.

Intended use

- For domestic use only.
- For washing machine-washable fabrics in a detergent solution.
- To be operated with cold mains water and commercially available detergents and care products which are suitable for use in washing machines.
- The washing machine may be operated by children from 8 years of age, by persons who have limited physical, sensory or mental abilities and by persons who have inadequate experience or knowledge, provided they **are super-vised** or **have been instructed** by a responsible person.
 - Follow the safety instructions on Page 8!
 - Do not leave children unattended near the washing machine!
 - Children must not play with the appliance.
 - Children must not perform any cleaning or maintenance work without supervision!
 - Keep pets away from the washing machine!

Preparation



Correct installation according to separate installation instructions. Remove the transport bolts and install the bottom cover before using the appliance for the first time.



Check the machine

- Never switch on a damaged machine.
- Inform your after-sales service.



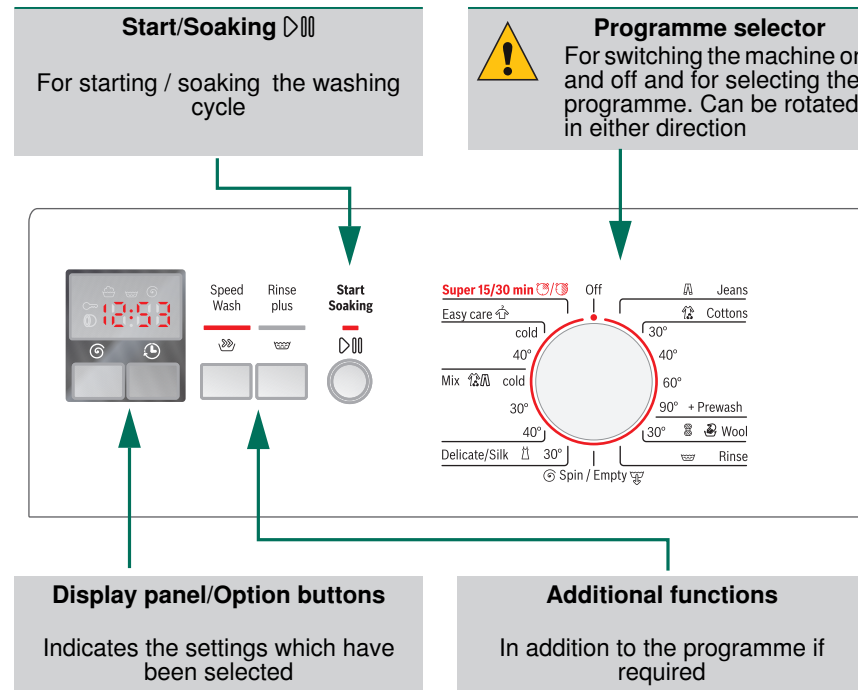
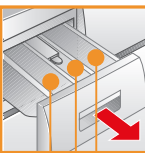
Insert the mains plug



With dry hands only. Only hold the plug by the plug body.



Turn on the tap



Compartment II: Detergent for the main wash, water softener, bleach, stain remover

Compartment ⌘: Fabric softener, impregnating agent, starch

Compartment I: Detergent for pre-wash

machine was tested before leaving the factory. To remove any water left over from testing procedures, the first washing cycle should be carried out **without** any laundry in the machine → Page 8.

Sort and load the washing

1

Follow manufacturer's care information.

Sort according to the information on the care labels.
Sort according to type, colour, level of soiling and temperature.

Do not exceed the maximum load → Page 7.

Observe the instructions in the Important information section → Page 8!

Load both large and small items of washing together.

Close the washing machine door

2

Take care not to trap any items of clothing between the loading door and rubber seal.

Add detergent and care product

3

Add the appropriate amount according to:
Amount of laundry, level of soiling, water hardness (ask your water supply company) and manufacturer's instructions.

Pour liquid detergent into the appropriate dispenser.

During operation: take care when opening the detergent drawer.

! Dilute viscous fabric softener and fabric conditioner with water. This prevents blockages.

Set the programme

4

For detailed programme information, see programme overview → page 7.

For option buttons → page 5.

Select additional functions

5

For additional functions → page 6.

Press the Start/Soaking button

6

The programme starts.

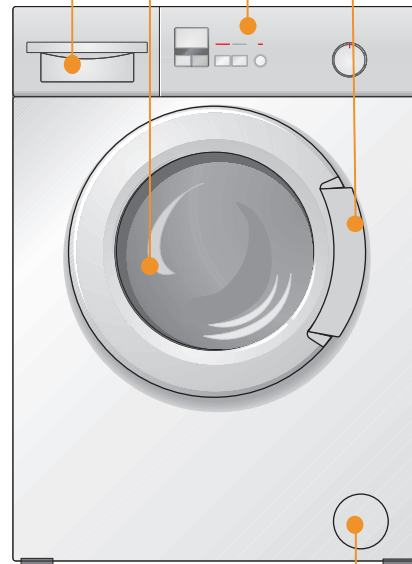
Washing

Detergent drawer with dispenser II, ⌘, I

Drum

Control panel

Door handle



Maintenance cover

10

Removing the laundry

Open the washing machine door and remove the laundry. Leave the door and detergent drawer open to allow the interior of the machine to dry.

9

Turn off the tap

8

Switch off

– If the childproof lock is active, deactivate it → page 6.
– Set Programme selector to **Off**.

7

Programme ended when ...

– “End” and “⌚” appear on the display field, and the buzzer sounds.
– “- - -” appear on the display field, and the buzzer sounds → page 5 **Special symbol**

Changing the programme ...

If you have accidentally selected the wrong programme:
– If the childproof lock is active, deactivate it → page 6.
– Turn the programme selector to a newly selected programme.
– If required, select additional functions.
– Press the **Start/Soaking** button, new programme starts.

Pausing a programme ...

If you would like to pause a programme while it is running without changing the sequence:
– If the childproof lock is active, deactivate it → page 6.
– Press the **Start/Soaking** button:
■ When “no” and “⌚” flash on the display field, wait for at least 2 minutes.
■ When “YES” and “⌚” appear, the door can be opened. If required, add/remove the laundry.
■ If “no” appears for a prolonged period, the door cannot be opened for reasons of your safety.
– Press the **Start/Soaking** button to continue the programme.

... or terminate the programme

If you would like to terminate a programme:
– If the childproof lock is active, deactivate it → page 6.
– Turn the programme selector to **Spin/Empty**.
– Press the **Start/Soaking** button.
– Remove the laundry after the spinning cycle.

Display information, Option buttons

Display Information



for programme status



Display Information
Display information depends on the chosen programme

wash: Not on if Spin/Empty is selected flashing: too much detergent used → page 13
Rinse: Not on if Spin/Empty is selected
Spin: Not on if “- - -” Rinse hold is selected
On: the door can be opened; flashing (after programme starts): the door was not closed correctly
On: childproof lock is activated; flashing: the setting was changed → page 6
800 : Default spin speed of the programme
- - - : Special symbol → page 5 Special symbol
1:30: Expected programme duration
24 h: Select Finish in time
<i>End</i> : End of programme
<i>E: 18</i> : Fault displays → page 11
<i>YES, NO</i> : “YES” if the door can be opened or “NO” if it cannot be opened during “Pause” period

Option buttons

Spin speed

You can change the indicated spin speed. The maximum spin speed which can be selected depends on the chosen programme. You can also set “- - -” → **Special symbol**

Finish in time

Before a programme starts, you can specify by how many hours later the programme is to be ended.

- Press button until the required number of hours is shown. The Finish in time can be set in hour increments up to a maximum of 24 hours.
- Press **Start/Soaking** , the Finish in time starts counting down.

You can pause the programme to open the door even if the Finish in time is active.

Special symbol - - -

- Except for the **Spin/Empty** programmes, press the button to set “- - -” (Rinse hold); the load is held in the final rinsing water. When the programme has ended, “- - -” appear. Select programme **Spin/Empty** or directly press to select spin speed to spin the laundry.
- When the **Spin/Empty** programme is selected, press the button to set “- - -”, the programme is then defined as **Empty**; If “- - -” is not set, the programme is defined as **Spin**.
- When the **Empty** programmes has ended, “- - -” and “” appears on the display field, it means the whole process is finished.

Additional functions

Buttons for additional functions

In addition to the programme if required

Speed Wash

Shorten the washing time. For slightly soiled items. If the function is selected, programme duration and max. load will be changed.

Rinse plus

Additional rinse cycles, extended washing time. For areas with very soft water or for further improvement of the rinsing result.

Childproof lock

Programme will not be changed by accidental operation.

- Activating the childproof lock: After the programme starts, press **Start/Soaking** and hold down for 5 seconds until the symbol is displayed. The symbol flashes if any setting is inadvertently changed.
- Deactivating the childproof lock: Press **Start/Soaking** and hold down for 5 seconds until the symbol goes out.
- If the programme is ended or any setting is changed, deactivate the childproof lock.
- If the programme is changed while the childproof lock is activated, the symbol flashes, the programme which is running will continue.
- If the childproof lock is deactivated while the programme selector is in a different position from when the childproof lock was activated, the programme which is currently running be halted.

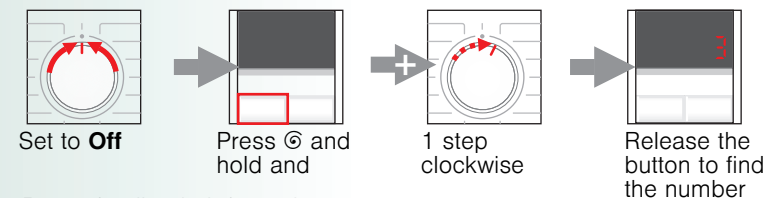
Soaking

Load washing of the same colour.

Pour soaking agent/detergent into dispenser II according to the manufacturer's instructions. Set programme selector to **Cottons** **40 °C** and select **Start/Soaking** . After approx. 10 minutes press **Start/Soaking** to stop the programme. After the required soaking time re-press **Start/Soaking** , if the programme is to be continued or change the programme.

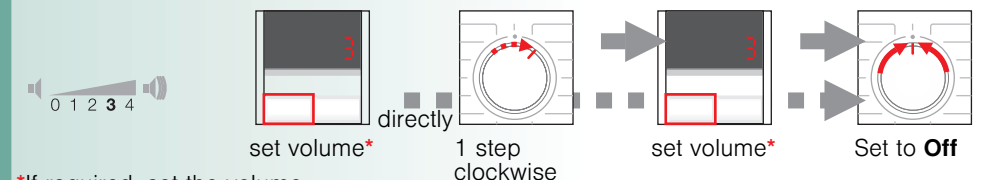
Signal

1. Start the signal mode



2. Set volume for...

Button feedback signals Information signals



*If required, set the volume repeatedly.

Sleep mode

If you do not operate the machine for about five minutes after selecting the programme or programme end, the display information goes out to save power.

- If required, press any button, and all information will be displayed again.

Programme overview

(see also the information on page 5/6)

Programmes	°C	max. load (kg)*	Type of laundry	Compartment**	Speed Wash	Rinse Plus
Jeans	30 °C	2,0	Dark easy-care textiles.	● ○	✓	✓
Cottons	30,40, 60 °C	6,0	Hard-wearing textiles, heat-resistant textiles made of cotton or linen.	● ○	✓	✓
+ Prewash	90 °C	6,0	Energy-intensive programme for heavily soiled hard-wearing textiles made from cotton or linen	● ○ ●	✓	✓
Wool	30 °C	2,0	For hand and machine washable wool or wool-rich textiles, e.g. cashmere, ohair or angora. Also suited for hand washable silk	● ○		
Super 15/30 min	cold	3,5	Hard-wearing textiles made of cotton or linen, short programme	● ○	✓	
Easy-Care	cold, 40 °C	2,6	Easy-Care textiles made of cotton, linen, synthetic fibres or blended fabrics	● ○	✓	✓
Mix	cold, 30, 40 °C	3,0	Textiles made of cotton and easy-care textiles.	● ○	✓	✓
Delicate/Silk	30 °C	2,0	For delicate, washable textiles, e.g. made of silk, satin, synthetic fibres or blended fabrics	● ○	✓	✓
Spin/Empty			Single spin programme or single empty programme → page 5 Special symbol			
Rinse			Washable textiles, Extra rinse with spin.			✓

* The max. load is default value when the programme is selected and the default additional function **Speed Wash** is deactivated.

** ● : obligatory; ○ : optional



For further information and a selection of our products go to our web site: <http://www.bosch-home.com> or contact our customer service centres

Robert Bosch Hausgeräte GmbH
Carl-Wery-Str.34
D-81739 Munich/Germany

WAX16161IN
WAX20168IN

9000941869
0515



Safety instructions

- Read and follow the operating and installation instructions and all other information enclosed with the washing machine.
- Retain documents for subsequent use.

Risk of electric shock

- Never pull out the mains plug by pulling on the power cord.
- Never insert/pull out the mains plug with wet hands.
- Make sure the cable is plugged into a socket which is correctly connected to a reliable earth connection.

Risk of death

- Appliances which have reached the end of their service life:
- Pull out the mains plug.
 - Sever the power cord and discard together with the plug.
 - Destroy the lock on the washing machine door. This will prevent children from locking themselves in and putting their lives at risk.

Risk of suffocation

- Keep packaging, plastic film and packaging parts out of the reach of children.

Risk of poisoning

- Keep detergents and care products out of the reach of children.

Risk of explosion

- Caused by detergents containing solvents, e.g. stain remover. Items of washing pre-treated with solvent naphtha may cause an explosion after being loaded into the washing machine. Rinse such items thoroughly by hand before putting them in the washing machine.

Risk of injury

- Washing machine door may become very hot.
- Take care when draining hot detergent solution.
- Do not climb on the washing machine.
- Do not lean on the washing machine door when it is open.
- Make sure that the pump cap is screwed on when the machine is running, avoid water leakage and touching the components of pump when they are in operation.



Important information



Preparing/Protecting the laundry and the machine

- Brush sand out of pockets and cuffs/collars.
- Check for metal items (paperclips, etc.).
- Trousers, knitwear and knitted textiles, e.g. jersey garments, T-shirts or sweatshirts should be turned inside out.
- Wash delicates in a net/bag (tights, curtains, underwired bras).
- Close zips, fasten pillow cases/cushion covers.
- Remove curtain runners or tie up in a net/bag.



Laundry with different levels of soiling

Light



Wash new items separately.

Do not prewash.

If required, pre-treat stains. Select + **Prewash** programme.

Heavy

Load less laundry. Select + **Prewash** programme.



Before washing for the first time

Do not put any laundry in the washing machine. Turn on the tap, fill approx. 1 litre of water and then pour ½ a measuring cup of detergent into dispenser II. Set the **Easy care** 40 °C programme and select **Start/Soaking**.
At the end of the programme, set the programme selector to **Off**.

Cleaning and care



- Risk of electric shock. Pull out the mains plug.
- Risk of explosion. No solvents.



Clean machine housing, control panel

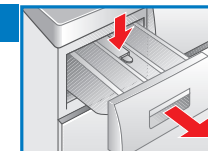
- Wipe with a soft, damp cloth.
- Do not use abrasive detergents.
- Immediately remove washing and cleaning agent residue.
- Do not clean the appliance with a water jet.



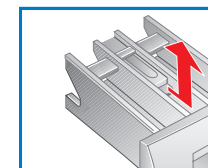
Clean the detergent drawer ...

... if it contains detergent or fabric softener residue.

1. Pull out, depress the insert and remove the drawer completely.



2. Remove insert: Press the insert upwards with your finger.



3. Clean the detergent dispenser and the insert with water and a brush.
4. Refit the insert and secure in place.
5. Insert the detergent drawer.



Leave the detergent drawer open so that residual water can evaporate.



Drum

Leave the washing machine door open so that the drum can dry.
Rust stains – use chlorine-free cleaning agent, not steel wool.



Descaling *No laundry in the machine!*

This should not be necessary if the detergent is dispensed correctly. However, follow the instructions of the descaler manufacturer.



Frost protection

If the washing machine is located in a room which is exposed to freezing temperatures, any residual water in both the pump and the water inlet hose must be drained every time after the machine is used.

- Draining the pump → Page 10 Detergent solution pump
- Draining the water inlet hose:

1. Turn the tap off.
2. Unscrew the hose from the tap and the rear of the appliance, drain out the water left inside the inlet hose.
3. Before the next wash, screw the hose back on and check for leaks.

Cleaning and care

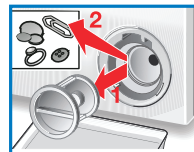
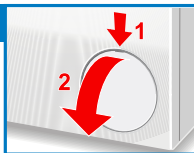


- Risk of scalding. Allow detergent solution to cool down.
- Turn off the tap.

Detergent solution pump

- Set the programme selector to **Off**, pull out the mains plug.

1. Open and remove the maintenance cover.
2. Carefully unscrew the pump cover - do not remove it completely.
3. Let the water drain into a shallow container (let the remainder drip onto a floor cloth). Repeat the operation until there is no water left.
4. Remove the pump cover. Remove foreign material/fluff from inside the pump.
5. Clean the interior, pump cover thread and pump housing (fan impeller in the detergent solution pump must be able to rotate).
6. Refit the pump cover and screw on tightly.
7. Insert the maintenance cover and close it.



To prevent unused detergent from flowing into the outlet during the next wash: pour 1 litre of water into dispenser **II** and start the **Spin/Empty** programme.

Filter in the water inlet hose

Reduce the water pressure in the supply hose:

1. Turn off the tap.
2. Select any programme (except **Spin/Empty**).
3. Press **Start/Soaking**. Leave programme running for approx. 40 seconds.
4. Set the programme selector to **Off**. Pull out the mains plug.

Clean the filter:

1. Remove the hose from the tap. Clean the filter with a small brush.

or

Remove the hose from the rear of the appliance. Remove filter with pliers and clean.

2. Reconnect the hose and check for leaks.



Consumption values

Programme	Additional function	Load	Electricity consumption**	Water**	Programme duration**
Cottons 40 °C	Speed Wash	3,5 kg	0,53 kWh	36 l	0:55 h
Cottons 60 °C *	-	6,0 kg	0,60 kWh	45 l	4:21 h
Easy care 40 °C	Speed Wash	2,6 kg	0,39 kWh	45 l	0:51 h
Mix 40 °C	Speed Wash	3,0 kg	0,43 kWh	32 l	0:42 h
Delicate/Silk 30 °C	Speed Wash	2,0 kg	0,27 kWh	35 l	0:38 h
Wool 30 °C	-	2,0 kg	0,22 kWh	35 l	0:43 h

* Programme setting for testing and energy labelling in accordance with GB standard.

** The values deviate from the indicated values depending on water pressure, hardness, and inlet temperature, ambiente temperature,type, amount and soiling of the laundry, detergent used, fluctuations in the power supply and selected additional functions.

Fault displays

E:17

- Tap turned on?
- Water inlet hose kinked or jammed?
- Filter blocked? Clean filter → *Page 10*
- Water pressure too low?

E:18

- Loose debris is blocking the pump, clean the pump → *Page 10*
- Drainage hose blocked?

Other displays Switch off the appliance, wait 5 seconds and switch it back on. If the display appears again, call customer service.

Customer service

- Before calling customer service, please check whether you can eliminate the fault yourself → page 13 *What to do if...*
- If you require advice, even during the warranty period, you will incur the costs for the callout of a technician.
- The contact details for all countries can be found in the enclosed after-sales service directory.
- When calling customer service, please give details of your address, telephone number, fault description, purchase date, product number (E-Nr.) and the production number (FD) of the appliance to prevent unnecessary callouts. This will save you additional costs.

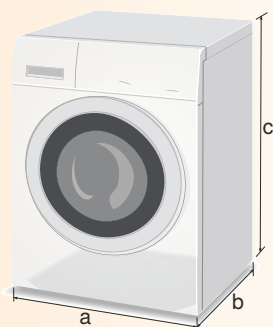
E-Nr. _____ FD _____

Product number Production number

These numbers are shown on the rating plate which can be found on the frame of the open door and also on the rear of the appliance.

Rely on the professionalism of the manufacturer. Please contact us. This will ensure that the repair is carried out by trained service technicians who arrive equipped with genuine spare parts for your appliance.

Technical specifications



a= 600 mm

b= 560 mm

c= 850 mm

Net weight 60 kg (WAX16161IN)

64 kg (WAX20168IN)

What to do if ...

- Water is running out.
 - Fit/refit drainage hose.
 - Tighten screw-fitting on the supply hose.
- Water not flowing in. Detergent not washed in.
 - **Start/Soaking** not selected?
 - Tap not open?
 - Filter blocked? Clean filter → Page 10.
 - Water inlet hose kinked or jammed?
- Washing machine door cannot be opened.
 - Safety function active. Programme stopped?
 - Water in drum? Select **Spin/Empty** programme.
- Programme does not start.
 - **Start/Soaking** not selected or is selected?
 - The symbol flashes, washing machine door not closed properly.
- Detergent solution is not drained.
 - Clean detergent solution pump → Page 10.
 - Clean drainage hose.
- Additional function could not be activated for the selected programme.
 - Can the additional function be selected? → Page 7, programme overview.
- Water not visible in the drum.
 - Not a fault - water below the visible area.
- Spin cycle actuated several times.
 - Not a fault - unbalanced load detection system adjusts imbalance.
- Detergent in chamber I is not washed away.
 - **+ Prewash** programme not selected?
- Detergent residue in the detergent dispenser
 - Detergent is damp or lumpy, clean the detergent dispenser → Page 9.
 - Use the dosing aid for liquid detergent.
- Foam is emerging from the detergent drawer. The symbol flashes
 - Too much detergent used?
 - Mix 1 tablespoon of fabric conditioner with ½ a litre of water and pour into dispenser II in the detergent drawer.
 - Reduce detergent dosage for the next wash cycle.
- Excessive noise, vibration and "wandering" during spin cycle.
 - Appliance feet fixed? Secure appliance feet → *Installation instructions*.
 - Transportation bolt removed? Remove transportation bolt → *Installation instructions*.
- Display panel/indicator lights do not function while the appliance is running.
 - Power failure?
 - Circuit breaker tripped? Reset the circuit breaker/change the fuse.
 - If the fault occurs repeatedly, contact customer service.
- Programme sequence longer than usual
 - Not a fault-unbalanced load detection system is adjusting the imbalance by repeatedly distributing the laundry.
 - Not a fault-foam detection system active.
- Detergent residues on the laundry
 - Occasionally, phosphate-free detergents contain water-insoluble residues.
 - Select **Rinse plus** for the next wash cycle or brush the laundry after washing.
- Washing result not satisfactory
 - Soiling is greater than expected? Select a suitable programme.
 - Detergent is underdosed?
- If you cannot correct a fault yourself or a repair is required:
 - Set the programme selector to **Off** and pull the mains plug out of the socket.
 - Turn off the tap and call customer service.



Washing machine WAX16161IN
WAX20168IN



BOSCH

en Instruction manual