

# Your washing machine

**Congratulations** on having opted for a modern, high-quality domestic appliance manufactured by Bosch. This washing machine is distinguished by its economical energy consumption. Each machine that leaves our factory has been inspected thoroughly to ensure that it functions properly and is in perfect condition.

For further information on our products, accessories, spares and services, consult our website [www.bosch-home.com](http://www.bosch-home.com) or contact any of our customer service centres.

You can find the contact details for your nearest after-sales service here or in the after-sales service directory (depending on model).  
 – **GB** 0844 8928979 (calls from a BT landline will be charged at up to 3 pence per minute. A call set-up fee of up to 6 pence may apply)  
 – **IE** 01450 2655 (0.03 € per minute at peak. Off peak 0.0088 € per minute)

## Environmentally friendly waste disposal

All packaging must be disposed of in accordance with environmental guidelines. This appliance is certified in accordance with European Directive 2012/19/EU on the waste electrical and electronic equipment (WEEE). This directive provides the framework for the EU-wide collection and reuse of used appliances.

| Contents                            | Page |
|-------------------------------------|------|
| Intended use                        | 1    |
| Programmes                          | 1    |
| Setting and adjusting the programme | 3    |
| Washing                             | 3/4  |
| After washing                       | 4    |
| Individual settings                 | 5/6  |
| Important information               | 6    |
| Overview of programmes              | 7    |
| Safety instructions                 | 8    |
| Consumption values                  | 8    |
| Care and cleaning                   | 9    |
| Information on the display panel    | 9    |
| Maintenance                         | 10   |
| What to do if ...                   | 11   |

## Protection of the environment/Conservation tips

- Always fill the washing machine with a maximum amount of laundry for the relevant programme.
- Wash normally soiled laundry without a pre-wash.
- The selectable temperatures apply to the care labels on the textiles. The temperatures in the machine may deviate from this so that you get the optimum mix of energy-saving and washing results.
- Measure the detergent according to the manufacturer's instructions and water hardness.
- If the laundry is then dried in the tumble dryer, select spin speed according to instructions of dryer manufacturer.

## Intended use

- for domestic use only,
- for washing machine-washable fabrics and hand-washable wool in detergent solution,
- to be operated with cold or cold and hot (max. 60 °C) drinking water, depending on model, and commercially available detergents and care products which are suitable for use in washing machines.

- ⚠ – Follow the safety instructions on page 8!
- ⚠ – Do not leave children unattended near the washing machine.
- ⚠ – The washing machine is not to be used by children or persons not familiar with the operating instructions.
- ⚠ – Keep pets away from the washing machine.

Do not switch on the washing machine until you have read these instructions and the separate Installation instructions!

## Preparation

**Correct installation according to the separate installation actions.**

**Checking the machine**  
 – Never use a damaged machine!  
 – Contact customer service!

**Connecting the mains plug**  
 ⚠ Make sure your hands are dry!  
 Handle the plug only!

**Turning on the tap**  
 Turn the tap on to supply water to the machine.

## Sorting and loading laundry

Follow the manufacturer's care information! Sort laundry according to the label's indications. And according to type, colour, soiling and temperature. Do not exceed the maximum load → Page 7.

**Observe important information!** → Page 6  
 Wash laundry of different sizes in the same wash programme. Close the door. Take care not to trap items of laundry between the washing machine door and seal.

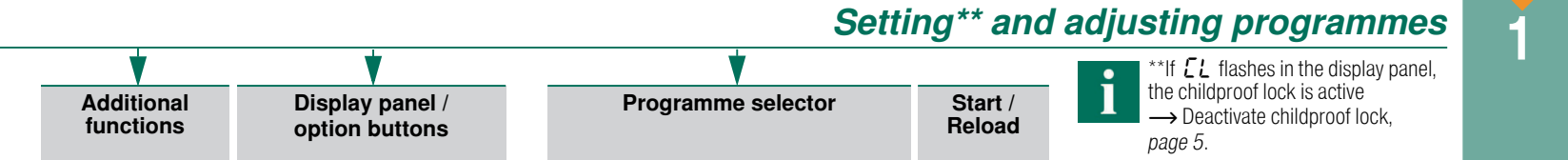
**Add detergent and care products**  
 Measure detergent according: amount of laundry, soiling, water hardness (ask your water supply company) and manufacturer's instructions.  
 For models without insert for liquid detergent: Pour liquid detergent into the appropriate dispenser and place in the drum.

**Measure detergent according:** amount of laundry, soiling, water hardness (ask your water supply company) and manufacturer's instructions.  
 For models without insert for liquid detergent: Pour liquid detergent into the appropriate dispenser and place in the drum.

**Compartment II:** detergent for the main wash, water softener, bleach, stain remover  
**Compartment I:** Detergent for prewash

**Insert for liquid detergent (depending on model)** → page 6  
 Dilute viscous fabric softener and fabric conditioner with water. This prevents blockages.

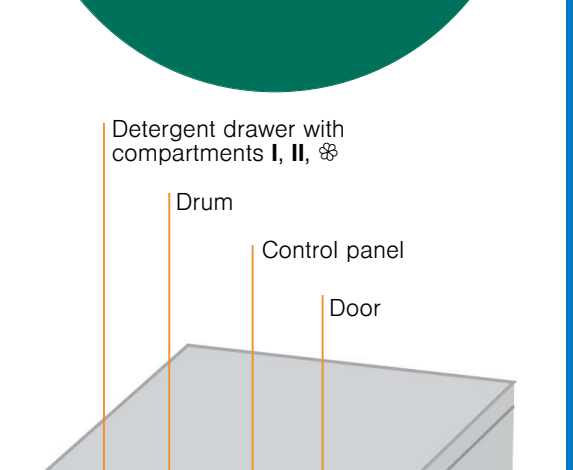
## Setting\*\* and adjusting programmes



| Additional functions | Display panel / option buttons        | Programme selector  | Start / Reload      |
|----------------------|---------------------------------------|---|---------------------|
| SpeedPerfect         | Spin 1200, 1000, 800, 400, Rinse Hold | Easy-Care, Delicate/Silk, Wool, SuperQuick 15', Drain, Rinse/Spin | Start/Reload button |
| EcoPerfect           | Wash, Rinse, Spin, End                |   |                     |
| Reduced Ironing      |                                       |   |                     |
| Aqua Plus            |                                       |   |                     |

|                   |  |
|-------------------|--|
| 1 - 24 (Ready in) | End of programme after ...                             |
| Status displays   | Programme sequence displays:<br>Wash, rinse, spin, end |
| Rinse Hold        | without final spin                                     |
| Childproof lock   | → page 5   |

## Washing



## End of programme when ...

... **Start/Reload** flashes and **-** appears on the display panel.  
 Note: If display panel lighting is switched off, press any button → Energy saving mode, page 5.

## Interrupting the programme

- Programmes at high temperatures:  
 – Cool washing: Select **Rinse/Spin**.  
 – Press **Start/Reload**.  
 Programmes at lower temperatures:  
 – Select **Rinse/Spin** (deactivate **Aqua Plus** button) or **Drain**.  
 – Press **Start/Reload**.

## Changing the programme if ...

- ... you have selected the wrong programme by mistake:  
 – Reselect the programme.  
 – Press **Start/Reload**. The new programme starts from the beginning.

## Reloading laundry if ...

... Press **Start/Reload**. **YES** is displayed on the display panel. If **NO** is lit, the washing machine door cannot be opened. Press **Start/Reload**.

## Removing the washing

Open the washing machine door and remove the washing. If **Rinse Hold** (without final spin) is active: turn the programme selector to **Drain** or select the spin speed. Choose **Start/Reload**.

- Remove any foreign objects. Risk of rusting.
- Leave the washing machine door and detergent door open so that any residual water can evaporate.

## Turn the tap off

Not required for Aqua-Stop models → Refer to Installation instructions.

## Switching off

Turn the programme selector to **Off**.

## Individual settings

**Option button (Ready in)**  
 When a programme is selected, its duration is displayed. You can delay the end of the programme before it begins. The ready-in-time can be set in increments of one hour up to a maximum of 24 hours. Press the **(Ready in)** button until the required number of hours is displayed (h = hour). Choose **Start/Reload**. Once the programme has begun, no further adjustment is possible.

**(Spin speed in rpm/ Rinse Hold (without final spin))**  
 You can change the displayed spin speed or choose **Rinse Hold** (without final spin, laundry soaks in the last rinsing water, display panel ---). The maximum selectable spin speed depends on the model and which programme is currently selected.

**Additional functions** → Overview of programmes, page 7  
 SpeedPerfect For washing in a shorter time with a washing outcome comparable to that of the standard programme. Maximum load → Overview of programmes, page 7.

**EcoPerfect** Energy-optimised washing by reducing the temperature while achieving a consistent washing result. The washing temperature is lower than the selected temperature. For special hygiene requirements, it is recommended that a higher temperature be selected or the **SpeedPerfect** option.

**Reduced Ironing** Special spin sequence with subsequent fluffing. Gentle final spin: residual moisture in the laundry slightly increased.

**Aqua Plus** Increased water level and additional rinse cycle, extended washing time. For areas with very soft water or for further enhancing the spin result.

**Childproof lock**  
 You can lock the washing machine to prevent the functions you have set from being changed inadvertently.  
**To activate:** press and hold the **Start/Reload** button for approx. 5 seconds after the programme has started. **CL** appears in the display panel for approx. 5 seconds, then the Finish-in time is shown again.  
**To deactivate:** press and hold the **Start/Reload** button for approx. 5 seconds.  
 Note: If a button is pressed when the childproof lock is active, **CL** lights up for approx. 5 seconds, then the Finish-in time is displayed again.  
**CL** lights up continuously if the programme selector is adjusted when the Childlock is active.

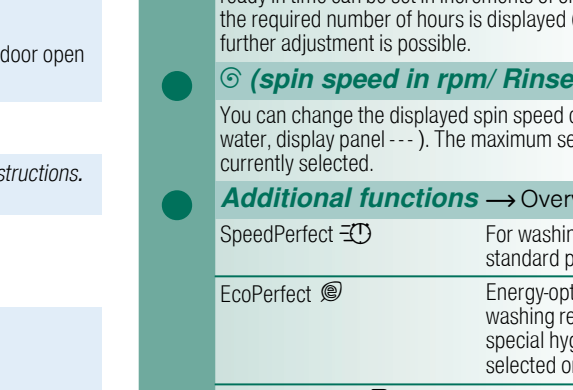
**Reloading**  
**YES** in the display panel  
 Press **Start/Reload** if you want to add additional items of laundry after the programme has started. The machine checks whether reloading is possible.  
**YES** lits: reloading is possible.  
**NO** flashes: wait until **YES** lights.  
 Note: do not open the door until **YES** is lit.  
**NO**: it is not possible to reload.  
 Note: for safety reasons, the washing machine door remains locked when the water level and/or temperature is high, or during spinning.  
 To continue the programme, press the **Start/Reload** button.

**Energy saving mode**  
 The display panel lighting goes out after a few minutes, **Start/Reload** flashes. Press any button to switch on the lighting.

**Start/Reload**  
 To start the programme or to subsequently load additional laundry, and to activate/deactivate the childproof lock.

## Individual settings

**Signal**  
 1. Activating the mode for setting the signal volume  
 2. Setting the volume for...  
 Button signals Information signals  
 setting the volume\* \* if necessary, select the function several times



## Individual settings

**Protecting the laundry and the machine**  
 – When determining the dosage of all washing powders, additives and cleaning agents, you must follow the manufacturer's instructions.  
 – Empty all pockets  
 – Check for metal items (paper-clips, etc.)  
 – Wash delicates in a laundry bag (tights, curtains, underwired bras).  
 – Fasten zips, do up any buttons.  
 – Brush sand out of pockets and collars.  
 – Remove curtain fittings or place in the laundry bag.

**Laundry with varying degrees of soiling**  
 light Do not prewash. If required, choose the additional function **SpeedPerfect**.  
 Pre-treat any stains as necessary.  
 intense wash Load less laundry. Choose a programme with a prewash.

**Soaking** Load laundry of the same colour.  
 Pour soaking agent/detergent into compartment II in accordance with the manufacturer's instructions. Turn the programme selector to **Cottons 30 °C** and press **Start/Reload**. After approx. 10 minutes, press **Start/Reload** to pause the programme. Once the required soaking time has elapsed, press **Start/Reload** again to continue the programme, or select a different programme.

**Starch** Laundry should not be treated with fabric softener.  
 Starching is possible in all wash programmes if liquid starch is used. Pour the starch in accordance with the manufacturer's instructions into fabric softener compartment (rinse first if necessary).

**Dyeing / Bleaching**  
 Dye should only be used in normal household quantities. Salt may damage stainless steel. Always follow the dye manufacturer's instructions. Do not use the washing machine for bleaching clothes.

**Insert for liquid detergent** depending on model  
 Position the insert for dispensing liquid detergent:  
 – Remove the detergent drawer completely → page 9  
 – Slide the insert forwards and click into place.  
 Do not use the insert (slide upwards): for gel detergents and washing powder, for programmes with **Prewash** and end time option.

| Programmes             | °C                    | max.   |
|------------------------|-----------------------|--|
| <b>Cottons</b>         | 20, 30, 40, 60, 90 °C | 8 kg/<br>4 kg*<br>washed at 90 °C  |
| <b>Prewash</b>         | 40 °C                 |  |
| <b>Easy-Care</b>       | 30, 40 °C             | easy-care cotton, linen, synthetic or blended fabrics  |
| <b>Mixed Load</b>      | 40 °C                 | 3.5 kg<br>cotton or synthetic fabrics  |
| <b>Delicate/Silk</b>   | 30 °C                 | for delicate fabrics, e.g., silk, satin, synthetic fibres or blended fabrics (e.g. curtains) |
| <b>Wool</b>            | cold, 30 °C           | hand/machine washable wool   |
| <b>Super Quick 15'</b> | 30 °C                 | synthetic cotton, linen, synthetic fibres or blended fabrics                                 |

**Additional programmes**  
 \* reduced load with additional function **SpeedPerfect**   
 For programmes without prewash, add detergent to compartment II. For prewash programmes, distribute the detergent between compartments I and II.



Robert Bosch Hausgeräte GmbH  
 Carl-Wery Str. 34  
 81739 Munich / Germany

WAQ2436SGB / ...

## ! Safety instructions

- Carefully read the instruction manual and the information enclosed, and act accordingly.
- Keep the machine's documentation for future reference.

**Risk of electric shock!**

- Never pull the cable to disconnect the mains plug!
- Never insert/disconnect the mains plug with damp hands.

**Danger to life!**

For worn-out appliances:

- Disconnect the mains plug.
- Sever the mains cable and discard along with the plug.
- Destroy the lock on the washing machine door. This will prevent children from locking themselves in and risking their lives.

**Danger of suffocation!**

**Risk of poisoning!**

**Risk of explosion!**

- Keep packaging, film and packaging parts out of the reach of children.
- Items of laundry pretreated with cleaning agents containing solvents, e.g. stain remover/cleaning solvent may lead to an explosion after being loaded into the washing machine.
- Rinse items of laundry thoroughly by hand beforehand.

**Risk of injury!**

- The washing machine door may become very hot.
- Be careful when draining hot detergent solution.
- Do not climb onto the washing machine.
- Do not lean on the open washing machine door.
- Do not reach into the drum if it is still rotating.
- Be careful when opening the detergent drawer while the machine is in operation.

### Consumption values depending on model

| Programme           | Load   | Electricity*** | Water*** | Programme duration*** |
|---------------------|--------|----------------|----------|-----------------------|
| Cottons 20 °C       | 8 kg   | 0.37 kWh       | 68 l     | 2 ½ h                 |
| Cottons 40 °C*      | 8 kg   | 1.05 kWh       | 68 l     | 2 ¾ h                 |
| Cottons 60 °C       | 8 kg   | 1.15 kWh       | 68 l     | 2 ¾ h                 |
| Cottons 90 °C       | 8 kg   | 2.30 kWh       | 80 l     | 2 ¾ h                 |
| Easy-Care 40 °C*    | 3.5 kg | 0.64 kWh       | 55 l     | 1 ¾ h                 |
| Mixed Load 40 °C    | 3.5 kg | 0.54 kWh       | 47 l     | 1 h                   |
| Delicate/Silk 30 °C | 2 kg   | 0.19 kWh       | 34 l     | ¾ h                   |
| Wool 30 °C          | 2 kg   | 0.17 kWh       | 39 l     | ¾ h                   |

\* Programme setting for testing in accordance with valid standard EN60456.  
 Note on comparative tests: For testing the test programmes, wash the specified load using the maximum spin speed.

| Programme        | Additional function | Load   | Annual energy consumption | Annual water consumption |
|------------------|---------------------|--------|---------------------------|--------------------------|
| Cottons 40/60 °C | EcoPerfect          | 8/4 kg | 179 kWh                   | 8700 l                   |

\*\* Programme setting for testing and energy labelling in accordance with EU directive 2010/30/EU with cold water (15 °C).  
 \*\*\* The values deviate from the indicated values depending on water pressure, hardness, and inlet temperature, ambient temperature, type, amount and soiling of the laundry, detergent used, fluctuations in the power supply and selected additional functions.

## Care and cleaning

**! Risk of electric shock!** Disconnect the mains plug.  
**! Risk of explosion!** Do not use solvents.

**i Before the first wash**  
 Do not put laundry in the machine! Turn on the tap. Put into compartment II:  
 - approx. 2 litres of water  
 - detergent (measure according to the manufacturer's instructions for lightly soiled laundry and water hardness)  
 Turn the programme selector to **Cottons** **60 °C**, additional function **SpeedPerfect** and press **Start/Reload** . At the end of the programme, turn the programme selector to **Off**.

**i Machine housing, control panel**  
 - Remove detergent and cleaning agent residue.  
 - Wipe with a soft, damp cloth.  
 - Do not wash the machine with a jet of water!

**Hand icon** **Cleaning the detergent drawer ...**  
 ... if it contains detergent or fabric softener residues.

- Pull out, press insert down and remove drawer completely.
- To remove the insert: press upwards from below with your finger.
- For models with insert for liquid detergent: Slide the insert upwards and remove it from the back.
- Clean the detergent dispenser tray and inserts with water and a brush and dry them.
- Attach the insert and engage (connect the cylinder to the guide pin).
- Push in the detergent drawer.

**i** Leave the detergent drawer open so that any residual water can evaporate.

**i Drum**  
 Leave the washing machine door open so that the drum can dry out.  
 For rust stains, use chlorine-free cleaning agent, not steel wool.

**i Descaling** *Ensure there is no laundry in the machine!*  
 This will not be necessary if the correct dosage of detergent is used. If it is, descale the appliance according to the manufacturer's instructions. Descaling products can be acquired on the website or from customer services → *Installation instructions*.

**i Emergency release** *(e.g. in the event of a power cut)*  
 The programme continues to run when the power has been restored. However, if the laundry has to be removed, the washing machine door can be opened as follows:

**! Risk of scalding!**  
 The detergent solution and laundry may be hot. Let it cool.  
 Do not reach into the drum if it is still rotating.  
 Do not open the washing machine door if water can be seen through the glass.

- Turn the programme selector to **Off** and disconnect the mains plug.
- Drain the detergent solution → *page 10*.
- Pull the emergency release downwards with a tool and release. The washing machine door can then be opened.

## Information on the display panel depending on model

**E: 15** Close the washing machine door properly; laundry may be caught.

**E: 17** Turn on the (cold water) tap fully, supply hose kinked or trapped;  
**E: 29** Clean the filter → *page 10*, water pressure too low.

**E: 18** - Detergent solution pump blocked; Clean the detergent solution pump → *page 10*.  
 - Drainage hose / waste pipe blocked; Clean the drainage hose at the siphon → *page 10*.  
 - Heavy foam build-up → *page 11*, status indicator **Wash** flashes.

**E: 23** Water in the base tub, appliance leaking. Call customer services!

**R: 10** - Open the (hot water) tap fully.  
 - Inlet hose kinked/trapped.  
 - Water pressure too low. Clean the filter → *page 10*.  
 - Hot water hose not connected; appliance will operate using cold water only. Ignore information, only for first wash cycle.

**CL** Childproof lock activated: to deactivate → *page 5*.

## Maintenance

**Hand icon** **Detergent solution pump**  
 Turn the programme selector to **Off** and disconnect the mains plug.

- Using a screwdriver or the insert for liquid detergent (depending on model), open and remove the service flap.
- Remove the folding gutter and place a large enough container underneath.
- For models with a drainage hose:** Remove the drainage hose from the retainer and pull it from the housing. Remove the sealing cap, allow the detergent solution to flow out into the container. Replace the sealing cap and place the drainage hose in the retainer.

**3\* For models without a drainage hose:** Carefully unscrew the pump cover 180° or until the detergent solution begins to flow out on the folding gutter. When the container is full, close the pump cover and empty the container. Repeat the above steps until all the detergent solution has completely drained out.

**4.** Carefully unscrew the pump cover (there may be residual water).  
**5.** Clean the interior, pump cover thread and pump housing (the impeller in the detergent solution pump must rotate).  
**6.** Replace the pump cover and screw it tightly.  
**7.** Return the drainage hose (depending on model) and the folding gutter to their start position.  
**8.** Place the service flap back on and close.

To prevent unused detergent from flowing straight into the drain during the next wash: Pour 2 litres of water into compartment **II** and then start the **Drain** programme.

**Hand icon** **Drainage hose at the siphon**  
 Turn the programme selector to **Off** and disconnect the mains plug.

- Loosen the hose clamp, carefully remove the drainage hose (residual water).
- Clean the drainage hose and siphon connecting piece.
- Reattach the drainage hose and secure the connection with the hose clamp.

**Hand icon** **Filter in the water supply**  
**! Risk of electric shock!**  
 Do not immerse the Aqua-Stop safety device in water (contains an electric valve).

Reduce the water pressure in the supply hose:

- Turn off the tap.
- Select any programme (except // ).
- Choose **Start/Reload**. Let the programme run for approximately 40 seconds.
- Turn the programme selector to **Off**. Disconnect the mains plug. Clean the filter:

**5.** Disconnect the hose from the tap. Clean the filter using a small brush.  
**and/or** for Standard and Aqua-Secure models: Remove the hose on the rear of the appliance. Remove the filter with pliers and clean.

**6.** Connect the hose and check for leaks.

## What to do if...

|   |   |
|---|---|
| Water is leaking out  | - Attach/replace the drainage hose correctly.<br>- Tighten the screw connection of the supply hose.   |
| No water supply. Detergent not dispensed.   | - <b>Start/Reload</b> not selected?<br>- Tap not on?<br>- Filter blocked? Clean the filter → <i>page 10</i> .<br>- Supply hose kinked or trapped?   |
| The appliance door will not open.   | - Safety function active. Programme stopped? → <i>page 4</i> .<br>- <b>Rinse Hold</b> (without final spin) selected? → <i>page 3, 4</i> .<br>- Can be opened by emergency release only? → <i>page 9</i> .<br>- Door locked after the washing machine is switched off: Switch on the washing machine and wait for 5 seconds. |
| The selected programme does not start.  | - <b>Start/Reload</b> or  ( <b>Ready in</b> ) time selected?<br>- Washing machine door closed?<br>- Childproof lock active? Deactivate → <i>page 5</i> .  |
| Detergent solution is not drained.  | - <b>Rinse Hold</b> (without final spin) selected? → <i>page 3, 4</i> .<br>- Clean the detergent solution pump → <i>page 10</i> .<br>- Clean the waste pipe and/or drainage hose.   |
| No water can be seen in the drum.   | - Not a fault. Water remains inside below the visible area.   |
| Spin result not satisfactory. Laundry wet/too damp.                               | - Not a fault. Spin control system has stopped the spin cycle. Uneven distribution of laundry. Distribute large and small items of laundry evenly in the drum.<br>- <b>Reduced Ironing</b> selected? → <i>page 5</i> .<br>- Selected speed too low? → <i>page 5</i> .   |
| Programme duration changes suddenly during operation.                             | - Not a fault. The program time can vary according to the distribution of laundry, with it therefore being possible for the display panel to show adjustments in the duration.  |
| Spin cycle performed several times.   | - Not a fault. The balance control system has detected an imbalance and is attempting to redress this by repeating the spin.  |
| Residual water in the compartment for care products.                              | - Not a fault: the action of the care product is not affected.<br>- Clean the compartment if necessary → <i>page 9</i> .  |
| Odour formation in the washing machine.   | - Run programme <b>Cottons</b> <b>90 °C</b> without laundry. Use standard detergent.  |
| Status display <b>Wash</b> flashing. Appliance has detected a detergent overload. | - Too much detergent used?<br>If foam is escaping from the detergent drawer: mix 1 tablespoon of fabric softener with ½ litre of water and pour into compartment <b>II</b> (not with outdoor or down fabrics).<br>- Reduce the detergent dosage for the next wash cycle.  |
| Intense noise formation, vibrations and "wandering" during the spin cycle.        | - Are the appliance feet fixed?<br>Secure the appliance feet → <i>Installation instructions</i> .<br>- Transportation safety devices removed?<br>Remove transportation safety devices → <i>Installation instructions</i> .  |
| Display panel/indicator lamps remain turned off while the machine is working.     | - Energy-saving mode → <i>page 5</i> .<br>- Power cut?<br>- Fuses triggered? Reset/change the fuse.<br>- If the fault occurs repeatedly, call customer services.  |
| Programme sequence longer than usual.   | - Not a fault. Unbalanced load detection system adjusts imbalance by repeatedly distributing the laundry.<br>- Not a fault: foam detection system active; adds an additional rinse cycle.   |
| Detergent residues on the laundry.  | - Occasionally, phosphate-free detergents contain water-insoluble residues.<br>- Select <b>Rinse/Spin</b> or brush out the laundry after washing.   |

If you cannot correct a fault yourself or if a repair is necessary:  
 - Turn the programme selector to **Off** and remove the mains plug from the socket.  
 - Turn off the water supply and call customer services → *Installation instructions*.

Register your new Bosch now:  
[www.bosch-home.com/welcome](http://www.bosch-home.com/welcome)

**Washing machine**  
**WAQ2436SGB / ...**

**BOSCH**

# Your washing machine

**Congratulations** on having opted for a modern, high-quality domestic appliance manufactured by Bosch. This washing machine is distinguished by its economical energy consumption.

Each machine that leaves our factory has been inspected thoroughly to ensure that it functions properly and is in perfect condition.

For further information on our products, accessories, spares and services, consult our website [www.bosch-home.com](http://www.bosch-home.com) or contact any of our customer service centres.

You can find the contact details for your nearest after-sales service here or in the after-sales service directory (depending on model).

- **GB** 0844 8928979 (calls from a BT landline will be charged at up to 3 pence per minute. A call set-up fee of up to 6 pence may apply)
- **IE** 01450 2655 (0.03 € per minute at peak. Off peak 0.0088 € per minute)

## Environmentally friendly waste disposal



All packaging must be disposed of in accordance with environmental guidelines. This appliance is certified in accordance with European Directive 2012/19/EU on the waste electrical and electronic equipment (WEEE). This directive provides the framework for the EU-wide collection and reuse of used appliances.

## Contents

|   | Page |
|---|------|
| ■ Intended use .....                        | 1    |
| ■ Programmes .....                          | 1    |
| ■ Setting and adjusting the programme ..... | 3    |
| ■ Washing .....                             | 3/4  |
| ■ After washing .....                       | 4    |
| ■ Individual settings .....                 | 5/6  |
| ■ Important information .....               | 6    |
| ■ Overview of programmes .....              | 7    |
| ■ Safety instructions .....                 | 8    |
| ■ Consumption values .....                  | 8    |
| ■ Care and cleaning .....                   | 9    |
| ■ Information on the display panel .....    | 9    |
| ■ Maintenance .....                         | 10   |
| ■ What to do if ... ..                      | 11   |



### Protection of the environment/Conservation tips

- Always fill the washing machine with a maximum amount of laundry for the relevant programme.
- Wash normally soiled laundry without a pre-wash.
- The selectable temperatures apply to the care labels on the textiles. The temperatures in the machine may deviate from this so that you get the optimum mix of energy-saving and washing results.
- Measure the detergent according to the manufacturer's instructions and water hardness.
- If the laundry is then dried in the tumble dryer, select spin speed according to instructions of dryer manufacturer.

## Intended use

- for domestic use only,
- for washing machine-washable fabrics and hand-washable wool in detergent solution,
- to be operated with cold or cold and hot (max. 60 °C) drinking water, depending on model, and commercially available detergents and care products which are suitable for use in washing machines.



- Follow the safety instructions on page 8!
- Do not leave children unattended near the washing machine.
- The washing machine is not to be used by children or persons not familiar with the operating instructions.
- Keep pets away from the washing machine.



Do not switch on the washing machine until you have read these instructions and the separate Installation instructions!

## Programmes

Detailed overview of programmes → page 7.  
Spin speed can be selected individually, irrespective of the selected programme and programme progress.

|                        |  |
|------------------------|--|
| <b>Cottons</b>         | hard-wearing fabrics   |
| <b>Prewash</b>         | hard-wearing fabrics, prewash  |
| <b>Mixed Load</b>      | Different types of laundry   |
| <b>Rinse/Spin</b>      | Laundry washed by hand, <b>Aqua Plus</b> button activated; if only using the spin cycle, deactivate the button |
| <b>Drain</b>           | Drain rinsing water with <b>Rinse Hold</b> (without final spin)  |
| <b>Super Quick 15'</b> | Short programme  |
| <b>Wool</b>            | Hand/machine washable wool   |
| <b>Delicate/Silk</b>   | Delicate washable fabrics  |
| <b>Easy-Care</b>       | synthetic fabrics  |

## Preparation



Correct installation according to the separate installation actions.



### Checking the machine

- Never use a damaged machine!
- Contact customer service!



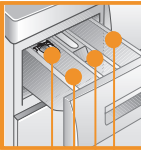
### Connecting the mains plug



Make sure your hands are dry! Handle the plug only!



### Turning on the tap



Insert for liquid detergent (depending on model) → page 6

**Compartment II:** detergent for the main wash, water softener, bleach, stain remover

**Compartment** : Fabric softener, bleach

**Compartment I:** Detergent for prewash

| Additional functions   | Display panel / option buttons   | Programme  |
|--|--|--|
| Speed Perfect<br>Eco Perfect<br>Reduced Ironing<br>Aqua Plus | Spin<br>○ 1200<br>○ 1000<br>○ 800<br>○ 400<br>○ Rinse Hold<br>Wash<br>Rinse<br>Spin<br>End | Easy-Care<br>30°<br>40°<br>Delicate/Silk<br>30°<br>cold<br>Wool<br>30°<br>SuperQuick 15'<br>30°<br>Drain |
|  | 1 - 24  (Ready in)   | End of programme after ...   |
|  | Status displays  | Programme sequence displays:<br>Wash, rinse, spin, end   |
|  | Rinse Hold   | without final spin   |
|  |  | Childproof lock → page 5   |

Before the first wash, run a wash cycle with no laundry in the machine → Page 9.

## Sorting and loading laundry

Follow the manufacturer's care information! Sort laundry according to the label's indications. And according to type, colour, soiling and temperature. Do not exceed the maximum load → Page 7.

Observe important information! → Page 6

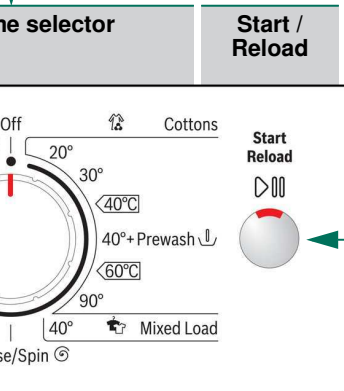
Wash laundry of different sizes in the same wash programme. Close the door. Take care not to trap items of laundry between the washing machine door and seal.

## Add detergent and care products

Measure detergent according: amount of laundry, soiling, water hardness (ask your water supply company) and manufacturer's instructions. For models without insert for liquid detergent: Pour liquid detergent into the appropriate dispenser and place in the drum.

**i** Dilute viscous fabric softener and fabric conditioner with water. This prevents blockages.

## Setting\*\* and adjusting programmes



**i** \*\*If flashes in the display panel, the childproof lock is active → Deactivate childproof lock, page 5.

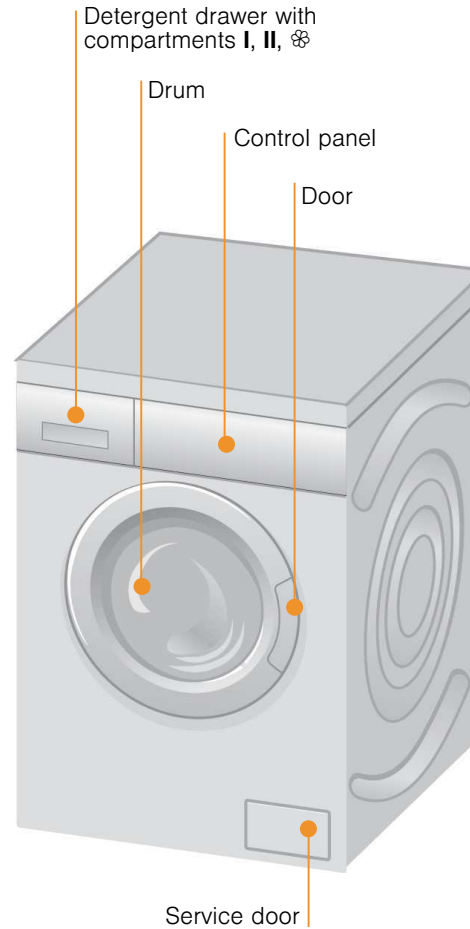
Additional functions and option buttons → Individual settings, page 5.

Press **Start/Reload**

**i** All buttons are sensitive and need only to be touched lightly. Press and hold the (Ready in) option button for an automatic run through all setting options.

**i** Programme selector for switching the machine on and off and for selecting the programme. Can be turned in either direction.

# Washing



1

2

3

# Washing

## Removing the washing

Open the washing machine door and remove the washing. If **Rinse Hold** (without final spin) is active: turn the programme selector to **Drain** or select the spin speed. Choose **Start/Reload**.

**i** - Remove any foreign objects. Risk of rusting.  
- Leave the washing machine door and detergent door open so that any residual water can evaporate.

## Turn the tap off

Not required for Aqua-Stop models → Refer to Installation instructions.

## Switching off

Turn the programme selector to **Off**.

## End of programme when ...

... Start/Reload flashes and - - appears on the display panel.  
*Note:* If display panel lighting is switched off, press any button → Energy saving mode, page 5.

## Interrupting the programme

Programmes at high temperatures:  
- Cool washing: Select **Rinse/Spin** .

Programmes at lower temperatures:  
- Select (deactivate **Aqua Plus** button) or **Drain** .

- Press **Start/Reload**.

## Changing the programme if ...

... you have selected the wrong programme by mistake:  
- Reselect the programme.  
- Press **Start/Reload**. The new programme starts from the beginning.

## Reloading laundry if ... → page 5

... Press **Start/Reload**; **SES** is displayed on the display panel. If is lit, the washing machine door cannot be opened. Press **Start/Reload**.

# Individual settings

## Option button ☹ (Ready in)

When a programme is selected, its duration is displayed. You can delay the end of the programme before it begins. The ready in-time can be set in increments of one hour up to a maximum of 24 hours. Press the ☹ (**Ready in**) button until the required number of hours is displayed (h = hour). Choose ▶ Start/Reload. Once the programme has begun, no further adjustment is possible.

## ⌚ (spin speed in rpm/ Rinse Hold (without final spin))

You can change the displayed spin speed or choose **Rinse Hold** (without final spin, laundry soaks in the last rinsing water, display panel ---). The maximum selectable spin speed depends on the model and which programme is currently selected.

## Additional functions → Overview of programmes, page 7

SpeedPerfect ⚡ For washing in a shorter time with a washing outcome comparable to that of the standard programme. Maximum load → Overview of programmes, page 7.

EcoPerfect 🌿 Energy-optimised washing by reducing the temperature while achieving a consistent washing result. The washing temperature is lower than the selected temperature. For special hygiene requirements, it is recommended that a higher temperature be selected or the **SpeedPerfect** ⚡ option.

Reduced Ironing 🧺 Special spin sequence with subsequent fluffing. Gentle final spin: residual moisture in the laundry slightly increased.

Aqua Plus 🌊 Increased water level and additional rinse cycle, extended washing time. For areas with very soft water or for further enhancing the spin result.

## Childproof lock

🔒 in the display panel You can lock the washing machine to prevent the functions you have set from being changed inadvertently.

**To activate:** press and hold the ▶ Start/Reload button for approx. 5 seconds after the programme has started. 🔒 appears in the display panel for approx. 5 seconds, then the Finish-in time is shown again.

**To deactivate:** press and hold the ▶ Start/Reload button for approx. 5 seconds.

*Note:* If a button is pressed when the childproof lock is active, 🔒 lights up for approx. 5 seconds, then the Finish-in time is displayed again.

🔒 lights up continuously if the programme selector is adjusted when the Childlock is active.

## Reloading

YES in the display panel Press ▶ Start/Reload if you want to add additional items of laundry after the programme has started. The machine checks whether reloading is possible.

YES lights: reloading is possible.

NO flashes: wait until YES lights.

*Note:* do not open the door until YES is lit.

NO: it is not possible to reload.

*Note:* for safety reasons, the washing machine door remains locked when the water level and/or temperature is high, or during spinning.

To continue the programme, press the ▶ Start/Reload button.

## Energy saving mode

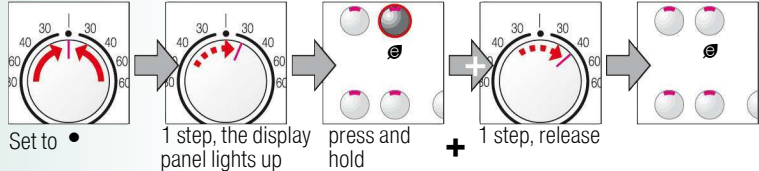
The display panel lighting goes out after a few minutes, ▶ Start/Reload flashes. Press any button to switch on the lighting.

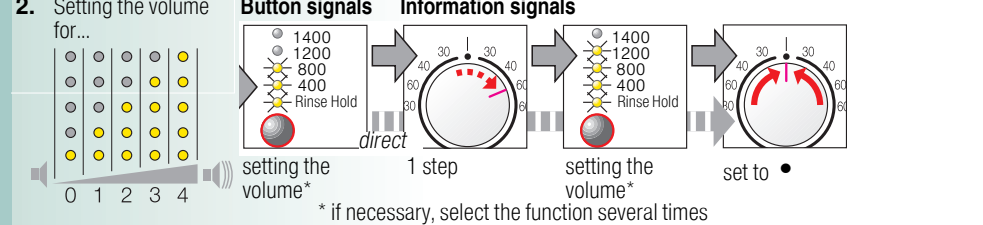
## ▶ Start/Reload

To start the programme or to subsequently load additional laundry, and to activate/deactivate the childproof lock.

# Individual settings

## Signal

- Activating the mode for setting the signal volume
 

Set to • 1 step, the display panel lights up press and hold + 1 step, release
- Setting the volume for...
 

Button signals Information signals  
 1400 1200 800 400 Rinse Hold  
 setting the volume\* 1 step setting the volume\* set to •

\* if necessary, select the function several times

# Important information

## Protecting the laundry and the machine

- When determining the dosage of all washing powders, additives and cleaning agents, you must follow the manufacturer's instructions..
- Empty all pockets
- Check for metal items (paper-clips, etc.).
- Wash delicates in a laundry bag (tights, curtains, underwired bras).
- Fasten zips, do up any buttons.
- Brush sand out of pockets and collars.
- Remove curtain fittings or place in the laundry bag.

## Laundry with varying degrees of soiling

- light Wash new items of clothing separately.
- Do not prewash. If required, choose the additional function **SpeedPerfect** ⚡
- Pre-treat any stains as necessary.
- intense wash Load less laundry. Choose a programme with a prewash.

## Soaking Load laundry of the same colour.

Pour soaking agent/detergent into compartment II in accordance with the manufacturer's instructions. Turn the programme selector to **Cottons 30 °C** and press ▶ Start/Reload. After approx. 10 minutes, press ▶ Start/Reload to pause the programme. Once the required soaking time has elapsed, press ▶ Start/Reload again to continue the programme, or select a different programme.

## Starch Laundry should not be treated with fabric softener.

Starching is possible in all wash programmes if liquid starch is used. Pour the starch in accordance with the manufacturer's instructions into fabric softener compartment ⌘ (rinse first if necessary).

## Dyeing / Bleaching

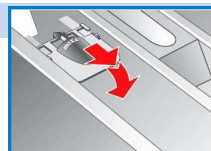
Dye should only be used in normal household quantities. Salt may damage stainless steel. Always follow the dye manufacturer's instructions. Do **not** use the washing machine for bleaching clothes.

## Insert for liquid detergent depending on model

Position the insert for dispensing liquid detergent:

- Remove the detergent drawer completely → page 9
- Slide the insert forwards and click into place.

Do not use the insert (slide upwards): for gel detergents and washing powder, for programmes with **Prewash** ⌵ and end time option.



# Overview of programmes

→ Refer to the table of consumption values on page 8, and advice and warnings on page 6.

| Programmes                   | °C                    | max.       | Type of laundry  | Additional functions; Information  |
|------------------------------|-----------------------|------------|--|--|
| <b>Cottons</b>               | 20, 30, 40, 60, 90 °C | 8 kg/4 kg* | hard-wearing fabrics, cottons or linen that can be washed at 90 °C                           | SpeedPerfect *, EcoPerfect , Reduced Ironing , Aqua Plus   |
| <b>Prewash</b>               | 40 °C                 |            |  |  |
| <b>Easy-Care</b>             | 30, 40 °C             |            | easy-care cotton, linen, synthetic or blended fabrics  | SpeedPerfect , EcoPerfect , Reduced Ironing , Aqua Plus  |
| <b>Mixed Load</b>            | 40 °C                 | 3.5 kg     | cotton or synthetic fabrics  | SpeedPerfect , EcoPerfect , Reduced Ironing , Aqua Plus , different types of laundry can be washed together                          |
| <b>Delicate/Silk</b>         | 30 °C                 |            | for delicate fabrics, e.g., silk, satin, synthetic fibres or blended fabrics (e.g. curtains) | SpeedPerfect , EcoPerfect , Reduced Ironing , Aqua Plus , no spin between rinse cycles   |
| <b>Wool</b>                  | cold, 30 °C           | 2 kg       | hand/machine washable wool   | particularly delicate wash programme to avoid shrinkage of laundry, longer programme breaks (fabrics rest in the detergent solution) |
| <b>Super Quick 15'</b>       | 30 °C                 |            | synthetic cotton, linen, synthetic fibres or blended fabrics                                 | short programme of approx. 15 minutes, suitable for lightly soiled laundry   |
| <b>Additional programmes</b> |                       |            |  | <b>Rinse/Spin</b> , <b>Drain</b>   |

\* reduced load with additional function **SpeedPerfect**

For programmes without prewash, add detergent to compartment **II**. For prewash programmes, distribute the detergent between compartments **I** and **II**.



Robert Bosch Hausgeräte GmbH  
Carl-Wery Str. 34  
81739 Munich / Germany

WAQ2436SGB / ...

## Safety instructions

- Carefully read the instruction manual and the information enclosed, and act accordingly.
- Keep the machine's documentation for future reference.

### Risk of electric shock!

- Never pull the cable to disconnect the mains plug!
- Never insert/disconnect the mains plug with damp hands.

### Danger to life!

For worn-out appliances:

- Disconnect the mains plug.
- Sever the mains cable and discard along with the plug.
- Destroy the lock on the washing machine door. This will prevent children from locking themselves in and risking their lives.

### Danger of suffocation!

- Keep packaging, film and packaging parts out of the reach of children.

### Risk of poisoning!

- Keep detergents and care products out of the reach of children.

### Risk of explosion!

- Items of laundry pretreated with cleaning agents containing solvents, e.g. stain remover/cleaning solvent may lead to an explosion after being loaded into the washing machine. Rinse items of laundry thoroughly by hand beforehand.

### Risk of injury!

- The washing machine door may become very hot.
- Be careful when draining hot detergent solution.
- Do not climb onto the washing machine.
- Do not lean on the open washing machine door.
- Do not reach into the drum if it is still rotating.
- Be careful when opening the detergent drawer while the machine is in operation.

## Consumption values depending on model

| Programme           | Load   | Electricity*** | Water*** | Programme duration*** |
|---------------------|--------|----------------|----------|-----------------------|
| Cottons 20 °C       | 8 kg   | 0.37 kWh       | 68 l     | 2 ½ h                 |
| Cottons 40 °C*      | 8 kg   | 1.05 kWh       | 68 l     | 2 ¾ h                 |
| Cottons 60 °C       | 8 kg   | 1.15 kWh       | 68 l     | 2 ¾ h                 |
| Cottons 90 °C       | 8 kg   | 2.30 kWh       | 80 l     | 2 ¾ h                 |
| Easy-Care 40 °C*    | 3.5 kg | 0.64 kWh       | 55 l     | 1 ¾ h                 |
| Mixed Load 40 °C    | 3.5 kg | 0.54 kWh       | 47 l     | 1 h                   |
| Delicate/Silk 30 °C | 2 kg   | 0.19 kWh       | 34 l     | ¾ h                   |
| Wool 30 °C          | 2 kg   | 0.17 kWh       | 39 l     | ¾ h                   |

\* Programme setting for testing in accordance with valid standard EN60456.

Note on comparative tests: For testing the test programmes, wash the specified load using the maximum spin speed.

| Programme        | Additional function | Load   | Annual energy consumption | Annual water consumption |
|------------------|---------------------|--------|---------------------------|--------------------------|
| Cottons 40/60 °C | EcoPerfect          | 8/4 kg | 179 kWh                   | 8700 l                   |

\*\* Programme setting for testing and energy labelling in accordance with EU directive 2010/30/EU with cold water (15 °C).

\*\*\* The values deviate from the indicated values depending on water pressure, hardness, and inlet temperature, ambient temperature, type, amount and soiling of the laundry, detergent used, fluctuations in the power supply and selected additional functions.

# Care and cleaning



- Risk of electric shock! Disconnect the mains plug.
- Risk of explosion! Do not use solvents.

## Before the first wash

Do not put laundry in the machine! Turn on the tap. Put into compartment II:  
 - approx. 2 litres of water  
 - detergent (measure according to the manufacturer's instructions for lightly soiled laundry and water hardness)  
 Turn the programme selector to **Cottons** 60 °C, additional function **SpeedPerfect** and press **Start/Reload**.  
 At the end of the programme, turn the programme selector to **Off**.

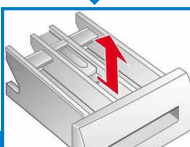
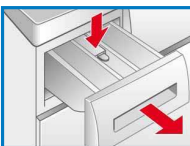
## Machine housing, control panel

- Remove detergent and cleaning agent residue.
- Wipe with a soft, damp cloth.
- Do not wash the machine with a jet of water!

## Cleaning the detergent drawer ...

... if it contains detergent or fabric softener residues.

1. Pull out, press insert down and remove drawer completely.
2. To remove the insert: press upwards from below with your finger.
3. For models with insert for liquid detergent: Slide the insert upwards and remove it from the back.
4. Clean the detergent dispenser tray and inserts with water and a brush and dry them.
5. Attach the insert and engage (connect the cylinder to the guide pin).
6. Push in the detergent drawer.



Leave the detergent drawer open so that any residual water can evaporate.

## Drum

Leave the washing machine door open so that the drum can dry out.  
 For rust stains, use chlorine-free cleaning agent, not steel wool.

## Descaling *Ensure there is no laundry in the machine!*

This will not be necessary if the correct dosage of detergent is used. If it is, descale the appliance according to the manufacturer's instructions. Descaling products can be acquired on the website or from customer services → *Installation instructions*.

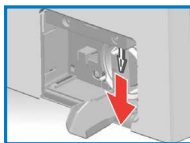
## Emergency release *(e.g. in the event of a power cut)*

The programme continues to run when the power has been restored. However, if the laundry has to be removed, the washing machine door can be opened as follows:

### Risk of scalding!

The detergent solution and laundry may be hot. Let it cool.  
 Do not reach into the drum if it is still rotating.  
 Do not open the washing machine door if water can be seen through the glass.

1. Turn the programme selector to **Off** and disconnect the mains plug.
2. Drain the detergent solution → page 10.
3. Pull the emergency release downwards with a tool and release.  
 The washing machine door can then be opened.



## Information on the display panel *depending on model*

|                 |  |
|-----------------|--|
| E: 15           | Close the washing machine door properly; laundry may be caught.  |
| E: 17,<br>E: 29 | Turn on the (cold water) tap fully, supply hose kinked or trapped;<br>Clean the filter → page 10, water pressure too low.  |
| E: 18           | - Detergent solution pump blocked; Clean the detergent solution pump → page 10.<br>- Drainage hose / waste pipe blocked; Clean the drainage hose at the siphon → page 10.<br>- Heavy foam build-up → page 11, status indicator <b>Wash</b> flashes.        |
| E: 23           | Water in the base tub, appliance leaking. Call customer services!  |
| R: 10           | - Open the (hot water) tap fully.<br>- Inlet hose kinked/trapped.<br>- Water pressure too low. Clean the filter → page 10.<br>- Hot water hose not connected; appliance will operate using cold water only. Ignore information, only for first wash cycle. |
| CL              | Childproof lock activated: to deactivate → page 5.   |

# Maintenance

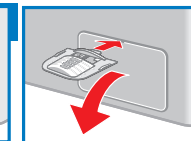
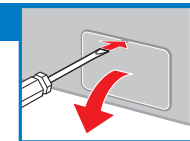


- Risk of burning!  
Allow the detergent solution to cool.
- Turn off the tap.

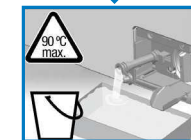
## Detergent solution pump

Turn the programme selector to **Off** and disconnect the mains plug.

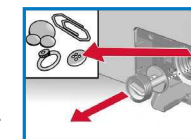
1. Using a screwdriver or the insert for liquid detergent (depending on model), open and remove the service flap.
2. Remove the folding gutter and place a large enough container underneath.
3. **For models with a drainage hose:** Remove the drainage hose from the retainer and pull it from the housing.  
 Remove the sealing cap, allow the detergent solution to flow out into the container. Replace the sealing cap and place the drainage hose in the retainer.



- 3\* **For models without a drainage hose:** Carefully unscrew the pump cover 180° or until the detergent solution begins to flow out on the folding gutter. When the container is full, close the pump cover and empty the container. Repeat the above steps until all the detergent solution has completely drained out.



4. Carefully unscrew the pump cover (there may be residual water).
5. Clean the interior, pump cover thread and pump housing (the impeller in the detergent solution pump must rotate).
6. Replace the pump cover and screw it tightly.
7. Return the drainage hose (depending on model) and the folding gutter to their start position.
8. Place the service flap back on and close.



To prevent unused detergent from flowing straight into the drain during the next wash:  
 Pour 2 litres of water into compartment **II** and then start the **Drain** programme.

## Drainage hose at the siphon

Turn the programme selector to **Off** and disconnect the mains plug.

1. Loosen the hose clamp, carefully remove the drainage hose (residual water).
2. Clean the drainage hose and siphon connecting piece.
3. Reattach the drainage hose and secure the connection with the hose clamp.



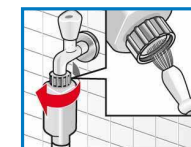
## Filter in the water supply

### Risk of electric shock!

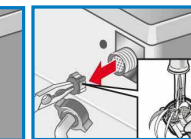
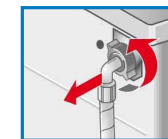
Do not immerse the Aqua-Stop safety device in water (contains an electric valve).

Reduce the water pressure in the supply hose:

1. Turn off the tap.
2. Select any programme (except **Rinse/Spin** // **Drain**).
3. Choose **Start/Reload**. Let the programme run for approximately 40 seconds.
4. Turn the programme selector to **Off**. Disconnect the mains plug.  
 Clean the filter:



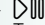
5. Disconnect the hose from the tap.  
 Clean the filter using a small brush.  
**and/or** for Standard and Aqua-Secure models:  
 Remove the hose on the rear of the appliance.  
 Remove the filter with pliers and clean.
6. Connect the hose and check for leaks.





## What to do if...

- Water is leaking out

  - Attach/replace the drainage hose correctly.
  - Tighten the screw connection of the supply hose.
- No water supply.  
Detergent not dispensed.

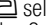
  -  **Start/Reload** not selected?
  - Tap not turned on?
  - Filter blocked? Clean the filter → *page 10*.
  - Supply hose kinked or trapped?
- The appliance door will not open.

  - Safety function active. Programme stopped? → *page 4*.
  - **Rinse Hold** (without final spin) selected? → *page 3, 4*.
  - Can be opened by emergency release only? → *page 9*.
  - Door locked after the washing machine is switched off: Switch on the washing machine and wait for 5 seconds.
- The selected programme does not start.

  -  **Start/Reload** or  (**Ready in**) time selected?
  - Washing machine door closed?
  - Childproof lock active? Deactivate → *page 5*.
- Detergent solution is not drained.

  - **Rinse Hold** (without final spin) selected? → *page 3, 4*.
  - Clean the detergent solution pump → *page 10*.
  - Clean the waste pipe and/or drainage hose.
- No water can be seen in the drum.


  - Not a fault. Water remains inside below the visible area.
- Spin result not satisfactory.  
Laundry wet/too damp.

  - Not a fault. Spin control system has stopped the spin cycle. Uneven distribution of laundry.  
Distribute large and small items of laundry evenly in the drum.
  - **Reduced Ironing**  selected? → *page 5*.
  - Selected speed too low? → *page 5*.
- Programme duration changes suddenly during operation.

  - Not a fault. The program time can vary according to the distribution of laundry, with it therefore being possible for the display panel to show adjustments in the duration.
- Spin cycle performed several times.

  - Not a fault. The balance control system has detected an imbalance and is attempting to redress this by repeating the spin.
- Residual water in the compartment for care products.

  - Not a fault: the action of the care product is not affected.
  - Clean the compartment if necessary → *page 9*.
- Odour formation in the washing machine.


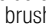
  - Run programme **Cottons**  **90 °C** without laundry. Use standard detergent.
- Status display **Wash** flashing.  
Appliance has detected a detergent overload.

  - Too much detergent used?  
If foam is escaping from the detergent drawer: mix 1 tablespoon of fabric softener with ½ litre of water and pour into compartment **II** (*not with outdoor or down fabrics*).
  - Reduce the detergent dosage for the next wash cycle.
- Intense noise formation, vibrations and "wandering" during the spin cycle.

  - Are the appliance feet fixed?  
Secure the appliance feet → *Installation instructions*.
  - Transportation safety devices removed?  
Remove transportation safety devices → *Installation instructions*.
- Display panel/indicator lamps remain turned off while the machine is working.

  - Energy-saving mode → *page 5*.
  - Power cut?
  - Fuses triggered? Reset/change the fuse.
  - If the fault occurs repeatedly, call customer services.
- Programme sequence longer than usual.

  - Not a fault. Unbalanced load detection system adjusts imbalance by repeatedly distributing the laundry.
  - Not a fault: foam detection system active; adds an additional rinse cycle.
- Detergent residues on the laundry.

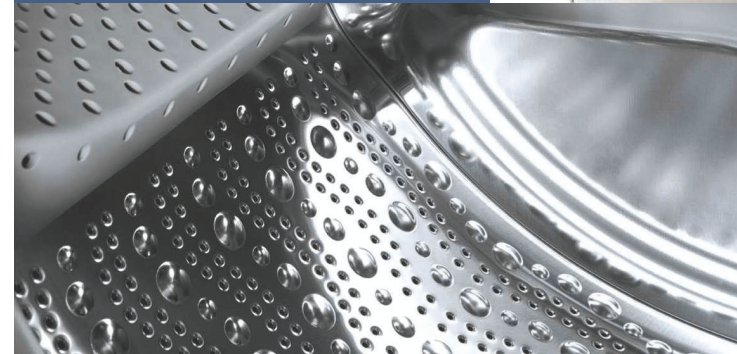
  - Occasionally, phosphate-free detergents contain water-insoluble residues.
  - Select  **Rinse/Spin**  or brush out the laundry after washing.

If you cannot correct a fault yourself or if a repair is necessary:

- Turn the programme selector to **Off** and remove the mains plug from the socket.
- Turn off the water supply and call customer services → *Installation instructions*.



Register your new Bosch now:  
[www.bosch-home.com/welcome](http://www.bosch-home.com/welcome)



**Washing machine  
WAQ2436SGB / ...**



**en** Instruction manual