



# TASSIMO

SUNY



## TAS 32xxUC

en Instruction manual  
fr Mode d'emploi  
es Instrucciones de uso

# 2



**BOSCH**



**en** First time use  
**fr** La première utilisation  
**es** Puesta en servicio



**en** Beverage preparation  
**fr** Préparation de boissons  
**es** Preparación de bebidas



**en** Cleaning  
**fr** Nettoyage  
**es** Limpiar

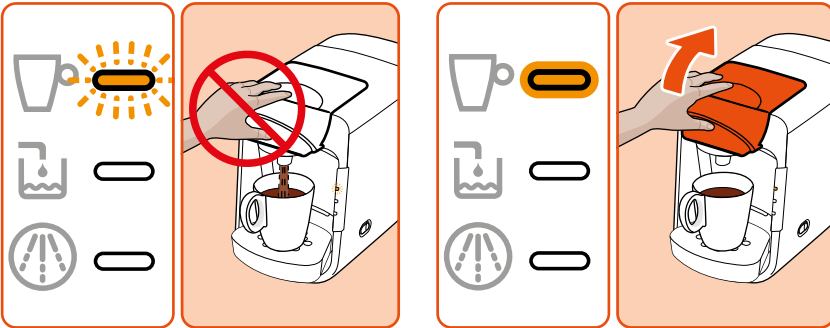


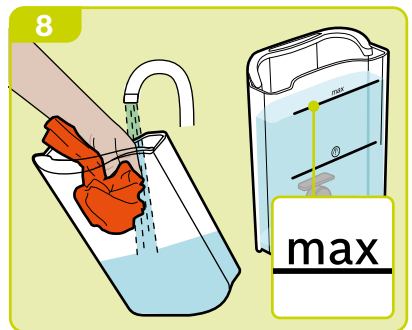
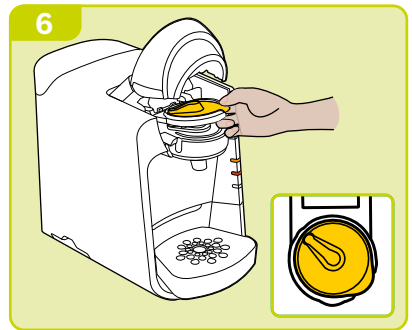
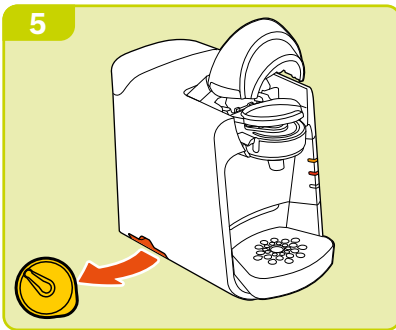
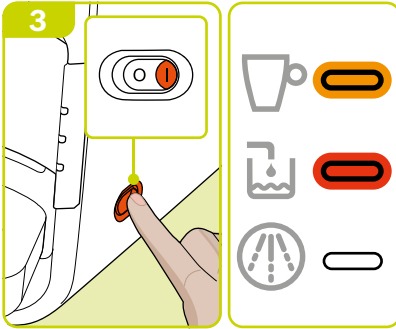
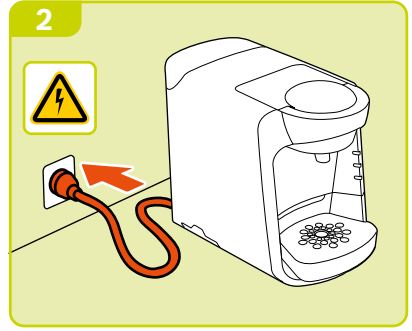
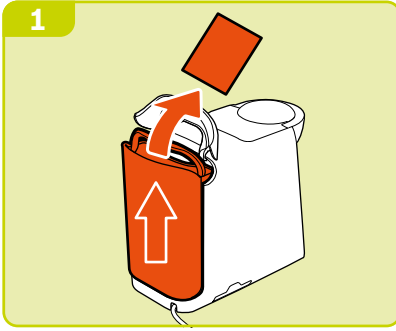
**en** Descaling  
**fr** Détartrage  
**es** Descalcificar

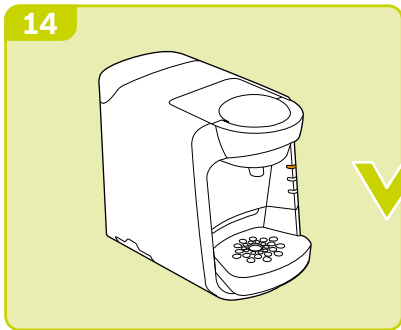
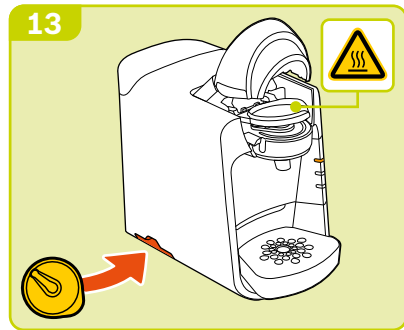
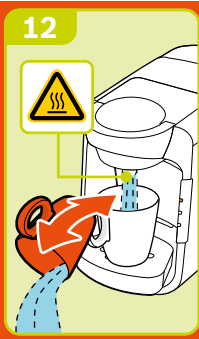
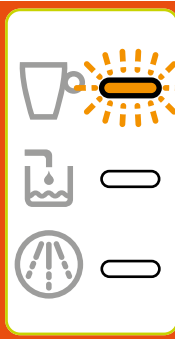
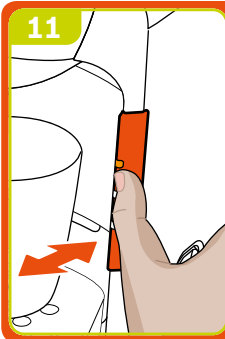
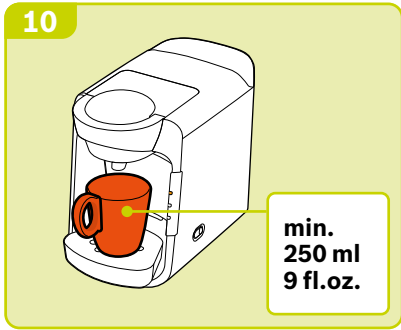
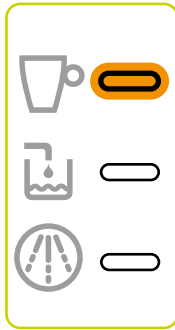
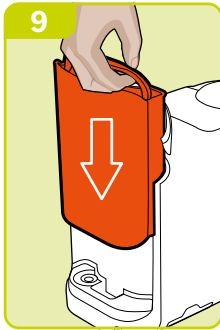
en Risk of electric shock!  
fr Risque de choc électrique!  
es ¡Peligro de electrocución!

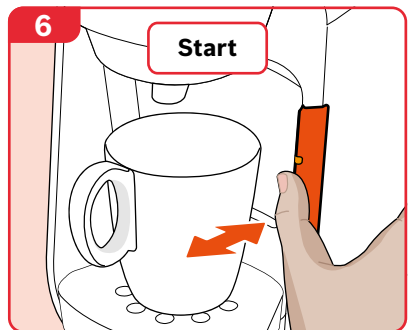
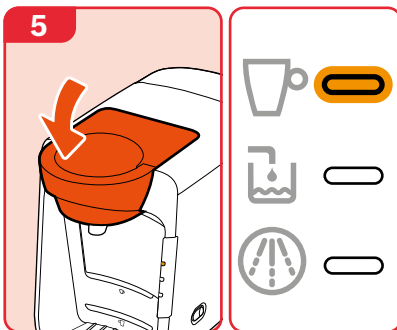
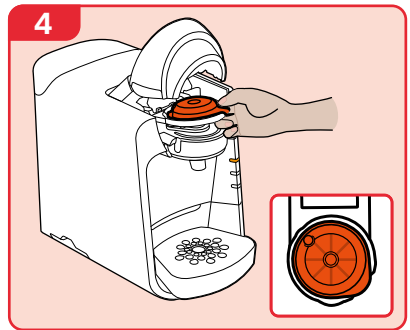
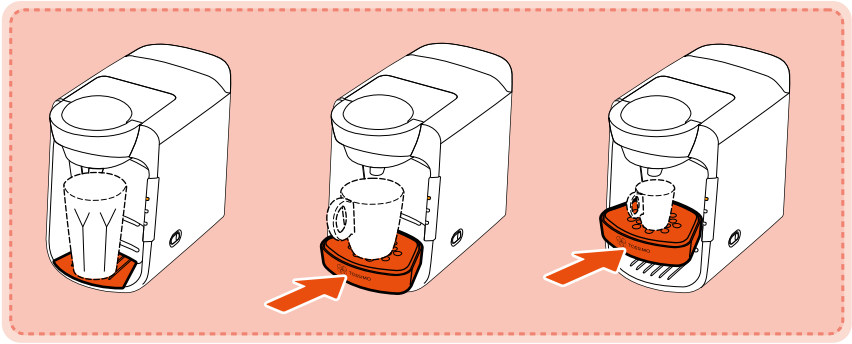
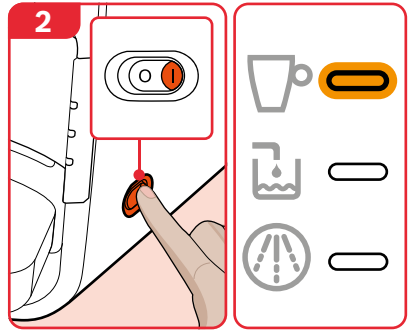
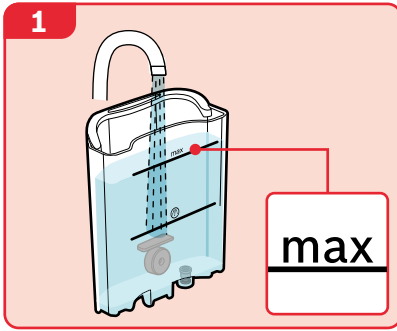


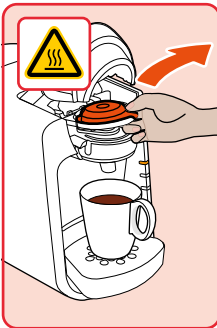
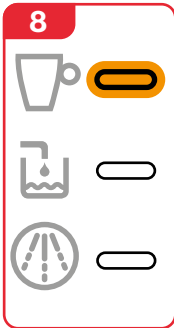
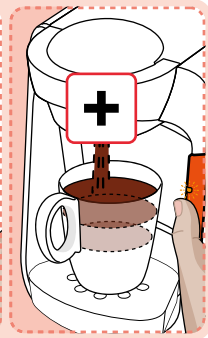
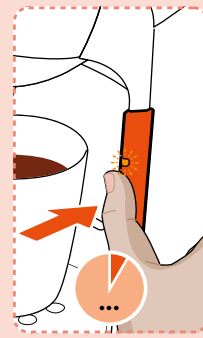
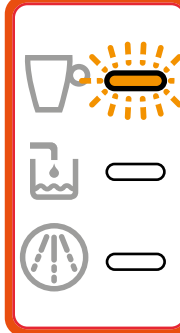
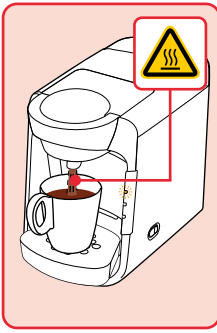
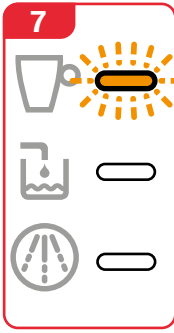
en Risk of burns!  
fr Risque de brûlure!  
es ¡Peligro de quemaduras!

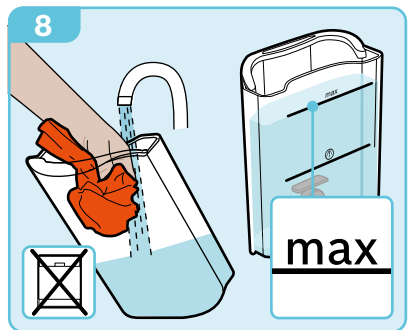
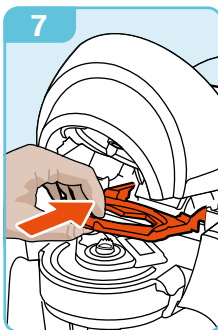
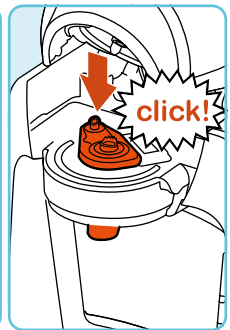
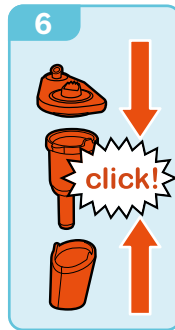
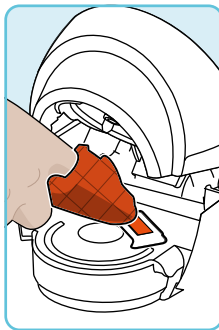
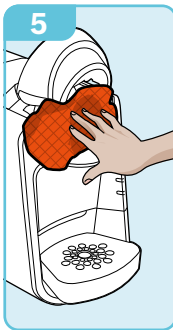
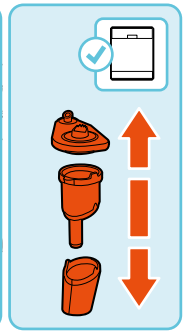
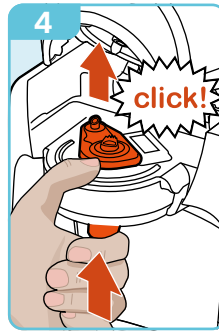
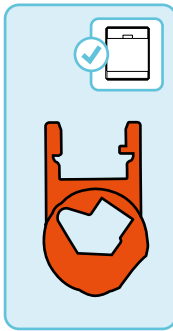
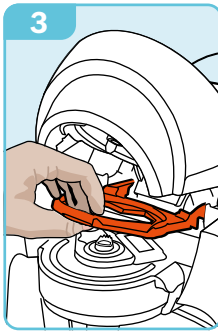
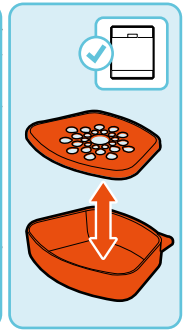
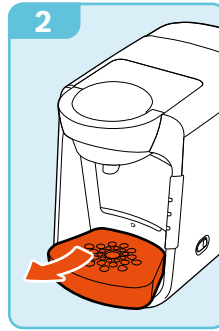
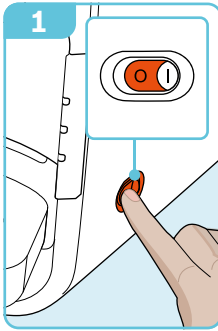




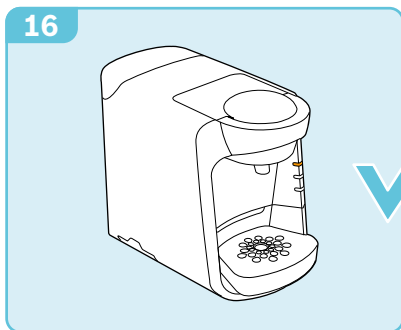
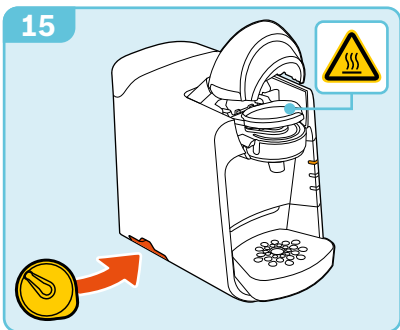
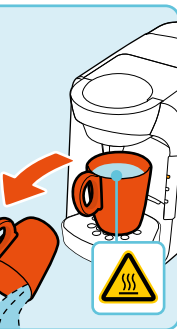
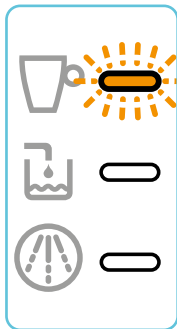
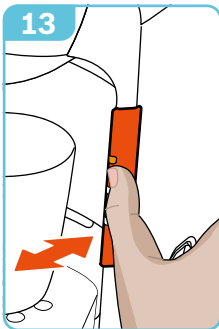
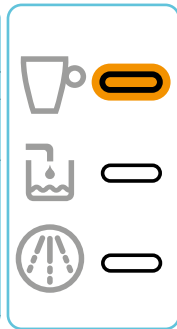
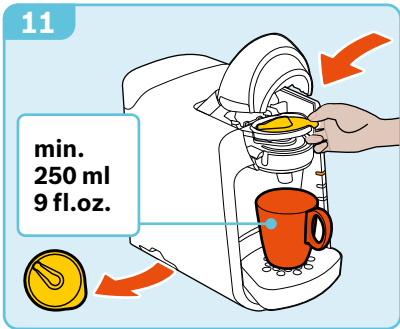
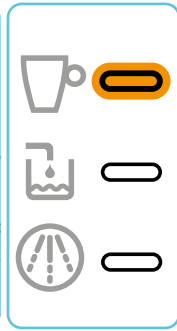
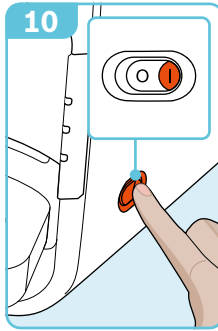


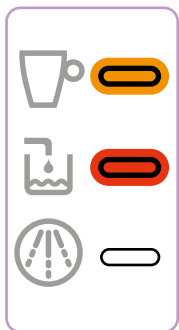
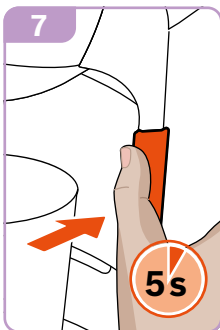
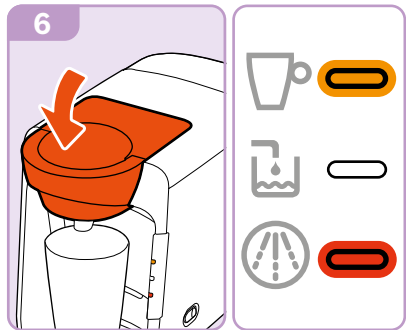
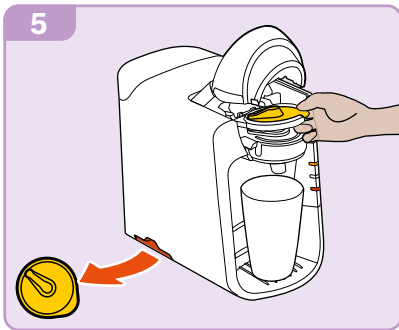
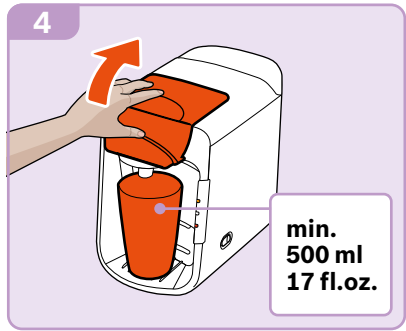
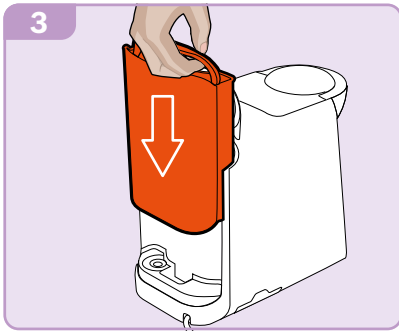
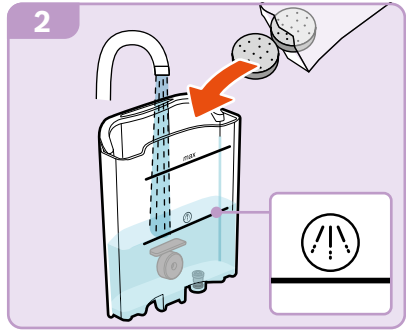
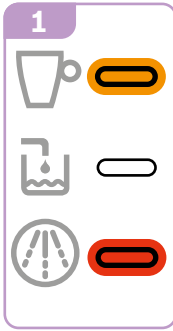


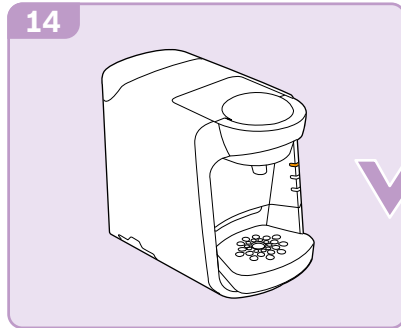
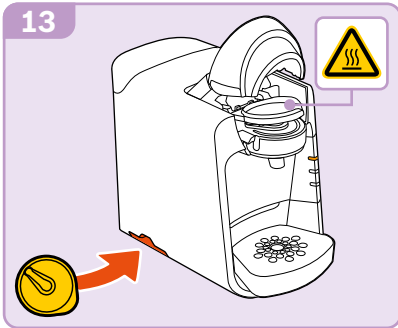
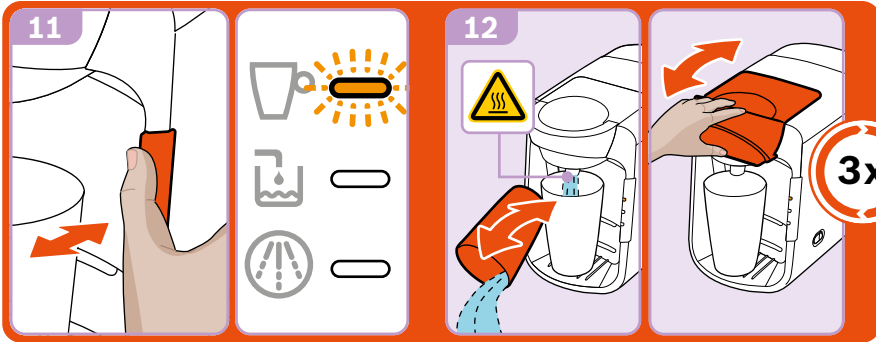
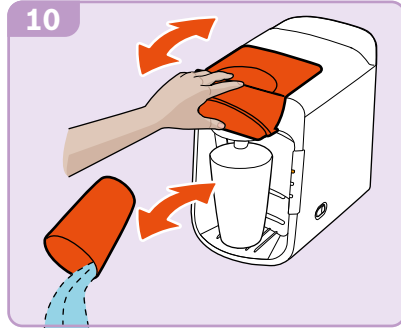
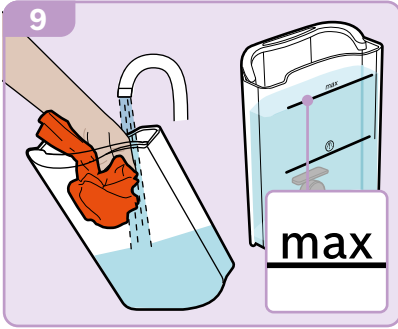














- en** Always follow the safety instructions in the included manual part 1! You will also find detailed information regarding Care and Use, Warranty and Contact information for Customer Service.
- fr** Suivez toujours les consignes de sécurité fournies dans la partie 1 de ce manuel. Vous trouverez également des informations sur l'entretien, l'utilisation, les conditions de garantie et les coordonnées du service client.
- es** Lea atentamente estas instrucciones de uso y la información adjunta antes de utilizar la máquina. También encontrará información detallada referente al uso, garantía y direcciones de contacto.

### **BSH Home Appliances**

**USA** 1901 Main Street  
Irvine, CA 92614  
[www.boschappliances.com](http://www.boschappliances.com)

**CA** 6696 Financial Drive, Unit 3  
Mississauga, ON  
L9T 5V4  
[www.bosch-home.ca](http://www.bosch-home.ca)