

# Your washing machine

**Congratulations** on having opted for a modern, high-quality domestic appliance manufactured by Bosch. This washing machine is distinguished by its economical energy consumption. Each machine that leaves our factory has been inspected thoroughly to ensure that it functions properly and is in perfect condition.

For further information on our products, accessories, spares and services, consult our website [www.bosch-home.com](http://www.bosch-home.com) or contact any of our customer service centres.

You can find the contact details for your nearest after-sales service here or in the after-sales service directory (depending on model).

- **GB** 0844 892 8979 (calls from a BT landline will be charged at up to 3 pence per minute. A call set-up fee of up to 6 pence may apply)
- **IE** 01450 2655 (0.03 € per minute at peak. Off peak 0.0088 € per minute)

## Environmentally friendly waste disposal

All packaging must be disposed of in accordance with environmental guidelines. This appliance is certified in accordance with European Directive 2012/19/EU on the waste electrical and electronic equipment (WEEE). This directive provides the framework for the EU-wide collection and reuse of used appliances.

## Contents

	Page
Intended use	1
Programmes	1
Setting and adjusting the programme	3
Washing	3/4
After washing	4
Individual settings	5/6
Important information	6
Overview of programmes	7
Safety instructions	8
Consumption values	8
Care and cleaning	9
Information on the display panel	9
Maintenance	10
What to do if ...	11

### Protection of the environment/Conservation tips

- Always fill the washing machine with a maximum amount of laundry for the particular programme.
- The selectable temperatures apply to the care labels on the textiles. The temperatures in the machine may deviate from this so that you get the optimum mix of energy-saving and washing results
- Wash normally soiled laundry without a prewash.
- Measure the detergent according to the manufacturer's instructions and water hardness.
- If the laundry is subsequently dried in a tumble drier, select the spin speed according to the tumble drier manufacturer's instructions.

## Intended use

- for domestic use only,
  - for washing machine-washable fabrics and hand-washable wool in detergent solution,
  - to be operated with cold drinking water and commercially available detergents and care products which are suitable for use in washing machines,
  - The washing machine may be operated by children from 8 years of age, by persons who have limited physical, sensory or mental abilities and by persons who have inadequate experience or knowledge, provided they are **super-vised** or **have been instructed** by a responsible person.
- Follow the safety instructions on page 8!
  - Do not leave children unattended near the washing machine.
  - The washing machine is not to be used by children or persons not familiar with the operating instructions.
  - Keep pets away from the washing machine.

Do not switch on the washing machine until you have read these instructions and the separate Installation instructions!

## Preparation

Correct installation according to the separate installation actions.

### Checking the machine

- Never use a damaged machine!
- Contact customer service!

### Connecting the mains plug

Make sure your hands are dry! Handle the plug only!

### Turning on the tap

## Sorting and loading laundry

**Before the first wash,** run a wash cycle with no laundry in the machine → Page 9.

Follow the manufacturer's care information! Sort laundry according to the label's indications. And according to type, colour, soiling and temperature. Do not exceed the maximum load → Page 7.

Observe important information! → Page 6

Wash laundry of different sizes in the same wash programme. Close the door. Take care not to trap items of laundry between the washing machine door and seal.

**Add detergent and care products**

Measure detergent according: amount of laundry, soiling, water hardness (ask your water supply company) and manufacturer's instructions.

For models without insert for liquid detergent: Pour liquid detergent into the appropriate dispenser and place in the drum.

Dilute viscous fabric softener and fabric conditioner with water. This prevents blockages.

Insert for liquid detergent (depending on model) → page 6

**Compartment II:** detergent for the main wash, water softener, bleach, stain remover

**Compartment I:** Detergent for prewash

## Setting\*\* and adjusting programmes

Detailed overview of programmes → page 7. Spin speed can be selected individually, irrespective of the selected programme and programme progress.

	hard-wearing fabrics
	hard-wearing fabrics, prewash
	Different types of laundry
	Short programme
	Laundry washed by hand, <b>Aqua Plus</b> button activated; if only using the spin cycle, deactivate the button
	Drain rinsing water with <b>Rinse Hold</b> (without final spin)
	Hand/machine washable wool
	Delicate washable fabrics
	synthetic fabrics

Spin

1200

1000

800

400

Rinse Hold

Programme Flow

Wash

Rinse

Spin

End

Easy-Care

30°

Off

20°

30°

40°

40°+

60°

90°

40°

Rinse/Spin

Mixed Load

Start

Reload

1 - 24 (Ready in)	End of programme after ...
Status displays	Programme sequence displays: Wash, Rinse, Spin, End
Rinse Hold	Without final spin
	Childproof lock → page 5

\*\*If flashes in the display panel, the childproof lock is active → Deactivate childproof lock, page 5.

Additional functions and option buttons → Individual settings, page 5.

**Press Start/Reload**

All buttons are sensitive and need only to be touched lightly. Press and hold the (Ready in) option button for an automatic run through all setting options.

Programme selector for switching the machine on and off and for selecting the programme. Can be turned in either direction.

## Washing



## Removing the washing

Open the washing machine door and remove the washing. If **Rinse Hold** (without final spin) is active: turn the programme selector to **Drain** or select the spin speed. Choose **Start/Reload**.

– Remove any foreign objects. Risk of rusting.  
– Leave the washing machine door and detergent door open so that any residual water can evaporate.

## Turn the tap off

Not required for Aqua-Stop models → Refer to Installation instructions.

## Switching off

Turn the programme selector to **Off**.

## End of programme when ...

... Start/Reload is off and - - appears on the display panel.  
*Note:* If display panel lighting is switched off, press any button → Energy saving mode, page 5.

## Interrupting the programme

Programmes at high temperatures:  
– Cool washing: Select **Rinse/Spin**.  
– Press **Start/Reload**.

Programmes at lower temperatures:  
– Select **Rinse/Spin** (deactivate **Water Plus** button) or **Drain**.  
– Press **Start/Reload**.

## Changing the programme if ...

... you have selected the wrong programme by mistake:  
– Reselect the programme.  
– Press **Start/Reload**. The new programme starts from the beginning.

## Reloading laundry if ... → page 5

... Press **Start/Reload**: **YES** is displayed on the display panel. If **NO** is lit, the washing machine door cannot be opened. Press **Start/Reload**.

## Individual settings

**Option button (Ready in)**

When a programme is selected, its duration is displayed. You can delay the end of the programme before it begins. The ready-in-time can be set in increments of one hour up to a maximum of 24 hours. Press the (Ready in) button until the required number of hours is displayed (h = hour). Choose **Start/Reload**. Once the programme has begun, no further adjustment is possible.

**Spin (spin speed in rpm/ Rinse Hold (without final spin))**

You can change the displayed spin speed or choose Rinse Hold (without final spin, laundry soaks in the last rinsing water, display panel ---). The maximum selectable spin speed depends on the model and which programme is currently selected.

**Additional functions** → Overview of programmes, page 7

SpeedPerfect	For washing in a shorter time with a washing outcome comparable to that of the standard programme. Maximum load → Overview of programmes, page 7.
EcoPerfect	For saving energy with a washing performance comparable to that of the standard programme.
Reduced Ironing	Special spin sequence with subsequent fluffing. Gentle final spin: residual moisture in the laundry slightly increased.
Water Plus	Increased water level and additional rinse cycle, extended washing time. For areas with very soft water or for further enhancing the spin result.

**Childproof lock**

in the display panel

You can lock the washing machine to prevent the functions you have set from being changed inadvertently.

**To activate:** press and hold the **Start/Reload** button for approx. 5 seconds after the programme has started. appears in the display panel for approx. 5 seconds, then the Finish-in time is shown again.

**To deactivate:** press and hold the **Start/Reload** button for approx. 5 seconds.

*Note:* If a button is pressed when the childproof lock is active, lights up for approx. 5 seconds, then the Finish-in time is displayed again.

lights up continuously if the programme selector is adjusted when the Childlock is active.

**Reloading**

in the display panel

Press **Start/Reload** if you want to add additional items of laundry after the programme has started. The machine checks whether reloading is possible.

**YES** lits: reloading is possible.

**NO** flashes: wait until **YES** lights.

*Note:* do not open the door until **YES** is lit.

**NO**: it is not possible to reload.

*Note:* for safety reasons, the washing machine door remains locked when the water level and/or temperature is high, or during spinning. To continue the programme, press the **Start/Reload** button.

**Energy saving mode**

The display panel lighting goes out after a few minutes, **Start/Reload** flashes. Press any button to switch on the lighting.

**Start/Reload**

To start the programme or to subsequently load additional laundry, and to activate/deactivate the childproof lock.

## Individual settings

**Signal**

- Activating the mode for setting the signal volume
- Setting the volume for ...

0 1 2 3 4

1200 1000 800 400 Rinse Hold

1200 1000 800 400 Rinse Hold

1200 1000 800 400 Rinse Hold

**Button signals** **Information signals**

setting the volume\* 1 step setting the volume\* set to

\* if necessary, select the function several times

**Important information**

**Protecting the laundry and the machine**

- When determining the dosage of all washing powders, additives and cleaning agents, you must follow the manufacturer's instructions.
- Empty all pockets
- Check for metal items (paper-clips, etc.).
- Wash delicates in a laundry bag (tights, curtains, underwired bras).
- Fasten zips, do up any buttons.
- Brush sand out of pockets and collars.
- Remove curtain fittings or place in the laundry bag.

**Laundry with varying degrees of soiling**

light	Wash new items of clothing separately. Do not prewash. If required, choose the additional function <b>SpeedPerfect</b> .
intense wash	Pre-treat any stains as necessary. Load less laundry. Choose a programme with a prewash.

**Soaking** **Load laundry of the same colour.**

Pour soaking agent/detergent into compartment II in accordance with the manufacturer's instructions. Turn the programme selector to **Cottons 30 °C** and press **Start/Reload**. After approx. 10 minutes, press **Start/Reload** to pause the programme. Once the required soaking time has elapsed, press **Start/Reload** again to continue the programme, or select a different programme.

**Starch** **Laundry should not be treated with fabric softener.**

Starching is possible in all wash programmes if liquid starch is used. Pour the starch in accordance with the manufacturer's instructions into fabric softener compartment (rinse first if necessary).

**Dyeing / Decolouring**

Dye should only be used in normal household quantities. Salt may damage stainless steel. Always follow the dye manufacturer's instructions. Do **not** use the washing machine for decolouring clothes.

**Insert for liquid detergent** depending on model

Position the insert for dispensing liquid detergent:

- Remove the detergent drawer completely → page 9
- Slide the insert forwards and click into place.

Do not use the insert (slide upwards): for gel detergents and washing powder, for programmes with **+ Prewash** and end time option.



Programmes	°C	max.	Type of laundry	Additional functions: Information	
				SpeedPerfect	Water Plus
<b>Cottons</b>	20, 30, 40, 60, 90 °C	8 kg/4 kg*	hard-wearing fabrics, cottons or linen that can be washed at 90 °C	EcoPerfect	Reduced Ironing
<b>+ Prewash</b>	40 °C	4 kg	easy-care cotton, linen, synthetic or blended fabrics	EcoPerfect	Reduced Ironing
<b>Easy-Care</b>	30, 40 °C	3.5 kg	cotton or synthetic fabrics	EcoPerfect	Reduced Ironing
<b>Mixed Load</b>	40 °C			EcoPerfect	Reduced Ironing
<b>Delicate</b>	30 °C		for delicate fabrics, e.g., silk, satin, synthetic fibres or blended fabrics (e.g. curtains)	EcoPerfect	Reduced Ironing
<b>Wool</b>	cold, 30 °C	2 kg	hand/machine washable wool		
<b>SuperQuick 15'</b>	30 °C		synthetic cotton, linen, synthetic fibres or blended fabrics		
<b>Additional programmes</b>				Rinse/Spin	Drain
* reduced load with additional function  SpeedPerfect					
For programmes without prewash, add detergent to compartment <b>II</b> . For prewash programmes, distribute the detergent between compartments <b>I</b> and <b>II</b> .					

Robert Bosch Hausgeräte GmbH  
Carl-Wery Str. 34  
81739 Munich / Germany

WAQ243D0GB

9310 / 9000939273

## Safety instructions

- Carefully read the instruction manual and the information enclosed, and act accordingly.
- Keep the machine's documentation for future reference.

**Risk of electric shock!**

- Never pull the cable to disconnect the mains plug!
- Never insert/disconnect the mains plug with damp hands.

**Danger to life!**

For worn-out appliances:

- Disconnect the mains plug.
- Sever the mains cable and discard along with the plug.
- Destroy the lock on the washing machine door. This will prevent children from locking themselves in and risking their lives.

**Danger of suffocation!**

**Risk of poisoning!**

**Risk of explosion!**

- Keep packaging, film and packaging parts out of the reach of children.
- Items of laundry pretreated with cleaning agents containing solvents, e.g. stain remover/cleaning solvent may lead to an explosion after being loaded into the washing machine. Rinse items of laundry thoroughly by hand beforehand.

**Risk of injury!**

- The washing machine door may become very hot.
- Be careful when draining hot detergent solution.
- Do not climb onto the washing machine.
- Do not lean on the open washing machine door.
- Do not reach into the drum if it is still rotating.
- Be careful when opening the detergent drawer while the machine is in operation.

Consumption values				
Programme	Load	Electricity***	Water***	Programme duration***
Cottons 20 °C	8 kg	0.29 kWh	73 l	2 1/2 h
Cottons 30 °C	8 kg	0.40 kWh	73 l	2 1/2 h
Cottons 40 °C*	8 kg	1.10 kWh	73 l	2 3/4h
Cottons 60 °C	8 kg	1.20 kWh	73 l	2 3/4h
Cottons 90 °C	8 kg	2.20 kWh	85 l	2 1/2 h
Easy-Care 40 °C*	4 kg	0.79 kWh	56 l	2 h
Mixed Load 40 °C	3.5 kg	0.59 kWh	48 l	1h
Delicate 30 °C	2 kg	0.21 kWh	35 l	3/4 h
Wool 30 °C	2 kg	0.19 kWh	40 l	3/4 h
* Programme setting for testing in accordance with valid standard EN60456. Note on comparative tests: For testing the test programmes, wash the specified load using the maximum spin speed.				
Programme	Additional function	Load	Annual energy consumption	Annual water consumption
Cottons 40°C/60 °C	EcoPerfect	8/4 kg	177 kWh	8200 l
** Programme setting for testing and energy labelling in accordance with EU directive 2010/30/EU with cold water (15 °C). *** The values deviate from the indicated values depending on water pressure, hardness, and inlet temperature, ambient temperature, type, amount and soiling of the laundry, detergent used, fluctuations in the power supply and selected additional functions.				

## Care and cleaning

**Risk of electric shock!** Disconnect the mains plug. **Risk of explosion!** Do not use solvents.

**Before the first wash**

Do not put laundry in the machine! Turn on the tap. Put into compartment II:

- approx. 1 litres of water
- detergent (measure according to the manufacturer's instructions for lightly soiled laundry and water hardness)

Turn the programme selector to **Cottons 60 °C** and press **Start/Reload** . At the end of the programme, turn the programme selector to **Off**.

**Machine housing, control panel**

- Remove detergent and cleaning agent residue.
- Wipe with a soft, damp cloth.
- Do not wash the machine with a jet of water!

**Cleaning the detergent drawer ...**

... if it contains detergent or fabric softener residues.

- Pull out, press insert down and remove drawer completely.
- To remove the insert: press upwards from below with your finger.
- For models with insert for liquid detergent: Slide the insert upwards and remove it from the back.
- Clean the detergent dispenser tray and inserts with water and a brush and dry them.
- Attach the insert and engage (connect the cylinder to the guide pin).
- Push in the detergent drawer.

Leave the detergent drawer open so that any residual water can evaporate.

**Drum**

Leave the washing machine door open so that the drum can dry out. For rust stains, use chlorine-free cleaning agent, not steel wool.

**Descaling** *Ensure there is no laundry in the machine!*

This will not be necessary if the correct dosage of detergent is used. If it is, descale the appliance according to the manufacturer's instructions. Descaling products can be acquired on the website or from customer services → *Installation instructions*.

**Emergency release** *(e.g. in the event of a power cut)*

The programme continues to run when the power has been restored. However, if the laundry has to be removed, the washing machine door can be opened as follows:

**Risk of scalding!**  
The detergent solution and laundry may be hot. Let it cool. Do not reach into the drum if it is still rotating. Do not open the washing machine door if water can be seen through the glass.

- Turn the programme selector to **Off** and disconnect the mains plug.
- Drain the detergent solution → *page 10*.
- Pull the emergency release downwards with a tool and release. The washing machine door can then be opened.

## Information on the display panel

*depending on model*

<b>E: 15</b>	Close the washing machine door properly; laundry may be caught.
<b>E: 17</b>	Turn on the (cold water) tap fully, supply hose kinked or trapped; Clean the filter → <i>page 10</i> , water pressure too low.
<b>E: 29</b>	<ul style="list-style-type: none"> <li>Detergent solution pump blocked; Clean the detergent solution pump → <i>page 10</i>.</li> <li>Drainage hose / waste pipe blocked; Clean the drainage hose at the siphon → <i>page 10</i>.</li> <li>Heavy foam build-up → <i>page 10</i>, status indicator <b>Wash</b> flashes.</li> </ul>
<b>E: 18</b>	Water in the base tub, appliance leaking. Call customer services!
<b>E: 23</b>	Water in the base tub, appliance leaking. Call customer services!
<b>R: 10</b>	<ul style="list-style-type: none"> <li>Open the (hot water) tap fully.</li> <li>Inlet hose kinked/trapped.</li> <li>Water pressure too low. Clean the filter → <i>page 10</i>.</li> <li>Hot water hose not connected; appliance will operate using cold water only. Ignore information, only for first wash cycle.</li> </ul>
<b>CL</b>	Childproof lock activated: to deactivate → <i>page 5</i> .

## Maintenance

**Risk of burning!** Allow the detergent solution to cool. **Risk of explosion!** Turn off the tap.

**Drain pump blocked**

Set programme selector to **Off**, pull out the mains plug.

- Open service flap.
- Take the drainage hose out of the holder.
- Remove sealing cap, allow detergent solution to flow out. Have a suitable container ready. Push up the closing cap and place the drain hose back in its holder.
- Carefully unscrew the pump cover (Caution! residual water). Clean the interior, pump cover thread and pump housing (fan impeller in the detergent-solution pump must rotate).
- Reinsert and screw on pump cover. Handle should be vertical.
- Close the service flap.

To prevent unused detergent from flowing into the outlet during the next wash: Pour 1 litre of water into dispenser **II** and start the **Drain** programme.

**Drainage hose on the siphon blocked**

Set programme selector to **Off**, pull out the mains plug.

- Loosen hose clip, carefully remove drainage hose. (Caution! Residual water.)
- Clean drainage hose and siphon spigot.
- Re-attach drainage hose and secure connection point with hose clip.

**Filter blocked in water inlet hose**

**Risk of electric shock!**  
Do not immerse Aqua-Stop safety device in water (contains electric valve).

Release water pressure in the supply hose:

- Turn off the tap!
- Select any programme (except Rinse/Spin Drain Drain).
- Press **Start/Reload** button. Leave programme for approx. 40 seconds.
- Set programme selector to **Off**. Pull out the mains plug. Clean the filter:
- Disconnect the hose from the water tap. Clean filter with small brush.
- and/or for standard and Aqua-Secure models: remove hose from the rear of the appliance. Take out filter with pliers and clean.
- Connect the hose and check for leaks.

## What to do if...

	Water is leaking out	<ul style="list-style-type: none"> <li>Attach/replace the drainage hose correctly.</li> <li>Tighten the screw connection of the supply hose.</li> </ul>
	No water supply. Detergent not dispensed.	<ul style="list-style-type: none"> <li><b>Start/Reload</b>  not selected?</li> <li>Tap not turned on?</li> <li>Filter blocked? Clean the filter → <i>page 10</i>.</li> <li>Supply hose kinked or trapped?</li> </ul>
	The appliance door will not open.	<ul style="list-style-type: none"> <li>Safety function active. Programme stopped? → <i>page 4</i>.</li> <li><b>Rinse Hold</b> (without final spin) selected? → <i>page 3, 4</i>.</li> <li>Can be opened by emergency release only? → <i>page 9</i>.</li> <li>Door locked after the washing machine is switched off: Switch on the washing machine and wait for 5 seconds.</li> </ul>
	The selected programme does not start.	<ul style="list-style-type: none"> <li><b>Start/Reload</b>  or  (Ready in) time selected?</li> <li>Washing machine door closed?</li> <li>Childproof lock active? Deactivate → <i>page 5</i>.</li> </ul>
	Detergent solution is not drained.	<ul style="list-style-type: none"> <li><b>Rinse Hold</b> (without final spin) selected? → <i>page 3, 4</i>.</li> <li>Clean the detergent solution pump → <i>page 10</i>.</li> <li>Clean the waste pipe and/or drainage hose.</li> </ul>
	No water can be seen in the drum.	<ul style="list-style-type: none"> <li>Not a fault. Water remains inside below the visible area.</li> </ul>
	Spin result not satisfactory. Laundry wet/too damp.	<ul style="list-style-type: none"> <li>Not a fault. Spin control system has stopped the spin cycle. Uneven distribution of laundry. Distribute large and small items of laundry evenly in the drum.</li> <li><b>Reduced Ironing</b>  selected? → <i>page 5</i>.</li> <li>Selected speed too low? → <i>page 5</i>.</li> </ul>
	Programme duration changes suddenly during operation.	<ul style="list-style-type: none"> <li>Not a fault. The program time can vary according to the distribution of laundry, with it therefore being possible for the display panel to show adjustments in the duration.</li> </ul>
	Spin cycle performed several times.	<ul style="list-style-type: none"> <li>Not a fault. The balance control system has detected an imbalance and is attempting to redress this by repeating the spin.</li> </ul>
	Residual water in the compartment for care products.	<ul style="list-style-type: none"> <li>Not a fault: the action of the care product is not affected.</li> <li>Clean the compartment if necessary → <i>page 9</i>.</li> </ul>
	Odour formation in the washing machine.	<ul style="list-style-type: none"> <li>Run programme  <b>Cottons 90 °C</b> without laundry. Use standard detergent.</li> </ul>
	Status display <b>wash</b> flashing. Appliance has detected a detergent overload.	<ul style="list-style-type: none"> <li>Too much detergent used? If foam is escaping from the detergent drawer: mix a small quantity (ca. 15 ml) of fabric softener with ½ litre of water and pour into compartment <b>II</b> (not with outdoor or down fabrics).</li> <li>Reduce the detergent dosage for the next wash cycle.</li> </ul>
	Intense noise formation, vibrations and "wandering" during the spin cycle.	<ul style="list-style-type: none"> <li>Are the appliance feet fixed? Secure the appliance feet → <i>Installation instructions</i>.</li> <li>Transportation safety devices removed? Remove transportation safety devices → <i>Installation instructions</i>.</li> </ul>
	Display panel/indicator lamps remain turned off while the machine is working.	<ul style="list-style-type: none"> <li>Energy-saving mode → <i>page 5</i>.</li> <li>Power cut?</li> <li>Fuses triggered? Reset/change the fuse.</li> <li>If the fault occurs repeatedly, call customer services.</li> </ul>
	Programme sequence longer than usual.	<ul style="list-style-type: none"> <li>Not a fault. Unbalanced load detection system adjusts imbalance by repeatedly distributing the laundry.</li> <li>Not a fault: foam detection system active; adds an additional rinse cycle.</li> </ul>
	Detergent residues on the laundry.	<ul style="list-style-type: none"> <li>Occasionally, phosphate-free detergents contain water-insoluble residues.</li> <li>Select  <b>Rinse/Spin</b>  or brush out the laundry after washing.</li> </ul>

If you cannot correct a fault yourself or if a repair is necessary:

- Turn the programme selector to **Off** and remove the mains plug from the socket.
- Turn off the water supply and call customer services → *Installation instructions*.

Register your new Bosch now:  
[www.bosch-home.com/welcome](http://www.bosch-home.com/welcome)

Washing machine  
WAQ243D0GB



en operating instructions



# Your washing machine

**Congratulations** on having opted for a modern, high-quality domestic appliance manufactured by Bosch. This washing machine is distinguished by its economical energy consumption. Each machine that leaves our factory has been inspected thoroughly to ensure that it functions properly and is in perfect condition.

For further information on our products, accessories, spares and services, consult our website [www.bosch-home.com](http://www.bosch-home.com) or contact any of our customer service centres.

You can find the contact details for your nearest after-sales service here or in the after-sales service directory (depending on model).

- **GB** 0844 892 8979 (calls from a BT landline will be charged at up to 3 pence per minute. A call set-up fee of up to 6 pence may apply)
- **IE** 01450 2655 (0.03 € per minute at peak. Off peak 0.0088 € per minute)

## Environmentally friendly waste disposal

All packaging must be disposed of in accordance with environmental guidelines. This appliance is certified in accordance with European Directive 2012/19/EU on the waste electrical and electronic equipment (WEEE). This directive provides the framework for the EU-wide collection and reuse of used appliances.

## Contents

	Page
Intended use	1
Programmes	1
Setting and adjusting the programme	3
Washing	3/4
After washing	4
Individual settings	5/6
Important information	6
Overview of programmes	7
Safety instructions	8
Consumption values	8
Care and cleaning	9
Information on the display panel	9
Maintenance	10
What to do if ...	11

### Protection of the environment/Conservation tips

- Always fill the washing machine with a maximum amount of laundry for the particular programme.
- The selectable temperatures apply to the care labels on the textiles. The temperatures in the machine may deviate from this so that you get the optimum mix of energy-saving and washing results
- Wash normally soiled laundry without a prewash.
- Measure the detergent according to the manufacturer's instructions and water hardness.
- If the laundry is subsequently dried in a tumble drier, select the spin speed according to the tumble drier manufacturer's instructions.

## Intended use

- for domestic use only,
  - for washing machine-washable fabrics and hand-washable wool in detergent solution,
  - to be operated with cold drinking water and commercially available detergents and care products which are suitable for use in washing machines,
  - The washing machine may be operated by children from 8 years of age, by persons who have limited physical, sensory or mental abilities and by persons who have inadequate experience or knowledge, provided they **are super-vised** or **have been instructed** by a responsible person.
- Follow the safety instructions on page 8!
  - Do not leave children unattended near the washing machine.
  - The washing machine is not to be used by children or persons not familiar with the operating instructions.
  - Keep pets away from the washing machine.

Do not switch on the washing machine until you have read these instructions and the separate Installation instructions!

## Programmes

Detailed overview of programmes → page 7.  
Spin speed can be selected individually, irrespective of the selected programme and programme progress.

	Cottons	hard-wearing fabrics
	+ Prewash	hard-wearing fabrics, prewash
	Mixed Load	Different types of laundry
	SuperQuick 15'	Short programme
	Rinse/Spin	Laundry washed by hand, <b>Aqua Plus</b> button activated; if only using the spin cycle, deactivate the button
	Drain	Drain rinsing water with <b>Rinse Hold</b> (without final spin)
	Wool	Hand/machine washable wool
	Delicate	Delicate washable fabrics
	Easy-Care	synthetic fabrics

## Preparation

Correct installation according to the separate installation actions.

### Checking the machine

- Never use a damaged machine!
- Contact customer service!

### Connecting the mains plug

Make sure your hands are dry! Handle the plug only!

### Turning on the tap

Insert for liquid detergent (depending on model) → page 6

**Compartment II:** detergent for the main wash, water softener, bleach, stain remover

**Compartment** Fabric softener, bleach

**Compartment I:** Detergent for prewash

**Additional functions**

**Display panel / option buttons**

Spin

- 1200
- 1000
- 800
- 400
- Rinse Hold

Programme Flow

- Wash
- Rinse
- Spin
- End

**Programme**

Easy-Care

30°

40°

30°

30°

30°

Delicate

Wool

SuperQuick 15'

Drain

1 - 24 (Ready in)	End of programme a
Status displays	Programme sequenc
Rinse Hold	Without final spin
	Childproof lock →

*Before the first wash,*  
run a wash cycle with no laundry in the machine → Page 9.

## Sorting and loading laundry

Follow the manufacturer's care information!  
Sort laundry according to the label's indications.  
And according to type, colour, soiling and temperature.  
Do not exceed the maximum load → Page 7.

*Observe important information!* → Page 6

Wash laundry of different sizes in the same wash programme.  
Close the door. Take care not to trap items of laundry between the washing machine door and seal.

## Add detergent and care products

Measure detergent according to:  
amount of laundry, soiling, water hardness (ask your water supply company) and  
manufacturer's instructions.

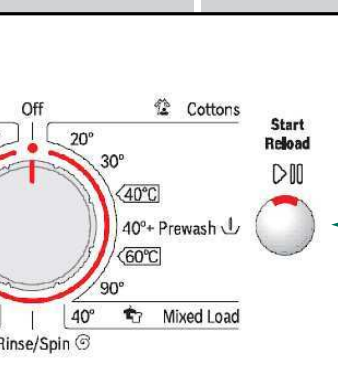
For models without insert for liquid detergent:  
Pour liquid detergent into the appropriate dispenser and place in the drum.

**i** Dilute viscous fabric softener and fabric conditioner with water.  
This prevents blockages.

## Setting\*\* and adjusting programmes

Programme selector

Start /  
Reload



after ...

ce displays:  
nd

page 5

**i** \*\*If flashes in the display panel,  
the childproof lock is active  
→ Deactivate childproof lock,  
page 5.

Additional functions and option  
buttons → Individual settings,  
page 5.

Press Start/Reload

**i** All buttons are sensitive and need  
only to be touched lightly. Press and  
hold the (Ready In) option button  
for an automatic run through all  
setting options.

**i** Programme selector for  
switching the machine on  
and off and for selecting the  
programme. Can be turned  
in either direction.

# Washing

Detergent drawer with  
compartments I, II,

Drum

Control panel

Door handle



Service door

# Washing

## Removing the washing

Open the washing machine door and remove the washing.  
If **Rinse Hold** (without final spin) is active: turn the programme selector to  
**Drain** or select the spin speed.  
Choose **Start/Reload** .



- Remove any foreign objects. Risk of rusting.
- Leave the washing machine door and detergent door open  
so that any residual water can evaporate.

## Turn the tap off

Not required for Aqua-Stop models → Refer to Installation instructions.

## Switching off

Turn the programme selector to **Off**.

## End of programme when ...

... Start/Reload is off and - - appears on the display panel.

Note: If display panel lighting is switched off, press any button → Energy  
saving mode, page 5.

## Interrupting the programme

Programmes at high temperatures:

- Cool washing: Select **Rinse/Spin** .
- Press **Start/Reload** .

Programmes at lower temperatures:

- Select **Rinse/Spin** (deactivate **Water Plus** button) or  
**Drain** .
- Press **Start/Reload** .

## Changing the programme if ...

... you have selected the wrong programme by mistake:

- Reselect the programme.
- Press **Start/Reload** . The new programme starts from the beginning.

## Reloading laundry if ... → page 5

... Press **Start/Reload** ; **YES** is displayed on the display panel. If **NO**  
is lit, the washing machine door cannot be opened.  
Press **Start/Reload** .

# Individual settings

## Option button (Ready in)

When a programme is selected, its duration is displayed. You can delay the end of the programme before it begins. The ready in-time can be set in increments of one hour up to a maximum of 24 hours. Press the (Ready in) button until the required number of hours is displayed (h = hour). Choose **Start/Reload**. Once the programme has begun, no further adjustment is possible.

## Spin (spin speed in rpm/ Rinse Hold (without final spin))

You can change the displayed spin speed or choose Rinse Hold (without final spin, laundry soaks in the last rinsing water, display panel ---). The maximum selectable spin speed depends on the model and which programme is currently selected.

## Additional functions → Overview of programmes, page 7

SpeedPerfect	For washing in a shorter time with a washing outcome comparable to that of the standard programme. Maximum load → Overview of programmes, page 7.
EcoPerfect	For saving energy with a washing performance comparable to that of the standard programme.
Reduced Ironing	Special spin sequence with subsequent fluffing. Gentle final spin: residual moisture in the laundry slightly increased.
Water Plus	Increased water level and additional rinse cycle, extended washing time. For areas with very soft water or for further enhancing the spin result.

## Childproof lock

**CL** in the display panel

You can lock the washing machine to prevent the functions you have set from being changed inadvertently.

**To activate:** press and hold the **Start/Reload** button for approx. 5 seconds after the programme has started. **CL** appears in the display panel for approx. 5 seconds, then the Finish-in time is shown again.

**To deactivate:** press and hold the **Start/Reload** button for approx. 5 seconds.

**Note:** If a button is pressed when the childproof lock is active, **CL** lights up for approx. 5 seconds, then the Finish-in time is displayed again.

**CL** lights up continuously if the programme selector is adjusted when the Childlock is active.

## Reloading

**YES** in the display panel

Press **Start/Reload** if you want to add additional items of laundry after the programme has started. The machine checks whether reloading is possible.

**YES** lights: reloading is possible.

**NO** flashes: wait until **YES** lights.

**Note:** do not open the door until **YES** is lit.

**NO**: it is not possible to reload.

**Note:** for safety reasons, the washing machine door remains locked when the water level and/or temperature is high, or during spinning.

To continue the programme, press the **Start/Reload** button.

## Energy saving mode

The display panel lighting goes out after a few minutes, **Start/Reload** flashes. Press any button to switch on the lighting.

## Start/Reload

To start the programme or to subsequently load additional laundry, and to activate/deactivate the childproof lock.

# Individual settings

## Signal

- Activating the mode for setting the signal volume
 

Set to • 1 step, the display panel lights up press and hold + 1 step, release
- Setting the volume for...
 

1200 1000 800 400 Rinse Hold direct 1 step setting the volume\* 1200 1000 800 400 Rinse Hold setting the volume\* set to •

\* if necessary, select the function several times



## Important information



### Protecting the laundry and the machine

- When determining the dosage of all washing powders, additives and cleaning agents, you must follow the manufacturer's instructions..
- Empty all pockets
- Check for metal items (paper-clips, etc.).
- Wash delicates in a laundry bag (tights, curtains, underwired bras).
- Fasten zips, do up any buttons.
- Brush sand out of pockets and collars.
- Remove curtain fittings or place in the laundry bag.



### Laundry with varying degrees of soiling

light	Wash new items of clothing separately.
	Do not prewash. If required, choose the additional function <b>SpeedPerfect</b> .
	Pre-treat any stains as necessary.
intense wash	Load less laundry. Choose a programme with a prewash.



### Soaking Load laundry of the same colour.

Pour soaking agent/detergent into compartment **II** in accordance with the manufacturer's instructions. Turn the programme selector to **Cottons 30 °C** and press **Start/Reload**. After approx. 10 minutes, press **Start/Reload** to pause the programme. Once the required soaking time has elapsed, press **Start/Reload** again to continue the programme, or select a different programme.



### Starch Laundry should not be treated with fabric softener.

Starching is possible in all wash programmes if liquid starch is used. Pour the starch in accordance with the manufacturer's instructions into fabric softener compartment (rinse first if necessary).



### Dyeing / Decolouring

Dye should only be used in normal household quantities. Salt may damage stainless steel. Always follow the dye manufacturer's instructions. Do **not** use the washing machine for decolouring clothes.

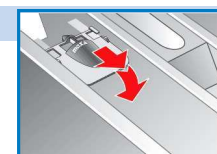


### Insert for liquid detergent depending on model

Position the insert for dispensing liquid detergent:

- Remove the detergent drawer completely → page 9
- Slide the insert forwards and click into place.

Do not use the insert (slide upwards): for gel detergents and washing powder, for programmes with **+ Prewash** and end time option.



# Overview of programmes

→ Refer to the table of consumption values on page 8, and advice and warnings on page 6.

Programmes	°C	max.	Type of laundry	Additional functions; Information
<b>Cottons</b>	20, 30, 40, 60, 90 °C	8 kg/ 4 kg*	hard-wearing fabrics, cottons or linen that can be washed at 90 °C	SpeedPerfect *, EcoPerfect , Reduced Ironing , Water Plus
<b>Easy-Care</b>	30, 40 °C	4 kg	easy-care cotton, linen, synthetic or blended fabrics	SpeedPerfect , EcoPerfect , Reduced Ironing , Water Plus
<b>Mixed Load</b>	40 °C	3,5 kg	cotton or synthetic fabrics	SpeedPerfect , EcoPerfect , Reduced Ironing , Water Plus ; different types of laundry can be washed together
<b>Delicate</b>	30 °C		for delicate fabrics, e.g., silk, satin, synthetic fibres or blended fabrics (e.g. curtains)	SpeedPerfect , EcoPerfect , Reduced Ironing , Water Plus ; no spin between rinse cycles
<b>Wool</b>	cold, 30 °C	2 kg	hand/ machine washable wool	particularly delicate wash programme to avoid shrinkage of laundry; longer programme breaks (fabrics rest in the detergent solution)
<b>SuperQuick 15'</b>	30 °C		synthetic cotton, linen, synthetic fibres or blended fabrics	short programme of approx. 15 minutes, suitable for lightly soiled laundry
<b>Additional programmes</b>			<b>Rinse/Spin</b> , <b>Drain</b>	

\* reduced load with additional function **SpeedPerfect** .

For programmes without prewash, add detergent to compartment **II**. For prewash programmes, distribute the detergent between compartments **I** and **II**.

9310 / 9000939273	WAQ243D0GB	Robert Bosch Hausgeräte GmbH Carl-Wery Str. 34 81739 Munich / Germany
-------------------	------------	---



## Safety instructions

- Carefully read the instruction manual and the information enclosed, and act accordingly.
- Keep the machine's documentation for future reference.

### Risk of electric shock!

- Never pull the cable to disconnect the mains plug!
- Never insert/disconnect the mains plug with damp hands.

### Danger to life!

For worn-out appliances:

- Disconnect the mains plug.
- Sever the mains cable and discard along with the plug.
- Destroy the lock on the washing machine door. This will prevent children from locking themselves in and risking their lives.

### Danger of suffocation!

- Keep packaging, film and packaging parts out of the reach of children.

### Risk of poisoning!

- Keep detergents and care products out of the reach of children.

### Risk of explosion!

- Items of laundry pretreated with cleaning agents containing solvents, e.g. stain remover/cleaning solvent may lead to an explosion after being loaded into the washing machine.

Rinse items of laundry thoroughly by hand beforehand.

### Risk of injury!

- The washing machine door may become very hot.
- Be careful when draining hot detergent solution.
- Do not climb onto the washing machine.
- Do not lean on the open washing machine door.
- Do not reach into the drum if it is still rotating.
- Be careful when opening the detergent drawer while the machine is in operation.

## Consumption values

Programme	Load	Electricity***	Water***	Programme duration***
Cottons 20 °C	8 kg	0.29 kWh	73 l	2 1/2 h
Cottons 30 °C	8 kg	0.40 kWh	73 l	2 1/2 h
Cottons 40 °C*	8 kg	1.10 kWh	73 l	2 3/4h
Cottons 60 °C	8 kg	1.20 kWh	73 l	2 3/4h
Cottons 90 °C	8 kg	2.20 kWh	85 l	2 1/2 h
Easy-Care 40 °C*	4 kg	0.79 kWh	56 l	2 h
Mixed Load 40 °C	3,5 kg	0.59 kWh	48 l	1h
Delicate 30 °C	2 kg	0.21 kWh	35 l	3/4 h
Wool 30 °C	2 kg	0.19 kWh	40 l	3/4 h

\* Programme setting for testing in accordance with valid standard EN60456.  
Note on comparative tests: For testing the test programmes, wash the specified load using the maximum spin speed.

Programme	Additional function	Load	Annual energy consumption	Annual water consumption
Cottons 40°C/60 °C	EcoPerfect **	8/4 kg	177 kWh	8200 l

\*\* Programme setting for testing and energy labelling in accordance with EU directive 2010/30/EU with cold water (15 °C).

\*\*\* The values deviate from the indicated values depending on water pressure, hardness, and inlet temperature, ambient temperature, type, amount and soiling of the laundry, detergent used, fluctuations in the power supply and selected additional functions.



# Care and cleaning



- **Risk of electric shock!** Disconnect the mains plug.
- **Risk of explosion!** Do not use solvents.



## Before the first wash

Do not put laundry in the machine! Turn on the tap. Put into compartment II:

- approx. 1 litres of water
- detergent (measure according to the manufacturer's instructions for lightly soiled laundry and water hardness)

Turn the programme selector to **Cottons 60 °C** and press **Start/Reload** . At the end of the programme, turn the programme selector to **Off**.



## Machine housing, control panel

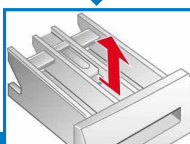
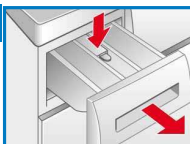
- Remove detergent and cleaning agent residue.
- Wipe with a soft, damp cloth.
- Do not wash the machine with a jet of water!



## Cleaning the detergent drawer ...

... if it contains detergent or fabric softener residues.

1. Pull out, press insert down and remove drawer completely.
2. To remove the insert: press upwards from below with your finger.
3. For models with insert for liquid detergent: Slide the insert upwards and remove it from the back.
4. Clean the detergent dispenser tray and inserts with water and a brush and dry them.
5. Attach the insert and engage (connect the cylinder to the guide pin).
6. Push in the detergent drawer.



Leave the detergent drawer open so that any residual water can evaporate.



## Drum

Leave the washing machine door open so that the drum can dry out.

For rust stains, use chlorine-free cleaning agent, not steel wool.



## Descaling *Ensure there is no laundry in the machine!*

This will not be necessary if the correct dosage of detergent is used. If it is, descale the appliance according to the manufacturer's instructions. Descaling products can be acquired on the website or from customer services → *Installation instructions*.



## Emergency release *(e.g. in the event of a power cut)*

The programme continues to run when the power has been restored. However, if the laundry has to be removed, the washing machine door can be opened as follows:



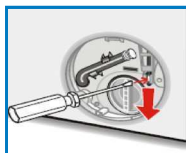
### **Risk of scalding!**

*The detergent solution and laundry may be hot. Let it cool.*

*Do not reach into the drum if it is still rotating.*

*Do not open the washing machine door if water can be seen through the glass.*

1. Turn the programme selector to **Off** and disconnect the mains plug.
2. Drain the detergent solution → *page 10*.
3. Pull the emergency release downwards with a tool and release. The washing machine door can then be opened.



## Information on the display panel *depending on model*

<b>E: 15</b>	Close the washing machine door properly; laundry may be caught.
<b>E: 17</b> <b>E: 29</b>	Turn on the (cold water) tap fully, supply hose kinked or trapped; Clean the filter → <i>page 10</i> , water pressure too low.
<b>E: 18</b>	- Detergent solution pump blocked; Clean the detergent solution pump → <i>page 10</i> . - Drainage hose / waste pipe blocked; Clean the drainage hose at the siphon → <i>page 10</i> . - Heavy foam build-up → <i>page 10</i> , status indicator <b>Wash</b> flashes.
<b>E: 23</b>	Water in the base tub, appliance leaking. Call customer services!
<b>R: 10</b>	- Open the (hot water) tap fully. - Inlet hose kinked/trapped. - Water pressure too low. Clean the filter → <i>page 10</i> . - Hot water hose not connected; appliance will operate using cold water only. Ignore information, only for first wash cycle.
<b>CL</b>	Childproof lock activated: to deactivate → <i>page 5</i> .

# Maintenance



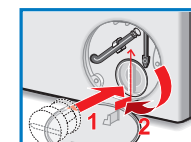
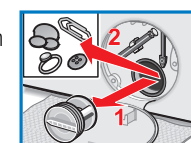
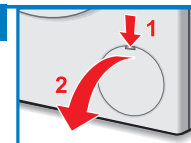
- **Risk of burning!** Allow the detergent solution to cool.
- Turn off the tap.



## Drain pump blocked

Set programme selector to **Off**, pull out the mains plug.

1. Open service flap.
2. Take the drainage hose out of the holder.
3. Remove sealing cap, allow detergent solution to flow out. Have a suitable container ready. Push up the closing cap and place the drain hose back in its holder.
4. Carefully unscrew the pump cover (Caution! residual water). Clean the interior, pump cover thread and pump housing (fan impeller in the detergent-solution pump must rotate).
5. Reinsert and screw on pump cover. Handle should be vertical.
6. Close the service flap.



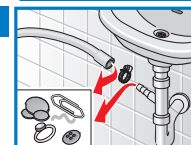
To prevent unused detergent from flowing into the outlet during the next wash: Pour 1 litre of water into dispenser **II** and start the **Drain** programme.



## Drainage hose on the siphon blocked

Set programme selector to **Off**, pull out the mains plug.

1. Loosen hose clip, carefully remove drainage hose. (Caution! Residual water.)
2. Clean drainage hose and siphon spigot.
3. Re-attach drainage hose and secure connection point with hose clip.



## Filter blocked in water inlet hose



### **Risk of electric shock!**

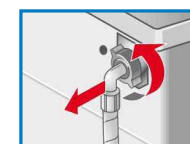
*Do not immerse Aqua-Stop safety device in water (contains electric valve).*

Release water pressure in the supply hose:

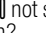
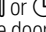

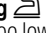


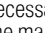
1. Turn off the tap!
2. Select any programme (except **Rinse/Spin** **Drain** ).
3. Press **Start/Reload** button. Leave programme for approx. 40 seconds.
4. Set programme selector to **Off**. Pull out the mains plug.  
**Clean the filter:**
5. Disconnect the hose from the water tap. Clean filter with small brush.

**and/or** for standard and Aqua-Secure models: remove hose from the rear of the appliance. Take out filter with pliers and clean.

6. Connect the hose and check for leaks.



# What to do if...

Water is leaking out	<ul style="list-style-type: none"> <li>– Attach/replace the drainage hose correctly.</li> <li>– Tighten the screw connection of the supply hose.</li> </ul>
No water supply. Detergent not dispensed.	<ul style="list-style-type: none"> <li>– <b>Start/Reload</b>  not selected?</li> <li>– Tap not turned on?</li> <li>– Filter blocked? Clean the filter → <i>page 10</i>.</li> <li>– Supply hose kinked or trapped?</li> </ul>
The appliance door will not open.	<ul style="list-style-type: none"> <li>– Safety function active. Programme stopped? → <i>page 4</i>.</li> <li>– <b>Rinse Hold</b> (without final spin) selected? → <i>page 3, 4</i>.</li> <li>– Can be opened by emergency release only? → <i>page 9</i>.</li> <li>– Door locked after the washing machine is switched off: Switch on the washing machine and wait for 5 seconds.</li> </ul>
The selected programme does not start.	<ul style="list-style-type: none"> <li>– <b>Start/Reload</b>  or  (Ready in) time selected?</li> <li>– Washing machine door closed?</li> <li>– Childproof lock active? Deactivate → <i>page 5</i>.</li> </ul>
Detergent solution is not drained.	<ul style="list-style-type: none"> <li>– <b>Rinse Hold</b> (without final spin) selected? → <i>page 3, 4</i>.</li> <li>– Clean the detergent solution pump → <i>page 10</i>.</li> <li>– Clean the waste pipe and/or drainage hose.</li> </ul>
No water can be seen in the drum.	<ul style="list-style-type: none"> <li>– Not a fault. Water remains inside below the visible area.</li> </ul>
Spin result not satisfactory. Laundry wet/too damp.	<ul style="list-style-type: none"> <li>– Not a fault. Spin control system has stopped the spin cycle. Uneven distribution of laundry.</li> <li>– Distribute large and small items of laundry evenly in the drum.</li> <li>– <b>Reduced Ironing</b>  selected? → <i>page 5</i>.</li> <li>– Selected speed too low? → <i>page 5</i>.</li> </ul>
Programme duration changes suddenly during operation.	<ul style="list-style-type: none"> <li>– Not a fault. The program time can vary according to the distribution of laundry, with it therefore being possible for the display panel to show adjustments in the duration.</li> </ul>
Spin cycle performed several times.	<ul style="list-style-type: none"> <li>– Not a fault. The balance control system has detected an imbalance and is attempting to redress this by repeating the spin.</li> </ul>
Residual water in the compartment for care products.	<ul style="list-style-type: none"> <li>– Not a fault: the action of the care product is not affected.</li> <li>– Clean the compartment if necessary → <i>page 9</i>.</li> </ul>
Odour formation in the washing machine.	<ul style="list-style-type: none"> <li>– Run programme  <b>Cottons 90 °C</b> without laundry. Use standard detergent.</li> </ul>
Status display <b>wash</b> flashing. Appliance has detected a detergent overload.	<ul style="list-style-type: none"> <li>– Too much detergent used?</li> <li>– If foam is escaping from the detergent drawer: mix a small quantity (ca. 15 ml) of fabric softener with ½ litre of water and pour into compartment <b>II</b> (<i>not with outdoor or down fabrics</i>).</li> <li>– Reduce the detergent dosage for the next wash cycle.</li> </ul>
Intense noise formation, vibrations and "wandering" during the spin cycle.	<ul style="list-style-type: none"> <li>– Are the appliance feet fixed?</li> <li>– Secure the appliance feet → <i>Installation instructions</i>.</li> <li>– Transportation safety devices removed?</li> <li>– Remove transportation safety devices → <i>Installation instructions</i>.</li> </ul>
Display panel/indicator lamps remain turned off while the machine is working.	<ul style="list-style-type: none"> <li>– Energy-saving mode → <i>page 5</i>.</li> <li>– Power cut?</li> <li>– Fuses triggered? Reset/change the fuse.</li> <li>– If the fault occurs repeatedly, call customer services.</li> </ul>
Programme sequence longer than usual.	<ul style="list-style-type: none"> <li>– Not a fault. Unbalanced load detection system adjusts imbalance by repeatedly distributing the laundry.</li> <li>– Not a fault: foam detection system active; adds an additional rinse cycle.</li> </ul>
Detergent residues on the laundry.	<ul style="list-style-type: none"> <li>– Occasionally, phosphate-free detergents contain water-insoluble residues.</li> <li>– Select  <b>Rinse/Spin</b>  or brush out the laundry after washing.</li> </ul>

If you cannot correct a fault yourself or if a repair is necessary:

- Turn the programme selector to **Off** and remove the mains plug from the socket.
- Turn off the water supply and call customer services → *Installation instructions*.



Register your new Bosch now:  
[www.bosch-home.com/welcome](http://www.bosch-home.com/welcome)



## Washing machine WAQ243D0GB



**BOSCH**

en operating instructions