

Your washing machine

Congratulations - You have opted for a modern, high-quality domestic appliance manufactured by Bosch. The washing machine is distinguished by its economical water and energy consumption. Each machine that leaves our factory has been inspected thoroughly to ensure that it functions properly and is in perfect condition.

Further information: www.bosch-home.com

You can find the contact details for your nearest after-sales service here or in the after-sales service directory (depending on model).
GB 0844 8928979
Calls from a BT landline will be charged at up to 3 pence per minute. A call set-up fee of up to 6 pence may apply.
IE 01450 2655

Environmentally friendly waste disposal

All packaging must be disposed of in accordance with environmental guidelines. This appliance is certified in accordance with European Directive 2002/96/EC on waste electrical and electronic equipment (WEEE). This directive provides the framework for the EU-wide collection and reuse of used appliances.

Contents

Intended use	1
Programmes	1
Setting and adjusting the programme	3
Washing	3/4
After washing	4
Individual settings	5/6
Important information	6
Overview of programmes	7
Safety instructions	8
Consumption values	8
Care	9
Information on the display panel	9
Maintenance	10
What to do if...	11

Environmental protection/Conservation tips

- Always fill the washing machine with a maximum amount of laundry for the relevant programme.
- Wash normally soiled laundry without a pre-wash.
- Instead of **Βαμβάκερά (Cottons) 90 °C**, choose the programme **Βαμβάκερά (Cottons) + EcoPerfect 60 °C**. Comparable cleaning result with significantly lower energy consumption.
- Measure the detergent according to the manufacturer's instructions and water hardness.
- If the laundry is then dried in the tumble dryer, select the spin speed according to the instructions of the dryer manufacturer.

Intended use

- for domestic use only,
- for machine-washable fabrics and hand-washable wool in detergent solution,
- to be operated with cold drinking water and commercially available detergents and care products which are suitable for use in washing machines.

- Do not leave children unattended near the washing machine.
- The washing machine is not to be used by children or persons not familiar with the operating instructions.
- Keep pets away from the washing machine.

Read these instructions and the separate installation instructions before operating the washing machine.

Programmes
Detailed overview of programmes → *page 7*.
Temperature and spin speed can be selected individually, depending on the selected programme and programme progress.

αμβάκερά (Cottons)	
SpeedPerfect	Hard-wearing fabrics
EcoPerfect	
Πρόπλυση (+ Prewash)	
λιγότερο σιδέρωμα asy-iron)	
υνθετικά (Easy-Care)	
SpeedPerfect	Easy-care fabrics
EcoPerfect	
Πρόπλυση (+ Prewash)	
νάμεικτα (Mix)	Different types of laundry
εταξωτά Delicates/Silk)	Delicate washable fabrics
Μάλλινα (Wool)	Hand/machine-washable wool
ρήγορο 15' uperQuick 15')	Short programme
έβαλμα/Στύψιμο rinse/Spin)	Hand-wash laundry, Έξτρα ξέβγ (Rinse plus) activated; if only using the spin cycle, deactivate the button
ντλήση (Drain)	Drain rinsing water for - - - - (without final spin)

Preparation

Correct installation according to the separate Installation instructions.

Checking the machine
– Never use a damaged machine.
– Inform the after-sales service.

Connecting the mains plug
Make sure your hands are dry. Take hold of the plug only.

Turning the tap on
Read these instructions and the separate installation instructions before operating the washing machine.

Sorting and loading laundry

Follow the manufacturer's care information. According to the information on the care labels. Do not exceed the maximum load → *page 7*.

Observe the important information → page 6.
Insert large and small items of laundry between the washing machine door and the rubber seal.

Add detergent and care products

Measure accordingly: Amount of laundry, soiling, water hardness (ask your water supply company) and manufacturer's instructions. Pour liquid detergent into the appropriate dispenser and place in the drum.

Dilute thick fabric softener and fabric conditioner with water. This prevents blockages.

Compartment II: Detergent for the main wash, water softener, bleach, stain remover
Compartment ☼: Fabric softener, starch
Compartment I: Detergent for pre-wash

Setting** and adjusting programmes

Display panel/ options buttons

Start/ Pause

Additional function

Status indicators

Programme selector

88:88

☼

☼

☼

Έναρξη Παύση

Έξτρα ξέβγ.

Τέλος Στύψιμο

Ξέβγαλμα

Πλύση

Έτοιμο

Συνθετικά

+ SpeedPerfect

+ EcoPerfect

+ Πρόπλυση

Ανάμεικτα

Μεταξωτά

Μάλλινα

Γρήγορο 15'

Off

Βαμβάκερά

+ SpeedPerfect

+ EcoPerfect

+ Πρόπλυση

+ Λιγότερο σιδέρισμα

Ξέβγαλμα/Στύψιμο

Αντλση

---- - 1000*

☼

Select the spin speed (* depending on the model) or ---- no final spin, laundry soaks in the last rinsing water)

☼

End

☼

Spin

☼

Rinse

☼

Wash

☼

Finish

Εσλδ - 90 °C

☼

Selecting the temperature

1 - 24h

☼

Programme end after

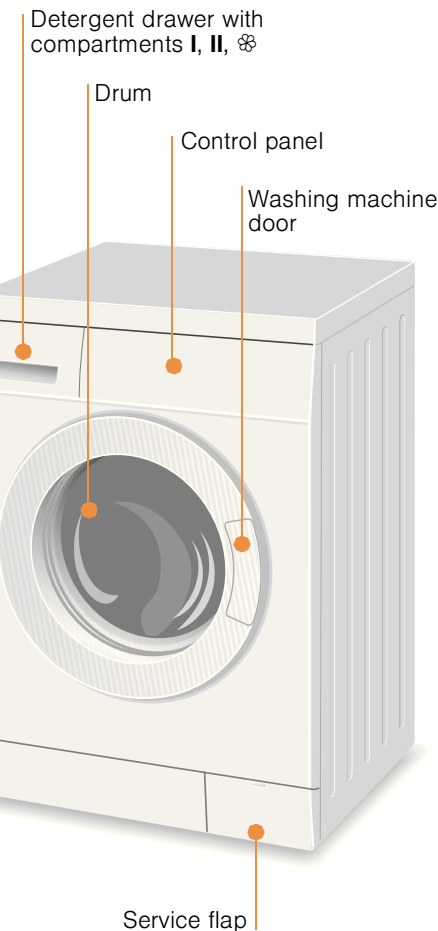
☼

Childproof lock → *page 5*

☼

Programme selector for switching the machine on and off and for selecting the programme. Can be turned in either direction.

Washing



Removing the washing

Open the washing machine door and remove the washing. If ---- (without final spin) is active: Turn the programme selector to **Αντλση (Drain)** or select the spin speed. Select **☼ Έναρξη/Παύση (Start/Pause)**.

- Remove any foreign objects - risk of rusting.
- Leave the washing machine door and detergent drawer open so that any residual water can evaporate.

Turning the tap off

Not required for HydroSafe models → *Refer to installation instructions*

Switching off

Turn the programme selector to **Off**.

End of programme when ...

... the status indicator **☼ (Spin)** flashes and **End** appears in the display panel.

Interrupting the programme

- Programmes at high temperatures:
- Cool washing: Select **Ξέβγαλμα/Στύψιμο (Rinse/Spin)**.
 - Select **☼ Έναρξη/Παύση (Start/Pause)**.
- Programmes at lower temperatures:
- Ξέβγαλμα/Στύψιμο (Rinse/ Spin) (deactivate **☼ Έξτρα ξέβγ (Rinse plus)**) or select **Αντλση (Drain)**.
 - Select **☼ Έναρξη/Παύση (Start/Pause)**.

Changing the programme, if ...

- ... you have selected the wrong programme by mistake:
- Reselect the programme.
 - Select **☼ Έναρξη/Παύση (Start/Pause)**. The new programme starts from the beginning.

Individual settings

- Options buttons**
The spin speed and temperature can be changed before and during the selected programme runs. The effects depend on the programme progress.
- ☼ (Spin speed / without final spin)**
You can change the displayed spin speed. The maximum selectable spin speed depends on the model and on which programme is currently selected.
- ☼ (Temperature)**
You can change the displayed washing temperature. The maximum washing temperature that can be selected depends on the programme that has been set.
- ☼ (Finished in)**
When you select the programme, the relevant programme duration is displayed. You can delay the start of the programme before it begins. The "finished in" time can be set in increments of one hour up to a maximum of 24 hours. Press the **☼ (Finished in)** button repeatedly until the required number of hours is displayed (h = hour). Select **☼ Έναρξη/Παύση (Start/Pause)**.
- Additional function** → and overview of programmes, see *page 7*
- ☼ Έξτρα ξέβγ (Rinse plus)**
Additional rinse cycle. For areas with very soft water or for further enhancing the washing result.
- Childproof lock**
You can lock the washing machine to prevent the functions you have set from being changed inadvertently.
ON/OFF: Press and hold the **☼ Έναρξη/Παύση (Start/Pause)** button for approx. 5 seconds after the start/end of the programme.
Note: The childproof lock can remain activated until you wish to start the next programme, even after switching off the machine. Then you can deactivate the childproof lock before the start of the programme and activate it again as necessary once the programme has started.
- ☼ Έναρξη/Παύση (Start/Pause)**
For starting or interrupting the programme.

Important information

- Protecting the laundry and the machine**
 - When determining the dosage of all washing powders, additives and cleaning agents, you must follow the manufacturer's instructions.
 - Empty pockets.
 - Look out for metal items (paperclips, etc.).
 - Wash delicates in a laundry bag (tights, curtains, underwired bras).
 - Fasten zips, do up any buttons.
 - Brush sand out of pockets and collars.
 - Remove curtain fittings or place in the laundry bag.
- Laundry with varying degrees of soiling**
Wash new items of clothing separately.
light Do not pre-wash. If required, choose the + **SpeedPerfect** programme.
Pre-treat any stains as necessary.
heavy Do not load as much laundry. Select the program with prewash.
- Soaking** Load laundry of the same colour
Pour soaking agent/detergent into compartment **II** in accordance with the manufacturer's instructions. Turn the programme selector to **Cottons 30 °C** and select **☼ Έναρξη/Παύση (Start/Pause)**. After approx. 10 minutes, press **☼ Έναρξη/Παύση (Start/Pause)** to pause the programme. Once the required soaking time has elapsed, select **☼ Έναρξη/Παύση (Start/Pause)** again to continue the programme, or select a different programme.
- Starching** Laundry must not be treated with fabric softener
Starching is possible in all wash programmes if liquid starch is used. Pour the starch in accordance with the manufacturer's instructions into fabric softener compartment **☼** (rinse first if necessary).
- Dyeing / Bleaching**
Dye should only be used in normal household quantities. Salt may damage stainless steel. Always follow the dye manufacturer's instructions! Do **not** use the washing machine for bleaching clothes!

Programmes	°C	max.	Type of laundry	Additional functions; information
Βαμβακερά (Cottons)	Ε.α.λ.δ. - 90 °C	7 kg/ 4 kg*	Hard-wearing fabrics, heat-resistant fabrics made of cotton or linen	Εξίπα έξβγ (Rinse plus)
+ SpeedPerfect *	Ε.α.λ.δ. - 90 °C			Εξίπα έξβγ (Rinse plus); shorter programme
+ EcoPerfect	Ε.α.λ.δ. - 90 °C			Εξίπα έξβγ (Rinse plus); energy-saving programme
+ Προβήλιο (+ Prewash)	Ε.α.λ.δ. - 90 °C			Εξίπα έξβγ (Rinse plus); prewash at 30 °C
+ Ανόργανο αιδέρισμα (Easy-Iron)	Ε.α.λ.δ. - 90 °C			Εξίπα έξβγ (Rinse plus); special spin sequence with subsequence fluffing.
Συνθετικά (Easy-Care)	Ε.α.λ.δ. - 60 °C	3 kg	Easy-care fabrics made of cotton, linen, synthetic fibres or blended fabrics	Εξίπα έξβγ (Rinse plus)
+ SpeedPerfect	Ε.α.λ.δ. - 60 °C			Εξίπα έξβγ (Rinse plus); shorter programme
+ EcoPerfect	Ε.α.λ.δ. - 60 °C			Εξίπα έξβγ (Rinse plus); energy-saving programme
+ Προβήλιο (+ Prewash)	Ε.α.λ.δ. - 60 °C	2 kg	Fabrics made of cotton or easy-care fabrics	Εξίπα έξβγ (Rinse plus); prewash at 30 °C
Ανάμεικτα (Mix)	Ε.α.λ.δ. - 40 °C			Εξίπα έξβγ (Rinse plus); different types of laundry can be washed together
Μεταξωτά (Delicates/Silk)	Ε.α.λ.δ. - 40 °C			Εξίπα έξβγ (Rinse plus); For delicate, washable fabrics, e.g. made of silk, satin, synthetic fibres or blended fabrics (e.g. curtains)
🧶 / Μάλλινα (Wool)	Ε.α.λ.δ. - 40 °C	2 kg	Hand- or machine-washable fabrics made of wool or containing wool	Εξίπα έξβγ (Rinse plus); Particularly gentle wash programme to prevent shrinkage of laundry. Longer programme breaks (fabrics rest in the detergent solution)
Γρήγορο 15' (SuperQuick 15')	Ε.α.λ.δ. - 40 °C			Εξίπα έξβγ (Rinse plus); Short programme, approx. 15 minutes, suitable for lightly soiled laundry
Additional programmes				Εξίπα έξβγ (Rinse/Spin), Αντήληση (Drain)
* reduced load				
i As a short programme, Ανάμεικτα (Mix), with the maximum spin speed is ideal.				
Programmes without pre-wash - add detergent to compartment II, programmes with pre-wash - distribute the detergent between compartments I and II.				

Robert Bosch Hausgeräte GmbH
Carl-Wery-Str. 34
81739 München / Germany

WAE20301GR ..



Safety instructions

- Read the instruction manual and installation instructions and all other information enclosed with the washing machine and act accordingly.
- Retain the documents for subsequent use.

Risk of electric shock

- Never pull the cable to disconnect the mains plug.
- Never insert/disconnect the mains plug with damp hands.

Danger to life

For worn-out appliances:

- Disconnect the mains plug.
- Sever the mains cable and discard along with the plug.
- Destroy the lock on the washing machine door. This will prevent children from locking themselves in and risking their lives.

Danger of suffocation

- Keep packaging, film and packaging parts out of the reach of children.

Risk of poisoning

- Keep detergents and care products out of the reach of children.

Risk of explosion

- Items of laundry pretreated with cleaning agents containing solvents, e.g. stain remover/cleaning solvent may cause an explosion after being loaded into the washing machine.
- Rinse items of laundry thoroughly by hand beforehand.

Risk of injury

- The washing machine door can become very hot.
- Be careful when draining hot detergent solution.
- Do not climb onto the washing machine.
- Do not lean on the open washing machine door.
- Do not reach into the drum if it is still rotating.
- Be careful when opening the detergent drawer while the machine is in operation.

Consumption values <small>depending on model</small>				
Programme	Load	Electricity***	Water***	Programme duration***
Βαμβακερά (Cottons) 20 °C	7 kg	0,32 kWh	68 l	2 ½ h
Βαμβακερά (Cottons) 30 °C	7 kg	0,56 kWh	68 l	2 ½ h
Βαμβακερά (Cottons) 40 °C*	7 kg	0,91 kWh	68 l	2 ½ h
Βαμβακερά (Cottons) 60 °C	7 kg	1,25 kWh	68 l	2 ¾ h
Βαμβακερά (Cottons) 90 °C	7 kg	2,16 kWh	74 l	2 ¾ h
Συνθετικά (Easy-Care) 40 °C*	3 kg	0,55 kWh	54 l	1 ¾ h
Ανάμεικτα (Mix) 40 °C	3 kg	0,45 kWh	35 l	1 ¼ h
Μεταξωτά (Delicates/Silk) 30 °C	2 kg	0,24 kWh	35 l	¾ h
🧶 / Μάλλινα (Wool) 30 °C	2 kg	0,22 kWh	47 l	¾ h
* Programme setting for testing in accordance with valid standard EN60456. Note on comparative tests: For testing the test programmes, wash the specified load using the maximum spin speed.				
Programme	Additional function	Load	Annual energy consumption	Annual water consumption
Βαμβακερά (Cottons) + EcoPerfect 40/60 °C		3,5/7 kg	165 kWh	10686 l
** Programme setting for testing and energy labelling in accordance with EU directive 2010/30/EU with cold water (15 °C). *** The values deviate from the indicated values depending on water pressure, hardness, and inlet temperature, ambient temperature, type, amount and soiling of the laundry, detergent used, fluctuations in the power supply and selected additional functions.				

Care

Before washing for the first time

Do not load any laundry into the machine. Turn on the tap. Add the following to compartment II:

- approx. 1 litre water
- detergent (dosage according to the manufacturer's instructions for light soiling and the appropriate degree of water hardness)

Set the programme selector to **Συνθετικά (Easy-Care) 60 °C** and select **▷⏸ Έναρξη/Παύση (Start/Pause)**. At the end of the programme, turn the programme selector to **Off**.

Machine housing, control panel

- Wipe with a soft, damp cloth.
- Do not use any abrasive cloths, scourers or cleaning agents (stainless steel cleaners).
- Remove detergent and cleaning agent residue immediately.
- Do not clean with a jet of water.

Cleaning the detergent drawer and housing...

... if it contains detergent or fabric softener residues.

- Pull the drawer out, press down the insert and fully remove the drawer from the housing.
- To remove the insert: press the insert upwards from below with your finger.
- Clean the detergent dispenser tray and insert with water and a brush and dry it. Also remove any detergent or fabric softener residues in the housing.
- Attach the insert and engage (connect the cylinder to the guide pin).
- Push in the detergent drawer.

Descaling

Leave the detergent drawer open so that any residual water can evaporate.

Wipe the inside of the rubber seal dry with a cloth. Leave the washing machine door open so that the drum can dry out. Rust stains - use chlorine-free cleaning agent, not steel wool.

Descaling

Descal the appliance according to the descaler manufacturer's instructions. This should not be necessary if the correct dosage of detergent is used.

Information on the display panel <small>depending on model</small>	
E3	Close the washing machine door properly; laundry may be caught.
E5	Open the tap completely, supply hose kinked or trapped; Clean the filter → page 10, Water pressure too low.
E6	Detergent solution pump blocked; Clean the detergent solution pump → page 10, Drainage hose/waste pipe blocked; Clean the drainage hose at the siphon → page 10.
E2	Motor fault. Call the after-sales service.

Maintenance

Detergent solution pump

Turn the programme selector to **Off** and disconnect the mains plug.

- Open and remove the service flap.
- For models with a drainage hose:** Remove the drainage hose from the retainer and pull it from the housing. Remove the container. Remove the sealing cap, allow the detergent solution to flow out. Replace the sealing cap and place the drainage hose in the retainer.
- For models without a drainage hose:** Carefully unscrew the pump cover until the detergent solution begins to flow out. When the service flap is half full, close the pump cover and empty the service flap. Repeat the above steps until all the detergent solution has completely drained out.
- Carefully unscrew the pump cover (residual water).
- Clean the interior, pump cover thread and pump housing (the impeller in the detergent solution pump must rotate).
- Replace the pump cover and screw it tightly.
- Place the service flap back on and close.

Drainage hose at the siphon

Turn the programme selector to **Off** and disconnect the mains plug.

- Loosen the hose clamp, carefully remove the drainage hose (residual water).
- Clean the drainage hose and siphon connecting piece.
- Reattach the drainage hose and secure the connection with the hose clamp.

Filter in the water supply

Risk of electric shock
Do not immerse the HydroSafe safety device in water (contains an electric valve).

Reduce the water pressure in the supply hose:

- Turn off the tap.
- Select any programme (except **Ξέβγαλμο/Στύψιμο (Rinse/Spin)** // **Αντήληση (Drain)**).
- Select **▷⏸ (Start/Pause)**. Let the programme run for approximately 40 seconds.
- Turn the programme selector to **Off**. Disconnect the mains plug. Clean the filter:

and/or for Standard and HydroSafe models:

Remove the hose on the rear of the appliance, Remove the filter with pliers and clean.

- Connect the hose and check for leaks.

What to do if ...

Water is leaking out.

No water supply. Detergent not dispensed.

Washing machine door cannot be opened.

Programme does not start.

Detergent solution is not drained.

Water not visible in the drum.

Unsatisfactory spin result. Laundry wet/too damp.

The programme duration changes during the wash cycle.

Spin cycle performed several times.

Residual water in the compartment for care products.

Odour formation in the washing machine.

☼ (Wash) display lamp flashes. Foam may be coming out of the detergent drawer.

Intense noise formation, vibrations and "wandering" during the spin cycle.

Noises during spin and drain cycles.

Display panel/indicator lamps do not function during operation.

Programme sequence longer than usual.

Detergent residues on the laundry.

Attach/replace the drainage hose correctly. Tighten the screw connection of the supply hose.

▷⏸ **Έναρξη/Παύση (Start/Pause)** not selected? Tap not turned on? Filter blocked? Clean the filter → page 10. Supply hose kinked or trapped?

Safety function active. Wait approx. 2 minutes. --- (without final spin) selected? → page 3, 4.

▷⏸ **Έναρξη/Παύση (Start/Pause)** or **▷ (Finished in)** selected? Washing machine door closed? Childproof lock active? Deactivate → page 5.

--- (without final spin) selected? → page 3, 4. Clean the detergent solution pump → page 10. Clean the waste pipe and/or drainage hose.

Not a fault - water below the visible area.

Not a fault - the unbalanced-load detection system has cancelled the spin cycle because of uneven distribution of the laundry. Distribute small and large items of laundry evenly inside the drum. Programme + **Λιγότερο αιδέρισμα (Easy-iron)** selected? → page 7. Speed selected too low? → page 5.

Not a fault - the programme sequence is optimised for the particular wash process. This may result in changes to the programme duration in the display field.

Not a fault - unbalanced load detection system adjusts the imbalance.

Not a fault - the action of the care product is not affected. Clean the insert if necessary → page 9.

Run programme **Βαμβακερά (Cottons) 90 °C** without laundry. Use standard detergent.

Too much detergent used? Mix 1 tablespoon of fabric softener with ½ litre of water and pour into dispenser II (not for outdoor and down-filled textiles!). Reduce the detergent dosage for the next wash cycle.

Are the appliance feet fixed? Secure the appliance feet → Installation instructions. Transportation safety devices removed? Remove the transportation safety devices → Installation instructions.

Clean detergent-solution pump → page 10.

Power cut? Fuses triggered? Reset/change the fuses. If the fault occurs repeatedly, call the after-sales service.

Not a fault - unbalanced load detection system adjusts imbalance by repeatedly distributing the laundry. Not a fault - foam detection system active - adds an additional rinse cycle.

Occasionally, phosphate-free detergents contain water-insoluble residues. Select **Ξέβγαλμο/Στύψιμο (Rinse/Spin)** or brush the laundry after washing.

If you cannot correct a fault yourself (switching on/off) or a repair is required:

- Turn the programme selector to **Off** and remove the mains plug from the socket.
- Turn off the water supply and call the after-sales service → Installation instructions.



en Instruction manual

Your washing machine

Congratulations - You have opted for a modern, high-quality domestic appliance manufactured by Bosch. The washing machine is distinguished by its economical water and energy consumption. Each machine that leaves our factory has been inspected thoroughly to ensure that it functions properly and is in perfect condition.

Further information: www.bosch-home.com

You can find the contact details for your nearest after-sales service here or in the after-sales service directory (depending on model).
GB 0844 8928979

Calls from a BT landline will be charged at up to 3 pence per minute. A call set-up fee of up to 6 pence may apply.
IE 01450 2655

Environmentally friendly waste disposal

All packaging must be disposed of in accordance with environmental guidelines.
This appliance is certified in accordance with European Directive 2002/96/EC on waste electrical and electronic equipment (WEEE). This directive provides the framework for the EU-wide collection and reuse of used appliances.

Contents

	Page
Intended use	1
Programmes	1
Setting and adjusting the programme	3
Washing	3/4
After washing	4
Individual settings	5/6
Important information	6
Overview of programmes	7
Safety instructions	8
Consumption values	8
Care	9
Information on the display panel	9
Maintenance	10
What to do if... ..	11



Environmental protection/Conservation tips

- Always fill the washing machine with a maximum amount of laundry for the relevant programme.
- Wash normally soiled laundry without a pre-wash.
- Instead of **Βαμβακερά (Cottons) 90 °C**, choose the programme **Βαμβακερά (Cottons) + EcoPerfect 60 °C**. Comparable cleaning result with significantly lower energy consumption.
- Measure the detergent according to the manufacturer's instructions and water hardness.
- If the laundry is then dried in the tumble dryer, select the spin speed according to the instructions of the dryer manufacturer.

Intended use

- for domestic use only,
- for machine-washable fabrics and hand-washable wool in detergent solution,
- to be operated with cold drinking water and commercially available detergents and care products which are suitable for use in washing machines.

- Do not leave children unattended near the washing machine.
- The washing machine is not to be used by children or persons not familiar with the operating instructions.
- Keep pets away from the washing machine.



Read these instructions and the separate installation instructions before operating the washing machine.

Programmes

Detailed overview of programmes → page 7.
Temperature and spin speed can be selected individually, depending on the selected programme and programme progress.

Βαμβακερά (Cottons)	
+ SpeedPerfect	
+ EcoPerfect	Hard-wearing fabrics
+ Πρόπλυση (+ Prewash)	
+ λιγότερο σιδέρωμα (Easy-iron)	
Συνθετικά (Easy-Care)	
+ SpeedPerfect	Easy-care fabrics
+ EcoPerfect	
+ Πρόπλυση (+ Prewash)	
Ανάμεικτα (Mix)	Different types of laundry
Μεταξωτά (Delicates/Silk)	Delicate washable fabrics
Μάλλινα (Wool)	Hand/machine-washable wool
Γρήγορο 15' (SuperQuick 15')	Short programme
Ξέβγαλμα/Στύψιμο (Rinse/Spin)	Hand-wash laundry, Έξτρα ξέβγ. (Rinse plus) activated; if only using the spin cycle, deactivate the button
Αντλση (Drain)	Drain rinsing water for ---- (without final spin)

Preparation

Correct installation according to the separate Installation instructions.



Checking the machine

- Never use a damaged machine.
- Inform the after-sales service.



Connecting the mains plug

Make sure your hands are dry. Take hold of the plug only.



Turning the tap on

- Compartment II:** Detergent for the main wash, water softener, bleach, stain remover
- Compartment** ⌘: Fabric softener, starch
- Compartment I:** Detergent for pre-wash

Display panel/
options buttons

Start/
Pause

Additional
function

Status
indi-
cators

Program

88:88

⌚

⌚

⌚

Έναρξη

Παύση

Έξτρα

ξέβγ.

Τέλος

Στύψιμο

Ξέβγαλμα

Πλύση

Έτοιμο

Συνθετικά

+ SpeedPerfect

+ EcoPerfect

+ Πρόπλυση

Ανάμεικτα

Μεταξωτά

Μάλλινα

Γρήγορο

---- - 1000*

⌚

Select the spin speed (* depending on the model) or ---- no final spin, laundry soaks in the last rinsing water)

End

Spin

Rinse

Wash

Finish

Cold - 90 °C

⌚

Selecting the temperature

1 - 24h

⌚

Programme end after

🔒

Childproof lock → page 5

Before washing for the first time
Wash once without any laundry → page 9.

Sorting and loading laundry

Follow the manufacturer's care information.
According to the information on the care labels.
According to type, colour, soiling and temperature.
Do not exceed the maximum load → page 7.

Observe the important information → page 6.

Insert large and small items of laundry.

Close the washing machine door. Take care not to trap items of laundry between the washing machine door and the rubber seal.

Add detergent and care products

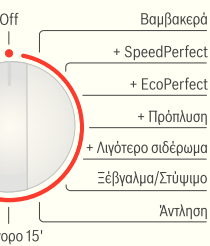
Measure accordingly:


Amount of laundry, soiling, water hardness (ask your water supply company) and manufacturer's instructions.
Put liquid detergent into the appropriate dispenser and place in the drum.

i Dilute thick fabric softener and fabric conditioner with water.
This prevents blockages.

Setting** and adjusting programmes

Programme selector



i **If the  symbol flashes in the display panel, the childproof lock is active → Deactivate, page 5.

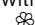
Additional function and options buttons
→ Individual settings, page 5.

i If the buttons are held for longer, the appliance automatically runs through the setting options.

Select  **Έναρξη/Παύση (Start/Pause)**

i Programme selector for switching the machine on and off and for selecting the programme.
Can be turned in either direction.

Washing

Detergent drawer with compartments I, II, 

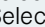
Drum

Control panel

Washing machine door

Service flap

Removing the washing

Open the washing machine door and remove the washing.
If ---- (without final spin) is active: Turn the programme selector to **Αντληση (Drain)** or select the spin speed. Select  **Έναρξη/Παύση (Start/Pause)**.

i – Remove any foreign objects - risk of rusting.
– Leave the washing machine door and detergent drawer open so that any residual water can evaporate.

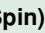
Turning the tap off

Not required for HydroSafe models → Refer to installation instructions

Switching off


Turn the programme selector to **Off**.

End of programme when ...

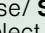

... the status indicator  (**Spin**) flashes and **End** appears in the display panel.

Interrupting the programme

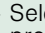
Programmes at high temperatures:

- Cool washing: Select **Ξέβγαλμα/Στύψιμο (Rinse/Spin)**.
- Select  **Έναρξη/Παύση (Start/Pause)**.

Programmes at lower temperatures:

- **Ξέβγαλμα/Στύψιμο (Rinse/ Spin)** (deactivate  **Έξτρα Ξέβγ (Rinse plus)**) or select **Αντληση (Drain)**.
- Select  **Έναρξη/Παύση (Start/Pause)**.

Changing the programme, if ...

- ... you have selected the wrong programme by mistake:
 - Reselect the programme.
 - Select  **Έναρξη/Παύση (Start/Pause)**. The new programme starts from the beginning.

Individual settings


- Options buttons**

The spin speed and temperature can be changed before and during the selected programme runs. The effects depend on the programme progress.
- ⌚ (Spin speed / without final spin)**

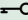
You can change the displayed spin speed. The maximum selectable spin speed depends on the model and on which programme is currently selected.
- 🌡️ (Temperature)**

You can change the displayed washing temperature. The maximum washing temperature that can be selected depends on the programme that has been set.
- ⏸️ (Finished in)**

When you select the programme, the relevant programme duration is displayed. You can delay the start of the programme before it begins. The "finished in" time can be set in increments of one hour up to a maximum of 24 hours. Press the ⏸️ (**Finished in**) button repeatedly until the required number of hours is displayed (h = hour).
Select ⏸️ **Έναρξη/Παύση (Start/Pause)**.
- Additional function** → and overview of programmes, see page 7

 **Έξτρα Ξέβγ (Rinse plus)**

Additional rinse cycle. For areas with very soft water or for further enhancing the washing result.
- Childproof lock**

 **Childproof lock/ Appliance lock**

You can lock the washing machine to prevent the functions you have set from being changed inadvertently.

ON/OFF: Press and hold the ⏸️ Έναρξη/Παύση (Start/Pause) button for approx. 5 seconds after the start/end of the programme.

Note: The childproof lock can remain activated until you wish to start the next programme, even after switching off the machine.

Then you can deactivate the childproof lock before the start of the programme and activate it again as necessary once the programme has started.
- ⏸️ Έναρξη/Παύση (Start/Pause)**

For starting or interrupting the programme.





Important information



- Protecting the laundry and the machine**
- When determining the dosage of all washing powders, additives and cleaning agents, you must follow the manufacturer's instructions.
 - Empty pockets.
 - Look out for metal items (paperclips, etc.).
 - Wash delicates in a laundry bag (tights, curtains, underwired bras).
 - Fasten zips, do up any buttons.
 - Brush sand out of pockets and collars.
 - Remove curtain fittings or place in the laundry bag.

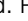


- Laundry with varying degrees of soiling**
- | | | |
|-------|---|--|
| | | Wash new items of clothing separately. |
| light |  | Do not pre-wash.
If required, choose the + SpeedPerfect programme. |
| | | Pre-treat any stains as necessary. |
| heavy |  | Do not load as much laundry. Select the program with prewash. |



- Soaking** Load laundry of the same colour
- Pour soaking agent/detergent into compartment **II** in accordance with the manufacturer's instructions. Turn the programme selector to **Cottons 30 °C** and select ⏸️ **Έναρξη/Παύση (Start/Pause)**. After approx. 10 minutes, press ⏸️ Έναρξη/Παύση (Start/Pause) to pause the programme. Once the required soaking time has elapsed, select ⏸️ **Έναρξη/Παύση (Start/Pause)** again to continue the programme, or select a different programme.



- Starching** Laundry must not be treated with fabric softener
- Starching is possible in all wash programmes if liquid starch is used. Pour the starch in accordance with the manufacturer's instructions into fabric softener compartment  (rinse first if necessary).



- Dyeing / Bleaching**
- Dye should only be used in normal household quantities. Salt may damage stainless steel. Always follow the dye manufacturer's instructions! Do **not** use the washing machine for bleaching clothes!

Overview of programmes

→ Refer to the table of consumption values on page 8 and notes on page 6.

Programmes	°C	max.	Type of laundry	Additional functions; information
Βαμβακερά (Cottons)	ζαζζζζ - 90 °C			Εξίτρα ξέβγ (Rinse plus)
+ SpeedPerfect *	ζαζζζζ - 90 °C			Εξίτρα ξέβγ (Rinse plus); shorter programme
+ EcoPerfect	ζαζζζζ - 90 °C	7 kg/	Hard-wearing fabrics, heat-resistant fabrics made of cotton or linen	Εξίτρα ξέβγ (Rinse plus); energy-saving programme
+ Πρόβλυση (+ Prewash)	ζαζζζζ - 90 °C	4 kg*		Εξίτρα ξέβγ (Rinse plus); prewash at 30 °C
+ Λινότερο οιδόρουμα (Easy-iron)	ζαζζζζ - 90 °C			Εξίτρα ξέβγ (Rinse plus); special spin sequence with subsequent fluffing.
Συνθετικά (Easy-Care)	ζαζζζζ - 60 °C			Εξίτρα ξέβγ (Rinse plus)
+ SpeedPerfect	ζαζζζζ - 60 °C		Easy-care fabrics made of cotton, linen, synthetic fibres or blended fabrics	Εξίτρα ξέβγ (Rinse plus); shorter programme
+ EcoPerfect	ζαζζζζ - 60 °C	3 kg		Εξίτρα ξέβγ (Rinse plus); energy-saving programme
+ Πρόβλυση (+ Prewash)	ζαζζζζ - 60 °C			Εξίτρα ξέβγ (Rinse plus); prewash at 30 °C
Ανόμεικτα (Mix)	ζαζζζζ - 40 °C		Fabrics made of cotton or easy-care fabrics	Εξίτρα ξέβγ (Rinse plus); different types of laundry can be washed together
Μεταξωτά (Delicates/Silk)	ζαζζζζ - 40 °C		For delicate, washable fabrics, e.g. made of silk, satin, synthetic fibres or blended fabrics (e.g. curtains)	Εξίτρα ξέβγ (Rinse plus); no spin between rinse cycles
Μάλλινα (Wool)	ζαζζζζ - 40 °C	2 kg	Hand- or machine-washable fabrics made of wool or containing wool	Particularly gentle wash programme to prevent shrinkage of laundry. Longer programme breaks (fabrics rest in the detergent solution)
Γρήγορο 15' (SuperQuick 15')	ζαζζζζ - 40 °C		Easy-care fabrics made of cotton, linen, synthetic fibres or blended fabrics	Short programme, approx. 15 minutes, suitable for lightly soiled laundry
Additional programmes				
Ξεβγάλμα/Στύψιμο (Rinse/Spin), Αντλση (Drain)				

* reduced load

i As a short programme, Ανόμεικτα (Mix), with the maximum spin speed is ideal.

Programmes without pre-wash - add detergent to compartment II, programmes with pre-wash - distribute the detergent between compartments I and II.

9303 / 9000883667

Robert Bosch Hausgeräte GmbH
Carl-Wery-Str. 34
81739 München / Germany

Safety instructions

- Read the instruction manual and installation instructions and all other information enclosed with the washing machine and act accordingly.
- Retain the documents for subsequent use.

Risk of electric shock

- Never pull the cable to disconnect the mains plug.
- Never insert/disconnect the mains plug with damp hands.

Danger to life

For worn-out appliances:

- Disconnect the mains plug.
- Sever the mains cable and discard along with the plug.
- Destroy the lock on the washing machine door. This will prevent children from locking themselves in and risking their lives.

Danger of suffocation

- Keep packaging, film and packaging parts out of the reach of children.

Risk of poisoning

- Keep detergents and care products out of the reach of children.

Risk of explosion

- Items of laundry pretreated with cleaning agents containing solvents, e.g. stain remover/cleaning solvent may cause an explosion after being loaded into the washing machine.
- Rinse items of laundry thoroughly by hand beforehand.

Risk of injury

- The washing machine door can become very hot.
- Be careful when draining hot detergent solution.
- Do not climb onto the washing machine.
- Do not lean on the open washing machine door.
- Do not reach into the drum if it is still rotating.
- Be careful when opening the detergent drawer while the machine is in operation.

Consumption values <small>depending on model</small>				
Programme	Load	Electricity***	Water***	Programme duration***
Βαμβακερά (Cottons) 20 °C	7 kg	0,32 kWh	68 l	2 ½ h
Βαμβακερά (Cottons) 30 °C	7 kg	0,56 kWh	68 l	2 ½ h
Βαμβακερά (Cottons) 40 °C*	7 kg	0,91 kWh	68 l	2 ½ h
Βαμβακερά (Cottons) 60 °C	7 kg	1,25 kWh	68 l	2 ¾ h
Βαμβακερά (Cottons) 90 °C	7 kg	2,16 kWh	74 l	2 ¾ h
Συνθετικά (Easy-Care) 40 °C*	3 kg	0,55 kWh	54 l	1 ¾ h
Ανάμεικτα (Mix) 40 °C	3 kg	0,45 kWh	35 l	1 ¼ h
Μεταξωτά (Delicates/Silk) 30 °C	2 kg	0,24 kWh	35 l	¾ h
Μάλλινα (Wool) 30 °C	2 kg	0,22 kWh	47 l	¾ h
* Programme setting for testing in accordance with valid standard EN60456. Note on comparative tests: For testing the test programmes, wash the specified load using the maximum spin speed.				
Programme	Additional function	Load	Annual energy consumption	Annual water consumption
Βαμβακερά (Cottons) + EcoPerfect 40/60 °C		3,5/7 kg	165 kWh	10686 l
** Programme setting for testing and energy labelling in accordance with EU directive 2010/30/EU with cold water (15 °C).				
*** The values deviate from the indicated values depending on water pressure, hardness, and inlet temperature, ambient temperature, type, amount and soiling of the laundry, detergent used, fluctuations in the power supply and selected additional functions.				

Care



- Risk of electric shock. Disconnect the mains plug.
- Risk of explosion. No solvents.



Before washing for the first time

Do not load any laundry into the machine. Turn on the tap.

Add the following to compartment **II**:

- approx. 1 litre water
- detergent (dosage according to the manufacturer's instructions for light soiling and the appropriate degree of water hardness)

Set the programme selector to **Συνθετικό (Easy-Care) 60 °C** and select **▷||| Έναρξη/Παύση (Start/Pause)**. At the end of the programme, turn the programme selector to **Off**.



Machine housing, control panel

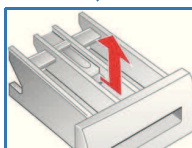
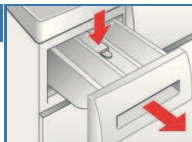
- Wipe with a soft, damp cloth.
- Do not use any abrasive cloths, scourers or cleaning agents (stainless steel cleaners).
- Remove detergent and cleaning agent residue immediately.
- Do not clean with a jet of water.



Cleaning the detergent drawer and housing...

... if it contains detergent or fabric softener residues.

1. Pull the drawer out, press down the insert and fully remove the drawer from the housing.
2. To remove the insert: press the insert upwards from below with your finger.
3. Clean the detergent dispenser tray and insert with water and a brush and dry it. Also remove any detergent or fabric softener residues in the housing.
4. Attach the insert and engage (connect the cylinder to the guide pin).
5. Push in the detergent drawer.



Leave the detergent drawer open so that any residual water can evaporate.



Washing drum and rubber seal

Wipe the inside of the rubber seal dry with a cloth. Leave the washing machine door open so that the drum can dry out. Rust stains - use chlorine-free cleaning agent, not steel wool.



Descaling

Ensure there is no laundry in the machine

Descal the appliance according to the descaler manufacturer's instructions. This should not be necessary if the correct dosage of detergent is used.

Information on the display panel depending on model

E3	Close the washing machine door properly; laundry may be caught.
E5	Open the tap completely, supply hose kinked or trapped; Clean the filter → <i>page 10</i> , Water pressure too low.
E6	Detergent solution pump blocked; Clean the detergent solution pump → <i>page 10</i> . Drainage hose/waste pipe blocked; Clean the drainage hose at the siphon → <i>page 10</i> .
E2	Motor fault. Call the after-sales service.

Maintenance



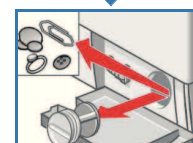
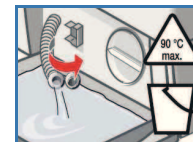
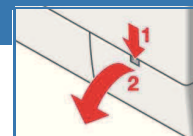
- Risk of scalding. Allow the detergent solution to cool down.
- Turn off the tap.



Detergent solution pump

Turn the programme selector to **Off** and disconnect the mains plug.

1. Open and remove the service flap.
2. **For models with a drainage hose:** Remove the drainage hose from the retainer and pull it from the housing. Remove the container. Remove the sealing cap, allow the detergent solution to flow out. Replace the sealing cap and place the drainage hose in the retainer.
- 2* **For models without a drainage hose:** Carefully unscrew the pump cover until the detergent solution begins to flow out. When the service flap is half full, close the pump cover and empty the service flap. Repeat the above steps until all the detergent solution has completely drained out.
3. Carefully unscrew the pump cover (residual water).
4. Clean the interior, pump cover thread and pump housing (the impeller in the detergent solution pump must rotate).
5. Replace the pump cover and screw it tightly.
6. Place the service flap back on and close.



To prevent unused detergent from flowing straight into the drain during the next wash: Pour 1 litre of water into compartment **II** and start the **Άντληση (Drain)** programme.



Drainage hose at the siphon

Turn the programme selector to **Off** and disconnect the mains plug.

1. Loosen the hose clamp, carefully remove the drainage hose (residual water).
2. Clean the drainage hose and siphon connecting piece.
3. Reattach the drainage hose and secure the connection with the hose clamp.



Filter in the water supply

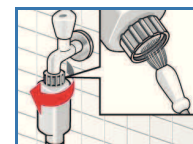


Risk of electric shock

Do not immerse the HydroSafe safety device in water (contains an electric valve).

Reduce the water pressure in the supply hose:

1. Turn off the tap.
2. Select any programme (except **Ξέβγαλμα/Στύψιμο (Rinse/Spin)** // **Άντληση (Drain)**).
3. Select **▷||| (Start/Pause)**. Let the programme run for approximately 40 seconds.
4. Turn the programme selector to **Off**. Disconnect the mains plug. Clean the filter:

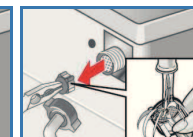
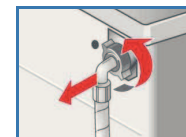


1. Depending on model:
Disconnect the hose from the tap.
Clean the filter using a small brush.


and/or for Standard and HydroSafe models:

Remove the hose on the rear of the appliance,
Remove the filter with pliers and clean.

2. Connect the hose and check for leaks.



What to do if ...

Water is leaking out.	<ul style="list-style-type: none"> – Attach/replace the drainage hose correctly. – Tighten the screw connection of the supply hose.
No water supply. Detergent not dispensed.	<ul style="list-style-type: none"> – Εναρξη/Παύση (Start/Pause) not selected? – Tap not turned on? – Filter blocked? Clean the filter → <i>page 10</i>. – Supply hose kinked or trapped?
Washing machine door cannot be opened.	<ul style="list-style-type: none"> – Safety function active. Wait approx. 2 minutes. – ---- (without final spin) selected? → <i>page 3, 4</i>.
Programme does not start.	<ul style="list-style-type: none"> – Εναρξη/Παύση (Start/Pause) or ΤΕΛΟΣ (Finished in) selected? – Washing machine door closed? – Childproof lock active? Deactivate → <i>page 5</i>.
Detergent solution is not drained.	<ul style="list-style-type: none"> – ---- (without final spin) selected? → <i>page 3, 4</i>. – Clean the detergent solution pump → <i>page 10</i>. – Clean the waste pipe and/or drainage hose.
Water not visible in the drum.	<ul style="list-style-type: none"> – Not a fault - water below the visible area.
Unsatisfactory spin result. Laundry wet/too damp.	<ul style="list-style-type: none"> – Not a fault - the unbalanced-load detection system has cancelled the spin cycle because of uneven distribution of the laundry. Distribute small and large items of laundry evenly inside the drum. – Programme + Λιγότερο σιδέρωμα (Easy-iron) selected? → <i>page 7</i>. – Speed selected too low? → <i>page 5</i>.
The programme duration changes during the wash cycle.	<ul style="list-style-type: none"> – Not a fault – the programme sequence is optimised for the particular wash process. This may result in changes to the programme duration in the display field.
Spin cycle performed several times.	<ul style="list-style-type: none"> – Not a fault - unbalanced load detection system adjusts the imbalance.
Residual water in the compartment for care products.	<ul style="list-style-type: none"> – Not a fault - the action of the care product is not affected. – Clean the insert if necessary → <i>page 9</i>.
Odour formation in the washing machine.	<ul style="list-style-type: none"> – Run programme Βαμβακερά (Cottons) 90 °C without laundry. Use standard detergent.
 (Wash) display lamp flashes. Foam may be coming out of the detergent drawer.	<ul style="list-style-type: none"> – Too much detergent used? Mix 1 tablespoon of fabric softener with ½ litre of water and pour into dispenser II (<i>not for outdoor and down-filled textiles!</i>). – Reduce the detergent dosage for the next wash cycle.
Intense noise formation, vibrations and “wandering” during the spin cycle.	<ul style="list-style-type: none"> – Are the appliance feet fixed? Secure the appliance feet → <i>Installation instructions</i>. – Transportation safety devices removed? Remove the transportation safety devices → <i>Installation instructions</i>.
Noises during spin and drain cycles.	<ul style="list-style-type: none"> – Clean detergent-solution pump → <i>page 10</i>.
Display panel/indicator lamps do not function during operation.	<ul style="list-style-type: none"> – Power cut? – Fuses triggered? Reset/change the fuses. – If the fault occurs repeatedly, call the after-sales service.
Programme sequence longer than usual.	<ul style="list-style-type: none"> – Not a fault - unbalanced load detection system adjusts imbalance by repeatedly distributing the laundry. – Not a fault - foam detection system active - adds an additional rinse cycle.
Detergent residues on the laundry.	<ul style="list-style-type: none"> – Occasionally, phosphate-free detergents contain water-insoluble residues. – Select Ξέβγαλμα/Στύψιμο (Rinse/Spin) or brush the laundry after washing.

If you cannot correct a fault yourself (switching on/off) or a repair is required:

- Turn the programme selector to **Off** and remove the mains plug from the socket.
- Turn off the water supply and call the after-sales service → *Installation instructions*.



Washing machine

en Instruction manual