

Your new dryer

Congratulations - You have chosen a modern, high-quality Bosch domestic appliance. The condensation dryer is distinguished by its economical energy consumption.

Every dryer which leaves our factory is carefully checked to ensure that it functions correctly and is in perfect condition. Should you have any questions, our after-sales service will be pleased to help.

Disposal in an environmentally-responsible manner

This appliance is labelled in accordance with the European guideline 2002/96/EC on waste electrical and electronic equipment - WEEE. The guideline provides an EU-wide framework for the return and recycling of old appliances.

For further information about our products, accessories, spare parts and services, please visit: www.bosch-home.com

Observe the safety instructions on page 13.

Read these instructions and the separate **Energy-saving mode** instructions before operating the dryer.

Contents

■ Preparation	Page 2
■ Control panel	2
■ Drying	3/4
■ Display panel and settings	5
■ Notes on laundry	6
■ Overview of programmes	7
■ Care and cleaning	8
■ Installation	9
■ Frost protection / Transport	9
■ Optional accessories	10
■ Technical data	10
■ Consumption rates	10
■ After-sales service	11
■ What to do if	11/12
■ Safety instructions.	13

Intended use

- exclusively for domestic use,
- only for drying fabrics which have been washed using water.

Do not leave children unsupervised near the dryer. Keep pets away from the dryer. The dryer may be operated by children from 8 years of age, by persons who have limited physical, sensory or mental abilities and by persons who have inadequate experience or knowledge, provided they are supervised or have been instructed by a responsible person.

Preparation

Installation → page 9.

Never start the dryer if it is damaged! Inform your after-sales service!

Inspect the dryer

Make sure your hands are dry. Only grasp the plug by the plug body.

Connect the mains plug

Sort the laundry

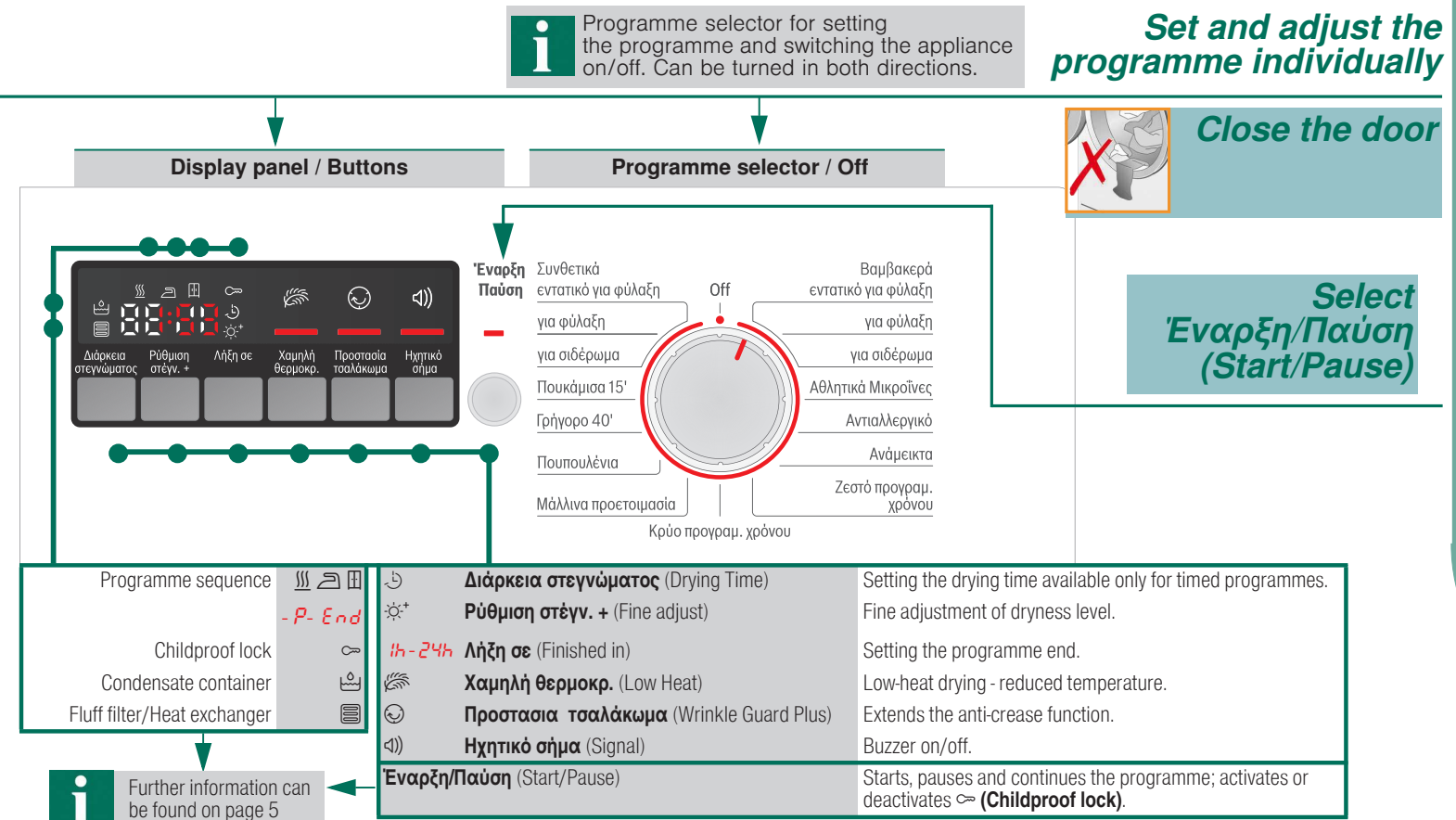
Remove all items from pockets, especially cigarette lighters. The drum must be empty prior to loading.

See also separate instructions for "Woolens basket" (depending on model).

Set and adjust the programme individually

Close the door

Select Έναρξη/Παύση (Start/Pause)



Further information can be found on page 5

Drying

Empty the condensate container

- Remove the container, holding it level.
 - Pour out the condensate.
 - Push the container back in until it clicks into place.
- If **(Condensate container)** flashes in the display panel → *What to do if...*, page 11.

Clean fluff filter

Do not operate the dryer without a fluff filter or with a defective fluff filter. A clean fluff filter minimises energy consumption.

- Clean the fluff filter **after** each drying cycle.
- Open the door. Remove any fluff from the door/around the door and pull out the fluff filter.
 - Remove the fluff from the shaft of the fluff filter.
 - Open the fluff filter and remove the fluff (sweep your hand over the fluff filter). If the fluff filter is very dirty or blocked, rinse with warm water and dry thoroughly.
 - Close and reinsert the fluff filter.

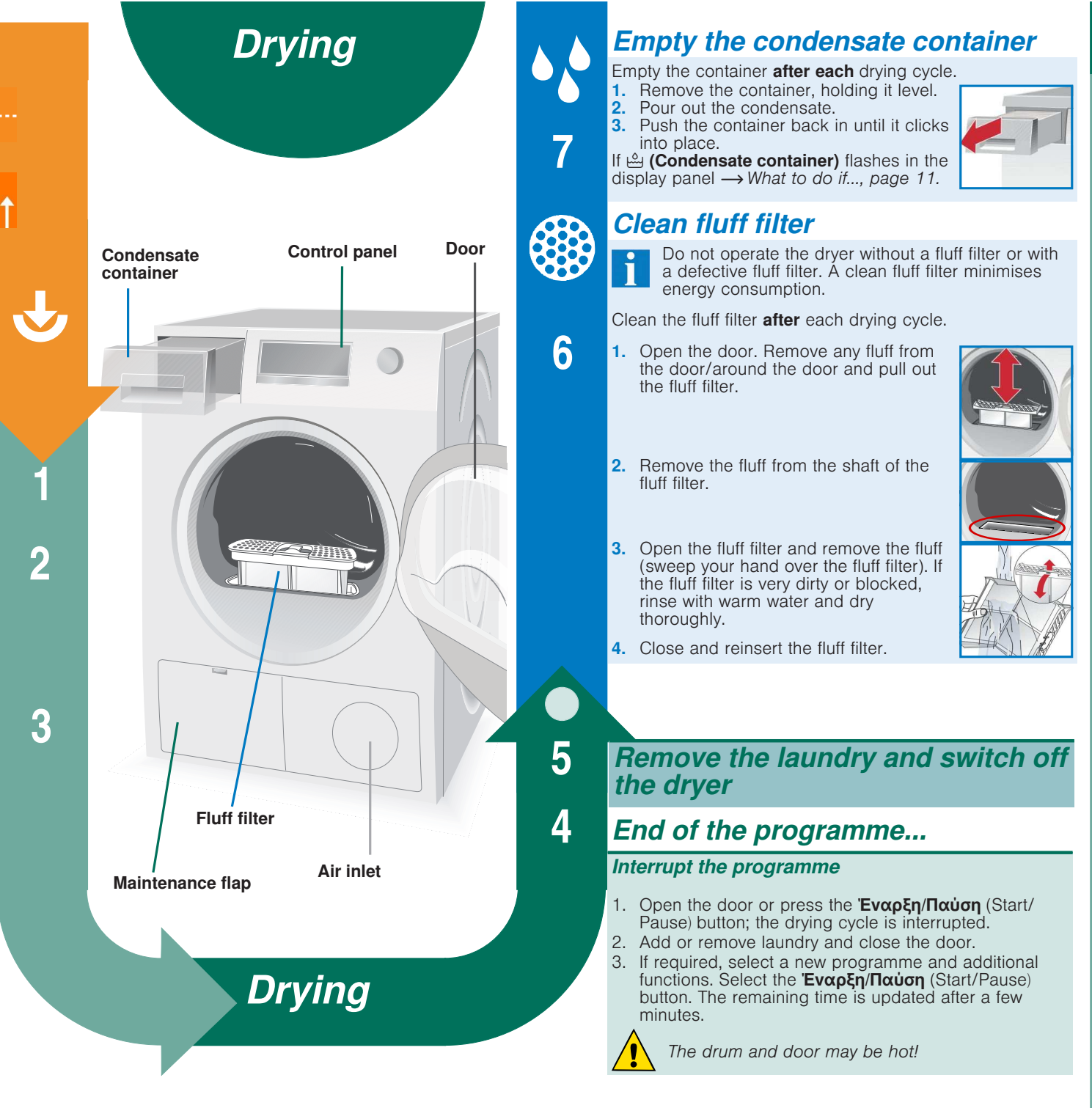
Remove the laundry and switch off the dryer

End of the programme...

Interrupt the programme

- Open the door or press the **Έναρξη/Παύση** (Start/Pause) button; the drying cycle is interrupted.
- Add or remove laundry and close the door.
- If required, select a new programme and additional functions. Select the **Έναρξη/Παύση** (Start/Pause) button. The remaining time is updated after a few minutes.

The drum and door may be hot!



Display panel and settings

Display panel (status indicators)

(Fluff filter/ Heat exchanger) Clean the fluff filter → page 4/11 or clean the heat exchanger → page 8.

(Condensate container) Empty the condensate container → page 4/11.

(Programme sequence) These indicators show the programme progress in the next steps of the drying cycle:

- Drying;
- Iron Dry;
- Cupboard Dry;
- P- Programme pause → if required;
- End Programme end.

(Childproof lock) You can lock the dryer to prevent the functions you have set from being changed inadvertently. To activate/deactivate **(Childproof lock)** start the programme or set the **Λήξη σε** (Finished in) option and then press and hold the **Έναρξη/Παύση** (Start/Pause) button for 5 seconds until a long acoustic signal is heard. The option activated/deactivated → **(Childproof lock)**

[h:min] (Remaining time) When a programme is selected, the anticipated drying time (remaining time) for the recommended load is displayed. While drying, the moisture sensors detect the actual load and correct the programme length. This is shown by jumps in the remaining time in the display panel.

Settings (indicators lights and buttons)

Selected option activated/deactivated → indicator light on/off. See the separate **Energy-saving mode** instructions.

Διάρκεια στεγνώματος (Drying Time) Drying time, available only for timed programmes, can be selected from min. 0:20 h to max. 3:00 h, in 10-minute steps.

Ρύθμιση στεγν. + (Fine adjust) The dryness levels (e.g. Cupboard Dry) can be increased in three levels. The laundry is made drier. Default = 0. Selectable values: 0, 1, 2, 3. After setting the level of the fine adjustment for a programme, it is also retained for other programmes, until **Ρύθμιση στεγν. +** (Fine adjust) is changed again.

Λήξη σε (Finished in) The time when the programme has to end can be set by selecting the **Λήξη σε** (Finished in) time. The **Λήξη σε** (Finished in) time can be selected in one-hour steps, up to a maximum of 24 hours for a while. The **Λήξη σε** (Finished in) button repeatedly until the required number of hours is displayed. Then press the **Έναρξη/Παύση** (Start/Pause) button to activate the **Λήξη σε** (Finished in) option. The programme ends after the selected number of hours. Several minutes after activating **Λήξη σε** (Finished in) option the display switches off to save energy. To switch it on select any button, close/open the door or turn the programme selector.

Χαμηλή θερμοκρ. (Low Heat) Reduced temperature for delicate fabrics, e.g. polyacrylic, polyamide or elastane, with a longer drying time.

Προστασία τσαλάκωμα (Wrinkle Guard Plus) After the programme finishes, the drum moves at regular intervals to prevent creases. Laundry remains loose and fluffy. The standard setting for each programme is 60 min. Automatic anti-crease function can be extended by up to 60 min.

Ηχητικό σήμα (Signal) For switching the buzzer on and off. **Ηχητικό σήμα** (Signal) indicates program end if it is activated. Other sounds are not influenced by this option.

Notes on laundry ...

Labelling of fabrics

- Follow the manufacturer's care instructions.**
- Suitable for tumble drying.
 - Dry at normal temperature.
 - Dry at low temperature → in addition, select **Χαμηλή θερμοκρ.** (Low Heat).
 - Do not tumble dry.

Do not tumble dry the following fabrics:

- Non-breathable fabrics (e.g. rubber-coated).
- Delicate materials (silk, curtains made from synthetic material) → these may crease.
- Oil-stained laundry.

Drying tips

- To ensure a consistent drying result, sort the laundry by fabric type and drying programme.
- Always dry very small fabrics (e.g. baby socks) together with large items of laundry (e.g. towels).
- Close zips, hooks and eyelets, and button up covers. Tie cloth belts, apron strings, etc. together or use a laundry bag.
- Do not over-dry easy-care laundry → risk of creasing. Allow laundry to finish drying in the air.
- Do not dry woolens in the dryer. They may, however, be refreshed in the dryer → page 7, **Μάλλινα προετοιμασία** (Wool Finish) programme (depending on model).
- Do not iron laundry immediately after drying; fold items up and leave for a while → residual moisture will then be distributed evenly.
- Knitted fabrics (e.g. T-shirts, jerseys) often shrink slightly the first time they are tumble-dried. → Do not use the **εντατικό για φύλαξη** (Cupboard Dry Plus) programme.
- Starched laundry is not always suitable for dryers → starch leaves behind a coating that reduces the drying effect.
- When washing laundry that is to be tumble dried afterwards, use the correct amount of fabric softener as specified in the manufacturer's instructions.
- For pre-dried, multi-layered fabrics or small, individual items of laundry, use the timed programme. Also suitable for subsequent drying.

Environmental protection / Energy-saving tips

- Before drying, spin the laundry in the washing machine → higher spin speeds minimise the drying time and reduce energy consumption.
- Use the maximum recommended capacity, but do not exceed it → *Programme overview, page 7.*
- Make sure the room is well ventilated during drying.
- Clean the fluff filter after every drying cycle → *Clean the fluff filter, page 4/11.*
- Do not cover or seal the air inlet on the dryer.

Programme overview	
Sort the laundry according to type of textile and fabric. Fabrics must be suitable for tumble drying. After drying, laundry is to be ...	
PROGRAMMES	TEXTILE TYPE AND INFORMATION
*Βαμβάκερα (Cottons)	max. 8 kg Hard-wearing fabrics, boil-proof fabrics made of cotton or linen.
*Συνθετικά (Synthetics)	max. 8.5 kg Non-iron laundry made of synthetic fibres and mixed fabric, easy-care cotton.
via σιδέρωμα (Iron Dry)	via σιδέρωμα (Iron Dry) The condition of the laundry means it is suitable for ironing (iron clothes in order to avoid creases).
via φύλαξη (Cupboard Dry)	via φύλαξη (Cupboard Dry) Single-layered laundry.
εντατικό για φύλαξη (Cupboard Dry Plus)	εντατικό για φύλαξη (Cupboard Dry Plus) Laundry with thick, multi-layered parts.
Αθλητικά Μικροϊνέ (Sportswear)	max. 1.5 kg Fabrics with membrane coating, water-repellent fabrics, functional clothing, fleece fabrics (dry jackets/trousers with renewable internal lining separately).
Αντιαλλεργικό (Allergy Plus)	max. 6 kg Cotton fabrics for drying in higher temperatures to keep them more hygienic.
Ανάμεικτα (Mix)	max. 3 kg Mixed items of laundry made of cotton and synthetics (Mix).
Ζεστό προγραμ. χρόνου (Timed program warm)	max. 3 kg Pre-dried, multi-layered, sensitive fabrics made of acrylic fibres, or separate small items of laundry. Also for subsequent drying.
Κρύο προγραμ. χρόνου (Timed program cold)	max. 3 kg All types of fabrics. For freshening up or airing of items of laundry that have been worn for a short period of time.
Πουκάμισα 15' (Shirts 15')	max. 1 kg For optimal drying result dry a maximum of 5 business shirts together. After drying, iron clothes or hang them out and leave for a while. The remaining moisture will be distributed evenly.
Γρήγορο 40' (Super Quick 40')	max. 2 kg Laundry made of synthetic fibres, cotton or blended fabrics (for example) that needs to be dried quickly.
Πουπουλένια (Down)	max. 1.5 kg The values may differ from the those specified depending on the type of fabric, mixture of laundry to be dried, residual moisture in the fabric and loading capacity.
Μάλλινα προετοιμασία (Wool Finish)	max. 3 kg Woolen fabrics suitable for washers. Fabrics become fluffier but not dry. Remove fabrics once the programme has ended and allow to dry.

*Dryness levels can be selected individually → Cupboard Dry Plus, Cupboard Dry and Iron Dry (depending on the model). Degree of dryness can be finely adjusted; multi-layered textiles require a longer drying time than single-layered items or clothing. Recommendation: Dry separately.

Programme overview	
Sort the laundry according to type of textile and fabric. Fabrics must be suitable for tumble drying. After drying, laundry is to be ...	
PROGRAMMES	TEXTILE TYPE AND INFORMATION
*Βαμβάκερα (Cottons)	max. 8 kg Hard-wearing fabrics, boil-proof fabrics made of cotton or linen.
*Συνθετικά (Synthetics)	max. 8.5 kg Non-iron laundry made of synthetic fibres and mixed fabric, easy-care cotton.
via σιδέρωμα (Iron Dry)	via σιδέρωμα (Iron Dry) The condition of the laundry means it is suitable for ironing (iron clothes in order to avoid creases).
via φύλαξη (Cupboard Dry)	via φύλαξη (Cupboard Dry) Single-layered laundry.
εντατικό για φύλαξη (Cupboard Dry Plus)	εντατικό για φύλαξη (Cupboard Dry Plus) Laundry with thick, multi-layered parts.
Αθλητικά Μικροϊνέ (Sportswear)	max. 1.5 kg Fabrics with membrane coating, water-repellent fabrics, functional clothing, fleece fabrics (dry jackets/trousers with renewable internal lining separately).
Αντιαλλεργικό (Allergy Plus)	max. 6 kg Cotton fabrics for drying in higher temperatures to keep them more hygienic.
Ανάμεικτα (Mix)	max. 3 kg Mixed items of laundry made of cotton and synthetics (Mix).
Ζεστό προγραμ. χρόνου (Timed program warm)	max. 3 kg Pre-dried, multi-layered, sensitive fabrics made of acrylic fibres, or separate small items of laundry. Also for subsequent drying.
Κρύο προγραμ. χρόνου (Timed program cold)	max. 3 kg All types of fabrics. For freshening up or airing of items of laundry that have been worn for a short period of time.
Πουκάμισα 15' (Shirts 15')	max. 1 kg For optimal drying result dry a maximum of 5 business shirts together. After drying, iron clothes or hang them out and leave for a while. The remaining moisture will be distributed evenly.
Γρήγορο 40' (Super Quick 40')	max. 2 kg Laundry made of synthetic fibres, cotton or blended fabrics (for example) that needs to be dried quickly.
Πουπουλένια (Down)	max. 1.5 kg The values may differ from the those specified depending on the type of fabric, mixture of laundry to be dried, residual moisture in the fabric and loading capacity.
Μάλλινα προετοιμασία (Wool Finish)	max. 3 kg Woolen fabrics suitable for washers. Fabrics become fluffier but not dry. Remove fabrics once the programme has ended and allow to dry.

*Dryness levels can be selected individually → Cupboard Dry Plus, Cupboard Dry and Iron Dry (depending on the model). Degree of dryness can be finely adjusted; multi-layered textiles require a longer drying time than single-layered items or clothing. Recommendation: Dry separately.

Care and cleaning Only when switched off!

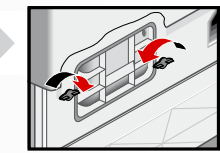
Dryer housing, control panel

- Wipe clean with a soft, damp cloth.
- Do not clean with a water jet.
- Remove detergent and cleaning agent residue immediately.
- During drying, water may occasionally accumulate between the window and the seal. This does not affect the proper operation of your dryer.

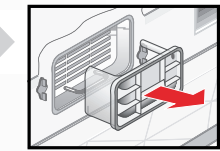
Heat exchanger

The heat exchanger requires cleaning once a month, however this varies depending on how frequently the dryer is used. Allow the dryer to cool down and place an absorbent cloth under the maintenance flap. Residual water may escape.

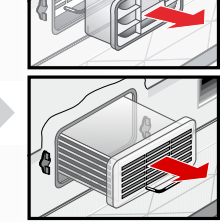
- Unlock the maintenance flap and open completely.
- Turn both locking levers towards each another.




- Pull out the cap.

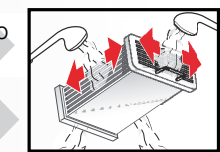


- Remove the heat exchanger.



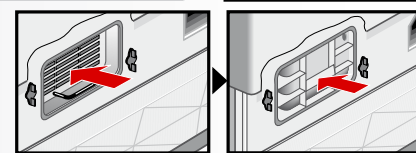
 Take care not to damage the heat exchanger. When cleaning, use water only. Do not use hard or sharp-edged objects.

- Rinse the heat exchanger and the cap on all sides with a jet of water to completely remove all of the fluff.



- Remove any fluff from the seals on the dryer and heat exchanger.

- Allow to drip dry fully.
- First insert the heat exchanger, then the cap.
- Turn back both locking levers and close the maintenance flap until it locks closed.




Moisture sensors

The dryer is equipped with stainless steel moisture sensors. Moisture sensors measure the moisture level of the laundry. After sustained, repeated operation, a fine layer of limescale may form on the moisture sensors.

- Open the door.
- Clean the moisture sensors with a damp sponge which has a rough surface.




 Do not use steel wool or abrasive agents!

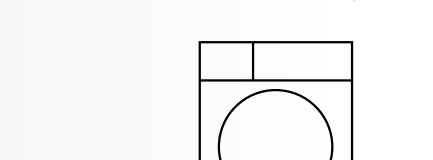
Installation

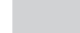
Scope of delivery: dryer, operating and installation instructions, basket for woollens (depending on the model).

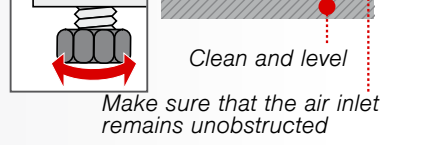
- Check the dryer for transport damage.
- The dryer is very heavy. Do not attempt to lift it on your own.
- Be careful to avoid sharp edges.
- Do not lift the dryer by protruding parts (e.g. the door) - risk of breakage.
- Do not set up in a room that is susceptible to frost.
- Freezing water may cause damage.
- If in doubt, have the appliance connected by a specialist.

- Setting up the dryer**
 - The mains plug must always be accessible.
 - Ensure that the appliance is placed on a clean, level and firm surface.
 - Do not obstruct the air inlet on the dryer.
 - Keep the area around the dryer clean.
 - Level the dryer using the threaded feet and a spirit level.
 - Never remove the threaded feet!

 Take all accessory parts out of the drum. The drum must be empty.



 Do not install the dryer behind a door or sliding door which could prevent or obstruct the dryer door from opening. This will prevent children from locking themselves in and risking their lives.

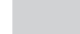


- For mains connection, see Safety instructions** → page 13.
 - Connect to an AC earthed socket. If in doubt have the socket checked by a specialist.
 - The mains voltage and the voltage shown on the rating plate (→ page 10) must be the same.
 - The connected load and necessary fuse protection are specified on the rating plate.

- Converting the installed load** Note the fuse protection of the socket (10/16 Amps).
 - Turn the programme selector to **Off**.
 - Press and hold the **Ρύθμιση στέγν. +** (Fine adjust) button.
 - Turn the programme selector to **Βαμβακερά** (Cottons) **εντατικό για φύλαξη** (Cupboard Dry Plus); wait until the recent setting appears in the display: **L0=10A** or **H1=16A**.
 - Press the **Ρύθμιση στέγν. +** (Fine adjust) button to change the settings.
 - Turn the programme selector to **Off**.

Frost protection / Transport  Do not operate the dryer if there is a risk of frost.

- Empty the condensate container → page 4/11.
- Select any programme using the programme selector.
- Press the **Έναρξη/Παύση** (Start/Pause) button → condensation is pumped into the container.
- Wait several minutes or until the dryer stops, and then empty the condensate container again.
- Turn the programme selector to **Off**.

 Do not use steel wool or abrasive agents!

Optional accessories (order from the after-sales service using the order number, depending on the model)

WMZ 20500 Platform
For easier loading and unloading. The basket contained in the drawer can be used to carry the laundry.

WTZ 20410 Washer-dryer stack connection set
The dryer can be placed on top of a suitable washing machine with the same width and depth to save space. The dryer **must** be fastened to the washing machine using this connection set. WTZ 11400: with pull-out worktop.

Technical data

Dimensions (DxWxH)	60 x 60 x 85 cm (height adjustable)
Weight	approx. 45 kg
Max. capacity	8 kg
Condensation container	4.2 l
Connection voltage	220-240 V
Connected load	2100-2800 W
Fuse protection	10 A / 16 A
Ambient temperature	5-35°C
Product number	Inside of door
Production number	Inside of door

The rating plate can be found on the back of the dryer.

- Drum interior light** (depending on model): The drum lights up after the door is opened and after the programme starts, and switches off automatically.

Consumption rates

(The value on the label is achieved at the maximum heat setting.)

Fabrics/programmes	Residual moisture in the fabrics after spinning		Drying time**		Energy consumption**	
	10 A	16 A	10 A	16 A	10 A	16 A
Cottons 8 kg						
Cupboard Dry*	1400 U/min (50%)	140 min	108 min	3.84 kWh	3.84 kWh	
	1000 U/min (60%)	158 min	126 min	4.61 kWh	4.61 kWh	
	800 U/min (70%)	176 min	144 min	5.31 kWh	5.31 kWh	
Iron Dry*						
	1400 U/min (50%)	116 min	86 min	2.30 kWh	2.30 kWh	
	1000 U/min (60%)	135 min	103 min	3.53 kWh	3.53 kWh	
	800 U/min (70%)	153 min	121 min	3.96 kWh	3.96 kWh	
Synthetics 3.5 kg						
Cupboard Dry*	800 U/min (40%)	52 min	46 min	1.42 kWh	1.42 kWh	
	600 U/min (50%)	65 min	56 min	1.74 kWh	1.74 kWh	

* Programme setting for testing in accordance with applicable standard EN61121.
** The values may differ from those specified, depending on the type of fabric, composition of laundry to be dried, residual moisture in the fabric and the amount of laundry being loaded.

Fabrics/programmes	Drying time	Annual energy consumption
Cottons 8 kg / 4 kg*		
Cupboard Dry***	97 min / cycle	561 kWh / year

*** Programme setting for testing and energy labelling in accordance with Directive 2010/30/EU.

After-sales service

If you cannot rectify the fault yourself (e.g. switching off/on) → *What to do if...*, page 11/12, please contact our after-sales service. We will always find an appropriate solution and avoid unnecessary visits by engineers.

The contact details of your local **after-sales service** can be found in the enclosed after-sales service directory.
 – **GB** 0844 8928979 (Calls from a BT landline will be charged at up to 3 pence per minute. A call set-up fee of up to 6 pence may apply.)
 – **IE** 01450 2655 (0.03 € per minute at peak. Off peak 0.0088 € per minute.)

Please provide the after-sales service the product number (E no.) and the production number (FD) of the appliance.


E-Nr. _____ FD _____

Product number Production number

Trust the expertise of the manufacturer. Contact us for assistance. In this way, you can rest assured that the repair will be carried out by trained service technicians using original spare parts.

You can find this information: inside the door / in the opened service flap* and on the rear of the appliance. *depending on the model*

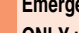

What to do if ...

-  Turn the programme selector to **Off** and remove the mains plug from the socket.
- The **Έναρξη/Παύση** (Start/Pause) indicator light does not light up. Mains plug plugged in? Programme selected? Check the socket fuse.
- The display panel light and indicator lights (depending on model) go out and the **Έναρξη/Παύση** (Start/Pause) indicator light flashes. Energy-saving mode is activated → see the separate *Energy-saving mode* instructions.
- The display panel switches off. The appliance goes into the sleep mode after activating **Λήξη σε** (Finished in) option → page 5.
- The **(Condensate container)** indicator light flashes. Empty the condensate container → page 4. Press the **Έναρξη/Παύση** (Start/Pause) button to reset the displayed indication and then press the **Έναρξη/Παύση** (Start/Pause) button again to restart the appliance if necessary. If featured, check the hose for condensation outlet.
- (Fluff filter/Heat exchanger)** indicator light flashes. Clean the fluff filter → page 4. Press the **Έναρξη/Παύση** (Start/Pause) button to reset the displayed indication and then press the **Έναρξη/Παύση** (Start/Pause) button again to restart the appliance if necessary. Clean the heat exchanger → page 8.
- Dryer does not start. **Έναρξη/Παύση** (Start/Pause) button selected? Door closed? Programme set?

What to do if ...

- Programme terminates shortly after starting. Ambient temperature greater than 5°C? Is the appliance loaded with the laundry? Load too small for selected programme?/Use timed programme → page 6/7. Loaded laundry dry?
- Water is leaking out. Make sure the dryer is level. Clean the heat exchanger seal.
- The door opens by itself. Push the door closed until you hear it engage.
- Creasing. Laundry load exceeded? Remove articles of clothing immediately after the end of the programme, hang up and pull into shape. Unsuitable programme selected → page 7.
- Drying result is not satisfactory (laundry feels too damp). Warm laundry feels damper than it really is. The selected programme does not suit the load. Use another drying programme or, in addition, select the timed programme → page 7. Use **Ρύθμιση στέγν. +** (Fine adjust) for the dryness levels → page 5. Fine layer of limescale on the humidity sensors → Clean the moisture sensors → page 8. Programme termination, e.g. tank full, mains power supply failure, door open or maximum drying time reached?
- Drying time too long. Clean the fluff filter under running water → page 4/11. Insufficient supply of air → Ensure that air can circulate. Air inlet possibly blocked → Clean inlet → page 9. Ambient temperature higher than 35°C → Ventilate the room.
- One or more indicator lights are flashing. Clean the fluff filter and heat exchanger → page 4,8/11. Check the installation conditions → page 9. Switch off, allow to cool, switch back on and restart the programme.
- Power failure. Remove the laundry from the dryer immediately and spread out. This allows the heat to dissipate. Be careful as the door, the drum and the laundry may be hot.

Safety instructions

-  **Emergency** ONLY use the dryer... Pull the appliance plug out of the socket immediately or disconnect the fuse. – in rooms inside the house. – to dry fabrics.
- The dryer must NEVER...** – be used for purposes other than those described above. – be modified in terms of its technology or properties.
- Hazards** – The dryer must not be used by children or persons who have not been instructed in its use. – Do not leave children unsupervised near the dryer. – Keep pets away from the dryer. – Remove all objects from pockets, and lighters in particular → **Risk of explosion.** – Do not lean or sit on the door → **Risk of tipping.** – Secure loose cables → **Risk of tripping.** – Do not operate a dryer if there is a risk of frost. – Connect the dryer to an AC earthed socket according to specifications, otherwise it cannot be guaranteed that the appliance is completely safe. – The cable cross-section must be sufficient. – Only use earth-leakage circuit breakers with the following symbol:  – The appliance plug and socket must be compatible. – Do not use multiple plugs/connectors and/or extension cables. – Do not touch or hold the appliance plug with wet hands → **Risk of electric shock.** – Never pull the appliance plug out of the socket by its cable. – Do not damage the mains lead → **Risk of electric shock.**
- Installation**
- Mains connection**
- Operation** – Only load the drum with laundry. Check the contents before you switch the dryer on. – Do not use the dryer if the laundry has been in contact with solvents, oil, wax, grease or paint (e.g. hair styling products, nail varnish remover, stain remover, cleaning solvent, etc.) → **Risk of fire/explosion.** – Dust (e.g. coal dust, flour) poses a danger: Do not use the dryer → **Risk of explosion.** – Do not turn off the dryer until the drying process ends, unless the laundry will be removed quickly and spread out, so that the heat can dissipate. – Do not put laundry containing foamed material/rubber in the dryer → elastic material may be destroyed and the dryer be damaged due to possible deformation of the foamed material. – When cleaning the fluff filter, make sure that no foreign material (down or filling material) gets into the air duct opening. If necessary, clean the drum beforehand with a vacuum cleaner. If foreign material should still get into the air duct → call the after-sales service → **Risk of fire/explosion.** – Light things, such as long hair, may be sucked into the air inlet of the dryer → **Risk of injury.** – Switch off the dryer once the programme has ended. – The water from condensation is not drinking water and may be contaminated with fluff.
- Defect** – Do not use the dryer if it is defective or if you suspect that it is. Repairs must only be carried out by the after-sales service. – Do not use the dryer if the mains cable is defective. To avoid danger, only have the defective mains cable replaced by the after-sales service.
- Spare parts** – For safety reasons, you must only use genuine spare parts and accessories.
- Disposal** – Pull out the appliance plug, then cut off the mains cable from the appliance. Dispose of the appliance at a municipal waste disposal site. – Packaging: Keep all packaging out of reach of babies and children → **Risk of suffocation.** – All materials are environmentally sound and can be reused. Dispose of them in an environmentally-responsible manner.



en Instruction manual

Your new dryer

Congratulations - You have chosen a modern, high-quality Bosch domestic appliance.
The condensation dryer is distinguished by its economical energy consumption.

Every dryer which leaves our factory is carefully checked to ensure that it functions correctly and is in perfect condition.
Should you have any questions, our after-sales service will be pleased to help.

Disposal in an environmentally-responsible manner

This appliance is labelled in accordance with the European guideline 2002/96/EC on waste electrical and electronic equipment - WEEE. The guideline provides an EU-wide framework for the return and recycling of old appliances.

For further information about our products, accessories, spare parts and services, please visit: www.bosch-home.com

Intended use

- exclusively for domestic use,
- only for drying fabrics which have been washed using water.



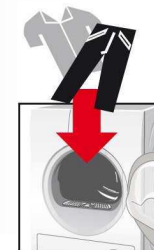
Do not leave children unsupervised near the dryer. Keep pets away from the dryer. The dryer may be operated by children from 8 years of age, by persons who have limited physical, sensory or mental abilities and by persons who have inadequate experience or knowledge, provided they are supervised or have been instructed by a responsible person.

Preparation

Installation → page 9.



Never start
Inform you



Observe the safety instructions on page 13.



Read these instructions and the separate **Energy-saving mode** instructions before operating the dryer.

Contents

Page

- Preparation 2
- Control panel 2
- Drying 3/4
- Display panel and settings 5
- Notes on laundry 6
- Overview of programmes 7
- Care and cleaning 8
- Installation 9
- Frost protection / Transport 9
- Optional accessories 10
- Technical data 10
- Consumption rates 10
- After-sales service 11
- What to do if 11/12
- Safety instructions. 13

Programmes / Fabrics

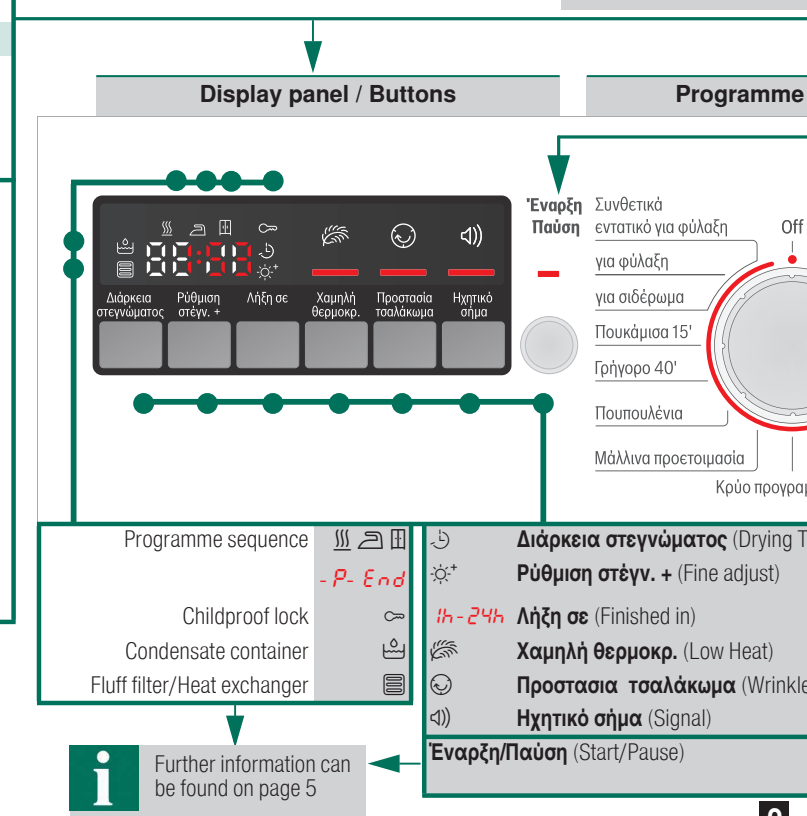
Detailed overview of the programmes and fabrics
→ Programme overview, page 7.

Observe the care instructions on the care label.

Βαμβακερά (Cottons)	Hard-wearing fabrics.
Συνθετικά (Synthetics)	Fabrics made from synthetic or blended fabrics.
Dryness levels to select with the Cottons and Synthetics programmes:	
εντατικό για φύλαξη (Cupboard Dry Plus)	Thick and multi-layered fabrics.
για φύλαξη (Cupboard Dry)	Single-layered laundry.
για σιδέρωμα (Iron Dry)	Laundry suitable for ironing after drying.
Αθλητικά Μικροΐνε (Sportswear)	Functional clothing made of microfibre.
Αντιαλλεργικό (AllergyPlus)	Cotton fabrics for drying in higher temperatures.
Ανάμεικτα (Mix)	A mixed load of fabrics made of cotton and synthetic fabrics.
Ζεστό προγραμ. χρόνου (Timed program warm)	} All types of fabric except for wool and silk.
Κρύο προγραμ. χρόνου (Timed program cold)	
Πουκάμισα 15' (Shirts 15')	Cotton or linen fabrics that are still damp and easy-care fabrics.
Γρήγορο 40' (Super Quick 40')	Synthetics, cotton or blended fabrics.
Πουπουλένια (Down)	Fabrics with down filling.
Μάλλινα προετοιμασία (Wool Finish)	Woollen fabrics that are suitable for use in washers.



Programme sel
the programme
on/off. Can be



...t the dryer if it is damaged!
...r after-sales service!

Inspect the dryer



Make sure your hands are dry.
Only grasp the plug by the plug
body.

Connect the mains plug



Sort the laundry

Remove all items from pockets,
especially cigarette lighters.
The drum must be empty prior to loading.

See also separate instructions for "Woollens basket"
(depending on model).

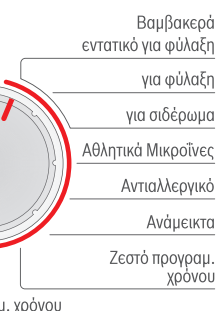
...ector for setting
... and switching the appliance
... turned in both directions.

Set and adjust the programme individually

...selector / Off



Close the door



Select 'Εναρξη/Παύση (Start/Pause)

... (time) Setting the drying time available only for timed programmes.
Fine adjustment of dryness level.
Setting the programme end.
Low-heat drying - reduced temperature.
... (e Guard Plus) Extends the anti-crease function.
Buzzer on/off.
Starts, pauses and continues the programme; activates or deactivates (Childproof lock).

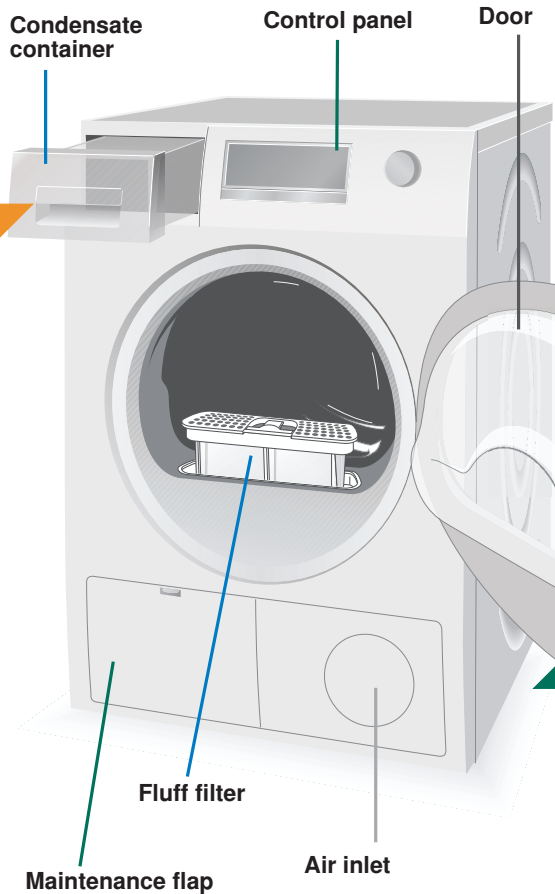
Drying



1

2

3



7



6

5

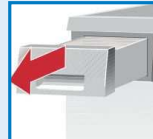
4

Empty the condensate container

Empty the container **after each** drying cycle.

1. Remove the container, holding it level.
2. Pour out the condensate.
3. Push the container back in until it clicks into place.

If (Condensate container) flashes in the display panel → What to do if..., page 11.



Clean fluff filter

i Do not operate the dryer without a fluff filter or with a defective fluff filter. A clean fluff filter minimises energy consumption.

Clean the fluff filter **after** each drying cycle.

1. Open the door. Remove any fluff from the door/around the door and pull out the fluff filter.
2. Remove the fluff from the shaft of the fluff filter.
3. Open the fluff filter and remove the fluff (sweep your hand over the fluff filter). If the fluff filter is very dirty or blocked, rinse with warm water and dry thoroughly.
4. Close and reinsert the fluff filter.



Remove the laundry and switch off the dryer

End of the programme...

Interrupt the programme

1. Open the door or press the 'Εναρξη/Παύση' (Start/Pause) button; the drying cycle is interrupted.
2. Add or remove laundry and close the door.
3. If required, select a new programme and additional functions. Select the 'Εναρξη/Παύση' (Start/Pause) button. The remaining time is updated after a few minutes.

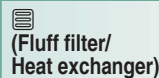


The drum and door may be hot!

Drying

Display panel and settings

Display panel (status indicators)



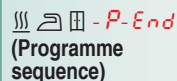
(Fluff filter/
Heat exchanger)

Clean the fluff filter → page 4/11
or clean the heat exchanger → page 8.



(Condensate
container)

Empty the condensate container → page 4/11.



(Programme
sequence)

These indicators show the programme progress in the next steps of the drying cycle:

- ☰ Drying;
- △ Iron Dry;
- ◻ Cupboard Dry;
- P- Programme pause → if required;
- End Programme end.



(Childproof lock)

You can lock the dryer to prevent the functions you have set from being changed inadvertently. To activate/deactivate **(Childproof lock)** start the programme or set the **Λήξη σε** (Finished in) option and then press and hold the **Έναρξη/Παύση** (Start/Pause) button for 5 seconds until a long acoustic signal is heard. The option activated/deactivated → **(Childproof lock)** indicator light on/off.

[h:min]
(Remaining time)

When a programme is selected, the anticipated drying time (remaining time) for the recommended load is displayed. While drying, the moisture sensors detect the actual load and correct the programme length. This is shown by jumps in the remaining time in the display panel.

Settings (indicators lights and buttons)



Selected option activated/deactivated → indicator light on/off.
See the separate **Energy-saving mode** instructions.



Διάρκεια στεγνώματος
(Drying Time)

Drying time, available only for timed programmes, can be selected from min. 0:20 h to max. 3:00 h, in 10-minute steps.



Ρύθμιση στεγν. +
(Fine adjust)

The dryness levels (e.g. Cupboard Dry) can be increased in three levels. The laundry is made drier. Default = 0. Selectable values: 0, 1, 2, 3. After setting the level of the fine adjustment for a programme, it is also retained for other programmes, until **Ρύθμιση στεγν. +** (Fine adjust) is changed again.



Λήξη σε
(Finished in)

The time when the programme has to end can be set by selecting the **Λήξη σε** (Finished in) time. The **Λήξη σε** (Finished in) time can be selected in one-hour steps, up to a maximum of 24 hours. Select the **Λήξη σε** (Finished in) button repeatedly until the required number of hours is displayed. Then press the **Έναρξη/Παύση** (Start/Pause) button to activate the **Λήξη σε** (Finished in) option. The programme ends after the selected number of hours. Several minutes after activating **Λήξη σε** (Finished in) option the display switches off to save energy. To switch it on select any button, close/open the door or turn the programme selector.



Χαμηλή θερμοκρ.
(Low Heat)

Reduced temperature for delicate fabrics, e.g. polyacrylic, polyamide or elastane, with a longer drying time.



Προστασία
τσαλάκωμα
(Wrinkle Guard Plus)

After the programme finishes, the drum moves at regular intervals to prevent creases. Laundry remains loose and fluffy. The standard setting for each programme is 60 min. Automatic anti-crease function can be extended by up to 60 min.



Ηχητικό σήμα
(Signal)

For switching the buzzer on and off. **Ηχητικό σήμα** (Signal) indicates program end if it is activated. Other sounds are not influenced by this option.

Notes on laundry ...



Labelling of fabrics

Follow the manufacturer's care instructions.

- Suitable for tumble drying.
- Dry at normal temperature.
- Dry at low temperature → in addition, select Χαμηλή θερμοκρ. (Low Heat).
- Do not tumble dry.



Do not tumble dry the following fabrics:

- Non-breathable fabrics (e.g. rubber-coated).
- Delicate materials (silk, curtains made from synthetic material) → these may crease.
- Oil-stained laundry.



Drying tips

- To ensure a consistent drying result, sort the laundry by fabric type and drying programme.
- Always dry very small fabrics (e.g. baby socks) together with large items of laundry (e.g. towels).
- Close zips, hooks and eyelets, and button up covers. Tie cloth belts, apron strings, etc. together or use a laundry bag.
- Do not over-dry easy-care laundry → risk of creasing. Allow laundry to finish drying in the air.
- Do not dry woollens in the dryer. They may, however, be refreshed in the dryer → page 7, **Μάλλινα προετοιμασία** (Wool Finish) programme (depending on model).
- Do not iron laundry immediately after drying; fold items up and leave for a while → residual moisture will then be distributed evenly.
- Knitted fabrics (e.g. T-shirts, jerseys) often shrink slightly the first time they are tumble-dried. → Do not use the **εντατικό για φύλαξη** (Cupboard Dry Plus) programme.
- Starched laundry is not always suitable for dryers → starch leaves behind a coating that reduces the drying effect.
- When washing laundry that is to be tumble dried afterwards, use the correct amount of fabric softener as specified in the manufacturer's instructions.
- For pre-dried, multi-layered fabrics or small, individual items of laundry, use the timed programme. Also suitable for subsequent drying.

Environmental protection / Energy-saving tips

- Before drying, spin the laundry in the washing machine → higher spin speeds minimise the drying time and reduce energy consumption.
- Use the maximum recommended capacity, but do not exceed it → Programme overview, page 7.
- Make sure the room is well ventilated during drying.
- Clean the fluff filter after every drying cycle → Clean the fluff filter, page 4/11.
- Do not cover or seal the air inlet on the dryer.

Programme overview

see also page 6.

Sort the laundry according to type of textile and fabric. Fabrics must be suitable for tumble drying.

After drying, laundry is to be ...	☑ ironed	☑ lightly ironed	☑ not ironed	☑ mangled
PROGRAMMES				
TEXTILE TYPE AND INFORMATION				
*Βαμβακερά (Cottons)	max. 8 kg	Hard-wearing fabrics, boil-proof fabrics made of cotton or linen.		
*Συνθετικά (Synthetics)	max. 3.5 kg	Non-iron laundry made of synthetic fibres and mixed fabric, easy-care cotton.		
για σιδερωμα (Iron Dry)	☑ ☑ ☑	The condition of the laundry means it is suitable for ironing (iron clothes in order to avoid creases).		
για φυλάξη (Cupboard Dry)	☑	Single-layered laundry.		
εντατικό για φυλάξη (Cupboard Dry Plus)	☑	Laundry with thick, multi-layered parts.		
Αθλητικά Μικροίβνη (Sportswear)	max. 1.5 kg	Fabrics with membrane coating, water-repellent fabrics, functional clothing, fleece fabrics (dry jackets/trousers with removable internal lining separately).		
Αντιαλλεργικό (AllergyPlus)	max. 6 kg	Cotton fabrics for drying in higher temperatures to keep them more hygienic.		
Ανάμεικτα (Mix)	max. 3 kg	Mixed items of laundry made of cotton and synthetics (Mix).		
Ζεστό προγραμ. χρόνου (Timed program warm)	max. 3 kg	Pre-dried, multi-layered, sensitive fabrics made of acrylic fibres, or separate small items of laundry. Also for subsequent drying.		
Κρύο προγραμ. χρόνου (Timed program cold)	max. 3 kg	All types of fabrics. For freshening up or airing of items of laundry that have been worn for a short period of time.		
Πουκάμισα 15' (Shirts 15')	max. 1 kg	For optimal drying result dry a maximum of 5 business shirts together. After drying, iron clothes or hang them out and leave for a while. The remaining moisture will be distributed evenly.		
Γρήγορο 40' (Super Quick 40')	max. 2 kg	Laundry made of synthetic fibres, cotton or blended fabrics (for example) that needs to be dried quickly. The values may differ from the those specified depending on the type of fabric, mixture of laundry to be dried, residual moisture in the fabric and loading capacity.		
Πουπουλένια (Down)	max. 1.5 kg	Garments with down feather fillings, pillows and blankets. By non quilt loads - please add just 1 piece per drying.		
Μάλλινα προετοιμασία (Wool Finish)	max. 3 kg	Woollen fabrics suitable for washers. Fabrics become fluffier but not dry. Remove fabrics once the programme has ended and allow to dry.		

*Dryness levels can be selected individually → Cupboard Dry Plus, Cupboard Dry and Iron Dry (depending on the model). Degree of dryness can be finely adjusted; multi-layered textiles require a longer drying time than single-layered items of clothing. Recommendation: Dry separately.

9402 / 9000872555



Robert Bosch Hausgeräte GmbH
Carl-Wery-Str. 34
81739 München/Deutschland

WTB86200GR

Care and cleaning



Only when switched off!

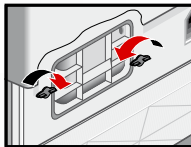
Dryer housing, control panel

- Wipe clean with a soft, damp cloth.
- Do not clean with a water jet.
- Remove detergent and cleaning agent residue immediately.
- During drying, water may occasionally accumulate between the window and the seal. This does not affect the proper operation of your dryer.

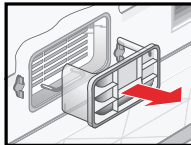
Heat exchanger

The heat exchanger requires cleaning once a month, however this varies depending on how frequently the dryer is used. Allow the dryer to cool down and place an absorbent cloth under the maintenance flap. Residual water may escape.

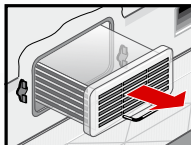
1. Unlock the maintenance flap and open completely.
2. Turn both locking levers towards each another.



3. Pull out the cap.

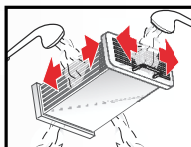


4. Remove the heat exchanger.



Take care not to damage the heat exchanger. When cleaning, use water only. Do not use hard or sharp-edged objects.

5. Rinse the heat exchanger and the cap on all sides with a jet of water to completely remove all of the fluff.

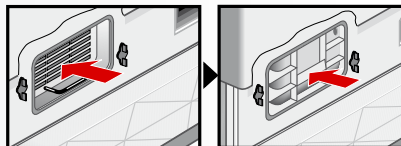


6. Remove any fluff from the seals on the dryer and heat exchanger.

7. Allow to drip dry fully.

8. First insert the heat exchanger, then the cap.

9. Turn back both locking levers and close the maintenance flap until it locks closed.



Moisture sensors

The dryer is equipped with stainless steel moisture sensors. Moisture sensors measure the moisture level of the laundry. After sustained, repeated operation, a fine layer of limescale may form on the moisture sensors.

1. Open the door.
2. Clean the moisture sensors with a damp sponge which has a rough surface.



Do not use steel wool or abrasive agents!

Installation

- Scope of delivery: dryer, operating and installation instructions, basket for woollens (depending on the model).
- Check the dryer for transport damage.
- The dryer is very heavy. Do not attempt to lift it on your own.
- Be careful to avoid sharp edges.
- Do not lift the dryer by protruding parts (e.g. the door) - risk of breakage.
- Do not set up in a room that is susceptible to frost. Freezing water may cause damage.
- If in doubt, have the appliance connected by a specialist.

1. Setting up the dryer

- The mains plug must always be accessible.
- Ensure that the appliance is placed on a clean, level and firm surface.

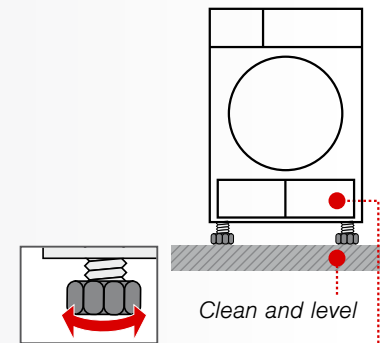


Take all accessory parts out of the drum. The drum must be empty.

- Do not obstruct the air inlet on the dryer.
 - Keep the area around the dryer clean.
 - Level the dryer using the threaded feet and a spirit level.
- Never remove the threaded feet!



Do not install the dryer behind a door or sliding door which could prevent or obstruct the dryer door from opening. This will prevent children from locking themselves in and risking their lives.



Clean and level
Make sure that the air inlet remains unobstructed

2. For mains connection, see Safety instructions → page 13.

- Connect to an AC earthed socket. If in doubt have the socket checked by a specialist.
- The mains voltage and the voltage shown on the rating plate (→ page 10) must be the same.
- The connected load and necessary fuse protection are specified on the rating plate.

3. Converting the installed load Note the fuse protection of the socket (10/16 Amps).

1. Turn the programme selector to **Off**.
2. Press and hold the **☼ Ρύθμιση στέγν. +** (Fine adjust) button.
3. Turn the programme selector to **Βαμβακερά** (Cottons) **εντατικό για φύλαξη** (Cupboard Dry Plus); wait until the recent setting appears in the display: **LO**=10A or **HI**=16A.
4. Press the **☼ Ρύθμιση στέγν. +** (Fine adjust) button to change the settings.
5. Turn the programme selector to **Off**.



Frost protection / Transport



Do not operate the dryer if there is a risk of frost.



Preparation

1. Empty the condensate container → page 4/11.
2. Select any programme using the programme selector.
3. Press the **Έναρξη/Παύση** (Start/Pause) button → condensation is pumped into the container.
4. Wait several minutes or until the dryer stops, and then empty the condensate container again.
5. Turn the programme selector to **Off**.

Optional accessories (order from the after-sales service using the order number, depending on the model)

WMZ 20500 Platform
For easier loading and unloading. The basket contained in the drawer can be used to carry the laundry.

WTZ 20410 Washer-dryer stack connection set
The dryer can be placed on top of a suitable washing machine with the same width and depth to save space. The dryer **must** be fastened to the washing machine using this connection set.
WTZ 11400: with pull-out worktop.

Technical data

Dimensions (DxWxH)	60 x 60 x 85 cm (height adjustable)
Weight	approx. 45 kg
Max. capacity	8 kg
Condensation container	4.2 l
Connection voltage	220-240 V
Connected load	2100-2800 W
Fuse protection	10 A / 16 A
Ambient temperature	5-35°C
Product number	Inside of door
Production number	

The rating plate can be found on the back of the dryer.

● **Drum interior light** (depending on model): The drum lights up after the door is opened and after the programme starts, and switches off automatically.

Consumption rates

(The value on the label is achieved at the maximum heat setting.)

Fabrics/programmes	Residual moisture in the fabrics after spinning		Drying time**		Energy consumption**	
			10 A	16 A	10 A	16 A
Cottons 8 kg						
Cupboard Dry*	1400 U/min	(50%)	140 min	108 min	3.84 kWh	3.84 kWh
	1000 U/min	(60%)	158 min	126 min	4.61 kWh	4.61 kWh
	800 U/min	(70%)	176 min	144 min	5.31 kWh	5.31 kWh
Iron Dry*						
Cupboard Dry*	1400 U/min	(50%)	116 min	86 min	2.30 kWh	2.30 kWh
	1000 U/min	(60%)	135 min	103 min	3.53 kWh	3.53 kWh
	800 U/min	(70%)	153 min	121 min	3.96 kWh	3.96 kWh
Synthetics 3.5 kg						
Cupboard Dry*	800 U/min	(40%)	52 min	46 min	1.42 kWh	1.42 kWh
	600 U/min	(50%)	65 min	56 min	1.74 kWh	1.74 kWh

* Programme setting for testing in accordance with applicable standard EN61121.

** The values may differ from those specified, depending on the type of fabric, composition of laundry to be dried, residual moisture in the fabric and the amount of laundry being loaded.

Fabrics/programmes	Drying time	Annual energy consumption
Cottons 8 kg / 4 kg*		
Cupboard Dry***	97 min / cycle	561 kWh / year

*** Programme setting for testing and energy labelling in accordance with Directive 2010/30/EU.

After-sales service

If you cannot rectify the fault yourself (e.g. switching off/on) → *What to do if...*, page 11/12, please contact our after-sales service. We will always find an appropriate solution and avoid unnecessary visits by engineers.

The contact details of your local **after-sales service** can be found in the enclosed after-sales service directory.

– **GB** 0844 8928979 (Calls from a BT landline will be charged at up to 3 pence per minute. A call set-up fee of up to 6 pence may apply.)

– **IE** 01450 2655 (0.03 € per minute at peak. Off peak 0.0088 € per minute.)

Please provide the after-sales service the product number (E no.) and the production number (FD) of the appliance.

E-Nr. _____ FD _____

Product number Production number

You can find this information:
inside the door* / in the opened service flap*
and on the rear of the appliance.

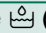

*depending on the model

Trust the expertise of the manufacturer. Contact us for assistance. In this way, you can rest assured that the repair will be carried out by trained service technicians using original spare parts.

What to do if ...



Turn the programme selector to **Off** and remove the mains plug from the socket.


- The **Έναρξη/Παύση** (Start/Pause) indicator light does not light up.
Mains plug plugged in?
Programme selected?
Check the socket fuse.
- The display panel light and indicator lights (depending on model) go out and the **Έναρξη/Παύση** (Start/Pause) indicator light flashes.
Energy-saving mode is activated → see the separate *Energy-saving mode* instructions.
- The display panel switches off.
The appliance goes into the sleep mode after activating **Λήξη σε** (Finished in) option → page 5.
- The  (**Condensate container**) indicator light flashes.
Empty the condensate container → page 4.
Press the **Έναρξη/Παύση** (Start/Pause) button to reset the displayed indication and then press the **Έναρξη/Παύση** (Start/Pause) button again to restart the appliance if necessary.
If featured, check the hose for condensation outlet.
-  (**Fluff filter/Heat exchanger**) indicator light flashes.
Clean the fluff filter → page 4.
Press the **Έναρξη/Παύση** (Start/Pause) button to reset the displayed indication and then press the **Έναρξη/Παύση** (Start/Pause) button again to restart the appliance if necessary.
Clean the heat exchanger → page 8.
- Dryer does not start.
Έναρξη/Παύση (Start/Pause) button selected?
Door closed?
Programme set?

What to do if ...

● Programme terminates shortly after starting.	Ambient temperature greater than 5°C? Is the appliance loaded with the laundry? Load too small for selected programme?/Use timed programme → <i>page 6/7</i> . Loaded laundry dry?
● Water is leaking out.	Make sure the dryer is level. Clean the heat exchanger seal.
● The door opens by itself.	Push the door closed until you hear it engage.
● Creasing.	Laundry load exceeded? Remove articles of clothing immediately after the end of the programme, hang up and pull into shape. Unsuitable programme selected → <i>page 7</i> .
● Drying result is not satisfactory (laundry feels too damp).	Warm laundry feels damper than it really is. The selected programme does not suit the load. Use another drying programme or, in addition, select the timed programme → <i>page 7</i> . Use ☀+ Ρύθμιση στέγν. + (Fine adjust) for the dryness levels → <i>page 5</i> . Fine layer of limescale on the humidity sensors → Clean the moisture sensors → <i>page 8</i> . Programme termination, e.g. tank full, mains power supply failure, door open or maximum drying time reached?
● Drying time too long.	Clean the fluff filter under running water → <i>page 4/11</i> . Insufficient supply of air → Ensure that air can circulate. Air inlet possibly blocked → Clear inlet → <i>page 9</i> . Ambient temperature higher than 35°C → Ventilate the room.
● One or more indicator lights are flashing.	Clean the fluff filter and heat exchanger → <i>page 4,8/11</i> . Check the installation conditions → <i>page 9</i> . Switch off, allow to cool, switch back on and restart the programme.
● Power failure.	Remove the laundry from the dryer immediately and spread out. This allows the heat to dissipate. Be careful as the door, the drum and the laundry may be hot.

Safety instructions



Emergency	– Pull the appliance plug out of the socket immediately or disconnect the fuse.
ONLY use the dryer...	– in rooms inside the house. – to dry fabrics.
The dryer must NEVER...	– be used for purposes other than those described above. – be modified in terms of its technology or properties.
Hazards	– The dryer must not be used by children or persons who have not been instructed in its use. – Do not leave children unsupervised near the dryer. – Keep pets away from the dryer. – Remove all objects from pockets, and lighters in particular → Risk of explosion . – Do not lean or sit on the door → Risk of tipping .
Installation	– Secure loose cables → Risk of tripping . – Do not operate a dryer if there is a risk of frost.
Mains connection	– Connect the dryer to an AC earthed socket according to specifications, otherwise it cannot be guaranteed that the appliance is completely safe. – The cable cross-section must be sufficient. – Only use earth-leakage circuit breakers with the following symbol:  – The appliance plug and socket must be compatible. – Do not use multiple plugs/connectors and/or extension cables. – Do not touch or hold the appliance plug with wet hands → Risk of electric shock . – Never pull the appliance plug out of the socket by its cable. – Do not damage the mains lead → Risk of electric shock .
Operation	– Only load the drum with laundry. Check the contents before you switch the dryer on. – Do not use the dryer if the laundry has been in contact with solvents, oil, wax, grease or paint (e.g. hair styling products, nail varnish remover, stain remover, cleaning solvent, etc.) → Risk of fire/explosion . – Dust (e.g. coal dust, flour) poses a danger: Do not use the dryer → Risk of explosion . – Do not turn off the dryer until the drying process ends, unless the laundry will be removed quickly and spread out, so that the heat can dissipate. – Do not put laundry containing foamed material/rubber in the dryer → elastic material may be destroyed and the dryer be damaged due to possible deformation of the foamed material. – When cleaning the fluff filter, make sure that no foreign material (down or filling material) gets into the air duct opening. If necessary, clean the drum beforehand with a vacuum cleaner. If foreign material should still get into the air duct → call the after-sales service → Risk of fire/explosion . – Light things, such as long hair, may be sucked into the air inlet of the dryer → Risk of injury . – Switch off the dryer once the programme has ended. – The water from condensation is not drinking water and may be contaminated with fluff.
Defect	– Do not use the dryer if it is defective or if you suspect that it is. Repairs must only be carried out by the after-sales service. – Do not use the dryer if the mains cable is defective. To avoid danger, only have the defective mains cable replaced by the after-sales service.
Spare parts	– For safety reasons, you must only use genuine spare parts and accessories.
Disposal	– Pull out the appliance plug, then cut off the mains cable from the appliance. Dispose of the appliance at a municipal waste disposal site. – Packaging: Keep all packaging out of reach of babies and children → Risk of suffocation . – All materials are environmentally sound and can be reused. Dispose of them in an environmentally-responsible manner.



Dryer



BOSCH

en Instruction manual