

Your washing machine

Congratulations - you have chosen a modern, high-quality domestic appliance manufactured by Bosch. This washing machine is distinguished by its economical water and energy consumption. Each machine that leaves our factory has been inspected thoroughly to ensure that it functions properly and is in perfect condition.

For more information on our products, accessories, replacement parts and services, visit our website www.bosch-home.com or contact one of our after-sales service centres.

Observe the safety instructions on page 8.

Do not operate this washing machine until you have read these instructions and the separate installation instructions.

Contents

Intended use	1
Programmes	1
Setting and adjusting the programme	3
Washing	3/4
After washing	4
Individual settings	5/6
Overview of programmes	7
Safety instructions	8
Consumption values	8
Important information	9
Insert for liquid detergent	10
Care	10
Information on the display panel	10
Instructions for blockages	11
What to do if...	12/13
Emergency release	13
After-sales service	13

Environmental/savings tips

- Always fill the washing machine with a maximum amount of laundry for the relevant programme.
- Wash normally soiled laundry without a prewash.
- Measure the detergent according to the manufacturer's instructions and water hardness.
- If you want to dry the laundry in the tumble dryer afterwards, select a spin speed suggested by the dryer manufacturer.

Intended use

- For domestic use only
- For washing machine-washable fabrics and hand-washable wool in detergent solution
- To be operated with cold drinking water and commercially available detergents and care products which are suitable for use in washing machines.

- Do not leave children unattended near the washing machine.
- The washing machine is not to be used by children or persons not familiar with the operating instructions.
- Keep pets away from the washing machine.

Programmes

Detailed overview of programmes → page 7. Temperature and spin speed can be selected individually, depending on the selected programme and programme progress.

Cottons	Hard-wearing fabrics
+ Prewash	Hard-wearing fabrics, prewash at 30 °C
Easy-Care	Easy-care fabrics
+ Prewash	Easy-care fabrics, prewash at 30 °C
Mix	Different types of laundry
Delicate/Silk	Delicate washable fabrics
Wool	Hand/machine-washable wool
Rinse	Extra rinse with spin
Spin	Extra spin with selectable spin speed
Drain	the rinsing water when (Rinse hold = no final spin)
Gentle Spin	Extra spin with reduced spin speed
SuperQuick 15'	Super Quick programme
Hygiene	Hard-wearing fabrics, longer washing and additional rinsing for particularly sensitive skin
Sportswear	Fabrics made from microfibre
Easy-Care+	Dark-coloured fabrics

Preparation

Correct installation according to the separate Installation instructions.

Check the machine
 - Never use a damaged machine.
 - Inform the after-sales service.

Connect the mains plug
 - Make sure your hands are dry.
 - Take hold of the plug only.

Turn the tap on

Insert for liquid detergent (depending on model), page 10

Compartment II: detergent for main wash, Water softener, bleach, stain remover
Compartment : fabric softener, starch
Compartment I: detergent for prewash

Sort and load the laundry

Follow the manufacturer's care information. According to the information on the care labels. According to type, colour, level of soiling and temperature. Do not exceed the maximum load → page 7.

Observe the important information → page 9. Insert items of laundry of varying sizes.

Add detergent and care product
 Measure according to: The amount of laundry, level of soiling, water hardness (ask your water supply company) and manufacturer's instructions. On models without an insert for liquid detergent: Pour liquid detergent into the appropriate dispenser and place in the drum. During operation, open the detergent drawer with care.

Dilute thick fabric softener and conditioner with water. This prevents blockages.

Set and adjust the programme**
 **If the symbol is lit in the display panel, the childlock is active → Deactivate it, page 5.

Additional functions and options buttons → individual settings, page 5

Programme selector for switching the machine on and off and for selecting the programme. Can be turned in either direction.

All buttons are sensitive and need only to be touched lightly. If you press and hold the (Finished in) option button, the appliance automatically runs through the settings options.

Status indicators
 Wash, rinse, spin, programme duration or end (- -)
 Childlock → page 5
 Open the washing machine door, add laundry → page 4, 5

Washing

Before washing for the first time
 Run a wash cycle without any laundry → page 9

Sort and load the laundry
 Follow the manufacturer's care information. According to the information on the care labels. According to type, colour, level of soiling and temperature. Do not exceed the maximum load → page 7.

Observe the important information → page 9. Insert items of laundry of varying sizes.

Add detergent and care product
 Measure according to: The amount of laundry, level of soiling, water hardness (ask your water supply company) and manufacturer's instructions. On models without an insert for liquid detergent: Pour liquid detergent into the appropriate dispenser and place in the drum. During operation, open the detergent drawer with care.

Dilute thick fabric softener and conditioner with water. This prevents blockages.

Set and adjust the programme**
 **If the symbol is lit in the display panel, the childlock is active → Deactivate it, page 5.

Additional functions and options buttons → individual settings, page 5

Programme selector for switching the machine on and off and for selecting the programme. Can be turned in either direction.

All buttons are sensitive and need only to be touched lightly. If you press and hold the (Finished in) option button, the appliance automatically runs through the settings options.

Status indicators
 Wash, rinse, spin, programme duration or end (- -)
 Childlock → page 5
 Open the washing machine door, add laundry → page 4, 5

Switch off
 Turn the programme selector to **Off**.

Turn off the tap
 Not required for AquaStop models → Refer to Installation instructions.

Remove the laundry
 Open the washing machine door and remove the laundry. If (Rinse hold = no final spin) is active: turn the programme selector to **Drain** or **Spin** . Select the spin speed if necessary. Press **Start/Reload**.

- Remove any foreign objects - risk of rusting.
 - Leave the washing machine door and detergent drawer open so that any residual water can dry away.

End of programme when ...
 ... the **Start/Reload** button is off and - - appears in the display panel.
 If the display panel lighting is off, press any button → Energy-saving mode, page 5.

Cancel the programme
 Programmes at high temperatures:
 - To cool the laundry: Select **Rinse** .
 - Press **Start/Reload**.
 Programmes at lower temperatures:
 - Select **Spin** or **Drain** .
 - Press **Start/Reload**.

Change the programme if...
 ... you have selected the wrong programme by mistake:
 - Reselect the programme.
 - Press **Start/Reload**. The new programme starts from the beginning.

Add laundry when ... → page 5
 ... **Start/Reload** is pressed and in the display panel both **YES +** symbols are then lit.
 If is lit, the washing machine door cannot be opened. Select the **Start/Reload** button.

Individual settings

Options buttons
 The spin speed and temperature can be changed before and during the selected programme. The effects depend on the programme progress.

(Temperature °C)
 You can change the displayed washing temperature. The maximum washing temperature that can be selected depends on the programme that has been set.

(Finished in)
 When you select the programme, the relevant programme duration is displayed. You can delay the start of the programme before it begins. The "Finished in" time can be set in increments of one hour up to a maximum of 24 hours. Press the (Finished in) button repeatedly until the desired number of hours is displayed (h = hour). Press **Start/Reload**.

(Spin speed in rpm) / **(Rinse hold = no final spin)**
 You can change the spin speed shown or select (Rinse hold = no final spin, laundry remains in the water after the final rinse, --- appears in the display panel). You can change the spin speed shown. The maximum selectable spin speed depends on the model and on which programme is currently selected.

Additional functions → and overview of programmes, page 7
Speed Perfect For washing in a shorter time with a washing result comparable to that of the standard programme. Maximum load → Overview of programmes, page 7.

Eco Perfect For saving energy with a washing result comparable to that of the standard programme.

Easy Iron Special spin sequence with subsequent fluffing. Gentle final spin at reduced speed. Residual moisture in the laundry is increased slightly.

Rinse Plus Additional rinse cycle. For areas with very soft water or for further improving the washing result.

Childlock
 in the display panel
 You can lock the washing machine to prevent the functions you have set from being changed inadvertently.
ON/OFF: after the start/end of the programme, press and hold **Start/Reload** for approx. 5 seconds.
 Note: The childlock can remain activated until you wish to start the next programme, even after switching off the machine. Then you can deactivate the childlock before starting the programme and activate it again as necessary once the programme has started.

Note:
 - The symbol is lit: Childlock active.
 - The symbol flashes: Childlock active and then the programme selector is altered. To prevent the programme from stopping, turn the programme selector back to the original programme, the symbol is lit again.

Add laundry
YES +
 If you want to add additional items of laundry after the programme has started, press the **Start/Reload** button. The machine checks whether adding laundry is possible. **YES +** are lit: Adding laundry is possible. flashing: Wait until **YES +** are lit. Note: Only open the washing machine door when both the **YES +** symbols are lit. : It is not possible to add laundry. Note: for safety reasons, the washing machine door remains locked when the water level and/or temperature is high, or during spinning. To continue the programme, press the **Start/Reload** button.

Energy saving mode
 If the washing machine is switched on and is not operated for several minutes before the programme starts or at the end of the programme, the display panel light goes out and the **Start/Reload** button flashes. Press any button to turn the light back on.

Individual settings

Signal
 1. Activate the setting mode for signal volume
 Set to → 1 step, the display panel lights up → Press and hold + 1 step, release

2. Set the volume for ...
 Set the volume* → skip → 1 step → Set the volume* → Set to

* you may need to select the function several times

Start/Reload
 To start the programme or to subsequently load additional laundry, and to activate/deactivate the childlock.

Overview of programmes

Check the consumption values table on page 8 and the instructions on page 9.

Additional functions; options; information

Programmes
 max. °C
 Cottons + Prewash * - 90 °C 8 kg/ 5 kg*
 Hygiene ** - 60 °C
 Easy-Care + Prewash * - 60 °C 4 kg
 Mix ** - 40 °C 3.5 kg
 Easy-Care+ * - 40 °C
 Delicate/Silk ** - 40 °C
 Wool ** - 40 °C 2 kg
 SuperQuick 15' ** - 40 °C
 Sportswear * - 40 °C

Additional programmes
 reduced load for additional **Speed Perfect** function.
 1. As a **short programme**, **Mix** **40 °C** is ideal, when **maximum spin speed** is selected. Programmes without prewash - add detergent to compartment II, programmes with prewash - distribute the detergent between compartments I and II.

Type of laundry
 max. °C
 Hard-wearing fabrics, heat-resistant fabrics made of cotton or linen 8 kg/ 5 kg*
 Hard-wearing fabrics made of cotton or linen 4 kg
 Easy-care fabrics made of cotton, linen, synthetic fibres or blended fabrics 3.5 kg
 Fabrics made of cotton or easy-care fabrics 3.5 kg
 Dark-coloured fabrics made of cotton and dark easy-care fabrics * - 40 °C
 For delicate, washable fabrics, e.g. made of silk, satin, synthetic fibres or blended fabrics (e.g. curtains) ** - 40 °C
 Hand or machine-washable fabrics made of wool or containing wool ** - 40 °C
 Easy-care fabrics made of cotton, linen, synthetic fibres or blended fabrics 2 kg
 Fabrics made from microfibre * - 40 °C

Rinse , **Spin** , **Drain** , **Gentle Spin**
 Do not treat laundry with fabric softener

Additional programmes
 reduced load for additional **Speed Perfect** function.
 1. As a **short programme**, **Mix** **40 °C** is ideal, when **maximum spin speed** is selected. Programmes without prewash - add detergent to compartment II, programmes with prewash - distribute the detergent between compartments I and II.

Additional programmes
 reduced load for additional **Speed Perfect** function.
 1. As a **short programme**, **Mix** **40 °C** is ideal, when **maximum spin speed** is selected. Programmes without prewash - add detergent to compartment II, programmes with prewash - distribute the detergent between compartments I and II.

Additional programmes
 reduced load for additional **Speed Perfect** function.
 1. As a **short programme**, **Mix** **40 °C** is ideal, when **maximum spin speed** is selected. Programmes without prewash - add detergent to compartment II, programmes with prewash - distribute the detergent between compartments I and II.

Additional programmes
 reduced load for additional **Speed Perfect** function.
 1. As a **short programme**, **Mix** **40 °C** is ideal, when **maximum spin speed** is selected. Programmes without prewash - add detergent to compartment II, programmes with prewash - distribute the detergent between compartments I and II.

Additional programmes
 reduced load for additional **Speed Perfect** function.
 1. As a **short programme**, **Mix** **40 °C** is ideal, when **maximum spin speed** is selected. Programmes without prewash - add detergent to compartment II, programmes with prewash - distribute the detergent between compartments I and II.

Additional programmes
 reduced load for additional **Speed Perfect** function.
 1. As a **short programme**, **Mix** **40 °C** is ideal, when **maximum spin speed** is selected. Programmes without prewash - add detergent to compartment II, programmes with prewash - distribute the detergent between compartments I and II.

Additional programmes
 reduced load for additional **Speed Perfect** function.
 1. As a **short programme**, **Mix** **40 °C** is ideal, when **maximum spin speed** is selected. Programmes without prewash - add detergent to compartment II, programmes with prewash - distribute the detergent between compartments I and II.

Additional programmes
 reduced load for additional **Speed Perfect** function.
 1. As a **short programme**, **Mix** **40 °C** is ideal, when **maximum spin speed** is selected. Programmes without prewash - add detergent to compartment II, programmes with prewash - distribute the detergent between compartments I and II.

Additional programmes
 reduced load for additional **Speed Perfect** function.
 1. As a **short programme**, **Mix** **40 °C** is ideal, when **maximum spin speed** is selected. Programmes without prewash - add detergent to compartment II, programmes with prewash - distribute the detergent between compartments I and II.

Additional programmes
 reduced load for additional **Speed Perfect** function.
 1. As a **short programme**, **Mix** **40 °C** is ideal, when **maximum spin speed** is selected. Programmes without prewash - add detergent to compartment II, programmes with prewash - distribute the detergent between compartments I and II.

Safety instructions

- Read the Instruction Manual and Installation Instructions and all other information enclosed with the washing machine and use the machine accordingly.
- Retain the documents for subsequent use.

- Risk of electric shock**
- Never pull on the cable to disconnect the mains plug.
 - Only insert/pull out the mains plug with dry hands.

- Danger to life**
- For worn-out appliances:
- Disconnect the mains plug.
 - Cut through the mains cable and remove complete with plug.
 - Destroy the lock on the washing machine door. This will prevent children from locking themselves in and risking their lives.

- Danger of suffocation**
- Keep packaging, film and packaging parts out of the reach of children.

- Risk of poisoning**
- Keep detergents and care products out of the reach of children.

- Risk of explosion**
- Items of laundry pretreated with cleaning agents containing solvents, e.g. stain remover/cleaning solvent may cause an explosion after being loaded into the washing machine.

- Risk of injury**
- Rinse items of laundry thoroughly by hand beforehand.
 - The washing machine door can become very hot.
 - Be careful when draining hot detergent solution.
 - Do not climb onto the washing machine.
 - Do not lean on the open washing machine door.
 - Do not reach into the drum if it is still rotating.

Consumption values depending on model

Programme	Load	Power***	Water***	Programme duration***
Cottons 30 °C*	8 kg	0,35 kWh	76 l	2¼ h
Cottons 40 °C*	8 kg	0,97 kWh	76 l	2¾ h
Cottons 60 °C*	8 kg	1,36 kWh	76 l	2¾ h
Cottons 90 °C	8 kg	2,34 kWh	87 l	2 ½ h
Easy-Care 40 °C*	4 kg	0,71 kWh	62 l	2 h
Mix 40 °C*	3,5 kg	0,47 kWh	49 l	1 h
Delicate/Silk 30 °C	2 kg	0,14 kWh	35 l	¾ h
Wool 30 °C	2 kg	0,16 kWh	40 l	¾ h

* Programme setting for testing in accordance with applicable standard EN60456. Note on comparative tests: When testing the test programmes, wash the specified load using the maximum spin speed.

Programme	Additional function	Load	Annual energy consumption	Annual water consumption
Cottons 40/60 °C	EcoPerfect**	8/4 kg	189 kWh	10500 l

** Programme setting for testing and energy labelling in accordance with EU directive 2010/30/EU with cold water (15 °C).
*** The values deviate from the indicated values depending on water pressure, water hardness, and water inlet temperature, ambient temperature, type, amount and soiling of the laundry, detergent used, fluctuations in the power supply and selected additional functions.

The programme used for the evaluation of the captioned model under the Mandatory Water Efficiency Labelling Scheme (MWELS) is as follows: Cottons 60°C + EcoPerfect

Important information

- Before washing for the first time**
- Do not put any laundry in the machine. Turn the tap on. Pour the following into compartment II:
- approx. **1 litre** water
 - detergent (amount to be used according to the manufacturer's instructions for light soiling and according to water hardness)
- Turn the programme selector to **Easy-Care** 60 °C and press **Start/Reload**. At the end of the programme, turn the programme selector to **Off**.

Protecting the laundry and the machine

- When measuring detergent, care products and cleaning agents, follow the manufacturer's instructions.
- Empty pockets.
- Look out for metal items (paperclips, etc.).
- Wash delicates in a laundry bag (tights, curtains, underwired bras).
- Fasten zips, do up any buttons.
- Brush sand out of pockets and collars.
- Remove curtain fittings or place in the laundry bag.

Loading laundry

Insert items of laundry of varying sizes. Take care not to trap items of laundry between the washing machine door and the rubber seal.

Laundry with varying degrees of soiling

- Wash new items of clothing separately.
- light No prewash. If required, select the additional **Speed Perfect** function.
- heavy Pretreat any stains as necessary.

Soaking

Load laundry of the same colour. Pour soaking agent/detergent into compartment II in accordance with the manufacturer's instructions. Set the programme selector to **Cottons** 30 °C and select **Start/Reload**. After approx. 10 minutes, press **Start/Reload** to stop the programme. After the required soaking time, press **Start/Reload** again to continue the programme, or change the programme.

Starching

Laundry must not be treated with fabric softener. Starching is possible in all wash programmes if liquid starch is used. Pour starch into the fabric softener compartment in accordance with the manufacturer's instructions (rinse first if necessary).

Dyeing/bleaching

Dye should only be used in normal household quantities. Salt may damage stainless steel. Always follow the dye manufacturer's instructions. Do **not** use the washing machine for bleaching clothes.

Insert for liquid detergent depending on model

- Position the insert for dispensing liquid detergent:
- Remove the detergent drawer completely → page 10.
 - Slide the insert forwards.
- Do not use the insert (slide upwards):
- For gel-type detergents and washing powder,
 - for programmes with **+ Prewash** ↓ or Ⓞ (Finished in) option

Care

- Machine housing, control panel**
- Remove detergent residue immediately.
 - Wipe with a soft, damp cloth.
 - Do not clean with a jet of water.

Cleaning the detergent drawer ...

- ... if it contains detergent or fabric softener residues.
- Pull out, press insert down, remove drawer completely.
 - To remove the insert: press the insert upwards from below with your finger.
 - Clean the detergent dispenser tray and insert with water and a brush and dry it.
 - Fit the insert and lock it in place (push the cylinder onto the guide pin).
 - Push in the detergent drawer.

Leave the detergent drawer open so that any residual water can evaporate.

Drum

Leave the washing machine door open so that the drum can dry out. Use chlorine-free cleaning agent, not steel wool.

Descaling

Ensure there is no laundry in the machine. This should not be necessary if the correct detergent dosage has been used. If it is necessary, however, proceed according to the descaling agent manufacturer's instructions. Suitable descalers can be obtained via our website or from our after-sales service (→ page 13).

Instructions in the display panel depending on model

flashing	Close the washing machine door properly; laundry may be caught.
E: 17, 29	Open the tap completely, supply hose kinked or trapped; Clean the filter → page 11, water pressure too low.
E: 18	Detergent solution pump blocked; Clean the detergent solution pump → page 11. Drain hose/waste pipe blocked; Clean the drain hose on the siphon → page 11.
E: 23	Water in the base tub, appliance leaking. Call the after-sales service.
Other displays	Switch off the appliance, wait for 5 seconds and switch it back on. If the display appears again, call the after-sales service → page 13.

Information about blockages

Detergent solution pump

- Turn the programme selector to **Off** and disconnect the mains plug.
- Open and remove the service flap.
 - Take the drain hose out of the retainer. Remove the sealing cap, allow the detergent solution to flow out. Push the sealing cap back on.
 - Unscrew the pump cover carefully (residual water).
 - Clean the interior, pump cover thread and pump housing (the impeller in the detergent solution pump must be able to rotate).
 - Replace the pump cover and screw it on tightly. The handle points upright. Replace the drain hose in the holder.
 - Refit the service flap and close it.

Drain hose on the siphon

- Turn the programme selector to **Off** and disconnect the mains plug.
- Loosen the hose clamp, remove the drain hose carefully (residual water).
 - Clean the drainage hose and siphon connecting piece.
 - Reattach the drainage hose and secure the connection with the hose clamp.

Filter in the water supply

Risk of electric shock
Do not immerse the AquaStop safety device in water (contains electric valve).

- Reduce the water pressure in the supply hose:
- Turn off the tap.
 - Select any programme (except Spin Ⓞ / Drain Ⓞ).
 - Press **Start/Reload**. Let the programme run for approximately 40 seconds.
 - Turn the programme selector to **Off**. Disconnect the mains plug.

Clean the filter:

- Disconnect the hose from the tap.
- Clean the filter with a small brush.

and/or on standard and AquaSecure models: Remove the hose from the back of the appliance, remove the filter using pliers and clean the filter.

- Connect the hose and check for leaks.

What to do if...

- Water is leaking out.
 - Attach/replace the drain hose correctly.
 - Tighten the screw connection of the supply hose.
- No water supply. Detergent not dispensed.
 - Start/Reload** not pressed?
 - Tap not turned on?
 - Filter blocked? Clean the filter → page 11.
 - Supply hose kinked or trapped?
- Washing machine door cannot be opened.
 - Safety function active. Programme stopped? → page 4.
 - (Rinse hold = no final spin) selected? → page 3, 4.
 - Can be opened by emergency release only? → page 13.
- Programme does not start.
 - Start/Reload** pressed or Ⓞ (Finished in) time selected?
 - Washing machine door closed?
 - Childlock active? Deactivate → page 5.
- Detergent solution does not drain.
 - (Rinse hold = no final spin) selected? → page 3, 4.
 - Clean the detergent solution pump → page 11.
 - Clean the waste pipe and/or drainage hose.
- Water not visible in the drum.
 - Not a fault - water below the visible area.
- Spin result not satisfactory. Laundry wet/too damp.
 - Not a fault - the imbalance monitoring system has interrupted the spin because the laundry is unevenly distributed. Distribute large and small items of laundry evenly in the drum.
 - Easy Iron** pressed? → page 5.
 - Speed selected too low? → page 5.
- The programme duration changes during the washing cycle.
 - Not a fault - the programme sequence is optimised for the relevant washing process. This can cause changes in the programme duration in the display panel.
- Repeated spin start-up.
 - Not a fault - imbalance monitoring system is equalising the imbalance.
- Residual water in the compartment for care products.
 - Not a fault - the action of the care product is not affected.
 - Clean the insert if necessary → page 10.
- Odour formation in the washing machine.
 - Run the **Cottons** 90 °C programme with the washing machine empty. Use standard detergent.
- Status indicator flashing. Detergent may escape from the detergent drawer.
 - Too much detergent used? Mix 1 tablespoon of fabric softener with ½ litre water and pour the mixture into compartment II. (Not for outdoor textiles or those made with down.)
 - Reduce the amount of detergent for the next wash cycle.
- Pronounced generation of noise, vibration and "wandering" during the spin cycle.
 - Are the appliance feet fixed? Secure appliance feet → Installation instructions.
 - Transportation safety devices removed? Remove transportation safety devices → Installation instructions.
 - Clean the detergent solution pump → page 11.
- Noises during spinning and draining.
 - Clean the detergent solution pump → page 11.
- Display panel/indicator lamps do not function during operation.
 - Power cut?
 - Circuit breakers tripped? Switch circuit breakers back on or replace.
 - Energy saving mode active? → page 5.
 - If a fault occurs repeatedly, call the after-sales service.
- Programme sequence longer than usual.
 - Not a fault - imbalance monitoring system is equalising the imbalance by repeatedly redistributing the laundry.
 - Not a fault - foam detection system active - adds an additional rinse cycle.
- There are detergent residues on the laundry.
 - In isolated cases, phosphate-free detergents contain water-insoluble residues.
 - Select **Rinse** or brush down the laundry after washing.

What to do if...

- In Add laundry mode, **Start/Reload** flashes very quickly and a signal sounds.
 - Water level too high. Not possible to add more laundry. Close the washing machine door immediately if necessary.
 - Press **Start/Reload** to continue the programme.
- If you cannot correct a fault yourself (switching on/off) or a repair is required:
- Turn the programme selector to **Off** and pull the mains plug out of the socket.
 - Turn off the tap and call the after-sales service → page 13.

Emergency release e.g. in the event of a power cut

The programme continues when the power supply is restored. However, if the laundry has to be removed, the washing machine door can be opened as follows:

Risk of scalding

The detergent solution and laundry may be hot. If possible, leave to cool down. Do not reach into the drum if it is still rotating. Do not open the washing machine door if water can be seen through the glass.

- Turn the programme selector to **Off** and pull out the mains plug.
- Drain the detergent solution → page 11.
- Pull the emergency release downwards with a tool and release. Washing machine door can then be opened.

After-sales service

- If you cannot remedy the fault yourself (What to do if ... → page 12, 13), contact our after-sales service. We will always find a suitable solution to avoid unnecessary visits by repair personnel.
- You can find the contact details for your nearest after-sales service here or in the after-sales service directory (depending on the model).
 - GB** 0844 8928979 (Calls from a BT landline will be charged at up to 3 pence per minute. A call set-up fee of up to 6 pence may apply.)
 - IE** 01450 2655
- Please give the after-sales service the product number (E-Nr.) and the production number (FD) of the appliance.

Product number: **E-Nr.** _____ **FD** _____
Production number

This information can be found: on the inside of the washing machine door* / open service flap* and on the rear of the appliance. *depending on the model

Trust the manufacturer's technical expertise. Turn to us. By doing so, you will ensure that the repair is carried out by trained service technicians equipped with original spare parts



en Instruction manual

Your washing machine

Congratulations - you have chosen a modern, high-quality domestic appliance manufactured by Bosch. This washing machine is distinguished by its economical water and energy consumption.

Each machine that leaves our factory has been inspected thoroughly to ensure that it functions properly and is in perfect condition.

For more information on our products, accessories, replacement parts and services, visit our website www.bosch-home.com or contact one of our after-sales service centres.



Observe the safety instructions on page 8.



Do not operate this washing machine until you have read these instructions and the separate installation instructions.

Contents

	Page
Intended use	1
Programmes	1
Setting and adjusting the programme	3
Washing	3/4
After washing	4
Individual settings	5/6
Overview of programmes	7
Safety instructions	8
Consumption values	8
Important information	9
Insert for liquid detergent	10
Care	10
Information on the display panel	10
Instructions for blockages	11
What to do if	12/13
Emergency release	13
After-sales service	13



Environmental/savings tips

- Always fill the washing machine with a maximum amount of laundry for the relevant programme.
- Wash normally soiled laundry without a prewash.
- Measure the detergent according to the manufacturer's instructions and water hardness.
- If you want to dry the laundry in the tumble dryer afterwards, select a spin speed suggested by the dryer manufacturer.

Intended use

- For domestic use only
- For washing machine-washable fabrics and hand-washable wool in detergent solution
- To be operated with cold drinking water and commercially available detergents and care products which are suitable for use in washing machines.



- Do not leave children unattended near the washing machine.
- The washing machine is not to be used by children or persons not familiar with the operating instructions.
- Keep pets away from the washing machine.

Programmes

Detailed overview of programmes → page 7.

Temperature and spin speed can be selected individually, depending on the selected programme and programme progress.

Cottons	Hard-wearing fabrics
+ Prewash	Hard-wearing fabrics, prewash at 30 °C
Easy-Care	Easy-care fabrics
+ Prewash	Easy-care fabrics, prewash at 30 °C
Mix	Different types of laundry
Delicate/Silk	Delicate washable fabrics
Wool	Hand/machine-washable wool
Rinse	Extra rinse with spin
Spin	Extra spin with selectable spin speed
Drain	the rinsing water when (Rinse hold = no final spin)
Gentle Spin	Extra spin with reduced spin speed
SuperQuick 15'	Super Quick programme
Hygiene	Hard-wearing fabrics, longer washing and additional rinsing for particularly sensitive skin
Sportswear	Fabrics made from microfibre
Easy-Care+	Dark-coloured fabrics

Preparation



Correct installation according to the separate Installation instructions.



Check the machine

- Never use a damaged machine.
- Inform the after-sales service.



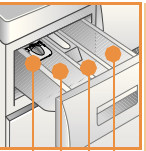
Connect the mains plug



- Make sure your hands are dry.
- Take hold of the plug only.



Turn the tap on



Insert for liquid detergent (depending on model), page 10

Compartment II: detergent for main wash, Water softener, bleach, stain remover

Compartment : fabric softener, starch

Compartment I: detergent for prewash

Additional functions

 Speed Perfect Eco Perfect
 Easy Iron Rinse Plus

Display panel / Options buttons

Programme

 Easy-Care + Sportswear Hygiene SuperQuick 15' Gentle Spin Drain Spin

- 90 °C	(Temperature)	Select the temperature (
1 - 24h	(Finished in)	Programme end after
- 1600*	(rpm)	Select the spin speed (* r = no final spin, laundry rerinsed; - - - appears in the display)
Status indicators		Programme status indicators
-		Wash, rinse, spin, programme end
		Childlock → page 5
		Open the washing machine door

Before washing for the first time
Run a wash cycle without any laundry → page 9

Sort and load the laundry

Follow the manufacturer's care information. According to the information on the care labels. According to type, colour, level of soiling and temperature. Do not exceed the maximum load → page 7.

Observe the important information → page 9. Insert items of laundry of varying sizes.

Close the washing machine door. Take care not to trap items of laundry between the washing machine door and the rubber seal.

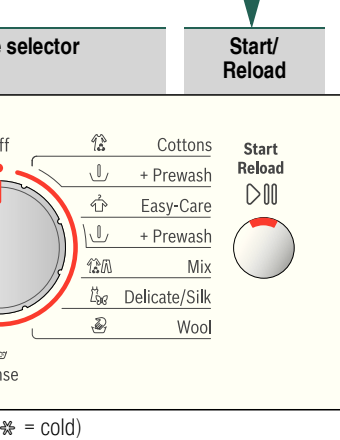
Add detergent and care product

Measure according to: The amount of laundry, level of soiling, water hardness (ask your water supply company) and manufacturer's instructions.

On models without an insert for liquid detergent: Pour liquid detergent into the appropriate dispenser and place in the drum. During operation, open the detergent drawer with care.

i Dilute thick fabric softener and conditioner with water. This prevents blockages.

Set** and adjust the programme



i **If the ∞ symbol is lit in the display panel, the childlock is active → Deactivate it, page 5.
Additional functions and options buttons → Individual settings, page 5

Press **▶▶▶ Start/Reload**

i Programme selector for switching the machine on and off and for selecting the programme. Can be turned in either direction.

i All buttons are sensitive and need only to be touched lightly. If you press and hold the **⏸** (Finished in) option button, the appliance automatically runs through the settings options.

model-dependent) or **⏸** (Rinse hold remains in the water after the final rinse, display panel).

ators:
me duration or end (- **⏸** -)

ne door, add laundry → page 4, 5

Washing



Switch off

Turn the programme selector to **Off**.



Turn off the tap

Not required for AquaStop models → Refer to Installation instructions.



Remove the laundry

Open the washing machine door and remove the laundry. If **⏸** (Rinse hold = no final spin) is active: turn the programme selector to **Drain** **⏸** or **Spin** **⏸**. Select the spin speed if necessary. Press **▶▶▶ Start/Reload**.



- Remove any foreign objects - risk of rusting.
- Leave the washing machine door and detergent drawer open so that any residual water can dry away.

1

2

3

End of programme when ...

... the **▶▶▶ Start/Reload** button is off and - **⏸** - appears in the display panel.



If the display panel lighting is off, press any button → Energy-saving mode, page 5.

Cancel the programme

- Programmes at high temperatures:
- To cool the laundry: Select **Rinse** **⏸**.
 - Press **▶▶▶ Start/Reload**.
- Programmes at lower temperatures:
- Select **Spin** **⏸** or **Drain** **⏸**.
 - Press **▶▶▶ Start/Reload**.

Change the programme if...

- ... you have selected the wrong programme by mistake:
- Reselect the preprogramme.
 - Press **▶▶▶ Start/Reload**. The new programme starts from the beginning.

Add laundry when ... → page 5

... **▶▶▶ Start/Reload** is pressed and in the display panel **both** **⏸** + **⏸** symbols are then lit. If **⏸** is lit, the washing machine door cannot be opened. Select the **▶▶▶ Start/Reload** button.

Individual settings

Options buttons

The spin speed and temperature can be changed before and during the selected programme. The effects depend on the programme progress.

🌡️ (Temperature °C)

You can change the displayed washing temperature. The maximum washing temperature that can be selected depends on the programme that has been set.

🕒 (Finished in)

When you select the programme, the relevant programme duration is displayed. You can delay the start of the programme before it begins. The "Finished in" time can be set in increments of one hour up to a maximum of 24 hours. Press the 🕒 (Finished in) button repeatedly until the desired number of hours is displayed (h = hour). Press ▶️ Start/Reload.

🌀 (Spin speed in rpm) / 🛑 (Rinse hold = no final spin)

You can change the spin speed shown or select 🛑 (Rinse hold = no final spin, laundry remains in the water after the final rinse, --- appears in the display panel). You can change the spin speed shown. The maximum selectable spin speed depends on the model and on which programme is currently selected.

Additional functions → and overview of programmes, page 7

⚡ **Speed Perfect** For washing in a shorter time with a washing result comparable to that of the standard programme. Maximum load → Overview of programmes, page 7.

🌿 **Eco Perfect** For saving energy with a washing result comparable to that of the standard programme.

👕 **Easy Iron** Special spin sequence with subsequent fluffing. Gentle final spin at reduced speed. Residual moisture in the laundry is increased slightly.

🚿 **Rinse Plus** Additional rinse cycle. For areas with very soft water or for further improving the washing result.

Childlock

🔒 in the display panel You can lock the washing machine to prevent the functions you have set from being changed inadvertently.

ON/OFF: after the start/end of the programme, press and hold ▶️ Start/Reload for approx. 5 seconds.

Note: The childlock can remain activated until you wish to start the next programme, even after switching off the machine.

Then you can deactivate the childlock before starting the programme and activate it again as necessary once the programme has started.

Note:

- The 🔒 symbol is lit: Childlock active.
- The 🔒 symbol flashes: Childlock active and then the programme selector is altered.

To prevent the programme from stopping, turn the programme selector back to the original programme, the 🔒 symbol is lit again.

Add laundry

YES + 🕒 in the display panel If you want to add additional items of laundry after the programme has started, press the ▶️ Start/Reload button. The machine checks whether adding laundry is possible.

YES + 🕒 are lit: Adding laundry is possible.

NO flashing: Wait until YES + 🕒 are lit.

Note: Only open the washing machine door when **both** the YES + 🕒 symbols are lit.

NO: It is not possible to add laundry.

Note: for safety reasons, the washing machine door remains locked when the water level and/or temperature is high, or during spinning.

To continue the programme, press the ▶️ Start/Reload button.

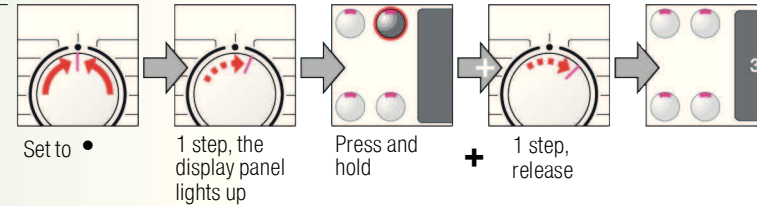
Energy saving mode

If the washing machine is switched on and is not operated for several minutes before the programme starts or at the end of the programme, the display panel light goes out and the ▶️ Start/Reload button flashes. Press any button to turn the light back on.

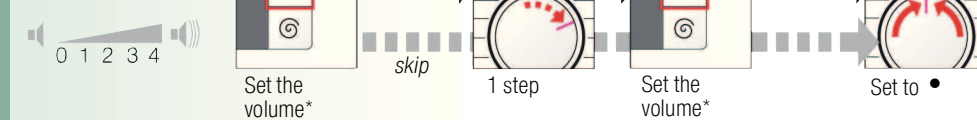
Individual settings

Signal

1. Activate the setting mode for signal volume



2. Set the volume for ...



* you may need to select the function several times

▶️ Start/Reload

To start the programme or to subsequently load additional laundry, and to activate/deactivate the childlock.

Overview of programmes → Check the consumption values table on page 8 and the instructions on page 9.



Additional functions; options; information

Type of laundry

max.

Programmes

°C

Programmes	°C	max.	Type of laundry	Additional functions; options; information
Cottons + Prewash	** - 90 °C	8 kg/ 5 kg*	Hard-wearing fabrics, heat-resistant fabrics made of cotton or linen	Speed Perfect* , Eco Perfect , Easy Iron , Rinse Plus , (Rinse hold)
Hygiene	** - 60 °C		Hard-wearing fabrics made of cotton or linen	Speed Perfect* , Eco Perfect , Easy Iron , Rinse Plus , (Rinse hold); for particularly sensitive skin, longer wash cycle at selected temperature, higher water level, additional rinse cycle
Easy-Care + Prewash	** - 60 °C	4 kg	Easy-care fabrics made of cotton, linen, synthetic fibres or blended fabrics	Speed Perfect , Eco Perfect , Easy Iron , Rinse Plus , (Rinse hold)
Mix	** - 40 °C	3.5 kg	Fabrics made of cotton or easy-care fabrics	Speed Perfect , Eco Perfect , Easy Iron , Rinse Plus , (Rinse hold); different types of laundry can be washed together
Easy-Care+	** - 40 °C		Dark-coloured fabrics made of cotton and dark easy-care fabrics	Speed Perfect , Eco Perfect , Easy Iron , Rinse Plus , (Rinse hold); reduced rinse and final spin
Delicate/Silk	** - 40 °C		For delicate, washable fabrics, e.g. made of silk, satin, synthetic fibres or blended fabrics (e.g. curtains)	Speed Perfect , Eco Perfect , Easy Iron , Rinse Plus , (Rinse hold); no spin between the rinse cycles
Wool	** - 40 °C	2 kg	Hand or machine-washable fabrics made of wool or containing wool	(Rinse hold); Particularly gentle wash programme to prevent shrinkage of laundry. Longer programme pauses (fabrics rest in the detergent solution)
SuperQuick 15'	** - 40 °C		Easy-care fabrics made of cotton, linen, synthetic fibres or blended fabrics	(Rinse hold); Short programme, approx. 15 minutes, suitable for lightly soiled laundry
Sportswear	** - 40 °C		Fabrics made from microfibre	Speed Perfect , Eco Perfect , Easy Iron , Rinse Plus , (Rinse hold); Do not treat laundry with fabric softener

Additional programmes

* reduced load for additional **Speed Perfect** function.

i As a **short programme**, **Mix** **40 °C** is ideal, when **maximum spin speed** is selected.

Programmes without prewash - add detergent to compartment **II**, programmes with prewash - distribute the detergent between compartments **I** and **II**.

Rinse , Spin , Drain , Gentle Spin

9302 / 9000770488



WAS28448SG

Robert Bosch Hausgeräte GmbH
Carl-Wery-Str. 34
81739 München / Deutschland



Safety instructions

- Read the Instruction Manual and Installation Instructions and all other information enclosed with the washing machine and use the machine accordingly.
- Retain the documents for subsequent use.

Risk of electric shock

- Never pull on the cable to disconnect the mains plug.
- Only insert/pull out the mains plug with dry hands.

Danger to life

- For worn-out appliances:
- Disconnect the mains plug.
 - Cut through the mains cable and remove complete with plug.
 - Destroy the lock on the washing machine door. This will prevent children from locking themselves in and risking their lives.

Danger of suffocation

- Keep packaging, film and packaging parts out of the reach of children.

Risk of poisoning

- Keep detergents and care products out of the reach of children.

Risk of explosion

- Items of laundry pretreated with cleaning agents containing solvents, e.g. stain remover/cleaning solvent may cause an explosion after being loaded into the washing machine.
Rinse items of laundry thoroughly by hand beforehand.

Risk of injury

- The washing machine door can become very hot.
- Be careful when draining hot detergent solution.
- Do not climb onto the washing machine.
- Do not lean on the open washing machine door.
- Do not reach into the drum if it is still rotating.

Consumption values *depending on model*

Programme	Load	Power***	Water***	Programme duration***
Cottons 30 °C*	8 kg	0,35 kWh	76 l	2¼ h
Cottons 40 °C*	8 kg	0,97 kWh	76 l	2¾ h
Cottons 60 °C*	8 kg	1,36 kWh	76 l	2¾ h
Cottons 90 °C	8 kg	2,34 kWh	87 l	2 ½ h
Easy-Care 40 °C*	4 kg	0,71 kWh	62 l	2 h
Mix 40 °C*	3,5 kg	0,47 kWh	49 l	1 h
Delicate/Silk 30 °C	2 kg	0,14 kWh	35 l	¾ h
Wool 30 °C	2 kg	0,16 kWh	40 l	¾ h

* Programme setting for testing in accordance with applicable standard EN60456.
Note on comparative tests: When testing the test programmes, wash the specified load using the maximum spin speed.

Programme	Additional function	Load	Annual energy consumption	Annual water consumption
Cottons 40/60 °C	EcoPerfect **	8/4 kg	189 kWh	10500 l

** Programme setting for testing and energy labelling in accordance with EU directive 2010/30/EU with cold water (15 °C).
*** The values deviate from the indicated values depending on water pressure, water hardness, and water inlet temperature, ambient temperature, type, amount and soiling of the laundry, detergent used, fluctuations in the power supply and selected additional functions.

The programme used for the evaluation of the captioned model under the Mandatory Water Efficiency Labelling Scheme (MWELS) is as follow: Cottons 60°C + EcoPerfect



Important information



Before washing for the first time

- Do not put any laundry in the machine. Turn the tap on. Pour the following into compartment II:
- approx. **1 litre** water
 - detergent (amount to be used according to the manufacturer's instructions for light soiling and according to water hardness)
- Turn the programme selector to **Easy-Care** **60 °C** and press **Start/Reload**.
At the end of the programme, turn the programme selector to **Off**.



Protecting the laundry and the machine

- When measuring detergent, care products and cleaning agents, follow the manufacturer's instructions.
- Empty pockets.
- Look out for metal items (paperclips, etc.).
- Wash delicates in a laundry bag (tights, curtains, underwired bras).
- Fasten zips, do up any buttons.
- Brush sand out of pockets and collars.
- Remove curtain fittings or place in the laundry bag.



Loading laundry

Insert items of laundry of varying sizes.
Take care not to trap items of laundry between the washing machine door and the rubber seal.



Laundry with varying degrees of soiling

- light Wash new items of clothing separately.
No prewash. If required, select the additional **Speed Perfect** function.
- medium Pretreat any stains as necessary.
- heavy Do not load as much laundry. Select the programme with Prewash.



Soaking

Load laundry of the same colour.

Pour soaking agent/detergent into compartment II in accordance with the manufacturer's instructions. Set the programme selector to **Cottons** **30 °C** and select **Start/Reload**. After approx. 10 minutes, press **Start/Reload** to stop the programme. After the required soaking time, press **Start/Reload** again to continue the programme, or change the programme.



Starching

Laundry must not be treated with fabric softener

Starching is possible in all wash programmes if liquid starch is used. Pour starch into the fabric softener compartment in accordance with the manufacturer's instructions (rinse first if necessary).



Dyeing/bleaching


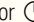
Dye should only be used in normal household quantities. Salt may damage stainless steel. Always follow the dye manufacturer's instructions. Do **not** use the washing machine for bleaching clothes.

Insert for liquid detergent *depending on model*

Position the insert for dispensing liquid detergent:

- Remove the detergent drawer completely → *page 10*.
- Slide the insert forwards.

Do not use the insert (slide upwards):

- For gel-type detergents and washing powder,
- for programmes with **+ Prewash**  or  (Finished in) option



Care



- **Risk of electric shock.** *Disconnect the mains plug.*
- **Risk of explosion.** *No solvents.*

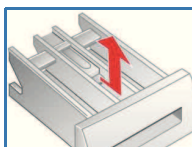
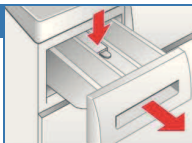
Machine housing, control panel


- Remove detergent residue immediately.
- Wipe with a soft, damp cloth.
- Do not clean with a jet of water.

Cleaning the detergent drawer ...

... if it contains detergent or fabric softener residues.

1. Pull out, press insert down, remove drawer completely.
2. To remove the insert: press the insert upwards from below with your finger.
3. Clean the detergent dispenser tray and insert with water and a brush and dry it.
4. Fit the insert and lock it in place (push the cylinder onto the guide pin).
5. Push in the detergent drawer.



 Leave the detergent drawer open so that any residual water can evaporate.

Drum


Leave the washing machine door open so that the drum can dry out. Use chlorine-free cleaning agent, not steel wool.

Descaling

Ensure there is no laundry in the machine

This should not be necessary if the correct detergent dosage has been used. If it is necessary, however, proceed according to the descaling agent manufacturer's instructions. Suitable descalers can be obtained via our website or from our after-sales service (→ *page 13*).

Instructions in the display panel *depending on model*

 flashing	Close the washing machine door properly; laundry may be caught.
E: 17, 29	Open the tap completely, supply hose kinked or trapped; Clean the filter → <i>page 11</i> , water pressure too low.
E: 18	Detergent solution pump blocked; Clean the detergent solution pump → <i>page 11</i> . Drain hose/waste pipe blocked; Clean the drain hose on the siphon → <i>page 11</i> .
E: 23	Water in the base tub, appliance leaking. Call the after-sales service.
Other displays	Switch off the appliance, wait for 5 seconds and switch it back on. If the display appears again, call the after-sales service → <i>page 13</i> .

Information about blockages



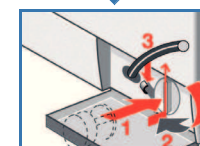
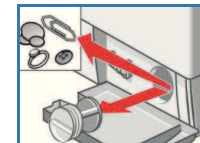
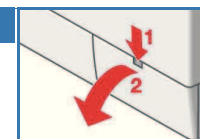
- Risk of scalding.**
- Allow the detergent solution to cool down.
 - Turn off the tap.



Detergent solution pump

Turn the programme selector to **Off** and disconnect the mains plug.

1. Open and remove the service flap.
2. Take the drain hose out of the retainer. Remove the sealing cap, allow the detergent solution to flow out. Push the sealing cap back on.
3. Unscrew the pump cover carefully (residual water).
4. Clean the interior, pump cover thread and pump housing (the impeller in the detergent solution pump must be able to rotate).
5. Replace the pump cover and screw it on tightly. The handle points upright. Replace the drain hose in the holder.
6. Refit the service flap and close it.



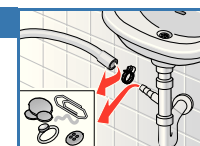
 To prevent unused detergent from flowing straight into the drain during the next wash: Pour 1 litre of water into compartment **II** and start the **Drain**  programme.



Drain hose on the siphon

Turn the programme selector to **Off** and disconnect the mains plug.

1. Loosen the hose clamp, remove the drain hose carefully (residual water).
2. Clean the drainage hose and siphon connecting piece.
3. Reattach the drainage hose and secure the connection with the hose clamp.

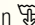




Filter in the water supply

Risk of electric shock

Do not immerse the AquaStop safety device in water (contains electric valve).

Reduce the water pressure in the supply hose:

1. Turn off the tap.
2. Select any programme (except Spin  / Drain .
3. Press  **Start/Reload**. Let the programme run for approximately 40 seconds.
4. Turn the programme selector to **Off**. Disconnect the mains plug.

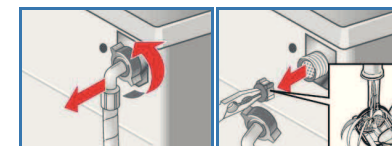
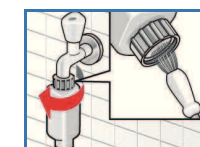
Clean the filter:

5. Disconnect the hose from the tap. Clean the filter with a small brush.

and/or on standard and Aquasecure models:

Remove the hose from the back of the appliance, remove the filter using pliers and clean the filter.

6. Connect the hose and check for leaks.



What to do if...

Water is leaking out.	<ul style="list-style-type: none"> - Attach/replace the drain hose correctly. - Tighten the screw connection of the supply hose.
No water supply. Detergent not dispensed.	<ul style="list-style-type: none"> - Start/Reload not pressed? - Tap not turned on? - Filter blocked? Clean the filter → <i>page 11</i>. - Supply hose kinked or trapped?
Washing machine door cannot be opened.	<ul style="list-style-type: none"> - Safety function active. Programme stopped? → <i>page 4</i>. - (Rinse hold = no final spin) selected? → <i>page 3, 4</i>. - Can be opened by emergency release only? → <i>page 13</i>.
Programme does not start.	<ul style="list-style-type: none"> - Start/Reload pressed or (Finished in) time selected? - Washing machine door closed? - Childlock active? Deactivate → <i>page 5</i>.
Detergent solution does not drain.	<ul style="list-style-type: none"> - (Rinse hold = no final spin) selected? → <i>page 3, 4</i>. - Clean the detergent solution pump → <i>page 11</i>. - Clean the waste pipe and/or drainage hose.
Water not visible in the drum.	<ul style="list-style-type: none"> - Not a fault - water below the visible area.
Spin result not satisfactory. Laundry wet/too damp.	<ul style="list-style-type: none"> - Not a fault - the imbalance monitoring system has interrupted the spin because the laundry is unevenly distributed. Distribute large and small items of laundry evenly in the drum. - Easy Iron pressed? → <i>page 5</i>. - Speed selected too low? → <i>page 5</i>.
The programme duration changes during the washing cycle.	<ul style="list-style-type: none"> - Not a fault - the programme sequence is optimised for the relevant washing process. This can cause changes in the programme duration in the display panel.
Repeated spin start-up.	<ul style="list-style-type: none"> - Not a fault - imbalance monitoring system is equalising the imbalance.
Residual water in the compartment for care products.	<ul style="list-style-type: none"> - Not a fault - the action of the care product is not affected. - Clean the insert if necessary → <i>page 10</i>.
Odour formation in the washing machine.	<ul style="list-style-type: none"> - Run the Cottons 90 °C programme with the washing machine empty. Use standard detergent.
Status indicator flashing. Detergent may escape from the detergent drawer.	<ul style="list-style-type: none"> - Too much detergent used? Mix 1 tablespoon of fabric softener with ½ litre water and pour the mixture into compartment II. (<i>Not for outdoor textiles or those made with down.</i>) - Reduce the amount of detergent for the next wash cycle.
Pronounced generation of noise, vibration and “wandering” during the spin cycle.	<ul style="list-style-type: none"> - Are the appliance feet fixed? Secure appliance feet → <i>Installation instructions</i>. - Transportation safety devices removed? Remove transportation safety devices → <i>Installation instructions</i>.
Noises during spinning and draining.	<ul style="list-style-type: none"> - Clean the detergent solution pump → <i>page 11</i>.
Display panel/indicator lamps do not function during operation.	<ul style="list-style-type: none"> - Power cut? - Circuit breakers tripped? Switch circuit breakers back on or replace. - Energy saving mode active? → <i>page 5</i>. - If a fault occurs repeatedly, call the after-sales service.
Programme sequence longer than usual.	<ul style="list-style-type: none"> - Not a fault - imbalance monitoring system is equalising the imbalance by repeatedly redistributing the laundry. - Not a fault - foam detection system active - adds an additional rinse cycle.
There are detergent residues on the laundry.	<ul style="list-style-type: none"> - In isolated cases, phosphate-free detergents contain water-insoluble residues. - Select Rinse or brush down the laundry after washing.

What to do if...

<ul style="list-style-type: none"> - In Add laundry mode, Start/Reload flashes very quickly and a signal sounds. 	<ul style="list-style-type: none"> - Water level too high. Not possible to add more laundry. Close the washing machine door immediately if necessary. - Press Start/Reload to continue the programme.
<p>If you cannot correct a fault yourself (switching on/off) or a repair is required:</p> <ul style="list-style-type: none"> - Turn the programme selector to Off and pull the mains plug out of the socket. - Turn off the tap and call the after-sales service → <i>page 13</i>. 	

Emergency release *e.g. in the event of a power cut*

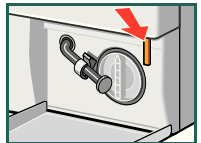


The programme continues when the power supply is restored. However, if the laundry has to be removed, the washing machine door can be opened as follows:

Risk of scalding

The detergent solution and laundry may be hot. If possible, leave to cool down. Do not reach into the drum if it is still rotating. Do not open the washing machine door if water can be seen through the glass.

1. Turn the programme selector to **Off** and pull out the mains plug.
2. Drain the detergent solution → *page 11*.
3. Pull the emergency release downwards with a tool and release. Washing machine door can then be opened.



After-sales service

- If you cannot remedy the fault yourself (What to do if ..., → *page 12, 13*), contact our after-sales service. We will always find a suitable solution to avoid unnecessary visits by repair personnel.
- You can find the contact details for your nearest after-sales service here or in the after-sales service directory (depending on the model).
 - **GB** 0844 8928979 (Calls from a BT landline will be charged at up to 3 pence per minute. A call set-up fee of up to 6 pence may apply).
 - **IE** 01450 2655
- Please give the after-sales service the product number (E-Nr.) and the production number (FD) of the appliance.

E-Nr. _____ FD _____

Product number

Production number

This information can be found: on the inside of the washing machine door / open service flap* and on the rear of the appliance. *depending on the model*

- **Trust the manufacturer's technical expertise.** Turn to us. By doing so, you will ensure that the repair is carried out by trained service technicians equipped with original spare parts



en Instruction manual