

# Your washing machine

**Congratulations** – You have opted for a modern, high-quality domestic appliance manufactured by Bosch. The washing machine is distinguished by its economical consumption of water and energy. Each appliance which leaves our factory is inspected thoroughly to ensure that it functions properly and is in perfect condition.

Further information on our products, accessories, spare parts and services can be found at: [www.bosch-home.com](http://www.bosch-home.com) or contact our customer service centres.

## Contents

Intended use.....	1
Programmes.....	1
Selecting and adjusting a programme.....	3
Washing.....	3/4
After washing.....	4
Individual settings.....	5
Important information.....	6
Emergency lock release.....	6
Overview of programmes.....	7
Safety instructions.....	8
Consumption values.....	8
Insert for liquid detergent.....	9
Care.....	9
Information on the display panel.....	9
Information on blockage.....	10
What to do if.....	11

## Protection of the environment/Conservation tips

- Utilise the maximum amount of washing for the particular programme.
- Wash normally soiled washing without prewash.
- Instead of the **Cottons 90 °C** programme, select **Cottons Eco 60 °C** and **Eco\*** additional function. Comparable cleaning result with significantly lower energy consumption.
- Measure detergent according to the manufacturer's instructions and water hardness.
- If the washing is then dried in the tumble dryer, select spin speed according to the instructions of the dryer manufacturer.

## Intended use

- for use in the household only,
  - for washing machine-washable textiles and hand-washable wool in wash liquor,
  - to be operated with cold drinking water and commercially available detergents and care products which are suitable for use in washing machines.
- ! Follow the safety instructions on Page 8!**
- Do not leave children unattended near the washing machine!
  - Children and un instructed persons must not use the washing machine!
  - Keep pets away from the washing machine!

Do not switch on the washing machine until you have read these instructions and the separate Installation/Maintenance instructions!

**Programmes**  
For detailed overview of programmes → Page 7.  
Temperature and spin speed can be selected individually irrespective of the selected programme and programme progress.

<b>Cottons</b>	hard-wearing textiles
<b>Cottons Eco</b>	hard-wearing textiles
<b>Easy-Care</b>	for easy-care textiles
<b>Mixed Load</b>	different types of washing
<b>Delicates/Silk</b>	for easy-care, washable textiles
<b>Wool</b>	hand/machinewashable textiles
<b>Rinse</b>	with subsequent spin cycle
<b>Spin</b>	extra spin with variable spin speed
<b>Drain</b>	the rinsing water when  is activated (rinse stop = without final spin)
<b>Gentle Spin</b>	washing washed by hand; gentler spin cycle
<b>Super Quick</b>	extra short programme
<b>Power Wash</b>	hard-wearing textiles
<b>Sensitive</b>	Hard-wearing fabrics; longer washing and rinsing at a higher water level for particularly sensitive skin
<b>Sportswear</b>	textiles made of microfibres
<b>Dark Wash</b>	dark textiles

## Preparation

**! Correct installation according to separate installation instructions.**

**Checking the machine**  
– Never switch on a damaged machine!  
– Inform your customer service!

**Insert mains plug**  
– With dry hands only!  
– Take hold of the plug only!

**Turn on the tap**

## Sorting and inserting the washing

Follow manufacturer's care information! According to the information on the care labels. According to type, colour, soiling and temperature. Do not exceed maximum load. → Page 6

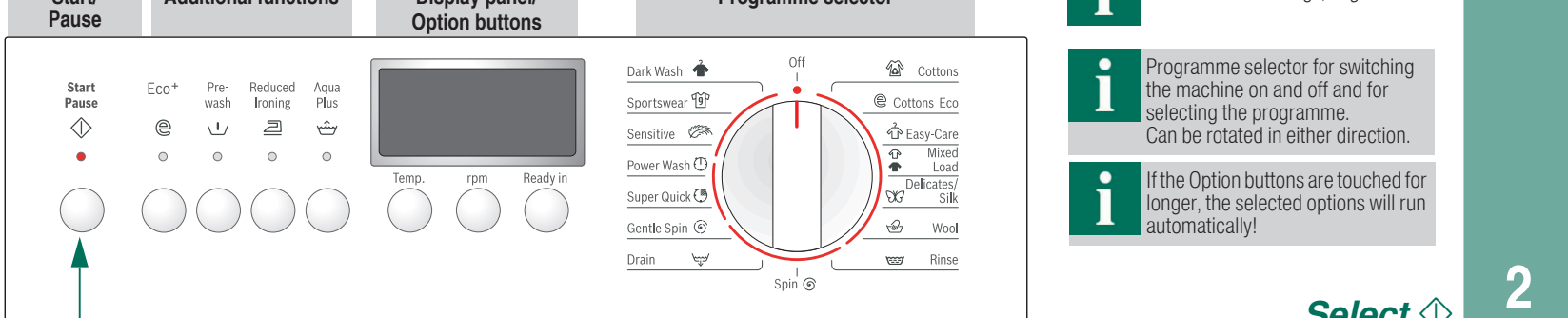
Follow important instructions. → Page 6  
Insert large and small items of washing! Close the washing machine door.  
Do not jam items of washing between the washing machine door and rubber seal.

**Add detergent and care product**  
Dose according to: amount of washing, soiling, water hardness (available from your water utility company) and manufacturer's instructions.  
For models without insert for liquid detergent: Pour liquid detergent into corresponding dispenser and place in drum. Caution when opening the detergent drawer while the appliance is running!

**! Dilute viscous fabric softener and fabric conditioner with water. Prevents blockage of the overflow.**

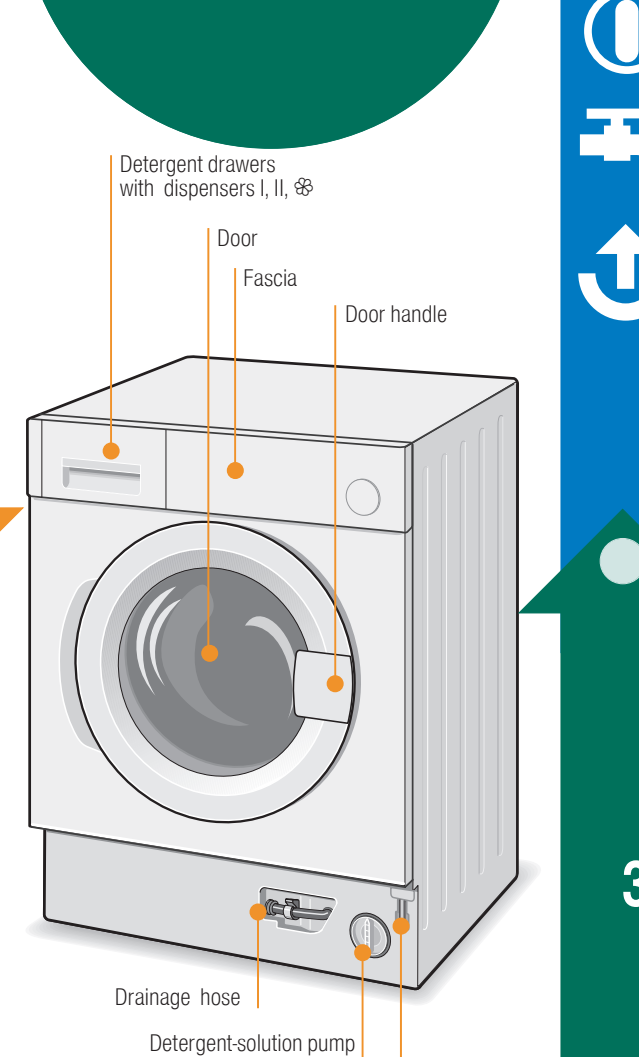


## Setting programmes



	90 °C	<b>Temp.</b> (°C)	Select the temperature (* = cold)
	1400 *	<b>rpm</b> (⊙)	Select the spin speed (* depending on model) or  (rinse stop = without final spin, the washing remains in the water after the last rinse cycle).
	1 - 24 h	<b>Ready in</b> (⌚)	Programme ends in ...
Status displays		Programme progress displays:	
			- G -
		Washing, Rinse, Spin, programme duration or end (- G -)	

## Washing



## Switching off

Turn the programme selector to **Off**.

**Turn off tap**  
Not required for Aqua-Stop models. → Information, Installation Instructions

**Remove the washing**  
Open washing machine door and remove washing. If (rinse stop = without final spin) active: Set programme selector to **Drain** or **Spin**. Select **Start/Pause**.

**! Remove any foreign objects – risk of rusting. Leave detergent drawer and door open so that residual water can evaporate.**

**End of programme when ...**  
... - G - is indicated on the display panel.

**Terminating the programme**  
For programmes at high temperature:  
– Cool washing: select **Rinse**.  
– Select **Start/Pause**.  
For programmes at low temperature:  
– Select **Spin** or **Drain**.  
– Select **Start/Pause**.

**Change programme if ...**  
... you have mistakenly selected a wrong programme:  
– Reselect programme.  
– Select **Start/Pause**.  
The new programme starts from the beginning.

**Cancel Programme**  
– Select **Start/Pause**.  
– If required, top up washing (do not leave door open for a long time – water from the washing could run out of the open door).  
– Select **Start/Pause**.

## Individual settings

**Option buttons**  
You can change the spin speed and temperature beforehand and while the selected programme is running. Effects dependent on the programme progress.

**Temp. °C**  
You can change the indicated washing temperature. The maximum washing temperature which can be selected depends on the set programme.

**⊙ (rpm=Spin speed, revolutions per minute) / (Rinse stop = without final spin)**  
You can change the indicated spin speed or select (rinse stop = without final spin cycle, washing remains in the water after the last rinse cycle). The selectable maximum spin speed depends on the model and the selected programme.

**⌚ Ready in**  
The respective programme duration is displayed by selecting the programme. The programme start can be delayed before the programme begins. The ⌚ (Ready in) time can be set in hour steps up to maximum 24h. Keep pressing the ⌚ (Ready in) button until the required number of hours is indicated (h=hour). Select **Start/Pause**. Settings cannot be made when the programme has started.

**Additional functions** → Overview of programmes, Page 7

**Eco\*** Extension of the washing time for a more intensive washing of highly soiled washing.

**Prewash** For heavily soiled washing. Prewash at 30 °C.

**Reduced Ironing** Special spin sequence with subsequent fluffing. Gentle final spin at reduced spin speed. Residual moisture of the washing slightly increased.

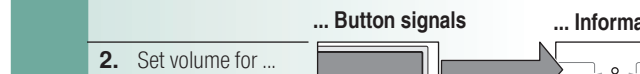
**Aqua Plus** Increased water level. Additional rinse cycle. Longer programme duration. For areas with very soft water or for further improvement of the rinsing result.

**Start/Pause**  
For starting or interrupting the programme.

**Signal**  
1. Activate setting mode for signal volume



2. Set volume for ...



\* If required, select repeatedly

## Important information

**! Before using your washing machine for the first time**  
Do not put any washing in the washing machine! Turn the tap on. Pour into dispenser II:  
– Approx. **1 litre** water.  
– Detergent (dosage according to manufacturer's instructions for light soiling and according to degree of water hardness).  
– Set programme selector to **Easy-Care 60 °C** and select **Start/Pause**.  
At the end of the programme set the programme selector to **Off**.

**Protecting the washing and the machine**  
– When dosing all detergents, cleaning aids and cleaning agents, always follow the manufacturer's instructions.  
– Empty pockets.  
– Remove metal parts (paper clips, etc.).  
– Wash delicates in the net/bag (lights, curtains, underwired bras).  
– Close zips, button up covers.  
– Brush sand out of pockets and collars.  
– Remove curtain fittings or include in the net/bag.

**Insert laundry**  
Insert large and small items of washing!  
Do not jam items of washing between the washing machine door and rubber seal.

**Washing with different degrees of soiling**  
Wash new items separately.

Light	Do not prewash.
	If required, pretreat stains. Select <b>Eco*</b> additional function.
Heavy	Load less washing. Select programme with <b>Prewash</b> . If required, pretreat stains. Select <b>Eco*</b> additional function.

**Soaking**  
Load washing of the same colour.  
Pour soaking agent/detergent into dispenser II according to the manufacturer's instructions. Set programme selector to **Cottons 30 °C** and select **Start/Pause**. After approx. 10 minutes select **Start/Pause** to stop the programme. After the required soaking time reselect **Start/Pause** if the programme is to be continued or change the programme.

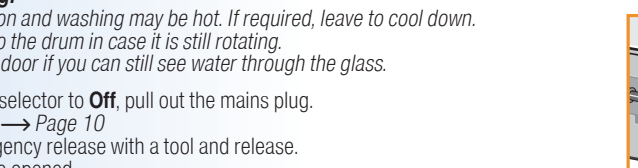
**Starching**  
Washing should not be treated with fabric softener.  
Liquid starch can be used in all wash programmes. Pour starch into the fabric softener dispenser according to manufacturer's specifications (if required clean beforehand).

**Dyeing/Bleaching**  
Dye in household quantities only. Salt may attack stainless steel! Observe specifications of the dye manufacturer!  
**Do not bleach washing in the washing machine!**

**Emergency release** e.g. if power failure occurs  
The programme continues running when the power supply is restored. If the washing is still to be removed, the door can be opened as described below.

**Risk of scalding!**  
Detergent solution and washing may be hot. If required, leave to cool down. Do not reach into the drum in case it is still rotating. Do not open the door if you can still see water through the glass.

- Set programme selector to **Off**, pull out the mains plug.
- Drain the water. → Page 10
- Pull down emergency release with a tool and release. Door can then be opened.





Programme	°C	max.	Type of washing
👕 Cottons	⊖ - 90 °C		Hard-wearing textiles, heat-resistant textiles made of cotton or linen
👕 Cottons Eco	⊖ - 60 °C	7 kg*	
👕 Sensitive	⊖ - 60 °C		
🌀 Power Wash	⊖ - 60 °C	5 kg	Hardwearing textiles made of cotton or blended fabrics
👕 Easy-Care	⊖ - 60 °C		Easy-care textiles made of cotton, linen, synthetic fibres or blended fabrics
👕 Mixed Load	⊖ - 40 °C	3,5 kg*	Textiles made of cotton or easy-care textiles
👕 Dark Wash	⊖ - 40 °C		Dark textiles made of cotton and dark easy-care textiles
👕 Delicates/Silk	⊖ - 40 °C		For delicate, washable textiles, e.g. made of silk, satin, synthetic fibres or blended fabrics
👕 Sportswear	⊖ - 40 °C	2 kg	Textiles for outdoor wear
👕 Wool	⊖ - 40 °C		Hand or machine-washable wool or rich-wool textiles
👕 Super Quick	⊖ - 40 °C		Easy-care textiles made of cotton, linen, synthetic fibres or blended fabrics

🌀 Rinse, 🌀 Spin, 🌀 Drain, 🌀 Gentle Spin

The programmes are time-controlled for lightly soiled textiles. If textiles are heavily soiled, reduce the load or select additional function, e.g. @ Eco\*. Especially gentle wash programme to prevent shrinkage, longer programme. When washing at maximum load using programmes marked with \*, always select @ Eco\* additional function. Irrespective of the type of washing, ⚡ Easy-Care 40 °C at max. selectable spin speed is best suited as a short programme. Programmes without Prewash - pour detergent into dispenser I, programmes with Prewash - divide detergent between dispensers I and II.

Additional functions; information

⊖ Eco\*, 🌀 Prewash, 🌀 Reduced Ironing, Aqua Plus 🌀  
 ⊖ Eco\*, 🌀 Prewash, 🌀 Reduced Ironing, Aqua Plus 🌀  
 For especially sensitive skin, extended wash cycle at selected temperature, higher water level  
 Time-controlled programme, short programme for normally soiled washing

⊖ Eco\*, 🌀 Prewash, 🌀 Reduced Ironing, Aqua Plus 🌀  
 Different types of washing can be washed together  
 Reduced rinse and final spin cycle

⊖ Eco\*, 🌀 Prewash, 🌀 Reduced Ironing, Aqua Plus 🌀  
 Especially gentle wash programme to prevent shrinkage, longer programme  
 pauses (textiles rest in wash liquor)  
 No spin cycle between the rinse cycles

⊖ Eco\*, 🌀 Prewash, 🌀 Reduced Ironing, Aqua Plus 🌀  
 Short programme approx. 15 minutes, suitable for lightly soiled washing

⊖ Eco\*, 🌀 Prewash, 🌀 Reduced Ironing, Aqua Plus 🌀  
 Short programme approx. 15 minutes, suitable for lightly soiled washing

⊖ Eco\*, 🌀 Prewash, 🌀 Reduced Ironing, Aqua Plus 🌀  
 Short programme approx. 15 minutes, suitable for lightly soiled washing

⊖ Eco\*, 🌀 Prewash, 🌀 Reduced Ironing, Aqua Plus 🌀  
 Short programme approx. 15 minutes, suitable for lightly soiled washing

⊖ Eco\*, 🌀 Prewash, 🌀 Reduced Ironing, Aqua Plus 🌀  
 Short programme approx. 15 minutes, suitable for lightly soiled washing

⊖ Eco\*, 🌀 Prewash, 🌀 Reduced Ironing, Aqua Plus 🌀  
 Short programme approx. 15 minutes, suitable for lightly soiled washing

## Safety instructions

- Read and follow the operating and installation instructions and all other information enclosed with the washing machine.
- Retain documents for subsequent use.

**Risk of electric shock**

- Never pull out the mains plug by tugging the power cord!
- Insert/pull out the mains plug with dry hands only.

**Danger to life**

On redundant appliances:

- Pull out the mains plug!
- Sever the power cord and discard together with the plug.
- Destroy the lock on the washing-machine door. This will prevent children from locking themselves in and suffocating.

**Risk of suffocation**

- Keep packaging, plastic film and packaging parts out of the reach of children.

**Risk of poisoning**

- Keep detergents and care products out of the reach of children.

**Risk of explosion**

- Caused by detergents containing solvents, e.g. stain remover/items of washing pretreated with solvent naphtha may result in an explosion after being loaded into the washing machine.
- Before hand thoroughly rinse items of washing by hand.

**Risk of injury**

- Washing machine door may become very hot.
- Caution when draining hot detergent solution.
- Do not climb on the washing machine.
- Do not lean on the open washing machine door.
- Do not reach into the drum in case it is still rotating.

## Consumption values

Programme	Additional function	Load	Current**	Water**	Programme duration**
👕 Cottons 30 °C*	@ Eco*	7 kg	0.55 kWh	75 l	2:12 h
👕 Cottons 40 °C*	@ Eco*	7 kg	0.85 kWh	75 l	2:12 h
👕 Cottons 60 °C*	@ Eco*	7 kg	1.50 kWh	75 l	2:12 h
👕 Cottons 90 °C	@ Eco*	7 kg	2.51 kWh	90 l	2:12 h
⚡ Easy-Care 40 °C*	@ Eco*	3.5 kg	0.55 kWh	55 l	1:12 h
👕 Delicates/Silk 30 °C	-	2 kg	0.20 kWh	39 l	0:40 h
👕 Wool 30 °C	-	2 kg	0.20 kWh	40 l	0:36 h

\* Programme setting for test according to currently valid European standard 60456. Information about comparability tests:  
 To test the test programmes, wash indicated load, with @ Eco\* additional function and at maximum selectable spin speed.

Programme	Additional function	Load	Annual energy consumption	Annual water consumption
@ Cottons Eco 40/60 °C	@ Eco***	7/3.5 kg	218 kWh	10560 l

\*\* Programme setting for testing and energy labelling according to directive 2010/30/EU with cold water (15 °C).  
 \*\*\* The values may deviate from the stated values depending on water pressure and hardness, room temperature, type and amount of laundry, detergents used, fluctuations in the mains voltage and selected additional functions.

## Insert for liquid detergent

depending on model

Position insert for dosing liquid detergent:  
 - Completely remove detergent drawer. → Page 10  
 - Push insert forwards.

Do not use insert (push upwards):  
 - For gel-like detergents and washing powders.  
 - For programmes with 🌀 Prewash or 🌀 (Ready in) option.

## Care

**Machine housing, control panel**

- Remove detergent residue immediately.
- Wipe with a soft, damp cloth.
- Do not clean the appliance with a water jet.

**Clean the detergent drawer ...**  
 ... if it contains detergent or fabric softener residue.

- Pull out, depress insert, take out drawer all the way.
- Take out insert: using your finger, press insert upwards.
- Clean detergent dispenser and insert with water and a brush and dry.
- Attach insert and lock into position (push cylinder onto guide pin).
- Slide in the detergent dispenser.

Leave detergent drawer open so that residual water can evaporate.

**Drum**

Leave washing machine door open so that the drum can dry out. Use chlorine-free cleaning agent, not steel wool.

**Descaling** *No washing in the machine!*

Not required if detergent dosed correctly. However, if this does occur, follow the instructions of the descaling agent manufacturer. Suitable descalers can be purchased on our website or from customer service.

## Information on the display panel

depending on model

F: 16	Close the washing machine door properly; washing may be caught.
F: 17, 29	Turn on tap fully, supply hose kinked/jammed; clean filter → Page 10, water pressure too low.
F: 18	Drain pump blocked; clean drain pump. → Page 10 Drainage hose/outlet pipe blocked; clean drainage hose on the siphon. → Page 10
F: 23	Water in the base pan, appliance leaking. Call customer service!
F: 42, 43, 44	Motor fault. Call customer service. → Installation Instructions

**Other displays**

Switch off appliance, wait 5 seconds and switch on again. If the display is indicated again, call customer service. → Installation Instructions

## Maintenance

**Detergent-solution pump**

Set programme selector to **Off**, pull out the mains plug.

- Take the drainage hose out of the holder. Remove sealing cap, allow detergent solution to flow out. Put the closing cap back on the hose.
- Carefully unscrew the pump cover (residual water).
- Clean the interior, pump cover thread and pump housing (fan impeller in the detergent-solution pump must rotate).
- Reinsert and screw on pump cover. Handle is upright. Insert the drain hose into the holder.

**Drainage hose on the siphon**

Set programme selector to **Off**, pull out the mains plug.

- Loosen hose clip, carefully remove drainage hose (residual water).
- Clean drainage hose and siphon spigot.
- Re-attach drainage hose and secure connection point with hose clip.

**Filter in the water inlet hose**

**Risk of electric shock!**  
 Do not immerse Aqua-Stop safety device in water (contains electric valve).

Release water pressure in the supply hose:

- Turn off the tap!
- Select any programme (except 🌀 Spin/🌀 Drain).
- Select 🌀 Start/Pause. Leave programme for approx. 40 seconds.
- Turn the programme selector to **Off**. Pull out the mains plug.

Clean the filter:

- Disconnect the hose from the water tap. Clean filter with small brush.

**and/or** for standard and Aqua-Secure models: remove hose from the rear of the appliance, take out filter with pliers and clean.

- Connect the hose and check for leaks.

## What to do if ...

Water is running out.	- Correctly attach/replace drainage hose. - Tighten screw-fitting on the supply hose.
Water not flowing in. Detergent not washed in.	- 🌀 Start/Pause not selected? - Tap not open? - Filter blocked? Clean the filter. → Page 10 - Supply hose kinked or jammed?
Washing-machine door cannot be opened.	- Safety function active. Stop programme? → Page 4 - 🌀 (rinse stop = without final spin) selected? → Page 3, 4 - Can be opened via emergency release only? → Page 6
Programme does not start.	- 🌀 Start/Pause or 🌀 (Ready in) time selected? - Door closed?
Detergent solution is not drained.	- 🌀 (rinse stop = without final spin) selected? → Page 3, 4 - Clean the drain pump. → Page 10 - Clean outlet pipe and/or drainage hose.
Water not visible in the drum.	- Not a fault - water below the visible area.
Spin result not satisfactory, washing wet/too damp.	- Not a fault - unbalanced load detection system has stopped the spin cycle, washing unevenly distributed. Distribute small and large items of washing in the drum. - 🌀 Reduced Ironing selected? → Page 5 - Too low speed selected? → Page 5
The programme duration changes during the wash cycle.	- Not a fault - the programme sequence is optimised for the particular wash process. This may result in changes to the programme duration in the display field.
Spin cycle actuated several times.	- Not a fault - unbalanced load detection system adjusts imbalance.
Residual water in the dispenser for care product ☼.	- Not a fault - effect of the care product not impaired. - If required, clean insert. → Page 9
Odour formation in the washing machine.	- Run 🌀 Cottons 90 °C programme without washing. Use standard detergent.
Foam is coming out of the detergent drawer.	- Too much detergent used? - Mix 1 tablespoon of fabric softener with ½ litre of water and pour into dispenser II (not for outdoor, sports and down-filled textiles!). - Reduce detergent dosage for the next wash cycle.
Loud noise formation, vibrations and "Wandering" during spin cycle.	- Appliance feet fixed? Secure appliance feet. → Installation Instructions - Transportation protection devices removed? Remove transportation protection devices. → Installation Instructions
Noises during spin and drain cycles.	- Clean the drain pump. → Page 10
Display panel/indicator lights do not function while the appliance is running.	- Power failure? - Fuse tripped? Switch on/replace fuse. - If the fault occurs repeatedly, call customer service.
The programme takes longer than usual.	- Not a fault - unbalanced load detection system adjusts imbalance by repeatedly distributing the washing. - Not a fault - foam detection system active - a rinse cycle is switched on.
Detergent residue on the washing.	- Occasionally phosphate-free detergents contain water-insoluble residue. - Select 🌀 Rinse or brush the laundry after washing.
In the pause status 🌀 Start/Pause flashes very quickly and a signal sounds.	- Water level too high. Washing cannot be reloading. Immediately close washing machine door. - Select 🌀 Start/Pause to continue the programme.

If a fault cannot be rectified (switching the machine on and off) or a repair is required:  
 - Set programme selector to **Off** and pull out the mains plug.  
 - Turn off the tap and call customer service. → Installation Instructions

## Risk of scalding!

- Allow detergent solution to cool down!
- Turn off the tap!

To prevent unused detergent from flowing into the outlet during the next wash: Pour 1 litre of water into dispenser II and start the 🌀 Drain programme.

## Risk of electric shock!

Do not immerse Aqua-Stop safety device in water (contains electric valve).

## Risk of electric shock!

Do not immerse Aqua-Stop safety device in water (contains electric valve).

## Risk of electric shock!

Do not immerse Aqua-Stop safety device in water (contains electric valve).

## en Operating instructions

**Washing machine**

# Your washing machine

**Congratulations** – You have opted for a modern, high-quality domestic appliance manufactured by Bosch. The washing machine is distinguished by its economical consumption of water and energy. Each appliance which leaves our factory is inspected thoroughly to ensure that it functions properly and is in perfect condition.

Further information on our products, accessories, spare parts and services can be found at: [www.bosch-home.com](http://www.bosch-home.com) or contact our customer service centres.

## Contents

	Page
Intended use	1
Programmes	1
Selecting and adjusting a programme	3
Washing	3/4
After washing	4
Individual settings	5
Important information	6
Emergency lock release	6
Overview of programmes	7
Safety instructions	8
Consumption values	8
Insert for liquid detergent	9
Care	9
Information on the display panel	9
Information on blockage	10
What to do if	11



### Protection of the environment/Conservation tips

- Utilise the maximum amount of washing for the particular programme.
- Wash normally soiled washing without prewash.
- Instead of the **Cottons 90 °C** programme, select **Cottons Eco 60 °C** and **Eco+** additional function. Comparable cleaning result with significantly lower energy consumption.
- Measure detergent according to the manufacturer's instructions and water hardness.
- If the washing is then dried in the tumble dryer, select spin speed according to the instructions of the dryer manufacturer.

## Intended use

- for use in the household only,
- for washing machine-washable textiles and hand-washable wool in wash liquor,
- to be operated with cold drinking water and commercially available detergents and care products which are suitable for use in washing machines.



- Follow the safety instructions on Page 8!
- Do not leave children unattended near the washing machine!
- Children and uninstructed persons must not use the washing machine!
- Keep pets away from the washing machine!



Do not switch on the washing machine until you have read these instructions and the separate Installation/Maintenance instructions!

## Programmes

For detailed overview of programmes → Page 7. Temperature and spin speed can be selected individually irrespective of the selected programme and programme progress.

<b>Cottons</b>	hard-wearing textiles
<b>Cottons Eco</b>	hard-wearing textiles
<b>Easy-Care</b>	for easy-care textiles
<b>Mixed Load</b>	different types of washing
<b>Delicates/Silk</b>	for easy-care, washable textiles
<b>Wool</b>	hand/machinewashable textiles
<b>Rinse</b>	with subsequent spin cycle
<b>Spin</b>	extra spin with variable spin speed
<b>Drain</b>	the rinsing water when  is activated (rinse stop = without final spin)
<b>Gentle Spin</b>	washing washed by hand; gentler spin cycle
<b>Super Quick</b>	extra short programme
<b>Power Wash</b>	hard-wearing textiles
<b>Sensitive</b>	Hard-wearing fabrics; longer washing and rinsing at a higher water level for particularly sensitive skin
<b>Sportswear</b>	textiles made of microfibres
<b>Dark Wash</b>	dark textiles

## Preparation



Correct installation according to separate installation instructions.



### Checking the machine

- Never switch on a damaged machine!
- Inform your customer service!

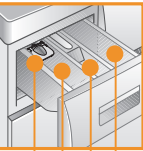


### Insert mains plug

- With dry hands only!
- Take hold of the plug only!



### Turn on the tap



Insert for liquid detergent (depending on model) → Page 9

**Dispenser II:** Detergent for main wash, water softener, bleach, stain remover

**Dispenser ⌘:** Fabric softener, starch

**Dispenser I:** Detergent for prewash

**Start/Pause**      **Additional functions**      **Display panel/Option buttons**

Start/Pause: Start/Pause

Additional functions: Eco+    Pre-wash    Reduced Ironing    Aqua Plus

Display panel/Option buttons: Temp.    rpm    Ready in

Other buttons: Dark Wash    Sportswear    Sensitive    Power Wash    Super Quick    Gentle Spin    Drain

– 90 °C	<b>Temp.</b> (°C)	Select the temperature
– 1400 *	<b>rpm</b> (⊖)	Select the spin speed without final rinse cycle).
1 – 24 h	<b>Ready in</b> (⌚)	Programme end
Status displays		Programme progress
- 0 -		Washing, Rinsing, Spinning

**Before using your washing machine for the first time**  
wash once without any washing. → Page 6

## Sorting and inserting the washing

Follow manufacturer's care information!  
According to the information on the care labels.  
According to type; colour; soiling and temperature.  
Do not exceed maximum load. → Page 7

Follow important instructions. → Page 6

Insert large and small items of washing!  
Close the washing machine door.

Do not jam items of washing between the washing machine door and rubber seal.

## Add detergent and care product

Dose according to:

amount of washing, soiling, water hardness (available from your water utility company) and manufacturer's instructions.

For models without insert for liquid detergent:

Pour liquid detergent into corresponding dispenser and place in drum.  
Caution when opening the detergent drawer while the appliance is running!

**i** Dilute viscous fabric softener and fabric conditioner with water.  
Prevents blockage of the overflow.

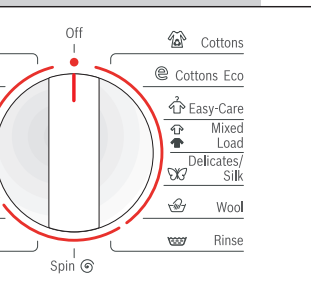
## Setting programmes

**i** Additional functions and option buttons  
→ Individual settings, Page 5

**i** Programme selector for switching  
the machine on and off and for  
selecting the programme.  
Can be rotated in either direction.

**i** If the Option buttons are touched for  
longer, the selected options will run  
automatically!

### Programme selector



temperature (\* = cold)

in speed (\* depending on model) or (rinse stop =  
spin, the washing remains in the water after the last

ends in ...

progress displays:

use, Spin, programme duration or end (- -)

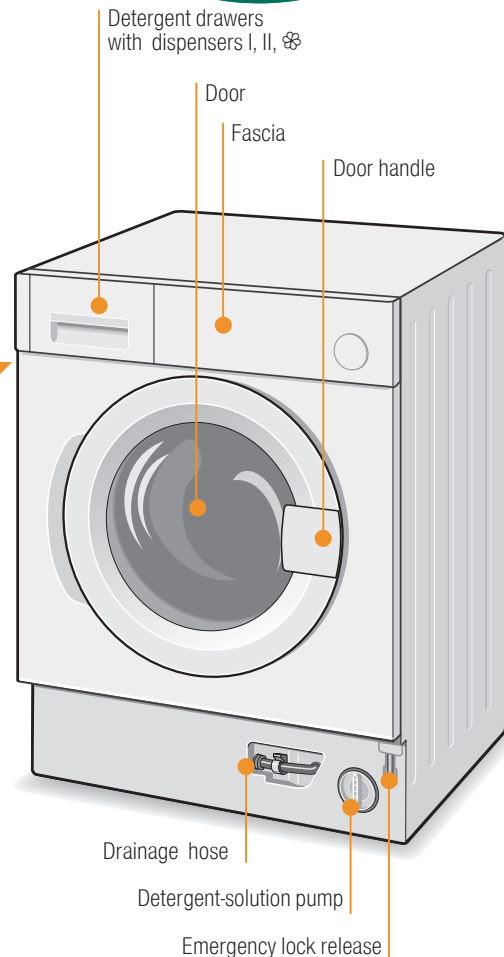
# Washing



1

2

Select **Start/Pause**



## Switching off

Turn the programme selector to **Off**.

## Turn off tap

Not required for Aqua-Stop models.  
→ Information, Installation Instructions

## Remove the washing

Open washing machine door and remove washing.  
If (rinse stop = without final spin) active: Set programme selector to **Drain** or **Spin**. Select **Start/Pause**.



- Remove any foreign objects – risk of rusting.
- Leave detergent drawer and door open so that residual water can evaporate.

## End of programme when ...

... - - is indicated on the display panel.

## Terminating the programme

For programmes at high temperature:

- Cool washing: select **Rinse**.
- Select **Start/Pause**.

For programmes at low temperature:

- Select **Spin** or **Drain**.
- Select **Start/Pause**.

## Change programme if ...

... you have mistakenly selected a wrong programme:

- Reselect programme.
- Select **Start/Pause**.
- The new programme starts from the beginning.

## Cancel Programme

- Select **Start/Pause**.
- If required, top up washing (do not leave door open for a long time – water from the washing could run out of the open door).
- Select **Start/Pause**.

# Washing

# Individual settings

## Option buttons

You can change the spin speed and temperature beforehand and while the selected programme is running. Effects dependent on the programme progress.

## Temp. °C

You can change the indicated washing temperature. The maximum washing temperature which can be selected depends on the set programme.

## ⌚ (rpm=Spin speed, revolutions per minute) / ☐ (Rinse stop = without final spin)

You can change the indicated spin speed or select ☐ (rinse stop = without final spin cycle, washing remains in the water after the last rinse cycle).

The selectable maximum spin speed depends on the model and the selected programme.

## ⌚ Ready in

The respective programme duration is displayed by selecting the programme. The programme start can be delayed before the programme begins. The ⌚ (Ready in) time can be set in hour steps up to maximum 24h.

Keep pressing the ⌚ (Ready in) button until the required number of hours is indicated (h=hour). Select ◊ Start/Pause. Settings cannot be made when the programme has started.

## Additional functions → Overview of programmes, Page 7

**Eco+** Extension of the washing time for a more intensive washing of highly soiled washing.

**Prewash** ☒ For heavily soiled washing. Prewash at 30 °C.

**Reduced Ironing** ☒ Special spin sequence with subsequent fluffing. Gentle final spin at reduced spin speed. Residual moisture of the washing slightly increased.

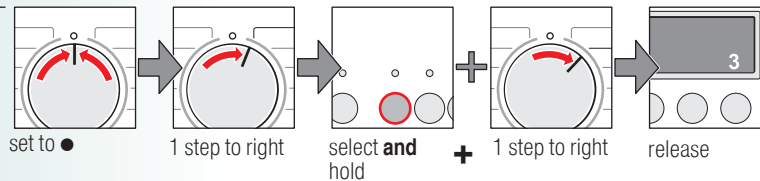
**Aqua Plus** ☒ Increased water level. Additional rinse cycle. Longer programme duration. For areas with very soft water or for further improvement of the rinsing result.

## ◊ Start/Pause

For starting or interrupting the programme.

## Signal

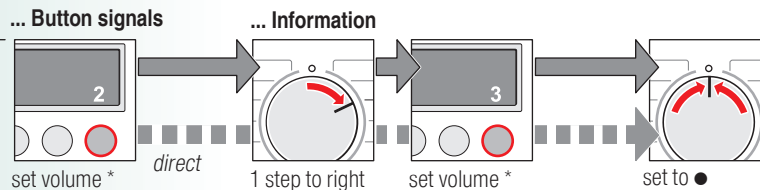
1. Activate setting mode for signal volume



2. Set volume for ...



\* If required, select repeatedly



# Important information



## Before using your washing machine for the first time

Do not put any washing in the washing machine! Turn the tap on. Pour into dispenser II:

- Approx. **1 litre** water.
- Detergent (dosage according to manufacturer's instructions for light soiling and according to degree of water hardness).
- Set programme selector to **Easy-Care 60 °C** and select ◊ Start/Pause. At the end of the programme set the programme selector to **Off**.



## Protecting the washing and the machine

- When dosing all detergents, cleaning aids and cleaning agents, always follow the manufacturer's instructions.
- Empty pockets.
- Remove metal parts (paper clips, etc.).
- Wash delicates in the net/bag (tights, curtains, underwired bras).
- Close zips, button up covers.
- Brush sand out of pockets and collars.
- Remove curtain fittings or include in the net/bag.



## Insert laundry

Insert large and small items of washing!

Do not jam items of washing between the washing machine door and rubber seal.



## Washing with different degrees of soiling

Wash new items separately.

Light



Do not prewash.

If required, pretreat stains. Select **Eco+** additional function.

Heavy

Load less washing. Select programme with **Prewash**.

If required, pretreat stains. Select **Eco+** additional function.



## Soaking

Load washing of the same colour.

Pour soaking agent/detergent into dispenser II according to the manufacturer's instructions. Set programme selector to **Cottons 30 °C** and select ◊ Start/Pause. After approx. 10 minutes select ◊ Start/Pause to stop the programme. After the required soaking time reselect ◊ Start/Pause if the programme is to be continued or change the programme.



## Starching

Washing should not be treated with fabric softener.

Liquid starch can be used in all wash programmes. Pour starch into the fabric softener dispenser ☒ according to manufacturer's specifications (if required clean beforehand).



## Dyeing/Bleaching

Dye in household quantities only. Salt may attack stainless steel! Observe specifications of the dye manufacturer! **Do not** bleach washing in the washing machine!



## Emergency release e.g. if power failure occurs

The programme continues running when the power supply is restored.

If the washing is still to be removed, the door can be opened as described below:



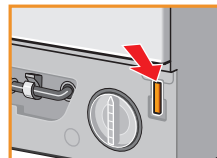
### Risk of scalding!

Detergent solution and washing may be hot. If required, leave to cool down.

Do not reach into the drum in case it is still rotating.

Do not open the door if you can still see water through the glass.

1. Set programme selector to **Off**, pull out the mains plug.
2. Drain the water. → Page 10
3. Pull down emergency release with a tool and release. Door can then be opened.



# Overview of programmes

→ Observe table of consumption values on Page 8 and instructions on Page 6!



**Programmes**    °C    max.    Type of washing

**Additional functions; information**

<b>Cottons</b>	** - 90 °C			<b>@ Eco<sup>+</sup></b> , <b>↓ Prewash</b> , <b>⊳ Reduced Ironing, Aqua Plus</b>
<b>@ Cottons Eco</b>	* - 60 °C	7 kg *	Hard-wearing textiles, heat-resistant textiles made of cotton or linen	<b>@ Eco<sup>+</sup></b> , <b>↓ Prewash</b> , <b>⊳ Reduced Ironing, Aqua Plus</b> For especially sensitive skin, extended wash cycle at selected temperature, higher water level
<b>Sensitive</b>	* - 60 °C			
<b>Power Wash</b>	* - 60 °C	5 kg	Hardwearing textiles made of cotton or blended fabrics	Time-controlled programme, short programme for normally soiled washing
<b>Easy-Care</b>	* - 60 °C		Easy-care textiles made of cotton, linen, synthetic fibres or blended fabrics	<b>@ Eco<sup>+</sup></b> , <b>↓ Prewash</b> , <b>⊳ Reduced Ironing, Aqua Plus</b>
<b>Mixed Load</b>	* - 40 °C	3.5 kg *	Textiles made of cotton or easy-care textiles	<b>@ Eco<sup>+</sup></b> , <b>↓ Prewash</b> , <b>⊳ Reduced Ironing, Aqua Plus</b> Different types of washing can be washed together
<b>Dark Wash</b>	* - 40 °C		Dark textiles made of cotton and dark easy-care textiles	<b>@ Eco<sup>+</sup></b> , <b>↓ Prewash</b> , <b>⊳ Reduced Ironing, Aqua Plus</b> Reduced rinse and final spin cycle
<b>Delicates/Silk</b>	* - 40 °C		For delicate, washable textiles, e.g. made of silk, satin, synthetic fibres or blended fabrics	<b>@ Eco<sup>+</sup></b> , <b>↓ Prewash</b> , <b>⊳ Reduced Ironing, Aqua Plus</b> No spin cycle between the rinse cycles
<b>Sportswear</b>	* - 40 °C	2 kg	Textiles for outdoor wear	<b>@ Eco<sup>+</sup></b> , <b>↓ Prewash</b> , <b>⊳ Reduced Ironing, Aqua Plus</b>
<b>Wool</b>	* - 40 °C		Hand or machine-washable wool or rich-wool textiles	Especially gentle wash programme to prevent shrinkage, longer programme pauses (textiles rest in wash liquor)
<b>Super Quick</b>	* - 40 °C		Easy-care textiles made of cotton, linen, synthetic fibres or blended fabrics	Short programme approx. 15 minutes, suitable for lightly soiled washing

## Additional programmes

**Spin**, **Drain**, **Gentle Spin**  
 The programmes are time-controlled for lightly soiled textiles. If textiles are heavily soiled, reduce the load or select additional function, e.g. **@ Eco<sup>+</sup>**.  
 When washing at maximum load using programmes marked with \*, always select **@ Eco<sup>+</sup>** additional function. Irrespective of the type of washing, **Easy-Care 40 °C** at max. selectable spin speed is best suited as a **short programme**. Programmes without Prewash – pour detergent into dispenser II, programmes with Prewash – divide detergent between dispensers I and II.

94401 / 9000762955



WIS28440GB

Robert Bosch Hausgeräte GmbH  
 Carl-Wery-Str. 34  
 81739 München/Deutschland



## Safety instructions

- Read and follow the operating and installation instructions and all other information enclosed with the washing machine.
- Retain documents for subsequent use.

### Risk of electric shock

- Never pull out the mains plug by tugging the power cord!
- Insert/pull out the mains plug with dry hands only.

### Danger to life

- On redundant appliances:
- Pull out the mains plug!
  - Sever the power cord and discard together with the plug.
  - Destroy the lock on the washing-machine door. This will prevent children from locking themselves in and suffocating.

### Risk of suffocation

- Keep packaging, plastic film and packaging parts out of the reach of children.
- Keep detergents and care products out of the reach of children.

### Risk of poisoning

### Risk of explosion

- Caused by detergents containing solvents, e.g. stain remover/items of washing pretreated with solvent naphtha may result in an explosion after being loaded into the washing machine.
- Before hand thoroughly rinse items of washing by hand.

### Risk of injury

- Washing machine door may become very hot.
- Caution when draining hot detergent solution.
- Do not climb on the washing machine.
- Do not lean on the open washing machine door.
- Do not reach into the drum in case it is still rotating.

## Consumption values

Programme	Additional function	Load	Current**	Water**	Programme duration**
<b>Cottons 30 °C*</b>	<b>@ Eco<sup>+</sup></b>	7 kg	0.55 kWh	75 l	2:12 h
<b>Cottons 40 °C*</b>	<b>@ Eco<sup>+</sup></b>	7 kg	0.85 kWh	75 l	2:12 h
<b>Cottons 60 °C*</b>	<b>@ Eco<sup>+</sup></b>	7 kg	1.50 kWh	75 l	2:12 h
<b>Cottons 90 °C</b>	<b>@ Eco<sup>+</sup></b>	7 kg	2.51 kWh	90 l	2:12 h
<b>Easy-Care 40 °C*</b>	<b>@ Eco<sup>+</sup></b>	3.5 kg	0.55 kWh	55 l	1:12 h
<b>Delicates/Silk 30 °C</b>	-	2 kg	0.20 kWh	39 l	0:40 h
<b>Wool 30 °C</b>	-	2 kg	0.20 kWh	40 l	0:36 h

\* Programme setting for test according to currently valid European standard 60456.

Information about comparability tests:

To test the test programmes, wash indicated load, with **@ Eco<sup>+</sup>** additional function and at maximum selectable spin speed.

Programme	Additional function	Load	Annual energy consumption	Annual water consumption
<b>@ Cottons Eco 40/60 °C</b>	<b>@ Eco<sup>+++</sup></b>	7/3.5 kg	218 kWh	10560 l

\*\* Programme setting for testing and energy labelling according to directive 2010/30/EU with cold water (15 °C).



\*\*\* The values may deviate from the stated values depending on water pressure and hardness, room temperature, type and amount of laundry, detergents used, fluctuations in the mains voltage and selected additional functions.

## ! Insert for liquid detergent depending on model

Position insert for dosing liquid detergent:

- Completely remove detergent drawer. → *Page 10*
- Push insert forwards.

Do not use insert (push upwards):

- For gel-like detergents and washing powders,
- For programmes with  **Prewash** or  (Ready in) option.



## Care



- **Risk of electric shock!** Pull out the mains plug!
- **Risk of explosion!** No solvents!

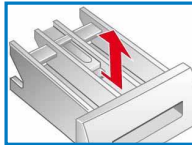
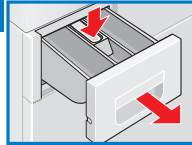
### Machine housing, control panel

- Remove detergent residue immediately.
- Wipe with a soft, damp cloth.
- Do not clean the appliance with a water jet.

### Clean the detergent drawer ...

... if it contains detergent or fabric softener residue.

1. Pull out, depress insert, take out drawer all the way.
2. Take out insert: using your finger, press insert upwards.
3. Clean detergent dispenser and insert with water and a brush and dry.
4. Attach insert and lock into position (push cylinder onto guide pin).
5. Slide in the detergent dispenser.



Leave detergent drawer open so that residual water can evaporate.

### Drum

Leave washing machine door open so that the drum can dry out.  
Use chlorine-free cleaning agent, not steel wool.

### Descaling

*No washing in the machine!*

Not required if detergent dosed correctly. However, if this does occur, follow the instructions of the descaling agent manufacturer. Suitable descalers can be purchased on our website or from customer service.

## Information on the display panel depending on model

F: 16	Close the washing machine door properly; washing may be caught.
F: 17, 29	Turn on tap fully, supply hose kinked/jammed; clean filter → <i>Page 10</i> , water pressure too low.
F: 18	Drain pump blocked; clean drain pump. → <i>Page 10</i> Drainage hose/outlet pipe blocked; clean drainage hose on the siphon. → <i>Page 10</i>
F: 23	Water in the base pan, appliance leaking. Call customer service!
F: 42, 43, 44	Motor fault. Call customer service. → <i>Installation Instructions</i>
Other displays	Switch off appliance, wait 5 seconds and switch on again. If the display is indicated again, call customer service. → <i>Installation Instructions</i>

## Maintenance



**Risk of scalding!**

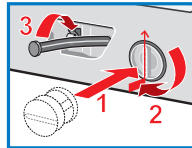
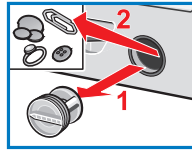
- Allow detergent solution to cool down!
- Turn off the tap!



### Detergent-solution pump

Set programme selector to **Off**, pull out the mains plug.

1. Take the drainage hose out of the holder. Remove sealing cap, allow detergent solution to flow out. Put the closing cap back on the hose.
2. Carefully unscrew the pump cover (residual water).
3. Clean the interior, pump cover thread and pump housing (fan impeller in the detergent-solution pump must rotate).
4. Reinsert and screw on pump cover. Handle is upright. Insert the drain hose into the holder.



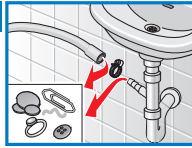
To prevent unused detergent from flowing into the outlet during the next wash: Pour 1 litre of water into dispenser **II** and start the  **Drain** programme.



### Drainage hose on the siphon

Set programme selector to **Off**, pull out the mains plug.

1. Loosen hose clip, carefully remove drainage hose (residual water).
2. Clean drainage hose and siphon spigot.
3. Re-attach drainage hose and secure connection point with hose clip.






### Filter in the water inlet hose



**Risk of electric shock!**

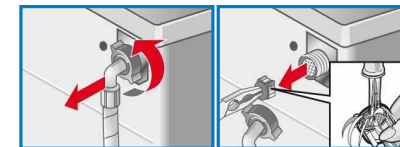
Do not immerse Aqua-Stop safety device in water (contains electric valve).

Release water pressure in the supply hose:

1. Turn off the tap!
2. Select any programme (except  **Spin**/ **Drain**).
3. Select  **Start**/Pause. Leave programme for approx. 40 seconds.
4. Turn the programme selector to **Off**. Pull out the mains plug.

Clean the filter:

5. Disconnect the hose from the water tap. Clean filter with small brush.
- and/or** for standard and Aqua-Secure models:  
remove hose from the rear of the appliance, take out filter with pliers and clean.
6. Connect the hose and check for leaks.



# What to do if ...

Water is running out.	<ul style="list-style-type: none"> <li>- Correctly attach/replace drainage hose.</li> <li>- Tighten screw-fitting on the supply hose.</li> </ul>
Water not flowing in. Detergent not washed in.	<ul style="list-style-type: none"> <li>- <b>Start</b>/Pause not selected?</li> <li>- Tap not open?</li> <li>- Filter blocked? Clean the filter. → <i>Page 10</i></li> <li>- Supply hose kinked or jammed?</li> </ul>
Washing-machine door cannot be opened.	<ul style="list-style-type: none"> <li>- Safety function active. Stop programme? → <i>Page 4</i></li> <li>- <b>(rinse stop = without final spin)</b> selected? → <i>Page 3, 4</i></li> <li>- Can be opened via emergency release only? → <i>Page 6</i></li> </ul>
Programme does not start.	<ul style="list-style-type: none"> <li>- <b>Start</b>/Pause or <b>(Ready in)</b> time selected?</li> <li>- Door closed?</li> </ul>
Detergent solution is not drained.	<ul style="list-style-type: none"> <li>- <b>(rinse stop = without final spin)</b> selected? → <i>Page 3, 4</i></li> <li>- Clean the drain pump. → <i>Page 10</i></li> <li>- Clean outlet pipe and/or drainage hose.</li> </ul>
Water not visible in the drum.	<ul style="list-style-type: none"> <li>- Not a fault - water below the visible area.</li> </ul>
Spin result not satisfactory, washing wet/too damp.	<ul style="list-style-type: none"> <li>- Not a fault - unbalanced load detection system has stopped the spin cycle, washing unevenly distributed. Distribute small and large items of washing in the drum.</li> <li>- <b>Reduced Ironing</b> selected? → <i>Page 5</i></li> <li>- Too low speed selected? → <i>Page 5</i></li> </ul>
The programme duration changes during the wash cycle.	<ul style="list-style-type: none"> <li>- Not a fault - the programme sequence is optimised for the particular wash process. This may result in changes to the programme duration in the display field.</li> </ul>
Spin cycle actuated several times.	<ul style="list-style-type: none"> <li>- Not a fault - unbalanced load detection system adjusts imbalance.</li> </ul>
Residual water in the dispenser for care product <b>⊗</b> .	<ul style="list-style-type: none"> <li>- Not a fault - effect of the care product not impaired.</li> <li>- If required, clean insert. → <i>Page 9</i></li> </ul>
Odour formation in the washing machine.	<ul style="list-style-type: none"> <li>- Run <b>Cottons 90 °C</b> programme without washing. Use standard detergent.</li> </ul>
Foam is coming out of the detergent drawer.	<ul style="list-style-type: none"> <li>- Too much detergent used?</li> <li>- Mix 1 tablespoon of fabric softener with ½ litre of water and pour into dispenser <b>II</b> (not for outdoor, sports and down-filled textiles!).</li> <li>- Reduce detergent dosage for the next wash cycle.</li> </ul>
Loud noise formation, vibrations and "Wandering" during spin cycle.	<ul style="list-style-type: none"> <li>- Appliance feet fixed? Secure appliance feet. → <i>Installation Instructions</i></li> <li>- Transportation protection devices removed? Remove transportation protection devices. → <i>Installation Instructions</i></li> </ul>
Noises during spin and drain cycles.	<ul style="list-style-type: none"> <li>- Clean the drain pump. → <i>Page 10</i></li> </ul>
Display panel/indicator lights do not function while the appliance is running.	<ul style="list-style-type: none"> <li>- Power failure?</li> <li>- Fuse tripped? Switch on/replace fuse.</li> <li>- If the fault occurs repeatedly, call customer service.</li> </ul>
The programme takes longer than usual.	<ul style="list-style-type: none"> <li>- Not a fault - unbalanced load detection system adjusts imbalance by repeatedly distributing the washing.</li> <li>- Not a fault - foam detection system active - a rinse cycle is switched on.</li> </ul>
Detergent residue on the washing.	<ul style="list-style-type: none"> <li>- Occasionally phosphate-free detergents contain water-insoluble residue.</li> <li>- Select <b>Rinse</b> or brush the laundry after washing.</li> </ul>
In the pause status <b>Start</b> / <b>Pause</b> flashes very quickly and a signal sounds.	<ul style="list-style-type: none"> <li>- Water level too high. Washing cannot be reloaded. Immediately close washing machine door.</li> <li>- Select <b>Start</b>/Pause to continue the programme.</li> </ul>

If a fault cannot be rectified (switching the machine on and off) or a repair is required:

- Set programme selector to **Off** and pull out the mains plug.
- Turn off the tap and call customer service. → *Installation Instructions*



Washing machine



en Operating instructions