

# Your washing machine

**Congratulations** - you have opted for a modern, high-quality domestic appliance manufactured by Bosch. This washing machine is distinguished by its economical water and energy consumption. Each machine that leaves our factory has been inspected thoroughly to ensure that it functions properly and is in perfect condition.

For more information on our products, accessories, replacement parts and services, visit our website [www.bosch-home.com](http://www.bosch-home.com) or contact one of our after-sales service centres.

## Contents

Intended use	Page
Programmes	1
Setting and adjusting the programme	3
Washing	3/4
After washing	4
Individual settings	5/6
Overview of programmes	7
Safety instructions	8
Consumption values	8
Important information	9
Insert for liquid detergent	10
Care	10
Information on the display panel	10
Instructions for blockages	11
What to do if...	12/13
Emergency release	13
After-sales service	13



### Environmental protection / savings tips

- Always fill the washing machine with a maximum amount of laundry for the relevant programme.
- Wash normally soiled laundry without a prewash.
- Instead of **Cottons 90 °C**, select the **Cottons 60 °C** programme and the **Eco Perfect** additional function. Comparable cleaning result with significantly lower energy consumption.
- Measure the detergent according to the manufacturer's instructions and water hardness.
- If the laundry is then dried in the tumble dryer, select the spin speed according to the instructions of the dryer manufacturer.

## Intended use

- For domestic use only
- For washing machine-washable fabrics and hand-washable wool in detergent solution
- To be operated with cold drinking water and commercially available detergents and care products which are suitable for use in washing machines.

- Observe the safety instructions on page 8
- Do not leave children unattended near the washing machine.
- The washing machine is not to be used by children or persons not familiar with the operating instructions.
- Keep pets away from the washing machine.

Read these instructions and the separate installation instructions before operating the washing machine.

## Preparation

Correct installation according to the separate Installation instructions.

### Check the machine

- Never use a damaged machine.
- Inform the after-sales service.

### Connect the mains plug

- Make sure your hands are dry.
- Take hold of the plug only.

### Turn the tap on

Insert for liquid detergent (depending on model), page 10

**Compartment II:** detergent for main wash, water softener, bleach, stain remover  
**Compartment ⌘:** fabric softener, starch  
**Compartment I:** Detergent for prewash

Follow the manufacturer's care information. According to the information on the care labels. According to type, colour, level of soiling and temperature. Do not exceed the maximum load → page 7.

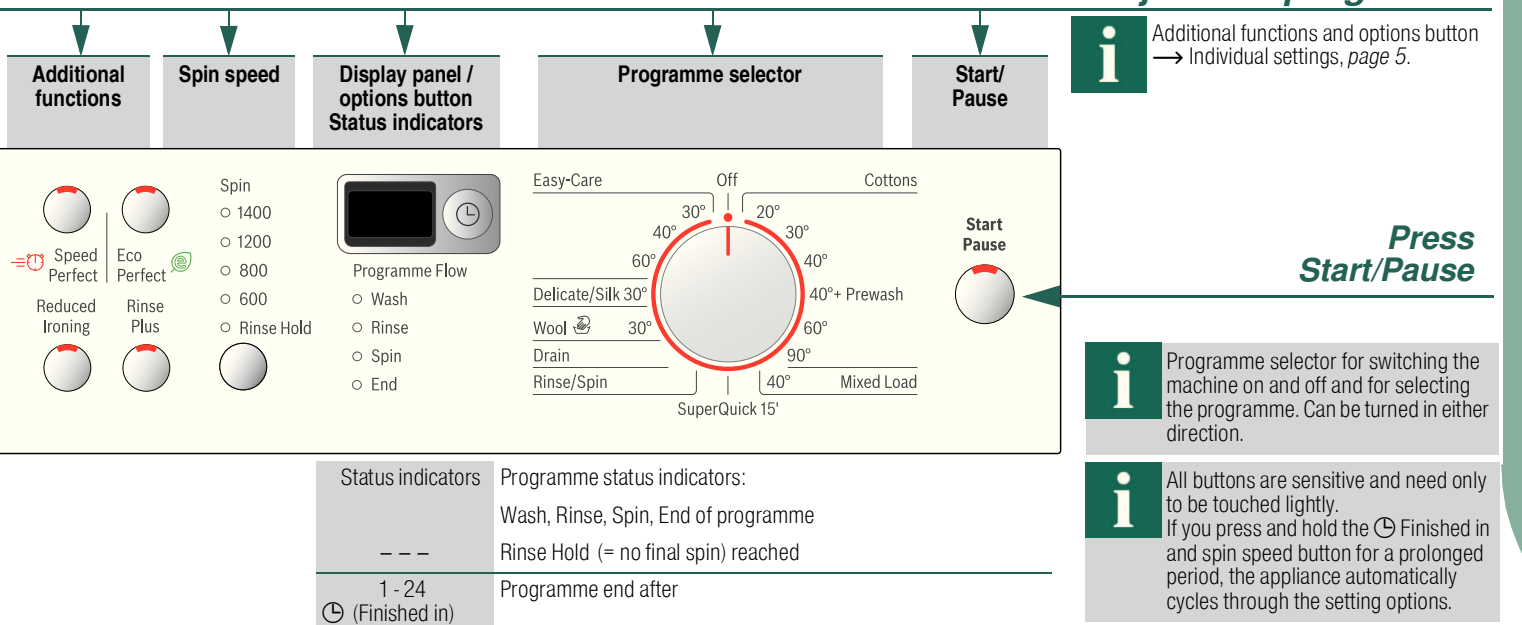
Observe the important information → page 9. Insert items of laundry of varying sizes. Measure accordingly: Amount of laundry, level of soiling, water hardness (ask your water supply company) and manufacturer's instructions. Models without insert for liquid detergent: Pour liquid detergent into the appropriate dispenser and place in the drum. During operation: Open the detergent drawer with care.

Dilute thick fabric softener and conditioner with water. This prevents blockages.

## Programmes

Detailed programme overview → page 7. The spin speed can be selected individually, depending on the selected programme and programme progress.

<b>Cottons</b>	Hard-wearing fabrics
+ Prewash	Hard-wearing fabrics, prewash at 40 °C
<b>Mixed Load</b>	Different types of laundry
<b>SuperQuick 15'</b>	Extra short programme
Rinse/Spin	for hand-washed items; <b>Rinse Plus</b> button activated; if only using the spin cycle, deactivate the button
<b>Drain</b>	the water used for rinsing if <b>Rinse Hold</b> (= no final spin) is shown
<b>Wool</b>	Hand/machine-washable wool
<b>Delicate/Silk</b>	Delicate washable fabrics
<b>Easy-Care</b>	Easy-care fabrics



### Set and adjust the programme

Additional functions and options button → Individual settings, page 5.

Press **Start/Pause**

Programme selector for switching the machine on and off and for selecting the programme. Can be turned in either direction.

All buttons are sensitive and need only to be touched lightly. If you press and hold the **Finished in** and spin speed button for a prolonged period, the appliance automatically cycles through the setting options.

## Wash

Before washing for the first time Run a wash cycle without any laundry → page 9

### Sort and load the laundry

Follow the manufacturer's care information. According to the information on the care labels. According to type, colour, level of soiling and temperature. Do not exceed the maximum load → page 7.

Observe the important information → page 9. Insert items of laundry of varying sizes.

Measure accordingly: Amount of laundry, level of soiling, water hardness (ask your water supply company) and manufacturer's instructions. Models without insert for liquid detergent: Pour liquid detergent into the appropriate dispenser and place in the drum. During operation: Open the detergent drawer with care.

Dilute thick fabric softener and conditioner with water. This prevents blockages.

Detergent drawer with compartments I, II, ⌘

Washing machine door  
Control panel  
Washing machine door handle

Service flap

Washing

End of programme when ...

... **Start/Pause** is off and **End** (End of programme) is lit.

If the display panel illumination is off, press any button → Energy saving mode, page 5.

Cancel the programme

For programmes at high temperatures:  
 - Allow laundry to cool: Select **Rinse/Spin**.  
 - Press **Start/Pause**.

For programmes at low temperatures:  
 - Select **Rinse/Spin** (deactivate the **Rinse Plus** button) or select **Drain**.  
 - Press **Start/Pause**.

Change the programme if...

... you have selected the wrong programme by mistake:  
 - Reselect the programme.  
 - Press **Start/Pause**. The new programme starts from the beginning.

Add laundry, if... → page 5

... **Start/Pause** pressed and then **YES** lights up in the display panel. If **NO** is lit, the washing machine door cannot be opened. Press the **Start/Pause** button.

Switch off

Turn the programme selector to **Off**.

Turn the tap off

Not required for HydroSafe models → Installation instruction notes.

Remove the laundry

Open the washing machine door and remove the laundry. If **Rinse Hold** (= no final spin) active: Turn the programme selector to **Drain** or select a spin speed. Press **Start/Pause**.

Additional functions → and overview of programmes, page 7

**Speed Perfect** For washing in a shorter time with a washing result comparable to that of the standard programme. Maximum load → Overview of programmes, page 7.

**Eco Perfect** For saving energy with a washing performance comparable to that of the standard programme.

**Reduced Ironing** Special spin sequence with subsequent fluffing. Gentle final spin at reduced speed. Residual moisture in the laundry is increased slightly.

**Rinse Plus** Additional rinse cycle. For areas with very soft water or for further improving the washing result.

**Add laundry** If you want to add additional items of laundry after the programme has started, press **Start/Pause**. The machine checks whether adding laundry is possible. **YES** lights up: Adding laundry is possible. **NO** flashes: Wait until **YES** lights up. **Note:** Do not open the washing machine door until **YES** lights up. **Note:** If the water level and/or the temperature is high or if the machine is spinning, the washing machine door remains locked for safety reasons. To continue the programme, press the **Start/Pause** button.

**Energy saving mode** The illumination of the display panel goes out after a few minutes and **Start/Pause** flashes. To activate the illumination, press any button.

**Start/Pause** For starting the programme and adding laundry.

**Signal** 1. Activate the setting mode for signal volume. Set to •, 1 step clockwise, Press and hold + 1 step clockwise, Release. 2. Set the volume for ... Set the volume\*, 1 step clockwise, Set the volume\*, Set to •. \* you may need to select the function several times.

**Options button (Finished in)** When you select a programme, the relevant programme duration is displayed. You can delay the start of the programme before it begins. The "Finished in" time can be set in increments of one hour up to a maximum of 24 hours. Press the **Finished in** button repeatedly until the desired number of hours is displayed (h = hour). Press **Start/Pause**. It is not possible to make adjustments once the programme has started.

**Options button Spin (spin speed in rpm) / Rinse Hold (= no final spin)** You can change the spin speed shown or select **Rinse Hold** (= no final spin, laundry remains in the water after the last rinse, display panel -- --). The maximum selectable spin speed depends on the model and on which programme is currently selected.

**Additional functions** → and overview of programmes, page 7

**Speed Perfect** For washing in a shorter time with a washing result comparable to that of the standard programme. Maximum load → Overview of programmes, page 7.

**Eco Perfect** For saving energy with a washing performance comparable to that of the standard programme.

**Reduced Ironing** Special spin sequence with subsequent fluffing. Gentle final spin at reduced speed. Residual moisture in the laundry is increased slightly.

**Rinse Plus** Additional rinse cycle. For areas with very soft water or for further improving the washing result.

**Add laundry** If you want to add additional items of laundry after the programme has started, press **Start/Pause**. The machine checks whether adding laundry is possible. **YES** lights up: Adding laundry is possible. **NO** flashes: Wait until **YES** lights up. **Note:** Do not open the washing machine door until **YES** lights up. **Note:** If the water level and/or the temperature is high or if the machine is spinning, the washing machine door remains locked for safety reasons. To continue the programme, press the **Start/Pause** button.

**Energy saving mode** The illumination of the display panel goes out after a few minutes and **Start/Pause** flashes. To activate the illumination, press any button.

**Start/Pause** For starting the programme and adding laundry.

**Signal** 1. Activate the setting mode for signal volume. Set to •, 1 step clockwise, Press and hold + 1 step clockwise, Release. 2. Set the volume for ... Set the volume\*, 1 step clockwise, Set the volume\*, Set to •. \* you may need to select the function several times.

**Options button (Finished in)** When you select a programme, the relevant programme duration is displayed. You can delay the start of the programme before it begins. The "Finished in" time can be set in increments of one hour up to a maximum of 24 hours. Press the **Finished in** button repeatedly until the desired number of hours is displayed (h = hour). Press **Start/Pause**. It is not possible to make adjustments once the programme has started.

**Options button Spin (spin speed in rpm) / Rinse Hold (= no final spin)** You can change the spin speed shown or select **Rinse Hold** (= no final spin, laundry remains in the water after the last rinse, display panel -- --). The maximum selectable spin speed depends on the model and on which programme is currently selected.

**Additional functions** → and overview of programmes, page 7

**Speed Perfect** For washing in a shorter time with a washing result comparable to that of the standard programme. Maximum load → Overview of programmes, page 7.

**Eco Perfect** For saving energy with a washing performance comparable to that of the standard programme.

**Reduced Ironing** Special spin sequence with subsequent fluffing. Gentle final spin at reduced speed. Residual moisture in the laundry is increased slightly.

**Rinse Plus** Additional rinse cycle. For areas with very soft water or for further improving the washing result.

**Add laundry** If you want to add additional items of laundry after the programme has started, press **Start/Pause**. The machine checks whether adding laundry is possible. **YES** lights up: Adding laundry is possible. **NO** flashes: Wait until **YES** lights up. **Note:** Do not open the washing machine door until **YES** lights up. **Note:** If the water level and/or the temperature is high or if the machine is spinning, the washing machine door remains locked for safety reasons. To continue the programme, press the **Start/Pause** button.

**Energy saving mode** The illumination of the display panel goes out after a few minutes and **Start/Pause** flashes. To activate the illumination, press any button.

**Start/Pause** For starting the programme and adding laundry.

**Signal** 1. Activate the setting mode for signal volume. Set to •, 1 step clockwise, Press and hold + 1 step clockwise, Release. 2. Set the volume for ... Set the volume\*, 1 step clockwise, Set the volume\*, Set to •. \* you may need to select the function several times.

**Options button (Finished in)** When you select a programme, the relevant programme duration is displayed. You can delay the start of the programme before it begins. The "Finished in" time can be set in increments of one hour up to a maximum of 24 hours. Press the **Finished in** button repeatedly until the desired number of hours is displayed (h = hour). Press **Start/Pause**. It is not possible to make adjustments once the programme has started.

**Options button Spin (spin speed in rpm) / Rinse Hold (= no final spin)** You can change the spin speed shown or select **Rinse Hold** (= no final spin, laundry remains in the water after the last rinse, display panel -- --). The maximum selectable spin speed depends on the model and on which programme is currently selected.

**Additional functions** → and overview of programmes, page 7

**Speed Perfect** For washing in a shorter time with a washing result comparable to that of the standard programme. Maximum load → Overview of programmes, page 7.

**Eco Perfect** For saving energy with a washing performance comparable to that of the standard programme.

**Reduced Ironing** Special spin sequence with subsequent fluffing. Gentle final spin at reduced speed. Residual moisture in the laundry is increased slightly.

**Rinse Plus** Additional rinse cycle. For areas with very soft water or for further improving the washing result.

**Add laundry** If you want to add additional items of laundry after the programme has started, press **Start/Pause**. The machine checks whether adding laundry is possible. **YES** lights up: Adding laundry is possible. **NO** flashes: Wait until **YES** lights up. **Note:** Do not open the washing machine door until **YES** lights up. **Note:** If the water level and/or the temperature is high or if the machine is spinning, the washing machine door remains locked for safety reasons. To continue the programme, press the **Start/Pause** button.

**Energy saving mode** The illumination of the display panel goes out after a few minutes and **Start/Pause** flashes. To activate the illumination, press any button.

**Start/Pause** For starting the programme and adding laundry.

**Signal** 1. Activate the setting mode for signal volume. Set to •, 1 step clockwise, Press and hold + 1 step clockwise, Release. 2. Set the volume for ... Set the volume\*, 1 step clockwise, Set the volume\*, Set to •. \* you may need to select the function several times.

**Options button (Finished in)** When you select a programme, the relevant programme duration is displayed. You can delay the start of the programme before it begins. The "Finished in" time can be set in increments of one hour up to a maximum of 24 hours. Press the **Finished in** button repeatedly until the desired number of hours is displayed (h = hour). Press **Start/Pause**. It is not possible to make adjustments once the programme has started.

**Options button Spin (spin speed in rpm) / Rinse Hold (= no final spin)** You can change the spin speed shown or select **Rinse Hold** (= no final spin, laundry remains in the water after the last rinse, display panel -- --). The maximum selectable spin speed depends on the model and on which programme is currently selected.

**Additional functions** → and overview of programmes, page 7

**Speed Perfect** For washing in a shorter time with a washing result comparable to that of the standard programme. Maximum load → Overview of programmes, page 7.

**Eco Perfect** For saving energy with a washing performance comparable to that of the standard programme.

**Reduced Ironing** Special spin sequence with subsequent fluffing. Gentle final spin at reduced speed. Residual moisture in the laundry is increased slightly.

**Rinse Plus** Additional rinse cycle. For areas with very soft water or for further improving the washing result.

**Add laundry** If you want to add additional items of laundry after the programme has started, press **Start/Pause**. The machine checks whether adding laundry is possible. **YES** lights up: Adding laundry is possible. **NO** flashes: Wait until **YES** lights up. **Note:** Do not open the washing machine door until **YES** lights up. **Note:** If the water level and/or the temperature is high or if the machine is spinning, the washing machine door remains locked for safety reasons. To continue the programme, press the **Start/Pause** button.

**Energy saving mode** The illumination of the display panel goes out after a few minutes and **Start/Pause** flashes. To activate the illumination, press any button.

**Start/Pause** For starting the programme and adding laundry.

**Signal** 1. Activate the setting mode for signal volume. Set to •, 1 step clockwise, Press and hold + 1 step clockwise, Release. 2. Set the volume for ... Set the volume\*, 1 step clockwise, Set the volume\*, Set to •. \* you may need to select the function several times.

**Options button (Finished in)** When you select a programme, the relevant programme duration is displayed. You can delay the start of the programme before it begins. The "Finished in" time can be set in increments of one hour up to a maximum of 24 hours. Press the **Finished in** button repeatedly until the desired number of hours is displayed (h = hour). Press **Start/Pause**. It is not possible to make adjustments once the programme has started.

**Options button Spin (spin speed in rpm) / Rinse Hold (= no final spin)** You can change the spin speed shown or select **Rinse Hold** (= no final spin, laundry remains in the water after the last rinse, display panel -- --). The maximum selectable spin speed depends on the model and on which programme is currently selected.

**Additional functions** → and overview of programmes, page 7

**Speed Perfect** For washing in a shorter time with a washing result comparable to that of the standard programme. Maximum load → Overview of programmes, page 7.

**Eco Perfect** For saving energy with a washing performance comparable to that of the standard programme.

**Reduced Ironing** Special spin sequence with subsequent fluffing. Gentle final spin at reduced speed. Residual moisture in the laundry is increased slightly.

**Rinse Plus** Additional rinse cycle. For areas with very soft water or for further improving the washing result.

**Add laundry** If you want to add additional items of laundry after the programme has started, press **Start/Pause**. The machine checks whether adding laundry is possible. **YES** lights up: Adding laundry is possible. **NO** flashes: Wait until **YES** lights up. **Note:** Do not open the washing machine door until **YES** lights up. **Note:** If the water level and/or the temperature is high or if the machine is spinning, the washing machine door remains locked for safety reasons. To continue the programme, press the **Start/Pause** button.

**Energy saving mode** The illumination of the display panel goes out after a few minutes and **Start/Pause** flashes. To activate the illumination, press any button.

**Start/Pause** For starting the programme and adding laundry.

**Signal** 1. Activate the setting mode for signal volume. Set to •, 1 step clockwise, Press and hold + 1 step clockwise, Release. 2. Set the volume for ... Set the volume\*, 1 step clockwise, Set the volume\*, Set to •. \* you may need to select the function several times.

**Options button (Finished in)** When you select a programme, the relevant programme duration is displayed. You can delay the start of the programme before it begins. The "Finished in" time can be set in increments of one hour up to a maximum of 24 hours. Press the **Finished in** button repeatedly until the desired number of hours is displayed (h = hour). Press **Start/Pause**. It is not possible to make adjustments once the programme has started.

**Options button Spin (spin speed in rpm) / Rinse Hold (= no final spin)** You can change the spin speed shown or select **Rinse Hold** (= no final spin, laundry remains in the water after the last rinse, display panel -- --). The maximum selectable spin speed depends on the model and on which programme is currently selected.

**Additional functions** → and overview of programmes, page 7

**Speed Perfect** For washing in a shorter time with a washing result comparable to that of the standard programme. Maximum load → Overview of programmes, page 7.

**Eco Perfect** For saving energy with a washing performance comparable to that of the standard programme.

**Reduced Ironing** Special spin sequence with subsequent fluffing. Gentle final spin at reduced speed. Residual moisture in the laundry is increased slightly.

**Rinse Plus** Additional rinse cycle. For areas with very soft water or for further improving the washing result.

**Add laundry** If you want to add additional items of laundry after the programme has started, press **Start/Pause**. The machine checks whether adding laundry is possible. **YES** lights up: Adding laundry is possible. **NO** flashes: Wait until **YES** lights up. **Note:** Do not open the washing machine door until **YES** lights up. **Note:** If the water level and/or the temperature is high or if the machine is spinning, the washing machine door remains locked for safety reasons. To continue the programme, press the **Start/Pause** button.

**Energy saving mode** The illumination of the display panel goes out after a few minutes and **Start/Pause** flashes. To activate the illumination, press any button.

**Start/Pause** For starting the programme and adding laundry.

**Signal** 1. Activate the setting mode for signal volume. Set to •, 1 step clockwise, Press and hold + 1 step clockwise, Release. 2. Set the volume for ... Set the volume\*, 1 step clockwise, Set the volume\*, Set to •. \* you may need to select the function several times.

**Options button (Finished in)** When you select a programme, the relevant programme duration is displayed. You can delay the start of the programme before it begins. The "Finished in" time can be set in increments of one hour up to a maximum of 24 hours. Press the **Finished in** button repeatedly until the desired number of hours is displayed (h = hour). Press **Start/Pause**. It is not possible to make adjustments once the programme has started.

**Options button Spin (spin speed in rpm) / Rinse Hold (= no final spin)** You can change the spin speed shown or select **Rinse Hold** (= no final spin, laundry remains in the water after the last rinse, display panel -- --). The maximum selectable spin speed depends on the model and on which programme is currently selected.

**Additional functions** → and overview of programmes, page 7

**Speed Perfect** For washing in a shorter time with a washing result comparable to that of the standard programme. Maximum load → Overview of programmes, page 7.

**Eco Perfect** For saving energy with a washing performance comparable to that of the standard programme.

**Reduced Ironing** Special spin sequence with subsequent fluffing. Gentle final spin at reduced speed. Residual moisture in the laundry is increased slightly.

**Rinse Plus** Additional rinse cycle. For areas with very soft water or for further improving the washing result.

**Add laundry** If you want to add additional items of laundry after the programme has started, press **Start/Pause**. The machine checks whether adding laundry is possible. **YES** lights up: Adding laundry is possible. **NO** flashes: Wait until **YES** lights up. **Note:** Do not open the washing machine door until **YES** lights up. **Note:** If the water level and/or the temperature is high or if the machine is spinning, the washing machine door remains locked for safety reasons. To continue the programme, press the **Start/Pause** button.

**Energy saving mode** The illumination of the display panel goes out after a few minutes and **Start/Pause** flashes. To activate the illumination, press any button.

**Start/Pause** For starting the programme and adding laundry.

**Signal** 1. Activate the setting mode for signal volume. Set to •, 1 step clockwise, Press and hold + 1 step clockwise, Release. 2



## Safety instructions

- Read the Instruction manual and Installation instructions and all other information enclosed with the washing machine and use the machine accordingly.
- Retain the documents for subsequent use.

**Risk of electric shock**

- Only disconnect the mains cable by pulling on the plug, not on the cable itself.
- Only plug in or disconnect the mains plug if your hands are dry.

**Danger to life**

For worn-out appliances:

- Pull out the mains plug.
- Cut through the mains cable and remove complete with plug.
- Destroy the lock on the washing machine door. This will prevent children from locking themselves in and risking their lives.

**Danger of suffocation**

- Keep packaging, film and packaging parts out of the reach of children.

**Risk of poisoning**

- Keep detergents and care products out of the reach of children.

**Risk of explosion**

- Items of laundry pretreated with cleaning agents containing solvents, e.g. stain remover/cleaning solvent may cause an explosion after being loaded into the washing machine.

**Risk of injury**

- Rinse items of laundry thoroughly by hand beforehand.
- The washing machine door can become very hot.
- Be careful when emptying hot detergent solution.
- Do not climb onto the washing machine.
- Do not lean on the open washing machine door.
- Do not reach into the drum if it is still rotating.



## Important information



### Before washing for the first time

Do not put any laundry in the machine. Turn the tap on. Pour into compartment II:
 

- approx. **1 litre** water
- detergent (dosage according to the manufacturer's instructions for light soiling and according to water hardness)

 Set the programme selector to **Easy-Care 60 °C** and press **Start/Pause**. At the end of the programme, set the programme selector to **Off**.



### Protecting the laundry and the machine

- When measuring the amount of all detergents/additives and cleaning agents, always check the manufacturer's instructions.
- Empty pockets.
- Look out for metal items (paperclips, etc.).
- Wash delicates in a laundry bag (tights, curtains, underwired bras).
- Fasten zips, do up any buttons.
- Brush sand out of pockets and collars.
- Remove curtain fittings or place in the laundry bag.



### Loading laundry

Load items of laundry of varying sizes. Take care not to trap items of laundry between the washing machine door and the rubber seal.



### Laundry with varying degrees of soiling

Wash new items of clothing separately. Do not prewash. Where required, select additional function **Speed Perfect**. If necessary, pretreat stains.



light Do not prewash. Where required, select additional function **Speed Perfect**. If necessary, pretreat stains.



heavy Do not load as much laundry. Select programme with prewash.



### Soaking

Load laundry of the same colour. Pour soaking agent/detergent into compartment II in accordance with the manufacturer's instructions. Set programme selector to **Cottons 30 °C** and press **Start/Pause**. After approx. 10 minutes, press **Start/Pause** in order to stop the programme. Once the required soaking time has elapsed, press **Start/Pause** again to continue the programme or to select a different programme.



### Starching

Laundry must not be treated with fabric softener. Starching is possible in all wash programmes if liquid starch is used. Measure starch into the fabric softening compartment according to the manufacturer's instructions (clean beforehand if necessary).



### Dyeing/bleaching

Dye should only be used in normal household quantities. Salt may damage stainless steel. Check the guidelines provided by the dye manufacturer. Do **not** bleach laundry in the washing machine.



## Insert for liquid detergent

according to model

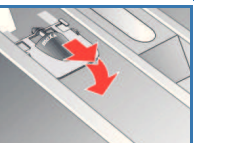


Positioning the insert for measuring the amount of liquid detergent:
 

- Remove the detergent drawer completely → page 10.
- Slide the insert forwards.

 Do not use the insert (push it upwards):
 

- for gel-type detergents and washing powders,
- for programmes with **+Prewash** or option (Finished in)



## Care

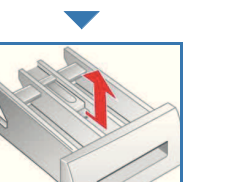
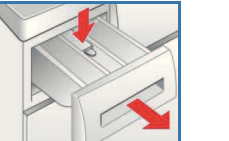
### Machine housing, control panel

- Remove detergent residue immediately.
- Wipe away with a soft, damp cloth.
- Do not clean with a jet of water.

### Cleaning the detergent drawer ...

... if it contains detergent or fabric softener residues.

- Pull out, press down the insert and fully remove the drawer.
- To remove the insert: press the insert upwards from below with your finger.
- Clean the detergent dispenser tray and insert with water and a brush and dry it.
- Fit the insert and lock it place (push the cylinder onto the guide pin).
- Push in the detergent drawer.



Leave the detergent drawer open so that any residual water can evaporate.

### Drum

Leave the washing machine door open so that the drum can dry out. Use chlorine-free cleaning agent (no steel wool).

### Descaling

Make sure that there is no laundry in the machine. This should not be necessary if the correct detergent dosage has been used. If it is necessary, however, proceed according to the descaling agent manufacturer's instructions. Suitable descalers can be obtained via our website or from our after-sales service (→ page 13).

## Information on the display panel

depending on the model

E: 16	Close the washing machine door properly; laundry may be caught.
E: 17, 29	Turn the tap on fully; supply hose kinked/trapped; Clean the filter → page 11, water pressure too low.
E: 18	Detergent solution pump blocked; Clean the detergent solution pump → page 11. Drainage hose/waste pipe blocked; Clean the drainage hose at the siphon → page 11.
E: 23	Water in the base tub, appliance leaking. Call the after-sales service.
Other displays	Switch off the appliance, wait for 5 seconds and switch it back on again. If the display appears again, call the after-sales service → page 13.

## Information about blockages



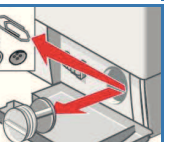
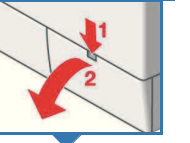
Risk of scalding.
 

- Allow the detergent solution to cool down.
- Turn off the tap.

### Detergent solution pump

Set the programme selector to **Off** and pull out the mains plug.

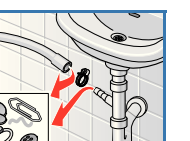
- Open and remove the service flap.
- Remove the drain hose from the retainer. Remove the sealing cap, allow the detergent solution to flow out. Push the sealing cap back on.
- Carefully unscrew the pump cover (residual water).
- Clean the interior, pump cover thread and pump housing (the impeller in the detergent solution pump must be able to rotate).
- Replace the pump cover and screw it on tightly. The handle points upright. Replace the drain hose in the holder.
- Refit the service flap and close it.



### Drainage hose at the siphon

Set the programme selector to **Off** and pull out the mains plug.

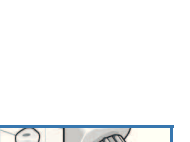
- Release the hose clamp and carefully pull off the drain hose (residual water).
- Clean the drainage hose and siphon connecting piece.
- Reattach the drainage hose and secure the connection with the hose clamp.



### Filter in the water supply

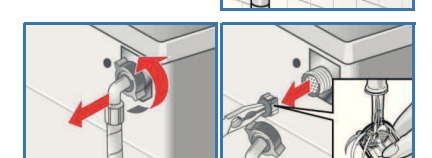
Risk of electric shock. Do not immerse the HydroSafe safety device in water (it contains an electric valve).

- Reduce the water pressure in the supply hose:
- Turn off the tap.
  - Select any programme (except Rinse/Spin // Drain).
  - Press **Start/Pause**. Let the programme run for approximately 40 seconds.
  - Set the programme selector to **Off**. Pull out the mains plug.



Clean the filter:
 

- Disconnect the hose from the tap.
- Clean the filter with a small brush.



and/or on standard and Aquasecure models: Remove the hose from the rear of the appliance. Take out the filter with a pair of pliers and clean it.

- Connect the hose and check for leaks.

## What to do if...

- Water is leaking out.
  - Attach/replace the drainage hose correctly.
  - Tighten the screw connection of the supply hose.
- No water supply. Detergent not dispensed.
  - Start/Pause** not pressed?
  - Tap not turned on?
  - Filter blocked? Clean the filter → page 11.
  - Supply hose kinked or trapped?
- Washing machine door cannot be opened.
  - Safety function active. Programme cancellation? → page 4.
  - Rinse Hold** (= no final spin) selected? → page 3, 4.
  - Can be opened by emergency release only? → page 13.
- Programme does not start.
  - Start/Pause** pressed or (Finished in) time selected?
  - Washing machine door closed?
  - Childlock active? Deactivate → page 5.
- Detergent solution is not emptied.
  - Rinse Hold** (= no final spin) selected? → page 3, 4.
  - Clean the detergent solution pump → page 11.
  - Clean drain pipe and/or drain hose.
- Water not visible in the drum.
  - Not a fault - water below the visible area.
- Spin result not satisfactory. Laundry wet/too damp.
  - Not a fault - imbalance monitoring system has cancelled spinning, due to uneven laundry distribution.
  - Distribute large and small items of laundry evenly in the drum.
  - Reduced Ironing** selected? → page 5.
  - Too low a speed selected? → page 5.
- The programme duration changes during the wash cycle.
  - Not a fault - the programme cycle is optimised for the particular washing process. That can lead to alterations in the programme duration in the display panel.
- Repeated spin start-up.
  - Not a fault - imbalance system is equalising the imbalance.
- Residual water in the compartment for care products.
  - Not a fault - the action of the care product is not affected.
  - Clean the insert if necessary → page 10.
- Odour formation in the washing machine.
  - Run the **Cottons 90 °C** programme without any laundry in the machine. Use standard detergent for this purpose.
- status indicator flashes. Detergent may escape from the detergent drawer
  - Too much detergent used?
  - Mix 1 tablespoon of fabric softener with ½ litre of water and pour into compartment II (not for outdoor or down fabrics).
  - Reduce the detergent dosage for the next wash cycle.
- Pronounced generation of noise, vibration and "wandering" during spinning.
  - Are the appliance feet fixed? Secure appliance feet → Installation instructions.
  - Transportation safety devices removed? Remove transportation safety devices → Installation instructions.
- Noises during spinning and emptying.
  - Clean the detergent solution pump → page 11.
- Display panel/indicator lamps do not function during operation.
  - Power cut?
  - Circuit breakers tripped? Switch circuit breakers back on or replace.
  - Energy saving mode active?
  - If the fault recurs, call our after-sales service.
- Programme cycle longer than usual.
  - Not a fault - the imbalance monitoring system is equalising the imbalance by repeatedly redistributing the laundry.
  - Not a fault - foam detection system active - adds an additional rinse cycle.
- Detergent residue on the laundry.
  - In isolated cases, phosphate-free detergents may contain residues which are non-soluble in water.
  - Select **Rinse/Spin** or brush down the laundry after washing.

## What to do if...

- In Add laundry mode, **Start/Pause** flashes very quickly and a signal sounds
    - Water level too high. Not possible to add laundry. Close the washing machine door immediately if necessary.
    - To continue the programme, press the **Start/Pause** button.
- If you cannot correct a fault yourself (switching on/off) or a repair is required:
  - Set the programme selector to **Off** and pull the mains plug out of the socket.
  - Turn off the tap and call our after-sales service → page 13.

## Emergency release

e.g. in the event of a power failure

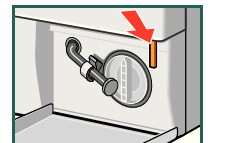


The programme will continue running when the power supply has been restored. However, if the laundry has to be removed, the washing machine door can be opened as follows:



**Risk of scalding.** The detergent solution and laundry may be hot. It may be necessary to first let the laundry cool down. Do not reach into the drum if it is still rotating. Do not open the washing machine door if water can be seen through the glass.

- Set the programme selector to **Off** and pull out the mains plug.
- Drain the detergent solution → page 11.
- Pull the emergency release downwards with a tool and release. Washing machine door can then be opened.



## After-sales service

- If you cannot remedy the fault yourself (What to do if ... → page 12, 13), please contact our after-sales service. We will always find a suitable solution to avoid unnecessary visits by repair personnel.
- The contact details of your nearest after-sales service can be found here or in the after-sales service directory (depending on model).
- GB** 0844 8928979 (Calls from a BT landline will be charged at up to 3 pence per minute. A call set-up fee of up to 6 pence may apply).
- IE** 01450 2655

Please give the after-sales service the product number (E no.) and the production number (FD) of the appliance.

E-Nr. \_\_\_\_\_ FD \_\_\_\_\_

Product number Production number

This information can be found: on the inside of the washing machine door\*/opened service flap\* and rear of the appliance. \*depending on model

Trust the manufacturer's technical expertise. Turn to us. You will thereby ensure that the repairs are performed by trained service personnel equipped with original spare parts



Washing machine **BOSCH**

en Instruction manual

# Your washing machine

**Congratulations** - you have opted for a modern, high-quality domestic appliance manufactured by Bosch. This washing machine is distinguished by its economical water and energy consumption. Each machine that leaves our factory has been inspected thoroughly to ensure that it functions properly and is in perfect condition.

For more information on our products, accessories, replacement parts and services, visit our website [www.bosch-home.com](http://www.bosch-home.com) or contact one of our after-sales service centres.

## Contents

	Page
Intended use .....	1
Programmes .....	1
Setting and adjusting the programme .....	3
Washing .....	3/4
After washing .....	4
Individual settings .....	5/6
Overview of programmes .....	7
Safety instructions .....	8
Consumption values .....	8
Important information .....	9
Insert for liquid detergent .....	10
Care .....	10
Information on the display panel .....	10
Instructions for blockages .....	11
What to do if .....	12/13
Emergency release .....	13
After-sales service .....	13



### Environmental protection / savings tips

- Always fill the washing machine with a maximum amount of laundry for the relevant programme.
- Wash normally soiled laundry without a prewash.
- Instead of **Cottons 90 °C**, select the **Cottons 60 °C** programme and the **Eco Perfect** additional function. Comparable cleaning result with significantly lower energy consumption.
- Measure the detergent according to the manufacturer's instructions and water hardness.
- If the laundry is then dried in the tumble dryer, select the spin speed according to the instructions of the dryer manufacturer.

## Intended use

- For domestic use only
- For washing machine-washable fabrics and hand-washable wool in detergent solution
- To be operated with cold drinking water and commercially available detergents and care products which are suitable for use in washing machines.



- Observe the safety instructions on page 8
- Do not leave children unattended near the washing machine.
- The washing machine is not to be used by children or persons not familiar with the operating instructions.
- Keep pets away from the washing machine.



Read these instructions and the separate installation instructions before operating the washing machine.

## Programmes

Detailed programme overview → page 7.  
The spin speed can be selected individually, depending on the selected programme and programme progress.

<b>Cottons</b>	Hard-wearing fabrics
+ Prewash	Hard-wearing fabrics, prewash at 40 °C
<b>Mixed Load</b>	Different types of laundry
<b>SuperQuick 15'</b>	Extra short programme
Rinse/Spin	for hand-washed items; <b>Rinse Plus</b> button activated; if only using the spin cycle, deactivate the button
<b>Drain</b>	the water used for rinsing if <b>Rinse Hold</b> (= no final spin) is shown
<b>Wool</b>	Hand/machine-washable wool
<b>Delicate/Silk</b>	Delicate washable fabrics
<b>Easy-Care</b>	Easy-care fabrics

## Preparation



Correct installation according to the separate Installation instructions.



### Check the machine

- Never use a damaged machine.
- Inform the after-sales service.

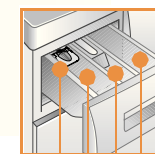
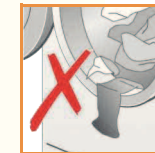


### Connect the mains plug

- Make sure your hands are dry.
- Take hold of the plug only.



### Turn the tap on



Insert for liquid detergent (depending on model), page 10

**Compartment II:** detergent for main wash, water softener, bleach, stain remover

**Compartment** ☼: fabric softener, starch

**Compartment I:** Detergent for prewash

Additional functions	Spin speed	Display panel / options button	Status indicators	Programme
<ul style="list-style-type: none"> <li>Speed Perfect</li> <li>Eco Perfect</li> <li>Reduced Ironing</li> </ul>	<ul style="list-style-type: none"> <li>Spin</li> <li>1400</li> <li>1200</li> <li>800</li> <li>600</li> <li>Rinse Hold</li> </ul>	<ul style="list-style-type: none"> <li>Programme Flow</li> <li>Wash</li> <li>Rinse</li> <li>Spin</li> <li>End</li> </ul>	<ul style="list-style-type: none"> <li>Programme status indicators</li> <li>Wash, Rinse, Spin, End of programme</li> <li>Rinse Hold (= no final spin)</li> </ul>	<ul style="list-style-type: none"> <li>Easy-Care</li> <li>30°</li> <li>40°</li> <li>60°</li> <li>Delicate/Silk 30°</li> <li>Wool 30°</li> <li>Drain</li> <li>Rinse/Spin</li> <li>SuperQ</li> </ul>
			<ul style="list-style-type: none"> <li>1 - 24 (Finished in)</li> </ul>	<ul style="list-style-type: none"> <li>Programme end after</li> </ul>

**Before washing for the first time**  
Run a wash cycle without any laundry → page 9

## Sort and load the laundry

Follow the manufacturer's care information.  
According to the information on the care labels.  
According to type, colour, level of soiling and temperature.  
Do not exceed the maximum load → page 7.

Observe the important information → page 9.  
Insert items of laundry of varying sizes.

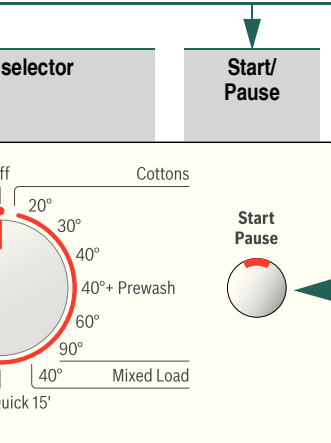
Close the washing machine door. Take care not to trap items of laundry between the washing machine door and the rubber seal.

## Adding detergent and care products

Measure accordingly:  
Amount of laundry, level of soiling, water hardness (ask your water supply company) and manufacturer's instructions.  
Models without insert for liquid detergent:  
Pour liquid detergent into the appropriate dispenser and place in the drum.  
During operation: Open the detergent drawer with care.

**i** Dilute thick fabric softener and conditioner with water.  
This prevents blockages.

## Set and adjust the programme



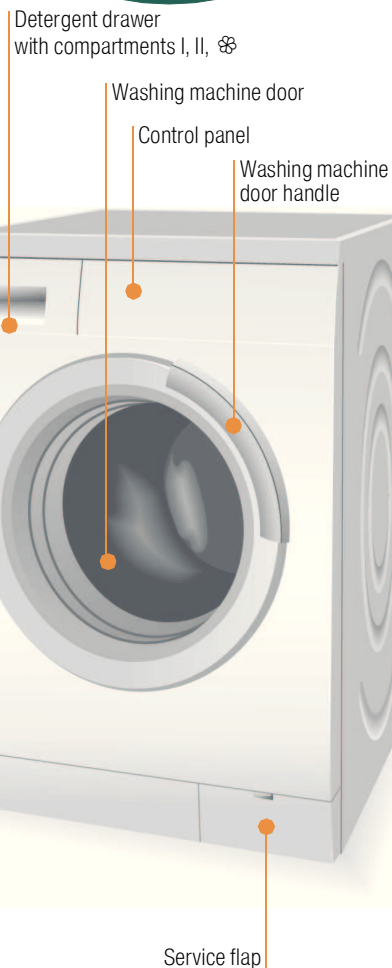
**i** Additional functions and options button  
→ Individual settings, page 5.

**Press Start/Pause**

**i** Programme selector for switching the machine on and off and for selecting the programme. Can be turned in either direction.

**i** All buttons are sensitive and need only to be touched lightly.  
If you press and hold the **Finished in** and spin speed button for a prolonged period, the appliance automatically cycles through the setting options.

# Wash



# Washing



## Switch off

Turn the programme selector to **Off**.

## Turn the tap off

Not required for HydroSafe models →  
Installation instruction notes.

## Remove the laundry

Open the washing machine door and remove the laundry.  
If **Rinse Hold** (= no final spin) active:  
Turn the programme selector to **Drain** or select a spin speed. Press **Start/Pause**.

**i** – Remove any foreign objects - risk of rusting.  
– Leave the washing machine door and detergent drawer open so that any residual water can dry away.

## End of programme when ...

... **Start/Pause** is off and **End** (End of programme) is lit.

**i** If the display panel illumination is off, press any button  
→ Energy saving mode, page 5.

## Cancel the programme

For programmes at high temperatures:  
– Allow laundry to cool: Select **Rinse/Spin**.  
– Press **Start/Pause**.

For programmes at low temperatures:  
– Select **Rinse/Spin** (deactivate the **Rinse Plus** button) or select **Drain**.  
– Press **Start/Pause**.

## Change the programme if...

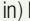
... you have selected the wrong programme by mistake:  
– Reselect the programme.  
– Press **Start/Pause**. The new programme starts from the beginning.

## Add laundry, if... → page 5

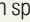
... **Start/Pause** pressed and then **YES** lights up in the display panel. If **NO** is lit, the washing machine door cannot be opened.  
Press the **Start/Pause** button.

# Individual settings


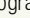
## Options button (Finished in)


When you select a programme, the relevant programme duration is displayed. You can delay the start of the programme before it begins. The "Finished in" time can be set in increments of one hour up to a maximum of 24 hours. Press the  (Finished in) button repeatedly until the desired number of hours is displayed (h = hour). Press **Start/Pause**. It is not possible to make adjustments once the programme has started.

## Options button Spin (spin speed in rpm) / Rinse Hold (= no final spin)

You can change the spin speed shown or select **Rinse Hold** (= no final spin, laundry remains in the water after the last rinse, display panel ). The maximum selectable spin speed depends on the model and on which programme is currently selected.

## Additional functions and overview of programmes, page 7

 **Speed Perfect** For washing in a shorter time with a washing result comparable to that of the standard programme. Maximum load  Overview of programmes, page 7.

 **Eco Perfect** For saving energy with a washing performance comparable to that of the standard programme.

**Reduced Ironing** Special spin sequence with subsequent fluffing. Gentle final spin at reduced speed. Residual moisture in the laundry is increased slightly.

**Rinse Plus** Additional rinse cycle. For areas with very soft water or for further improving the washing result.

## Add laundry

**YES** in the display panel If you want to add additional items of laundry after the programme has started, press **Start/Pause**. The machine checks whether adding laundry is possible.

**YES** lights up: Adding laundry is possible.

**NO** flashes: Wait until **YES** lights up.

*Note:* Do not open the washing machine door until **YES** lights up.

**NO**: Adding laundry is not possible.

*Note:* If the water level and/or the temperature is high or if the machine is spinning, the washing machine door remains locked for safety reasons.

To continue the programme, press the **Start/Pause** button.

## Energy saving mode

The illumination of the display panel goes out after a few minutes and **Start/Pause** flashes. To activate the illumination, press any button.

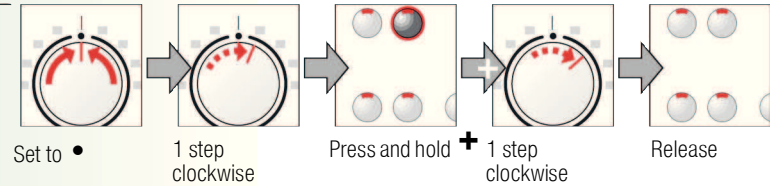
## Start/Pause

For starting the programme and adding laundry.

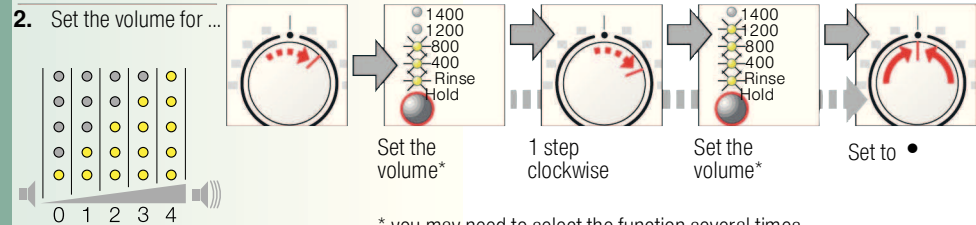
# Individual settings

## Signal

1. Activate the setting mode for signal volume



2. Set the volume for ...



\* you may need to select the function several times

# Overview of programmes → Check the consumption values table on page 8 and the instructions on page 9.



## Additional functions; Options; information

Programmes	°C	max. Type of laundry
<b>Cottons</b>	20, 30, 40, 60, 90 °C	9 kg/ 5 kg*
+ Prewash	40 °C	Hard-wearing fabrics, heat-resistant fabrics made of cotton or linen
<b>Easy-Care</b>	30, 40, 60 °C	3.5 kg Easy-care fabrics made of cotton, linen, synthetic fibres or blended fabrics
<b>Mixed Load</b>	40 °C	Fabrics made of cotton or easy-care fabrics
<b>Delicates/Silk</b>	30 °C	For delicate, washable fabrics, e.g. made of silk, satin, synthetic fibres or blended fabrics (e.g. curtains)
<b>Wool</b>	30 °C	hand or machine washable fabrics made of wool or containing wool
<b>SuperQuick 15'</b>	30 °C	Easy-care fabrics made of cotton, linen, synthetic fibres or blended fabrics

### Additional programmes

\* reduced load with additional function **Speed Perfect**

**Mix** is ideally suitable as a **short programme** in which a **maximum spin speed** can be selected.

Programmes without prewash - place detergent in compartment **II**, programmes with prewash - divide detergent between compartment **I** and **II**.

### Rinse/Spin , Drain

**Speed Perfect\***, **Eco Perfect**, **Reduced Ironing**, **Rinse Plus**, **Rinse Hold** (= no final spin)

**Speed Perfect\***, **Eco Perfect**, **Reduced Ironing**, **Rinse Plus**, **Rinse Hold** (= no final spin)

**Speed Perfect**, **Eco Perfect**, **Reduced Ironing**, **Rinse Plus**, **Rinse Hold** (= no final spin); different types of laundry can be washed together

**Speed Perfect**, **Eco Perfect**, **Reduced Ironing**, **Rinse Plus**, **Rinse Hold** (= no final spin); no spin between the rinse cycles

**Rinse Hold** (= no final spin): Particularly gentle wash programme to prevent shrinkage of laundry, with longer programme breaks (fabrics rest in the detergent solution)

**Rinse Hold** (= no final spin): Short programme, approx. 15 minutes, suitable for lightly soiled laundry

9211 / 9000662722



WAP28360GB

Robert Bosch Hausgeräte GmbH  
Carl-Wery-Str. 34  
81739 München / Deutschland



## Safety instructions

- Read the Instruction manual and Installation instructions and all other information enclosed with the washing machine and use the machine accordingly.
- Retain the documents for subsequent use.

### Risk of electric shock

- Only disconnect the mains cable by pulling on the plug, not on the cable itself.
- Only plug in or disconnect the mains plug if your hands are dry.

### Danger to life

- For worn-out appliances:
- Pull out the mains plug.
  - Cut through the mains cable and remove complete with plug.
  - Destroy the lock on the washing machine door. This will prevent children from locking themselves in and risking their lives.

### Danger of suffocation

- Keep packaging, film and packaging parts out of the reach of children.

### Risk of poisoning

- Keep detergents and care products out of the reach of children.


### Risk of explosion

- Items of laundry pretreated with cleaning agents containing solvents, e.g. stain remover/cleaning solvent may cause an explosion after being loaded into the washing machine.  
Rinse items of laundry thoroughly by hand beforehand.


### Risk of injury

- The washing machine door can become very hot.
- Be careful when emptying hot detergent solution.
- Do not climb onto the washing machine.
- Do not lean on the open washing machine door.
- Do not reach into the drum if it is still rotating.

## Consumption values

Programme	Load	Electricity***	Water***	Programme duration***
<b>Cottons</b> 30 °C*	9 kg	0.37 kWh	81 l	2:38 h
<b>Cottons</b> 40 °C*	9 kg	0.93 kWh	80 l	2:48 h
<b>Cottons</b> 60 °C*	9 kg	1.22 kWh	82 l	2:48 h
<b>Cottons</b> 90 °C	9 kg	2.28 kWh	93 l	2:38 h
<b>Easy-Care</b> 40 °C*	3.5 kg	0.55 kWh	55 l	1:43 h
<b>Mixed Load</b> 40 °C*	3.5 kg	0.47 kWh	49 l	1:01 h
<b>Delicate/Silk</b> 30 °C	2 kg	0.14 kWh	33 l	0:41 h
<b>Wool</b>  30 °C	2 kg	0.16 kWh	40 l	0:40 h

\* Programme setting for testing in accordance with applicable standard EN60456.  
Note on comparative tests: When testing the test programmes, wash the specified load using the maximum spin speed.

Programme	Additional function	Load	Annual energy consumption	Annual water consumption
<b>Cottons</b> 40/60 °C	<b>Eco Perfect</b> 	9/4,5 kg	219 kWh	11900 l

\*\* Programme setting for testing and energy labelling in accordance with EU directive 2010/30/EU with cold water (15 °C).

\*\*\* The values may deviate from the specified values depending on water pressure, water hardness, and inlet temperature, ambient temperature, type, amount and level of laundry soiling, detergent used, fluctuations in the power supply and selection of additional functions.



## Important information



### Before washing for the first time

- Do not put any laundry in the machine. Turn the tap on. Pour into compartment II:
- approx. **1 litre** water
  - detergent (dosage according to the manufacturer's instructions for light soiling and according to water hardness)
- Set the programme selector to **Easy-Care 60 °C** and press **Start/Pause**. At the end of the programme, set the programme selector to **Off**.



### Protecting the laundry and the machine

- When measuring the amount of all detergents/additives and cleaning agents, always check the manufacturer's instructions.
- Empty pockets.
- Look out for metal items (paperclips, etc.).
- Wash delicates in a laundry bag (tights, curtains, underwired bras).
- Fasten zips, do up any buttons.
- Brush sand out of pockets and collars.
- Remove curtain fittings or place in the laundry bag.







### Loading laundry

- Load items of laundry of varying sizes.  
Take care not to trap items of laundry between the washing machine door and the rubber seal.



### Laundry with varying degrees of soiling

- Wash new items of clothing separately.
- |       |   |   |
|-------|---|---|
| light |  | Do not prewash. Where required, select additional function  <b>Speed Perfect</b> . |
|       |  | If necessary, pretreat stains.  |
| heavy |  | Do not load as much laundry. Select programme with prewash.   |



### Soaking

- Load laundry of the same colour.*
- Pour soaking agent/detergent into compartment II in accordance with the manufacturer's instructions. Set programme selector to **Cottons 30 °C** and press **Start/Pause**. After approx. 10 minutes, press **Start/Pause** in order to stop the programme. Once the required soaking time has elapsed, press **Start/Pause** again to continue the programme or to select a different programme.



### Starching

- Laundry must not be treated with fabric softener*
- Starching is possible in all wash programmes if liquid starch is used. Measure starch into the fabric softening compartment  according to the manufacturer's instructions (clean beforehand if necessary).



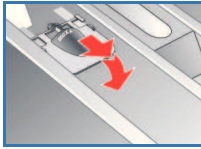
### Dyeing/bleaching

- Dye should only be used in normal household quantities. Salt may damage stainless steel. Check the guidelines provided by the dye manufacturer. Do **not** bleach laundry in the washing machine.

## ! Insert for liquid detergent according to model



- Positioning the insert for measuring the amount of liquid detergent:
- Remove the detergent drawer completely → *page 10*.
  - Slide the insert forwards.
- Do not use the insert (push it upwards):
- for gel-type detergents and washing powders,
  - for programmes with **+Prewash** or option (Finished in)



## Care



- **Risk of electric shock.** *Disconnect the mains plug.*
- **Risk of explosion.** *No solvents.*

### Machine housing, control panel

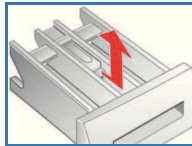
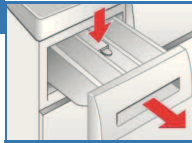
- Remove detergent residue immediately.
- Wipe away with a soft, damp cloth.
- Do not clean with a jet of water.



### Cleaning the detergent drawer ...

... if it contains detergent or fabric softener residues.

1. Pull out, press down the insert and fully remove the drawer.
2. To remove the insert: press the insert upwards from below with your finger.
3. Clean the detergent dispenser tray and insert with water and a brush and dry it.
4. Fit the insert and lock it place (push the cylinder onto the guide pin).
5. Push in the detergent drawer.



Leave the detergent drawer open so that any residual water can evaporate.

### Drum

Leave the washing machine door open so that the drum can dry out.  
Use chlorine-free cleaning agent (no steel wool).

### Descaling Make sure that there is no laundry in the machine.

This should not be necessary if the correct detergent dosage has been used. If it is necessary, however, proceed according to the descaling agent manufacturer's instructions. Suitable descalers can be obtained via our website or from our after-sales service (→ *page 13*).

## Information on the display panel depending on the model

E: 16	Close the washing machine door properly; laundry may be caught.
E: 17, 29	Turn the tap on fully; supply hose kinked/trapped; Clean the filter → <i>page 11</i> , water pressure too low.
E: 18	Detergent solution pump blocked; Clean the detergent solution pump → <i>page 11</i> . Drainage hose/waste pipe blocked; Clean the drainage hose at the siphon → <i>page 11</i> .
E: 23	Water in the base tub, appliance leaking. Call the after-sales service.
Other displays	Switch off the appliance, wait for 5 seconds and switch it back on again. If the display appears again, call the after-sales service → <i>page 13</i> .

## Information about blockages



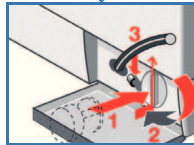
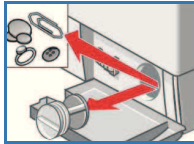
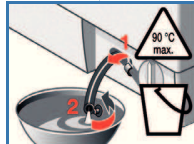
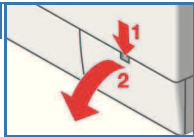
- Risk of scalding.**
- Allow the detergent solution to cool down.
  - Turn off the tap.



### Detergent solution pump

Set the programme selector to **Off** and pull out the mains plug.

1. Open and remove the service flap.
2. Remove the drain hose from the retainer. Remove the sealing cap, allow the detergent solution to flow out. Push the sealing cap back on.
3. Carefully unscrew the pump cover (residual water).
4. Clean the interior, pump cover thread and pump housing (the impeller in the detergent solution pump must be able to rotate).
5. Replace the pump cover and screw it on tightly. The handle points upright. Replace the drain hose in the holder.
6. Refit the service flap and close it.



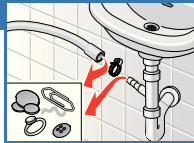
To prevent unused detergent from flowing straight into the drain during the next wash: Pour 1 litre of water into compartment **II** and start the **Drain** programme.



### Drainage hose at the siphon

Set the programme selector to **Off** and pull out the mains plug.

1. Release the hose clamp and carefully pull off the drain hose (residual water).
2. Clean the drainage hose and siphon connecting piece.
3. Reattach the drainage hose and secure the connection with the hose clamp.



### Filter in the water supply

**Risk of electric shock**  
*Do not immerse the HydroSafe safety device in water (it contains an electric valve).*

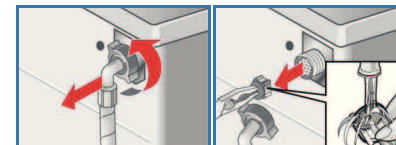
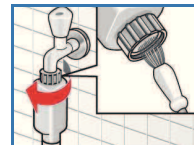
Reduce the water pressure in the supply hose:

1. Turn off the tap.
2. Select any programme (except Rinse/Spin //Drain).
3. Press **Start/Pause**. Let the programme run for approximately 40 seconds.
4. Set the programme selector to **Off**. Pull out the mains plug.

Clean the filter:

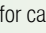

5. Disconnect the hose from the tap. Clean the filter with a small brush.

- and/or** on standard and Aquasecure models:  
Remove the hose from the rear of the appliance, Take out the filter with a pair of pliers and clean it.
6. Connect the hose and check for leaks.





## What to do if...

Water is leaking out.	<ul style="list-style-type: none"> <li>- Attach/replace the drainage hose correctly.</li> <li>- Tighten the screw connection of the supply hose.</li> </ul>
No water supply. Detergent not dispensed.	<ul style="list-style-type: none"> <li>- <b>Start/Pause</b> not pressed?</li> <li>- Tap not turned on?</li> <li>- Filter blocked? Clean the filter → <i>page 11</i>.</li> <li>- Supply hose kinked or trapped?</li> </ul>
Washing machine door cannot be opened.	<ul style="list-style-type: none"> <li>- Safety function active. Programme cancellation? → <i>page 4</i>.</li> <li>- <b>Rinse Hold</b> (= no final spin) selected? → <i>page 3, 4</i>.</li> <li>- Can be opened by emergency release only? → <i>page 13</i>.</li> </ul>
Programme does not start.	<ul style="list-style-type: none"> <li>- Start/<b>Pause</b> pressed or ⏻ (Finished in) time selected?</li> <li>- Washing machine door closed?</li> <li>- Childlock active? Deactivate → <i>page 5</i>.</li> </ul>
Detergent solution is not emptied.	<ul style="list-style-type: none"> <li>- <b>Rinse Hold</b> (= no final spin) selected? → <i>page 3, 4</i>.</li> <li>- Clean the detergent solution pump → <i>page 11</i>.</li> <li>- Clean drain pipe and/or drain hose.</li> </ul>
Water not visible in the drum.	<ul style="list-style-type: none"> <li>- Not a fault - water below the visible area.</li> </ul>
Spin result not satisfactory. Laundry wet/too damp.	<ul style="list-style-type: none"> <li>- Not a fault - imbalance monitoring system has cancelled spinning, due to uneven laundry distribution.</li> <li>- Distribute large and small items of laundry evenly in the drum.</li> <li>- <b>Reduced Ironing</b> selected? → <i>page 5</i>.</li> <li>- Too low a speed selected? → <i>Page 5</i>.</li> </ul>
The programme duration changes during the wash cycle.	<ul style="list-style-type: none"> <li>- Not a fault - the programme cycle is optimised for the particular washing process. That can lead to alterations in the programme duration in the display panel.</li> </ul>
Repeated spin start-up.	<ul style="list-style-type: none"> <li>- Not a fault - imbalance system is equalising the imbalance.</li> </ul>
Residual water in the compartment  for care products.	<ul style="list-style-type: none"> <li>- Not a fault - the action of the care product is not affected.</li> <li>- Clean the insert if necessary → <i>page 10</i>.</li> </ul>
Odour formation in the washing machine.	<ul style="list-style-type: none"> <li>- Run the <b>Cottons 90 °C</b> programme without any laundry in the machine. Use standard detergent for this purpose.</li> </ul>
 status indicator flashes. Detergent may escape from the detergent drawer	<ul style="list-style-type: none"> <li>- Too much detergent used?</li> <li>- Mix 1 tablespoon of fabric softener with ½ litre of water and pour into compartment <b>II</b> (<i>not for outdoor or down fabrics</i>).</li> <li>- Reduce the detergent dosage for the next wash cycle.</li> </ul>
Pronounced generation of noise, vibration and "wandering" during spinning.	<ul style="list-style-type: none"> <li>- Are the appliance feet fixed?</li> <li>- Secure appliance feet → <i>Installation instructions</i>.</li> <li>- Transportation safety devices removed?</li> <li>- Remove transportation safety devices → <i>Installation instructions</i>.</li> </ul>
Noises during spinning and emptying.	<ul style="list-style-type: none"> <li>- Clean the detergent solution pump → <i>page 11</i>.</li> </ul>
Display panel/indicator lamps do not function during operation.	<ul style="list-style-type: none"> <li>- Power cut?</li> <li>- Circuit breakers tripped? Switch circuit breakers back on or replace.</li> <li>- Energy saving mode active?</li> <li>- If the fault recurs, call our after-sales service.</li> </ul>
Programme cycle longer than usual.	<ul style="list-style-type: none"> <li>- Not a fault - the imbalance monitoring system is equalising the imbalance by repeatedly redistributing the laundry.</li> <li>- Not a fault - foam detection system active - adds an additional rinse cycle.</li> </ul>
Detergent residue on the laundry.	<ul style="list-style-type: none"> <li>- In isolated cases, phosphate-free detergents may contain residues which are non-soluble in water.</li> <li>- Select <b>Rinse/Spin</b> or brush down the laundry after washing.</li> </ul>

## What to do if ...

- In Add laundry mode, **Start/Pause** flashes very quickly and a signal sounds
    - Water level too high. Not possible to add laundry. Close the washing machine door immediately if necessary.
    - To continue the programme, press the **Start/Pause** button.
- If you cannot correct a fault yourself (switching on/off) or a repair is required:
- Set the programme selector to **Off** and pull the mains plug out of the socket.
  - Turn off the tap and call our after-sales service → *page 13*.

## Emergency release e.g. in the event of a power failure



The programme will continue running when the power supply has been restored. However, if the laundry has to be removed, the washing machine door can be opened as follows:

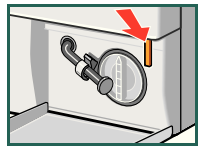
### Risk of scalding.

*The detergent solution and laundry may be hot. It may be necessary to first let the laundry cool down.*

*Do not reach into the drum if it is still rotating.*

*Do not open the washing machine door if water can be seen through the glass.*

1. Set the programme selector to **Off** and pull out the mains plug.
2. Drain the detergent solution → *page 11*.
3. Pull the emergency release downwards with a tool and release. Washing machine door can then be opened.



## After-sales service

● If you cannot remedy the fault yourself (What to do if ..., → *page 12, 13*), please contact our after-sales service. We will always find a suitable solution to avoid unnecessary visits by repair personnel.

● The contact details of your nearest after-sales service can be found here or in the after-sales service directory (depending on model).

- **GB** 0844 8928979 (Calls from a BT landline will be charged at up to 3 pence per minute. A call set-up fee of up to 6 pence may apply).

- **IE** 01450 2655

● Please give the after-sales service the product number (E no.) and the production number (FD) of the appliance.

E-Nr. \_\_\_\_\_ FD \_\_\_\_\_

Product number

Production number

*This information can be found:  
on the inside of the washing machine door\*/  
opened service flap\* and rear of the appliance.  
\*depending on model*

● **Trust the manufacturer's technical expertise.** Turn to us. You will thereby ensure that the repairs are performed by trained service personnel equipped with original spare parts



Washing machine



**BOSCH**

en Instruction manual