

Your washing machine

Congratulations - you have opted for a modern, high-quality domestic appliance manufactured by Bosch. The washing machine is distinguished by its economical water- and energy consumption. Each machine that leaves our factory is inspected thoroughly to ensure that it functions properly and is in perfect condition.

Further information: www.bosch-home.com

Environmentally friendly waste disposal

All packaging must be disposed of in accordance with environmental guidelines. This appliance is certified in accordance with European Directive 2002/96/EEC on waste electrical and electronic equipment (WEEE). This directive provides the framework for the EU-wide collection and reuse of used appliances.

Observe the safety instructions on page 8.

Read these instructions and the separate installation instructions before operating the washing machine.

Contents

	Page
Intended use	1
Programmes	1
Setting and adjusting the programme	3
Washing	3/4
After washing	4
Individual settings	5
Important information	6
Overview of programmes	7
Safety instructions	8
Consumption values	8
Care	9
Information on the display panel	9
Maintenance	10
What to do if...	11

Environmental protection/Conservation tips

- Always fill the washing machine with a maximum amount of laundry for the relevant programme.
- Wash normally soiled laundry without a pre-wash.
- Instead of **Cottons 90 °C**, choose the programme **Eco 60 °C**. Comparable cleaning result with significantly lower energy consumption.
- Measure the detergent according to the manufacturer's instructions and water hardness.
- If the laundry is then dried in the tumble dryer, select the spin speed according to the instructions of the dryer manufacturer.

Intended use

- for domestic use only,
- for machine-washable fabrics and hand-washable wool in detergent solution,
- to be operated with cold drinking water and commercially available detergents and care products which are suitable for use in washing machines.
- when determining the dosage of all washing powders, additives and cleaning agents, you must follow the manufacturer's instructions.

- Do not leave children unattended near the washing machine.
- The washing machine is not to be used by children or persons not familiar with the operating instructions.
- Keep pets away from the washing machine.

Preparation

Correct installation according to the separate Installation instructions.

Checking the machine

- Never use a damaged machine.
- Inform the after-sales service.

Connecting the mains plug

Make sure your hands are dry. Take hold of the plug only.

Turning the tap on

Sorting and loading laundry

Follow the manufacturer's care information. According to the information on the care labels. According to type, colour, soiling and temperature. Do not exceed the maximum load -> page 7.

Follow important instructions -> page 6. Insert large and small items of laundry. Take care not to trap items of laundry between the washing machine door and the rubber seal.

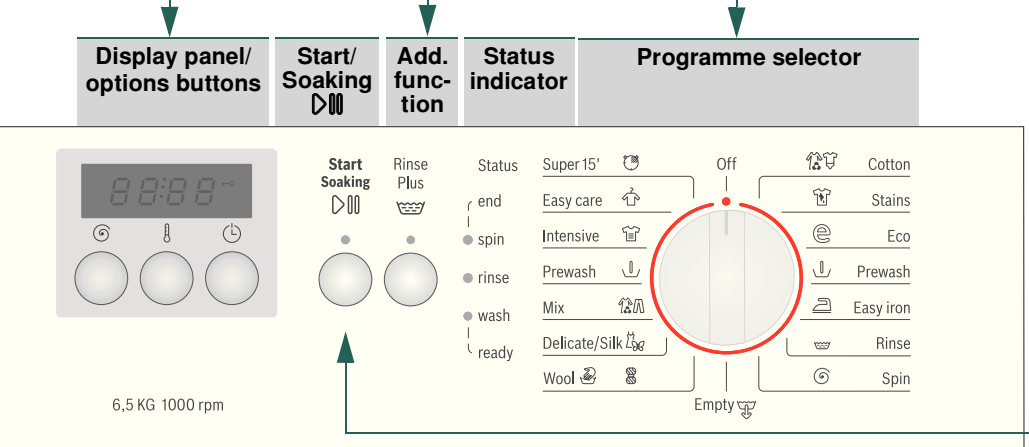
Add detergent and care products

Measure accordingly: Amount of laundry, soiling, water hardness (ask your water supply company) and manufacturer's instructions. Pour liquid detergent into the appropriate dispenser and place in the drum.

Compartment II: Detergent for the main wash, water softener, bleach, stain remover
Compartment ☼: Fabric softener, starch
Compartment I: Detergent for pre-wash

Dilute thick fabric softener and fabric conditioner with water. This prevents blockages.

Setting** and adjusting programmes



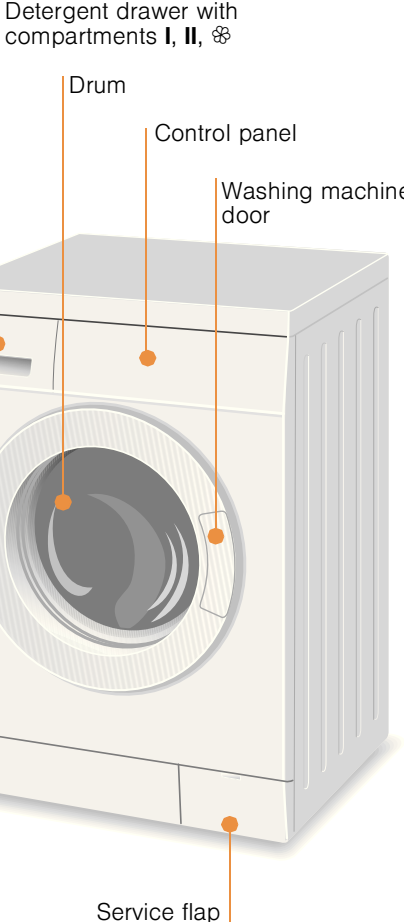
Additional function and options buttons -> Individual settings, page 5.

Programme selector for switching the machine on and off and for selecting the programme. Can be turned in either direction.

Select Start/Soaking

---- - 1000* Ⓢ (rpm)	Select the spin speed (* depending on the model) or --- - (no final spin, laundry soaks in the last rinsing water)
cold - 90 Ⓢ (Temp. °C)	Selecting the temperature
1 - 24h Ⓢ (Start in)	Programme starts in ...

Washing



Removing the washing

Open the washing machine door and remove the washing. If --- - (without final spin) is active: Turn the programme selector to **Empty** ☼ or select the spin speed. Select **Start/Soaking** ▷|||.

- Remove any foreign objects - risk of rusting.
- Leave the washing machine door and detergent drawer open so that any residual water can evaporate.

Turning the tap off

Switching off

Turn the programme selector to **Off**.

End of programme when ...

... the Spin status indicator flashes and **End** is displayed in the display panel.

Changing the programme, if ...

- you have selected the wrong programme by mistake:
 - Reselect the programme.
 - Select **Start/Soaking** ▷|||.

Interrupting the programme

- Programmes at high temperatures:
- Cool washing: Select ☼ **Rinse**. Washing machine door remains locked.
 - Select **Off**.
 - Select Ⓢ **Spin** or **Empty** ☼.
 - Select **Start/Soaking** ▷|||.

Individual settings

Options buttons

The spin speed and temperature can be changed before and during the selected programme runs. The effects depend on the programme progress.

Ⓢ (Spin speed in rpm/no final spin)

You can change the displayed spin speed. The maximum selectable spin speed depends on the model and on which programme is currently selected.

Ⓢ (Temp. °C)

You can change the displayed washing temperature. The maximum washing temperature that can be selected depends on the programme that has been set.

Ⓢ (Start in)

The respective programme duration is displayed by selecting the programme. The programme start can be delayed before the programme begins. The start in- time can be set in hour- steps up to a maximum of 24 hours. Press the Ⓢ button repeatedly until the required number of hours is displayed (h = hour). Select **Start/Soaking** ▷|||. The start in-time begins counting down as soon as the programme starts. This indicated by the flashing indicator lights **Start/Soaking** ▷|||, **wash** and by the flashing apostrophe ' between the number and **h**.

Additional function -> and overview of programmes, see page 7

Rinse Plus ☼ Additional rinse cycle. For areas with very soft water or for further enhancing the spin result.

Start/Soaking ▷|||

For starting or interrupting the programme.

Important information

Protecting the laundry and the machine

- Empty pockets.
- Look out for metal items (paperclips, etc.).
- Wash delicates in a laundry bag (tights, curtains, underwired bras).
- Fasten zips, do up any buttons.
- Brush sand out of pockets and collars.
- Remove curtain fittings or place in the laundry bag.

Laundry with varying degrees of soiling

light	Wash new items of clothing separately. Do not pre-wash. If required, Pre-treat any stains as necessary. Choose programme ☼ Stains .
heavy	Do not load as much laundry. Choose a programme with Ⓢ Prewash. Load laundry of the same colour

Soaking

Pour soaking agent/detergent into compartment **II** in accordance with the manufacturer's instructions. Turn the programme selector to ☼ **Cottons 30 °C** and select **Start/Soaking** ▷|||. After approx. 10 minutes, press **Start/Soaking** ▷||| to pause the programme and start the soaking process. The soaking duration is not suggested to be less than 30 minutes. Once the required soaking time has elapsed, select **Start/Soaking** ▷||| again to continue the programme, or select a different programme. The **Super 15'** Ⓢ programme is not recommended to use the soaking function.

Starching

Laundry must not be treated with fabric softener Starching is possible in all wash programmes if liquid starch is used. Pour the starch in accordance with the manufacturer's instructions into fabric softener compartment ☼ (rinse first if necessary).

Dyeing/bleaching

Dye should only be used in normal household quantities. Salt may damage stainless steel. Always follow the dye manufacturer's instructions! Do **not** use the washing machine for bleaching clothes!

Programmes	°C	max.	Type of laundry	Additional functions: information
Cotton	cold-60 °C			
Stains	cold-90 °C			
Eco	cold-60 °C	6.5 kg	Hard-wearing fabrics, heat-resistant fabrics made of cotton or linen	Rinse Plus
Prewash	cold-90 °C			
Easy-Iron	cold-60 °C			
Easy care	cold-60 °C	3 kg	Easy-care fabrics made of cotton, linen, synthetic fibres or blended fabrics	Rinse Plus
Intensive	cold-60 °C			
Prewash	cold-40 °C			
Mix	cold-40 °C			
Delicate/Silk	cold-40 °C			
Wool	cold-40 °C	2 kg	Hand- or machine-washable fabrics made of wool or containing wool	
Super 15	cold-40 °C		Easy-care fabrics made of cotton, linen, synthetic fibres or blended fabrics	
Additional programmes				
Prewash - add detergent to compartment II ; programmes with Prewash - distribute the detergent between compartments I and II .				

Robert Bosch Hausgeräte GmbH
Carl-Wery-Str. 34
81739 München / Deutschland

WAE20260IN

9000 642 440
0511

Safety instructions

- Read the instruction manual and installation instructions and all other information enclosed with the washing machine and act accordingly.
- Retain the documents for subsequent use.

Risk of electric shock

- Never pull the cable to disconnect the mains plug.
- Never insert/disconnect the mains plug with damp hands.

Danger to life

For worn-out appliances:

- Disconnect the mains plug.
- Sever the mains cable and discard along with the plug.
- Destroy the lock on the washing machine door. This will prevent children from locking themselves in and risking their lives.

Danger of suffocation

- Keep packaging, film and packaging parts out of the reach of children.

Risk of poisoning

Risk of explosion

- Keep detergents and care products out of the reach of children.
- Items of laundry pretreated with cleaning agents containing solvents, e.g. stain remover/cleaning solvent may cause an explosion after being loaded into the washing machine. Rinse items of laundry thoroughly by hand beforehand.

Risk of injury

- The washing machine door can become very hot.
- Be careful when draining hot detergent solution.
- Do not climb onto the washing machine.
- Do not lean on the open washing machine door.
- Do not reach into the drum if it is still rotating.
- Be careful when opening the detergent drawer while the machine is in operation.

Programme	Load	Electricity consumption**	Water**	Programme duration**
Stains 40 °C	6.5 kg	0,65 kWh	56 l	2:51 h
Stains 60 °C	6.5 kg	1,30 kWh	56 l	3:09 h
Eco 60 °C *	6.5 kg	1,19 kWh	47 l	2:35 h
Stains 90 °C	6.5 kg	2,00 kWh	66 l	2:31 h
Easy care 40 °C	3 kg	0.55 kWh	48 l	0:59 h
Mix 30 °C	3 kg	0.35 kWh	48 l	0:52 h
Delicate/Silk 30 °C	2 kg	0.28 kWh	48 l	0:44 h
Wool 30 °C	2 kg	0.20 kWh	32 l	0:53 h

* Programme setting with maximum spin speed for testing according to or in accordance with IEC60456.
** The values deviate from the indicated values depending on water pressure, hardness, and inlet temperature, ambient temperature, type, amount and soiling of the laundry, detergent used, fluctuations in the power supply and selected additional functions.

Care

Before washing for the first time
Do not load any laundry into the machine. Turn on the tap. Add the following to compartment **II**:

- approx. 1 litre water
- detergent (dosage according to the manufacturer's instructions for light soiling and the appropriate degree of water hardness)

Set the programme selector to **Easy-Care** **60 °C** and select **Start**/Soaking . At the end of the programme, turn the programme selector to **Off**.

Machine housing, control panel

- Remove detergent residue immediately.
- Wipe away with a soft, damp cloth.
- Do not clean with a jet of water.

Cleaning the detergent drawer ...
... if it contains detergent or fabric softener residues.

1. Pull out, press insert down, remove drawer completely.
2. Open the cover.
3. Clean the detergent dispenser tray and insert with water and a brush and dry it.
4. Attach the insert and engage (connect the cylinder to the guide pin).
5. Push in the detergent drawer.

Leave the detergent drawer open so that any residual water can evaporate.

Drum
Leave the washing machine door open so that the drum can dry out. Rust stains - use chlorine-free cleaning agent, not steel wool.

Descaling *Ensure there is no laundry in the machine*
Descale the appliance according to the descaler manufacturer's instructions. This should not be necessary if the correct dosage of detergent is used.

Information on the display panel *depending on model*

E2	Motor fault. Call customer service.
E3	Close the washing machine door properly; laundry may be caught.
E5	Open the tap completely, supply hose kinked or trapped; Clean the filter → <i>page 10</i> , Water pressure too low.
E6	Detergent solution pump blocked; Clean the detergent solution pump → <i>page 10</i> , Drainage hose/waste pipe blocked; Clean the drainage hose at the siphon → <i>page 10</i> .
E8	Turn off the tap and call customer service.

Maintenance

Detergent solution pump
Turn the programme selector to **Off** and disconnect the mains plug.

1. Open and remove the service flap.
2. **For models with a drainage hose:** Remove the drainage hose from the retainer and pull it from the housing. Remove the container. Remove the sealing cap, allow the detergent solution to flow out. Replace the sealing cap and place the drainage hose in the retainer.
- 2* **For models without a drainage hose:** Carefully unscrew the pump cover until the detergent solution begins to flow out. When the service flap is half full, close the pump cover and empty the service flap. Repeat the above steps until all the detergent solution has completely drained out.
3. Carefully unscrew the pump cover (residual water).
4. Clean the interior, pump cover thread and pump housing (the impeller in the detergent solution pump must rotate).
5. Replace the pump cover and screw it tightly.
6. Place the service flap back on and close.

To prevent unused detergent from flowing straight into the drain during the next wash: Pour 1 litre of water into compartment **II** and start the **Empty** programme.

Drainage hose at the siphon
Turn the programme selector to **Off** and disconnect the mains plug.

1. Loosen the hose clamp, carefully remove the drainage hose (residual water).
2. Clean the drainage hose and siphon connecting piece.
3. Reattach the drainage hose and secure the connection with the hose clamp.

Filter in the water supply
Reduce the water pressure in the supply hose:

1. Turn off the tap.
2. Select any programme (except **Spin/ Empty**).
3. Select **Start**/Soaking . Let the programme run for approximately 40 seconds.
4. Turn the programme selector to **Off**. Disconnect the mains plug.
5. Disconnect the hose from the tap.
6. Clean the filter using a small brush.
7. Depending on model, remove hose from rear of the appliance and clean filter.
8. Connect the hose and check for leaks.

What to do if ...

Water is leaking out.	<ul style="list-style-type: none">– Attach/replace the drainage hose correctly.– Tighten the screw connection of the supply hose.
No water supply. Detergent not dispensed.	<ul style="list-style-type: none">– Is Start/Soaking not selected?– Tap not turned on?– Filter blocked? Clean the filter → <i>page 10</i>.– Supply hose kinked or trapped?
Washing machine door cannot be opened.	<ul style="list-style-type: none">– Safety function active. Wait approx. 2 minutes.– ---- (without final spin) selected? → <i>page 4</i>.
Programme does not start.	<ul style="list-style-type: none">– Start/Soaking or (Start in) selected?– Washing machine door closed?
Detergent solution is not drained.	<ul style="list-style-type: none">– ---- (without final spin) selected? → <i>page 4</i>.– Clean the detergent solution pump → <i>page 10</i>.– Clean the waste pipe and/or drainage hose.
Water not visible in the drum.	<ul style="list-style-type: none">– Not a fault - water below the visible area.
Unsatisfactory spin result. Laundry wet/too damp.	<ul style="list-style-type: none">– Not a fault - the unbalanced-load detection system has cancelled the spin cycle because of uneven distribution of the laundry. Distribute small and large items of laundry evenly inside the drum.– Speed selected too low? → <i>page 5</i>.
The programme duration changes during the wash cycle.	<ul style="list-style-type: none">– Not a fault – the programme sequence is optimised for the particular wash process. This may result in changes to the programme duration in the display field.
Spin cycle performed several times.	<ul style="list-style-type: none">– Not a fault - unbalanced load detection system adjusts the imbalance.
Residual water in the compartment for care products.	<ul style="list-style-type: none">– Not a fault - the action of the care product is not affected.– Clean the insert if necessary → <i>page 9</i>.
Odour formation in the washing machine.	<ul style="list-style-type: none">– Run programme Stains 90 °C without laundry. Use standard detergent.
Foam may be coming out of the detergent drawer.	<ul style="list-style-type: none">– Too much detergent used? Mix 1 tablespoon of fabric softener with ½ litre of water and pour into dispenser II (<i>not for outdoor and down-filled textiles!</i>).– Reduce the detergent dosage for the next wash cycle.
Intense noise formation, vibrations and “wandering” during the spin cycle.	<ul style="list-style-type: none">– Are the appliance feet fixed? Secure the appliance feet → <i>Installation instructions</i>.– Transportation safety devices removed? Remove the transportation safety devices → <i>Installation instructions</i>.
Noises during spin and drain cycles.	<ul style="list-style-type: none">– Clean detergent-solution pump → <i>page 10</i>.
Display panel/indicator lamps do not function during operation.	<ul style="list-style-type: none">– Power cut?– Fuses triggered? Reset/change the fuses.– If the fault occurs repeatedly, call the after-sales service.
Programme sequence longer than usual.	<ul style="list-style-type: none">– Not a fault - unbalanced load detection system adjusts imbalance by repeatedly distributing the laundry.– Not a fault - foam detection system active - adds an additional rinse cycle.
Detergent residues on the laundry.	<ul style="list-style-type: none">– Occasionally, phosphate-free detergents contain water-insoluble residues.– Select Rinse or brush the laundry after washing.

If you cannot correct a fault yourself (switching on/off) or a repair is required:

- Turn the programme selector to **Off** and remove the mains plug from the socket.
- Turn off the water supply and call the after-sales service → *Installation instructions*.



Washing machine

en Instruction manual

Your washing machine

Congratulations - you have opted for a modern, high-quality domestic appliance manufactured by Bosch. The washing machine is distinguished by its economical water- and energy consumption. Each machine that leaves our factory is inspected thoroughly to ensure that it functions properly and is in perfect condition.

Further information: www.bosch-home.com

Environmentally friendly waste disposal



All packaging must be disposed of in accordance with environmental guidelines. This appliance is certified in accordance with European Directive 2002/96/EEC on waste electrical and electronic equipment (WEEE). This directive provides the framework for the EU-wide collection and reuse of used appliances.



Observe the safety instructions on page 8.

Read these instructions and the separate installation instructions before operating the washing machine.

Contents

	Page
Intended use	1
Programmes	1
Setting and adjusting the programme	3
Washing	3/4
After washing	4
Individual settings	5
Important information	6
Overview of programmes	7
Safety instructions	8
Consumption values	8
Care	9
Information on the display panel	9
Maintenance	10
What to do if...	11



Environmental protection/Conservation tips

- Always fill the washing machine with a maximum amount of laundry for the relevant programme.
- Wash normally soiled laundry without a pre-wash.
- Instead of **Cottons 90°C**, choose the programme **Eco 60°C**. Comparable cleaning result with significantly lower energy consumption.
- Measure the detergent according to the manufacturer's instructions and water hardness.
- If the laundry is then dried in the tumble dryer, select the spin speed according to the instructions of the dryer manufacturer.

Intended use

- for domestic use only,
- for machine-washable fabrics and hand-washable wool in detergent solution,
- to be operated with cold drinking water and commercially available detergents and care products which are suitable for use in washing machines.
- when determining the dosage of all washing powders, additives and cleaning agents, you must follow the manufacturer's instructions.



- Do not leave children unattended near the washing machine.
- The washing machine is not to be used by children or persons not familiar with the operating instructions.
- Keep pets away from the washing machine.

Preparation



Correct installation according to the separate Installation instructions.



Checking the machine

- Never use a damaged machine.
- Inform the after-sales service.

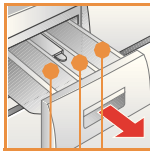
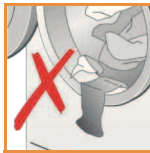


Connecting the mains plug

Make sure your hands are dry. Take hold of the plug only.



Turning the tap on



Compartment II: Detergent for the main wash, water softener, bleach, stain remover

Compartment : Fabric softener, starch

Compartment I: Detergent for pre-wash

Programmes

Detailed overview of programmes -> page 7. Temperature and spin speed can be selected individually, depending on the selected programme and programme progress.

Cotton	
Stains	
Eco	hard-wearing fabrics
Prewash	
Easy-Iron	
Easy-Care	
Intensive	easy-care fabrics
Prewash	
Mix	different types of laundry
Delicate/Silk	delicate washable fabrics
Wool	hand-/machine-washable wool
Super 15'	Short programme
Rinse	with subsequent spin cycle
Spin	washing washed by hand
Empty	the rinsing water if ---- occurs

Display panel/
options buttons

Start/
Soaking

Add.
function

Status
indicator

Pro

Start
Soaking

Rinse
Plus

Status
indicator

6,5 KG 1000 rpm

---- - 1000* (rpm)

Select the spin speed
(* depending on the model) or
- (no final spin, laundry soaks in
last rinsing water)

cold - 90 (Temp. °C)

Selecting the temperature

1 - 24h (Start in)

Programme starts in ...

Before washing for the first time
Wash once without any laundry -> page 9.

Sorting and loading laundry

Follow the manufacturer's care information.
According to the information on the care labels.
According to type, colour, soiling and temperature.
Do not exceed the maximum load -> page 7.

Follow important instructions -> page 6.
Insert large and small items of laundry.

Close the washing machine door. Take care not to trap items of laundry between the washing machine door and the rubber seal.

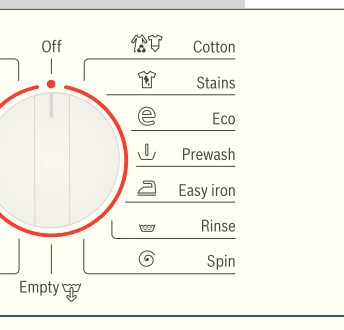
Add detergent and care products

Measure accordingly:
Amount of laundry, soiling, water hardness (ask your water supply company) and manufacturer's instructions.
Put liquid detergent into the appropriate dispenser and place in the drum.

i Dilute thick fabric softener and fabric conditioner with water.
This prevents blockages.

Setting** and adjusting programmes

Programme selector

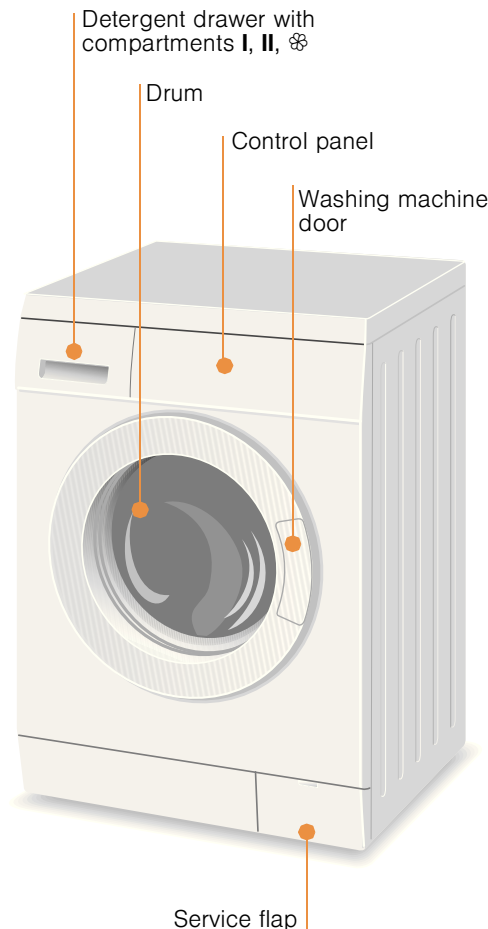


i Additional function and options buttons -> Individual settings, page 5.

i Programme selector for switching the machine on and off and for selecting the programme. Can be turned in either direction.

Select > Start/Soaking

Washing



Removing the washing

Open the washing machine door and remove the washing.
If ---- (without final spin) is active: Turn the programme selector to **Empty** or select the spin speed.
Select **Start/Soaking**.

i - Remove any foreign objects - risk of rusting.
- Leave the washing machine door and detergent drawer open so that any residual water can evaporate.

Turning the tap off

Switching off

Turn the programme selector to **Off**.

End of programme when ...

... the Spin status indicator flashes and **End** is displayed in the display panel.

Changing the programme, if ...

... you have selected the wrong programme by mistake:
- Reselect the programme.
- Select **Start/Soaking**.

Interrupting the programme

Programmes at high temperatures:
- Cool washing: Select **Rinse**.
Washing machine door remains locked.
- Select **Off**.
- Select **Spin** or **Empty**.
- Select **Start/Soaking**.

Individual settings

- Options buttons

The spin speed and temperature can be changed before and during the selected programme runs. The effects depend on the programme progress.

⌚ (Spin speed in rpm/no final spin)

You can change the displayed spin speed. The maximum selectable spin speed depends on the model and on which programme is currently selected.

🌡️ (Temp. °C)

You can change the displayed washing temperature. The maximum washing temperature that can be selected depends on the programme that has been set.

🕒 (Start in)

The respective programme duration is displayed by selecting the programme. The programme start can be delayed before the programme begins. The start in- time can be set in hour- steps up to a maximum of 24 hours. Press the ⌚ button repeatedly until the required number of hours is displayed (h = hour). Select **Start/Soaking** ▷⏸. The start in-time begins counting down as soon as the programme starts. This indicated by the flashing indicator lights **Start/Soaking** ▷⏸, **wash** and by the flashing apostrophe ‘ between the number and **h**.

Additional function

→ and overview of programmes, see *page 7*

Rinse Plus 🌊 Additional rinse cycle. For areas with very soft water or for further enhancing the spin result.

Start/Soaking ▷⏸

For starting or interrupting the programme.

5

Important information

Protecting the laundry and the machine

- Empty pockets.
 - Look out for metal items (paperclips, etc.).
 - Wash delicates in a laundry bag (tights, curtains, underwired bras).
 - Fasten zips, do up any buttons.
 - Brush sand out of pockets and collars.
 - Remove curtain fittings or place in the laundry bag.

Laundry with varying degrees of soiling

	Wash new items of clothing separately.
light	Do not pre-wash. If required,
	Pre-treat any stains as necessary. Choose programme 🧼 Stains .
heavy	Do not load as much laundry. Choose a programme with ⬇️ Prewash.

Soaking

Load laundry of the same colour

Pour soaking agent/detergent into compartment **II** in accordance with the manufacturer's instructions. Turn the programme selector to 🧵👕 **Cottons 30 °C** and select **Start/Soaking** ▷⏸. After approx. 10 minutes, press **Start/Soaking** ▷⏸ to pause the programme and start the soaking process. The soaking duration is not suggested to be less than 30 minutes. Once the required soaking time has elapsed, select **Start/Soaking** ▷⏸ again to continue the programme, or select a different programme. The **Super 15'** 🕒 programme is not recommended to use the soaking function.

Starching

Laundry must not be treated with fabric softener

Starching is possible in all wash programmes if liquid starch is used. Pour the starch in accordance with the manufacturer's instructions into fabric softener compartment 🌀 (rinse first if necessary).

Dyeing/bleaching

Dye should only be used in normal household quantities. Salt may damage stainless steel. Always follow the dye manufacturer's instructions! Do **not** use the washing machine for bleaching clothes!

6

Overview of programmes

-> Refer to the table of consumption values on page 8 and notes on page 6.

Programmes	°C	max.	Type of laundry	Additional functions; information
Cotton	cold - 60 °C			
Stains	cold - 90 °C			
Eco	cold - 60 °C	6.5 kg	Hard-wearing fabrics, heat-resistant fabrics made of cotton or linen	Rinse Plus
Prewash,	cold - 90 °C			
Easy-Iron	cold - 60 °C			
Easy care		3 kg	Easy-care fabrics made of cotton, linen, synthetic fibres or blended fabrics	Rinse Plus
Intensive	cold - 60 °C			
Prewash				
Mix	cold - 40 °C		Fabrics made of cotton or easy-care fabrics	Rinse Plus ; different types of laundry can be washed together
Delicate/Silk	cold - 40 °C		For delicate, washable fabrics, e.g. made of silk, satin, synthetic fibres or blended fabrics (e.g. curtains)	Rinse Plus ; No spin between rinse cycles
Wool	cold - 40 °C	2 kg	Hand- or machine-washable fabrics made of wool or containing wool	Particularly gentle wash programme to prevent shrinkage of laundry. Longer programme breaks (fabrics rest in the detergent solution)
Super 15'	cold - 40 °C		Easy-care fabrics made of cotton, linen, synthetic fibres or blended fabrics	Short programme, approx. 15 minutes, suitable for refreshing
Additional programmes				
Rinse, Spin, Empty				

I Programmes without Prewash - add detergent to compartment **II**, programmes with Prewash - distribute the detergent between compartments **I** and **II**.

Robert Bosch Hausgeräte GmbH
Carl-Wery-Str. 34
81739 München / Deutschland

WAE20260IN

9000 642 440
0511



Safety instructions

- Read the instruction manual and installation instructions and all other information enclosed with the washing machine and act accordingly.
- Retain the documents for subsequent use.

Risk of electric shock

- Never pull the cable to disconnect the mains plug.
- Never insert/disconnect the mains plug with damp hands.

Danger to life

For worn-out appliances:

- Disconnect the mains plug.
- Sever the mains cable and discard along with the plug.
- Destroy the lock on the washing machine door. This will prevent children from locking themselves in and risking their lives.

Danger of suffocation

- Keep packaging, film and packaging parts out of the reach of children.

Risk of poisoning

Risk of explosion

- Keep detergents and care products out of the reach of children.
- Items of laundry pretreated with cleaning agents containing solvents, e.g. stain remover/cleaning solvent may cause an explosion after being loaded into the washing machine. Rinse items of laundry thoroughly by hand beforehand.

Risk of injury

- The washing machine door can become very hot.
- Be careful when draining hot detergent solution.
- Do not climb onto the washing machine.
- Do not lean on the open washing machine door.
- Do not reach into the drum if it is still rotating.
- Be careful when opening the detergent drawer while the machine is in operation.

Consumption values

Programme	Load	Electricity consumption**	Water**	Programme duration**
Stains 40 °C	6.5 kg	0,65 kWh	56 l	2:51 h
Stains 60 °C	6.5 kg	1,30 kWh	56 l	3:09 h
Eco 60 °C *	6.5 kg	1,19 kWh	47 l	2:35 h
Stains 90 °C	6.5 kg	2,00 kWh	66 l	2:31 h
Easy care 40 °C	3 kg	0.55 kWh	48 l	0:59 h
Mix 30 °C	3 kg	0.35 kWh	48 l	0:52 h
Delicate/Silk 30 °C	2 kg	0.28 kWh	48 l	0:44 h
Wool 30 °C	2 kg	0.20 kWh	32 l	0:53 h

* Programme setting with maximum spin speed for testing according to or in accordance with IEC60456.

** The values deviate from the indicated values depending on water pressure, hardness, and inlet temperature, ambient temperature, type, amount and soiling of the laundry, detergent used, fluctuations in the power supply and selected additional functions.

Care



- Risk of electric shock. Disconnect the mains plug.
- Risk of explosion. No solvents.



Before washing for the first time

Do not load any laundry into the machine. Turn on the tap.

Add the following to compartment **II**:

- approx. 1 litre water
- detergent (dosage according to the manufacturer's instructions for light soiling and the appropriate degree of water hardness)

Set the programme selector to **Easy-Care** **60 °C** and select **Start/Soaking** . At the end of the programme, turn the programme selector to **Off**.



Machine housing, control panel

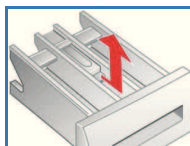
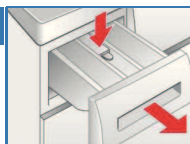
- Remove detergent residue immediately.
- Wipe away with a soft, damp cloth.
- Do not clean with a jet of water.



Cleaning the detergent drawer ...

... if it contains detergent or fabric softener residues.

1. Pull out, press insert down, remove drawer completely.
2. Open the cover.
3. Clean the detergent dispenser tray and insert with water and a brush and dry it.
4. Attach the insert and engage (connect the cylinder to the guide pin).
5. Push in the detergent drawer.



Leave the detergent drawer open so that any residual water can evaporate.



Drum

Leave the washing machine door open so that the drum can dry out.
Rust stains - use chlorine-free cleaning agent, not steel wool.



Descaling

Ensure there is no laundry in the machine

Descal the appliance according to the descaler manufacturer's instructions. This should not be necessary if the correct dosage of detergent is used.

Information on the display panel

depending on model

E2	Motor fault. Call customer service.
E3	Close the washing machine door properly; laundry may be caught.
E5	Open the tap completely, supply hose kinked or trapped; Clean the filter -> page 10, Water pressure too low.
E6	Detergent solution pump blocked; Clean the detergent solution pump -> page 10. Drainage hose/waste pipe blocked; Clean the drainage hose at the siphon -> page 10.
E8	Turn off the tap and call customer service.

Maintenance



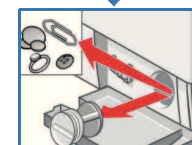
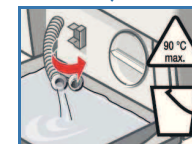
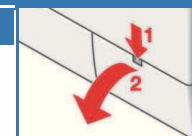
- Risk of scalding. Allow the detergent solution to cool down.
- Turn off the tap.



Detergent solution pump

Turn the programme selector to **Off** and disconnect the mains plug.

1. Open and remove the service flap.
2. **For models with a drainage hose:** Remove the drainage hose from the retainer and pull it from the housing. Remove the container. Remove the sealing cap, allow the detergent solution to flow out. Replace the sealing cap and place the drainage hose in the retainer.
- 2* **For models without a drainage hose:** Carefully unscrew the pump cover until the detergent solution begins to flow out. When the service flap is half full, close the pump cover and empty the service flap. Repeat the above steps until all the detergent solution has completely drained out.
3. Carefully unscrew the pump cover (residual water).
4. Clean the interior, pump cover thread and pump housing (the impeller in the detergent solution pump must rotate).
5. Replace the pump cover and screw it tightly.
6. Place the service flap back on and close.



To prevent unused detergent from flowing straight into the drain during the next wash:
Pour 1 litre of water into compartment **II** and start the **Empty** programme.



Drainage hose at the siphon

Turn the programme selector to **Off** and disconnect the mains plug.

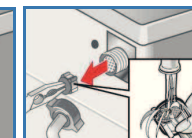
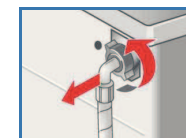
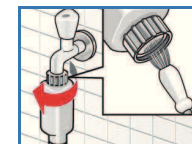
1. Loosen the hose clamp, carefully remove the drainage hose (residual water).
2. Clean the drainage hose and siphon connecting piece.
3. Reattach the drainage hose and secure the connection with the hose clamp.



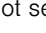
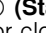
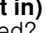


Filter in the water supply

Reduce the water pressure in the supply hose:

1. Turn off the tap.
2. Select any programme (except **Spin/ Empty**).
3. Select **Start/Soaking** . Let the programme run for approximately 40 seconds.
4. Turn the programme selector to **Off**. Disconnect the mains plug.
5. Disconnect the hose from the tap.
6. Clean the filter using a small brush.
7. Depending on model, remove hose from rear of the appliance and clean filter.
8. Connect the hose and check for leaks.



What to do if ...

Water is leaking out.	<ul style="list-style-type: none"> – Attach/replace the drainage hose correctly. – Tighten the screw connection of the supply hose.
No water supply.	<ul style="list-style-type: none"> – Is Start/Soaking  not selected?
Detergent not dispensed.	<ul style="list-style-type: none"> – Tap not turned on? – Filter blocked? Clean the filter → <i>page 10</i>. – Supply hose kinked or trapped?
Washing machine door cannot be opened.	<ul style="list-style-type: none"> – Safety function active. Wait approx. 2 minutes. – ---- (without final spin) selected? → <i>page 4</i>.
Programme does not start.	<ul style="list-style-type: none"> – Start/Soaking  or  (Start in) selected? – Washing machine door closed?
Detergent solution is not drained.	<ul style="list-style-type: none"> – ---- (without final spin) selected? → <i>page 4</i>. – Clean the detergent solution pump → <i>page 10</i>. – Clean the waste pipe and/or drainage hose.
Water not visible in the drum.	<ul style="list-style-type: none"> – Not a fault - water below the visible area.
Unsatisfactory spin result.	<ul style="list-style-type: none"> – Not a fault - the unbalanced-load detection system has cancelled the spin cycle because of uneven distribution of the laundry.
Laundry wet/too damp.	<ul style="list-style-type: none"> – Distribute small and large items of laundry evenly inside the drum. – Speed selected too low? → <i>page 5</i>.
The programme duration changes during the wash cycle.	<ul style="list-style-type: none"> – Not a fault – the programme sequence is optimised for the particular wash process. This may result in changes to the programme duration in the display field.
Spin cycle performed several times.	<ul style="list-style-type: none"> – Not a fault - unbalanced load detection system adjusts the imbalance.
Residual water in the compartment for care products.	<ul style="list-style-type: none"> – Not a fault - the action of the care product is not affected. – Clean the insert if necessary → <i>page 9</i>.
Odour formation in the washing machine.	<ul style="list-style-type: none"> – Run programme  Stains 90 °C without laundry. Use standard detergent.
Foam may be coming out of the detergent drawer.	<ul style="list-style-type: none"> – Too much detergent used? Mix 1 tablespoon of fabric softener with ½ litre of water and pour into dispenser II (<i>not for outdoor and down-filled textiles!</i>). – Reduce the detergent dosage for the next wash cycle.
Intense noise formation, vibrations and “wandering” during the spin cycle.	<ul style="list-style-type: none"> – Are the appliance feet fixed? Secure the appliance feet → <i>Installation instructions</i>. – Transportation safety devices removed? Remove the transportation safety devices → <i>Installation instructions</i>.
Noises during spin and drain cycles.	<ul style="list-style-type: none"> – Clean detergent-solution pump → <i>page 10</i>.
Display panel/indicator lamps do not function during operation.	<ul style="list-style-type: none"> – Power cut? – Fuses triggered? Reset/change the fuses. – If the fault occurs repeatedly, call the after-sales service.
Programme sequence longer than usual.	<ul style="list-style-type: none"> – Not a fault - unbalanced load detection system adjusts imbalance by repeatedly distributing the laundry. – Not a fault - foam detection system active - adds an additional rinse cycle.
Detergent residues on the laundry.	<ul style="list-style-type: none"> – Occasionally, phosphate-free detergents contain water-insoluble residues. – Select  Rinse or brush the laundry after washing.

If you cannot correct a fault yourself (switching on/off) or a repair is required:

- Turn the programme selector to **Off** and remove the mains plug from the socket.
- Turn off the water supply and call the after-sales service → *Installation instructions*.



en Instruction manual