



Safety instructions

- Read the Instruction manual and Installation instructions and all other information enclosed with the washing machine and act accordingly.
- Retain the documents for subsequent use.

Risk of electric shock

- Never pull the cable to disconnect the mains plug.
- Only insert/pull out the mains plug with dry hands.

Danger to life

For worn-out appliances:

- Disconnect the mains plug.
- Sever the mains cable and discard along with the plug.
- Destroy the lock on the washing machine door. This will prevent children from locking themselves in and risking their lives.

Danger of suffocation

Risk of poisoning

- Keep packaging, film and packaging parts out of the reach of children.
- Keep detergents and care products out of the reach of children.

Risk of explosion

- Items of laundry pretreated with cleaning agents containing solvents, e.g. stain remover/cleaning solvent may cause an explosion after being loaded into the washing machine.
- Rinse items of laundry thoroughly by hand beforehand.

Risk of injury

- The washing machine door can become very hot.
- Be careful when draining hot detergent solution.
- Do not climb onto the washing machine.
- Do not lean on the open washing machine door.
- Do not reach into the drum if it is still rotating.

Consumption values

Programme	Load	Power ***	Water***	Programme duration***
Resistentes/Algod. (Cottons) 30 °C*	8 kg	0.35 kWh	76 l	2:20 h
Resistentes/Algod. (Cottons) 40 °C*	8 kg	0.97 kWh	76 l	2:30 h
Resistentes/Algod. (Cottons) 60 °C*	8 kg	1.36 kWh	76 l	2:40 h
Resistentes/Algod. (Cottons) 90 °C	8 kg	2.34 kWh	87 l	2:30 h
Sintéticos (Easy-care) 40 °C*	3.5 kg	0.55 kWh	55 l	1:43 h
Mix 40 °C*	3.5 kg	0.47 kWh	49 l	1:01 h
Delicado/Seda (Delicate/silk) 30 °C	2 kg	0.14 kWh	35 l	0:41 h
Lana/Lã (Wool) 30 °C	2 kg	0.16 kWh	40 l	0:40 h

* Programme setting for testing in accordance with applicable standard EN60456.
Note on comparative tests: When testing the test programmes, wash the specified load using the maximum spin speed.

Programme	Additional function	Load	Annual energy consumption	Annual water consumption
Resistentes/Algod. (Cottons) 40/60 °C	EcoPerfect	8/4 kg	189 kWh	10500 l

** Programme setting for testing and energy labelling in accordance with EU directive 2010/30/EU with cold water (15 °C).
*** The values deviate from the indicated values depending on water pressure, water hardness, and water inlet temperature, ambient temperature, type, amount and soiling of the laundry, detergent used, fluctuations in the power supply and selected additional functions.



Important information



Before washing for the first time

Do not put any laundry in the machine. Turn the tap on. Pour into compartment **II**:

- approx. **1 litre** water
- detergent (dosage according to the manufacturer's instructions for light soiling and according to water hardness)

Set programme selector to **Sintéticos** (Easy-care) **60 °C** and press **Inicio**/Pausa+Carga (**Start**/Pause+reload). At the end of the programme, turn the programme selector to Off.



Protecting the laundry and the machine

- When determining the dosage of all washing powders, additives and cleaning agents, you must follow the manufacturer's instructions.
- Empty pockets.
- Look out for metal items (paperclips, etc.).
- Wash delicates in a laundry bag (tights, curtains, underwired bras).
- Fasten zips, do up any buttons.
- Brush sand out of pockets and collars.
- Remove curtain fittings or place in the laundry bag.



Loading laundry

Load items of laundry of varying sizes.
Take care not to trap items of laundry between the washing machine door and the rubber seal.



Laundry with varying degrees of soiling

Wash new items of clothing separately.

light		Do not prewash. If required, select the Turbo Perfect .
		Pretreat any stains as necessary.
heavy		Do not load as much laundry. Select the programme with Prewash.



Soaking

Load laundry of the same colour

Pour soaking agent/detergent into compartment **II** in accordance with the manufacturer's instructions. Set programme selector to **Resistentes/Algod.** (Cottons) **30 °C** and press **Inicio**/Pausa+Carga (**Start**/Pause+reload). After approx. 10 minutes, press **Inicio**/Pausa+Carga (**Start**/Pause+reload) to stop the programme. Once the required soaking time has elapsed, press **Inicio**/Pausa+Carga (**Start**/Pause+reload) again to continue the programme, or change to a different programme.



Starching

Laundry must not be treated with fabric softener

Starching is possible in all wash programmes if liquid starch is used. Pour starch into the fabric softener compartment in accordance with the manufacturer's instructions (rinse first if necessary).



Dyeing/bleaching

Dye should only be used in normal household quantities. Salt may damage stainless steel. Always follow the dye manufacturer's instructions. Do **not** use the washing machine for bleaching clothes.



Down

Laundry must not be treated with fabric softener.

Only wash down-filled clothing, not feather cushions or bedding. Wash large items separately. Be sparing with washing detergent. Dry laundry in the tumble dryer afterwards to prevent the down from clumping.



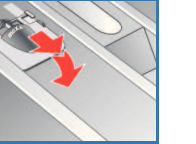
Insert for liquid detergent

Position the insert for dispensing liquid detergent:

- Remove the detergent drawer completely → **page 10**.
- Slide the insert forwards.

Do not use the insert (slide upwards):

- for gel detergents and washing powder,
- for programmes with **+Prelav.** (Prewash) or option (Finished in)



Care

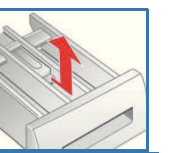
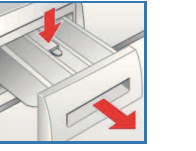
Machine housing, control panel

- Remove detergent residue immediately.
- Wipe with a soft, damp cloth.
- Do not clean with a jet of water.

Cleaning the detergent drawer ...

... if it contains detergent or fabric softener residues.

- Pull out, press insert down, remove drawer completely.
- To remove the insert: press the insert upwards from below with your finger.
- Clean the detergent dispenser tray and insert with water and a brush and dry it.
- Fit the insert and engage (connect the cylinder to the guide pin).
- Push in the detergent drawer.



Leave the detergent drawer open so that any residual water can evaporate.



Drum

Leave the washing machine door open so that the drum can dry out.
Use chlorine-free cleaning agent, not steel wool.

Descaling

Ensure there is no laundry in the machine

This should not be necessary if the correct detergent dosage has been used. If it is necessary, however, proceed according to the descaling agent manufacturer's instructions. Suitable descalers can be obtained via our website or from our after-sales service (→ **page 13**).

Information on the display panel

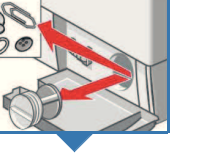
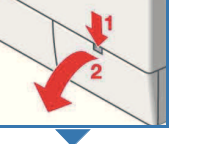
	Close the washing machine door properly; laundry may be caught.
E: 17, 29	Open the tap completely, supply hose kinked or trapped; Clean the filter → page 11 , water pressure too low.
E: 18	– Detergent solution pump blocked; Clean the detergent solution pump → page 11 . – Drainage hose/waste pipe blocked; Clean the drainage hose at the siphon → page 11 .
E: 23	Water in the base tub, appliance leaking. Call the after-sales service.
	Childproof lock activated: to deactivate → page 5 .
Other displays	Switch off the appliance, wait for 5 seconds and switch it back on. If the display appears again, call the after-sales service → page 13 .

Information about blockages

Detergent solution pump

Turn the programme selector to **Stop** (Off) and disconnect the mains plug.

- Open and remove the service flap.
- Take the drainage hose out of the holder. Remove the sealing cap, allow the detergent solution to flow out. Push the sealing cap back on.
- Unscrew the pump cover carefully (residual water).
- Clean the interior, pump cover thread and pump housing (the impeller in the detergent solution pump must be able to rotate).
- Replace the pump cover and screw it tightly in place. The handle points upright. Replace the drainage hose in the holder.
- Refit the service flap and close it.

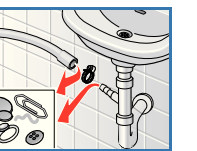


To prevent unused detergent from flowing straight into the drain during the next wash: Pour 1 litre of water into compartment **II** and start the (Empty) programme.

Drainage hose at the siphon

Turn the programme selector to **Stop** (Off) and disconnect the mains plug.

- Loosen the hose clamp, remove the drainage hose carefully (residual water).
- Clean the drainage hose and siphon connecting piece.
- Reattach the drainage hose and secure the connection with the hose clamp.

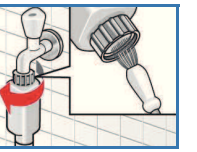


Filter in the water supply

Risk of electric shock
Do not immerse the HydroSafe safety device in water (it contains an electric valve).

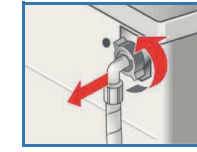
Reduce the water pressure in the supply hose:

- Turn off the tap.
- Select any programme (except for /Centrif.adicional (Rinse/Spin)/ (Empty)).
- Press **Inicio**/Pausa+Carga (**Start**/Pause+reload). Let the programme run for approximately 40 seconds.
- Turn the programme selector to **Stop** (Off). Disconnect the mains plug.



Clean the filter:

- Disconnect the hose from the tap. Clean the filter using a small brush.



and/or for Standard and Aqua-Secure models: Remove the hose from the back of the appliance. Remove the filter using pliers and clean the filter.

- Connect the hose and check for leaks.

What to do if...

- Water is leaking out.
 - Attach/replace the drainage hose correctly.
 - Tighten the screw connection of the supply hose.
- No water supply. Detergent not dispensed.
 - Inicio**/Pausa+Carga (**Start**/Pause+reload) not pressed?
 - Tap not turned on?
 - Filter blocked? Clean the filter → **page 11**.
 - Supply hose kinked or trapped?
- Washing machine door cannot be opened.
 - Safety function active. Programme stopped? → **page 4**.
 - (Rinse stop = no Final spin) selected? → **page 3, 4**.
 - Can be opened by emergency release only? → **page 13**.
- Programme does not start.
 - Inicio**/Pausa+Carga (**Start**/Pause+reload) pressed or (Finished in) time selected?
 - Washing machine door closed?
 - Childproof lock active? Deactivate → **page 5**.
- Detergent solution does not empty.
 - (Rinse stop = no Final spin) selected? → **page 3, 4**.
 - Clean the detergent solution pump → **page 11**.
 - Clean the waste pipe and/or drainage hose.
- Water not visible in the drum.
 - Not a fault - water below the visible area.
- Spin result not satisfactory. Laundry wet/too damp.
 - No fault - the unbalanced-load detection system interrupted spinning, uneven laundry distribution. Distribute large and small items of laundry evenly in the drum.
 - (Easy-Iron) selected? → **page 5**.
 - Speed selected too low? → **page 5**.
- The programme duration changes during the washing cycle.
 - Not a fault - the programme sequence is optimised for the relevant washing process. This can cause changes in the programme duration in the display panel.
- Spin cycle runs several times.
 - Not a fault - unbalanced-load detection system is adjusting the imbalance.
- Residual water in the compartment for care products.
 - Not a fault - the action of the care product is not affected.
 - Clean the insert if necessary → **page 10**.
- Odour formation in the washing machine.
 - Run the **Resistentes/Algod.** (Cottons) **90 °C** programme without laundry. Use standard detergent.
- Status display flashes. Detergent may escape from the detergent drawer.
 - Too much detergent used?
 - Mix 1 tablespoon of fabric softener with ½ litre of water and pour into compartment **II** (not with outdoor, sportswear or down fabrics).
 - Reduce the detergent dosage for the next wash cycle.
- Loud spinning, vibrations and "walking" during the spin cycle.
 - Are the appliance feet fixed? Secure appliance feet → **Installation instructions**.
 - Transportation safety devices removed? Remove transportation safety devices → **Installation instructions**.
- Noises during spinning and emptying.
 - Clean the detergent solution pump → **page 11**.
- Display panel/indicator lamps do not function during operation.
 - Power cut?
 - Circuit breakers/fuses tripped/blown? Reset/replace the fuses.
 - Energy saving mode active?
 - If the fault occurs repeatedly, call the after-sales service.
- Programme sequence longer than usual.
 - Not a fault - unbalanced-load detection system is adjusting the imbalance by repeatedly redistributing the laundry.
 - Not a fault - foam detection system active - adds an additional rinse cycle.
- Detergent residues on the laundry.
 - Occasionally, phosphate-free detergents contain water-insoluble residues.
 - Select /Centrif. adicional (Rinse/Spin) or brush out the laundry after washing.

What to do if...

- In Add laundry mode, **Inicio**/Pausa+Carga (**Start**/Pause+reload) flashes very quickly and a signal sounds
 - Water level too high. Not possible to add laundry. Close the washing machine door immediately if necessary.
 - To continue the programme, press **Inicio**/Pausa+Carga (**Start**/Pause+reload).
- If you cannot correct a fault yourself (switching on/off) or a repair is required:
 - Turn the programme selector to **Stop** (Off) and remove the mains plug from the socket.
 - Turn off the tap and call the after-sales service → **page 13**.

Emergency release

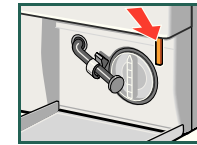
The programme starts running again the power has been restored. However, if the laundry has to be removed, the washing machine door can be opened as follows:



Risk of scalding!

The detergent solution and laundry may be hot. If possible, leave to cool down. Do not reach into the drum if it is still rotating. Do not open the washing machine door if water can be seen through the glass.

- Turn the programme selector to **Stop** (Off) and disconnect the mains plug.
- Drain the detergent solution → **page 11**.
- Pull the emergency release downwards with a tool and release. Washing machine door can then be opened.



After-sales service

- If you cannot remedy the fault yourself (What to do if ..., → **page 12, 13**), contact our after-sales service. We will always find a suitable solution to avoid unnecessary visits by repair personnel.
- The contact details of your nearest after-sales service can be found here or in the after-sales service directory (model-dependent).
 - GB** 0844 8928979 (Calls from a BT landline will be charged at up to 3 pence per minute. A call set-up fee of up to 6 pence may apply).
 - IE** 01450 2655
- Please give the After-sales service the product number (E no.) and the production number (FD) of the appliance.

E-Nr. _____ FD _____

This information can be found: on the inside of the washing machine door*/the service flap* (after opening it) and the rear of the appliance. *model-dependent

Product number Production number

- Trust the manufacturer's competence.** Turn to us. You will thereby ensure that the repairs are performed by trained service personnel equipped with original spare parts.



Washing machine

en Instruction manual

Your washing machine

Congratulations - you have chosen a modern, high-quality domestic appliance manufactured by Bosch. A distinctive feature of the washing machine is its economical water and energy consumption.

Each machine that leaves our factory is inspected thoroughly to ensure that it functions properly and is in perfect condition.

For further information on our products, accessories, spares and services, consult our website www.bosch-home.com or contact any of our customer service centres.

Contents

	Page
Intended use	1
Programmes	1
Setting and adjusting the programme	3
Washing	3/4
After washing	4
Individual settings	5/6
Overview of programmes	7
Safety instructions	8
Consumption values	8
Important information	9
Insert for liquid detergent	10
Care	10
Information on the display panel	10
Instructions for blockages	11
What to do if	12/13
Emergency release	13
After-sales service	13

Environmental protection/Conservation tips

- Always fill the washing machine with a maximum amount of laundry for the relevant programme.
- Wash normally soiled laundry without a prewash.
- Instead of **Resistentes/Algod.** (Cottons) **90 °C**, select the **Resistentes/Algod.** (Cottons) **60 °C** programme and the additional **Eco Perfect** function. Comparable cleaning result with significantly lower energy consumption.
- Measure the detergent according to the manufacturer's instructions and water hardness.
- If the laundry is then dried in the tumble dryer, select the appropriate spin speed according to the instructions of the dryer manufacturer.

Intended use

- for domestic use only
- for machine-washable fabrics and hand-washable wool in detergent solution,
- To be operated with cold drinking water and commercially available detergents and care products which are suitable for use in washing machines.

- Do not leave children unattended near the washing machine
- The washing machine is not to be used by children or persons not familiar with the operating instructions
- Keep pets away from the washing machine.
- Observe the safety instructions on page 8

Read these instructions and the separate installation instructions before operating the washing machine

Programmes	
Detailed overview of programmes → page 7. Temperature and spin speed can be selected individually, depending on the selected programme and programme progress.	
Resistentes/Algod. (Cottons)	Hard-wearing fabrics
+ Prelav. (Prewash)	Hard-wearing fabrics, prewash at 30 °C
Sintéticos (Easy-care)	Easy-care fabrics
+ Prelav. (Prewash)	Easy-care fabrics, prewash at 30 °C
Mix	Different types of laundry
Delicado/Seda (Delicate/silk)	Delicate washable fabrics
Lana/Lã (Wool)	Hand/machine-washable wool
/Centrif.adicional (Rinse/spin)	Laundry washed by hand, Skin Care (WaterPlus) button activated; if only using the spin cycle, deactivate the button
(Empty)	the rinsing water when (Rinse stop = no Final spin)
Rápido 15' (SuperQuick)	SuperQuick programme
Clinic Wash (Sensitive)	Hard-wearing fabrics, longer washing and additional rinsing for particularly sensitive skin
Sport	Fabrics made from microfibre
Camisas/Blusas (Shirts/Blouses)	Non-iron shirts
Plumas/Penas (Down)	Washable down-filled fabrics → page 9
R.de cama (Dark-coloureds)	Dark-coloured fabrics

Preparation

Install correctly, according to the separate Installation instructions.

Check the machine

- Never use a damaged machine.
- Inform the after-sales service.

Connect the mains plug

- Make sure your hands are dry.
- Take hold of the plug only.

Turn the tap on

Insert for liquid detergent (depending on model), page 10

Compartment II: Detergent for main wash, water softener, bleach, stain remover

Compartment : fabric softener, starch

Compartment I: detergent for prewash

Additional functions

Turbo Perfect Eco Perfect Fácil Skin Care

Display panel/ Options buttons

Programme selection

- 90 °C	(Temperature)	Select the temperature (= cold)
1 - 24h	(Finished in)	Programme end after
- 1600*	(rpm)	Select the spin speed (* model-dependent, spin, laundry remains in the water display panel).
Status indicators -		Programme sequence indicators: Wash, rinse, spin, programme duration
		Childlock → page 5
		Open the washing machine door,

Before washing for the first time
Run a wash cycle without any laundry → page 9

Sorting and loading the laundry

Follow the manufacturer's care information.
According to the information on the care labels.
According to type, colour, soiling and temperature.
Do not exceed the maximum load → page 7.

Observe the important information → page 9.

Insert items of laundry of varying sizes.
Close the washing machine door. Take care not to trap items of laundry between the washing machine door and the rubber seal.

Adding detergent and care products

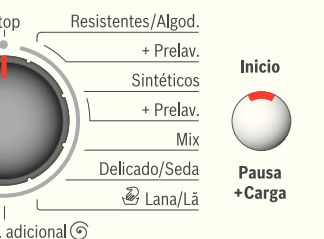
Measure accordingly:
Amount of laundry, level of soiling, water hardness (ask your water supply company) and manufacturer's instructions.
For models without insert for liquid detergent:
Pour liquid detergent into the appropriate dispenser and place in the drum.
During operation: Open the detergent drawer with care.

i Dilute thick fabric softener and fabric conditioner with water.
This prevents blockages.

Set** and adjust the programme

ector

**Start/
Pause+reload**



d)

dependent) or ☹ (Rinse Hold = no Final
after the final rinse, - - - appears in the

eration or end (- ☹ -)

add laundry → page 4, 5

i **If the ☹ symbol is lit, the Childlock is active → Deactivate it, page 5.

Additional functions and options buttons
→ Individual settings, page 5

Press Inicio/Pausa+Carga (Start/Pause+reload)

i Programme selector for switching the machine on and off and for selecting the programme. Can be turned in either direction.

i All buttons are sensitive and need only to be touched lightly.
Press and hold the ☹ (Ready in) option button for an automatic run through all setting options.

Washing

Detergent drawer
with compartments I, II, ☹

Washing machine door

Control panel

Washing machine
door handle



Service flap

Washing

Switching off

Turn the programme selector to **Stop** (Off).

Turning off the tap

Not required for HydroSafe models →
Refer to Installation instructions.

Removing the washing

Open the washing machine door and remove the washing.
If ☹ (Rinse stop = no final spin) is active: Set programme selector to ☹ (Empty) or ☹/Centrif. adicional ☹ (Rinse/Spin) (deactivate the **Skin Care** (WaterPlus) button). Select the spin speed if necessary. Press **Inicio/Pausa+Carga (Start/Pause+reload)**.

i – Remove any foreign objects - risk of rusting.
– Leave the washing machine door and detergent drawer open so that any residual water can dry away.

Programme has ended when...

... the **Inicio/Pausa+Carga** (Start/Pause+reload) button is off and - ☹ - appears in the display panel.

i If the display panel lighting is off, press any button
→ Energy saving mode, page 5.

Cancelling the programme

Programmes at high temperatures:

- Cool washing: Select ☹/Centrif. adicional ☹ (Rinse/Spin).
- Press **Inicio/Pausa+Carga (Start/Pause+reload)**.

Programmes at lower temperatures:

- Select ☹/Centrif. adicional ☹ (Rinse/Spin) (deactivate the **Skin Care** (WaterPlus) button) or ☹ (Empty).
- Press **Inicio/Pausa+Carga (Start/Pause+reload)**.

Change the programme, if...

... you have selected the wrong programme by mistake:

- Reselect the programme.
- Press **Inicio/Pausa+Carga (Start/Pause+reload)**. The new programme starts from the beginning.

Adding laundry, if ... → page 5

... **Inicio/Pausa+Carga** (Start/Pause+reload) is pressed and then both **YES** + ☹ symbols are lit. If **NO** is lit, the washing machine door cannot be opened.
Press the **Inicio/Pausa+Carga (Start/Pause+reload)** button.

Individual settings

- Options buttons**

The spin speed and temperature can be changed either before or while the selected programme runs. The effect this has will depend on how far the programme has already run.
- (Temperature °C)**

You can change the displayed washing temperature. The maximum washing temperature that can be selected depends on the programme that has been set.
- (Finished in)**

When you select the programme, the relevant programme duration is displayed. You can delay the start of the programme before it begins. The "Finished in" time can be set in increments of one hour up to a maximum of 24 hours. Press the (Finished in) button repeatedly until the desired number of hours is displayed (h = hour). Press **Inicio/Pausa+Carga** (**Start/Pause+reload**).
- (spin speed in rpm)** / **(Rinse Hold = no Final spin)**

You can change the spin speed shown or select (Rinse Hold = no Final spin, laundry remains in the water after the final rinse, --- appears in the display panel). You can change the spin speed shown. The maximum selectable spin speed depends on the model and on which programme is currently selected.
- Additional functions** → overview of programmes, *page 7*

	Turbo Perfect	For washing in a shorter time with a washing outcome comparable to that of the standard programme. Maximum load → Overview of programmes, <i>page 7</i> .
	Eco Perfect	For saving energy with a washing performance comparable to that of the standard programme.
	Fácil (Easy-Iron)	Special spin sequence with subsequent fluffing. Gentle Final spin at reduced spin speed. Residual moisture in the laundry slightly increased.
	Skin Care (WaterPlus)	Additional rinse cycle. Increased water level. For areas with very soft water or for further enhancing the washing result.
- Childlock**

in the display panel

You can lock the washing machine to prevent the functions you have set from being changed inadvertently.
ON/OFF: After the start/end of the programme, press and hold **Inicio/Pausa+Carga** (**Start/Pause+reload**) for approx. 5 seconds.
Note: The childlock can remain activated until you start the next programme, even after switching off the machine.
Then you can deactivate the childlock before starting the programme and activate it again as necessary once the programme has started.
Note:
– The symbol is lit: Childlock active.
– The symbol flashes: Childlock active and then the programme selector is altered. To prevent the programme from stopping, turn the programme selector back to the original programme, the symbol is lit again.
- Reload**

+ in the display panel

If you want to add additional items of laundry after the programme has started, press the **Inicio/Pausa+Carga** (**Start/Pause+reload**) button. The machine checks whether adding laundry is possible.
 + are lit: Adding laundry is possible.
 flashing: Wait until + are lit.
Note: Only open the washing machine door when **both** the + symbols are lit.
: It is not possible to add laundry.
Note: for safety reasons, the washing machine door remains locked when the water level and/or temperature is high, or during spinning.
To continue the programme, press the **Inicio/Pausa+Carga** (**Start/Pause+reload**) button.
- Energy saving mode**

If the washing machine is switched on and is not operated for several minutes before the programme starts or at the end of the programme, the display panel light goes out and the **Inicio/Pausa+Carga** (**Start/Pause+reload**) button flashes. Press any button to turn the light back on.

Individual settings

- Audible signal**

1. Activate the setting mode for signal volume

Set to • 1 step, the display panel lights up Press and hold + 1 step, release 3
2. Set the volume for ...

Button signals Information signals

Set the volume* skip 1 step Set the volume* Set to •

* you may need to select the function several times.
- Inicio/Pausa+Carga (Start/Pause+reload)**

To start the programme or to subsequently load additional laundry, and to activate/deactivate the childlock.

Overview of programmes → Check the consumption values table on page 8 and the instructions on page 9.



Additional functions; Options; information

Programmes °C max. Type of laundry

Resistentes/Algod. (Cottons) + Prelav. (Prewash)	** - 90 °C	8 kg/ 5 kg*	Hard-wearing fabrics, heat-resistant fabrics made of cotton or linen	🔄 Turbo Perfect *, 🌿 Eco Perfect , 🔄 Fácil (Easy-Iron), Skin Care (WaterPlus), 🔄 (Rinse stop)
	** - 60 °C		Hard-wearing fabrics made of cotton or linen	🔄 Turbo Perfect *, 🌿 Eco Perfect , 🔄 Fácil (Easy-Iron), Skin Care (WaterPlus), 🔄 (Rinse stop); for particularly sensitive skin, longer wash cycle at selected temperature, higher water level, additional rinse cycle
Sintéticos (Easy-care) + Prelav. (Prewash)	** - 60 °C		Easy-care fabrics made of cotton, linen, synthetic fibres or blended fabrics	🔄 Turbo Perfect , 🌿 Eco Perfect , 🔄 Fácil (Easy-Iron), Skin Care (WaterPlus), 🔄 (Rinse stop)
	** - 40 °C	3.5 kg	Fabrics made of cotton or easy-care fabrics	🔄 Turbo Perfect , 🌿 Eco Perfect , 🔄 Fácil (Easy-Iron), Skin Care (WaterPlus), 🔄 (Rinse stop); different types of laundry can be washed together
R.de cama (Dark-coloureds)	** - 40 °C		Dark-coloured fabrics made of cotton and dark easy-care fabrics	🔄 Turbo Perfect , 🌿 Eco Perfect , 🔄 Fácil (Easy-Iron), Skin Care (WaterPlus), 🔄 (Rinse stop); reduced Rinse + spin and Final spin
Camisas/Blusas (Shirts/Blouses)	** - 60 °C		Non-iron shirts made of cotton, linen, synthetic fibres or blended fabrics	🔄 Turbo Perfect , 🌿 Eco Perfect , 🔄 Fácil (Easy-Iron), Skin Care (WaterPlus), 🔄 (Rinse stop); spin only, hang up to drip dry
Plumas/Penas (Down)	** - 60 °C		machine-washable fabrics filled with down (no cushions or bedding)	🔄 Turbo Perfect , 🌿 Eco Perfect , Skin Care (WaterPlus), 🔄 (Rinse stop); wash large items separately, be sparing with washing detergent → page 9
Delicado/Seda (Delicate/silk)	** - 40 °C	2 kg	For delicate, washable fabrics, e.g. made of silk, satin, synthetic fibres or blended fabrics (e.g. curtains)	🔄 Turbo Perfect , 🌿 Eco Perfect , 🔄 Fácil (Easy-Iron), Skin Care (WaterPlus), 🔄 (Rinse stop); no spin between rinse cycles
Lana/Lã (Wool)	** - 40 °C		Hand or machine-washable fabrics made of wool or containing wool	🔄 (Rinse stop); particularly gentle wash programme to prevent shrinkage of laundry. Longer programme breaks (fabrics rest in the detergent solution)
Rápido 15' (SuperQuick)	** - 40 °C		Easy-care fabrics made of cotton, linen, synthetic fibres or blended fabrics	🔄 (Rinse stop); Short programme, approx. 15 minutes, suitable for lightly soiled laundry
Sports	** - 40 °C		Fabrics made from microfibre	🔄 Turbo Perfect , 🌿 Eco Perfect , 🔄 Fácil (Easy-Iron), Skin Care (WaterPlus), 🔄 (Rinse stop); do not treat laundry with fabric softener

Additional programmes

🔄/Centrif. adicional 🔄 (Rinse/Spin), 🔄 (Empty)

* reduced load when using the 🔄 **Turbo Perfect**.

i As a **short programme, Mix 40°C**, with a **maximum spin speed, is ideal**.

Programmes without prewash - add detergent to compartment **II**, programmes with prewash - distribute the detergent between compartments **I** and **II**.

0111 / 9000623521



WAS24420EE
WAS2442XEE

Robert Bosch Hausgeräte GmbH
Carl-Wery-Str. 34
81739 München / Deutschland



Safety instructions

- Read the Instruction manual and Installation instructions and all other information enclosed with the washing machine and act accordingly.
- Retain the documents for subsequent use.

Risk of electric shock

- Never pull the cable to disconnect the mains plug.
- Only insert/pull out the mains plug with dry hands.

Danger to life

- For worn-out appliances:
- Disconnect the mains plug.
 - Sever the mains cable and discard along with the plug.
 - Destroy the lock on the washing machine door. This will prevent children from locking themselves in and risking their lives.

Danger of suffocation

- Keep packaging, film and packaging parts out of the reach of children.

Risk of poisoning

- Keep detergents and care products out of the reach of children.

Risk of explosion

- Items of laundry pretreated with cleaning agents containing solvents, e.g. stain remover/cleaning solvent may cause an explosion after being loaded into the washing machine.
- Rinse items of laundry thoroughly by hand beforehand.

Risk of injury

- The washing machine door can become very hot.
- Be careful when draining hot detergent solution.
- Do not climb onto the washing machine.
- Do not lean on the open washing machine door.
- Do not reach into the drum if it is still rotating.

Consumption values

Programme	Load	Power ***	Water***	Programme duration***
Resistentes/Algod. (Cottons) 30 °C*	8 kg	0.35 kWh	76 l	2:20 h
Resistentes/Algod. (Cottons) 40 °C*	8 kg	0.97 kWh	76 l	2:30 h
Resistentes/Algod. (Cottons) 60 °C*	8 kg	1.36 kWh	76 l	2:40 h
Resistentes/Algod. (Cottons) 90 °C	8 kg	2.34 kWh	87 l	2:30 h
Sintéticos (Easy-care) 40 °C*	3.5 kg	0.55 kWh	55 l	1:43 h
Mix 40 °C*	3.5 kg	0.47 kWh	49 l	1:01 h
Delicado/Seda (Delicate/silk) 30 °C	2 kg	0.14 kWh	35 l	0:41 h
🌀 Lana/Lã (Wool) 30 °C	2 kg	0.16 kWh	40 l	0:40 h

* Programme setting for testing in accordance with applicable standard EN60456.
Note on comparative tests: When testing the test programmes, wash the specified load using the maximum spin speed.

Programme	Additional function	Load	Annual energy consumption	Annual water consumption
Resistentes/Algod. (Cottons) 40/60 °C	EcoPerfect 🌀**	8/4 kg	189 kWh	10500 l

** Programme setting for testing and energy labelling in accordance with EU directive 2010/30/EU with cold water (15 °C).
*** The values deviate from the indicated values depending on water pressure, water hardness, and water inlet temperature, ambient temperature, type, amount and soiling of the laundry, detergent used, fluctuations in the power supply and selected additional functions.



Important information



Before washing for the first time

Do not put any laundry in the machine. Turn the tap on. Pour into compartment **II**:

- approx. **1 litre** water
 - detergent (dosage according to the manufacturer's instructions for light soiling and according to water hardness)
- Set programme selector to **Sintéticos** (Easy-care) **60 °C** and press **Inicio**/Pausa+Carga (**Start**/Pause+reload). At the end of the programme, turn the programme selector to Off.



Protecting the laundry and the machine

- When determining the dosage of all washing powders, additives and cleaning agents, you must follow the manufacturer's instructions.
- Empty pockets.
- Look out for metal items (paperclips, etc.).
- Wash delicates in a laundry bag (tights, curtains, underwired bras).
- Fasten zips, do up any buttons.
- Brush sand out of pockets and collars.
- Remove curtain fittings or place in the laundry bag.



Loading laundry

Load items of laundry of varying sizes.

Take care not to trap items of laundry between the washing machine door and the rubber seal.



Laundry with varying degrees of soiling

		Wash new items of clothing separately.
light		Do not prewash. If required, select the Turbo Perfect .
		Pretreat any stains as necessary.
heavy		Do not load as much laundry. Select the programme with Prewash.



Soaking

Load laundry of the same colour

Pour soaking agent/detergent into compartment **II** in accordance with the manufacturer's instructions. Set programme selector to **Resistentes/Algod. (Cottons) 30 °C** and press **Inicio**/Pausa+Carga (**Start**/Pause+reload). After approx. 10 minutes, press **Inicio**/Pausa+Carga (**Start**/Pause+reload) to stop the programme. Once the required soaking time has elapsed, press **Inicio**/Pausa+Carga (**Start**/Pause+reload) again to continue the programme, or change to a different programme.



Starching

Laundry must not be treated with fabric softener

Starching is possible in all wash programmes if liquid starch is used. Pour starch into the fabric softener compartment in accordance with the manufacturer's instructions (rinse first if necessary).



Dyeing/bleaching

Dye should only be used in normal household quantities. Salt may damage stainless steel. Always follow the dye manufacturer's instructions. Do **not** use the washing machine for bleaching clothes.



Down

Laundry must not be treated with fabric softener.


Only wash down-filled clothing, not feather cushions or bedding. Wash large items separately. Be sparing with washing detergent. Dry laundry in the tumble dryer afterwards to prevent the down from clumping.

Insert for liquid detergent model-dependent

Position the insert for dispensing liquid detergent:

- Remove the detergent drawer completely → *page 10*.
- Slide the insert forwards.

Do not use the insert (slide upwards):

- for gel detergents and washing powder,
- for programmes with **+Prelav.** (Prewash) or option  (Finished in)



Care



- **Risk of electric shock!** *Disconnect the mains plug.*
- **Risk of explosion!** *No solvents.*

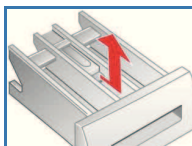
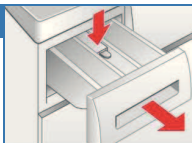
Machine housing, control panel

- Remove detergent residue immediately.
- Wipe with a soft, damp cloth.
- Do not clean with a jet of water.

Cleaning the detergent drawer ...

... if it contains detergent or fabric softener residues.

1. Pull out, press insert down, remove drawer completely.
2. To remove the insert: press the insert upwards from below with your finger.
3. Clean the detergent dispenser tray and insert with water and a brush and dry it.
4. Fit the insert and engage (connect the cylinder to the guide pin).
5. Push in the detergent drawer.



Leave the detergent drawer open so that any residual water can evaporate.

Drum



Leave the washing machine door open so that the drum can dry out.
Use chlorine-free cleaning agent, not steel wool.

Descaling

Ensure there is no laundry in the machine

This should not be necessary if the correct detergent dosage has been used. If it is necessary, however, proceed according to the descaling agent manufacturer's instructions. Suitable descalers can be obtained via our website or from our after-sales service (→ *page 13*).

Information on the display panel model-dependent

 flashing	Close the washing machine door properly; laundry may be caught.
E:17, 29	Open the tap completely, supply hose kinked or trapped; Clean the filter → <i>page 11</i> , water pressure too low.
E:18	– Detergent solution pump blocked; Clean the detergent solution pump → <i>page 11</i> . – Drainage hose/waste pipe blocked; Clean the drainage hose at the siphon → <i>page 11</i> .
E:23	Water in the base tub, appliance leaking. Call the after-sales service.
	Childproof lock activated: to deactivate → <i>page 5</i> .
Other displays	Switch off the appliance, wait for 5 seconds and switch it back on. If the display appears again, call the after-sales service → <i>page 13</i> .

Information about blockages



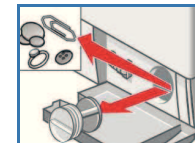
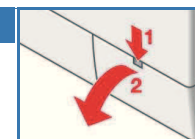
- Risk of scalding!**
- Allow the detergent solution to cool down.
- Turn off the tap.




Detergent solution pump

Turn the programme selector to **Stop** (Off) and disconnect the mains plug.

1. Open and remove the service flap.
2. Take the drainage hose out of the holder. Remove the sealing cap, allow the detergent solution to flow out. Push the sealing cap back on.
3. Unscrew the pump cover carefully (residual water).
4. Clean the interior, pump cover thread and pump housing (the impeller in the detergent solution pump must be able to rotate).
5. Replace the pump cover and screw it tightly in place. The handle points upright. Replace the drainage hose in the holder.
6. Refit the service flap and close it.



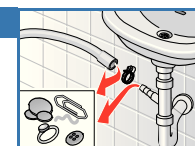
To prevent unused detergent from flowing straight into the drain during the next wash: Pour 1 litre of water into compartment **II** and start the  (Empty) programme.



Drainage hose at the siphon

Turn the programme selector to **Stop** (Off) and disconnect the mains plug.

1. Loosen the hose clamp, remove the drainage hose carefully (residual water).
2. Clean the drainage hose and siphon connecting piece.
3. Reattach the drainage hose and secure the connection with the hose clamp.






Filter in the water supply



Risk of electric shock

Do not immerse the HydroSafe safety device in water (it contains an electric valve).

Reduce the water pressure in the supply hose:

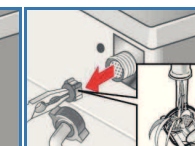
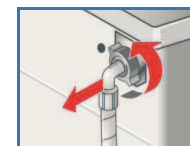
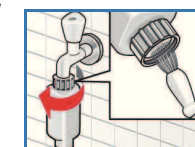
1. Turn off the tap.
2. Select any programme (except for /Centrif.adicional  (Rinse/Spin)// (Empty)).
3. Press **Inicio/Pausa+Carga** (**Start**/Pause+reload). Let the programme run for approximately 40 seconds.
4. Turn the programme selector to **Stop** (Off). Disconnect the mains plug.

Clean the filter:

5. Disconnect the hose from the tap. Clean the filter using a small brush.

and/or for Standard and Aqua-Secure models:
Remove the hose from the back of the appliance,
Remove the filter using pliers and clean the filter.

6. Connect the hose and check for leaks.



What to do if...

Water is leaking out.	<ul style="list-style-type: none"> – Attach/replace the drainage hose correctly. – Tighten the screw connection of the supply hose.
No water supply. Detergent not dispensed.	<ul style="list-style-type: none"> – Inicio/Pausa+Carga (Start/Pause+reload) not pressed? – Tap not turned on? – Filter blocked? Clean the filter → <i>page 11</i>. – Supply hose kinked or trapped?
Washing machine door cannot be opened.	<ul style="list-style-type: none"> – Safety function active. Programme stopped? → <i>page 4</i>. – ☒ (Rinse stop = no Final spin) selected? → <i>page 3, 4</i>. – Can be opened by emergency release only? → <i>page 13</i>.
Programme does not start.	<ul style="list-style-type: none"> – Inicio/Pausa+Carga (Start/Pause+reload) pressed or ⌚ (Finished in) time selected? – Washing machine door closed? – Childproof lock active? Deactivate → <i>page 5</i>.
Detergent solution does not empty.	<ul style="list-style-type: none"> – ☒ (Rinse stop = no Final spin) selected? → <i>page 3, 4</i>. – Clean the detergent solution pump → <i>page 11</i>. – Clean the waste pipe and/or drainage hose.
Water not visible in the drum.	<ul style="list-style-type: none"> – Not a fault - water below the visible area.
Spin result not satisfactory. Laundry wet/too damp.	<ul style="list-style-type: none"> – No fault - the unbalanced-load detection system interrupted spinning, uneven laundry distribution. Distribute large and small items of laundry evenly in the drum. – Fácil (Easy-Iron) selected? → <i>page 5</i>. – Speed selected too low? → <i>page 5</i>.
The programme duration changes during the washing cycle.	<ul style="list-style-type: none"> – Not a fault - the programme sequence is optimised for the relevant washing process. This can cause changes in the programme duration in the display panel.
Spin cycle runs several times.	<ul style="list-style-type: none"> – Not a fault - unbalanced-load detection system is adjusting the imbalance.
Residual water in the compartment for care products.	<ul style="list-style-type: none"> – Not a fault - the action of the care product is not affected. – Clean the insert if necessary → <i>page 10</i>.
Odour formation in the washing machine.	<ul style="list-style-type: none"> – Run the Resistentes/Algod. (Cottons) 90 °C programme without laundry. Use standard detergent.
Status display flashes. Detergent may escape from the detergent drawer.	<ul style="list-style-type: none"> – Too much detergent used? Mix 1 tablespoon of fabric softener with ½ litre of water and pour into compartment II (<i>not with outdoor, sportswear or down fabrics</i>). – Reduce the detergent dosage for the next wash cycle.
Loud spinning, vibrations and “walking” during the spin cycle.	<ul style="list-style-type: none"> – Are the appliance feet fixed? Secure appliance feet → <i>Installation instructions</i>. – Transportation safety devices removed? Remove transportation safety devices → <i>Installation instructions</i>.
Noises during spinning and emptying.	<ul style="list-style-type: none"> – Clean the detergent solution pump → <i>page 11</i>.
Display panel/indicator lamps do not function during operation.	<ul style="list-style-type: none"> – Power cut? – Circuit breakers/fuses tripped/blown? Reset/replace the fuses. – Energy saving mode active? – If the fault occurs repeatedly, call the after-sales service.
Programme sequence longer than usual.	<ul style="list-style-type: none"> – Not a fault - unbalanced-load detection system is adjusting the imbalance by repeatedly redistributing the laundry. – Not a fault - foam detection system active - adds an additional rinse cycle.
Detergent residues on the laundry.	<ul style="list-style-type: none"> – Occasionally, phosphate-free detergents contain water-insoluble residues. – Select /Centrif. adicional (Rinse/Spin) or brush out the laundry after washing.

What to do if...

<ul style="list-style-type: none"> – In Add laundry mode, Inicio/Pausa+Carga (Start/Pause+reload) flashes very quickly and a signal sounds 	<ul style="list-style-type: none"> – Water level too high. Not possible to add laundry. Close the washing machine door immediately if necessary. – To continue the programme, press Inicio/Pausa+Carga (Start/Pause+reload).
<p>If you cannot correct a fault yourself (switching on/off) or a repair is required:</p> <ul style="list-style-type: none"> – Turn the programme selector to Stop (Off) and remove the mains plug from the socket. – Turn off the tap and call the after-sales service → <i>page 13</i>. 	

Emergency release *e.g. in the event of a power cut*



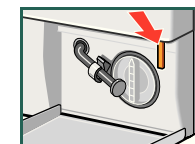
The programme starts running again the power has been restored. However, if the laundry has to be removed, the washing machine door can be opened as follows:



Risk of scalding!

*The detergent solution and laundry may be hot. If possible, leave to cool down.
Do not reach into the drum if it is still rotating.
Do not open the washing machine door if water can be seen through the glass.*

1. Turn the programme selector to **Stop** (Off) and disconnect the mains plug.
2. Drain the detergent solution → *page 11*.
3. Pull the emergency release downwards with a tool and release.
Washing machine door can then be opened.



After-sales service

If you cannot remedy the fault yourself (What to do if ..., → *page 12, 13*), contact our after-sales service. We will always find a suitable solution to avoid unnecessary visits by repair personnel.

The contact details of your nearest after-sales service can be found here or in the after-sales service directory (model-dependent).

- **GB** 0844 8928979 (Calls from a BT landline will be charged at up to 3 pence per minute.
A call set-up fee of up to 6 pence may apply).
- **IE** 01450 2655

Please give the After-sales service the product number (E no.) and the production number (FD) of the appliance.

E-Nr. _____ FD _____

Product number

Production number

*This information can be found:
on the inside of the washing machine door*/the service flap*
(after opening it) and the rear of the appliance.
model-dependent

Trust the manufacturer's competence. Turn to us.
You will thereby ensure that the repairs are performed by trained service personnel equipped with original spare parts.



Washing machine



BOSCH

en Instruction manual