

## Solving Minor Problems Yourself

Problem	Possible Causes	Solution
Iron does not work or is not heating up	Temperature control (H) set to minimum	Turn the temperature control to a higher position
	Connection problems	Check that the plug is inserted into the mains socket correctly
	The automatic shut-off system has been activated (*)	Move the iron gently from side to side to re-start
Iron is not steaming	There is no water in the tank	Fill the water tank
	The temperature control (H) is set too low, the pump does not work because the temperature limiter is working	Set the temperature control within the steam "☺" area, between "••" and "max"
Water is dripping from the holes in the soleplate	You have pressed the shot of steam button (E) repeatedly without waiting for 5 seconds between each press	Wait 5 seconds between each press of the jet of steam button
	The temperature regulator (H) has been set to "calc'n clean" position while the iron is still hot.	Change the temperature regulator setting.
Water comes out together with steam	Temperature regulator (H) very low	Turn the temperature control to a higher position and wait until the lamp (A) goes out.
	Steam regulator (A) set too high in conjunction with a low temperature.	Turn the steam regulator (A) to a lower position.
Iron emits noise	There is no water in the tank, the pump is operating dry	Fill the water tank
Garments tend to stick	Temperature too high	Turn the temperature control (H) down, and wait until the iron has cooled down.
The iron begins to smoke when switched on	During first use: Certain components on the appliance have been lightly greased at the factory and may produce a little smoke when initially heated.	This is completely normal and will stop after a short while.
Flashing lamp on top of handle (*)	Auto-shut off has been activated.	Move the iron gently from side to side to re-start it. The lamp will then flash once before it re-heats

(\*) Model dependent

You can download this manual from the local homepages of Bosch

## BOSCH

### Customer Service

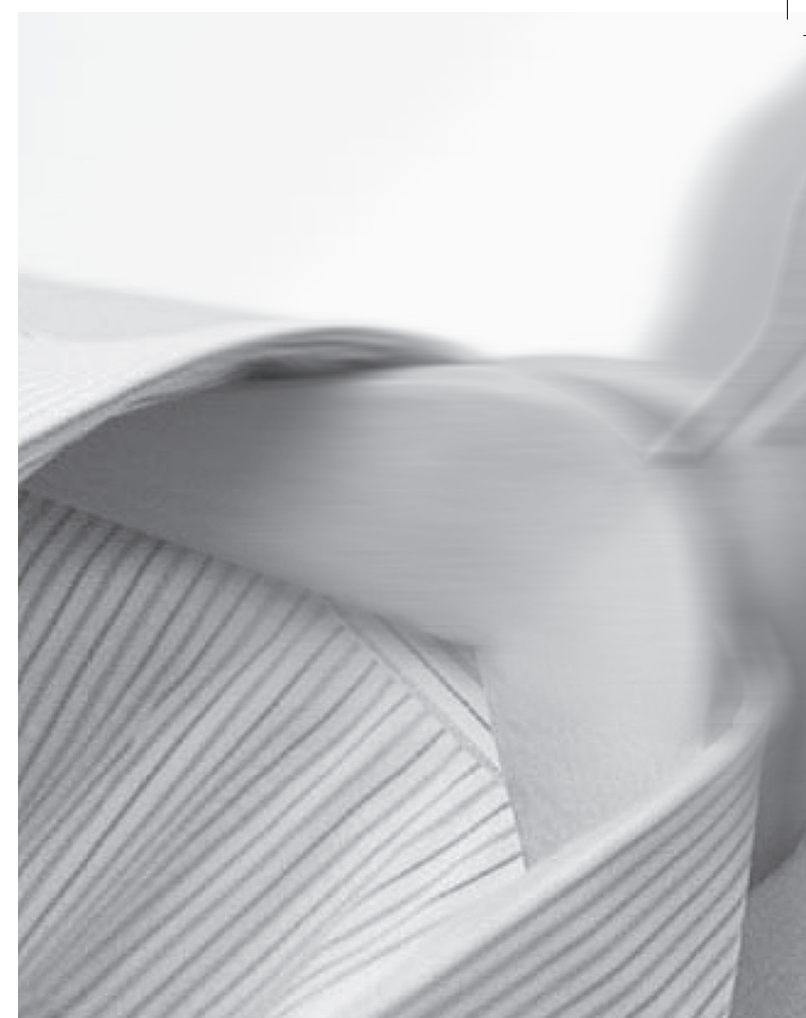
#### Great Britain

Bosch Customer Service  
Grand Union House  
Old Wolverton Road  
Milton Keynes  
MK12 5PT

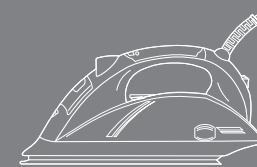
UK +44 (0)844 892 8923  
IRL +353 (0)1450 2655

www.bosch-home.co.uk

001 TDS11..GB/03/10



## TDS 11.. sensixx steam generator



Instructions for use



# BOSCH

Thank you for buying the TDS11 steam generator iron from Bosch. These instructions contain valuable information about the unique features of this iron and some hints to make ironing easier for you.

Please visit [www.bosch-home.co.uk](http://www.bosch-home.co.uk) for more product information or to register your product, just follow the link to the Online guarantee registration.

### Before using the iron for the first time

#### Please carry out the following steps:

1. Remove the protective cover from the soleplate before using the iron.
2. While the iron is unplugged, fill the water tank (J) with tap water.
3. Plug the appliance into the mains and set the temperature control (H) to the "max" position, by lining it up with the pointer (F) on the iron.
4. Wait until the iron has reached the correct temperature. The indicator light on the steam regulator (A) goes out. Then, set the steam regulator (A) to the "+" position.
5. Hold the iron horizontally and press the pump button (G). Any residue should come out of the soleplate (I). It may smoke and smell – this is normal and will cease after a short while.
6. When using the steam function for the first time, do so away from the garment, as there could still be some dirt in the steam dispenser.
7. If necessary, carefully clean the soleplate down with a dry, folded cloth

### Cleaning and Maintenance

#### ⚠ Attention ! Risk of burns !

For general cleaning, follow the information below:

Problem	Solution
Dirty/lightly marked iron body or soleplate	Clean the body of iron or soleplate with a damp cloth then dry it.
Mark develops on soleplate during use	Set the iron to its maximum temperature setting. Rub the iron a few times over with a dry cotton cloth folded several times.
Heavily stained soleplate	While the iron is cold, iron a linen cloth soaked in white vinegar. Then dampen a cloth with water and wipe the soleplate clean and dry thoroughly.

**DO NOT** de-scale or clean the water tank with cleaning products or solvents, (unless recommended by Bosch) as these could cause the iron to drip when using the steam function.

**DO NOT** use sharp objects or abrasive products to clean the soleplate or any other part of the appliance. To keep the soleplate in good condition, do not allow it to come into contact with metal objects.

### GUARANTEE TERMS

The terms of the guarantee for this appliance are in accordance with that stated by our representative for the country in which it is sold. Details of those conditions can be obtained from the retailer from whom the appliance was purchased. The SALES RECEIPT must be presented when making any claims against the terms of this guarantee. We reserve the right to make technical modifications.

### Environmental Care

This iron has been designed according to ecological criteria, related to the sustainable development, analysing its whole lifecycle - from material selection to its later reuse or recycling - evaluating the improvement possibilities, from a technical, economical and environmental point of view.

Before throwing a used appliance away, you should make it noticeably inoperable e.g. cut off the mains lead and be certain to dispose of it in accordance with current laws and regulations.

Your retailer, town council or local council can give you detailed information about these.



**This appliance is labelled in accordance with European Directive 2002/96/EG concerning used electrical and electronic appliances (waste electrical and electronic equipment - WEEE).**

**The guideline determines the framework for the return and recycling of used appliances as applicable throughout the EU.**

### Tips to help you save energy

Steam production consumes the most energy. To help minimise the energy used, follow the advice below:

- Start by ironing the fabrics that require the lowest ironing temperature.
- Regulate the steam according to the selected ironing temperature.
- Only use steam if necessary. If possible, use the spray function instead.
- Try to iron the fabrics while they are still damp and reduce the steam setting. Steam will be generated from the fabrics rather than the iron. If you tumble dry your fabrics before ironing them, set the tumble drier to the 'iron dry' programme.
- If the fabrics are damp enough, turn off the steam regulator completely.
- Stand the iron upright during pauses. Resting it horizontally with the steam regulator on generates wasted steam.

### Important

This appliance has been designed exclusively for domestic use and must not be used for industrial purposes.

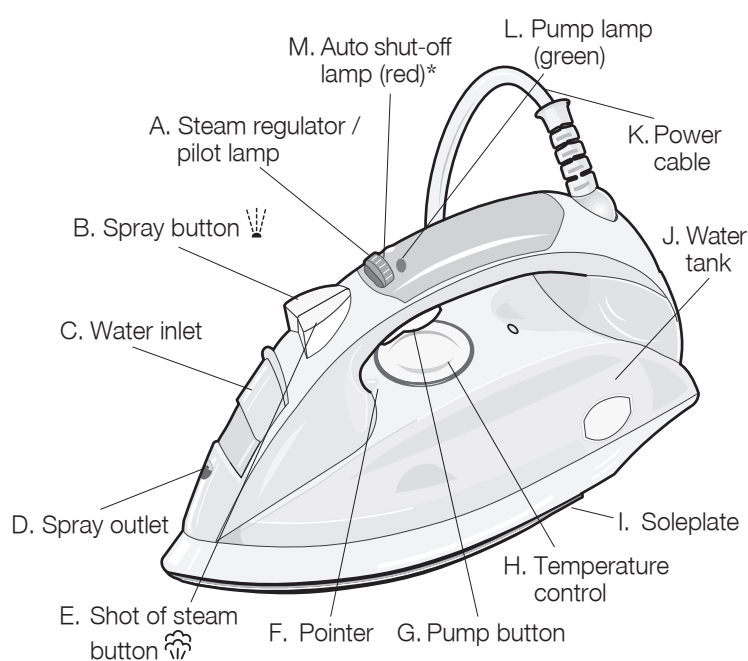
Carefully read through the operating instructions for the appliance and safeguard them for future reference.

### General safety warnings

- Danger of electric shocks or fire!
- This appliance is to be connected and used in accordance with the information stated on its characteristics plate.
- This appliance must be connected to an earthed socket. If it is absolutely necessary to use an extension cable, make sure that it is suitable for 16A and has a socket with an earth connection.
- The iron should not be used if it has been dropped, if there are visible signs of damage or if it is leaking water. It must be checked by an authorized Technical Service Centre before it can be used again.
- Do not allow the power cable to come into contact with the soleplate when it is hot.
- In order to avoid that, under unfavourable mains conditions, phenomena like transient voltage drops or lighting fluctuations can happen, it is recommended that the iron is connected to a power supply system with a maximum impedance of 0.27Ω. If necessary, the user can ask the public power supply company for the system impedance at the interface point.
- This appliance is not intended to be used by persons (including children) with reduced physical, sensory or mental capacities, or lack of experience and knowledge, unless they have been given supervision or instruction concerning the use of the appliance by a person responsible for their safety.
- Keep the appliance out of children's reach.
- Children should be supervised to ensure that they do not play with the appliance.
- Remove the plug from the socket before filling the appliance with water or before pouring out the remaining water after use.
- The appliance must never be placed directly under the tap to fill the water tank.
- The appliance must be used and placed on a stable surface.
- When placed on its stand, make sure that the surface on which the stand is placed is stable.
- The iron must not be left unattended while it is connected to the supply mains.
- Unplug the appliance from the mains supply after each use, or if a fault is suspected.
- The electrical plug must not be removed from the socket by pulling the cable.
- Never immerse the iron in water or any other fluid.
- Do not leave the appliance exposed to weather conditions (rain, sun, frost, etc.)
- With the aim of avoiding dangerous situations, any work or repair that the appliance may need, e.g. replacing a faulty mains cable, must only be carried out by qualified personnel from an Authorised Technical Service Centre.

## Using Your Iron

### 1. Your iron



(\*) Model dependent

### 2. Filling the water tank

**i** Set the steam regulator (A) to the «→» position and unplug the iron from the mains!

- Place the iron at an angle of 45°.
- Fill the tank but never above the “max” mark.

Use only clean water from the tap and do not mix anything with it. The addition of other liquids, such as perfume, will damage the appliance.

Do not use condensation water from tumble dryers, air conditioners or similar appliances. This appliance has been designed to use normal tap water.

To prolong the optimum steam function it is possible to mix tap water with distilled water 1:1. If the tap water in your district is very hard, mix tap water with distilled water 1:2.

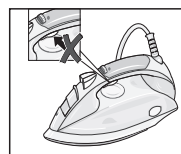
You can inquire about the water hardness with your local water supplier



### 7. Ironing without steam

This function enables the iron to be used for dry ironing.

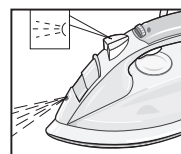
- Set the steam regulator (A) to the “-” position.
- Do not press the pump button (G)
- Select an appropriate temperature for the type of material being ironed.



### 8. Spray

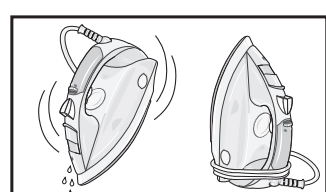
This can be used to remove stubborn wrinkles.

- Do not use the spray function with silk as staining may occur.
- Make sure that there is water in the tank (J).
- When ironing, press the spray button (B) and water will spray out of the spray outlet (D) onto the garment.



### 9. After finishing each ironing session

- Unplug the iron from the mains socket.
- Set the steam regulator (A) to the “-” position.
- Open the water inlet (C) cover.
- Hold the iron with the point facing down and shake it gently until all the water has come out.
- Set the iron aside in a vertical position to cool down.
- Coil the power cable (K) loosely around the heel of the iron, before storing.
- Store the iron in an upright position.



### 3. Setting the temperature

The temperature control (H) adjusts the temperature of the soleplate (I).

- Check the temperature instructions shown on the care label of the garment you are ironing and set the temperature control (H) to the corresponding position by lining it up with the pointer (F) on the iron:

Fabric	Temperature Setting	
Synthetics	•	
Silk - Wool	••	
Cotton - Linen	•••	

- If you are unsure what type of material the garment is made from, start ironing on the lowest temperature setting and increase accordingly. If the garment is made from mixed fabrics, set the temperature for the most delicate material.

- Sort your garments based on their care labels, always starting with clothes that have to be ironed at the lowest temperature.

- The pilot lamp on the steam regulator (A) will stay lit while the iron is heating up and go out once the selected temperature has been reached. Wait a few seconds after the lamp goes out before you start ironing.

Once the iron is ready, you can continue to iron even if the pilot lamp comes on again.

- If your iron has a red lamp on the top of the handle (M) and it is flashing, the auto shut-off has activated. Gently move the iron side to side to restart it.

### 4. Ironing with steam

The steam regulator (A) is used to adjust the amount of steam produced when ironing.

- Make sure that there is water in the tank (J).
- Adjust the temperature setting and then set the steam regulator according to the table below. Turning the control knob to the left produces minimum steam flow, maximum steam flow can be achieved by turning it to the right.

Temperature Setting	Steam Regulator Setting
••• to “max”	+
••	-

- Once a steam ironing setting has been chosen using the temperature control (H), the iron must be allowed to reach the selected temperature (the red indicator light “A” will go out), before the pump button (G) is pressed. Otherwise, water may drip from the iron as the temperature will not be high enough to produce any steam.

### 10. Multiple de-scaling system

This range of irons is equipped with the following de-scaling features “AntiCalc”.

#### A. self-clean

The self-clean valve between the water tank and the steam dispenser has been designed to prevent scale impairing the steam function and to ensure the optimum production of steam.

#### B. calc'n clean

The “calc'n clean” function helps to remove scale particles out of the steam chamber. Use this function approximately every 2 weeks, if the water in your area is very hard.

- Ensure that the iron is cooled down.
- Set the temperature selector (H) to the “calc'n clean” position (below “min”).
- Fill up with tap water to the “max” level.
- Plug in the iron and adjust the steam regulator (A) to the maximum position (“+”).
- Hold the iron over the sink or a container to collect the water.
- Press the pump button (G) till the water container is empty, while shaking gently. This could take several minutes.
- Repeat the procedure till no scale particles are coming out of the iron.
- Adjust the temperature control (H) to the “max” position. The iron will start steaming. Wait till all water inside the iron has been evaporated.
- Clean the base of the iron.

If the water in your region is very hard see the section on “Filling the water tank”.

#### C. “Calc'n clean” with descaling liquid.

For deep descaling, use the descaling fluid supplied. This should be carried out every 6 months. The descaling fluid can be obtained from After-sales or the Bosch eShop.

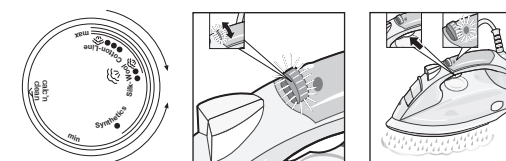
Accessory code (After-sales)	Name of accessory (Bosch eShop)
311144	TDZ1101

Follow the procedure described below:

- Ensure that the iron has cooled down and that the water tank is empty
- Set the temperature control (H) to the “calc'n clean” setting
- Fill the water tank with tap water mixed with a measure (25 ml) of the descaling fluid.
- Plug in the iron and select the maximum steam setting (“+”).

- The green pilot lamp (L) on the handle will stay lit while the pump button (G) is pressed. If you press it when the water tank is empty, you will hear a distinctive sound of the pump operating dry.

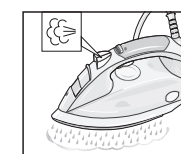
**Note:** At a temperature setting of “•”, the soleplate is not hot enough to produce steam so the steam regulator should be set to the “-” position to avoid water dripping from the soleplate (I).



### 5. Ironing with shot of steam

This can be used to remove stubborn wrinkles or to press in a sharp crease or pleat. It cannot be used on a synthetic setting for delicate items.

- Set the temperature control (H) to the “•••” or “max” position.
- Set the steam regulator (A) to the “+” position.
- Press the shot of steam (E) button on the handle repeatedly at intervals of 5 seconds.

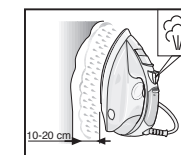


### 6. Vertical steaming with shot of steam

This can be used to remove creases from hanging clothes, curtains etc. It cannot be used on a synthetic setting for delicate items.

**WARNING!** Do not use vertical steam while the item is being worn. Never spray or aim steam at people or animals!

- Make sure that there is water in the tank (J).
- Set the temperature control (H) to the “•••” or “max” position and the steam regulator (A) to the “+” position.
- Hold the iron in an upright position 10-20 cm away from the garment being steamed.
- Press the pump button (G) continuously, and the shot of steam button (E) on the handle at intervals of 5 seconds. However, after 4 jets of steam, wait for 10 seconds to allow for continued steam production.



- Hold the iron over a sink or a container to collect the water.
- Press the pump button (G) until the water tank is empty. This could take several minutes.
- Then follow the procedure described above in section “B. calc'n clean” until particles no longer come out of the base of the iron.

#### D. anti-calc cartridge (model dependent)

The anti-calc cartridge has been designed to reduce the build-up of scale produced during steam ironing, helping to extend the useful life of your iron. Nevertheless, the “anti-calc” cartridge cannot remove all of the scale that is produced naturally over time.



### 11. Anti-drip system

The irons in this range are equipped with an anti-drip system. This will automatically stop the iron producing steam when the selected temperature setting is too low to prevent water from dripping out of the soleplate. You may hear a clicking sound when this system is in operation.

### Additional Features (Model Dependent)



#### Auto shut-off

Some irons in this range are equipped with an auto-shut off system.

The “secure” auto shut-off function switches off the iron automatically when it is not being used, thus helping to prevent accidents and saving energy. When the appliance is first plugged in, this function will be inactive for the first 2 minutes to allow it to reach the set temperature.

If during ironing, the iron is not moved for a certain length of time, the iron will automatically switch off. The length of time will depend on the position the iron has been left in:

- Horizontally (flat) or on its side: 30 seconds
- Vertically (upright): 8 minutes

The red lamp (M) on the top of the handle will flash when auto shut-off has been activated. To switch the iron back on, move it gently from side to side. The light will stop flashing.

