

Your washing machine

Congratulations - you have opted for a modern, high-quality domestic appliance manufactured by Bosch. This washing machine is distinguished by its economical water and energy consumption. Each machine that leaves our factory is inspected thoroughly to ensure that it functions properly and is in perfect condition.

For further information about products, accessories, spare parts and services visit our web site: www.bosch-home.com or contact our after-sales service centres.

Contents

Intended use	Page
Programmes	1
Setting and adjusting the programme	3
Washing	3/4
After washing	4
Individual settings	5/6
Overview of programmes	7
Safety instructions	8
Consumption values	8
Important information	9
Insert for liquid detergent	10
Care	10
Information on the display panel	10
Information about blockages	11
What to do if...	12/13
Emergency release	13
After-sales service	13

Environmental protection/Conservation tips

- Always fill the washing machine with a maximum amount of laundry for the relevant programme.
- Wash normally soiled laundry without a prewash.
- Instead of the **Cottons 90 °C** programme, select the **Cottons 60 °C** and the **EcoPerfect** option. Comparable cleaning result with significantly lower energy consumption.
- Measure the detergent according to the manufacturer's instructions and water hardness.
- If the laundry is then dried in the tumble dryer, select the appropriate spin speed according to the instructions of the dryer manufacturer.

Automatic stain removal
Automatic treatment of 16 different types of stain possible. No pretreatment of stains required - the washing machine automatically adapts the washing process → page 6.

Intended use

- For domestic use only
- For machine-washable fabrics and hand-washable wool in detergent solution
- To be operated with cold drinking water and commercially available detergents and care products which are suitable for use in washing machines

- Do not leave children unattended near the washing machine.
- The washing machine is not to be used by children or persons not familiar with the operating instructions.
- Keep pets away from the washing machine.

Preparation Before washing for the first time

Check the machine
- Never use a damaged machine.
- Inform the after-sales service.

Connecting the mains plug
Make sure your hands are dry. Take hold of the plug only.

Turn the tap on

Preparation Before washing for the first time

Sorting the laundry
Follow the manufacturer's care information. According to the information on the care labels. According to type, colour, soiling and temperature. Do not exceed the maximum load → page 7. Observe the important information → page 9.

Detergents and care products
Measure accordingly: Amount of laundry, soiling, water hardness (ask your water supply company) and manufacturer's instructions. Models without insert for liquid detergent: Pour liquid detergent into the appropriate dispenser and place in the drum. During operation: open the detergent drawer carefully.

Turn the tap on
Dilute thick fabric softener and care products with water. This prevents blockages.

Washing

Switching off
Turn the programme selector to **off**.

Turning the tap off
Not required for Aqua-Stop models → *Installation instructions, page 7.*

Removing washing
Open the washing machine door and remove the washing. If **Rinse stop** (no final spin) is active: turn the programme selector to **Empty** or **Spin**. Select the spin speed if necessary. Press **Start/Reload**.

Programme has ended when...
... finished, **Remove washing** appears on the display panel.

Interrupting the programme
Programmes at high temperatures:
- Cool washing: select **Rinse**.
- Press **Start/Reload**.
Programmes at low temperatures:
- Select **Spin** or **Empty**.
- Press **Start/Reload**.

Changing the programme, if ...
... you have selected the wrong programme by mistake:
- Reselect the programme.
- Press **Start/Reload**. The new programme starts from the beginning.

Reloading laundry, if ... → page 6
... **Start/Reload** is selected and **Top-up possible** appears in the display panel.

Additional settings
- Do not leave the washing machine door open for too long as water from the washing could leak out.
- Load indicator not active **when reloading**. Press **Start/Reload**.

Individual settings

Options see also the *Overview of programmes*

VarioPerfect*
SpeedPerfect - Standard - EcoPerfect

SpeedPerfect: For washing in a shorter time with a washing outcome comparable to that of the standard programme. Maximum load → *Overview of programmes, page 7.*

EcoPerfect: For saving energy with a washing performance comparable to that of the standard programme.

End time*
When you select the programme, the respective time to the end of the programme is displayed. It can be adjusted to a maximum of 24 hours in 1-hour increments. Press the **-/+ change** buttons repeatedly until the desired number of hours is displayed (h=hour). It is not possible to make adjustments once the programme has started.

Prewash OFF - ON
For heavily soiled items. Prewash at max. 30 °C

Easy-iron OFF - ON
Special spin sequence with subsequent fluffing. Gentle final spin at reduced speed. Residual moisture in the laundry is increased slightly.

Signal*
Select the volume of the information signals.
OFF - quiet - medium - loud - very loud

Button signal*
Select the volume of the button signals.
OFF - quiet - medium - loud - very loud

Language*
Select the language of the display texts.

Water Plus OFF - ON
Increased water level. Gentler treatment of the laundry.

Rinse stop OFF - ON
After the final rinse, the laundry remains in the water.

Extra Rinse* max. +3 Rinse cycles
Extra rinsing. Prolonged programme duration. Recommended use: for particularly sensitive skin and/or in areas with very soft water.

Stain selection*
Automatic treatment of stubborn stains → page 6.

Display symbols
Childproof lock/appliance lock OFF - ON
You can lock the washing machine to prevent the functions you have set from being changed inadvertently. To **activate/deactivate**: press and hold the **menu** button for 5 seconds. Note: the childproof lock remains activated until you start the next programme, even after the machine has been switched off. Deactivate the childproof lock again when you have switched on the machine.

Foam detection
Too much foam in the washing machine. Foam detection system active - special programme sequence to reduce foam.

Individual settings

To select menu options
Information on programme sequence; with progress or load bar, as appropriate

To change settings
available depending on the selected

If the buttons are held for longer, the appliance automatically scrolls through the subsequent setting options

Stain selection

The correct treatment for every stain
Do not let stains dry. Remove any solid residue beforehand. Sort items of laundry as usual and load the washing machine. Select a type of stain (cannot be combined).

A total of 16 different stains can be selected. The washing machine adjusts the washing temperature, drum movement and soaking time to suit the type of stain. Hot or cold water, gentle or intensive washing control (thanks to the new drum structure) and a long or short soaking time ensure that the wash programme has a special sequence for each type of stain.

A stain type can be added to each programme via the menu buttons/change buttons.

The result: optimum stain treatment without the use of additional special detergents.

Stains

Baby food	Cosmetics	Tea
Blood	Red wine stain	Tomato
Egg	Chocolate	Stawberry
Soil and sand	Sweat	Orange
Grass	Bottom sock dirt	
Coffee	Butter and edible oil	

Stain treatment in detail - 2 examples

Egg
Soaked in lukewarm water, selected wash cycle with a higher water level and additional rinse cycles to remove particles

Blood
Blood is first "loosened" in cold water, then the selected wash programme starts.

For the other types of stain, we have formulated comparable solutions in our intensive studies.

Reload

If you want to add additional items of laundry after the programme has started, choose **Start/Reload**. The machine checks whether reloading is possible. Follow the instructions in the display panel.

For safety reasons, the washing machine door remains locked when the water level and/or temperature is high, or while the drum is rotating. To continue the programme, press the **Start/Reload** button.

Individual settings

SpeedPerfect*, EcoPerfect, Prewash, Easy-Iron, Water Plus, Rinse Plus, Stains, Rinse stop

SpeedPerfect*, EcoPerfect, Prewash, Easy-Iron, Water Plus, Rinse Plus, Stains, Rinse stop for particularly sensitive skin, longer wash cycle at selected temperature, higher water level, additional rinse cycle

SpeedPerfect, EcoPerfect, Prewash, Easy-Iron, Water Plus, Rinse Plus, Stains, Rinse stop

SpeedPerfect, EcoPerfect, Prewash, Easy-Iron, Water Plus, Rinse Plus, Stains, Rinse stop, different types of laundry can be washed together

SpeedPerfect, EcoPerfect, Easy-Iron, Water Plus, Rinse Plus, Stains, Rinse stop, reduced rinse + spin and final spin

SpeedPerfect, EcoPerfect, Prewash, Easy-Iron, Water Plus, Rinse Plus, Stains, Rinse stop, reduced rinse + spin and final spin

SpeedPerfect, EcoPerfect, Prewash, Easy-Iron, Water Plus, Rinse Plus, Stains, Rinse stop, gentle spin only, hang up dripping wet

SpeedPerfect, EcoPerfect, Water Plus, Stains, Rinse stop, large parts individually wash detergent sparingly dosed

SpeedPerfect, EcoPerfect, Prewash, Easy-Iron, Water Plus, Rinse Plus, Stains, Rinse stop, gentle spin between two rinse cycles only

Rinse stop, particularly gentle wash programme to prevent shrinkage of laundry, longer breaks during the programme (fabrics test in the detergent solution)

Rinse stop, short programme, approx. 15 minutes, suitable for lightly soiled washing

SpeedPerfect, EcoPerfect, Water Plus, Rinse Plus, Stains, Rinse stop, fabrics made from microfibre

Rinse, Spin, Empty

Overview of programmes

Programmes	°C	max.	Type of laundry	Options; notes
Cottons	90 °C	8 kg / 5 kg*	Hard-wearing fabrics, heat-resistant fabrics made of cotton or linen	SpeedPerfect*, EcoPerfect, Prewash, Easy-Iron, Water Plus, Rinse Plus, Stains, Rinse stop
Sensitive	60 °C		Hard-wearing fabrics made of cotton or linen	SpeedPerfect*, EcoPerfect, Prewash, Easy-Iron, Water Plus, Rinse Plus, Stains, Rinse stop; for particularly sensitive skin, longer wash cycle at selected temperature, higher water level, additional rinse cycle
Easy-care	60 °C		Easy-care fabrics made of cotton, linen, synthetic fibres or blended fabrics	SpeedPerfect, EcoPerfect, Prewash, Easy-Iron, Water Plus, Rinse Plus, Stains, Rinse stop
Mix	40 °C		Fabrics made of cotton and easy-care fabrics	SpeedPerfect, EcoPerfect, Prewash, Easy-Iron, Water Plus, Rinse Plus, Stains, Rinse stop; different types of laundry can be washed together
Dark Wash	40 °C		Dark-coloured fabrics made of cotton and dark easy-care fabrics	SpeedPerfect, EcoPerfect, Easy-Iron, Water Plus, Rinse Plus, Stains, Rinse stop; reduced rinse + spin and final spin
Curtains	30 °C		Curtains weighing 3.5 kg, or light curtains measuring 25 x 30 m²	SpeedPerfect, EcoPerfect, Prewash, Easy-Iron, Water Plus, Rinse Plus, Stains, Rinse stop; reduced rinse + spin and final spin
Shirts/Blouses	60 °C		Non-iron shirts made of cotton, linen, synthetic fibres or blended fabrics	SpeedPerfect, EcoPerfect, Prewash, Easy-Iron, Water Plus, Rinse Plus, Stains, Rinse stop; gentle spin only, hang up dripping wet
Down	60 °C		Machine-washable fabrics filled with down	SpeedPerfect, EcoPerfect, Water Plus, Stains, Rinse stop; large parts individually wash detergent sparingly dosed
Delicates/Silk	40 °C		For delicate, washable fabrics, e.g. made of silk, satin, synthetic fibres or finer delicate fabrics (e.g. curtains)	SpeedPerfect, EcoPerfect, Prewash, Easy-Iron, Water Plus, Rinse Plus, Stains, Rinse stop; gentle spin between two rinse cycles only
Wool	40 °C		Hand or machine-washable fabrics made of wool or containing wool	Rinse stop; particularly gentle wash programme to prevent shrinkage of laundry, longer breaks during the programme (fabrics test in the detergent solution)
SuperQuick 15'	40 °C		Easy-care fabrics made of cotton, linen, synthetic fibres or blended fabrics	Rinse stop; short programme, approx. 15 minutes, suitable for lightly soiled washing
Sport, Fitness	40 °C		Fabrics made from microfibre	SpeedPerfect, EcoPerfect, Water Plus, Rinse Plus, Stains, Rinse stop
Additional programmes				Rinse, Spin, Empty

* reduced load for **SpeedPerfect** option
1. **Mix 40 °C** with maximum spin speed is ideal as a short programme. Programmes without prewash - add detergent to compartment II, programmes with prewash - distribute the detergent between compartments I and II.

Safety instructions

– Read the instruction manual and installation instructions and all other information enclosed with the washing machine and act accordingly.
– Retain the documents for subsequent use.

Risk of electric shock – Never pull the cable to disconnect the mains plug.
– Only insert/pull out the mains plug with dry hands.

Danger to life For worn-out appliances:
– Disconnect the mains plug.
– Sever the mains cable and discard along with the plug.
– Destroy the lock on the washing machine door. This will prevent children from locking themselves in and risking their lives.

Danger of suffocation – Keep packaging, film and packaging parts out of the reach of children.

Risk of poisoning – Keep detergents and care products out of the reach of children.

Risk of explosion – Items of laundry pretreated with cleaning agents containing solvents, e.g. stain remover/cleaning solvent may cause an explosion after being loaded into the washing machine. Rinse items of laundry thoroughly by hand beforehand.

Risk of injury – The washing machine door can become very hot.
– Be careful when draining hot detergent solution.
– Do not climb onto the washing machine.
– Do not lean on the open washing machine door.
– Do not reach into the drum if it is still rotating.

Consumption values

Programme	Option	Load	Electricity consumption***	Water***	Programme duration***
👕👖 Cottons 30 °C**		8 kg	0,33 kWh	57 l	2:06 h
👕👖 Cottons 40 °C**		8 kg	0,95 kWh	57 l	2:16h
👕👖 Cottons 60 °C**		8 kg	1,45 kWh	57 l	2:26 h
👕👖 Cottons 60 °C	🌿 EcoPerfect *	8 kg	1,06 kWh	56 l	3:25 h
👕👖 Cottons 90 °C		8 kg	2,32 kWh	68 l	2:16 h
👕👖👗 Mix 40 °C**		3,5 kg	0,46 kWh	37 l	0:53 h
👕👖 Easy-Care 40 °C**		3,5 kg	0,54 kWh	41 l	1:35 h
👗👚 Delicate/Silk -- (cold)		2 kg	0,04 kWh	35 l	0:41 h
👗👚 Delicate/Silk 30 °C		2 kg	0,14 kWh	35 l	0:41 h
👕👖 Wool 🌀 -- (cold)		2 kg	0,06 kWh	40 l	0:40 h
👕👖 Wool 🌀 30 °C		2 kg	0,16 kWh	40 l	0:40 h

* Programme setting for testing and energy labelling in accordance with EU directive 92/75/EEC.
** Programme setting for testing in accordance with valid standard EN60456.
Note on comparative tests: For testing the test programmes, wash the specified load using the maximum spin speed.
As a **short programme** for coloureds, select the programme 👕👖👗 **Mix 40 °C** with the maximum spin speed.
***The values deviate from the indicated values depending on water pressure, hardness, and inlet temperature, ambient temperature, type, amount and soiling of the laundry, detergent used, fluctuations in the power supply and selected additional functions.

Important information

Before washing for the first time
Do not load any laundry into the machine. Turn on the tap. Add the following to compartment II:
– approx. **1 litre** water
– detergent (dosage according to the manufacturer's instructions for light soiling and the appropriate degree of water hardness)
Set the programme selector to **Easy-care 60 °C** and select **Start/Reload**. At the end of the programme, turn the programme selector to **Off**.

Protecting the laundry and the machine
– Empty pockets.
– Look out for metal items (paperclips, etc.).
– Wash delicates in a laundry bag (tights, curtains, underwired bras).
– Fasten zips, do up any buttons.
– Brush sand out of pockets and collars.
– Remove curtain fittings or place in the laundry bag.

Loading the laundry
Insert large and small items of laundry. Take care not to trap items of laundry between the washing machine door and the rubber seal.

Laundry with varying degrees of soiling
light Wash new items of clothing separately.
Do not prewash. If required, select the additional 🔄 **SpeedPerfect** function.
Pre-treat any stains as necessary.
heavy Do not load as much laundry. Select the program with Prewash.

Soaking Load laundry of the same colour.
Pour soaking agent/detergent into compartment II in accordance with the manufacturer's instructions. Turn the programme selector to 🌿 **Cottons 30 °C** and press 🔄 **Start/Reload**. After approx. 10 minutes, press 🔄 **Start/Reload** to pause the programme. Once the required soaking time has elapsed, press 🔄 **Start/Reload** again to continue the programme, or select a different programme.

Starching Laundry must not be treated with fabric softener
Starching is possible in all wash programmes if liquid starch is used. Pour starch into the ☞ fabric softener compartment in accordance with the manufacturer's instructions (rinse first if necessary).

Dyeing/bleaching
Dye should only be used in normal household quantities. Salt may damage stainless steel. Always follow the dye manufacturer's instructions. Do **not** use the washing machine for bleaching clothes.

Load indicator
The load sensor detects how heavily the washing machine is loaded. The laundry is not weighed.

Recommended dosage
Based on the selected programme and the detected load, the recommended dosage function provides a recommendation for the detergent dosage in %. The % figure refers to the recommendation of the detergent manufacturer.

Automatic load sensing
Independently of the load indicator, the automatic load sensing function uses additional sensors to adapt the water and power consumption ideally to each programme, depending on the type of fabric and the load.

Insert for liquid detergent

Position the insert for dispensing liquid detergent:
– Remove the detergent drawer completely → **page 10**.
– Slide the insert forwards.
Do not use the insert (slide upwards):
– for gel detergents and washing powder,
– for programmes with 🔄 **Prewash** or the **end time** option.

Care **Risk of electric shock. Disconnect the mains plug. Risk of explosion. No solvents.**
– Machine housing, control panel
– Wipe with a soft, damp cloth.
– Do not use any abrasive cloths, scourers or cleaning agents (stainless steel cleaners).
– Remove detergent and cleaning agent residue immediately.
– Do not clean with a jet of water.

Cleaning the detergent drawer ...
... if it contains detergent or fabric softener residues.
1. Pull out, press insert down, remove drawer completely.
2. To remove the insert: press the insert upwards from below with your finger.
3. Clean the detergent dispenser tray and insert with water and a brush and dry it.
4. Attach the insert and engage (connect the cylinder to the guide pin).
5. Push in the detergent drawer.

Drum
Leave the washing machine door open so that the drum can dry out. Rust stains - use chlorine-free cleaning agent, not steel wool.

Descaling No laundry in the machine.
This is not necessary if the detergent is dosed correctly. However, if it is necessary, follow the instructions of the descaler manufacturer. Suitable descaling products can be purchased from our website or after-sales service (→ **page 13**).

Information on the display panel

Door open?	Close the washing machine door properly; laundry may be caught.
Tap closed?	Open the tap completely, supply hose kinked or trapped; Clean the filter → page 11 , Water pressure too low.
Pump blocked?	Detergent solution pump blocked; Clean the detergent solution pump → page 11 . Drainage hose/waste pipe blocked; Clean the drainage hose at the siphon → page 11 .
Top-up not possible; water level too high or Temperature too high	Not possible to add more laundry. To continue, press the Start/Reload button.
F: 23	Water in the base tub, appliance leaking. Call the after-sales service.
F: 34	Washing machine door cannot be locked. Open the washing machine door and close it with an audible "click"; switch the appliance off and on again; set the programme and make your settings; start the programme.
Other displays	Switch off the appliance, wait for 5 seconds and switch it back on. If the display appears again, call the after-sales service → page 13 .

Information about blockages

Detergent solution pump
Turn the programme selector to **Off** and disconnect the mains plug.

- Open and remove the service flap.
- Take the drainage hose out of the retainer. Remove the sealing cap, allow the detergent solution to flow out. Push the sealing cap back on.
- Carefully unscrew the pump cover (residual water).
- Clean the interior, pump cover thread and pump housing (the impeller in the detergent solution pump must rotate).
- Replace the pump cover and screw it on tightly. The handle is vertical. Place the drainage hose back into the retainer.
- Place the service flap back on and close.

To prevent unused detergent from flowing straight into the drain during the next wash: Pour 1 litre of water into compartment II and start the 🔄 **Empty** programme.

Drainage hose at the siphon
Turn the programme selector to **Off** and disconnect the mains plug.

- Loosen the hose clamp, carefully remove the drainage hose (residual water).
- Clean the drainage hose and siphon connecting piece.
- Reattach the drainage hose and secure the connection with the hose clamp.

Filter in the water supply
Risk of electric shock
Do not immerse the Aqua-Stop safety device in water (it contains an electrical valve).
Reduce the water pressure in the supply hose:

- Turn off the tap.
- Select any programme (except 🌀 **Spin**/🔄 **Empty**).
- Choose** 🔄 **Start/Reload**. Let the programme run for approximately 40 seconds.
- Turn the programme selector to **Off**. Disconnect the mains plug. Clean the filter:
- Disconnect the hose from the tap. Clean the filter with a small brush.
- Connect the hose and check for leaks.

and/or for Standard and Aqua-Secure models:
Remove the hose from the rear of the appliance. Remove the filter with pliers and clean.

What to do if ...

- Water is leaking out. – Attach/replace the drainage hose correctly.
– Tighten the screw connection of the supply hose.
- No water supply. – 🔄 **Start/Reload** not selected?
Detergent not dispensed. – Tap not turned on?
– Filter blocked? Clean the filter → **page 11**.
– Supply hose kinked or trapped?
- Washing machine door cannot be opened. – Safety function active. Programme termination? → **page 4**.
– 🔄 **Rinse stop** (no final spin) selected? → **page 3, 4**.
– Can be opened by emergency release only? → **page 13**.
- Programme does not start. – 🔄 **Start/Reload** or **end time** selected?
– Washing machine door closed?
– Childproof lock active? Deactivate → **page 5**.
- Detergent solution is not drained. – 🔄 **Rinse stop** (no final spin) selected? → **page 3, 4**.
– Clean the detergent solution pump → **page 11**.
– Clean the waste pipe and/or drainage hose.
- Water not visible in the drum. – Not a fault - water below the visible area.
- Spin result not satisfactory. Laundry wet/too damp. – Not a fault - the unbalanced load detection system has cancelled the spin cycle due to uneven distribution of the laundry. Distribute large and small items of laundry evenly in the drum.
– 🔄 **Easy-Iron** selected? → **page 5**.
– Speed selected too low? → **page 5**.
- Spin cycle performed several times. – Not a fault - unbalanced load detection system is adjusting the imbalance.
- Residual water in the ☞ compartment for care products. – Not a fault - the action of the care product is not affected.
– Clean the insert if necessary → **page 10**.
- Odour formation in the washing machine. – Run programme 👕👖 **Cottons 90 °C** without laundry. Use standard detergent.
- The 🌀 status indicator lights up. Appliance has detected a detergent overload. – Too much detergent used?
Mix 1 tablespoon of fabric softener with ½ litre of water and pour into compartment II (not with outdoor or down fabrics).
– Reduce the detergent dosage for the next wash cycle.
- Loud noise generated, vibrations and "wandering" during the spin cycle. – Are the appliance feet fixed?
Secure the appliance feet → **Installation instructions**.
– Transportation safety devices removed?
Remove the transportation safety devices → **Installation instructions**.
- Display panel/indicator lamps do not function during operation. – Power cut?
– Circuit breakers tripped or fuses blown? Reset the circuit breakers or change the fuses.
– If the fault occurs repeatedly, call the after-sales service.
- Programme sequence longer than usual. – Not a fault - unbalanced load detection system adjusts imbalance by repeatedly distributing the laundry.
– Not a fault - foam detection system active - several rinse cycles are added.

What to do if ...

- Detergent residues on the laundry. – Occasionally, phosphate-free detergents contain water-insoluble residues.
– **Select** 🔄 **Rinse** or brush the laundry after washing.
 - In Reload mode, 🔄 **Start/Reload** flashes very quickly and a signal sounds. – Water level too high. Not possible to add laundry. Close the washing machine door immediately if necessary.
– To continue, press the 🔄 **Start/Reload** button.
- If you cannot correct a fault yourself (switching on/off) or a repair is required:
– Turn the programme selector to **Off** and remove the mains plug from the socket.
– Turn off the water supply and call the after-sales service → **S. 13**.

Emergency release

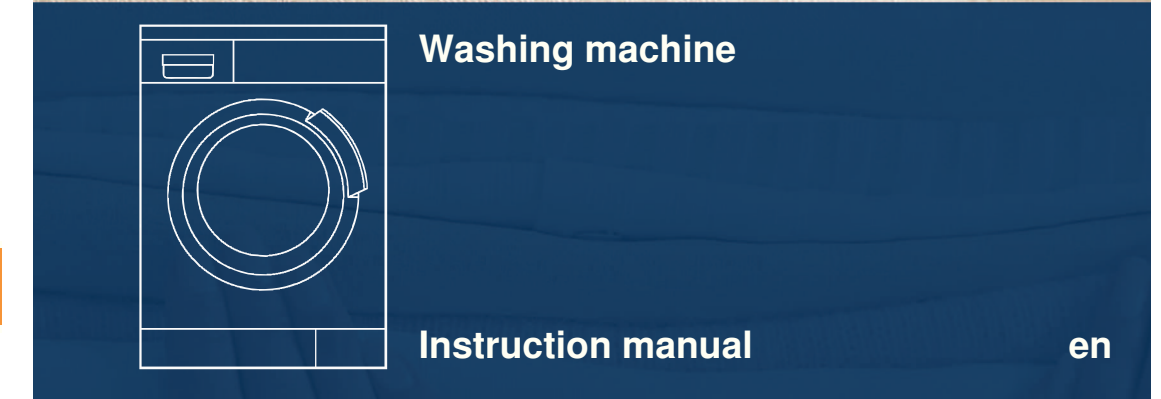
The programme continues when the power supply is restored. However, if the laundry has to be removed, the washing machine door can be opened as follows:

Risk of scalding.
The detergent solution and laundry may be hot. If possible, leave it to cool down.
Do not reach into the drum if it is still rotating.
Do not open the washing machine door if water can be seen through the glass.

- Turn the programme selector to **Off** and disconnect the mains plug.
- Drain the detergent solution → **page 11**.
- Pull the emergency release downwards with a tool and release. Washing machine door can then be opened.

After-sales service

- If you cannot rectify the fault yourself (Troubleshooting → **page 12, 13**), please contact our after-sales service. We will always find a suitable solution and will avoid a visit from a service technician wherever possible.
 - You can find the contact details for your nearest after-sales service here or in the after-sales service directory (depending on model).
You find the regional service contact of all countries in the enclosed service booklet.
 - Please give the after-sales service the product number (E no.) and the production number (FD) of the appliance.
- E-Nr.** _____ **FD** _____
Product number Production number
This information can be found: on the inside of the washing machine door/ opened service flap* and rear of the appliance. *depending on the model*
- Rely on the professionalism of the manufacturer.** Please contact us. This will ensure that the repair is carried out by trained service technicians who arrive equipped with genuine spare parts for your appliance.



Observe the safety instructions on page 8.

Read these instructions and the separate installation instructions before operating the washing machine.

Your washing machine

Congratulations - you have opted for a modern, high-quality domestic appliance manufactured by Bosch. This washing machine is distinguished by its economical water and energy consumption. Each machine that leaves our factory is inspected thoroughly to ensure that it functions properly and is in perfect condition.

For further information about products, accessories, spare parts and services visit our web site: www.bosch-home.com or contact our after-sales service centres.

Contents

	Page
Intended use	1
Programmes	1
Setting and adjusting the programme	3
Washing	3/4
After washing	4
Individual settings	5/6
Overview of programmes	7
Safety instructions	8
Consumption values	8
Important information	9
Insert for liquid detergent.....	10
Care	10
Information on the display panel	10
Information about blockages	11
What to do if.....	12/13
Emergency release	13
After-sales service	13



Environmental protection/Conservation tips

- Always fill the washing machine with a maximum amount of laundry for the relevant programme.
- Wash normally soiled laundry without a prewash.
- Instead of the **Cottons 90 °C** programme, select the **Cottons 60 °C** and the **EcoPerfect** option. Comparable cleaning result with significantly lower energy consumption.
- Measure the detergent according to the manufacturer's instructions and water hardness.
- If the laundry is then dried in the tumble dryer, select the appropriate spin speed according to the instructions of the dryer manufacturer.

Automatic stain removal

Automatic treatment of 16 different types of stain possible. No pretreatment of stains required - the washing machine automatically adapts the washing process → page 6.

Intended use

- For domestic use only
- For machine-washable fabrics and hand-washable wool in detergent solution
- To be operated with cold drinking water and commercially available detergents and care products which are suitable for use in washing machines



- Do not leave children unattended near the washing machine.
- The washing machine is not to be used by children or persons not familiar with the operating instructions.
- Keep pets away from the washing machine.

Programmes

Detailed overview of programmes → page 7. Temperature and spin speed can be selected individually, depending on the selected programme and programme progress.

Cottons	Hard-wearing fabrics
Easy-care	Easy-care fabrics
Mix	Different types of laundry
Delicate/Silk	Delicate washable fabrics
Wool	Hand/machine-washable wool
Rinse	Extra rinse with spin
Spin	Extra spin with selectable spin speed
Empty	Empty the rinsing water with Rinse stop (no final spin)
SuperQuick 15'	Extra short programme
Sensitive	Hard-wearing fabrics; longer washing and additional rinsing for particularly sensitive skin
Sports, Fitness	Fabrics made from microfibre
Shirt/Blouse	Non-iron shirts
Curtains	Curtains programme
Down	washable fabrics filled with down
Dark Wash	Dark-coloured fabrics

Preparation

Before washing for the first time
Wash once without any laundry → page 10



Correct installation according to the separate Installation instructions.



Check the machine

- Never use a damaged machine.
- Inform the after-sales service.



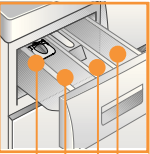
Connecting the mains plug



Make sure your hands are dry. Take hold of the plug only.



Turn the tap on



Insert for liquid detergent (depending on model), → page 10

Compartment II: detergent for main wash, softener, bleach, stain remover

Compartment ⌘: fabric softener, starch

Compartment I: Detergent for prewash

**Display panel/
menu buttons/change buttons**

8 kg / 1600 rpm

--, 20° - 90° °C ↓ ↑
Set the temperature (– = cold)

0, 400 - 1600* ⌘ ↓ ↑
Set the spin speed
(* model-dependent) (0=no spin during the programme sequence)

i All buttons are sensitive and need only to be touched lightly.

Programme

i Programme switching the and off and the program turned in eit

page 9. **Load indicator/recommended dosage** To activate, first open the door, set the programme and then load the items of laundry.

Sorting the laundry

Follow the manufacturer's care information. According to the information on the care labels. Do not exceed the maximum load → page 7. Observe the important information → page 9.



Detergents and care products

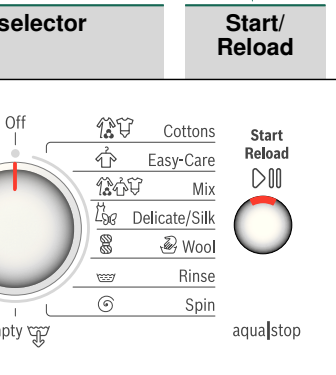
Measure accordingly: Amount of laundry, soiling, water hardness (ask your water supply company) and manufacturer's instructions. Models without insert for liquid detergent: Pour liquid detergent into the appropriate dispenser and place in the drum. During operation: open the detergent drawer carefully.



i Dilute thick fabric softener and care products with water. This prevents blockages.

Open the door/set the programme

i **If the childlock is active → deactivate it, page 5. Follow the instructions in the display panel.



selector for the machine on for selecting time. Can be turned in either direction.

Loading the laundry

i Observe the load indicator in the display → page 9

Adding detergent and care products

i Observe the dosage recommendation for detergent in the display → page 9



Close the washing machine door

Make individual settings → page 5.
Stain selection → page 6.
Select the temperature/spin speed → page 2.

Washing



1

2

3

4

5

6

Washing

Select Start/Reload

3

Switching off

Turn the programme selector to **off**.



Turning the tap off

Not required for Aqua-Stop models → *Installation instructions*, page 7.

Removing washing

Open the washing machine door and remove the washing. If **Rinse stop** (no final spin) is active: turn the programme selector to **Empty** or **Spin**. Select the spin speed if necessary. Press **Start/Reload**.

i

- Remove any foreign objects - risk of rusting.
- Leave the washing machine door and detergent drawer open so that any residual water can evaporate.

Programme has ended when...

... **finished**, **Remove washing** appears on the display panel.

Interrupting the programme

Programmes at high temperatures:

- Cool washing: select **Rinse**.
- Press **Start/Reload**.

Programmes at low temperatures:

- Select **Spin** or **Empty**.
- Press **Start/Reload**.

Changing the programme, if ...

... you have selected the wrong programme by mistake:

- Reselect the programme.
- Press **Start/Reload**). The new programme starts from the beginning.

Reloading laundry, if ... → page 6

... **Start/Reload** is selected and **Top-up possible** appears in the display panel.

i

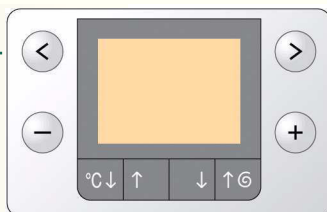
- Do not leave the washing machine door open for too long as water from the washing could leak out.
- Load indicator not active **when reloading**. Press **Start/Reload**.

4

Individual settings

</> To select menu options

Information on programme sequence; with progress or load bar, as appropriate



-/+ To change settings

available depending on the selected

* If the buttons are held for longer, the appliance automatically scrolls through the subsequent setting options

Options see also the Overview of programmes

VarioPerfect*

SpeedPerfect - Standard - EcoPerfect

SpeedPerfect: For washing in a shorter time with a washing outcome comparable to that of the standard programme. Maximum load → Overview of programmes, page 7.

EcoPerfect: For saving energy with a washing performance comparable to that of the standard programme.

End time*

When you select the programme, the respective time to the end of the programme is displayed. It can be adjusted to a maximum of 24 hours in 1-hour increments. Press the **-/+ change** buttons repeatedly until the desired number of hours is displayed (h=hour). It is not possible to make adjustments once the programme has started.

Prewash
OFF - ON

For heavily soiled items. Prewash at max. 30 °C

Easy-iron
OFF - ON

Special spin sequence with subsequent fluffing. Gentle final spin at reduced speed. Residual moisture in the laundry is increased slightly.

Signal*

Select the volume of the information signals.
OFF - quiet - medium - loud - very loud

Button signal*

Select the volume of the button signals.
OFF - quiet - medium - loud - very loud

Language*

Select the language of the display texts.

Water Plus
OFF - ON

Increased water level. Gentler treatment of the laundry.

Rinse stop
OFF - ON

After the final rinse, the laundry remains in the water.

Extra Rinse*
max. +3 Rinse cycles

Extra rinsing. Prolonged programme duration. Recommended use: for particularly sensitive skin and/or in areas with very soft water.

Stain selection*

Automatic treatment of stubborn stains → page 6.

Display symbols

Childproof lock/appliance lock
OFF - ON

You can lock the washing machine to prevent the functions you have set from being changed inadvertently.
To activate/deactivate: press and hold the **< menu** button for 5 seconds.

Note: the childproof lock remains activated until you start the next programme, even after the machine has been switched off.

Deactivate the childproof lock again when you have switched on the machine.

Foam detection

Too much foam in the washing machine. Foam detection system active - special programme sequence to reduce foam.

Individual settings

Stain selection



The correct treatment for every stain

Do not let stains dry. Remove any solid residue beforehand. Sort items of laundry as usual and load the washing machine. Select a type of stain (cannot be combined).

A total of 16 different stains can be selected. The washing machine adjusts the washing temperature, drum movement and soaking time to suit the type of stain. Hot or cold water, gentle or intensive washing control (thanks to the new drum structure) and a long or short soaking time ensure that the wash programme has a special sequence for each type of stain.

A stain type can be added to each programme via the menu buttons/change buttons.

The result: optimum stain treatment without the use of additional special detergents.

Stains

Baby food
Blood
Egg
Soil and sand
Grass
Coffee

Cosmetics
Red wine stain
Chocolate
Sweat
Bottom sock dirt
Butter and edible oil

Tea
Tomato
Strawberry
Orange

Stain treatment in detail - 2 examples

Egg
Soaked in lukewarm water, selected wash cycle with a higher water level and additional rinse cycles to remove particles

Blood
Blood is first "loosened" in cold water, then the selected wash programme starts.

For the other types of stain, we have formulated comparable solutions in our intensive studies.

Reload

If you want to add additional items of laundry after the programme has started, choose **Start/Reload**. The machine checks whether reloading is possible. Follow the instructions in the display panel.



For safety reasons, the washing machine door remains locked when the water level and/or temperature is high, or while the drum is rotating.

To continue the programme, press the **Start/Reload** button.

Overview of programmes → table of consumption values on page 8 and instructions on page 9.



Options; notes

Programmes	°C	max.	Type of laundry	Options; notes
Cottons	- - ... 90 °C	8 kg/ 5 kg*	Hard-wearing fabrics, heat-resistant fabrics made of cotton or linen	SpeedPerfect*, EcoPerfect, Prewash, Easy-Iron, Water Plus, Rinse Plus, Stains, Rinse stop
Sensitive	- - ... 60 °C		Hard-wearing fabrics made of cotton or linen	SpeedPerfect*, EcoPerfect, Prewash, Easy-Iron, Water Plus, Rinse Plus, Stains, Rinse stop ; for particularly sensitive skin, longer wash cycle at selected temperature, higher water level, additional rinse cycle
Easy-care	- - ... 60 °C		Easy-care fabrics made of cotton, linen, synthetic fibres or blended fabrics	SpeedPerfect, EcoPerfect, Prewash, Easy-Iron, Water Plus, Rinse Plus, Stains, Rinse stop
Mix	- - ... 40 °C	3,5 kg	Fabrics made of cotton and easy-care fabrics	SpeedPerfect, EcoPerfect, Prewash, Easy-Iron, Water Plus, Rinse Plus, Stains, Rinse stop ; different types of laundry can be washed together
Dark Wash	- - ... 40 °C		Dark-coloured fabrics made of cotton and dark easy-care fabrics	SpeedPerfect, EcoPerfect, Easy-Iron, Water Plus, Rinse Plus, Stains, Rinse stop ; reduced rinse + spin and final spin
Curtains	- - ... 30 °C		curtains weighing 3.5 kg, or light curtains measuring 25-30 m²	SpeedPerfect, EcoPerfect, Prewash, Easy-Iron, Water Plus, Rinse Plus, Stains, Rinse stop ; reduced rinse + spin and final spin
Shirts/Blouses	- - ... 60 °C		Non-iron shirts made of cotton, linen, synthetic fibres or blended fabrics	SpeedPerfect, EcoPerfect, Prewash, Easy-Iron, Water Plus, Rinse Plus, Stains, Rinse stop ; gentle spin only, hang up dripping wet
Down	- - ... 60 °C		machine-washable fabrics filled with down	SpeedPerfect, EcoPerfect, Water Plus, Rinse Plus, Stains, Rinse stop ; large parts individually wash detergent sparingly dosed
Delicates/Silk	- - ... 40 °C	2 kg	For delicate, washable fabrics, e.g. made of silk, satin, synthetic fibres or blended fabrics (e.g. curtains)	SpeedPerfect, EcoPerfect, Prewash, Easy-Iron, Water Plus, Rinse Plus, Stains, Rinse stop ; gentle spin between the rinse cycles only
Wool	- - ... 40 °C		Hand or machine-washable fabrics made of wool or containing wool	Rinse stop ; particularly gentle wash programme to prevent shrinkage of laundry; longer breaks during the programme (fabrics rest in the detergent solution)
SuperQuick 15'	- - ... 40 °C		Easy-care fabrics made of cotton, linen, synthetic fibres or blended fabrics	Rinse stop ; short programme, approx. 15 minutes, suitable for lightly soiled washing
Sport, Fitness	- - ... 40 °C		Fabrics made from microfibre	SpeedPerfect, EcoPerfect, Water Plus, Rinse Plus, Stains, Rinse stop
Additional programmes				Spin, Empty,

* reduced load for **SpeedPerfect** option

i **Mix 40 °C** with **maximum spin speed** is ideal as a **short programme**.

Programmes without prewash - add detergent to compartment II, programmes with prewash - distribute the detergent between compartments I and II.

0210 / 9000506278



WAS32794ME

Robert Bosch Hausgeräte GmbH
Carl-Wery-Str. 34
81739 München / Deutschland



Safety instructions

- Read the instruction manual and installation instructions and all other information enclosed with the washing machine and act accordingly.
- Retain the documents for subsequent use.

Risk of electric shock – Never pull the cable to disconnect the mains plug.
– Only insert/pull out the mains plug with dry hands.

Danger to life For worn-out appliances:
– Disconnect the mains plug.
– Sever the mains cable and discard along with the plug.
– Destroy the lock on the washing machine door. This will prevent children from locking themselves in and risking their lives.

Danger of suffocation – Keep packaging, film and packaging parts out of the reach of children.

Risk of poisoning – Keep detergents and care products out of the reach of children.

Risk of explosion – Items of laundry pretreated with cleaning agents containing solvents, e.g. stain remover/cleaning solvent may cause an explosion after being loaded into the washing machine.
Rinse items of laundry thoroughly by hand beforehand.

Risk of injury – The washing machine door can become very hot.
– Be careful when draining hot detergent solution.
– Do not climb onto the washing machine.
– Do not lean on the open washing machine door.
– Do not reach into the drum if it is still rotating.

Consumption values

Programme	Option	Load	Electricity consumption***	Water***	Programme duration***
Cottons 30 °C**		8 kg	0,33 kWh	57 l	2:06 h
Cottons 40 °C**		8 kg	0,95 kWh	57 l	2:16h
Cottons 60 °C**		8 kg	1,45 kWh	57 l	2:26 h
Cottons 60 °C	EcoPerfect *	8 kg	1,06 kWh	56 l	3:25 h
Cottons 90 °C		8 kg	2,32 kWh	68 l	2:16 h
Mix 40 °C**		3.5 kg	0,46 kWh	37 l	0:53 h
Easy-Care 40 °C**		3.5 kg	0,54 kWh	41 l	1:35 h
Delicate/Silk -- (cold)		2 kg	0,04 kWh	35 l	0:41 h
Delicate/Silk 30 °C		2 kg	0,14 kWh	35 l	0:41 h
Wool -- (cold)		2 kg	0,06 kWh	40 l	0:40 h
Wool 30 °C		2 kg	0,16 kWh	40 l	0:40 h

* Programme setting for testing and energy labelling in accordance with EU directive 92/75/EEC.

** Programme setting for testing in accordance with valid standard EN60456.
Note on comparative tests: For testing the test programmes, wash the specified load using the maximum spin speed.

As a **short programme** for coloureds, select the programme **Mix 40 °C** with the maximum spin speed.

***The values deviate from the indicated values depending on water pressure, hardness, and inlet temperature, ambient temperature, type, amount and soiling of the laundry, detergent used, fluctuations in the power supply and selected additional functions.



Important information



Before washing for the first time

Do not load any laundry into the machine. Turn on the tap. Add the following to compartment II:

- approx. **1 litre** water
- detergent (dosage according to the manufacturer's instructions for light soiling and the appropriate degree of water hardness)

Set the programme selector to **Easy-care 60 °C** and select **Start/Reload**. At the end of the programme, turn the programme selector to **Off**.



Protecting the laundry and the machine

- Empty pockets.
- Look out for metal items (paperclips, etc.).
- Wash delicates in a laundry bag (tights, curtains, underwired bras).
- Fasten zips, do up any buttons.
- Brush sand out of pockets and collars.
- Remove curtain fittings or place in the laundry bag.



Loading the laundry

Insert large and small items of laundry.

Take care not to trap items of laundry between the washing machine door and the rubber seal.



Laundry with varying degrees of soiling

Soiling level	Washing instructions
light	Wash new items of clothing separately. Do not prewash. If required, select the additional SpeedPerfect function.
medium	Pre-treat any stains as necessary.
heavy	Do not load as much laundry. Select the program with Prewash.



Soaking

Load laundry of the same colour.

Pour soaking agent/detergent into compartment II in accordance with the manufacturer's instructions. Turn the programme selector to **Cottons 30 °C** and press **Start/Reload**. After approx. 10 minutes, press **Start/Reload** to pause the programme. Once the required soaking time has elapsed, press **Start/Reload** again to continue the programme, or select a different programme.



Starching

Laundry must not be treated with fabric softener

Starching is possible in all wash programmes if liquid starch is used. Pour starch into the fabric softener compartment in accordance with the manufacturer's instructions (rinse first if necessary).



Dyeing/bleaching

Dye should only be used in normal household quantities. Salt may damage stainless steel. Always follow the dye manufacturer's instructions. Do **not** use the washing machine for bleaching clothes.



Load indicator

The load sensor detects how heavily the washing machine is loaded. The laundry is not weighed.



Recommended dosage

Based on the selected programme and the detected load, the recommended dosage function provides a recommendation for the detergent dosage in %. The % figure refers to the recommendation of the detergent manufacturer.



Automatic load sensing


Independently of the load indicator, the automatic load sensing function uses additional sensors to adapt the water and power consumption ideally to each programme, depending on the type of fabric and the load.

Insert for liquid detergent model-dependent

Position the insert for dispensing liquid detergent:

- Remove the detergent drawer completely → *page 10*.
- Slide the insert forwards.

Do not use the insert (slide upwards):

- for gel detergents and washing powder,
- for programmes with  **Prewash** or the **end time** option.



Care



- **Risk of electric shock.** Disconnect the mains plug.
- **Risk of explosion.** No solvents.

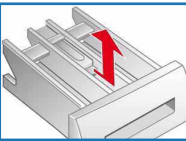
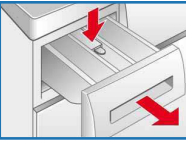
Machine housing, control panel

- Wipe with a soft, damp cloth.
- Do not use any abrasive cloths, scourers or cleaning agents (stainless steel cleaners).
- Remove detergent and cleaning agent residue immediately.
- Do not clean with a jet of water.

Cleaning the detergent drawer ...

... if it contains detergent or fabric softener residues.

1. Pull out, press insert down, remove drawer completely.
2. To remove the insert: press the insert upwards from below with your finger.
3. Clean the detergent dispenser tray and insert with water and a brush and dry it.
4. Attach the insert and engage (connect the cylinder to the guide pin).
5. Push in the detergent drawer.



Leave the detergent drawer open so that any residual water can evaporate.

Drum

Leave the washing machine door open so that the drum can dry out. Rust stains - use chlorine-free cleaning agent, not steel wool.

Descaling

No laundry in the machine.

This is not necessary if the detergent is dosed correctly. However, if it is necessary, follow the instructions of the descaler manufacturer. Suitable descaling products can be purchased from our website or after-sales service (→ *page 13*).

Information on the display panel depending on model

Door open?	Close the washing machine door properly; laundry may be caught.
Tap closed?	Open the tap completely, supply hose kinked or trapped; Clean the filter → <i>page 11</i> , Water pressure too low.
Pump blocked?	Detergent solution pump blocked; Clean the detergent solution pump → <i>page 11</i> . Drainage hose/waste pipe blocked; Clean the drainage hose at the siphon → <i>page 11</i> .
Top-up not possible; water level too high or Temperature too high	Not possible to add more laundry. To continue, press the Start/Reload button.
F: 23	Water in the base tub, appliance leaking. Call the after-sales service.
F: 34	Washing machine door cannot be locked. Open the washing machine door and close it with an audible "click"; switch the appliance off and on again; set the programme and make your settings; start the programme.
Other displays	Switch off the appliance, wait for 5 seconds and switch it back on. If the display appears again, call the after-sales service → <i>page 13</i> .

Information about blockages



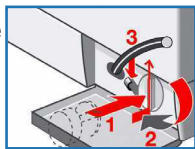
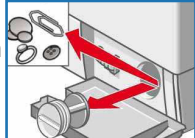
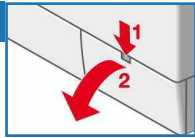
- **Risk of scalding.** Allow the detergent solution to cool down.
- Turn off the tap.




Detergent solution pump

Turn the programme selector to **Off** and disconnect the mains plug.

1. Open and remove the service flap.
2. Take the drainage hose out of the retainer. Remove the sealing cap, allow the detergent solution to flow out. Push the sealing cap back on.
3. Carefully unscrew the pump cover (residual water).
4. Clean the interior, pump cover thread and pump housing (the impeller in the detergent solution pump must rotate).
5. Replace the pump cover and screw it on tightly. The handle is vertical. Place the drainage hose back into the retainer.
6. Place the service flap back on and close.



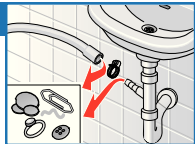
To prevent unused detergent from flowing straight into the drain during the next wash: Pour 1 litre of water into compartment **II** and start the  **Empty** programme.



Drainage hose at the siphon

Turn the programme selector to **Off** and disconnect the mains plug.

1. Loosen the hose clamp, carefully remove the drainage hose (residual water).
2. Clean the drainage hose and siphon connecting piece.
3. Reattach the drainage hose and secure the connection with the hose clamp.






Filter in the water supply

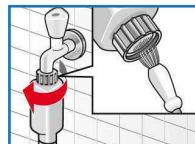


Risk of electric shock

Do not immerse the Aqua-Stop safety device in water (it contains an electrical valve).

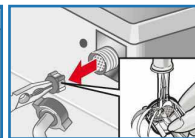
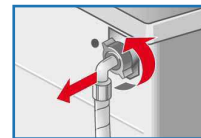
Reduce the water pressure in the supply hose:

1. Turn off the tap.
2. Select any programme (except  **Spin**/ **Empty**).
3. **Choose**  **Start/Reload**. Let the programme run for approximately 40 seconds.
4. Turn the programme selector to **Off**. Disconnect the mains plug. Clean the filter:
5. Disconnect the hose from the tap. Clean the filter with a small brush.

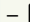
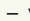
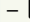
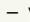
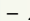


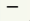


and/or for Standard and Aqua-Secure models: Remove the hose from the rear of the appliance. Remove the filter with pliers and clean.

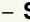


6. Connect the hose and check for leaks.



What to do if ...

- Water is leaking out.
 - Attach/replace the drainage hose correctly.
 - Tighten the screw connection of the supply hose.
- No water supply.
 -  **Start/Reload** not selected?
- Detergent not dispensed.
 - Tap not turned on?
 - Filter blocked? Clean the filter → *page 11*.
 - Supply hose kinked or trapped?
- Washing machine door cannot be opened.
 - Safety function active. Programme termination? → *page 4*.
 -  **Rinse stop** (no final spin) selected? → *page 3, 4*.
 - Can be opened by emergency release only? → *page 13*.
- Programme does not start.
 -  **Start/Reload** or **end time** selected?
 - Washing machine door closed?
 - Childproof lock active? Deactivate → *page 5*.
- Detergent solution is not drained.
 -  **Rinse stop** (no final spin) selected? → *page 3, 4*.
 - Clean the detergent solution pump → *page 11*.
 - Clean the waste pipe and/or drainage hose.
- Water not visible in the drum.
 - Not a fault - water below the visible area.
- Spin result not satisfactory. Laundry wet/too damp.
 - Not a fault - the unbalanced load detection system has cancelled the spin cycle due to uneven distribution of the laundry. Distribute large and small items of laundry evenly in the drum.
 -  **Easy-Iron** selected? → *page 5*.
 - Speed selected too low? → *page 5*.
- Spin cycle performed several times.
 - Not a fault - unbalanced load detection system is adjusting the imbalance.
- Residual water in the  compartment for care products.
 - Not a fault - the action of the care product is not affected.
 - Clean the insert if necessary → *page 10*.
- Odour formation in the washing machine.
 - Run programme  **Cottons 90 °C** without laundry. Use standard detergent.
- The  status indicator lights up. Appliance has detected a detergent overload.
 - Too much detergent used? Mix 1 tablespoon of fabric softener with ½ litre of water and pour into compartment **II** (*not with outdoor or down fabrics*).
 - Reduce the detergent dosage for the next wash cycle.
- Loud noise generated, vibrations and “wandering” during the spin cycle.
 - Are the appliance feet fixed? Secure the appliance feet → *Installation instructions*.
 - Transportation safety devices removed? Remove the transportation safety devices → *Installation instructions*.
- Display panel/indicator lamps do not function during operation.
 - Power cut?
 - Circuit breakers tripped or fuses blown? Reset the circuit breakers or change the fuses.
 - If the fault occurs repeatedly, call the after-sales service.
- Programme sequence longer than usual.
 - Not a fault - unbalanced load detection system adjusts imbalance by repeatedly distributing the laundry.
 - Not a fault - foam detection system active - several rinse cycles are added.

What to do if ...

- Detergent residues on the laundry.
 - Occasionally, phosphate-free detergents contain water-insoluble residues.
 - **Select**  **Rinse** or brush the laundry after washing.
 - In Reload mode,  Start/Reload flashes very quickly and a signal sounds.
 - Water level too high. Not possible to add laundry. Close the washing machine door immediately if necessary.
 - To continue, press the  Start/Reload button.
- If you cannot correct a fault yourself (switching on/off) or a repair is required:
- Turn the programme selector to **Off** and remove the mains plug from the socket.
 - Turn off the water supply and call the after-sales service → *S.13*.

Emergency release e.g. in the event of a power cut



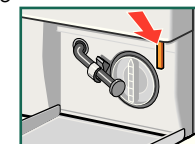
The programme continues when the power supply is restored. However, if the laundry has to be removed, the washing machine door can be opened as follows:



Risk of scalding.

The detergent solution and laundry may be hot. If possible, leave it to cool down. Do not reach into the drum if it is still rotating. Do not open the washing machine door if water can be seen through the glass.

1. Turn the programme selector to **Off** and disconnect the mains plug.
2. Drain the detergent solution → *page 11*.
3. Pull the emergency release downwards with a tool and release. Washing machine door can then be opened.



After-sales service

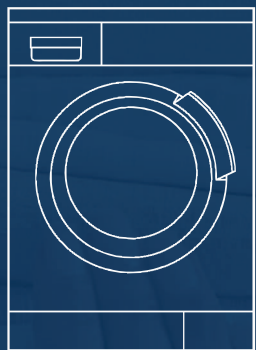
- If you cannot rectify the fault yourself (Troubleshooting → *page 12, 13*), please contact our after-sales service. We will always find a suitable solution and will avoid a visit from a service technician wherever possible.
- You can find the contact details for your nearest after-sales service here or in the after-sales service directory (depending on model). **You find the regional service contact of all countries in the enclosed service booklet.**
- Please give the after-sales service the product number (E no.) and the production number (FD) of the appliance.

E-Nr. _____ FD _____

Product number Production number

This information can be found: on the inside of the washing machine door/ opened service flap* and rear of the appliance. *depending on the model*

- **Rely on the professionalism of the manufacturer.** Please contact us. This will ensure that the repair is carried out by trained service technicians who arrive equipped with genuine spare parts for your appliance.



Washing machine

Instruction manual

en



BOSCH



Observe the safety instructions on page 8.



Read these instructions and the separate installation instructions before operating the washing machine.