



Brief and handy:
everything your dishwasher
needs ...
**Before using for the first time,
read the Installation instructions
and Operating instructions!**

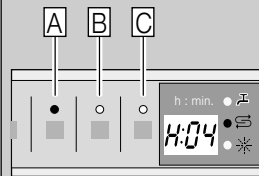
1

Adjusting the water softening system *

Ask your water
supply company
what the water
hardness
is and enter ...

* only before the first
wash or if the
water hardness
has been changed

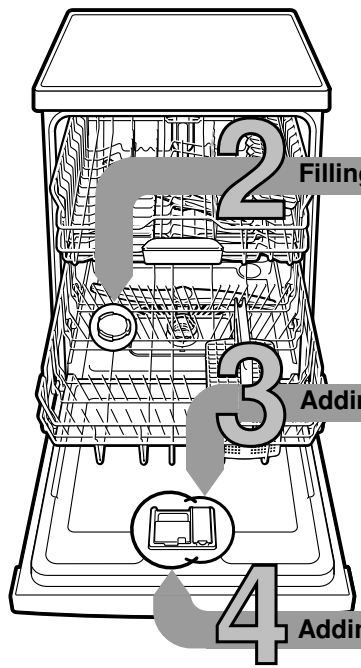
Water hardness value * Clarke	Hardness range	mmol/l	Factory setting
0-8	soft	0-1.1	H:00
9-10	soft	1.2-1.4	H:01
11-12	medium	1.5-1.8	H:02
13-15	medium	1.9-2.1	H:03
16-20	medium	2.2-2.9	H:04
21-26	hard	3.0-3.7	H:05
27-38	hard	3.8-5.4	H:06
39-62	hard	5.5-8.9	H:07



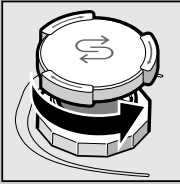
Quickly sorted ...

How to adjust

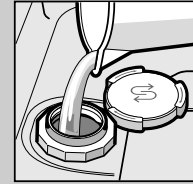
- Switch on ON/OFF switch.
- Hold down programme button **A** and press START button until **H:0...** is indicated on the digital display.
- Release both buttons.
The LED for button **A** flashes and the factory set value of **H:04** is indicated on the digital display.
- Press programme button **C**.
Each time the button is pressed the set value increases by one setting; when the value reaches **H:07**, the display jumps back to **H:00** (off).
- Press START button. The chosen setting has now been stored.



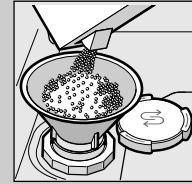
Filling the salt dispenser Dissolves limescale (not necessary for set value 0!) ...



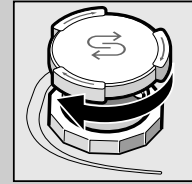
Unscrew
cover.



Fill the salt
dispenser with
water before
the first wash only.

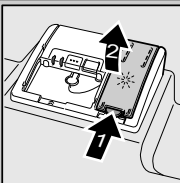


Add **special salt**
(never add
detergent!).

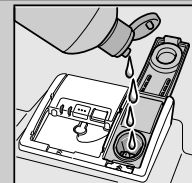


Screw on
the cover.
Wash
immediately.

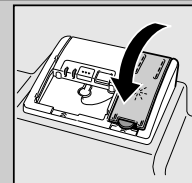
Adding rinse aid



Press
mark 1,
lift up
cover 2.

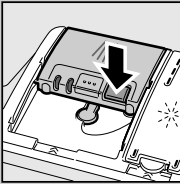


Fill in
rinse aid.



Screw on
the cover.
CLICK!

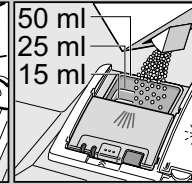
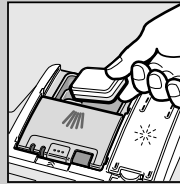
Adding detergent



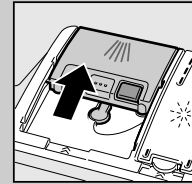
If required,
open the cover
(press button).



Attention:
Combination
products
are not suitable
for all programmes,
follow
manufacturer's
instructions.



Pour detergent
into the dry
detergent
dispenser only.



Slide cover
shut, press.
PLOP!

Switching on the appliance

Select programme

Quick, economical or intensive ...

Overview of programmes

The max. possible number of programmes
is illustrated in this overview.
The corresponding programmes for your appliance
can be found on the fascia.

The programme data has been measured
in the laboratory according to European
standard EN 50242.
Deviations are possible in practice.
* half normal load

	Auto 65°–75° 	Auto 45°–65° 	Eco 50° 	Auto 35°–45° 	Quick 45° 	Prerinse
Duration: hs : mins	1:40-2:15	1:30-2:30	2:20	1:05-1:20	0:29 *	0:15
Energy consumption in kWh	1,30-1,60	0,95-1,60	0,96	0,70-0,85	0,80	0,05
Water consumption in litres	-	-	10	-	10	4
With Aquasensor	11-15	8-19	-	10-15	-	-

Start programme Here we go ...

Switch off the appliance Everything o.k. ...

Additional options **

Express Wash
... is obtained by increased
energy consumption
at a constant cleaning
performance.

Half load
... for a few items,
saves water, energy
and time.

Intensive zone
... perfect for
a mixed load.
Washing pressure
and washing temperature
are increased slightly.

Hygiene
... the temperature
is increased during
the final rinse process.
This increases
the hygiene status.

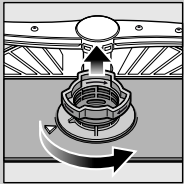
Extra drying
... improves the drying
result by increased
temperature
in the final rinse.
(Please take care
with delicate dishes.)

** depending on model

Maintenance and care

Filters

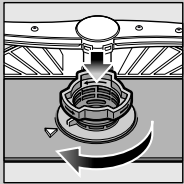
... check, if required, clean.



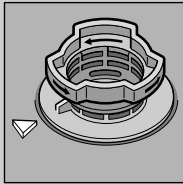
Rotate filter cylinder, remove filter system ...



rinse under running water ...



insert ...



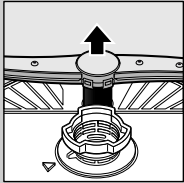
Screw on filter system
NOTE MARK!

Cleaning waste water pump

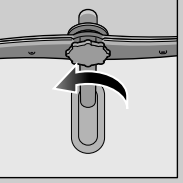
- Pull out the mains plug.
- Remove filters and scoop out water.
- Lever off cover (A).
- Check area around the fan impeller for foreign objects.
- Click cover shut (B).
- Insert filters.

Spray arms

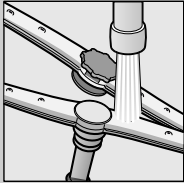
... Remove blockages/deposits.



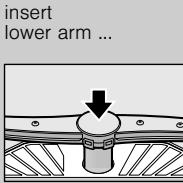
pull lower arm upwards ...



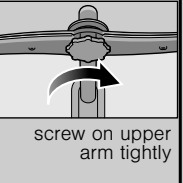
unscrew upper arm ...



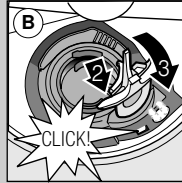
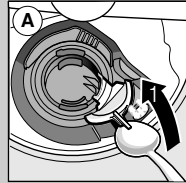
clean spray nozzles under running water (if required use toothpicks) ...



insert lower arm ...



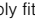
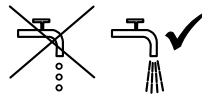
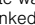
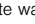
screw on upper arm tightly

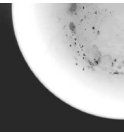


Rectifying minor faults yourself ...

... as it is worth doing it yourself!

More information can be found in the operating instructions

Fault	Possible causes	Remedial action
Display “  ” is lit	Supply fitting jammed or calcified	<ul style="list-style-type: none">▶ Open supply fitting.▶ 1. Unscrew water connection.▶ 2. Clean filter in the water connection.▶ 3. Flow rate must be min. 10 l/min., when water supply is open.▶ If the flow rate is less, replace the supply fitting.
		<ul style="list-style-type: none">▶ Install supply hose without kinks.
Display “E:24” and “  ” are lit	Waste water hose is blocked or kinked	<ul style="list-style-type: none">▶ Install waste water hose without kinks.
	Cover not attached to waste water pump	<ul style="list-style-type: none">▶ Attach cover (see above).
Display “E:25” and “  ” are lit	Waste water pump blocked	<ul style="list-style-type: none">▶ Clean waste-water pump (see above).
Other fault display “E:XX” is lit	Appliance has technical defect	<ul style="list-style-type: none">▶ Call factory customer service (state fault display).▶ Unplug appliance.
Residual water in the appliance	The programme has not yet ended	<ul style="list-style-type: none">▶ Switch on and close the appliance or terminate the programme (see Terminating the programme).
Rust on the cutlery	Cutlery not rust-resistant Hard knife blades are more susceptible Extraneous rust	<ul style="list-style-type: none">▶ Use dishwasher-proof cutlery.▶ Never wash rusting parts in the appliance.

Fault	Possible causes	Remedial action
Utensils are not clean	Utensils are situated close together or one above the other	<ul style="list-style-type: none">▶ Separate the utensils, prevent contact points.
Sand or gritty residue on the utensils	Too little detergent Unsuitable programme selected Spray arm nozzles blocked Filters dirty, not seated firmly Spray arms blocked	<ul style="list-style-type: none">▶ Follow manufacturer's instructions (detergent).▶ Select a more intensive programme.▶ Clean the spray arms (see above).▶ Clean the filters (see above).▶ Arrange the utensils so that the spray arms can rotate freely.
		
Stains and streaks	Rinse aid dosage too high/too low	<ul style="list-style-type: none">▶ Streaks: reduce dosage.▶ Water or limescale stains: increase dosage.
Utensils not dry	Rinse aid The combined detergent used has a poor drying performance Appliance setting	<ul style="list-style-type: none">▶ Increase dosage.▶ Change the product.▶ Use rinse aid.▶ Activate intensive drying (depending on model).
Milky deposits on the utensils (can be removed)	Water softening system incorrectly set No salt	<ul style="list-style-type: none">▶ Correctly set water softening system.▶ Refill with special salt.
Milky deposits, glasses cloudy/tarnished (cannot be removed)	Glasses not dishwasher-proof	<ul style="list-style-type: none">▶ Use dishwasher-proof glasses.
		<ul style="list-style-type: none">▶ Use a detergent suitable for glasses.
Plastic/utensils discoloured	Too little detergent Discoloration caused by food colourings (tomato sauce)	<ul style="list-style-type: none">▶ Follow manufacturer's instructions (detergent).▶ Discoloration is harmless; subsequent rinse cycles will cause it to fade.

Terminating the programme ...

While the programme is running, press the START button for approx. 3 sec. (Reset).



The numerical display indicates “0:01”; approx. 1 minute after the programme ends, “0:00” is indicated.



Switch off the appliance.

Loading the dishwasher correctly ...

Dishwasher-proof utensils (not soiled with ash, wax, lubricating grease, ink or adhesive labels; remove large remnants of jam, milk products and food according to the operating instructions and check that the spray arms can rotate freely.