



Quick and easy:
everything you need to know
about your dishwasher...
**You should, however, still
read the installation and
operating instructions before
you use the dishwasher for
the first time.**

1

Pour in the water/special salt

2

Pour in the rinsing agent

3

Pour in the cleaning agent

4

5

Select the programme

7

Switch on the appliance the dishwasher starts...

Press the on/off switch, the cycle time
for the programme selected appears

Switch off the appliance that's it...

Press the on/off switch when
the indicator shows 0 (programme end)

Set the water softening system *

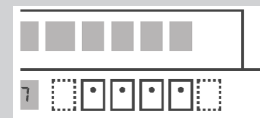
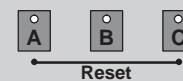
Find out the **water hard-
ness** at your water utility
company and **enter**



* only **before using** the dish-
washer **for the first time** or
if the **water hardness**
changes

Read off the setting ...

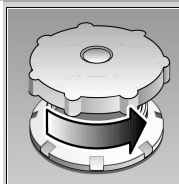
°dH	°fH	°Clarke	mmol/l	
0-6	0-11	0-8	0-1,1	0
7-8	12-15	9-10	1,2-1,4	1
9-10	16-17	11-12	1,5-1,8	2
11-12	18-21	13-15	1,9-2,1	3
13-16	22-29	16-20	2,2-2,9	4
17-21	30-37	21-26	3,0-3,7	5
22-30	38-54	27-38	3,8-5,4	6
31-50	55-89	39-62	5,5-8,9	7



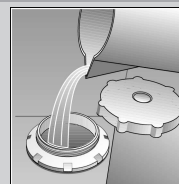
Quickly sorted ...
and then set

- Hold down programme button **B** and switch on the main switch, then release the buttons. The display of button **B** and the number **4** set by the factory flash.
- Each time button **B** is depressed, the setting increases by one; if **7** has been reached, the display jumps back to **0**.
- Switch off the main switch. The selected setting has been stored in the appliance.

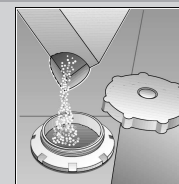
Dissolves limescale (not required for set value **0**!)



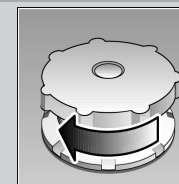
Unscrew
the lid.



Only **before using** the dish-
washer **for the first time**
pour approx. 1 l /
1 1/4 pt water into
the salt opening.

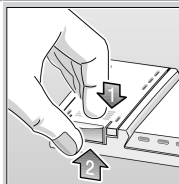


Pour in max.
1.5 kg / 3 lb 5 oz
salt (never deter-
gent!)



Screw on the
lid. Switch on
dishwasher
immediately.

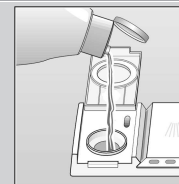
Everything is sparkling clean ...



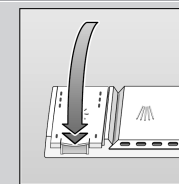
Press mark 1,
lift up lid 2.



Refill whenever level indicator is light!

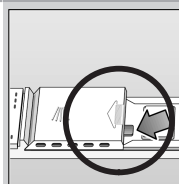


Pour in
rinse aid.



Close the
lid. **CLICK!**

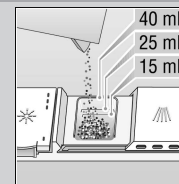
Very dirty dishes, a lot of detergent ...



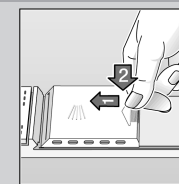
If required, open
the lid (press the
pin).



Warning,
combination
products are not
suitable for all
programmes,
follow manufac-
turer's instructions.



Pour in
detergent.



Push the lid
shut, press.
PLOP!

Quick, economical or intensive ...

Programme overview

This overview lists the max. possible number of
programmes. The programmes supplied with your
appliance are indicated on the fascia.

The programme data are values measured in the
laboratory in compliance with Standard EN 50242.
Deviations in practice are possible.

	Intensive 70°	Auto 55° /65°	Eco 50°	Gentle 40°	Quick 45°	Prerinse
Duration in minutes	138	85–140	140	75	30	19
Electricity consumption in kWh	1,65	1,10–1,60	1,05	0,90	0,80	0,05
Water consumption in litres	16	10–17	13	14	10	4,0
with Aquasensor	13	–	–	11	–	–

Additional programmes **



Time selection

...switches on as soon as
you press the time
selection button:
Alters the programme
start in hourly steps



Saving time (VarioSpeed)

... is obtained by increased
energy consumption at
a constant cleaning and
drying performance.



Half load

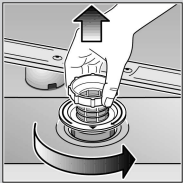
... for a few items, saves
water, energy and time

** some models

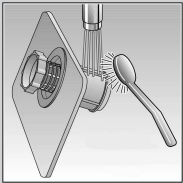
Maintenance and care

Filters

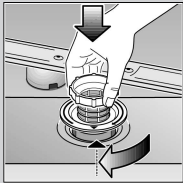
Check and, if required, clean:



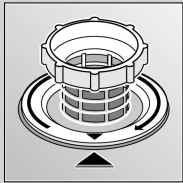
Rotate filter cylinder, remove filter system



Rinse under running water



Insert

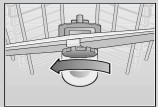
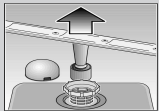


Screw on filter system. NOTE MARK!

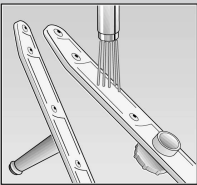
Spray arms

Remove blockages/deposits

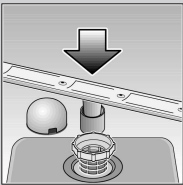
Pull up lower arm



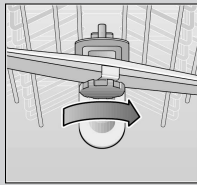
Unscrew upper arm



Clean under running water (if required, use a toothpick)



Insert lower arm



Screw on upper arm

Rectifying minor faults yourself ...

... as it is worth doing it yourself!

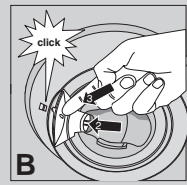
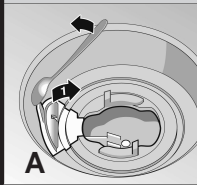
Fault	Possible causes	Remedial action
"Check water supply" display lights up	Supply fitting jammed or calcified	<ul style="list-style-type: none">▶ Open supply fitting.▶ 1. Unscrew water connection.▶ 2. Clean filter in the water connection.▶ 3. Flow rate must be min. 9 l/min. when water supply is open.▶ If the flow rate is less, replace the supply fitting.▶ Install supply hose without kinks.
Residual water in the appliance and "Check water supply" display lights up	Waste water pump blocked	<ul style="list-style-type: none">▶ Clean waste-water pump (see above).
	The programme has not yet ended	<ul style="list-style-type: none">▶ Switch on and close the appliance or terminate the programme (see Terminating the programme).
	Waste water hose is blocked or kinked	<ul style="list-style-type: none">▶ Install waste water hose without kinks.
Plastic/utensils discoloured	Too little detergent	<ul style="list-style-type: none">▶ Follow manufacturer's instructions (detergent).
	Discoloration caused by food colourings (tomato sauce)	<ul style="list-style-type: none">▶ Discoloration is harmless; subsequent rinse cycles will cause it to fade.
Rust on the cutlery	Cutlery not rust-resistant	<ul style="list-style-type: none">▶ Use dishwasher-proof cutlery.
	Hard knife blades are more susceptible	
	Extraneous rust	<ul style="list-style-type: none">▶ Never wash rusting parts in the appliance.

Fault	Possible causes	Remedial action
Utensils are not clean	Utensils are situated close together or one above the other	<ul style="list-style-type: none">▶ Separate the utensils, prevent contact points.
Sand or gritty residue on the utensils	Too little detergent	<ul style="list-style-type: none">▶ Follow manufacturer's instructions (detergent).
	Unsuitable programme selected	<ul style="list-style-type: none">▶ Select a more intensive programme.
	Spray arm nozzles blocked	<ul style="list-style-type: none">▶ Clean the spray arms (see above).
	Filters dirty, not seated firmly	<ul style="list-style-type: none">▶ Clean the filters (see above).
	Spray arms blocked	<ul style="list-style-type: none">▶ Arrange the utensils so that the spray arms can rotate freely.
Stains and streaks	Rinse-aid dosage too high/too low	<ul style="list-style-type: none">▶ Streaks: reduce dosage.▶ Water or limescale stains: increase dosage.
Milky deposits on the utensils (can be removed)	Water softening system incorrectly set;	<ul style="list-style-type: none">▶ Correctly set water softening system.
	No salt	<ul style="list-style-type: none">▶ Refill with salt.
Milky deposits, glasses cloudy/tarnished (cannot be removed)	Glasses not dishwasher-proof	<ul style="list-style-type: none">▶ Use dishwasher-proof glasses.
		<ul style="list-style-type: none">▶ Use a detergent suitable for glasses.

Waste water pump *

* some models

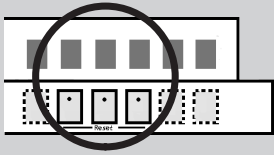
- Set main switch to OFF
- Scoop out any water
- Remove the filters
- Remove the cover (⇒A)
- Check the inner compartment for foreign objects and, if required, remove foreign objects
- Re-insert the cover (⇒B)
- Re-insert the filters and screw into position



More information can be found in the operating instructions

Stopping the programme ...

Press and hold the two reset buttons simultaneously for approximately 3 seconds while the programme is running (RESET)



"0" appears

The programme will stop after 1 minute



Switch off the appliance.

Loading the dishwasher correctly ...

Arrange dishwasher-proof utensils (having removed any ash, wax, grease, ink, sticky labels; remove, large remnants of jam, dairy products and food) according to the operating instructions and check that the spray arms can rotate freely.