

## Your new dryer

**Congratulations** – You have opted for a modern, high-quality domestic appliance of the Bosch brand. The vented dryer is distinguished by its economical energy consumption.

Each dryer which leaves our factory is inspected thoroughly to ensure that it functions properly and is in perfect condition.

If you have any questions, please do not hesitate to contact our customer service.

### Environmental disposal

Dispose of packaging in an environmentally friendly manner.

This appliance has been identified in accordance with the European directive 2002/96/EG on Waste Electrical and Electronic Equipment – WEEE.

The directive specifies the framework for an EU-wide valid return and recycling of old appliances.

## Contents

■ Preparation	2
■ Setting programmes	2
■ After drying	4
■ About the washing	5
■ Servicing and cleaning	6
■ Overview of programmes	7
■ Installation	8
■ Technical specifications	9
■ Optional accessories	9
■ What to do if...	10
■ Safety instructions	11

Intended

## Use

- only in the household;
- only for drying textiles which have been washed with water.

- Do not leave children unattended near the dryer!
- Keep pets away from the dryer!

## Preparation

Installation, see page 8

- Never use a damaged dryer! Notify customer service!

Check the dryer

- With dry hands only! Touch the plug only!

Insert the mains plug

### Sort and put in the washing

Take all objects out of the pockets. Look out for cigarette lighters! The drum must be empty before it is loaded!

See overview of programmes on page 7.

### Selecting + setting programme

Select drying programme ...

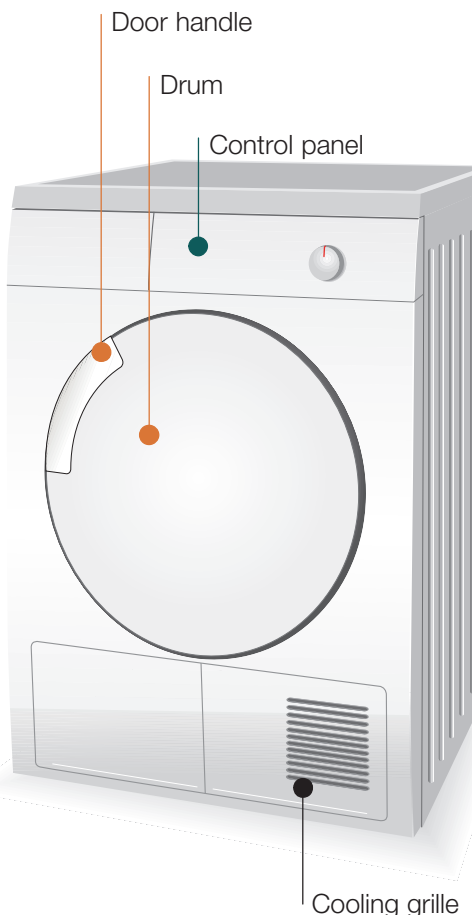
... and adjust

All buttons need only a light touch.

Select Start button

Select additional function	Status displays	Remaining time	Programme selector
<ul style="list-style-type: none"> <li>Low Heat</li> <li>Buzzer</li> </ul>	<ul style="list-style-type: none"> <li>Drying</li> <li>Iron Dry</li> <li>Cupboard Dry</li> <li>Anti-Crease/End</li> <li>Door</li> <li>Filter/Venting Hose</li> </ul>	<p>h:min</p>	<p>Easy-Care</p> <p>Very Dry</p> <p>Cupboard Dry</p> <p>Iron Dry</p> <p>Short Programme</p> <p>Freshen up</p> <p>Timed Programmes</p> <p>Warm 40 min.</p> <p>Finish</p> <p>Woolens</p> <p>Off</p> <p>Cottons</p> <p>Extra Dry</p> <p>Very Dry</p> <p>Cupboard Dry</p> <p>Iron Dry</p> <p>Start Stop</p> <p>Anti-Crease/End</p>
<p>Low heat ↓↓</p> <p>Buzzer</p>	<p>Service displays</p> <p>Filter/Venting Hose</p> <p>Door</p>	<p>h:min</p> <p>End of programme in 1*–24 hours (Press button several times if required) (*depending on the selected programme, e.g. duration 1:54h → 2h. Can always be selected to the next full hour.)</p> <p>Clean fluff filter. Check exhaust air line.</p> <p>Close door</p>	<p>Reduced temperature for sensitive textiles ☐, e.g. polyacrylic, polyamide, elastane, acetate for longer drying time</p> <p>Select On/Off for acoustic signal at end of programme</p>

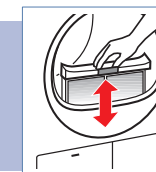
## Drying



## Drying

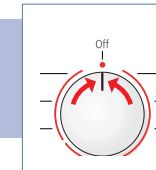
### Cleaning the fluff filter

- Open door, pull out filter and open.
  - Remove fluff (run hand over filter).
  - Close filter, re-insert and close door.
- Rinse extremely soiled or blocked filters with warm water and dry thoroughly!



### Switching off the dryer

Set programme selector to **Off**. Do not leave damp washing in the dryer!



### Removing washing

The automatic anti-crease function causes the drum to move at specific intervals, the washing remains loose and fluffy for an hour (two hours if the **Reduced ironing** function is also selected – depending on model).

### Programme end

as soon as the light comes on

### Topping up or removing washing

- Open the door, the drying process is interrupted.
- Add or remove washing and close the door.
- If required, reselect the programme and additional functions.
- Select **Start/Stop** button.

- Drum and door may be hot.

## About the washing...

### Identifying textiles

#### Follow care information of the manufacturer!

- Dry at normal temperature.
- Dry at low temperature → also select **Low Heat** ↓↓.
- Do not dry by machine.

Do not dry the following textiles in the dryer:

- Airtight textiles (e.g. rubberised).
- Delicate fabrics (silk, synthetic curtains) → creases will form!
- Dripping wet washing → high energy consumption!
- Oil-contaminated washing.

### Drying tips

- For a uniform drying result, sort the washing according to fabric type and drying programme.
- Close zips, fasten hooks and eyes, button up quilt covers, tie fabric belts, apron strings, etc.
- Do not overdry the washing → risk of creasing! Leave the washing to air.
- Do not iron the washing immediately after drying. Fold up the washing for a while → residual moisture will then be distributed evenly.
- Knitted textiles (e.g. T shirts, knitted underwear) often shrink when dried for the first time → Do not use the **Extra Dry** programme.
- The drying of starched washing should be limited → Starch leaves a coating which impairs drying.
- Use the Timed Programme for a small load.

### Protection of the environment / Conservation of energy

- Before drying, thoroughly spin the washing in the washing machine → Higher spin speeds reduce the drying time and lower the energy consumption; also spin easy-care washing.
- Use the maximum recommended load, but do not exceed it → Page 7, "Overview of programmes".
- Ensure that the room is well ventilated during the drying process.
- Clean the fluff filter after each drying process → Page 7.
- Ensure that the cooling air flow is not obstructed → Do not block or seal the cooling grille.

## Servicing and cleaning

Appliance must be switched off!

### Dryer housing, control panel, cooling grille

- Rub with a soft, damp cloth.
- Do not use any caustic cleaning agents/solvents.
- Immediately remove washing and cleaning agent residue.

### Exhaust air duct

Check exhaust air line. Clean the exhaust air duct every year. Do not kink the exhaust air duct.

- Switch off the dryer and allow it to cool down.
- Pull out the mains plug.
- Remove the exhaust air duct.
- Clean the exhaust air duct.
- Refit the exhaust air duct (see the installation instructions for the exhaust air duct)

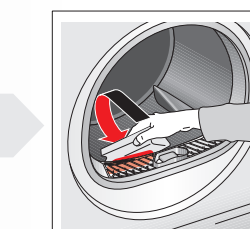
### Moisture sensor

The dryer is equipped with moisture sensors made of stainless steel. The moisture level of the washing is measured with the moisture sensors.

After a longer operating time, a fine layer of limescale may form on the moisture sensors.

- Open the door.
- Clean the moisture sensor using a damp sponge with a rough surface (scouring pad).

- Do not use steel wool or abrasive materials.





# Your new dryer

**Congratulations** – You have opted for a modern, high-quality domestic appliance of the Bosch brand. The vented dryer is distinguished by its economical energy consumption.

Each dryer which leaves our factory is inspected thoroughly to ensure that it functions properly and is in perfect condition.

If you have any questions, please do not hesitate to contact our customer service.

## Environmental disposal

Dispose of packaging in an environmentally friendly manner.

This appliance has been identified in accordance with the European directive 2002/96/EG on Waste Electrical and Electronic Equipment – WEEE.



The directive specifies the framework for an EU-wide valid return and recycling of old appliances.

## Contents

	Page
■ Preparation	2
■ Setting programmes	2
■ After drying	4
■ About the washing	5
■ Servicing and cleaning	6
■ Overview of programmes	7
■ Installation	8
■ Technical specifications	9
■ Optional accessories	9
■ What to do if...	10
■ Safety instructions	11

Intended

## Use

- only in the household;
- only for drying textiles which have been washed with water.



- Do not leave children unattended near the dryer!
- Keep pets away from the dryer!

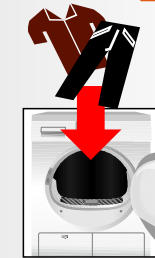
## Preparation



Never use a damaged dryer!  
Notify customer service!



With dry hands only!  
Touch the plug only!



## Sort and put in the

Take all objects out of the drum.  
Look out for lint.  
The drum must be empty.

See overview of programmes on page 7.

## Selecting + setting pr

Select drying pr

Select additional function	Status displays	Remaining time	Programme selector
<p>Low Heat </p> <p>Buzzer </p>	<ul style="list-style-type: none"> <li>● Drying</li> <li>● Iron Dry</li> <li>● Cupboard Dry</li> <li>● Anti-Crease/End</li> <li>● Door</li> <li>● Filter/Venting Hose</li> </ul>	<p>h:min </p>	<p>Easy-Care </p> <p>Very Dry</p> <p>Cupboard Dry</p> <p>Iron Dry</p> <p>Short Programme</p> <p>Freshen up </p> <p>Timed Programmes Warm 40 min.</p> <p>Off</p> <p> Cottons</p> <p>Extra Dry</p> <p>Very Dry</p> <p>Cupboard Dry</p> <p>Iron Dry</p> <p>Finish</p> <p>Woolens</p> <p>Start Stop </p>
	<p>Service displays</p> <p>h:min </p>	<p>End of programme in 1*–24 hours (Press button several times if required) (*depending on the selected programme, e.g. duration 1:54h → 2h. Can always be selected to the next full hour.)</p>	
	<p>Filter/Venting Hose</p>	<p>Clean fluff filter. Check exhaust air line.</p>	
	<p>Door</p>	<p>Close door</p>	
<p>■ Low heat </p>	<p>Reduced temperature for sensitive textiles  e.g. polyacrylic, polyamide, elastane, acetate for longer drying time</p>		
<p>■ Buzzer </p>	<p>Select On/Off for acoustic signal at end of programme</p>		

ation, see page 8

**Check the dryer**



**Insert the mains plug**



**Washing**

Remove items from the pockets, or cigarette lighters! before it is loaded!



**Programme**

Programme ... 1

... and adjust 2

only a light touch.

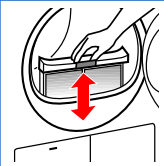
Start button 3



### Cleaning the fluff filter

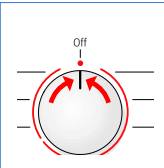
1. Open door, pull out filter and open.
2. Remove fluff (run hand over filter).
3. Close filter, re-insert and close door.

Rinse extremely soiled or blocked filters with warm water and dry thoroughly!



### Switching off the dryer

Set programme selector to **Off**. Do not leave damp washing in the dryer!



### Removing washing

The automatic anti-crease function causes the drum to move at specific intervals, the washing remains loose and fluffy for an hour (two hours if the **Reduced ironing** function is also selected – depending on model).

**Programme end** as soon as the light comes on



### Topping up or removing washing

1. Open the door, the drying process is interrupted.
2. Add or remove washing and close the door.
3. If required, reselect the programme and additional functions.
4. Select **Start/Stop** button.



Drum and door may be hot.

# About the washing...



## Identifying textiles

### Follow care information of the manufacturer!



Dry at normal temperature.



Dry at low temperature → also select **Low Heat** ↓↓.



Do not dry by machine.



Do not dry the following textiles in the dryer:

- Airtight textiles (e.g. rubberised).
- Delicate fabrics (silk, synthetic curtains) → creases will form!
- Dripping wet washing → high energy consumption!
- Oil-contaminated washing.

## Drying tips

- For a uniform drying result, sort the washing according to fabric type and drying programme.
- Close zips, fasten hooks and eyes, button up quilt covers, tie fabric belts, apron strings, etc.
- Do not overdry the washing → risk of creasing! Leave the washing to air.
- Do not iron the washing immediately after drying. Fold up the washing for a while → residual moisture will then be distributed evenly.
- Knitted textiles (e.g. T shirts, knitted underwear) often shrink when dried for the first time → Do not use the **Extra Dry** programme.
- The drying of starched washing should be limited → Starch leaves a coating which impairs drying.
- Use the Timed Programme for a small load.

## Protection of the environment / Conservation of energy

- Before drying, thoroughly spin the washing in the washing machine → Higher spin speeds reduce the drying time and lower the energy consumption; also spin easy-care washing.
- Use the maximum recommended load, but do not exceed it → Page 7, "Overview of programmes".
- Ensure that the room is well ventilated during the drying process.
- Clean the fluff filter after each drying process → Page 4.
- Ensure that the cooling air flow is not obstructed → Do not block or seal the cooling grille.

# Servicing and cleaning

 Appliance must be switched off!



## Dryer housing, control panel, cooling grille

- Rub with a soft, damp cloth.
- Do not use any caustic cleaning agents/solvents.
- Immediately remove washing and cleaning agent residue.



## Exhaust air duct

Check exhaust air line. Clean the exhaust air duct every year. Do not kink the exhaust air duct.

1. Switch off the dryer and allow it to cool down.
2. Pull out the mains plug.
3. Remove the exhaust air duct.
4. Clean the exhaust air duct.
5. Refit the exhaust air duct (see the installation instructions for the exhaust air duct)



## Moisture sensor

The dryer is equipped with moisture sensors made of stainless steel. The moisture level of the washing is measured with the moisture sensors.

After a longer operating time, a fine layer of limescale may form on the moisture sensors.

1. Open the door.
2. Clean the moisture sensor using a damp sponge with a rough surface (scouring pad).



Do not use steel wool or abrasive materials.



# Technical specifications

- <b>Dimensions (D x W x H)</b>	60 x 60 x 85 cm (height-adjustable)
- <b>Weight (net)</b>	approx. 36 kg
- <b>Max. capacity</b>	8 kg
- <b>Supply voltage</b>	} see appliance rating plate
- <b>Connected load</b>	
- <b>Fuse</b>	
- <b>Product number</b>	
- <b>Production number</b>	

The appliance rating plate is situated on the rear of the dryer.

**Consumption values** Specifications are approximate values determined under normal conditions. Fluctuations up to 10 % are possible.

	Spin speed r.p.m. (residual humidity)		Drying time in min. with 8 min. cooling time	Energy consumption in kWh
<b>Cottons 8 kg</b>				
Cupboard Dry*	1400 (approx. 50%)		95	3.50
	1000 (approx. 60%)		118	4.20
	800 (approx. 70%)		135	4.79
Iron Dry	1400 (approx. 50%)		67	2.37
	1000 (approx. 60%)		90	3.15
	800 (approx. 70%)		107	3.84
<b>Easy-care 3.5 kg</b>	1000			
Cupboard Dry*	800 (approx. 40%)		37	1.18
	600 (approx. 50%)		44	1.48

\* Test programmes according to DIN EN 61 121 and IEC 61 121

**Drum light** (depending on model)  
(Bulb E14, 15 W)

The drum is lit when the door is opened and closed or when the programme starts; it goes out automatically.

# Optional accessories

Order no.

WTZ 1130 **Exhaust air set** (depending on model)  
The exhaust air is conveyed directly via a hose.

WTZ 11310 **Connection set for washing-drying column**  
This connection set must always be used to secure the dryer to the washing machine.

WTZ 11300 Same as WTZ 11310 but with removable worktop.

WTZ 10290 **Installation underneath the worktop**

**Risk of electric shock!**

Instead of the appliance covering plate, you must have a metal cover fitted by an expert.

# What to do if...



Repairs may be carried out by customer service or authorised technicians only!

Before you call customer service, please check whether you can correct the fault yourself. You will be charged if a technician is called out, even during the warranty period. Please give customer service the product number (E no.) and the production number (FD) of the appliance (see inside of door).

● <b>Start/Stop</b> ◊ indicator light does not come on.	Is the mains plug inserted? Programme selected? Check the household fuse.
● <b>Filter /Venting Hose</b> and <b>Start/Stop</b> ◊ indicator lights are flashing.	Clean fluff filter, <i>page 4</i> . Exhaust air duct blocked or kinked? → Clean the exhaust air duct, <i>page 6</i> .
● Dryer does not start.	<b>Start/Stop</b> ◊ button selected? Door closed? Programme set? Ambient temperature higher than 5 °C?
● Door is opening by itself and / or the <b>Door</b> indicator light is lit.	Press door until it "clicks" into position.
● Degree of drying was not reached or drying time too long.	Clean fluff filter, <i>page 4</i> . Ambient temperature above 30 °C → adequate ventilation. Cooling grille may be blocked → unblock. Unsuitable programme set? <i>Page 7</i> . Dryer installation too restricted? Provide air circulation. Power failure → restart dryer. Fine layer of limescale on the moisture sensors → clean the moisture sensors, <i>page 6</i> .
● Washing damp.	Use next higher drying programme or also the Timed Programme, <i>page 7</i> . Warm washing feels damper than it actually is!
● Humidity in the room is increasing significantly.	Ventilate room adequately. Cooling grille blocked? → unblock.
● One or more indicator lights for programme status are flashing.	Clean fluff filter, <i>page 4</i> . Check installation conditions, <i>page 8</i> . Switch off, leave to cool down, switch on again, restart programme.
● Does the interior light work? (depending on model)	Pull out the mains plug. Open cover cap inside the appliance above the door (with a Torx 20 screwdriver) and change the bulb. Close the cover cap.
● Condensation in the exhaust air hose.	Exhaust air hose too long? → Check the maximum length of the exhaust air hose, for further information, see <i>Installation instructions for exhaust air duct</i> .

If you cannot correct a fault yourself or if a repair is required:

- Set programme selector to **Off**.
- Pull out the mains plug.

# Safety instructions



## Emergency

Use dryer ONLY...

NEVER...

## Hazards

## Installation

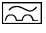
## Mains connection

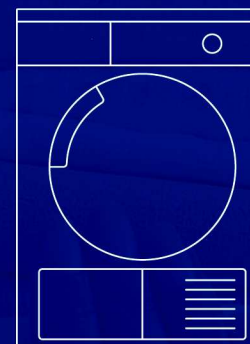
## Operation

## Defect

## Spare parts

## Disposal

- Immediately pull out mains plug or disconnect fuse.
- in the house.
- for drying textiles.
- use dryer for other purposes than those described above.
- modify the technology or properties of the dryer.
- Children and uninstructed persons must not use the dryer.
- Do not leave children unattended near the dryer.
- Keep pets away from the dryer.
- Take all objects out of the pockets. Look out for cigarette lighters → risk of explosion!
- Do not lean or sit on the door → risk of dryer tipping over!
- Open the door carefully. Hot steam may escape.
- Frost damage possible below 0 °C.
- Attach loose cables or hoses, otherwise risk of tripping.
- Observe the safety instructions in the separate installation instructions for the exhaust air duct!
- Connect the dryer correctly to an a.c. earthed socket, otherwise safety cannot be ensured.
- Cable cross-section must be adequate.
- Use residual-current-operated circuit breaker with this symbol only: 
- Mains plug and socket must match.
- Do not use multiple plugs/couplings and/or extension leads.
- Do not take hold of the mains plug with damp hands.
- Never pull the mains plug out of the socket by tugging the cable.
- Do not damage the power cord.
- Load the drum with *washing only*. Check the contents before switching on the dryer.
- Do not use the dryer if the washing has come into contact with solvent, oil, wax, grease or ink (e.g. setting lotion, nail varnish remover, stain remover, solvent naphtha, etc.) → risk of fire/explosion!
- Dust hazard (e.g. coal dust, flour): do not use the dryer → risk of explosion!
- Do not use the dryer if the washing contains foam/rubber → elastic material may be destroyed and the dryer may be damaged by possible deformation of the foam.
- Make sure the dryer is well ventilated while it is in operation.
- Switch off the dryer when the programme ends.
- Do not use the dryer if it is defective or considered to be defective; repairs by customer service only.
- Do not use the dryer if the power cord is defective. To prevent hazards, have a defective power cord replaced by customer service only.
- Before changing the interior light bulb, always pull the mains plug out of the socket.
- For reasons of safety use original spare parts and accessories only.
- Dryer: pull out the mains plug, then sever the power cord from the appliance. Dispose of it at a public waste disposal centre.
- Packaging: do not allow children to play with packaging parts → risk of suffocation!
- All materials are environmentally friendly and recyclable. Dispose of them in an environmentally friendly manner.



Dryer

en Operating and installation instructions



Read these instructions before switching on the dryer!  
Also observe the separate installation instructions for the exhaust air duct!



Follow instructions on page 11!